

GRANT COUNTY REGIONAL AIRPORT

Helicopter Parking Pads

Connect Oregon Presentation

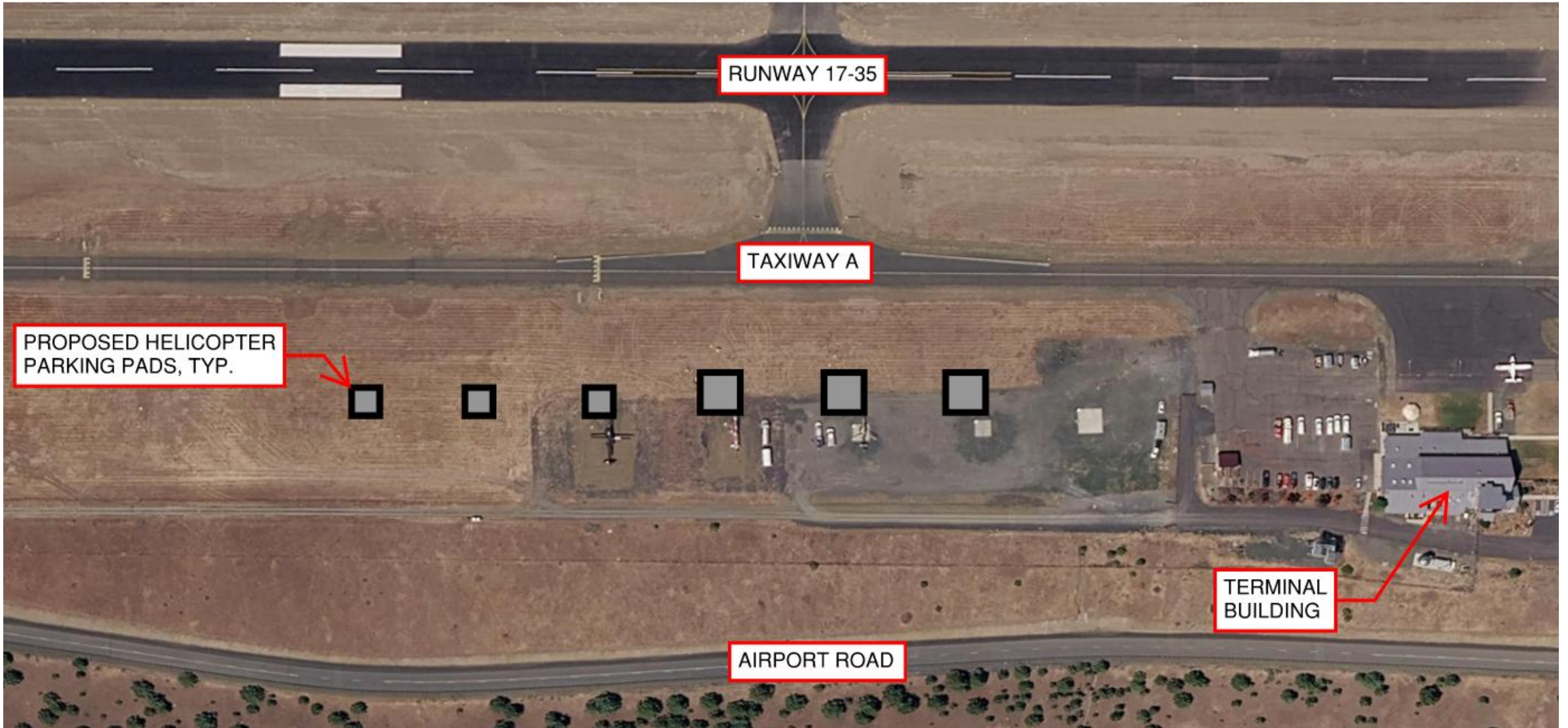
July 9, 2026



PROJECT NEED

- The Airport lacks sufficient helicopter landing facilities
- Intermixing of fixed and rotary wing aircraft should be avoided where possible
- The Airport has a dedicated Helicopter Operations and training base at the Airport
- The Airport plays an important role to the community for emergency and transportation alternatives
 - Dedicated helicopter facilities are essential for:
 - Emergency medical transportation
 - Wildfire aviation response
 - Law enforcement
- The project will improve aviation safety and operational efficiency at the Airport

PROPOSED LAYOUT



PROJECT FUNDING

