



Oregon

Tina Kotek, Governor

Department of Administrative Services
Enterprise Asset Management | Administration Office
1225 Ferry Street SE, U100
Salem, OR 97301-4290
PHONE: 503-378-4092
FAX: 503-373-7210

MEMORANDUM

To: Tracy Wilder, Facilities and Distribution Services Administrator, Oregon
Department of Corrections (DOC)

From: Bill Foster, Chair, Capital Planning Advisory Board (CPAB/Board)

Date: August 16, 2024

Subject: DOC's 2025-27 Agency Facilities Plan Acceptance

Tracy,

The Capital Projects Advisory Board (CPAB/Board) has reviewed DOC's 2025-27 facilities plan in accordance with ORS 276.227. Following your Board presentation on August 9th, the Board has **accepted** your plan with the following comments:

- *CPAB appreciates your thorough presentation and applauds the agency's 10-year master planning effort.*

Sincerely,

Bill Foster, Chair

Capital Projects Advisory Board (CPAB)



Oregon

Tina Kotek, Governor



Facilities Services
3601 State St.
Salem, OR 97301
FAX: (503) 378-6536
www.doc.oregon.gov

Bill Foster
Chair, Capital Projects Advisory Board

DOC's facility drivers are largely related to the age of existing structures. Historic growth has taxed infrastructure while DOC has received General Fund deferred maintenance and Capital Improvement budget for capitalized projects over the last two biennia. DOC's facilities operate year-round and around-the-clock, with a population that tests the resilience and serviceability of our buildings and systems. DOC's first priority is to reduce this deferred maintenance and capital renewal backlog.

The recent Facility Condition Assessment completed in 2015-16 identified \$420 million in project needs over the next ten years. In 2020 DOC hired DLR Group to develop a 10-year Strategic Master Plan that would identify a path to prioritizing, reducing, and eliminating the Capital Renewal and Deferred Maintenance backlog. DLR Group recognized that current funding efforts by the State to address deferred maintenance needs were insufficient and would not avert its rapid growth and that a significantly higher level of funding was needed to address and control deferred maintenance needs. They also reported that if left unresolved, the deferred maintenance needs will continue to grow and likely double every five years. DLR Group recommended targeting action items in the amount of \$480 million for near term funding. DOC does not have the workforce or capacity to accomplish this degree of work in one biennium so intends to request this funding be spread over several biennia. Further compounding the situation are the added stressors seen during the pandemic and its effects on the supply chain which continue to be felt, as well as vendor/contractor availability and interest to bid for projects. Needs that used to be addressed in 3 months are still seeing completion in 6-18 months, depending upon complexity.

DOC has been able to address many Priority 1 items that affect health and safety in the 23-25 biennium: EOCI Boiler Deaerators, EOCI Door Control Systems, TRCI Domestic water heaters, TRCI Reroof, SCI Boilers, radio towers & P25 radio system, CRCI Boiler Upgrades, SCI Exterior Waterproofing, and CCCF Kitchen Waste System Upgrades, to name a few. The agency needs Capital Improvement and Renewal funding reflective of the project needs identified in the recent Facility Condition Assessment to complete the recommended renovations and proactively manage any unforeseen failures due to the

July 29, 2024

Page 2

fragile condition of these critical systems. A full Facility Condition Assessment will be completed in 2025 which will properly identify and prioritize deferred maintenance needs. An additional assessment of all ODOC HVAC systems will be completed in 2024, and dedicated funding is sought to begin to address the repair and replacement of items which will be contained in that report. DOC does not have the workforce or capacity to accomplish this degree of work in one biennium so intends to request this funding be spread over the next several biennia. For 25-27, DOC is requesting a total of \$70 million in Capital Renewal needs to address the deferred maintenance and capital renewal backlog.



Oregon Department of Corrections

2025-27 Agency Facility Plan

Capital Projects Advisory Board

August 9, 2024

Agency Overview

THE OREGON WAY DESTINATION 2026

WHAT IS OUR DESTINATION?

PUBLIC SAFETY EMPLOYER OF CHOICE - INNOVATIVE EMPLOYEES TRANSFORMING LIVES



PRIDE
PEOPLE & SKILLS



STRENGTH
EMPLOYEE WELLNESS



RESPECT
CULTURE



PROTECT
CORRECTIONS
OUTCOMES



SERVE
RE-ENTRY &
SUPERVISION

DOC 10-year Strategic Plan

Oregon Department of Corrections 10-Year Strategic Plan Update Amendment

March 2023

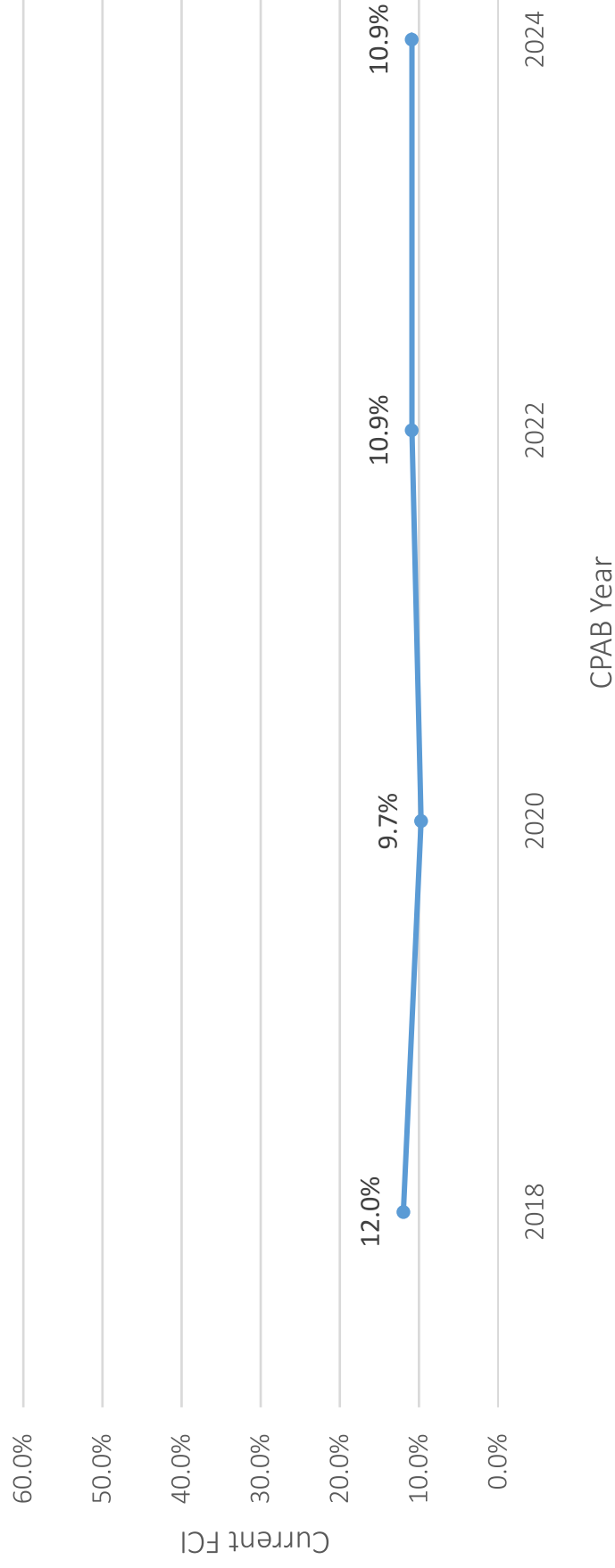
 DLR GROUP



photos by James King

Facility Condition

Portfolio Facility Condition Index (FCI)

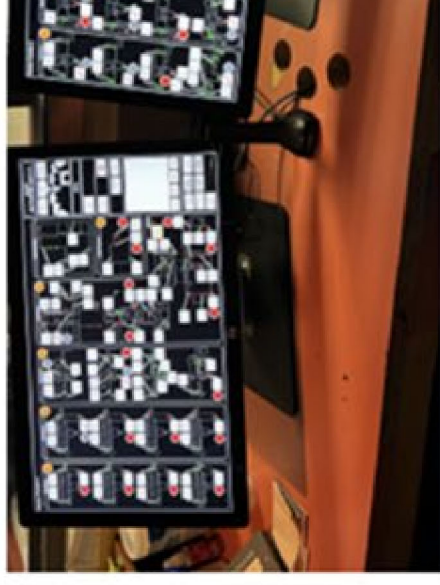


Last Biennium Major Projects

EOCI Boiler Deaerators



EOCI New door master

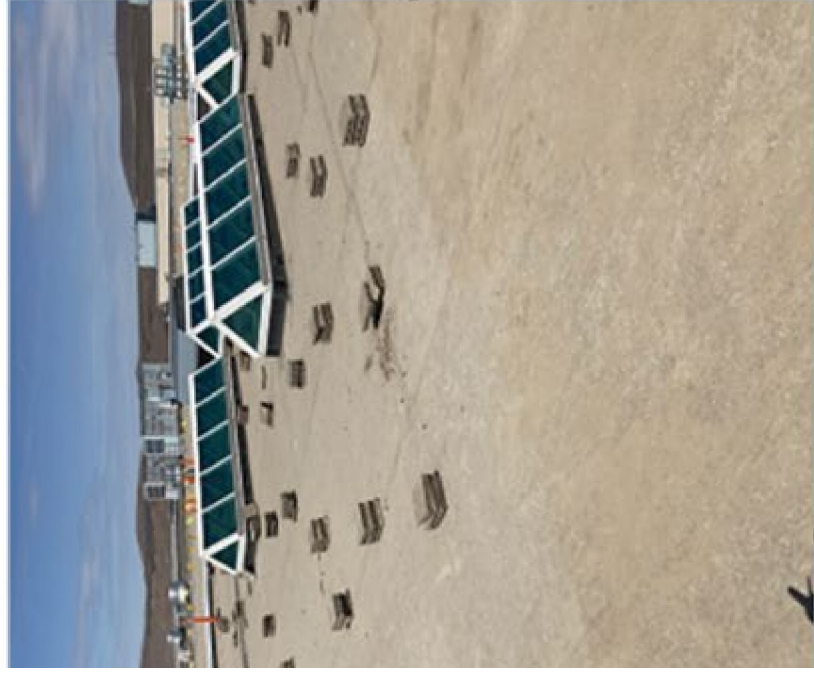


Last Biennium Major Projects

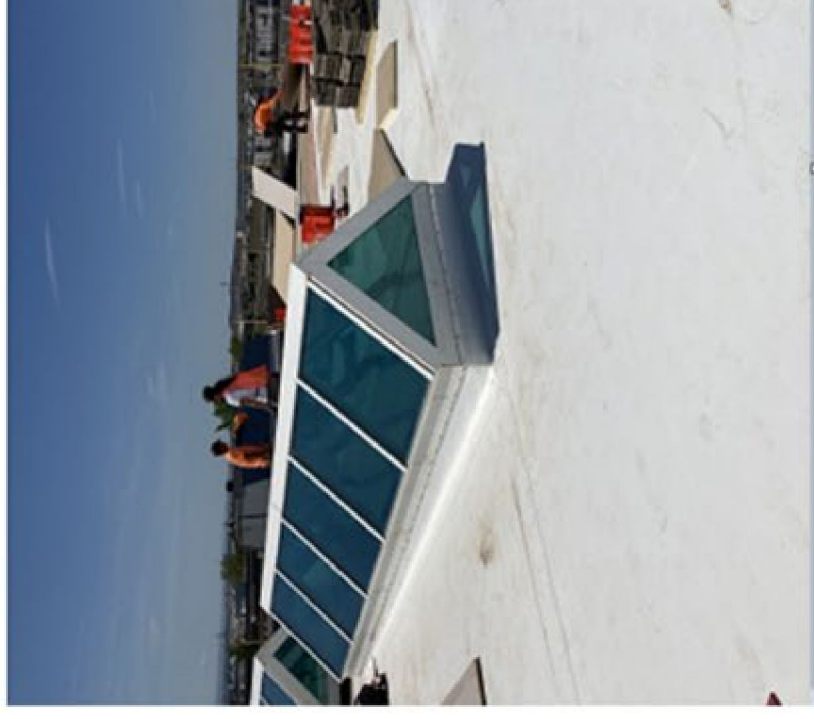
TRCI Domestic water heaters



Last Biennium Major Projects



TRCI Reroof



Last Biennium Major Projects

SCI Boilers

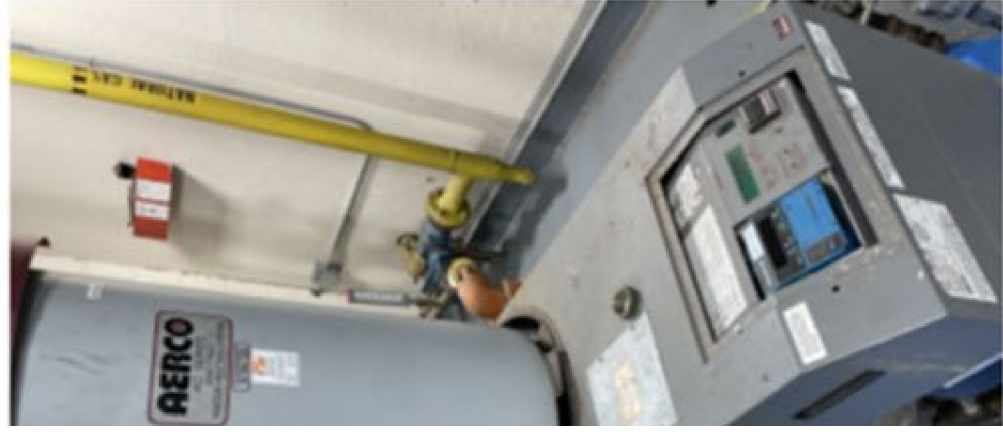


Last Biennium Major Projects

CDC radio tower & P25 radio system



Last Biennium Major Projects



CRCI Boiler Upgrades



Last Biennium Major Projects



SCI Exterior Waterproofing



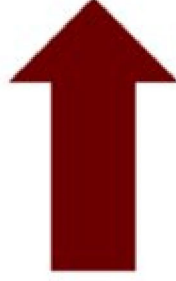
Facility Plan Summary

Capital Renewal Request, 25-27 Biennium

AGENCY PLAN SUMMARY	(PRIORITY 1)	(PRIORITY 2)	(PRIORITY 3)	SEISMIC/RISK (PRIORITY 4)	MODERNIZATION (NET PRIORITY 5)
Capital Renewal	\$19,635,021	\$24,903,232	\$25,461,748	\$0	\$0
Resilience/Risk	\$0	\$0	\$0	\$0	\$0
Modernization	\$0	\$0	\$0	\$0	\$0
Total	\$19,635,021	\$24,903,232	\$25,461,748	\$0	\$0

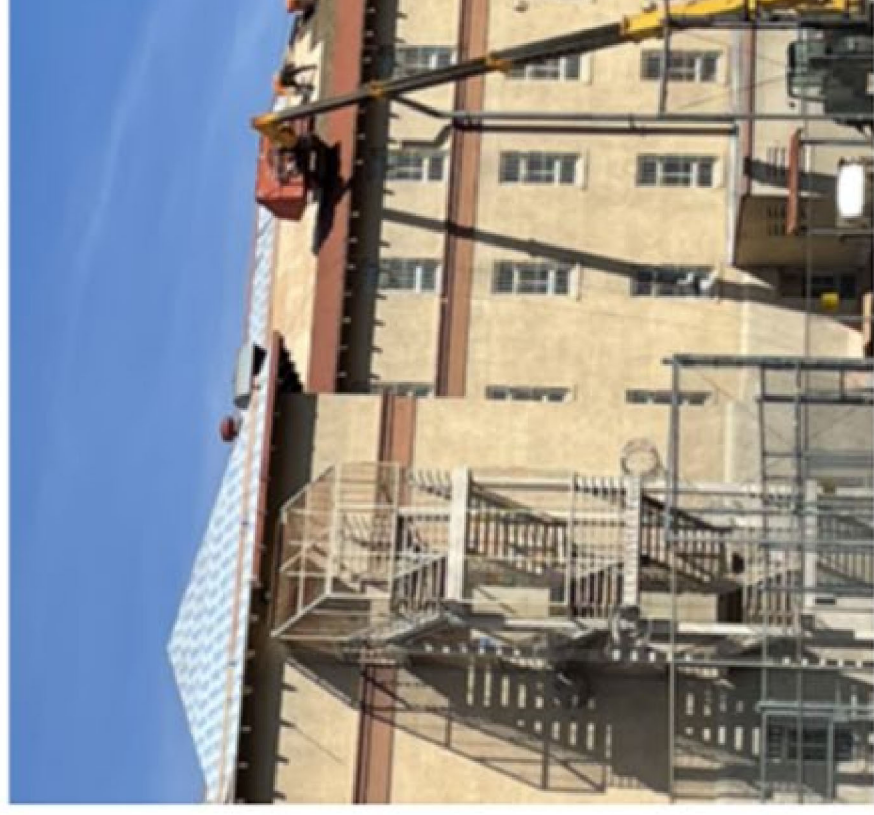
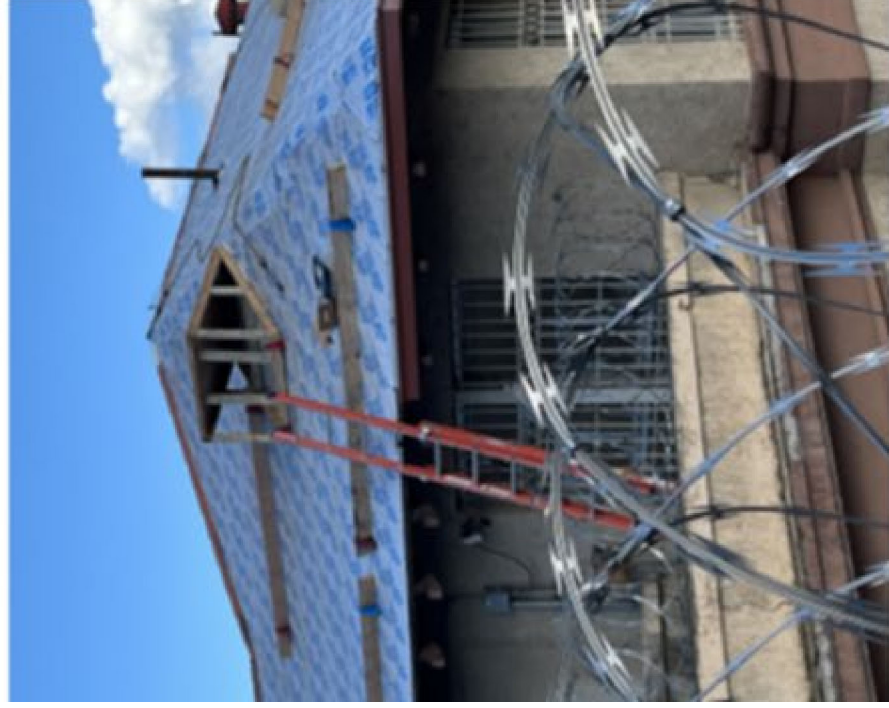
25-27 Major Projects

CCCF Kitchen Waste
System Upgrades
~\$340,000 budgeted



25-27 Major Projects

EOCI Reroof
~\$2,720,000 budgeted



25-27 Major Projects

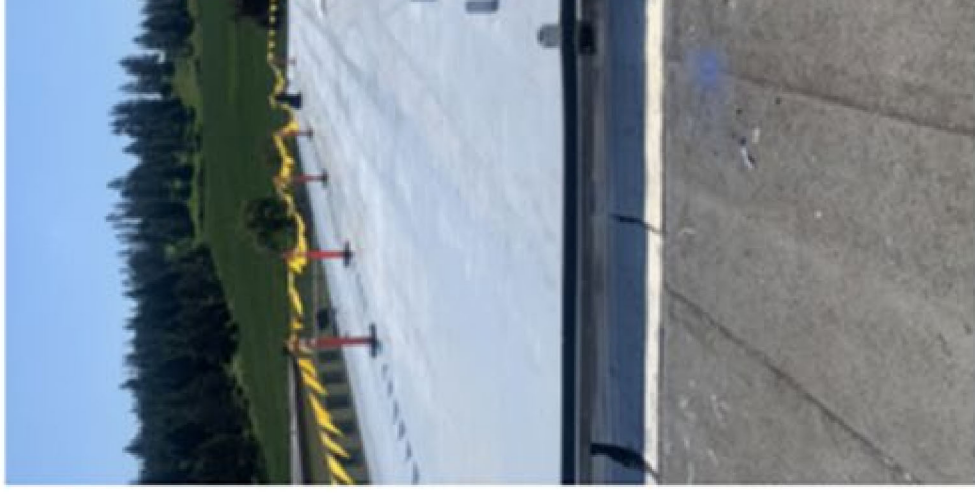
EOCI Steam Tunnel Replacement Project, before



25-27 Major Projects

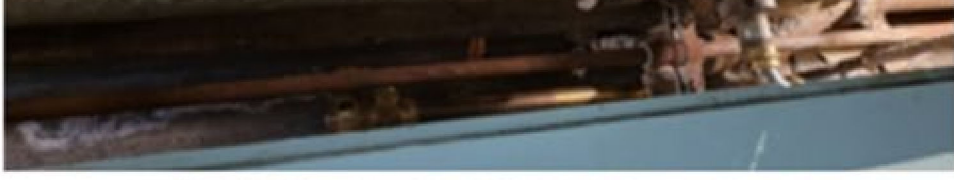
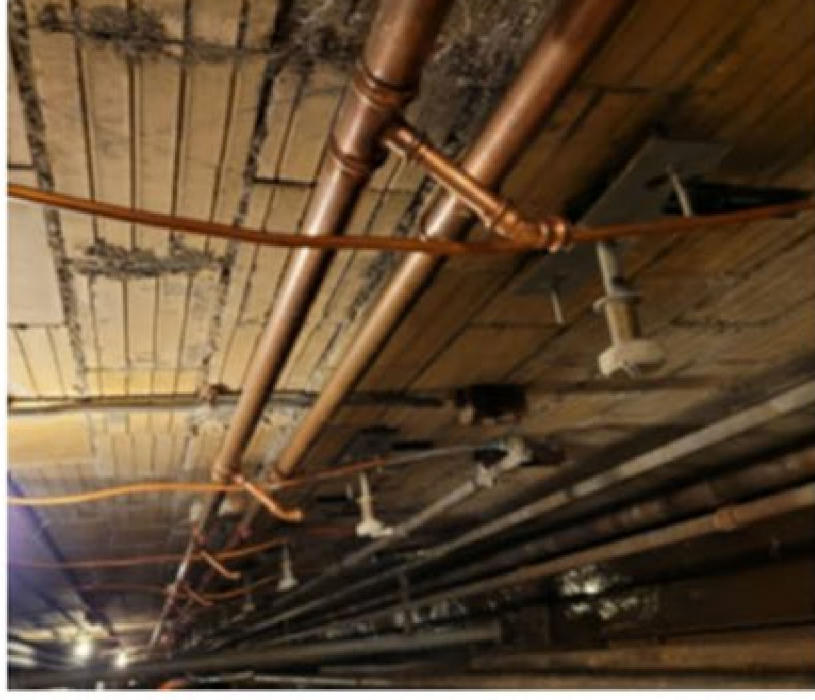


OSCI Reroof
~\$2,700,000 budgeted



25-27 Major Projects

OSP A Block Repipe, ~\$2,000,000 budgeted



25-27 Major Projects



OSP Boiler Upgrades, ~\$1,500,000 budgeted



Facility Plan - Maintenance Priority 1-4
2025-27 Biennium

Agency Name Oregon Department of Corrections

Current Maintenance Priority 1-4 for Owned Assets Over \$1M CRV'

Campus	Building ID Building Name			iPlan Data (incl Soft Costs)										Agency Input	
	A	B	C	D	E	F	G	H	I	J	K	L	M	N	
				Construction Year	Gross Square Footage	Current (Calculated) Value	Priority 1 - Currently Critical (Life Safety, DM, Compliance)	Priority 2 - Critical (Near Term Capital Expenditure, Priority, Functionality)	Priority 3 - Not Yet Critical (Mid-Term)	Priority 4 - Not Yet Critical (Semi-Annual + Natural Hazard Remediation (if appropriate))	Total (CRV+H)	Current FCI/Asset Column (Current Year)	2023-25 LAB Approved	Priority 1 - Currently Critical (Estimated)	
ODOC - Central Distribution Center	976	Canteen Warehouse		1989	22,000	\$7,762,824			\$5,364	\$1,651,777	\$1,657,141	21.3%	\$1,657,141		
ODOC - Central Distribution Center	977	Central Distribution Center		1969	279,200	\$96,593,022		\$2,407,191	\$6,851,852	\$13,550,038	\$22,809,287	23.1%	\$22,809,287		
ODOC - Central Distribution Center	978	OCE Showroom/Offices		1969	31,500	\$2,907,028			\$30,416	\$202,876	\$283,292	9.7%	\$283,292		
ODOC - Central Distribution Center	979	Truck Service Building		1969	11,164	\$3,939,280			\$31,745	\$66,617	\$98,362	2.5%	\$98,362		
ODOC - Coffee Creek Correctional Facility	1225	Administration and Food Services		2001	13,872	\$11,805,002			\$25,882	\$1,434,468	\$1,460,350	12.4%	\$1,460,350		
ODOC - Coffee Creek Correctional Facility	1236	Central Plant		2001	4,400	\$4,040,423			\$112,527	\$979,963	\$1,092,490	27.0%	\$1,092,490		
ODOC - Coffee Creek Correctional Facility	1234	Gatehouse (Admin, Visiting, Intake, Control)		2002	32,780	\$28,026,550	\$368,178		\$0	\$4,227,887	\$4,596,064	16.4%	\$4,596,064		
ODOC - Coffee Creek Correctional Facility	1232	Medium Housing Unit O/D		2007	26,270	\$36,450,419			\$0	\$547,812	\$547,812	1.5%	\$547,812		
ODOC - Coffee Creek Correctional Facility	1224	Medium Security Correctional Facility		2002	271,500	\$276,975,582	\$1,929,451		\$670,198	\$27,160,066	\$29,759,715	10.7%	\$29,759,715		
ODOC - Coffee Creek Correctional Facility	1235	Medium Security Fence		1	1	\$3,415,954			\$0	\$0	\$0	0.0%	\$0		
ODOC - Coffee Creek Correctional Facility	1227	Minimum Housing		2001	50,008	\$19,213,786	\$942,100		\$6,726	\$969,623	\$1,918,448	10.0%	\$1,918,448		
ODOC - Coffee Creek Correctional Facility	1241	Minimum Workforce		2001	5,760	\$3,543,214			\$24,215	\$546,647	\$570,862	16.1%	\$570,862		
ODOC - Coffee Creek Correctional Facility	1242	OCS Records Facility		2001	9,906	\$6,029,916			\$0	\$110,223	\$944,458	9.7%	\$944,458		
ODOC - Coffee Creek Correctional Facility	1244	Physical Plant and Office		2001	13,560	\$11,450,711	\$4,897		\$150,079	\$392,364	\$756,140	6.6%	\$756,140		
ODOC - Coffee Creek Correctional Facility	1218	Program Services		2001	8,248	\$8,019,370			\$274,656	\$1,055,794	\$1,330,439	16.6%	\$1,330,439		
ODOC - Coffee Creek Correctional Facility	1228	Special Housing		2001	16,032	\$9,696,870			\$15,670	\$1,140,621	\$1,156,292	11.9%	\$1,156,292		
ODOC - Coffee Creek Correctional Facility	1219	Training Building		2001	5,000	\$1,694,800			\$4,207	\$85,727	\$89,934	32.5%	\$89,934		
ODOC - Columbia River Correctional Institution	1347	CRCI Main Facility		1990	119,883	\$94,442,991	\$2,293,290		\$3,082,387	\$2,143,070	\$7,518,746	8.0%	\$7,518,746		
ODOC - Deer Ridge Correctional Institution	4701	Dorm Housing Unit H06		2007	24,532	\$19,453,913			\$132,360	\$158,909	\$291,269	1.5%	\$291,269		
ODOC - Deer Ridge Correctional Institution	4692	Electrical Substations 1, 2, 3 and 4		2007	6,720	\$2,009,374			\$0	\$0	\$0	0.0%	\$0		
ODOC - Deer Ridge Correctional Institution	4672	Food Services and Canteen/Mechanical		2007	37,757	\$28,536,369	\$407,520		\$3	\$5,192,137	\$5,599,659	19.6%	\$5,599,659		
ODOC - Deer Ridge Correctional Institution	4703	Gate House		2007	33,049	\$21,753,800	\$1,828,611		\$23	\$1,083,758	\$2,912,269	13.4%	\$2,912,269		
ODOC - Deer Ridge Correctional Institution	4678	High Custody Housing H03		2007	28,020	\$22,845,366			\$0	\$2,170	\$2,896,185	12.7%	\$2,896,185		
ODOC - Deer Ridge Correctional Institution	4696	Housing Unit H07		2007	50,530	\$20,321,351			\$6,510	\$2,078,157	\$2,084,667	10.2%	\$2,084,667		
ODOC - Deer Ridge Correctional Institution	4690	Housing Unit H08		2007	50,530	\$21,299,698			\$0	\$1,642,656	\$3,944,465	6.6%	\$3,944,465		
ODOC - Deer Ridge Correctional Institution	4695	Inmate Housing Unit and Dorm Housing Unit H05		2007	29,220	\$22,304,110	\$315,378		\$1,085	\$323,324	\$639,786	2.9%	\$639,786		
ODOC - Deer Ridge Correctional Institution	4675	Inmate Housing Unit H01		2007	33,840	\$26,552,012			\$0	\$362,055	\$363,140	1.3%	\$363,140		
ODOC - Deer Ridge Correctional Institution	4689	Inmate Housing Unit H02		2007	33,840	\$29,058,855	\$365,243		\$1,051	\$333,331	\$719,625	2.5%	\$719,625		
ODOC - Deer Ridge Correctional Institution	4682	Inmate Housing Unit H04		2007	33,840	\$29,030,696	\$365,243		\$13,366	\$371,345	\$749,955	2.6%	\$749,955		
ODOC - Deer Ridge Correctional Institution	4683	Inmate Housing Unit H05		2007	7,183	\$5,524,811	\$77,528		\$0	\$151,666	\$229,194	11.8%	\$229,194		
ODOC - Deer Ridge Correctional Institution	4695	Medical Programs/Operations		2007	37,301	\$1,293,893			\$33,816	\$3,049,600	\$3,083,416	25.1%	\$3,083,416		
ODOC - Deer Ridge Correctional Institution	4694	Minimum Health Services		2007	9,172	\$8,305,040			\$0	\$200,202	\$200,202	2.4%	\$200,202		
ODOC - Deer Ridge Correctional Institution	4691	Multi-Purpose Building		2007	9,840	\$3,985,435	\$5,268		\$2,428	\$80,815	\$88,511	2.2%	\$88,511		
ODOC - Deer Ridge Correctional Institution	4678	OCE Workforce/Physical Plant		2007	28,500	\$26,548,625	\$167,382		\$0	\$51,624	\$719,005	2.7%	\$719,005		
ODOC - Deer Ridge Correctional Institution	4698	Operations Building		2007	24,958	\$16,006,837			\$33,507	\$1,297,749	\$1,311,257	8.2%	\$1,311,257		
ODOC - Deer Ridge Correctional Institution	4696	Program Services Building		2007	16,530	\$6,702,170			\$0	\$766,748	\$1,151,736	17.1%	\$1,151,736		
ODOC - Deer Ridge Correctional Institution	4684	Site Work and Hardscaping (Inside the Fence)		2007	0	\$16,455,222			\$0	\$61,971	\$446,582	2.7%	\$446,582		
ODOC - Deer Ridge Correctional Institution	4685	Site Work and Hardscaping (Outside the Fence)		2007	0	\$11,888,178			\$0	\$966,309	\$966,309	8.1%	\$966,309		
ODOC - Deer Ridge Correctional Institution	4677	Warehouse		2007	33,000	\$10,665,949	\$299,308		\$0	\$665,401	\$964,709	9.0%	\$964,709		
ODOC - Deer Ridge Correctional Institution	4680	Workforce Building		2007	11,920	\$5,596,619			\$10,849	\$219,294	\$230,144	4.1%	\$230,144		
ODOC - Eastern Oregon Correctional Institution	3271	B-Building		1930	34,000	\$27,068,669	\$36		\$362,236	\$3,973,608	\$4,335,867	3.9%	\$4,335,867		
ODOC - Eastern Oregon Correctional Institution	3014	B-Building		1924	41,780	\$32,913,984			\$198,458	\$1,068,701	\$1,267,160	3.9%	\$1,267,160		
ODOC - Eastern Oregon Correctional Institution	3028	Carpentry Shop		1951	11,128	\$3,771,945	\$237,017		\$0	\$524,100	\$761,117	20.2%	\$761,117		
ODOC - Eastern Oregon Correctional Institution	3022	C-Building		1918	37,432	\$29,488,667	\$5,152		\$57,911	\$1,146,279	\$1,209,342	4.1%	\$1,209,342		
ODOC - Eastern Oregon Correctional Institution	3044	D-1 to D-4 South		1911	51,856	\$44,129,193	\$195,779		\$2,322,911	\$686,743	\$3,205,433	7.3%	\$3,205,433		
ODOC - Eastern Oregon Correctional Institution	3019	D-1 to D-5 North		1911	26,500	\$16,028,387			\$698,516	\$985,929	\$1,684,445	10.5%	\$1,684,445		
ODOC - Eastern Oregon Correctional Institution	3017	Emergency Generator Buildings		1918	37,598	\$29,611,668	\$392,024		\$108,014	\$733,154	\$1,243,172	4.1%	\$1,243,172		
ODOC - Eastern Oregon Correctional Institution	3042	Emergency Generator Buildings		1984	1,517	\$1,873,083			\$0	\$36,372	\$36,372	1.9%	\$36,372		
ODOC - Eastern Oregon Correctional Institution	3030	F-Building		1924	44,924	\$35,390,813			\$0	\$1,568,082	\$1,568,082	4.4%	\$1,568,082		
ODOC - Eastern Oregon Correctional Institution	3025	Garment Factory		1989	46,400	\$17,040,811			\$3,749	\$1,228,833	\$1,232,582	7.2%	\$1,232,582		
ODOC - Eastern Oregon Correctional Institution	3035	G-Building		1930	34,144	\$26,898,405			\$1,099,443	\$1,941,596	\$2,041,039	7.6%	\$2,041,039		
ODOC - Eastern Oregon Correctional Institution	3040	H and J 2 Building and Segregation 1 and 2		1945	70,394	\$39,512,248			\$5,160,129	\$2,807,265	\$6,947,567	20.7%	\$6,947,567		
ODOC - Eastern Oregon Correctional Institution	3045	Heartbeat/Monitoring Station (Yard Towers) Security Fence		1999	4,500	\$5,887,626			\$0	\$10,445	\$151,986	1.5%	\$151,986		
ODOC - Eastern Oregon Correctional Institution	3018	H-Program Building (Workforce Development)		1999	4,500	\$1,525,320			\$0	\$158,874	\$158,874	10.4%	\$158,874		
ODOC - Eastern Oregon Correctional Institution	3026	HVAC, Maint 1-2 Building		1953	3,520	\$1,825,231	\$1,676,080		\$0	\$272,691	\$1,948,771	106.8%	\$1,948,771		
ODOC - Eastern Oregon Correctional Institution	3039	Inmate Dining Rooms		1987	10,675	\$5,014,095	\$306,039		\$0	\$86,285	\$892,324	17.8%	\$892,324		
ODOC - Eastern Oregon Correctional Institution	3033	Laundry Building		1928	12,774	\$4,888,054			\$0	\$252,652	\$252,652	5.5%	\$252,652		
ODOC - Eastern Oregon Correctional Institution	3027	Multi-Purpose Building		1988	12,988	\$4,405,800	\$121,774		\$0	\$201,416	\$423,190	9.5%	\$423,190		
ODOC - Eastern Oregon Correctional Institution	3038	Physical Plant		1956	15,292	\$12,913,296			\$0	\$1,379,589	\$1,379,589	10.7%	\$1,379,589		
ODOC - Eastern Oregon Correctional Institution	3034	Powerhouse Building		1911	7,615	\$5,682,305	\$4,222,519		\$0	\$10,078,231	\$14,300,750	251.7%	\$14,300,750		
ODOC - Eastern Oregon Correctional Institution	3024	Roof Cellar, Landscape Building and Red Storage		1952	11,260	\$2,637,800			\$55,246	\$117,411	\$172,657	6.5%	\$172,657		
ODOC - Eastern Oregon Correctional Institution	3023	Site Work and Hardscaping (Inside the Fence)		1984	0	\$7,151,778			\$335,101	\$135,273	\$470,374	6.6%	\$470,374		
ODOC - Eastern Oregon Correctional Institution	3021	Site Work and Hardscaping (Outside the Fence)		1984	0	\$4,639,614			\$0	\$640,213	\$640,213	13.8%	\$640,213		
ODOC - Eastern Oregon Correctional Institution	3046	Yard Towers, Medium Security Fence and Security		1984	0	\$4,898,374			\$0	\$0	\$0	0.0%	\$0		
ODOC - Oregon State Correctional Institution	3326	Administration		1959	13,575	\$8,726,565	\$135,081		\$324,322	\$713,490	\$1,172,893	13.4%	\$1,172,893		
ODOC - Oregon State Correctional Institution	3305	Chapel, Barbershop, Visiting Room		1959	10,803	\$7,706,722			\$40,916	\$387,556	\$428,473	5.6%	\$428,473		
ODOC - Oregon State Correctional Institution	3318	Education Library		1959	8,083	\$5,184,455			\$0	\$148,253	\$169,661	6.1%	\$169,661		
ODOC - Oregon State Correctional Institution	3314	Food Service, Pharmacy and Hobby Shop		1959	27,152	\$24,704,951			\$204,477	\$1,751,773	\$1,956,250	7.9%	\$1,956,250		
ODOC - Oregon State Correctional Institution	3340	Heating Plant		1958	6,726	\$20,849,297	\$4,324		\$0	\$66,563	\$715,126	3.4%	\$715,126		
ODOC - Oregon State Correctional Institution	3307	Housing Unit 5, Security Manager, Hearings Office		1966	13,575	\$6,730,903	\$1,005,103		\$769,101	\$54,911	\$1,828,515	27.2%	\$1,828,515		
ODOC - Oregon State Correctional Institution	3321	Housing Units 1, 2, 3 and 4		1959	52,392	\$41,274,051	\$6,143,259		\$1,125,766	\$1,237,916	\$6,506,941	20.6%	\$6,506,941		
ODOC - Oregon State Correctional Institution	3325	Housing Units 11 and 13		1965	22,284	\$17,555,180	\$2,111,745		\$659,465	\$439,514	\$3,070,724	17.5%	\$3,070,724		
ODOC - Oregon State Correctional Institution	3310	Infirm and Dental Office		1959	4,700	\$3,135,669	\$27,425		\$122,746	\$171,960	\$322,131	10.3%	\$322,131		
ODOC - Oregon State Correctional Institution	3315	Multi-Purpose		1975	16,300	\$4,120,240			\$0	\$918,272	\$918,272	12.6%	\$918,272		
ODOC - Oregon State Correctional Institution	3302	OCE Work Area		1962	38,821	\$13,812,074	\$654,048		\$793,921	\$794,229	\$2,442,178	12.4%	\$2,442		

ODOC - Powder River Correctional Facility	5017	Sitework, Hardscaping, Minimum Fence, Basketballs	1991	0	\$3,550,889	\$45,567	\$0	\$304,765	\$350,332	9.9%	\$350,332		
ODOC - Powder River Correctional Facility	5009	Unit 1, Labor Building	1990	14,886	\$6,033,222	\$397,007	\$20,673	\$303,012	\$721,593	12.0%	\$721,593		
ODOC - Powder River Correctional Facility	5014	Unit 2, Dorm Housing	2003	12,920	\$5,232,897	\$0	\$7,402	\$124,683	\$132,084	2.5%	\$132,084		
ODOC - Powder River Correctional Facility	5013	Unit 3, General Use Building	1990	14,886	\$6,033,222	\$130,216	\$13,476	\$202,414	\$346,694	5.8%	\$346,694		
ODOC - Santiam Correctional Institution	4740	Main Facility	1945	71,982	\$42,919,921	\$696,754	\$822,340	\$1,202,857	\$2,721,751	6.3%	\$2,721,751		
ODOC - Santiam Correctional Institution	4738	Maintenance Building	1980	9,000	\$4,666,784	\$31,876	\$38,448	\$277,628	\$347,952	7.5%	\$347,952		
ODOC - Santiam Correctional Institution	4739	Multi-Purpose Building	1929	7,200	\$2,440,810	\$67,989	\$722,111	\$296,125	\$1,086,225	44.5%	\$1,086,225		
ODOC - Santiam Correctional Institution	4746	Physical Plant Boiler System	1946	3,006	\$2,760,344	\$3,671	\$174,782	\$163,611	\$342,064	12.4%	\$342,064		
ODOC - Santiam Correctional Institution	4745	Site Systems - Landscaping - Hardscaping and Minimum Security Fencing	1991	6,620	\$5,144,957	\$0	\$1,853,775	\$27,078	\$1,880,853	30.6%	\$1,880,853		
ODOC - SFFC	5916	Administration	2003	2,820	\$2,833,915	\$0	\$279,708	\$160,175	\$439,883	16.7%	\$439,883		
ODOC - SFFC	5935	Dining Facility	2003	4,480	\$1,483,505	\$2,170	\$3,402	\$307,222	\$312,794	21.1%	\$312,794		
ODOC - SFFC	5943	New Dormitory	2003	4,350	\$1,411,422	\$0	\$0	\$467,499	\$467,499	33.1%	\$467,499		
ODOC - SFFC	5927	Vehicle Barn & Boot Repair	2003	5,450	\$1,923,064	\$0	\$46,190	\$0	\$46,190	2.4%	\$46,190		
ODOC - SFFC	5938	Wood Shed	1980	1,680	\$2,169,842	\$0	\$0	\$9,774	\$9,774	0.5%	\$9,774		
ODOC - Snake River Correctional Institution	3987	Administration	1992	21,000	\$9,841,138	\$0	\$1,467,422	\$948,182	\$2,415,605	24.5%	\$2,415,605		
ODOC - Snake River Correctional Institution	3963	Armon	1992	2,900	\$1,968,804	\$0	\$173,260	\$166,990	\$340,250	17.3%	\$340,250		
ODOC - Snake River Correctional Institution	3979	Central Medical/Hearings	1991	31,164	\$21,547,992	\$0	\$60,053	\$2,344,825	\$2,404,878	11.2%	\$2,404,878		
ODOC - Snake River Correctional Institution	3963	Central Plant	2001	10,967	\$7,289,802	\$124,695	\$171,100	\$4,543,981	\$5,385,776	73.9%	\$5,385,776		
ODOC - Snake River Correctional Institution	3989	Complex 1 - Housing Unit A	1992	32,000	\$21,681,292	\$356,846	\$31,224	\$981,210	\$1,369,280	6.3%	\$1,369,280		
ODOC - Snake River Correctional Institution	3984	Complex 1 - Housing Unit B	1992	32,000	\$21,681,292	\$0	\$38,027	\$490,436	\$528,463	2.4%	\$528,463		
ODOC - Snake River Correctional Institution	3981	Complex 1 - Housing Unit C	1992	32,000	\$21,733,154	\$0	\$38,027	\$919,267	\$957,294	3.0%	\$957,294		
ODOC - Snake River Correctional Institution	3990	Complex 1 General Services	1992	28,000	\$17,373,990	\$312,369	\$625,634	\$1,163,938	\$2,043,943	12.1%	\$2,043,943		
ODOC - Snake River Correctional Institution	3986	Complex 1 Industries	1992	51,200	\$16,815,547	\$0	\$909,220	\$1,637,736	\$2,546,956	15.1%	\$2,546,956		
ODOC - Snake River Correctional Institution	3975	Complex 2 - Housing Unit I and J	2001	26,811	\$42,889,140	\$0	\$0	\$1,380,848	\$1,380,848	3.2%	\$1,380,848		
ODOC - Snake River Correctional Institution	3962	Complex 2 - Housing/Gym	2001	124,060	\$84,344,424	\$0	\$1,173,266	\$2,553,438	\$3,726,704	4.4%	\$3,726,704		
ODOC - Snake River Correctional Institution	3992	Complex 3 - Housing I and J	1996	26,811	\$42,889,140	\$0	\$0	\$1,635,727	\$1,635,727	3.9%	\$1,635,727		
ODOC - Snake River Correctional Institution	3993	Complex 3 - Housing/Gym	1996	124,060	\$84,344,424	\$0	\$33,124	\$2,824,614	\$3,187,758	3.8%	\$3,187,758		
ODOC - Snake River Correctional Institution	3970	DSU/UMU	2001	146,010	\$101,108,043	\$0	\$1,134,605	\$2,214,284	\$3,348,889	3.3%	\$3,348,889		
ODOC - Snake River Correctional Institution	3977	Food Services	1992	37,000	\$22,149,072	\$0	\$7,166,038	\$754,999	\$7,921,037	35.8%	\$7,921,037		
ODOC - Snake River Correctional Institution	3972	General Services Complex 2	1996	51,135	\$35,356,057	\$0	\$247,293	\$1,583,338	\$1,830,631	5.2%	\$1,830,631		
ODOC - Snake River Correctional Institution	3964	General Services Complex 3	2001	51,135	\$35,356,057	\$9,332,161	\$143,128	\$2,191,881	\$11,667,170	33.0%	\$11,667,170		
ODOC - Snake River Correctional Institution	3995	Housing Cluster D and E	1992	26,954	\$23,033,011	\$0	\$160,134	\$278,963	\$439,098	1.9%	\$439,098		
ODOC - Snake River Correctional Institution	3991	Industries Complex 2	1996	28,548	\$19,827,249	\$0	\$191,021	\$939,973	\$1,130,994	5.7%	\$1,130,994		
ODOC - Snake River Correctional Institution	3974	Industries Complex 3	1996	28,548	\$19,827,249	\$0	\$146,423	\$843,789	\$990,212	5.0%	\$990,212		
ODOC - Snake River Correctional Institution	3978	Main Tower, Sitework and Hardscaping (Inside the	1992	2,000	\$21,373,517	\$0	\$55,663	\$241,513	\$297,176	1.4%	\$297,176		
ODOC - Snake River Correctional Institution	3973	Minimum Security Dormitory	1992	47,685	\$28,185,990	\$109,447	\$44,766	\$2,141,893	\$2,296,107	8.1%	\$2,296,107		
ODOC - Snake River Correctional Institution	3965	Pump Stations 1 and 2 and Water Tanks	1992	1,680	\$1,376,706	\$0	\$0	\$35,698	\$35,698	2.6%	\$35,698		
ODOC - Snake River Correctional Institution	3971	Sitework and Hardscaping (Outside the Fence)	1992	0	\$14,295,026	\$0	\$67,048	\$7,289	\$74,337	0.5%	\$74,337		
ODOC - Snake River Correctional Institution	3966	Visitors Center	2001	29,453	\$20,881,635	\$398,226	\$496,080	\$1,316,265	\$2,210,571	10.6%	\$2,210,571		
ODOC - Snake River Correctional Institution	3994	Warehouse Building	1992	52,000	\$15,996,562	\$35,354	\$11,867	\$814,350	\$861,574	5.4%	\$861,574		
ODOC - Two Rivers Correctional Institution	3220	Administration	1998	26,012	\$16,684,158	\$181,631	\$462,866	\$272,652	\$917,149	5.5%	\$917,149		
ODOC - Two Rivers Correctional Institution	3210	Core Operations Building	2000	13,840	\$8,877,006	\$168,555	\$488,597	\$155,428	\$792,580	8.9%	\$792,580		
ODOC - Two Rivers Correctional Institution	3223	Detention and Sully Port	2000	6,160	\$5,437,733	\$0	\$137,977	\$192,441	\$330,418	6.0%	\$330,418		
ODOC - Two Rivers Correctional Institution	3203	General Housing Units 1 to 6	1999	150,540	\$118,588,216	\$43,189	\$1,087,355	\$5,241,946	\$6,372,490	5.4%	\$6,372,490		
ODOC - Two Rivers Correctional Institution	3209	General Housing Units 7 to 8	1999	50,180	\$39,629,404	\$93,550	\$277,028	\$462,952	\$833,531	2.1%	\$833,531		
ODOC - Two Rivers Correctional Institution	3214	General Housing Units 9 to 14	1999	150,540	\$118,588,216	\$43,206	\$942,954	\$5,035,680	\$6,021,841	5.1%	\$6,021,841		
ODOC - Two Rivers Correctional Institution	3217	High Custody Unit	1999	46,510	\$36,638,355	\$0	\$258,418	\$489,448	\$747,866	2.0%	\$747,866		
ODOC - Two Rivers Correctional Institution	3218	Inmate Processing Building	1999	13,000	\$10,017,093	\$372,675	\$210,961	\$67,207	\$850,743	6.5%	\$850,743		
ODOC - Two Rivers Correctional Institution	3205	laundry Transfer Building	1999	3,289	\$2,446,287	\$0	\$0	\$35,898	\$35,898	1.5%	\$35,898		
ODOC - Two Rivers Correctional Institution	3224	Medical Services	2000	21,000	\$18,307,910	\$4,767	\$94,635	\$671,763	\$771,165	4.2%	\$771,165		
ODOC - Two Rivers Correctional Institution	3222	Medium Security Fence and Security Gates	2000	158,809	\$9,708,062	\$3,225,062	\$6,645	\$3,645	\$3,237,372	33.3%	\$3,237,372		
ODOC - Two Rivers Correctional Institution	3202	Minimum Housing Unit	1999	17,965	\$15,170,605	\$114,520	\$22,825	\$886,194	\$1,112,939	8.7%	\$1,112,939		
ODOC - Two Rivers Correctional Institution	3211	OCPE Warehouse	1999	10,400	\$2,436,336	\$0	\$0	\$142,237	\$142,237	5.8%	\$142,237		
ODOC - Two Rivers Correctional Institution	3206	Regional Plant Building and Warehouse	2000	36,458	\$23,677,339	\$93,989	\$241,723	\$792,512	\$1,094,734	4.6%	\$1,094,734		
ODOC - Two Rivers Correctional Institution	3208	Regional Transport	2000	7,800	\$2,328,858	\$0	\$72,384	\$89,242	\$171,626	7.3%	\$171,626		
ODOC - Two Rivers Correctional Institution	3225	Religious Services	2000	5,750	\$5,366,655	\$14,098	\$30,473	\$106,021	\$150,592	2.8%	\$150,592		
ODOC - Two Rivers Correctional Institution	3204	Sitework and Hardscaping (Inside the Fence)	2000	0	\$2,885,912	\$0	\$0	\$922,218	\$922,218	32.0%	\$922,218		
ODOC - Two Rivers Correctional Institution	3216	Sitework and Hardscaping (Outside the Fence)	2000	0	\$10,904,899	\$0	\$0	\$1,338,793	\$1,338,793	12.3%	\$1,338,793		
ODOC - Two Rivers Correctional Institution	3221	Substations, Solar Arrays and Propane Storage	2000	24,274	\$3,734,884	\$7,694	\$15,993	\$15,189	\$38,667	1.0%	\$38,667		
ODOC - Two Rivers Correctional Institution	3213	TCCU Food Service Building	2000	23,240	\$19,807,411	\$0	\$59,749	\$106,054	\$997,423	5.0%	\$997,423		
ODOC - Two Rivers Correctional Institution	3215	Warehouse	1999	16,000	\$5,171,369	\$0	\$205,844	\$168,140	\$373,984	7.2%	\$373,984		
ODOC - Two Rivers Correctional Institution	3212	Workforce Building	2000	92,220	\$43,298,680	\$1,595,513	\$587,669	\$3,125,890	\$5,309,072	12.3%	\$5,309,072		
ODOC - Warner Creek Correctional Facility	1058	35-Bldg A - Administration	2005	8,200	\$3,266,686	\$3,802	\$91,656	\$697,280	\$697,280	21.2%	\$697,280		
ODOC - Warner Creek Correctional Facility	1059	35-Bldg B - Operations	2005	32,274	\$14,853,881	\$26,064	\$567,978	\$2,733,009	\$2,967,551	19.8%	\$2,967,551		
ODOC - Warner Creek Correctional Facility	1056	35-Bldg C - Educational/Medical	2005	15,447	\$6,698,534	\$7,040	\$67,017	\$0	\$903,977	12.0%	\$903,977		
ODOC - Warner Creek Correctional Facility	1055	35-Bldg E - Recreation Building	2005	5,067	\$2,108,606	\$0	\$27,845	\$39,721	\$67,566	3.2%	\$67,566		
ODOC - Warner Creek Correctional Facility	1064	35-Bldg F - Housing	2005	50,230	\$20,105,702	\$0	\$0	\$939,195	\$939,195	4.7%	\$939,195		
ODOC - Warner Creek Correctional Facility	1053	35-Bldg H - Workforce	2005	5,000	\$2,422,230	\$0	\$36,599	\$143,062	\$181,661	7.5%	\$181,661		
		Subtotal Over \$1M CRV			5,172,608	3,435,924,317	\$50,404,192	\$91,260,692	\$208,553,298	\$0	\$350,218,180	10.2%	\$350,218,180
		Remove baked in soft costs @ 40%			5,400,364	3,490,730,187	\$54,234,466	\$93,416,558	\$218,827,261	\$0	\$366,478,284	10.5%	\$366,478,284
		Replace with soft costs @ 52%			5,863,252	3,789,935,632	\$8,883,134	10,142,691	237,583,883	0	397,800,708	10.5%	\$397,800,708

Maintenance Priority 1-4 for Owned Assets Under \$1M CRV (Optional) - This is not required for the budget submission or CPAB Report. Agencies may choose to complete.

Campus	Building ID	Building Name	Construction Year	Gross Square Footage	Current Valuation (Calculated)	Priority 1 - Currently Critical (Life Safety, O&M, Compliance)	Priority 2 - Currently Critical (Near Term Capital Expenditure, Functionality)	Priority 3 - Net Net Change (Mid-Term)	Leave Blank	Total (G+H+I)	Agency Input			
											F	G	H	I
ODOC - Central Distribution Center	878	Modular Building Unit	2008	1,848	\$66,671	\$13,168	\$0	\$30,198	\$43,366	65.1%	\$43,366			
ODOC - Coffee Creek Correctional Facility	1216	CCCF - Transit Shelter	2002	288	\$24,232	\$0	\$0	\$0	\$0	0.0%	\$0			
ODOC - Coffee Creek Correctional Facility	1221	Electrical Substations #1, #2, #3	2001	3,055	\$665,187	\$0	\$0	\$0	\$0	0.0%	\$0			
ODOC - Coffee Creek Correctional Facility	1233	Greenhouse	2001	735	\$95,632	\$0	\$0	\$0	\$0	0.0%	\$0			
ODOC - Coffee Creek Correctional Facility	1246	Headstart Program Space	2000	2,800	\$884,723	\$26,412	\$128,024	\$177,246	\$331,682	37.5%	\$331,682			
ODOC - Coffee Creek Correctional Facility	1223	House/Residence with 2 Car Garage	2000	3,600	\$853,866	\$0	\$0	\$0	\$0	0.0%	\$0			
ODOC - Coffee Creek Correctional Facility	1211	Landscaping Building	2001	1,210	\$726,298	\$0	\$0	\$13,347	\$13,347	1.8%	\$13,347			
ODOC - Coffee Creek Correctional Facility	1202	Metal Shop with Storage Shed	1999	3,720	\$909,108	\$0	\$116,640	\$21,251	\$137,791	15.2%	\$137,791			
ODOC - Coffee Creek Correctional Facility	1231	Minimum Security Shed	2000	0	\$1,067,929	\$0	\$0	\$0	\$0	0.0%	\$0			
ODOC - Coffee Creek Correctional Facility	1220	Pole Barn	2000	14,250	\$766,185	\$0	\$112,394	\$28,965	\$141,358	18.4%	\$141,358			
ODOC - Coffee Creek Correctional Facility	1237	Pump House	2001	150	\$11,874	\$0	\$389	\$14,929	\$15,318	13.7%	\$15,318			
ODOC - Coffee Creek Correctional Facility	1225	Radio Communication Building	2007	324	\$113,945	\$0	\$0	\$11,255	\$11,255	9.9%	\$11,255			
ODOC - Coffee Creek Correctional Facility	1245	Sewer Headworks Building	2001	1,700	\$1,273,884	\$0	\$2,712	\$55,818	\$58,529	4.6%	\$58,529			
ODOC - Coffee Creek Correctional Facility	1243	Sitework and Hardscaping (Inside the Fence)	2000	0	\$1	\$0	\$0	\$0	\$0	0.0%	\$0			
ODOC - Coffee Creek Correctional Facility	1235	Sitework and Hardscaping (Outside the Fence)	2000	0	\$1	\$3,016,708	\$0	\$0	\$3,016,708	201353040.2%	\$3,016,708			
ODOC - Coffee Creek Correctional Facility	1222	Storage #1, #2, #3	2001	240	\$371,700	\$0	\$0	\$2,854	\$2,854	0.8%	\$2,854			
ODOC - Coffee Creek Correctional Facility	1240	Storage Garage	2001	595	\$139,394	\$0	\$20,705	\$17,916	\$38,621	27.7%	\$38,621			
ODOC - Coffee Creek Correctional Facility	1236	Warehouse	2001	5,300	\$1,203,993	\$0	\$0	\$58,923	\$58,923	7.1%	\$58,923			
ODOC - Coffee Creek Correctional Facility	1238	Wellness Building	1											

ODOC - Oregon State Correctional Institution	3322	Vehicle Inspection Gate	1980	2,121	\$165,450	\$11,137	\$709	\$41,442	\$53,288	32.2%	\$53,288	
ODOC - Oregon State Correctional Institution	3323	Vehicle Storage Building	1960	6,000	\$1,027,787	\$0	\$144,203	\$115,617	\$259,821	25.3%	\$259,821	
ODOC - Oregon State Penitentiary	4910	Arsenal Watch Tower 1	1955	498	\$454,318	\$0	\$0	\$0	\$0	0.0%	\$0	
ODOC - Oregon State Penitentiary	4911	Roller Plant Storage	1984	650	\$710,150	\$0	\$48,269	\$39,294	\$85,663	40.8%	\$85,663	
ODOC - Oregon State Penitentiary	4886	Diesel Storage Tanks	2001	3,192	\$458,195	\$0	\$15,341	\$0	\$15,341	3.3%	\$15,341	
ODOC - Oregon State Penitentiary	4924	DOC Paint Storage	1950	750	\$242,409	\$0	\$38,344	\$41,666	\$80,010	33.0%	\$80,010	
ODOC - Oregon State Penitentiary	4897	Domestic Irrigation Pumphouse, Mill Creek Pump	1965	484	\$425,289	\$0	\$6,378	\$99,020	\$107,398	25.3%	\$107,398	
ODOC - Oregon State Penitentiary	4902	Dry Kiln / Hopper / Flammable Storage / Compressor Room	1,000	\$518,533	\$0	\$5,569	\$0	\$5,569	1.1%	\$5,569		
ODOC - Oregon State Penitentiary	4918	Electric Substitutions 1 to 7	2012	420	\$476,229	\$0	\$0	\$0	\$0	0.0%	\$0	
ODOC - Oregon State Penitentiary	4915	Exterior Pulling Hose	1984	2,100	\$491,850	\$8,972	\$42,637	\$304,155	\$355,665	72.3%	\$355,665	
ODOC - Oregon State Penitentiary	4885	Group Living	1974	2,500	\$0	\$0	\$0	\$0	\$0	#DIV/0!	\$0	
ODOC - Oregon State Penitentiary	4893	Hazardous Waste Storage	1982	540	\$174,533	\$1,562	\$0	\$4,422	\$5,984	3.4%	\$5,984	
ODOC - Oregon State Penitentiary	4905	Mini Golf Shack	1970	192	\$79,422	\$0	\$10,648	\$12,737	\$23,385	29.4%	\$23,385	
ODOC - Oregon State Penitentiary	4919	OCE Paint Storage Building	1,080	\$349,066	\$0	\$43,085	\$46,860	\$89,945	25.8%	\$89,945		
ODOC - Oregon State Penitentiary	4914	Old Motor Pool Building	1964	1,200	\$403,342	\$0	\$70,366	\$28,924	\$99,290	24.6%	\$99,290	
ODOC - Oregon State Penitentiary	4886	Original Entrance and Gate	1920	200	\$65,055	\$0	\$3,287	\$2,799	\$6,086	9.3%	\$6,086	
ODOC - Oregon State Penitentiary	4884	Residence 1 and Garage	1935	3,600	\$653,866	\$0	\$125,021	\$625,455	\$750,476	87.9%	\$750,476	
ODOC - Oregon State Penitentiary	4915	Residence 4	1950	1,633	\$387,323	\$0	\$0	\$191,326	\$191,326	49.4%	\$191,326	
ODOC - Oregon State Penitentiary	4882	Residence 5 and 6	1955	4,730	\$1,121,888	\$0	\$17,087	\$258,810	\$275,897	24.6%	\$275,897	
ODOC - Oregon State Penitentiary	4892	Sallyport Prisoner Entrances	1989	2,520	\$75,987	\$0	\$0	\$34,718	\$34,718	46.2%	\$34,718	
ODOC - Oregon State Penitentiary	4894	Security Shack	1997	1,358	\$893,372	\$0	\$0	\$34,096	\$34,096	3.9%	\$34,096	
ODOC - Oregon State Penitentiary	4883	Sewer/Muffin Monster	1970	168	\$193,968	\$0	\$0	\$106,995	\$106,995	55.2%	\$106,995	
ODOC - Oregon State Penitentiary	4929	Special Management Housing Visitor Entrance	1991	1,130	\$365,227	\$0	\$6,813	\$158,609	\$165,423	45.3%	\$165,423	
ODOC - Oregon State Penitentiary	4896	Storage (near A Block)			\$0	\$0	\$0	\$0	\$0	#DIV/0!	\$0	
ODOC - Oregon State Penitentiary	4896	Vehicle Wash	2010	800	\$105,888	\$0	\$0	\$2,170	\$2,170	2.0%	\$2,170	
ODOC - Oregon State Penitentiary	4926	Visiting Room			\$0	\$0	\$0	\$0	\$0	#DIV/0!	\$0	
ODOC - Oregon State Penitentiary	4888	Warehouse	1954	2,400	\$775,707	\$0	\$2,087	\$230,234	\$232,321	29.7%	\$232,321	
ODOC - Oregon State Penitentiary	4926	Watch Tower 10	1952	392	\$488,064	\$0	\$22,079	\$14,954	\$37,033	7.6%	\$37,033	
ODOC - Oregon State Penitentiary	4908	Water Quality Stripping Towers	1998	738	\$439,176	\$0	\$43,508	\$215,815	\$259,333	59.0%	\$259,333	
ODOC - Oregon State Penitentiary Minimum	1506	Electrical Mechanical Building	1992	432	\$376,214	\$0	\$0	\$162,559	\$162,559	43.2%	\$162,559	
ODOC - Oregon State Penitentiary Minimum	1511	Modular Building	3,600	\$902,557	\$0	\$0	\$118,210	\$118,210	23.5%	\$118,210		
ODOC - Oregon State Penitentiary Minimum	1505	Physical Plant Shop and Storage	1991	1,650	\$195,683	\$0	\$28,927	\$87,756	\$116,683	59.6%	\$116,683	
ODOC - Oregon State Penitentiary Minimum	1513	Pole Building	1983	5,000	\$268,838	\$0	\$34,012	\$365,684	\$399,697	148.7%	\$399,697	
ODOC - Oregon State Penitentiary Minimum	1504	Storage Building	1974	295	\$5,164	\$0	\$0	\$10,220	\$10,220	19.7%	\$10,220	
ODOC - Oregon State Penitentiary Minimum	1512	Storage Sheds	1985	96	\$2,633	\$0	\$434	\$6,541	\$6,975	264.9%	\$6,975	
ODOC - Powder River Correctional Facility	5913	Bus Barn	1997	5,029	\$1,046,732	\$0	\$0	\$33,701	\$33,701	3.2%	\$33,701	
ODOC - Powder River Correctional Facility	5918	Swerved Recreation	2002	2,300	\$78,114	\$0	\$0	\$10,430	\$10,430	13.4%	\$10,430	
ODOC - Powder River Correctional Facility	5914	Doc Kennel/Training Program	2000	600	\$39,585	\$0	\$0	\$50,685	\$50,685	127.8%	\$50,685	
ODOC - Powder River Correctional Facility	5915	Greenhouse	1997	1,500	\$159,485	\$0	\$17,285	\$20,259	\$37,544	23.5%	\$37,544	
ODOC - Powder River Correctional Facility	5910	Sitework, Landscaping, Outdoor Religious Area ar	1990	0	\$621,698	\$0	\$0	\$250,100	\$250,100	40.2%	\$250,100	
ODOC - Powder River Correctional Facility	5911	Step-Forward Building	2004	1,500	\$311,839	\$0	\$0	\$20,396	\$20,396	6.5%	\$20,396	
ODOC - Santiam Correctional Institution	4741	Auto Shop/Maintenance	1950	3,050	\$996,405	\$0	\$7,145	\$491,716	\$498,861	50.1%	\$498,861	
ODOC - Santiam Correctional Institution	4742	Overhead Recreation Area	1,600	\$167,491	\$0	\$0	\$154,445	\$154,445	247.1%	\$154,445		
ODOC - Santiam Correctional Institution	4742	Gatehouse/Visitors Center	2000	400	\$54,245	\$0	\$1,855	\$37,411	\$39,266	72.4%	\$39,266	
ODOC - Santiam Correctional Institution	4745	Unit 5	1980	3,024	\$422,149	\$0	\$0	\$197,794	\$197,794	46.9%	\$197,794	
ODOC - SFFCC	5929	Cabin #1 & Weight Room	1988	1,760	\$621,027	\$0	\$5,388	\$60,845	\$66,233	10.7%	\$66,233	
ODOC - SFFCC	5928	Cabin #10 & 11	1988	1,760	\$621,027	\$0	\$0	\$20,765	\$79,291	16.1%	\$100,056	
ODOC - SFFCC	5925	Cabin #12 & 13	1988	1,760	\$621,027	\$0	\$0	\$20,765	\$81,488	16.5%	\$102,253	
ODOC - SFFCC	5927	Cabin #2 & 3	1988	1,760	\$621,027	\$0	\$0	\$6,630	\$92,056	14.8%	\$98,686	
ODOC - SFFCC	5926	Cabin #4 & 5	1988	1,760	\$621,027	\$0	\$0	\$6,630	\$81,488	14.2%	\$88,118	
ODOC - SFFCC	5918	Cabin #6 & 7	1988	1,760	\$621,027	\$0	\$0	\$6,630	\$81,488	14.2%	\$88,118	
ODOC - SFFCC	5937	Cabin #8 & 9	1988	1,760	\$621,027	\$0	\$33,087	\$74,347	\$107,433	17.3%	\$107,433	
ODOC - SFFCC	5931	Education Trailer	170	\$59,984	\$0	\$2,297	\$2,388	\$4,685	\$7,781	\$4,685	\$4,685	
ODOC - SFFCC	5919	Electrical Service Building	96	\$33,872	\$0	\$659	\$114,167	\$114,825	\$39,091	\$114,825	\$114,825	
ODOC - SFFCC	5920	Emergency Generator Building	249	\$84,683	\$0	\$0	\$0	\$0	\$0	0.0%	\$0	
ODOC - SFFCC	5915	Greenhouse/Storage	216	\$76,218	\$0	\$0	\$3,892	\$3,892	\$3,892	5.1%	\$3,892	
ODOC - SFFCC	5930	Lower Sewer Storage	86	\$30,346	\$0	\$0	\$0	\$24,264	\$24,264	80.0%	\$24,264	
ODOC - SFFCC	5940	Lower TV/Program Services Bldg	2,000	\$721,826	\$0	\$0	\$0	\$0	\$0	0.0%	\$0	
ODOC - SFFCC	5932	New Sewage Building	48	\$35,286	\$0	\$0	\$0	\$372	\$372	1.6%	\$372	
ODOC - SFFCC	5944	Observation/Jury Building	2,400	\$892,429	\$0	\$123,937	\$0	\$123,937	\$123,937	14.0%	\$123,937	
ODOC - SFFCC	5913	Officers Quarters	2,360	\$832,741	\$2,605	\$15,842	\$303,688	\$322,134	\$322,134	38.7%	\$322,134	
ODOC - SFFCC	5941	Physical Plant Annex Building	250	\$88,214	\$0	\$0	\$3,425	\$3,425	\$3,425	3.9%	\$3,425	
ODOC - SFFCC	5922	Physical Plant Building	1,175	\$441,070	\$0	\$0	\$36,054	\$36,054	\$36,054	8.2%	\$36,054	
ODOC - SFFCC	5942	Program Services Bldg/Sewing & Storage/Exercise	2,080	\$705,710	\$0	\$0	\$46,649	\$46,649	\$46,649	6.6%	\$46,649	
ODOC - SFFCC	5938	Quarrel Hut	876	\$306,984	\$0	\$0	\$46,628	\$41,435	\$41,435	16.8%	\$41,435	
ODOC - SFFCC	5936	Radio Building	100	\$35,296	\$0	\$0	\$20,798	\$20,798	\$20,798	59.6%	\$20,798	
ODOC - SFFCC	5917	Recycle Building, at the end of the large parking lot	0	\$0	\$0	\$0	\$0	\$0	\$0	#DIV/0!	\$0	
ODOC - SFFCC	5921	Storage Building - Old Cabin (Moved up Hill)	200	\$70,571	\$0	\$0	\$2,299	\$2,299	\$2,299	3.3%	\$2,299	
ODOC - SFFCC	5924	Unclothed Search Building, next to large parking lot	200	\$70,571	\$0	\$0	\$1,831	\$1,831	\$1,831	2.6%	\$1,831	
ODOC - SFFCC	5928	Upper Sewer Storage, just before new sewage building	40	\$12,702	\$0	\$0	\$854	\$854	\$854	5.1%	\$854	
ODOC - SFFCC	5933	Upper TV/Library/Sports TV Rm	1,540	\$343,098	\$0	\$22,523	\$0	\$22,523	\$22,523	4.2%	\$22,523	
ODOC - SFFCC	5914	Water Storage at Cistern, up Jordan cutoff Rd. approx. 1/2 M	48	\$16,938	\$0	\$0	\$3,292	\$3,292	\$3,292	19.4%	\$3,292	
ODOC - Snake River Correctional Institution	3990	Emergency Generator Building and Propane	1992	600	\$688,462	\$0	\$4,773	\$4,773	\$4,773	0.8%	\$4,773	
ODOC - Snake River Correctional Institution	3962	Outside Physical Plant Shops	1992	3,800	\$492,207	\$0	\$34,664	\$135,627	\$170,291	34.6%	\$170,291	
ODOC - Snake River Correctional Institution	3968	Radio Communications Building	2008	371	\$234,152	\$0	\$0	\$2,743	\$2,743	1.2%	\$2,743	
ODOC - Snake River Correctional Institution	3967	Shooting Range Office	1992	1,300	\$491,096	\$0	\$0	\$0	\$0	0.0%	\$0	
ODOC - Snake River Correctional Institution	3980	Storage Shed	1992	400	\$88,438	\$0	\$0	\$16,498	\$16,498	18.8%	\$16,498	
ODOC - Snake River Correctional Institution	3976	Training Building	1992	3,000	\$650,953	\$0	\$93,337	\$68,585	\$161,922	24.9%	\$161,922	
ODOC - Snake River Correctional Institution	3988	Transport Building	2001	4,056	\$895,164	\$0	\$33,858	\$107,210	\$141,068	15.8%	\$141,068	
ODOC - Two Rivers Correctional Institution	3213	Food Bank Building	2000	2,566	\$761,506	\$0	\$1,237	\$1,237	\$1,237	0.2%	\$1,237	
ODOC - Two Rivers Correctional Institution	3207	Greenhouse	2000	3,250	\$422,415	\$0	\$0	\$0	\$0	0.0%	\$0	
ODOC - Two Rivers Correctional Institution	3215	Radio Building	2000	160	\$317,543	\$0	\$0	\$0	\$0	0.0%	\$0	
ODOC - Warner Creek Correctional Facility	1060	35-Bldg G - Outdoor Religious	2005	314	\$284,490	\$0	\$4,503	\$0	\$4,503	1.6%	\$4,503	
ODOC - Warner Creek Correctional Facility	1057	35-Bldg J - Radio Building	2005	343	\$408,636	\$791	\$573	\$17,550	\$18,913	4.6%	\$18,913	
ODOC - Warner Creek Correctional Facility	1063	35-Bldg K - Storage Building	2007	3,200	\$203,959	\$0	\$0	\$0	\$0	0.0%	\$0	
ODOC - Warner Creek Correctional Facility	1062	35-Bldg L - Equipment Building	2007	1,680	\$129,212	\$0	\$0	\$0	\$0	0.0%	\$0	
ODOC - Warner Creek Correctional Facility	1065	35-Bldg M - Greenhouse	2006	1,302	\$73,838	\$0	\$0	\$0	\$0	0.0%	\$0	
		Subtotal Under \$1M CRV		227,756	\$4,806,878	\$3,830,274	\$2,155,866	\$10,273,964	\$0	\$16,260,104	29.7%	\$16,260,104
		Remove baked in soft costs @ 40%		162,683	\$8,147,050	2,735,910	1,539,904	7,338,546	0	11,614,360	29.7%	\$11,614,360
		Replace with soft costs @ 52%		247,278	\$9,503,516	4,158,583	2,340,655	11,154,590	0	17,653,827	29.7%	\$17,653,827

Definitions

Current Maintenance Priority 1-4	1	Current costs for all facility maintenance and deferred maintenance except those that are covered in operations and maintenance budgets (routine maintenance).
Construction Year	2	Original Construction Year
Current Replacement Value	3	Current Replacement Value Reported to Risk Management or Calculated Replacement Value Reported from Facility Conditions Assessment (FCA)
Priority One: Currently Critical	4	From the Budget Instruction: Priority One projects are conditions that require immediate action in order to address code and accessibility violations that affect life safety. Building envelope issues (roof, sides, windows and doors) that pose immediate safety concerns should be included in this category.
Priority Two: Potentially Critical	5	From the Budget Instruction: Priority Two projects are to be undertaken in the near future to maintain the integrity of the facility and accommodate current agency program requirements. Included are systems that are functioning improperly or at limited capacity, and if not addressed, will cause additional system deterioration and added repair costs. Also included are significant building envelope issues (roof, sides, windows and doors) that, if not addressed, will cause additional system deterioration and added repair costs.
Priority Three: Necessary - Not yet Critical	6	From the Budget Instructions: Priority Three projects could be undertaken in the near to mid-term future to maintain the integrity of a building and to address building systems, building components and site work that have reached or exceeded their useful life based on industry standards, but are still functioning in some capacity. These projects may require attention currently to avoid deterioration, potential downtime and consequently higher costs if corrective action is deferred.
Priority Four: Seismic and Natural Hazard Remediation	7	From the Budget Instructions: Priority Four projects improve seismic performance of buildings constructed prior to 1995 building code changes to protect occupants, minimize building damage and speed recovery after a major earthquake. Projects also include those that mitigate significant flood hazards.
Facility Condition Index	8	A calculated measure of facility condition relative to its current replacement value (expressed as a percentage)

ODOC - Oregon State Penitentiary	4919	OCE Paint Storage Building	1080	\$349,066	\$0	\$43,085	\$46,860	\$0	\$89,945	26.8%	\$89,945		
ODOC - Oregon State Penitentiary	4914	Old Motor Pool Building	1954	\$403,549	\$0	\$82,923	\$28,924	\$0	\$111,847	27.7%	\$111,847		
ODOC - Oregon State Penitentiary	4886	Original Entrance and Gate	1920	\$00	\$65,095	\$0	\$3,287	\$21,730	\$0	\$26,017	38.4%	\$26,017	
ODOC - Oregon State Penitentiary	4884	Residence 1 and Garage	1935	3,600	\$85,866	\$0	\$125,021	\$7,115,607	\$0	\$340,628	89.4%	\$840,628	
ODOC - Oregon State Penitentiary	4915	Residence 4	1950	1,633	\$387,323	\$7,730	\$0	\$275,378	\$0	\$283,108	73.1%	\$283,108	
ODOC - Oregon State Penitentiary	4882	Residence 5 and 6	1955	4,730	\$1,121,888	\$0	\$17,087	\$709,808	\$0	\$726,894	64.8%	\$726,894	
ODOC - Oregon State Penitentiary	4892	Sallyport Prisoner Entrances	1989	2,520	\$75,067	\$6,782	\$0	\$39,811	\$0	\$46,693	62.2%	\$46,693	
ODOC - Oregon State Penitentiary	4894	Security Shack	1997	1,358	\$89,872	\$0	\$0	\$167,459	\$0	\$167,459	18.8%	\$167,459	
ODOC - Oregon State Penitentiary	4883	Sawer/Mulfin Monster	1970	168	\$193,968	\$0	\$0	\$106,995	\$0	\$106,995	55.2%	\$106,995	
ODOC - Oregon State Penitentiary	4929	Special Management Housing Visitor Entrance	1991	1,130	\$365,227	\$3,170	\$6,813	\$269,650	\$0	\$279,634	76.6%	\$279,634	
ODOC - Oregon State Penitentiary	4896	Storage (near A Block)			\$0	\$0	\$0	\$0	\$0	#DIV/0!	\$0		
ODOC - Oregon State Penitentiary	4898	Vehicle Wash	2010	800	\$105,888	\$0	\$0	\$19,585	\$0	\$19,585	18.5%	\$19,585	
ODOC - Oregon State Penitentiary	4920	Visiting Room			\$0	\$0	\$0	\$0	\$0	#DIV/0!	\$0		
ODOC - Oregon State Penitentiary	4888	Warehouse	1954	2,400	\$775,707	\$0	\$2,087	\$2,230,234	\$0	\$2,232,321	287.8%	\$2,232,321	
ODOC - Oregon State Penitentiary	4928	Watch Tower 10	1952	392	\$488,064	\$753	\$22,079	\$64,942	\$0	\$77,774	15.9%	\$77,774	
ODOC - Oregon State Penitentiary	4908	Water Quality Strippping Towers	1988	736	\$439,176	\$0	\$43,508	\$215,815	\$0	\$259,323	59.0%	\$259,323	
ODOC - Oregon State Penitentiary Minimum	1506	Electrical Mechanical Building	1992	432	\$372,314	\$0	\$0	\$167,409	\$0	\$167,409	44.5%	\$167,409	
ODOC - Oregon State Penitentiary Minimum	1511	Modular Building	1992	3,600	\$502,557	\$2,481	\$0	\$473,086	\$0	\$475,566	94.6%	\$475,566	
ODOC - Oregon State Penitentiary Minimum	1505	Physical Plant Shop and Storage	1991	1,850	\$195,663	\$0	\$28,827	\$138,434	\$0	\$167,261	85.5%	\$167,261	
ODOC - Oregon State Penitentiary Minimum	1513	Pole Building	1993	5,000	\$268,838	\$0	\$34,012	\$366,769	\$0	\$400,781	149.1%	\$400,781	
ODOC - Oregon State Penitentiary Minimum	1504	Storage Building	1974	2,955	\$5,164	\$0	\$0	\$10,220	\$0	\$10,220	197.8%	\$10,220	
ODOC - Oregon State Penitentiary Minimum	1512	Storage Sheds	1985	96	\$2,653	\$0	\$434	\$6,641	\$0	\$6,975	264.9%	\$6,975	
ODOC - Powder River Correctional Facility	5013	Bus Barn	1997	505	\$1,046,732	\$0	\$0	\$69,583	\$0	\$69,583	6.6%	\$69,583	
ODOC - Powder River Correctional Facility	5018	Covered Recreation	2002	2,300	\$78,114	\$0	\$0	\$20,861	\$0	\$20,861	26.7%	\$20,861	
ODOC - Powder River Correctional Facility	5012	Dog Kennel/Training Program	2000	600	\$189,565	\$0	\$0	\$50,662	\$0	\$50,662	26.7%	\$50,662	
ODOC - Powder River Correctional Facility	5016	Overhouse	1997	1,500	\$159,465	\$0	\$17,285	\$30,259	\$0	\$37,544	23.5%	\$37,544	
ODOC - Powder River Correctional Facility	5010	Silvework, Hardscaping, Outdoor Religious Area	1990	0	\$621,698	\$0	\$26,384	\$250,100	\$0	\$276,494	44.5%	\$276,494	
ODOC - Powder River Correctional Facility	5011	Shop-Forward Building	2004	1,500	\$311,839	\$0	\$0	\$20,396	\$0	\$20,396	6.5%	\$20,396	
ODOC - Santiam Correctional Institution	4741	Auto Shop/Maintenance	1950	3,050	\$996,405	\$0	\$8,319	\$520,355	\$0	\$526,674	53.1%	\$526,674	
ODOC - Santiam Correctional Institution	4744	Covered Recreation Area	1960	600	\$62,491	\$0	\$0	\$154,445	\$0	\$154,445	247.1%	\$154,445	
ODOC - Santiam Correctional Institution	4742	Greenhouse/Visitors Center	2000	400	\$54,245	\$0	\$3,624	\$60,441	\$0	\$64,065	118.1%	\$64,065	
ODOC - Santiam Correctional Institution	4745	Unit 5	1980	3,024	\$422,149	\$0	\$0	\$253,374	\$0	\$253,374	60.0%	\$253,374	
ODOC - SFFC	5929	Cabin #1 & Weight Room	1988	1,760	\$621,027	\$0	\$20,584	\$112,517	\$0	\$133,101	21.4%	\$133,101	
ODOC - SFFC	5934	Cabin #10 & 11	1988	1,760	\$621,027	\$0	\$35,961	\$123,221	\$0	\$159,182	25.6%	\$159,182	
ODOC - SFFC	5925	Cabin #12 & 13	1988	1,760	\$621,027	\$0	\$28,806	\$120,135	\$0	\$148,940	24.0%	\$148,940	
ODOC - SFFC	5923	Cabin #2 & 3	1988	1,760	\$621,027	\$0	\$21,806	\$124,073	\$0	\$145,879	23.5%	\$145,879	
ODOC - SFFC	5926	Cabin #4 & 5	1988	1,760	\$621,027	\$0	\$21,826	\$120,135	\$0	\$141,961	22.9%	\$141,961	
ODOC - SFFC	5918	Cabin #6 & 7	1988	1,760	\$621,027	\$0	\$21,826	\$120,135	\$0	\$141,961	22.9%	\$141,961	
ODOC - SFFC	5937	Cabin #8 & 9	1988	1,760	\$621,027	\$0	\$54,432	\$106,844	\$0	\$161,276	26.0%	\$161,276	
ODOC - SFFC	5930	Education Trailer	1970	170	\$59,984	\$0	\$2,297	\$61,628	\$0	\$63,925	89.7%	\$63,925	
ODOC - SFFC	5919	Electrical Service Building	1970	96	\$33,872	\$0	\$2,008	\$114,167	\$0	\$116,174	343.0%	\$116,174	
ODOC - SFFC	5920	Emergency Generator Building	240	\$84,683	\$0	\$0	\$0	\$0	\$0	0.0%	\$0		
ODOC - SFFC	5915	Greenhouse/Storage	216	\$76,218	\$0	\$0	\$3,892	\$0	\$3,892	5.1%	\$3,892		
ODOC - SFFC	5936	Lower Sewer Storage	86	\$30,346	\$0	\$1,481	\$24,264	\$0	\$25,744	84.8%	\$25,744		
ODOC - SFFC	5940	Lower TV/Program Services Bldg	2,000	\$721,826	\$0	\$0	\$0	\$0	\$0	0.0%	\$0		
ODOC - SFFC	5932	New Sewage Building	48	\$35,286	\$0	\$493	\$572	\$0	\$1,066	3.0%	\$1,066		
ODOC - SFFC	5944	Observation/laundry Building	2,445	\$882,429	\$0	\$2,195,370	\$0	\$2,195,370	\$0	\$4,390,740	248.8%	\$4,390,740	
ODOC - SFFC	5913	Officers Quarters	2,360	\$832,741	\$2,605	\$17,899	\$303,688	\$0	\$324,192	39.9%	\$324,192		
ODOC - SFFC	5941	Physical Plant Annex Building	2,350	\$82,214	\$0	\$1,050	\$4,671	\$0	\$6,371	7.8%	\$6,371		
ODOC - SFFC	5922	Physical Plant Building	1,175	\$441,070	\$0	\$4,080	\$48,675	\$0	\$52,755	12.0%	\$52,755		
ODOC - SFFC	5942	Program Services Bldg/Sewage & Storage/Exercise	2,080	\$705,710	\$0	\$5,553	\$91,445	\$0	\$96,999	13.7%	\$96,999		
ODOC - SFFC	5939	Quonset Hut	870	\$306,984	\$0	\$56,359	\$17,917	\$0	\$74,276	24.2%	\$74,276		
ODOC - SFFC	5936	Radio Building	100	\$33,286	\$0	\$26,724	\$0	\$0	\$26,724	75.7%	\$26,724		
ODOC - SFFC	5917	Radio Building, at the end of the large parking lot	0	\$0	\$0	\$0	\$0	\$0	\$0	#DIV/0!	\$0		
ODOC - SFFC	5921	Storage Building - Old Cabin (Moved up Hill)	200	\$70,571	\$0	\$0	\$36,319	\$0	\$36,319	51.5%	\$36,319		
ODOC - SFFC	5924	Unclassified Search Building, next to large parking lot	200	\$70,571	\$0	\$2,370	\$2,917	\$0	\$5,287	7.5%	\$5,287		
ODOC - SFFC	5928	Upper Sewer Storage, just before new sewage building	40	\$12,702	\$0	\$564	\$654	\$0	\$1,218	9.6%	\$1,218		
ODOC - SFFC	5933	Upper TV/laundry/Sports TV Rm	2001	1,540	\$543,398	\$0	\$158,695	\$0	\$158,695	29.2%	\$158,695		
ODOC - SFFC	5914	Water Storage at Cistem, up Jordan cutoff Rd. approx. 1/2 f	48	\$16,938	\$0	\$0	\$3,292	\$0	\$3,292	19.4%	\$3,292		
ODOC - Snake River Correctional Institution	3990	Emergency Generator Building and Propane	1992	600	\$588,462	\$0	\$0	\$4,773	\$0	\$4,773	0.8%	\$4,773	
ODOC - Snake River Correctional Institution	3962	Outside Physical Plant Shops	1992	3,800	\$492,207	\$0	\$34,664	\$135,627	\$0	\$170,291	34.6%	\$170,291	
ODOC - Snake River Correctional Institution	3968	Radio Communications Building	2008	371	\$234,152	\$0	\$0	\$2,743	\$0	\$2,743	1.2%	\$2,743	
ODOC - Snake River Correctional Institution	3967	Shooting Range Office	1992	1,300	\$491,686	\$0	\$0	\$0	\$0	0.0%	\$0		
ODOC - Snake River Correctional Institution	3980	Storage Shed	1992	400	\$98,438	\$0	\$0	\$19,296	\$0	\$19,296	19.6%	\$19,296	
ODOC - Snake River Correctional Institution	3976	Training Building	1992	3,000	\$650,953	\$0	\$93,957	\$93,393	\$0	\$187,349	28.8%	\$187,349	
ODOC - Snake River Correctional Institution	3988	Transport Building	2001	4,056	\$895,164	\$0	\$33,858	\$107,210	\$0	\$141,068	15.8%	\$141,068	
ODOC - Two Rivers Correctional Institution	3213	Food Bank Building	2005	2,356	\$76,506	\$0	\$0	\$1,237	\$0	\$1,237	0.2%	\$1,237	
ODOC - Two Rivers Correctional Institution	3207	Greenhouse	2000	3,250	\$422,415	\$0	\$0	\$0	\$0	0.0%	\$0		
ODOC - Two Rivers Correctional Institution	3218	Radio Building	2000	160	\$317,543	\$0	\$0	\$0	\$0	0.0%	\$0		
ODOC - Warner Creek Correctional Facility	1060	35-Bldg G - Outdoor Religious	2005	314	\$284,490	\$0	\$4,503	\$0	\$4,503	1.6%	\$4,503		
ODOC - Warner Creek Correctional Facility	1057	35-Bldg J - Radio Building	2005	343	\$408,636	\$791	\$573	\$17,850	\$0	\$18,913	4.6%	\$18,913	
ODOC - Warner Creek Correctional Facility	1063	35-Bldg K - Storage Building	2007	3,200	\$209,869	\$0	\$0	\$4,383	\$0	\$4,383	2.1%	\$4,383	
ODOC - Warner Creek Correctional Facility	1062	35-Bldg L - Equipment Building	2007	1,680	\$129,212	\$0	\$0	\$0	\$0	0.0%	\$0		
ODOC - Warner Creek Correctional Facility	1065	35-Bldg M - Greenhouse	2006	1,302	\$73,838	\$0	\$0	\$0	\$0	0.0%	\$0		
Subtotal Under \$1M CRV				227,756	\$54,805,870	\$3,980,656	\$5,441,435	\$20,371,100	\$0	\$29,893,191	54.5%	\$0	\$29,893,191
Remove baked in soft costs @ 40%				\$38,147,050	\$2,843,326	\$3,858,168	\$14,550,786		\$21,352,279	54.544%			\$21,352,279
Replace with soft costs @ 52%				\$59,503,516	\$4,321,856	\$6,016,415	\$22,117,194		\$32,455,464	54.544%			\$32,455,464

Definitions	
1	Current costs for all facility maintenance and deferred maintenance except those that are covered in operations and maintenance budgets (routine maintenance).
2	Original Construction Year
3	Current Replacement Value Reported to Risk Management or Calculated Replacement Value Reported from Facility Conditions Assessment (FCA)
4	From the Budget Instruction: Priority One projects are conditions that require immediate action in order to address code and accessibility violations that affect life safety. Building envelope issues (roof, sides, windows and doors) that pose immediate safety concerns should be included in this category.
5	From the Budget Instruction: Priority Two projects are to be undertaken in the near future to maintain the integrity of the facility and accommodate current agency program requirements. Included are systems that are functioning improperly or at limited capacity, and if not addressed, will cause additional system deterioration and added repair costs. Also included are significant building envelope issues (roof, sides, windows and doors) that, if not addressed, will cause additional system deterioration and added repair costs.
6	From the Budget Instructions: Priority Three projects could be undertaken in the near to mid-term future to maintain the integrity of a building and to address building systems, building components and site work that have reached or exceeded their useful life based on industry standards, but are still functioning in some capacity. These projects may require attention currently to avoid deterioration, potential downtime and consequently higher costs if corrective action is deferred.
7	From the Budget Instructions: Priority Four projects improve seismic performance of buildings constructed prior to 1995 building code changes to protect occupants, minimize building damage and speed recovery after a major earthquake. Projects also include those that mitigate significant flood hazards.
8	A calculated measure of facility condition relative to its current replacement value (expressed as a percentage)

Facility Plan - Maintenance Priority 5
2025-27 Biennium

Agency Name Oregon Department of Corrections

Current Maintenance Priority 5¹ for Owned Assets Over \$1M CRV

Campus		Building ID		Building Name		Construction Year		Gross Square Footage		Current (Calculated) Replacement Value ³		Modernization Estimate		Notes/Description	
A		B		C		D		E		F		G		H	
		i		Plan Data (Incl Soft Costs)										Ag	
ODOC - Central Distribution Center		976		Canteen Warehouse		1969		22,000		\$7,762,824		\$0			
ODOC - Central Distribution Center		977		Distribution Center including Site Landscaping and		1969		279,208		\$98,593,622		\$0			
ODOC - Central Distribution Center		975		OCE Showroom/Offices		1969		11,650		\$2,907,028		\$0			
ODOC - Central Distribution Center		979		Truck Service Building		1969		11,164		\$3,939,280		\$0			
ODOC - Coffee Creek Correctional Facility		1225		Administration and Food Services		2001		13,872		\$11,805,002		\$0			
ODOC - Coffee Creek Correctional Facility		1236		Central Plant		0		4,400		\$4,040,423		\$0			
ODOC - Coffee Creek Correctional Facility		1234		Gatehouse (Admin, Visiting, Intake, Control)		2002		32,780		\$28,026,550		\$0			
ODOC - Coffee Creek Correctional Facility		1232		Medium Housing Unit O/Q		2007		26,270		\$36,450,419		\$0			
ODOC - Coffee Creek Correctional Facility		1224		Medium Security Correctional Facility		2002		271,500		\$276,975,582		\$0			
ODOC - Coffee Creek Correctional Facility		1239		Medium Security Fence		0		1		\$3,415,954		\$0			
ODOC - Coffee Creek Correctional Facility		1227		Minimum Housing		2001		50,008		\$19,213,786		\$0			
ODOC - Coffee Creek Correctional Facility		1241		Minimum Workforce		2001		5,760		\$3,543,214		\$0			
ODOC - Coffee Creek Correctional Facility		1242		OISC Records Facility		2001		9,906		\$6,029,316		\$0			
ODOC - Coffee Creek Correctional Facility		1244		Physical Plant and Office		2001		13,560		\$11,450,711		\$0			
ODOC - Coffee Creek Correctional Facility		1218		Program Services		2001		13,248		\$8,019,370		\$0			
ODOC - Coffee Creek Correctional Facility		1228		Special Housing		2001		16,032		\$9,696,870		\$0			
ODOC - Coffee Creek Correctional Facility		1219		Training Building		0		5,000		\$1,694,800		\$0			
ODOC - Columbia River Correctional Institution		1347		CRCI Main Facility		1990		119,883		\$94,442,991		\$0			
ODOC - Deer Ridge Correctional Institution		4701		Dorm Housing Unit H06		2007		24,532		\$19,453,913		\$0			
ODOC - Deer Ridge Correctional Institution		4692		Electrical Substations 1, 2, 3 and 4		2007		6,720		\$2,009,374		\$0			
ODOC - Deer Ridge Correctional Institution		4672		Food Services and Canteen/Mechanical		2007		37,757		\$28,536,369		\$0			
ODOC - Deer Ridge Correctional Institution		4703		Gate House		2007		33,049		\$21,753,800		\$0			
ODOC - Deer Ridge Correctional Institution		4676		High Custody Housing H03		2007		28,020		\$22,845,366		\$0			
ODOC - Deer Ridge Correctional Institution		4696		Housing Unit H07		2007		50,530		\$20,521,351		\$0			
ODOC - Deer Ridge Correctional Institution		4690		Housing Unit H08		2007		50,530		\$21,239,596		\$0			
ODOC - Deer Ridge Correctional Institution		4699		Inmate Housing Unit and Dorm Housing Unit H05		2007		29,220		\$22,304,110		\$0			
ODOC - Deer Ridge Correctional Institution		4675		Inmate Housing Unit H01		2007		33,840		\$28,552,012		\$0			
ODOC - Deer Ridge Correctional Institution		4689		Inmate Housing Unit H02		2007		33,840		\$29,058,855		\$0			
ODOC - Deer Ridge Correctional Institution		4682		Inmate Housing Unit H04		2007		33,840		\$29,030,696		\$0			
ODOC - Deer Ridge Correctional Institution		4673		Intake		2007		7,183		\$5,534,831		\$0			
ODOC - Deer Ridge Correctional Institution		4695		Medical Programs/Operations		2007		37,301		\$12,263,683		\$0			
ODOC - Deer Ridge Correctional Institution		4694		Minimum Health Services		2007		9,172		\$8,306,040		\$0			
ODOC - Deer Ridge Correctional Institution		4691		Multi-Purpose Building		2007		9,840		\$3,985,435		\$0			
ODOC - Deer Ridge Correctional Institution		4678		OCE Workforce/Physical Plant		2007		28,500		\$26,548,625		\$0			
ODOC - Deer Ridge Correctional Institution		4698		Operations Building		2007		24,956		\$16,006,837		\$0			

ODOC - Deer Ridge Correctional Institution	4686	Program Services Building	2007	16,530	\$6,702,170	\$0
ODOC - Deer Ridge Correctional Institution	4684	Sitework and Hardscaping (Inside the Fence)	2007	-	\$16,455,222	\$0
ODOC - Deer Ridge Correctional Institution	4669	Sitework and Hardscaping (Outside the Fence)	2007	-	\$11,888,178	\$0
ODOC - Deer Ridge Correctional Institution	4677	Warehouse	2007	33,000	\$10,665,949	\$0
ODOC - Deer Ridge Correctional Institution	4680	Workforce Building	2007	11,920	\$5,596,619	\$0
ODOC - Eastern Oregon Correctional Institution	3037	A-Building	1930	34,360	\$27,068,569	\$0
ODOC - Eastern Oregon Correctional Institution	3041	B-Building	1924	41,780	\$32,913,994	\$0
ODOC - Eastern Oregon Correctional Institution	3028	Carpentry Shop	1951	11,128	\$3,771,945	\$0
ODOC - Eastern Oregon Correctional Institution	3022	C-Building	1918	37,432	\$29,488,667	\$0
ODOC - Eastern Oregon Correctional Institution	3044	D-1 to D-4 South	1911	51,856	\$44,129,193	\$0
ODOC - Eastern Oregon Correctional Institution	3019	D-1 to D-5 North	1911	26,500	\$16,028,387	\$0
ODOC - Eastern Oregon Correctional Institution	3017	E-Building	1918	37,588	\$29,611,566	\$0
ODOC - Eastern Oregon Correctional Institution	3042	Emergency Generator Buildings	1984	1,517	\$1,873,083	\$0
ODOC - Eastern Oregon Correctional Institution	3030	F-Building	1924	44,924	\$35,390,813	\$0
ODOC - Eastern Oregon Correctional Institution	3025	Garment Factory	1989	46,400	\$17,040,811	\$0
ODOC - Eastern Oregon Correctional Institution	3035	G-Building	1930	34,144	\$26,898,405	\$0
ODOC - Eastern Oregon Correctional Institution	3040	H-1 and 2 Building and Segregation 1 and 2	1945	70,394	\$38,912,248	\$0
ODOC - Eastern Oregon Correctional Institution	3045	Heartbeat Monitor/Inspection Gate /Yard Towers/	0	480	\$5,867,626	\$0
ODOC - Eastern Oregon Correctional Institution	3018	H-Program Building (Workforce Development)	1999	4,500	\$1,525,320	\$0
ODOC - Eastern Oregon Correctional Institution	3026	HVAC, Maint 1-2 Building	1953	3,520	\$1,825,231	\$0
ODOC - Eastern Oregon Correctional Institution	3039	Inmate Dining Rooms	1987	10,675	\$5,014,095	\$0
ODOC - Eastern Oregon Correctional Institution	3033	Laundry Building	1928	12,774	\$4,588,054	\$0
ODOC - Eastern Oregon Correctional Institution	3027	Multi-Purpose Building	1988	12,998	\$4,405,800	\$0
ODOC - Eastern Oregon Correctional Institution	3038	Physical Plant	1956	15,292	\$12,913,296	\$0
ODOC - Eastern Oregon Correctional Institution	3034	Powerhouse Building	1911	7,615	\$5,682,305	\$0
ODOC - Eastern Oregon Correctional Institution	3024	Root Cellar, Landscape Building and Red Storage	1952	11,260	\$2,637,800	\$0
ODOC - Eastern Oregon Correctional Institution	3023	Sitework and Hardscaping (Inside the Fence)	1984	-	\$7,151,778	\$0
ODOC - Eastern Oregon Correctional Institution	3021	Sitework and Hardscaping (Outside the Fence)	1984	-	\$4,639,614	\$0
ODOC - Eastern Oregon Correctional Institution	3046	Yard Towers, Medium Security Fence and Security	1984	-	\$4,898,374	\$0
ODOC - Oregon State Correctional Institution	3326	Administration	1959	13,575	\$8,726,565	\$0
ODOC - Oregon State Correctional Institution	3309	Chapel, Barbershop, Visiting Room	1959	10,803	\$7,706,722	\$0
ODOC - Oregon State Correctional Institution	3318	Education Department	1959	8,083	\$5,184,455	\$0
ODOC - Oregon State Correctional Institution	3314	Food Service, Library and Hobby Shop	1959	27,152	\$24,704,951	\$0
ODOC - Oregon State Correctional Institution	3336	Heating Plant	1958	6,726	\$20,849,297	\$0
ODOC - Oregon State Correctional Institution	3307	Housing Unit 5, Security Manager, Hearings Office	1966	13,575	\$6,730,903	\$0
ODOC - Oregon State Correctional Institution	3321	Housing Units 1, 2, 3 and 4	1959	52,392	\$41,274,051	\$0
ODOC - Oregon State Correctional Institution	3325	Housing Units 11 and 13	1965	22,284	\$17,555,180	\$0
ODOC - Oregon State Correctional Institution	3310	Infirmiry and Dental Office	1959	4,700	\$3,135,669	\$0
ODOC - Oregon State Correctional Institution	3315	Multipurpose	1975	16,300	\$4,120,240	\$0
ODOC - Oregon State Correctional Institution	3328	OCE Work Area	1962	38,821	\$13,812,974	\$0
ODOC - Oregon State Correctional Institution	3312	Rec Yard, Racquetball, Sitework, Hardscaping	1959	-	\$4,431,205	\$0
ODOC - Oregon State Correctional Institution	3319	Residence 1, 2 and 3	1959	7,358	\$1,919,030	\$0
ODOC - Oregon State Correctional Institution	3320	Salvage Storage Building	1970	10,400	\$2,113,051	\$0
ODOC - Oregon State Correctional Institution	3324	Security Towers and Fences	1959	1,200	\$5,154,405	\$0
ODOC - Oregon State Correctional Institution	3330	Sitework and Hardscaping (Outside Fence)	1958	-	\$14,237,715	\$0
ODOC - Oregon State Correctional Institution	3333	Storage Buildings (5)	1959	12,400	\$2,203,359	\$0
ODOC - Oregon State Correctional Institution	3308	Upper Pond Pump House and Sewer Lift Station	1958	409	\$2,390,476	\$0
ODOC - Oregon State Correctional Institution	3317	Utility Tunnels	1959	18,224	\$6,874,568	\$0
ODOC - Oregon State Correctional Institution	3335	Warehouse	1958	12,330	\$3,985,187	\$0

ODOC - Oregon State Penitentiary	4899 (3) Generators	2012	840	\$2,045,413	\$0
ODOC - Oregon State Penitentiary	4881 Administration	1939	17,832	\$12,020,955	\$0
ODOC - Oregon State Penitentiary	4887 Boiler House	1956	7,108	\$6,752,553	\$0
ODOC - Oregon State Penitentiary	4912 Cell Block A	1954	20,166	\$15,886,634	\$0
ODOC - Oregon State Penitentiary	4903 Cell Block C	1933	40,956	\$32,264,851	\$0
ODOC - Oregon State Penitentiary	4930 Cell Block D	1950	60,690	\$47,811,159	\$0
ODOC - Oregon State Penitentiary	4895 Cell Block E	1951	60,690	\$47,811,159	\$0
ODOC - Oregon State Penitentiary	4879 Disciplinary Segregation Unit (DSU)	0	18,720	\$14,747,485	\$0
ODOC - Oregon State Penitentiary	4923 Dormitory / I Dorm	1929	14,068	\$9,062,719	\$0
ODOC - Oregon State Penitentiary	4906 Food Services & Infirmary Bldg	1941	58,200	\$42,015,151	\$0
ODOC - Oregon State Penitentiary	4880 Intermediate Bldg	1954	47,931	\$30,472,813	\$0
ODOC - Oregon State Penitentiary	4927 Laundry & Furniture Factory	1952	53,099	\$19,071,638	\$0
ODOC - Oregon State Penitentiary	4900 Metal Shop	0	20,699	\$7,016,129	\$0
ODOC - Oregon State Penitentiary	4909 Motor Pool	1964	18,855	\$10,622,495	\$0
ODOC - Oregon State Penitentiary	4907 OCE Industries Warehouse and Storage	0	15,680	\$4,162,853	\$0
ODOC - Oregon State Penitentiary	4911 OCE Sheet Shake/Record Storage	1966	18,145	\$11,044,010	\$0
ODOC - Oregon State Penitentiary	4891 Physical Plant / Auto Shop & Training	0	37,100	\$13,049,452	\$0
ODOC - Oregon State Penitentiary	4904 Recreation Field House	1970	24,420	\$7,683,199	\$0
ODOC - Oregon State Penitentiary	4916 Residence 2 and 3 with Garage	1938	11,276	\$1,605,741	\$0
ODOC - Oregon State Penitentiary	4901 Security Towers and Walls	1950	23,280	\$11,695,637	\$0
ODOC - Oregon State Penitentiary	4931 Sitework and Hardscaping (Inside the Fence)	1866	-	\$6,084,674	\$0
ODOC - Oregon State Penitentiary	4890 Sitework and Hardscaping (Outside the Fence)	1851	-	\$11,401,981	\$0
ODOC - Oregon State Penitentiary	4921 Special Management Housing Unit	1991	52,182	\$41,108,616	\$0
ODOC - Oregon State Penitentiary	4917 Upholstery Shop - Furniture	0	16,004	\$5,877,609	\$0
ODOC - Oregon State Penitentiary	4928 Warehouse B Shed	1943	16,128	\$3,778,195	\$0
ODOC - Oregon State Penitentiary	4922 Warehouse Receiving 1 and 2	0	16,000	\$5,171,369	\$0
ODOC - Oregon State Penitentiary Minimum	1507 Dormitory Inmate	1980	2,400	\$2,059,007	\$0
ODOC - Oregon State Penitentiary Minimum	1508 Main Facility	1965	21,036	\$12,648,335	\$0
ODOC - Oregon State Penitentiary Minimum	1510 Multipurpose Program	1975	8,000	\$2,711,679	\$0
ODOC - Oregon State Penitentiary Minimum	1509 Site Systems - Landscaping - Hardscaping and Mi	1965	-	\$2,911,396	\$0
ODOC - Powder River Correctional Facility	5020 Administration and Support Building	1990	20,664	\$16,276,067	\$0
ODOC - Powder River Correctional Facility	5008 Multi-Purpose Building	2003	12,180	\$4,933,180	\$0
ODOC - Powder River Correctional Facility	5019 Physical Plant Building	2002	8,075	\$3,276,518	\$0
ODOC - Powder River Correctional Facility	5017 Sitework, Hardscaping, Minimum Fence, Basketba	1991	-	\$3,550,989	\$0
ODOC - Powder River Correctional Facility	5009 Unit 1, Labor Building	1990	14,896	\$6,033,222	\$0
ODOC - Powder River Correctional Facility	5014 Unit 2, Dorm Housing	2003	12,920	\$5,232,897	\$0
ODOC - Powder River Correctional Facility	5016 Unit 3, General Use Building	1990	14,896	\$6,033,222	\$0
ODOC - Santiam Correctional Institution	4740 Main Facility	1945	71,382	\$42,919,921	\$0
ODOC - Santiam Correctional Institution	4738 Maintenance Building	1980	9,000	\$4,666,784	\$0
ODOC - Santiam Correctional Institution	4739 Multi-Purpose Building	1929	7,200	\$2,440,510	\$0
ODOC - Santiam Correctional Institution	4746 Physical Plant Boiler System	1946	3,006	\$2,760,344	\$0
ODOC - Santiam Correctional Institution	4743 Site Systems - Landscaping - Hardscaping and Mi	0	-	\$6,144,957	\$0
ODOC - SFFC	5916 Administration	0	6,620	\$2,631,915	\$0
ODOC - SFFC	5935 Dining Facility	0	4,480	\$1,483,505	\$0
ODOC - SFFC	5943 New Dormitory	2003	4,350	\$1,411,422	\$0
ODOC - SFFC	5927 Vehicle Barn & Boot Repair	0	5,450	\$1,923,064	\$0
ODOC - SFFC	5938 Wood Shed	0	160	\$2,169,842	\$0
ODOC - Snake River Correctional Institution	3987 Administration	1992	21,000	\$9,841,138	\$0
ODOC - Snake River Correctional Institution	3963 Armory	1992	2,900	\$1,968,804	\$0

ODOC - Snake River Correctional Institution	3979	Central Medical/Hearings	1991	31,164	\$21,547,592	\$0
ODOC - Snake River Correctional Institution	3983	Central Plant	2001	10,967	\$7,289,902	\$0
ODOC - Snake River Correctional Institution	3989	Complex 1 - Housing Unit A	1992	32,000	\$21,681,292	\$0
ODOC - Snake River Correctional Institution	3984	Complex 1 - Housing Unit B	1992	32,000	\$21,681,292	\$0
ODOC - Snake River Correctional Institution	3991	Complex 1 - Housing Unit C	1992	32,000	\$21,733,154	\$0
ODOC - Snake River Correctional Institution	3969	Complex 1 General Services	1992	28,000	\$17,373,990	\$0
ODOC - Snake River Correctional Institution	3986	Complex 1 Industries	1992	51,200	\$16,815,547	\$0
ODOC - Snake River Correctional Institution	3975	Complex 2 - Housing Unit I and J	2001	26,811	\$42,889,140	\$0
ODOC - Snake River Correctional Institution	3982	Complex 2 - Housing/Gym	2001	124,060	\$84,344,424	\$0
ODOC - Snake River Correctional Institution	3992	Complex 3 - Housing I and J	1996	26,811	\$42,889,140	\$0
ODOC - Snake River Correctional Institution	3993	Complex 3 - Housing/Gym	0	124,060	\$84,344,424	\$0
ODOC - Snake River Correctional Institution	3970	DSU/IMU	2001	146,010	\$101,108,403	\$0
ODOC - Snake River Correctional Institution	3977	Food Services	1992	37,000	\$22,149,072	\$0
ODOC - Snake River Correctional Institution	3972	General Services Complex 2	1996	51,135	\$35,356,057	\$0
ODOC - Snake River Correctional Institution	3964	General Services Complex 3	2001	51,135	\$35,356,057	\$0
ODOC - Snake River Correctional Institution	3985	Housing Cluster D and E	1992	26,954	\$23,503,011	\$0
ODOC - Snake River Correctional Institution	3991	Industries Complex 2	1996	28,546	\$19,827,249	\$0
ODOC - Snake River Correctional Institution	3974	Industries Complex 3	1996	28,546	\$19,827,249	\$0
ODOC - Snake River Correctional Institution	3978	Main Tower, Sitemap and Hardscaping (Inside the	1992	-	\$21,373,517	\$0
ODOC - Snake River Correctional Institution	3973	Minimum Security Dormitory	1992	47,685	\$28,185,990	\$0
ODOC - Snake River Correctional Institution	3965	Pump Stations 1 and 2 and Water Tanks	1992	1,680	\$1,376,706	\$0
ODOC - Snake River Correctional Institution	3971	Sitemap and Hardscaping (Outside the Fence)	1992	-	\$14,285,026	\$0
ODOC - Snake River Correctional Institution	3966	Visitors Center	2001	29,453	\$20,881,535	\$0
ODOC - Snake River Correctional Institution	3994	Warehouse Building	1992	52,000	\$15,996,562	\$0
ODOC - Two Rivers Correctional Institution	3220	Administration	1998	26,012	\$16,684,158	\$0
ODOC - Two Rivers Correctional Institution	3210	Core Operations Building	2000	13,840	\$8,877,008	\$0
ODOC - Two Rivers Correctional Institution	3223	Gatehouse and Sally Port	2000	6,360	\$5,437,733	\$0
ODOC - Two Rivers Correctional Institution	3203	General Housing Units 1 to 6	1999	150,540	\$118,588,216	\$0
ODOC - Two Rivers Correctional Institution	3209	General Housing Units 7 to 8	1999	50,180	\$39,529,404	\$0
ODOC - Two Rivers Correctional Institution	3214	General Housing Units 9 to 14	1999	150,540	\$118,588,216	\$0
ODOC - Two Rivers Correctional Institution	3217	High Custody Unit	1999	46,510	\$36,638,355	\$0
ODOC - Two Rivers Correctional Institution	3218	Inmate Processing Building	1999	13,000	\$10,017,093	\$0
ODOC - Two Rivers Correctional Institution	3205	Laundry Transfer Building	1999	3,280	\$2,446,287	\$0
ODOC - Two Rivers Correctional Institution	3224	Medical Services	2000	21,000	\$18,307,910	\$0
ODOC - Two Rivers Correctional Institution	3222	Medium Security Fence and Security Gates	2000	158,809	\$9,708,082	\$0
ODOC - Two Rivers Correctional Institution	3202	Minimum Housing Unit	1999	17,965	\$15,170,505	\$0
ODOC - Two Rivers Correctional Institution	3211	OCE Warehouse	1999	10,400	\$2,436,336	\$0
ODOC - Two Rivers Correctional Institution	3206	Physical Plant Building and Warehouse	2000	36,458	\$23,877,329	\$0
ODOC - Two Rivers Correctional Institution	3208	Regional Transport	2000	7,800	\$2,328,858	\$0
ODOC - Two Rivers Correctional Institution	3225	Religious Services	2000	7,570	\$5,366,655	\$0
ODOC - Two Rivers Correctional Institution	3204	Sitemap and Hardscaping (Inside the Fence)	2000	-	\$2,885,912	\$0
ODOC - Two Rivers Correctional Institution	3216	Sitemap and Hardscaping (Outside the Fence)	2000	-	\$10,904,899	\$0
ODOC - Two Rivers Correctional Institution	3221	Substations, Solar Arrays and Propane Storage	2000	24,274	\$3,734,884	\$0
ODOC - Two Rivers Correctional Institution	3201	TRCI Food Service Building	2000	23,340	\$19,607,411	\$0
ODOC - Two Rivers Correctional Institution	3215	Warehouse	1999	16,000	\$5,171,369	\$0
ODOC - Two Rivers Correctional Institution	3212	Workforce Building	2000	92,220	\$43,298,680	\$0
ODOC - Warner Creek Correctional Facility	1058	35-Bldg A - Administration	2005	8,200	\$3,266,686	\$0
ODOC - Warner Creek Correctional Facility	1059	35-Bldg B - Operations	2005	32,274	\$14,953,881	\$0
ODOC - Warner Creek Correctional Facility	1061	35-Bldg C - Education/Medical	2005	15,447	\$6,698,634	\$0

ODOC - Warner Creek Correctional Facility	1055	35-Bldg E - Recreation Building	2005	5,067	\$2,108,606	\$0
ODOC - Warner Creek Correctional Facility	1064	35-Bldg F - Housing	2005	50,230	\$20,105,702	\$0
ODOC - Warner Creek Correctional Facility	1056	35-Bldg H - Workforce	2005	5,000	\$2,422,230	\$0
		Subtotal Over \$1M CRV		5,172,608	\$3,435,924,317	\$0

Definitions

		From the budget instructions, Priority Five projects are alterations or replacement of facilities solely to implement new or higher standards to accommodate new functions, significantly improve existing functionality as well as replacement of building components that typically last more than 50 years (such as the building structure or foundations). These standards include system and aesthetic upgrades which represent sensible improvements to the existing condition. These projects improve the overall usability and reduce long-term maintenance requirements. Given the significant nature of these projects, the work typically addresses deficiencies that do not conform to current codes, Original Construction Year
Priority Five: Modernization	1	
Construction Year	2	
Current Replacement Value	3	Assessment (FCA)

Facility Plan - Facilities Planning Narrative 107BF02
2025-27 Biennium

Agency Name Oregon Department of Corrections

<p>1. What are the key drivers for your agency's facility needs, and how do you measure space/facility demand?</p> <p>DOC's facility drivers are largely related to the age of existing structures, and the fact that the built capacity of its institutions have been exceeded through the use of emergency beds – 299 as of June 13, 2022. Historic growth has taxed infrastructure while DOC has received limited General Fund deferred maintenance and Capital Improvement budget for smaller capitalized projects. DOC's facilities operate year-round and around-the-clock, with a population that tests the resilience and serviceability of our buildings and systems. The recent Facility Condition Assessment completed in 2015-16 has identified \$420 million in project needs over the next ten years.</p>	<p>2. What are the key facility-related challenges over the next 10-years? (Please answer in order of priority)</p> <p>In 2020 DOC hired DLR Group to develop a 10-year Strategic Master Plan that would identify a path to prioritizing, reducing and eliminating the Capital Renewal and Deferred Maintenance backlog. DLR Group recognized that current funding efforts by the State to address deferred maintenance needs are insufficient and will not avert its rapid growth and that a significantly higher level of funding is needed to address and control deferred maintenance needs. They also reported that if left unresolved, the deferred maintenance needs will continue to grow and likely double every five years. DLR Group recommended targeting all action items through year 2023, in the amount of \$480 million, for near term funding. DOC does not have the workforce or capacity to accomplish this degree of work in one biennium so intends to request this funding be spread over 3 biennia (21-23, 23-25, and 25-27). Further compounding the situation is the added stressors of the pandemic and its affects on the supply chain which continue to be felt, as well as vendor/contractor availability and interest to bid for projects. Needs that used to be addressed in 3 months are still seeing completion in 6-18 months, depending upon complexity. DOC's first priority is to reduce this deferred maintenance and capital renewal backlog.</p>	<p>3. What do you need to meet these challenges?</p> <p>The agency needs Capital Improvement and Renewal funding reflective of the project needs identified in the recent Facility Condition Assessment, to include project funding to complete the recommended renovations and proactively manage any unforeseen failures due to the fragile condition of these critical systems. For 25-27, DOC is requesting a total of \$70 million in Capital Renewal needs.</p>
--	--	--

Facility Plan - Facility Summary Report 107BF16a
2025-27 Biennium

Agency Name

Oregon Department of Corrections

Table A: Owned Assets Over \$1M CRV

		FY 2022 DATA	
1	Total Number of Facilities Over \$1M	184	
	Current Replacement Value \$ (CRV)	3,789,935,632	4 FCA
2	Total Gross Square Feet (GSF)	5,400,364	
	Office/Administrative Usable Square Feet (USF)	4,203,383	5 80% % USF/GSF
3	Occupants Position Count (PC)	N/A	6 294
			7 12,150

Table B: Owned facilities under \$1M CRV

1	Number of Facilities Under \$1M CRV	135
	Total Gross Square Feet (GSF)	59,503,516
		227,756

Table C: Leased Facilities

8	Total Rented SF	86,758
	Total 2023-25 Biennial Lease Cost	\$2,632,702
9	Additional 2023-25 Costs for Lease Properties (O&M)	\$378,923
2	Office/Administrative Usable Square Feet (USF)	86,758
3	Occupants Position Count (PC)	341

Estimate/Actual / Office/Admin USF/PC 5 80% % USF/GSF 6

Definitions

1	CRV	Current Replacement Value Reported to Risk Management or Calculated Replacement Value Reported Conditions Assessment (FCA)
2	USF	Usable Square Feet per BOMA definition for office/administrative uses. Area of a floor occupiable by a tenant furniture are normally housed plus building amenity areas that are convertible to occupant area and not rec operations of a building. If not known, estimate the percentage.
3	Occupant Position Count (PC)	Total Legislatively Approved Budget (LAB) Position Count within the buildings or leases as applicable.
4	Source	Enter Source of CRV as "Risk" or "FCA"
5	Estimate/Actual	Use actual USF % of USF to GSF, if available. If not known, estimate the percentage.
6	Office/Administrative USF/PC	Divide your USF by your position count. If office/admin space is a less than 10% of your space use, fill in N Measure".
7	Agency Measure	If not using USF/PC, insert Agency Measure as defined in 107BF02 question #1.

RSF	8	Rentable SF per BOMA definition. The total usable area plus a pro-rated allocation of the floor and building building.
O&M	9	Total Operations and Maintenance Costs for facilities including all maintenance, utilities and janitorial

Facility Plan - Facility O&M/DM Report 107B16b
2025-27 Biennium

Agency Name

Oregon Department of Corrections

Facilities Operations and Maintenance (O&M) Budget excluding Capital Improvements and Deferred Maintenance

Personal Services (PS) Operations and Maintenance
Services and Supplies (S&S) Operations and Maintenance
Utilities not included in PS and S&S above
Total O&M
O&M \$/SF

1	2021-23 Actual	2023-25 LAB	2025-27 Budgeted	2027-29 Budgeted
	\$52,056,480.00	\$58,089,436.00	\$65,154,917	\$71,670,409
	\$16,825,997.00	\$12,653,148.00	\$13,593,926	\$14,178,465
	\$33,252,285.00	\$38,036,818.00	\$42,899,561	\$44,744,242
	\$102,134,762.00	\$108,779,402.00	\$121,648,404	\$130,593,116
	18.91	20.14	22.53	24.18

Total O&M SF

5,400.364 Include only the SF for which your agency provides O&M funding.

O&M Estimated Fund Split Percentage %

2	General Fund	Lottery Fund	Other Funds	Federal Funds
	100%			

Deferred Maintenance Funding In Current Budget Model

Total Short and Long Term Deferred Maintenance Plan for Facilities

Priorities 1-3 - Currently, Potentially and Not Yet Critical
Priority 4 - Seismic & Natural Hazard
Priority 5 - Modernization

Total Priority Need
Facility Condition Index (Priority 1-3 Needs/CRV)

3	Current Costs 2024	Ten Year Projection	2025-27 Budgeted (non POP)	2027-29 Projected SB 1067 (2% CRV min.)
4,5,6	\$397,890,708	\$720,069,494	\$62,208,398	\$53,664,157
7	\$201	\$201		
8				
9	10.900%	19.600%	8.857%	17.584%

SB 1067 G
If your all
(minus DM

Assets CRV

\$3,789,935,632	Current Replacement Value Reported to Risk or Calculated Replacement Value Reported from Facility Conditions Assessment (FCA)
-----------------	---

Process/Software for routine maintenance (O&M)
Process/Software for deferred maintenance/renewal
Process for funding facilities maintenance

Benchmark CMMS Software	Provide narrative
iPlan	Provide narrative
POPs, LAB	Provide narrative

From iPlan FCA

Definitions

	The Facilities Operations and Maintenance budget includes costs to operate and maintain facilities and keep them in repair including utilities, janitorial and maintenance costs. Maintenance costs are categorized as external building (roof, siding, windows, etc.); interior systems (electrical, mechanical, interior walls, doors, etc.); roads and ground (groundskeeper, parking lots, sidewalks, etc.) and centrally operated systems (electrical, mechanical, etc.). Agencies with significant facilities may include support staff if directly associated with facilities maintenance activities. Do not include other overhead costs such as accounting, central government charges, etc.
Facilities Operations and Maintenance Budget	
O&M Estimated Fund Split Percentage %	Show the fund split by percentage of fund source allocated to facility O&M for your agency

<p>Total Short and Long Term Maintenance and Deferred Maintenance Plan for Facilities Value Over \$1M</p>	<p>3</p>	<p>All Maintenance excluding routine O&M costs. 25-27 and 27-29 auto-populates with 2% of the sum of your agency portfolio's CRV. Written to deliver on SB 1067: SECTION 9. (1) Each biennium, the Governor shall propose as part of the Governor's recommended budget an amount for deferred maintenance and capital improvements on existing state-owned buildings and infrastructure that is equivalent to at least two percent of the current replacement value of the state-owned buildings and infrastructure.</p>
<p>Priority One: Currently Critical</p>	<p>4</p>	<p>From the Budget Instruction: Priority One projects are conditions that require immediate action in order to address code and accessibility violations that affect life safety. Building envelope issues (roof, sides, windows and doors) that pose immediate safety concerns should be included in this category.</p>
<p>Priority Two: Potentially Critical</p>	<p>5</p>	<p>From the Budget Instruction: Priority Two projects are to be undertaken in the near future to maintain the integrity of the facility and accommodate current agency program requirements. Included are systems that are functioning improperly or at limited capacity, and if not addressed, will cause additional system deterioration and added repair costs. Also included are significant building envelope issues (roof, sides, windows and doors) that, if not addressed, will cause additional system deterioration and added repair costs.</p>
<p>Priority Three: Necessary - Not yet Critical</p>	<p>6</p>	<p>From the Budget Instructions: Priority Three projects could be undertaken in the near to mid-term future to maintain the integrity of a building and to address building systems, building components and site work that have reached or exceeded their useful life based on industry standards, but are still functioning in some capacity. These projects may require attention currently to avoid deterioration, potential downtime and consequently higher costs if corrective action is deferred.</p>
<p>Priority Four: Seismic and Natural Hazard Remediation</p>	<p>7</p>	<p>From the Budget Instructions: Priority Four projects improve seismic performance of buildings constructed prior to 1995 building code changes to protect occupants, minimize building damage and speed recovery after a major earthquake. Projects also include those that mitigate significant flood hazards.</p>
<p>Priority Five: Modernization</p>	<p>8</p>	<p>From the Budget Instructions: Priority Five projects are alterations or replacement of facilities solely to implement new or higher standards to accommodate new functions, significantly improve existing functionality as well as replacement of building components that typically last more than 50 years (such as the building structure or foundations). These standards include system and aesthetic upgrades which represent sensible improvements to the existing condition. These projects improve the overall usability and reduce long-term maintenance requirements. Given the significant nature of these projects, the work typically addresses deficiencies that do not conform to current codes, but are 'grandfathered' in their existing condition to the extent feasible.</p>
<p>Facility Condition Index</p>	<p>9</p>	<p>A calculated measure of facility condition relative to its current replacement value (expressed as a percentage)</p>

Major Construction/Acquisition Project Narrative

Note: Complete a separate form for each project

Agency:	Department of Corrections	Priority (Agency #):	Schedule
Project Name:	Capital Renewal	Cost Estimate \$ 70,000,000	Est. Completion Monday, March 1, 2027
Address/Location:	Salem, Oregon	Start Date 7/1/2024	Saturday, March 30, 2030
		# Stories	Land Use/Zoning Satisfied
			Y
			N

Funding Source(s): Show the distribution of dollars by funding source for the full project cost.	General Fund	Lottery	Other	Federal
		\$	70,000,000	

Description of Agency Business/Master Plan and Project Purpose/Problem to be Corrected
 DAS entered a contract with the consultant Faithful and Gould to conduct a statewide Facility Condition Assessment of all state-owned facilities. This assessment revealed that DOC had significant Capital Renewal and Deferred Maintenance needs. The assessment revealed that DOC had a need (through 2018) of \$208 million in both Capital Renewal and Deferred Maintenance at facilities across the state. DOC has made significant progress toward reducing its backlog of action items.

In 2020 DOC hired DLR Group to develop a 10-year Strategic Master Plan that would identify a path to prioritizing, reducing, and eliminating the Capital Renewal and Deferred Maintenance backlog. DLR Group recognized that current funding efforts by the State to address deferred maintenance needs are insufficient and will not avert its rapid growth and that a significantly higher level of funding is needed to address and control deferred maintenance needs. They also reported that if left unresolved, the deferred maintenance needs will continue to grow and likely double every five years.

A full Facility Condition Assessment will be completed in 2024 which will properly identify and prioritize deferred maintenance needs. An additional assessment of all ODOC HVAC systems will be completed in 2024, and dedicated funding is sought to begin to address the repair and replacement of items which will be contained in that report. DOC does not have the workforce or capacity to accomplish this degree of work in one biennium so intends to request this funding be spread over the next several biennia.

Project Scope and Alternatives Considered

The resources requested specific to this request are \$70 million other funding for the following Capital Renewal needs: building elements, electrical systems, hardscaping, HVAC, plumbing, roofs, and communication and security systems. The maintenance budgets for DOC facilities are generally insufficient to address the deterioration associated with 24-hour, 7-day per week institutions and related facilities that range from 10 years to 150 years in age. The various types of construction materials and systems used in older facilities compound the challenge of preserving the useful life of these assets. DOC is requesting \$70m for Capital Renewal projects to address items in six categories noted on the Faithful & Gould Facility Condition Assessment. The specific list by institution is in the process of being finalized, as the data was most recently updated and made available by DAS to the DOC.

ESTIMATED PROJECT COST

	\$	% Project Cost	\$/GSF
1 Building Cost Estimate			
2 Site Cost Estimate (20 Ft beyond building footprint)	\$ -	0%	\$ -
3 TOTAL DIRECT CONSTRUCTION COSTS	\$ -	0%	\$ -

INDIRECT CONSTRUCTION COSTS

- 4 Owner Equipment / Furnishings / Special Systems
- 5 Construction Related Permits & Fees
- 6 Other Indirect Construction Costs Including 1% Art, 1.5% Renewable Energy and other state or unique regulatory requirements not in hard costs
- 7 Architectural, Engineering Consultants
- 8 Other Design and PM Costs

9 TOTAL INDIRECT COSTS

\$ - - 0% \$ -

10 OWNER'S PROJECT CONTINGENCY

insert %

TOTAL PROJECT COST

\$ - - 0% \$ -

Project Image/Illustration (optional)

Facility Plan - 10 Year Space Needs Summary Report
2025-27 Biennium

Agency Name Oregon Department of Corrections

Note: List each project/lease or disposal separately.
Proposed New Construction or Acquisition - Complete for 5 Biennia

Biennium	Agency Priority	Concept/Project Name	Description	GSF	Position Count ¹	General Fund	Other Funds	Lotter Fund
2025-27								
2027-29								
2029-31								
2031-33								
2033-25								

Proposed Lease Changes over 10,000 RSF - Complete for 3 Biennia

Biennium	Location	Description/Use	Term in Years	Total RSF ² +/- (added or eliminated)	USF ³	Position Count ¹	Biennia Rent/RS
				A	B	C	D

Proposed Lease Changes over 10,000 RSF - Complete for 3 Biennia

Biennium	Location	Description/Use	Term in Years	Total RSF ² +/- (added or eliminated)	USF ³	Position Count ¹	Biennia Rent/RS
				A	B	C	D

Planned Disposal of Owned Facility

Biennium	Facility Name	Description

Definitions

Occupant Position Count (PC)	1	Estimated Position Count assigned to (home location) each building or lease as applicable
------------------------------	---	---

RSF	2	Rentable SF per BOMA definition. The total usable area plus a pro-rated allocation of the floor and building common areas within a building.
USF	3	Usable Square Feet per BOMA definition for office/administrative uses. Area of a floor occupiable by a tenant where personnel or furniture are normally housed plus building area convertible to occupant area and not required by code or for the operations of a building. If not known, estimate the percentage.
O&M	4	Total Operations and Maintenance Costs for facilities including all maintenance, utilities and janitorial