



Oregon

Tina Kotek, Governor

Department of Administrative Services
Enterprise Asset Management | Administration Office
1225 Ferry Street SE, U100
Salem, OR 97301-4290
PHONE: 503-378-4092
FAX: 503-373-7210

MEMORANDUM

To: Randy Gengler, Facilities Manager, Oregon Department of Transportation (ODOT)
From: Bill Foster, Chair, Capital Planning Advisory Board (CPAB/Board)
Date: August 20, 2024
Subject: ODOT's 2025-27 Agency Facilities Plan Acceptance

Randy,

The Capital Projects Advisory Board (CPAB/Board) has reviewed ODOT's 2025-27 facilities plan in accordance with ORS 276.227. Following your Board presentation on August 9th, the Board has **accepted** your plan with the following comments:

- *CPAB appreciates your thorough presentation and the agency's effort to stretch limited funding given its current budgetary challenges.*

Sincerely,

Bill Foster, Chair

Capital Projects Advisory Board (CPAB)



Oregon

Tina Kotek, Governor

Department of Transportation

Facilities Services

885 Airport Rd SE, Bldg X

Salem, Oregon, 97301

Phone: (503) 986-5777

Fax: (503) 986-5780

July 31, 2024

To: Capital Projects Advisory Board
From: Randy Gengler, Facilities Services Branch Manager
Subject: Plan Submission Cover Memo

Agency Accomplishments:

ODOT has made significant improvements in reducing leased office space and moving staff into ODOT owned space. We have ended 7 leases totaling 168,000 SF and saving the agency \$5.5 million in the 2023-25 biennium. ODOT has made the decision to end another lease by September 2025 of 38,000 SF saving another \$750,000 in 2027-29. ODOT is at 56% in meeting the DAS goal in reducing office space by 30% by 2027.

ODOT is currently analyzing our largest 40 office buildings to determine what available space can be created in hopes of leasing that out to other state agencies. ODOT worked with DAS Leasing to create a small office lease policy and lease template, and DAS delegated authority to ODOT to use these in leasing space directly with other agencies. Our goal is to free up the other 44% of the 30% DAS reduction goal, then work with DAS Leasing on filling that space.

ODOT Facilities has fully implemented the use of zLink for conducting our Facilities Condition Assessments and have "cleaned up" all our deficiency data by confirming the right deficiencies are listed, updating the urgency of action (priority) and updating the cost estimates. Because of this our total deficiency need has grown to \$500 million, representing an FCI of .40. Unfortunately, ODOT does not have the funding available to adequately address this need, but at least we have good data and know what our true need is.

Agency Challenge:

For several years ODOT has been forecasting a revenue shortfall. In 2021-23 we began reducing our spending, and in 2023-25 implemented a 10% budget reduction across the agency. Our major maintenance funding was reduced by 40% this biennium and our Capital Improvement funding will be reduced by 36% in 2025-27. Unless ODOT can increase our revenue or get additional funding from the legislature, we are looking at up to a 30% agency wide reduction in 2025-27 to compensate for a \$350 million shortfall.

Agency 2025-27 Plan:

ODOT has put a hold on all Capital Construction projects in 2025-27. We use Capital Improvement funds for new structures and major improvements, and use our Major Maintenance for all standard maintenance and replacements. Due to our reductions in both MM and CI for 2025-27, ODOT has made the decision to not construct anything new in 2025-27 and spend all CI and MM funds on the highest priority building repairs. We have identified 47 roof projects; 57 HVAC projects, and 7 exterior envelop projects that are critically needed. Our desire is to continue replacing buildings that are obsolete, but with our reductions, that just isn't possible now.

Major Construction:

ODOT is not spending any Capital Construction funding in 2025-27. We are wrapping up three CC projects in 2023-25, and putting a hold on CC until 2027-29.



Oregon Department of Transportation

Presented by
ODOT Facilities Services Branch

2025-27 Agency Facility Plan

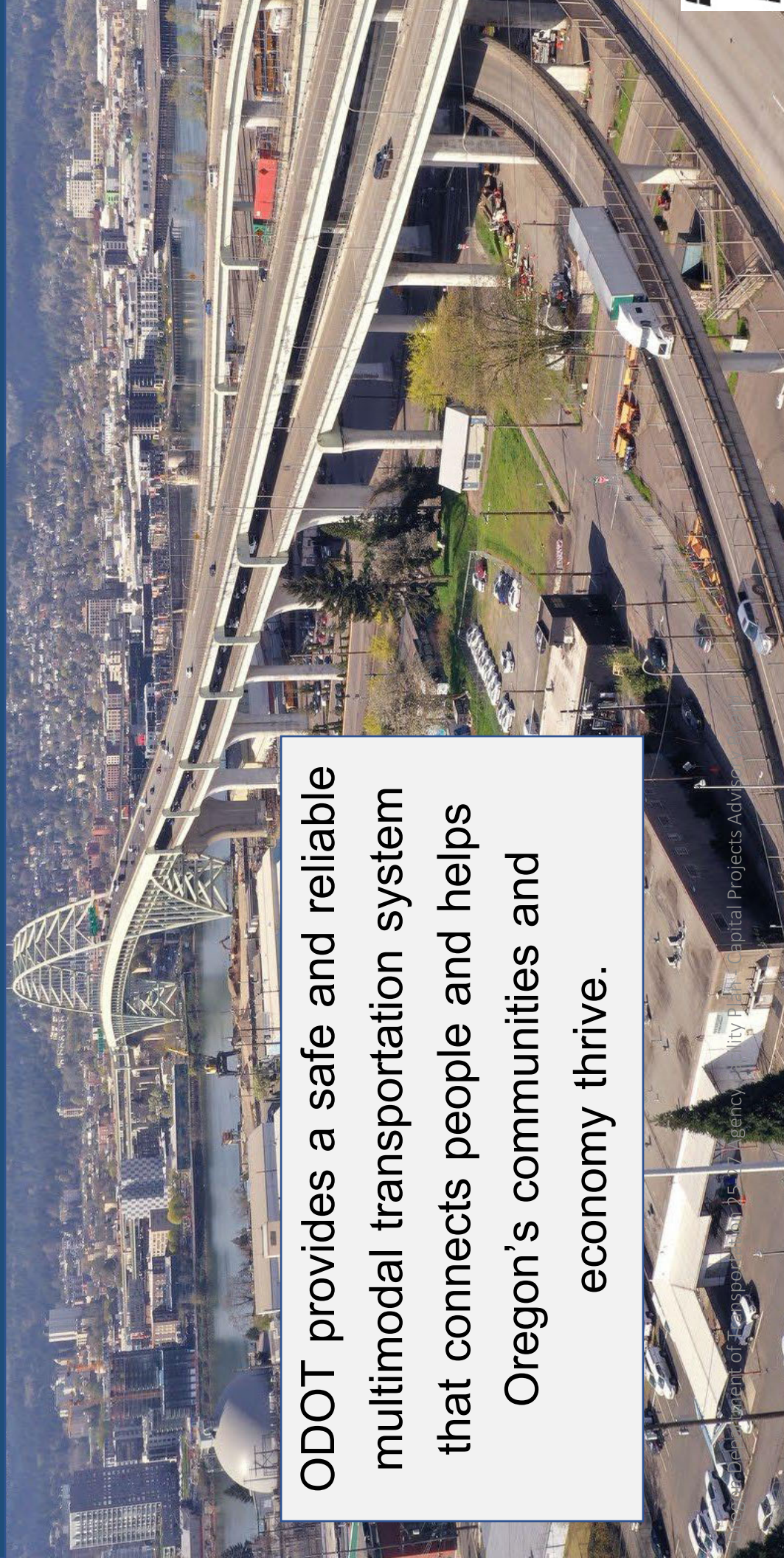
Capital Projects Advisory Board

August 9, 2024

Oregon Department of Transportation 25-27 Agency Facility
Plan - Capital Projects Advisory Board

Mission

ODOT provides a safe and reliable multimodal transportation system that connects people and helps Oregon's communities and economy thrive.



ODOT's Portfolio

- Total Facilities – Approximately 1,200*
- Total Gross Square Footage (GSF) – 3.4M
- Total Current Replacement Value (CRV) – \$1.2B**
- Total Major Facilities (over \$1M CRV)
 - Count – 371
 - GSF – 2.8M
 - CRV – \$1.0B

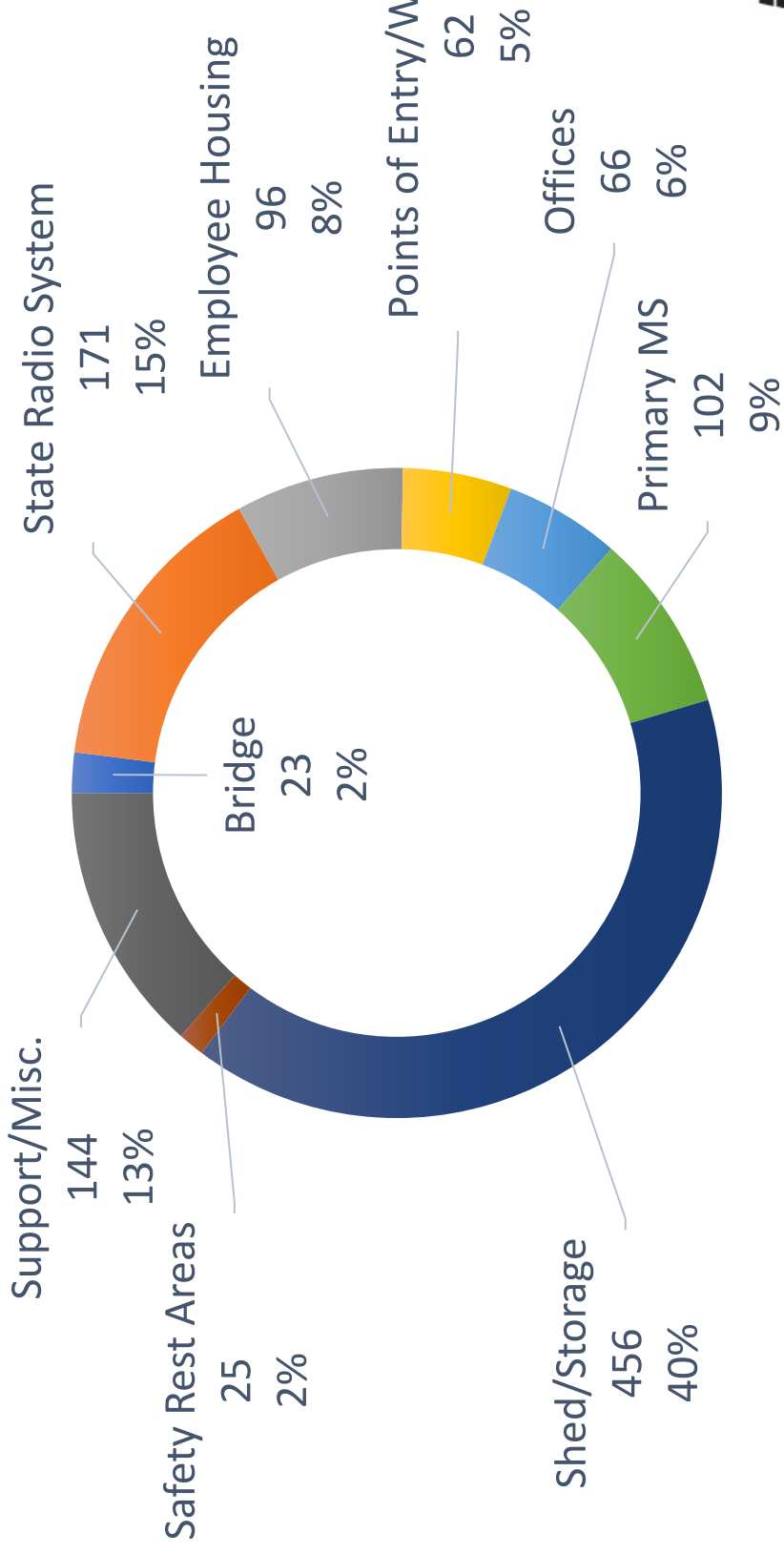
*Count is all ODOT owned buildings; includes Safety Rest Areas that we maintain

**Does not include CRV for grounds related assets

Oregon Department of Transportation 25-27 Agency Facility Plan - Capital Projects Advisory Board

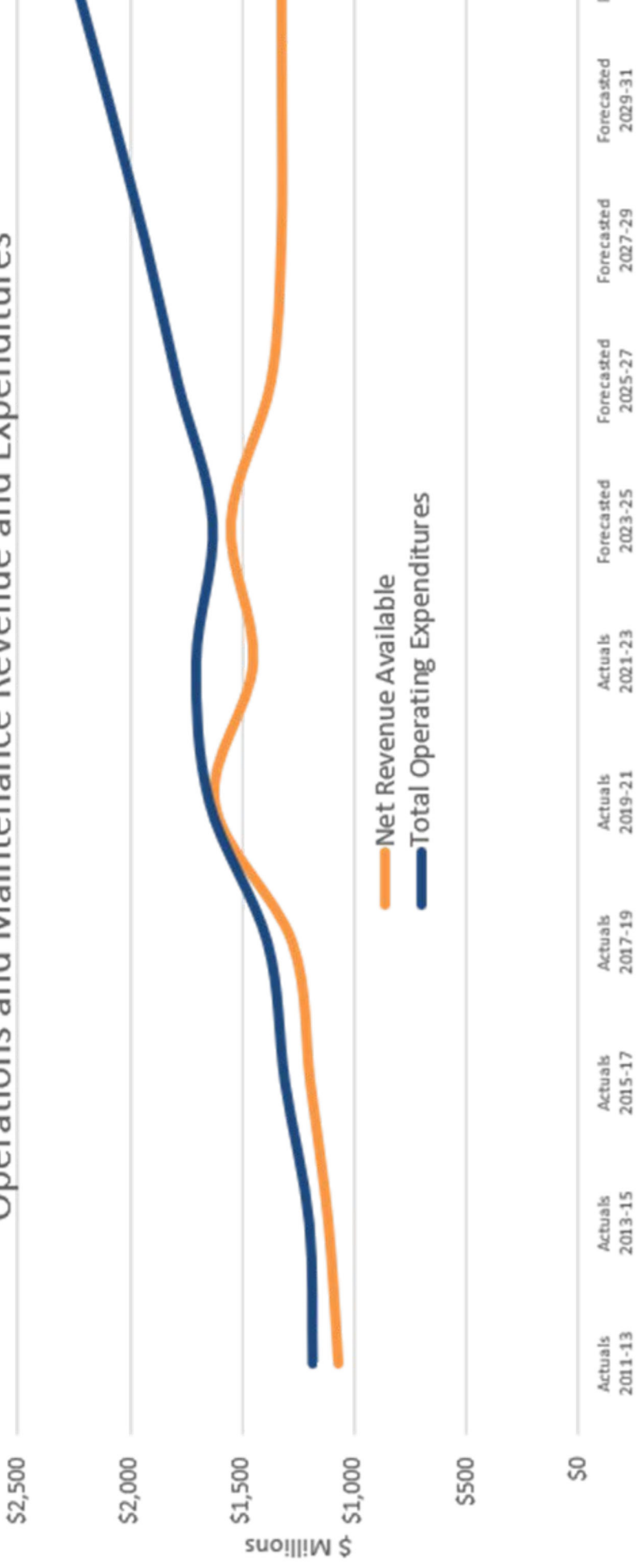
ODOT's Portfolio

ODOT's Portfolio By Building Type



Planning Factors Emergent Issues/Business Trends

Operations and Maintenance Revenue and Expenditures



ODOT's Funding

Funding Type	17-19 Expended	19-21 Expended	21-23 Expended	23-25 Budgeted
Major Maintenance (DM/CR)	\$9,932,746	\$7,298,922	\$4,482,763	\$2,700,000
ESB	\$3,636,322	\$3,101,345	\$4,858,277	\$1,415,140
Tenant Funded	\$4,533,957	\$3,360,208	\$4,514,207	\$1,370,312
Total DM Funding	\$18,103,025	\$13,760,475	\$13,855,247	\$5,485,452
Capital Improvement (Modernization)	\$8,781,294	\$7,452,055	\$7,827,953	\$7,574,561
Capital Construction (CC)	\$3,841,039	\$8,767,268	\$30,513,862	\$11,863,117
Total Modernization Funding	\$12,622,333	\$16,219,323	\$38,341,815	\$19,437,678

** 25-27 CI funds will be used for deferred maintenance, not modernization.

Planning Factors

Current/Future Demand

- 3,500 identified deficiencies in 719 owned buildings, totaling \$485 M
- Immediate Needs FCI = $\frac{\text{Current Priority Deferred Maintenance+Capital Renewal}}{\text{CRV}} = \frac{\$39 \text{ M}}{\$1.2 \text{ B}} = \mathbf{0.03}$
- Total FCI = $\frac{\text{Total Deferred Maintenance+Capital Renewal}}{\text{CRV}} = \frac{\$485 \text{ M}}{\$1.2 \text{ B}} = \mathbf{0.40}$
- Needed funding for improvements is 4.79 % of CRV, per year:
 - $4.79 \% \times \$1.2\text{B} = \frac{\$57 \text{ M}}{\text{year}} = \frac{\$114 \text{ M}}{\text{biennium}}$
 - As CRV increases with annual inflation, annual funding needs also increase
- Current funding is less than \$5.5 M for 23-25, which is only **0.45%** of CRV

Planning Factors

Strategic Opportunities

- ❖ Lease consolidations & independent leasing policy
 - 53% progress toward meeting the DAS 30% Office reduction goal
- ❖ Prioritize deferred maintenance to keep buildings operational
- ❖ Looking at bonding for master plan

Facility Strategies

Risk/Climate Change Mitigation

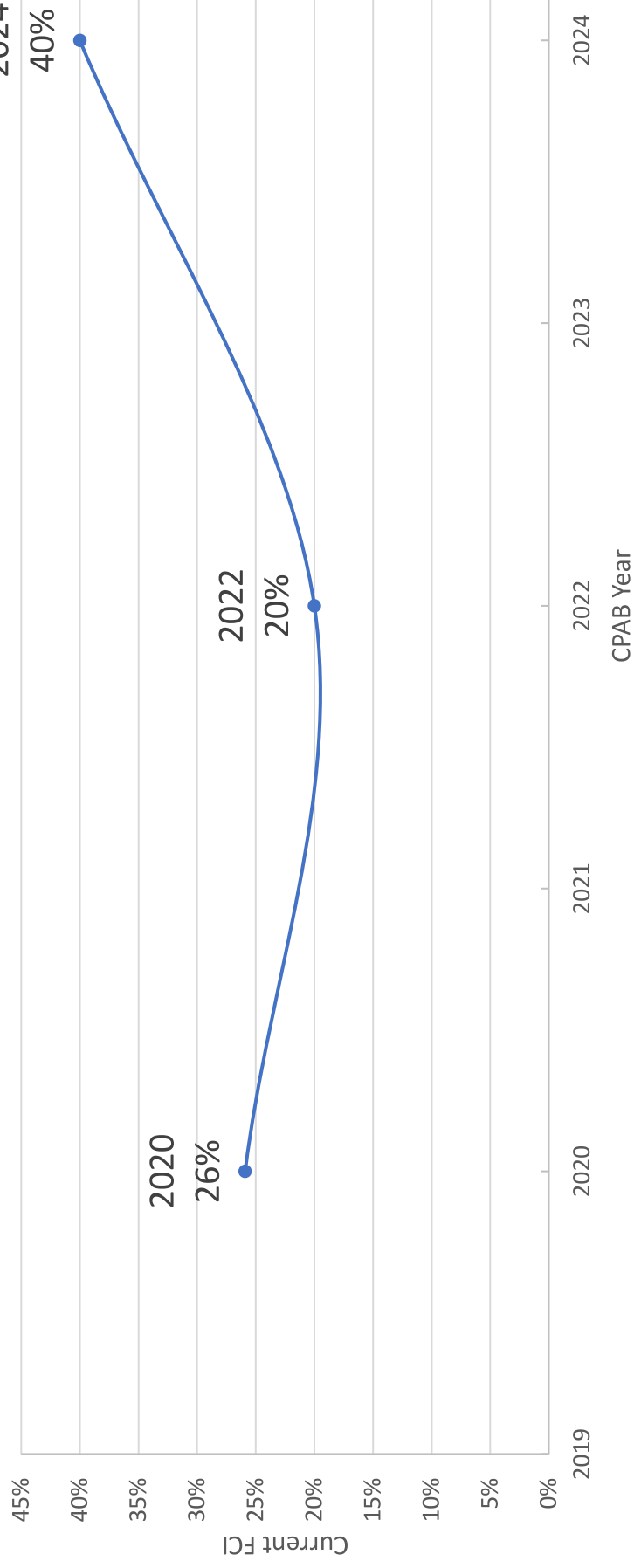
- ✓ Electric Vehicle Charger Installation
- ✓ Meeting/Exceeding SEED
- ✓ Fuel Switching, where applicable
- ✓ Enrolling in Community Solar
- ✓ Continuation of Strategic Energy Management
- ✓ Use of drought tolerant, low-maintenance, native plants in landscaping

Major Project



Facility Condition

Portfolio Facility Condition Index (FCI)

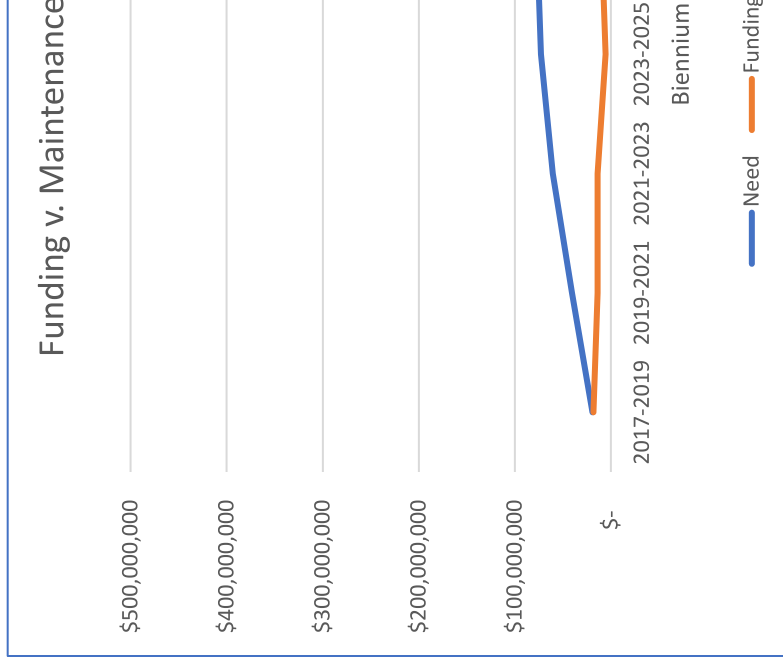


Facility Plan Summary

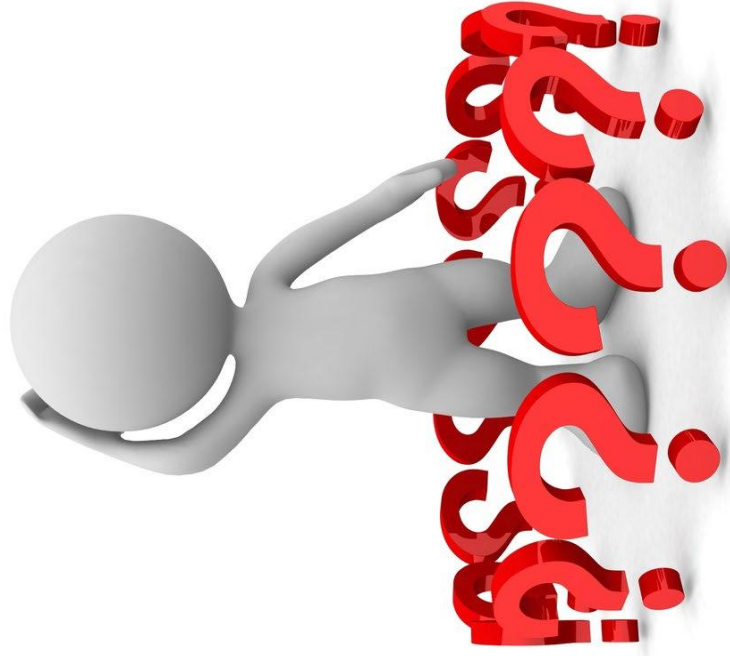
AGENCY PLAN SUMMARY	DM/LIFE SAFETY (PRIORITY 1)	CAPITAL RENEWAL (PRIORITY 2)	CAPITAL RENEWAL (PRIORITY 3)	SEISMIC/RISK (PRIORITY 4)	MODERNIZATION (NET PRIORITY 5)
DM/CR	\$17,382,574	\$16,124,516	\$5,515,354	\$0	\$0
Resilience/Risk	\$0	\$0	\$0	\$15,300	\$0
Modernization	\$0	\$0	\$0	\$0	\$0
Total	\$17,382,574	\$16,124,516	\$5,515,354	\$15,300	\$0

Summary

- 1,200 buildings on 450 sites
- \$500M in Deferred Maint
- Reduced spending
- Hold on all new buildings
- Prioritizing roofs, HVAC and building envelopes



Questions?



Priority Four: Seismic and Natural Hazard Remediation	7	From the Budget Instructions: Priority Four projects improve seismic performance of buildings constructed prior to 1995 building code changes to protect occupants, minimize building damage and speed recovery after a major earthquake. Projects also include those that mitigate significant flood hazards.
Facility Condition Index	8	A calculated measure of facility condition relative to its current replacement value (expressed as a percentage).

Facility Plan - Maintenance Priority 1-4
2025-27 Biennium

Agency Name

Oregon Department of Transportation

10 Year Maintenance Priority 1-4 for Owned Assets Over \$1M CRV

Category	Agency	Building ID	Building Name	iPlan Data (Unit Cost Costs)											Agency Input											
				D	E	F	G	H	I	J	K	L	M	N		O										
				Year	Area	Count	Unit Cost	Priority 1 - Critical (Mill)	Priority 2 - High (Mill)	Priority 3 - Moderate (Mill)	Priority 4 - Low (Mill)	Other (Mill)	Net Present Value (Mill)	Current CRV (Mill)	CRV in 10 Years (Mill)	CRV in 20 Years (Mill)	CRV in 30 Years (Mill)	CRV in 40 Years (Mill)	CRV in 50 Years (Mill)	CRV in 60 Years (Mill)	CRV in 70 Years (Mill)	CRV in 80 Years (Mill)	CRV in 90 Years (Mill)	CRV in 100 Years (Mill)		
ODOT Region 02 - F42450 - Transportation HOV Bins Grounds		F4245001	Transportation HOV Bins	01 Jan 1981	149,282	352,024.24	\$	\$	\$	\$	\$	\$	\$150,000	\$	2.1%	\$	\$1,000,000	\$1,000,000	\$	\$	\$	\$	\$	\$	\$	
ODOT Region 02 - F42450 - Transportation HOV Bins Grounds		F4245002	Transportation HOV Bins	10 Jun 1982	126,543	\$48,806.04	\$	\$	\$	\$	\$	\$	\$	\$	0.1%	\$	\$	\$	\$	\$	\$	\$	\$	\$	\$	
ODOT Region 01 - F42699 - Matthew J. Gault Regional HOV Bins		F4269901	Matthew J. Gault Regional HOV Bins	01 Jan 1981	90,177	\$28,444.748	\$	\$18,000	\$19,223	\$	\$	\$	\$18,000	\$19,223	1.4%	\$	\$18,000	\$19,223	\$	\$	\$	\$	\$	\$	\$	\$
ODOT Region 01 - F43027 - East Salem Complex Grounds 3		F4302701	East Salem Complex Grounds 3	30 Jan 1985	39,589	\$12,869.69	\$300,000	\$	\$	\$	\$	\$	\$31,564	\$23,337	0.0%	\$	\$	\$	\$	\$	\$	\$	\$	\$	\$	
ODOT Region 05 - F43029 - Meacham MS New Bldg		F4302901	Meacham MS New Bldg	09 Jun 2023	28,748	\$1,558,596	\$	\$	\$	\$	\$	\$	\$	\$	0.0%	\$	\$	\$	\$	\$	\$	\$	\$	\$	\$	
ODOT Region 01 - F43100 - Region 3 HOV Grounds		F4310001	Region 3 HOV Grounds	01 May 1983	27,878	\$1,420,497	\$278,188	\$68,288	\$58,348	\$	\$	\$	\$	\$	\$	0.0%	\$	\$1,414,642	\$908,288	\$	\$	\$	\$	\$	\$	
ODOT Region 02 - F43201 - Mt Creek Office Grounds		F4320101	Mt Creek Office Grounds	30 Jun 1972	46,988	\$14,020,000	\$700,000	\$86,973	\$	\$	\$	\$	\$	\$	0.0%	\$	\$14,076,173	\$89,973	\$	\$	\$	\$	\$	\$	\$	
ODOT Region 01 - F43177 - Interstate Bridges Grounds		F4317701	Interstate Bridge Bldg #1	14 Feb 1977	1,260	\$1,104,000	\$	\$	\$	\$	\$	\$	\$	\$	0.0%	\$	\$	\$	\$	\$	\$	\$	\$	\$	\$	
ODOT Region 01 - F43180 - La Grande Bridge Grounds		F4318001	La Grande Bridge	30 Jan 1959	51,144	\$1,268,071	\$	\$	\$	\$	\$	\$	\$	\$	0.0%	\$	\$37,000	\$1,172,071	\$34,728	\$	\$	\$	\$	\$	\$	
ODOT Region 02 - F43218 - Salem Materials Lab Grounds		F4321801	Salem Materials Lab	30 Jun 1987	42,580	\$1,424,800.00	\$	\$	\$	\$	\$	\$	\$	\$	0.0%	\$	\$1,347,811	\$77,989	\$	\$	\$	\$	\$	\$	\$	
ODOT Region 05 - F43111 - Region 5 HOV Grounds		F4311101	Region 5 HOV Grounds	30 Jan 1985	49,428	\$1,144,920	\$	\$	\$	\$	\$	\$	\$	\$	0.0%	\$	\$	\$	\$	\$	\$	\$	\$	\$	\$	
ODOT Region 01 - F43141 - Salem City, Parkhurst		F4314101	Salem City, Parkhurst	30 Jan 1985	39,058	\$1,626,764	\$	\$	\$	\$	\$	\$	\$	\$	0.0%	\$	\$	\$	\$	\$	\$	\$	\$	\$	\$	
ODOT Region 01 - F43212 - East Salem Complex Grounds 2		F4321201	East Salem Complex Grounds 2	01 Jan 1964	37,860	\$8,242,460	\$720	\$	\$	\$	\$	\$	\$	\$	0.0%	\$	\$	\$	\$	\$	\$	\$	\$	\$	\$	
ODOT Region 01 - F43177 - Interstate Bridges Grounds		F4317702	Interstate Bridge Bldg #2	14 Feb 1977	821	\$8,028,000	\$	\$	\$	\$	\$	\$	\$	\$	0.0%	\$	\$	\$	\$	\$	\$	\$	\$	\$	\$	
ODOT Region 01 - F42619 - Barlow School Office Bldg		F4261901	Barlow School Office Bldg	01 Jan 1978	22,280	\$4,107,071	\$	\$	\$	\$	\$	\$	\$	\$	0.0%	\$	\$	\$	\$	\$	\$	\$	\$	\$	\$	
ODOT Region 01 - F43177 - Interstate Bridges Grounds		F4317703	Interstate Bridge Bldg #3	14 Feb 1977	795	\$8,268,000	\$	\$	\$	\$	\$	\$	\$	\$	0.0%	\$	\$	\$	\$	\$	\$	\$	\$	\$	\$	
ODOT Region 02 - F42484 - New Salem Complex Grounds 1		F4248401	New Salem Complex Grounds 1	01 Jan 1982	21,859	\$9,206,094	\$	\$	\$	\$	\$	\$	\$	\$	0.0%	\$	\$	\$	\$	\$	\$	\$	\$	\$	\$	
ODOT Region 04 - F43015 - Region 4 HOV MS Grounds		F4301501	Region 4 HOV MS Grounds	30 Nov 2012	21,762	\$9,160,120	\$	\$	\$	\$	\$	\$	\$	\$	0.0%	\$	\$	\$	\$	\$	\$	\$	\$	\$	\$	
ODOT Region 01 - F43099 - Bend Equipment Shop Grounds		F4309901	Bend Equipment Shop (Truck Shop) Bldg 2	01 Jan 1985	29,159	\$1,592,340	\$	\$	\$	\$	\$	\$	\$	\$	0.0%	\$	\$	\$	\$	\$	\$	\$	\$	\$	\$	
ODOT Region 01 - F43099 - Bend Equipment Shop Grounds		F4309902	Bend Equipment Shop (Truck Shop) Bldg 2	01 Jan 1985	473	\$	\$	\$	\$	\$	\$	\$	\$	\$	0.0%	\$	\$	\$	\$	\$	\$	\$	\$	\$	\$	
ODOT Region 05 - F43107 - Baker City MS Shop Bldg		F4310701	Baker City MS Shop Bldg	01 Nov 2020	22,151	\$8,887,753	\$	\$	\$	\$	\$	\$	\$	\$	0.0%	\$	\$	\$	\$	\$	\$	\$	\$	\$	\$	
ODOT Region 02 - F43043 - New Salem Complex Grounds 1		F4304301	New Salem Complex Grounds 1	01 Jan 1986	21,950	\$8,445,654	\$	\$	\$	\$	\$	\$	\$	\$	0.0%	\$	\$	\$	\$	\$	\$	\$	\$	\$	\$	
ODOT Region 04 - F43016 - Bend MS Grounds		F4301601	Bend Maintenance Shop Bldg #3	01 Feb 2000	21,900	\$8,032,465	\$	\$	\$	\$	\$	\$	\$	\$	0.0%	\$	\$	\$	\$	\$	\$	\$	\$	\$	\$	
ODOT Region 02 - F43212 - East Salem Complex Grounds 2 (Bldg F, X)		F4321202	East Salem Complex Grounds 2 (Bldg F, X)	01 Jan 1987	14,245	\$1,854,253	\$	\$	\$	\$	\$	\$	\$	\$	0.0%	\$	\$	\$	\$	\$	\$	\$	\$	\$	\$	
ODOT Region 04 - F43132 - Lakeview New MS Grounds		F4313201	Lakeview New MS Bldg	01 Dec 2000	19,000	\$1,772,348	\$	\$	\$	\$	\$	\$	\$	\$	0.0%	\$	\$	\$	\$	\$	\$	\$	\$	\$	\$	
ODOT Region 04 - F43121 - Lakeview New MS Bldg		F4312101	Lakeview New MS Bldg	01 Jan 1984	18,565	\$1,410,342	\$	\$	\$	\$	\$	\$	\$	\$	0.0%	\$	\$	\$	\$	\$	\$	\$	\$	\$	\$	
ODOT Region 02 - F43036 - New Young Bay Bridge Grounds		F4303601	New Young Bay Bridge	29 Aug 1984	18,168	\$1,372,800	\$	\$	\$	\$	\$	\$	\$	\$	0.0%	\$	\$	\$	\$	\$	\$	\$	\$	\$	\$	
ODOT Region 04 - F43132 - Lakeview New MS Grounds		F4313202	Lakeview New MS Bldg	01 Jan 1984	18,168	\$1,372,800	\$	\$	\$	\$	\$	\$	\$	\$	0.0%	\$	\$	\$	\$	\$	\$	\$	\$	\$	\$	
ODOT Region 02 - F43204 - Santiam JMS Grounds		F4320401	Santiam JMS Grounds	01 Jan 1985	11,888	\$1,502,282	\$	\$	\$	\$	\$	\$	\$	\$	0.0%	\$	\$	\$	\$	\$	\$	\$	\$	\$	\$	
ODOT Region 04 - F43016 - Bend MS Grounds		F4301602	Bend Maintenance Shop Bldg #4	01 Jan 1985	11,888	\$1,502,282	\$	\$	\$	\$	\$	\$	\$	\$	0.0%	\$	\$	\$	\$	\$	\$	\$	\$	\$	\$	
ODOT Region 05 - F43109 - La Grande MS Grounds		F4310901	La Grande MS Bldg	30 Jun 1992	12,864	\$1,252,376	\$	\$	\$	\$	\$	\$	\$	\$	0.0%	\$	\$	\$	\$	\$	\$	\$	\$	\$	\$	
ODOT Region 02 - F43076 - Coos Bay Bridge Grounds		F4307601	Coos Bay (Chadron) Bridge Bldg #2	01 Jan 1982	388	\$1,401,600	\$	\$	\$	\$	\$	\$	\$	\$	0.0%	\$	\$	\$	\$	\$	\$	\$	\$	\$	\$	
ODOT Region 01 - F43076 - Coos Bay Bridge Grounds		F4307602	Coos Bay (Chadron) Bridge Bldg #2	01 Jan 1982	388	\$1,401,600	\$	\$	\$	\$	\$	\$	\$	\$	0.0%	\$	\$	\$	\$	\$	\$	\$	\$	\$	\$	
ODOT Region 02 - F43217 - Albany MS Bldg		F4321701	Albany New MS Bldg	01 Jan 1988	18,338	\$1,410,348	\$	\$	\$	\$	\$	\$	\$	\$	0.0%	\$	\$	\$	\$	\$	\$	\$	\$	\$	\$	
ODOT Region 02 - F43202 - Santiam JMS Grounds		F4320201	Santiam JMS Grounds	01 Feb 2000	18,338	\$1,410,348	\$	\$	\$	\$	\$	\$	\$	\$	0.0%	\$	\$	\$	\$	\$	\$	\$	\$	\$	\$	
ODOT Region 05 - F43251 - Ontario MS New Grounds		F4325101	Ontario MS New Grounds	31 Dec 1999	14,500	\$1,031,818	\$	\$	\$	\$	\$	\$	\$	\$	0.0%	\$	\$	\$	\$	\$	\$	\$	\$	\$	\$	
ODOT Region 01 - F43246 - East Salem Complex Grounds 4		F4324601	East Salem Complex Grounds 4	01 Jan 1988	18,889	\$1,905,300	\$	\$	\$	\$	\$	\$	\$	\$	0.0%	\$	\$	\$	\$	\$	\$	\$	\$	\$	\$	
ODOT Region 02 - F43036 - New Young Bay Bridge Grounds		F4303602	New Young Bay Bridge	29 Aug 1984	18,168	\$1,372,800	\$	\$	\$	\$	\$	\$	\$	\$	0.0%	\$	\$	\$	\$	\$	\$	\$	\$	\$	\$	
ODOT Region 02 - F43036 - New Young Bay Bridge Grounds		F4303603	New Young Bay Bridge Bldg #3	29 Aug 1984	372	\$3,868,800	\$	\$	\$	\$	\$	\$	\$	\$	0.0%	\$	\$	\$	\$	\$	\$	\$	\$	\$	\$	
ODOT Region 01 - F43102 - Umpqua River Bridge Grounds		F4310201	Umpqua River Bridge	01 Jan 1988	367	\$1,818,800	\$	\$	\$	\$	\$	\$	\$	\$	0.0%	\$	\$	\$	\$	\$	\$	\$	\$	\$	\$	
ODOT Region 01 - F43099 - Bend Equipment Shop Grounds		F4309903	Bend Equipment Shop (Truck Shop) Bldg 2	01 Jan 1985	11,888	\$1,860,480	\$	\$	\$	\$	\$	\$	\$	\$	0.0%	\$	\$	\$	\$	\$	\$	\$	\$	\$	\$	
ODOT Region 02 - F43122 - Ona Beach MS Grounds		F4312201	Ona Beach MS Bldg	01 Jul 2001	4,452	\$1,542,600	\$	\$	\$	\$	\$	\$	\$	\$	0.0%	\$	\$	\$	\$	\$	\$	\$	\$	\$	\$	
ODOT Region 02 - F43055 - Cascade Locks MS Grounds		F4305501	Cascade Locks MS Bldg	01 Jan 1988	4,452	\$1,542,600	\$	\$	\$	\$	\$	\$	\$	\$	0.0%	\$	\$	\$	\$	\$	\$	\$	\$	\$	\$	
ODOT Region 02 - F43203 - Santiam Summit Stockade Grounds		F4320301	Santiam Summit Stockade	01 Jan 1988	12,900	\$1,501,211	\$	\$	\$	\$	\$	\$	\$	\$	0.0%	\$	\$	\$	\$	\$	\$	\$	\$	\$	\$	
ODOT Region 02 - F43200 - Onatama MS Grounds		F4320001	Onatama MS Bldg	01 Jan 2000	10,718	\$1,434,480	\$70,000	\$	\$	\$	\$	\$	\$	\$	0.0%	\$	\$	\$	\$	\$	\$	\$	\$	\$	\$	
ODOT Region 02 - F43055 - Cascade Locks MS Grounds		F4305502	Cascade Locks MS Bldg	30 Jan 1987	9,808	\$1,329,440	\$	\$	\$	\$	\$	\$	\$	\$	0.0%	\$	\$	\$	\$	\$	\$	\$	\$	\$	\$	
ODOT Region 04 - F43132 - The Dalles MS Grounds		F4313202	The Dalles MS Bldg	01 Jan 1982	8,400	\$1,209,849	\$	\$	\$	\$	\$	\$	\$	\$	0.0%	\$	\$	\$	\$	\$	\$	\$	\$	\$	\$	
ODOT Region 01 - F43091 - Salem MS Maintenance Shop		F4309101	Salem MS Maintenance Shop	13 Dec 2012	10,260	\$1,226,080	\$	\$	\$	\$	\$	\$	\$	\$	0.0%	\$	\$	\$	\$	\$	\$	\$	\$	\$	\$	
ODOT Region 01 - F43141 - Salem City, Parkhurst		F4314102	Salem City, Parkhurst	13 Dec 1992	10,260	\$1,226,080	\$	\$	\$	\$	\$	\$	\$	\$	0.0%	\$	\$	\$	\$	\$	\$	\$	\$	\$	\$	
ODOT Region 02 - F43121 - Ona Beach MS HOV Office		F4312101	Ona Beach MS HOV Office	01 Jul 2001	7,413	\$1,157,880	\$	\$	\$	\$	\$	\$	\$	\$	0.0%	\$	\$	\$	\$	\$	\$	\$	\$	\$	\$	
ODOT Region 01 - F43081 - Klamath Falls MS Grounds		F4308101	Klamath Falls MS Bldg	01 Jan 1988	7,413	\$1,157,880	\$	\$	\$	\$	\$	\$	\$	\$	0.0%	\$	\$	\$	\$	\$	\$	\$	\$	\$	\$	
ODOT Region 01 - F43081 - Klamath Falls MS Grounds		F4308102	Klamath Falls MS Bldg	01 Jan 1988	7,413	\$1,157,880	\$	\$	\$	\$	\$	\$	\$	\$	0.0%	\$	\$	\$	\$	\$						

DDOT Region ID	F430312 - Murray MS Equipment Storage	01 Nov 2007	4,648	\$1,136,120	\$0	\$0	\$2,816	\$12,816	\$12,816	0.2%	\$0	\$2,800
DDOT Region ID - F41411 - Lincoln MS Grounds	F414101	F411101 - Lincoln MS Bldg	01 Jan 1982	2,498	\$1,229,450	\$0	\$0	\$12,816	\$12,816	1.1%	\$0	\$12,816
DDOT Region ID - F42044 - Sartan JMS Grounds	F420435	F420435 - Sartan JMS House #35	01 Oct 2010	1,818	\$1,229,450	\$0	\$200	\$200	\$200	0.0%	\$0	\$200
DDOT Region ID - F41420 - Hood River MS Bldg	F414201	F414201 - Hood River MS Bldg	01 Jan 1948	2,450	\$1,129,253	\$0	\$0	\$400	\$400	0.3%	\$0	\$3,400
DDOT Region ID - F41301 - Austin MS Grounds	F413010	F413010 - Austin MS Storage	01 Jan 1982	2,760	\$1,117,819	\$0	\$0	\$200	\$200	0.0%	\$0	\$2,760
DDOT Region ID - F43001 - Alena MS Bldg	F430001	F430001 - Alena MS Bldg	01 Jan 1941	2,434	\$1,107,860	\$0	\$0	\$250	\$250	0.2%	\$0	\$1,107,860
DDOT Region ID - F43601 - McMinville MS Grounds	F436010	F436010 - McMinville MS Office	01 Jan 1940	2,624	\$1,106,891	\$0	\$0	\$40	\$40	0.0%	\$0	\$40,260
DDOT Region ID - F41501 - Salsburg MS Storage Bldg	F415010	F415010 - Salsburg MS Storage Bldg	30 Jun 2011	2,800	\$1,106,600	\$0	\$0	\$0	\$0	0.0%	\$0	\$0
DDOT Region ID - F42099 - Veneta MS Bldg	F420990	F420990 - Veneta MS Pole Bldg	01 Aug 2007	4,913	\$1,106,600	\$0	\$0	\$0	\$0	0.0%	\$0	\$0
DDOT Region ID - F42024 - Oatridge MS New Grounds	F420234	F420234 - Oatridge MS New Grounds	01 Aug 1999	4,000	\$1,106,600	\$0	\$0	\$0	\$0	0.0%	\$0	\$0
DDOT Region ID - F42117 - Vale MS Storage Bldg	F421170	F421170 - Vale MS Storage Bldg	01 Jan 1982	3,814	\$1,106,600	\$0	\$0	\$0	\$0	0.0%	\$0	\$0
DDOT Region ID - F42099 - Veneta MS Bldg	F420990	F420990 - Veneta MS Pole Bldg	01 Aug 2007	4,913	\$1,106,600	\$0	\$0	\$0	\$0	0.0%	\$0	\$0
DDOT Region ID - F40804 - Port Orford MS Storage Bldg	F408040	F408040 - Port Orford MS Storage Bldg	01 Sep 2000	2,720	\$1,103,600	\$0	\$0	\$0	\$0	0.0%	\$0	\$0
DDOT Region ID - F41206 - La Grande MS Grounds	F412060	F412060 - La Grande MS Sign Shop	01 Jan 1984	2,840	\$1,099,963	\$0	\$0	\$0	\$0	0.0%	\$0	\$0
DDOT Region ID - F42399 - Troutdale MS Grounds	F423990	F423990 - Troutdale MS Storage Bldg	01 Jan 1982	2,840	\$1,099,963	\$0	\$0	\$0	\$0	0.0%	\$0	\$0
DDOT Region ID - F41105 - Arlington MS New Grounds	F411050	F411050 - Arlington MS Pole Bldg	31 Mar 1999	3,000	\$1,094,028	\$0	\$0	\$0	\$0	0.0%	\$0	\$0
DDOT Region ID - F42615 - Heald Hills Grounds	F426150	F426150 - Heald Hills MS Storage Bldg	16 Dec 2006	2,400	\$1,092,200	\$0	\$0	\$0	\$0	0.0%	\$0	\$0
DDOT Region ID - F42681 - West Shore Grounds	F426810	F426810 - West Shore MS Storage Bldg	30 Dec 1999	3,850	\$1,092,200	\$0	\$0	\$0	\$0	0.0%	\$0	\$0
DDOT Region ID - F42681 - West Shore Grounds	F426810	F426810 - West Shore MS Storage Bldg	30 Jun 1988	3,840	\$1,088,822	\$0	\$0	\$0	\$0	0.0%	\$0	\$0
DDOT Region ID - F43030 - Old Youngs Bay Bridge Grounds	F430301	F430301 - Old Youngs Bay Bridge Bldg #1	01 Jan 1982	164	\$1,081,600	\$0	\$0	\$0	\$0	0.0%	\$0	\$0
DDOT Region ID - F43030 - Old Youngs Bay Bridge Grounds	F430302	F430302 - Old Youngs Bay Bridge Bldg #2	01 Jan 1982	164	\$1,081,600	\$0	\$0	\$0	\$0	0.0%	\$0	\$0
DDOT Region ID - F43030 - Old Youngs Bay Bridge Grounds	F430303	F430303 - Old Youngs Bay Bridge Bldg #3	01 Jan 1982	164	\$1,081,600	\$0	\$0	\$0	\$0	0.0%	\$0	\$0
DDOT Region ID - F41823 - Lake of the Woods MS Grounds	F418230	F418230 - Lake of the Woods MS House #7	01 Jan 1982	164	\$1,081,600	\$0	\$0	\$0	\$0	0.0%	\$0	\$0
DDOT Region ID - F42003 - McKenna Bridge MS Grounds	F420030	F420030 - McKenna Bridge Post Bldg Grounds	21 Feb 2000	3,000	\$1,079,863	\$0	\$0	\$0	\$0	0.0%	\$0	\$0
DDOT Region ID - F42681 - West Shore Grounds	F426810	F426810 - West Shore MS Storage Bldg	01 Jan 1980	3,000	\$1,078,933	\$0	\$0	\$0	\$0	0.0%	\$0	\$0
DDOT Region ID - F41913 - Adel MS Residence House #15	F4191315	F4191315 - Adel MS Residence House #15	26 Jan 2015	1,536	\$1,078,404	\$0	\$0	\$0	\$0	0.0%	\$0	\$0
DDOT Region ID - F42604 - East Salem Complex Grounds 1	F426040	F426040 - East Salem Complex Grounds 1	01 Jan 1984	2,450	\$1,072,912	\$0	\$0	\$14,097	\$14,097	1.3%	\$0	\$14,097
DDOT Region ID - F41201 - Austin MS Grounds	F412010	F412010 - Austin MS Residence House #15	01 Jul 2010	1,536	\$1,068,432	\$0	\$0	\$0	\$0	0.0%	\$0	\$0
DDOT Region ID - F41201 - Austin MS Grounds	F412010	F412010 - Austin MS Residence House #26	13 Dec 2011	1,536	\$1,068,432	\$0	\$0	\$0	\$0	0.0%	\$0	\$0
DDOT Region ID - F42404 - Russell Springs Storage Grounds	F424040	F424040 - Russell Springs Sand Shed	01 Jul 1993	3,000	\$1,062,953	\$0	\$0	\$0	\$0	0.0%	\$0	\$0
DDOT Region ID - F42404 - Russell Springs Storage Grounds	F424040	F424040 - Russell Springs Sand Shed	01 Jan 1988	3,000	\$1,062,953	\$0	\$0	\$0	\$0	0.0%	\$0	\$0
DDOT Region ID - F42401 - Sunset Summit Sand Storage	F424010	F424010 - Sunset Summit Sand Storage	01 Jan 1981	2,950	\$1,059,410	\$0	\$0	\$0	\$0	0.0%	\$0	\$0
DDOT Region ID - F42382 - Basque MS Grounds	F423822	F423822 - Basque MS Residence House #22	01 Jul 2010	1,500	\$1,056,370	\$0	\$0	\$150	\$150	0.0%	\$0	\$150
DDOT Region ID - F42401 - Sunset Summit Sand Storage	F424010	F424010 - Sunset Summit Sand Storage	02 Mar 2001	2,000	\$1,052,698	\$0	\$0	\$0	\$0	0.0%	\$0	\$0
DDOT Region ID - F42406 - Band Storage Grounds	F424060	F424060 - Band Sand Shed	01 Jan 1996	1,787	\$1,052,431	\$0	\$0	\$0	\$0	0.0%	\$0	\$0
DDOT Region ID - F42404 - Russell Springs Storage Grounds	F424040	F424040 - Russell Springs Sand Shed	01 Jan 1984	2,776	\$1,048,698	\$0	\$1,024	\$12,618	\$12,618	5.6%	\$1,024	\$12,618
DDOT Region ID - F41702 - Clifton MS Storage Grounds	F417020	F417020 - Clifton MS Storage House #15	01 Jan 1987	1,863	\$1,048,527	\$0	\$0	\$0	\$0	0.0%	\$0	\$0
DDOT Region ID - F40813 - Ows Slough MS Grounds	F408130	F408130 - Ows Slough Office	30 Jul 2011	2,000	\$1,043,143	\$0	\$0	\$0	\$0	0.0%	\$0	\$0
DDOT Region ID - F42604 - East Salem Complex Grounds 1	F426040	F426040 - Klammath Falls Sand Shed	01 Jan 1986	3,800	\$1,041,471	\$0	\$0	\$0	\$0	0.0%	\$0	\$0
DDOT Region ID - F41105 - Arlington MS New Grounds	F411050	F411050 - Arlington MS Residence House #15	10 May 2007	1,980	\$1,040,900	\$0	\$0	\$0	\$0	0.0%	\$0	\$0
DDOT Region ID - F42419 - Band Storage Grounds	F424190	F424190 - Band School Storage	01 Jan 1980	1,750	\$1,037,443	\$0	\$0	\$0	\$0	0.0%	\$0	\$0
DDOT Region ID - F42419 - Band Storage Grounds	F424190	F424190 - Band School Storage	01 Jan 1980	1,750	\$1,037,443	\$0	\$0	\$0	\$0	0.0%	\$0	\$0
DDOT Region ID - F42419 - Band Storage Grounds	F424190	F424190 - Band School Storage	01 Jan 1980	1,750	\$1,037,443	\$0	\$0	\$0	\$0	0.0%	\$0	\$0
DDOT Region ID - F42419 - Band Storage Grounds	F424190	F424190 - Band School Storage	01 Jan 1980	1,750	\$1,037,443	\$0	\$0	\$0	\$0	0.0%	\$0	\$0
DDOT Region ID - F42419 - Band Storage Grounds	F424190	F424190 - Band School Storage	01 Jan 1980	1,750	\$1,037,443	\$0	\$0	\$0	\$0	0.0%	\$0	\$0
DDOT Region ID - F42419 - Band Storage Grounds	F424190	F424190 - Band School Storage	01 Jan 1980	1,750	\$1,037,443	\$0	\$0	\$0	\$0	0.0%	\$0	\$0
DDOT Region ID - F42419 - Band Storage Grounds	F424190	F424190 - Band School Storage	01 Jan 1980	1,750	\$1,037,443	\$0	\$0	\$0	\$0	0.0%	\$0	\$0
DDOT Region ID - F42419 - Band Storage Grounds	F424190	F424190 - Band School Storage	01 Jan 1980	1,750	\$1,037,443	\$0	\$0	\$0	\$0	0.0%	\$0	\$0
DDOT Region ID - F42419 - Band Storage Grounds	F424190	F424190 - Band School Storage	01 Jan 1980	1,750	\$1,037,443	\$0	\$0	\$0	\$0	0.0%	\$0	\$0
DDOT Region ID - F42419 - Band Storage Grounds	F424190	F424190 - Band School Storage	01 Jan 1980	1,750	\$1,037,443	\$0	\$0	\$0	\$0	0.0%	\$0	\$0
DDOT Region ID - F42419 - Band Storage Grounds	F424190	F424190 - Band School Storage	01 Jan 1980	1,750	\$1,037,443	\$0	\$0	\$0	\$0	0.0%	\$0	\$0
DDOT Region ID - F42419 - Band Storage Grounds	F424190	F424190 - Band School Storage	01 Jan 1980	1,750	\$1,037,443	\$0	\$0	\$0	\$0	0.0%	\$0	\$0
DDOT Region ID - F42419 - Band Storage Grounds	F424190	F424190 - Band School Storage	01 Jan 1980	1,750	\$1,037,443	\$0	\$0	\$0	\$0	0.0%	\$0	\$0
DDOT Region ID - F42419 - Band Storage Grounds	F424190	F424190 - Band School Storage	01 Jan 1980	1,750	\$1,037,443	\$0	\$0	\$0	\$0	0.0%	\$0	\$0
DDOT Region ID - F42419 - Band Storage Grounds	F424190	F424190 - Band School Storage	01 Jan 1980	1,750	\$1,037,443	\$0	\$0	\$0	\$0	0.0%	\$0	\$0
DDOT Region ID - F42419 - Band Storage Grounds	F424190	F424190 - Band School Storage	01 Jan 1980	1,750	\$1,037,443	\$0	\$0	\$0	\$0	0.0%	\$0	\$0
DDOT Region ID - F42419 - Band Storage Grounds	F424190	F424190 - Band School Storage	01 Jan 1980	1,750	\$1,037,443	\$0	\$0	\$0	\$0	0.0%	\$0	\$0
DDOT Region ID - F42419 - Band Storage Grounds	F424190	F424190 - Band School Storage	01 Jan 1980	1,750	\$1,037,443	\$0	\$0	\$0	\$0	0.0%	\$0	\$0
DDOT Region ID - F42419 - Band Storage Grounds	F424190	F424190 - Band School Storage	01 Jan 1980	1,750	\$1,037,443	\$0	\$0	\$0	\$0	0.0%	\$0	\$0
DDOT Region ID - F42419 - Band Storage Grounds	F424190	F424190 - Band School Storage	01 Jan 1980	1,750	\$1,037,443	\$0	\$0	\$0	\$0	0.0%	\$0	\$0
DDOT Region ID - F42419 - Band Storage Grounds	F424190	F424190 - Band School Storage	01 Jan 1980	1,750	\$1,037,443	\$0	\$0	\$0	\$0	0.0%	\$0	\$0
DDOT Region ID - F42419 - Band Storage Grounds	F424190	F424190 - Band School Storage	01 Jan 1980	1,750	\$1,037,443	\$0	\$0	\$0	\$0	0.0%	\$0	\$0
DDOT Region ID - F42419 - Band Storage Grounds	F424190	F424190 - Band School Storage	01 Jan 1980	1,750	\$1,037,443	\$0	\$0	\$0	\$0	0.0%	\$0	\$0
DDOT Region ID - F42419 - Band Storage Grounds	F424190	F424190 - Band School Storage	01 Jan 1980	1,750	\$1,037,443	\$0	\$0	\$0	\$0	0.0%	\$0	\$0
DDOT Region ID - F42419 - Band Storage Grounds	F424190	F424190 - Band School Storage	01 Jan 1980	1,750	\$1,037,443	\$0	\$0	\$0	\$0	0.0%	\$0	\$0
DDOT Region ID - F42419 - Band Storage Grounds	F424190	F424190 - Band School Storage	01 Jan 1980	1,750	\$1,037,443	\$0	\$0	\$0	\$0	0.0%	\$0	\$0
DDOT Region ID - F42419 - Band Storage Grounds	F424190	F424190 - Band School Storage	01 Jan 1980	1,750	\$1,037,443	\$0	\$0	\$0	\$0	0.0%	\$0	\$0
DDOT Region ID - F42419 - Band Storage Grounds	F424190	F424190 - Band School Storage	01 Jan 1980	1,750	\$1,037,443	\$0	\$0	\$0	\$0	0.0%	\$0	\$0
DDOT Region ID - F42419 - Band Storage Grounds	F424190	F424190 - Band School Storage	01 Jan 1980	1,750	\$1,037,443	\$0	\$0	\$0	\$0	0.0%	\$0	\$0
DDOT Region ID - F42419 - Band Storage Grounds	F424190	F424190 - Band School Storage	01 Jan 1980	1,750	\$1,037,443	\$0	\$0	\$0	\$0	0.0%	\$0	\$0
DDOT Region ID - F42419 - Band Storage Grounds	F424190	F424190 - Band School Storage	01 Jan 1980	1,750	\$1,037,443	\$0	\$0	\$0	\$0	0.0%	\$0	\$0
DDOT Region ID - F42419 - Band Storage Grounds	F424190	F424190 - Band School Storage	01 Jan 1980	1,750	\$1,037,443	\$0	\$0	\$0	\$0	0.0%	\$0	\$0
DDOT Region ID - F42419 - Band Storage Grounds	F424190	F424190 - Band School Storage	01 Jan 1980	1,750	\$1,037,443	\$0	\$0	\$0	\$0	0.0%	\$0	\$0
DDOT Region ID - F42419 - Band Storage Grounds	F424190	F424190 - Band School Storage	01 Jan 1980	1,750	\$1,037,443	\$0	\$0	\$0	\$0	0.0%	\$0	\$0
DDOT Region ID - F42419 - Band Storage Grounds	F424190	F424190 - Band School Storage	01 Jan 1980	1,750	\$1,037,443	\$0	\$0	\$0	\$0	0.0%	\$0	\$0
DDOT Region ID - F42419 - Band Storage Grounds	F424190	F424190 - Band School Storage	01 Jan 1980	1,750	\$1,037,443	\$0	\$0	\$0	\$0	0.0%	\$0	\$0
DDOT Region ID - F42419 - Band Storage Grounds	F424190	F424190 - Band School Storage	01 Jan 1980	1,750	\$1,037,443	\$0	\$0	\$0	\$0	0.0%	\$0	\$0
DDOT Region ID - F42419 - Band Storage Grounds	F424190	F424190 - Band School Storage	01 Jan 1980	1,750	\$1,037,443	\$0	\$0	\$0	\$0	0.0%	\$0	\$0
DDOT Region ID - F42419 - Band Storage Grounds	F424190	F424190 - Band School Storage	01 Jan 1980	1,750	\$1,037,443	\$0	\$0	\$0	\$0	0.0%	\$0	\$0
DDOT Region ID - F42419 - Band Storage Grounds	F424190	F424190 - Band School Storage	01 Jan 1980	1,750	\$1,037,443	\$0	\$0	\$0	\$0	0.0%	\$0	\$0
DDOT Region ID - F42419 - Band Storage Grounds	F424190	F424190 - Band School Storage	01 Jan 1980	1,750	\$1,037,443	\$0	\$0	\$0	\$0	0.0%	\$0	\$0
DDOT Region ID - F42419 - Band Storage Grounds	F424190	F424190 - Band School Storage										

ODOT Region Wireless - F73317 - Shenko Tanker Generator Shelters	F7331700	F7331703 - Shenko Tanker Generator Shelter	09 Jun 2014	119	\$9,360	\$0	\$0	\$0	\$0	\$0	0.0%	\$0	\$0
ODOT Region Wireless - F732091 - Flora #1 Station Grounds	F7320901	F7320901 - Flora #1 Sta Bldg	21 Jun 2011	36	\$9,791	\$0	\$0	\$0	\$0	\$0	0.0%	\$0	\$0
ODOT Region Wireless - F718096 - Gladys Creek MW	F7180960	F7180960 - Gladys Creek MW Gen Bldg	01 Sep 2009	110	\$7,200	\$0	\$0	\$0	\$0	\$0	0.0%	\$0	\$0
ODOT Region Wireless - F711080 - Coltonwood Canyon Rk Ph MW Bldgs	F7110801	F7110801 - Coltonwood Canyon Rk Ph MW Bldgs	17 Apr 2010	120	\$7,176	\$0	\$0	\$0	\$0	\$0	0.0%	\$0	\$0
ODOT Region 05 - F42105 - Jordan Valley MS Grounds	F4210512	F4210512 - Jordan Valley MS Tractor Shed	01 Jan 2009	693	\$6,139	\$0	\$0	\$0	\$0	\$0	0.0%	\$0	\$0
ODOT Region Wireless - F708100 - Fair MW Grounds	F7081001	F7081001 - Fair MW Bldg	01 Jan 1993	160	\$6,032	\$0	\$0	\$0	\$0	\$0	0.0%	\$0	\$0
ODOT Region 04 - F40916 - Bend MS Grounds	F4091614	F4091614 - Bend Fuel Support Bldg	01 May 2012	48	\$5,858	\$0	\$0	\$0	\$0	\$0	0.0%	\$0	\$0
ODOT Region Wireless - F706001 - Baby Butte MW Grounds	F7060011	F7060011 - Baby Butte MW Bldg	01 Jul 2004	96	\$5,200	\$0	\$0	\$0	\$0	\$0	0.0%	\$0	\$0
ODOT Region Wireless - F723150 - Monogay Mountain MW Grounds	F7231501	F7231501 - Monogay Mt MW Bldg	01 Jun 2013	200	\$5,200	\$0	\$0	\$0	\$0	\$0	0.0%	\$0	\$0
ODOT Region 04 - F30005 - Brothers Oasis RA Grounds	F3000515	F3000515 - Brothers Oasis Storage Bldg	31 Jul 2014	120	\$5,200	\$0	\$0	\$0	\$0	\$0	0.0%	\$0	\$0
ODOT Region 05 - F42105 - Jordan Valley MS Grounds	F4210515	F4210515 - Jordan Valley MS Shop/Storage	01 Jan 2010	800	\$4,825	\$0	\$0	\$0	\$0	\$0	0.0%	\$0	\$0
ODOT Region 05 - F41008 - Prospect MS Grounds	F4100811	F4100811 - Prospect MS Fuel Station Support Bldg	15 Mar 2004	19	\$4,811	\$0	\$1,500	\$0	\$1,500	\$3,311	0.0%	\$1,500	\$1,500
ODOT Region Wireless - F720070 - Harman Peak MW Grounds	F7200701	F7200701 - Harman Peak MW Equipment Shelter #1	01 Jan 2013	336	\$4,160	\$0	\$0	\$0	\$0	\$0	0.0%	\$0	\$0
ODOT Region 01 - F40105 - Minner MS Grounds	F4010517	F4010517 - Minner MS Cold Storage	01 Jan 2012	750	\$24,432	\$0	\$0	\$0	\$0	\$0	0.0%	\$0	\$0
ODOT Region Wireless - F730010 - Mt Scott MW Operating Grounds	F7300103	F7300103 - Mt Scott MW Bldg 3	18 Jul 2010	250	\$23,872	\$0	\$0	\$0	\$0	\$0	0.0%	\$0	\$0
ODOT Region Wireless - F720200 - Glenside Ridge MW Grounds	F7202001	F7202001 - Glenside Ridge MW Bldg 01	18 Sep 2003	312	\$23,876	\$0	\$0	\$0	\$0	\$0	0.0%	\$0	\$0
ODOT Region Wireless - F730002 - Coltonwood #1 MW Grounds	F7300020	F7300020 - Coltonwood #1 MW Bldg	18 Mar 2012	310	\$23,242	\$0	\$0	\$0	\$0	\$0	0.0%	\$0	\$0
ODOT Region Wireless - F731095 - Ladd Canyon MW Grounds	F7310951	F7310951 - Ladd Canyon MW	03 Jan 2014	270	\$21,560	\$0	\$0	\$0	\$0	\$0	0.0%	\$0	\$0
ODOT Region Wireless - F733009 - Hulse Ranch MW Grounds	F7330092	F7330092 - Hulse Ranch Generator Bldg	22 Nov 2010	384	\$20,832	\$0	\$0	\$0	\$0	\$0	0.0%	\$0	\$0
ODOT Region Wireless - F730010 - Chisholm MW Operating Grounds	F7300103	F7300103 - Chisholm Mt Gen Bldg	01 Jan 2009	360	\$19,050	\$0	\$0	\$0	\$0	\$0	0.0%	\$0	\$0
Subtotal Under \$1M CRV				607,446	203,555,638	123,000	998,628	2,364,204	99,000	3,485,832	34	0	3,485,832

Definitions			
Current Maintenance Priority 1-4	1	Current costs for all facility maintenance and deferred maintenance except those that are covered in operations and maintenance budgets (routine maintenance).	
Construction Year	2	Original Construction Year	
Current Replacement Value	3	Current Replacement Value Reported to Risk Management or Calculated Replacement Value Reported from Facility Conditions Assessment (FCA)	
Priority One - Currently Critical	4	From the Budget Instruction: Priority One projects are conditions that require immediate action in order to address code and accessibility violations that affect life safety, BUILDING envelope issues (roof, sides, windows and doors) that pose immediate safety concerns should be included in this category.	
Priority Two - Potentially Critical	5	From the Budget Instruction: Priority Two projects are to be undertaken in the near future to maintain the integrity of the facility and accommodate current agency program requirements. Included are systems that are functioning improperly or at limited capacity, and if not addressed, will cause additional system deterioration and added repair costs. Also included are significant building envelope issues (roof, sides, windows and doors) that, if not addressed, will cause additional system deterioration and added repair costs.	
Priority Three - Necessary - Not yet Critical	6	From the Budget Instructions: Priority Three projects could be undertaken in the near to mid-term future to maintain the integrity of a building and to address building systems, building components and site work that have reached or exceeded their useful life based on industry standards, but are still functioning in some capacity. These projects may require attention currently to avoid deterioration, potential downtime and consequently higher costs if corrective action is delayed.	
Priority Four: Seismic and Natural Hazard Remediation	7	From the Budget Instructions: Priority Four projects improve seismic performance of buildings constructed prior to 1995 building code changes to protect occupants, minimize building damage and speed recovery after a major earthquake. Projects also include those that mitigate significant flood hazards.	
Facility Condition Index	8	A calculated measure of facility condition relative to its current replacement value (expressed as a percentage).	

Current Maintenance Priority 5: For Owned Assets Over \$1M CRV

Campus		iPlan Data (Incl Soft Costs)		Building Name		Construction Date		Gross Square Footage		Current Replacement Value		Modernization Estimate		Notes/Description			
		Building ID	Building Name	C		D		E		F		G		H			
ODOT Region 01 - F40327	Lawfield MS Grounds	F4032702	Lawfield MS D2B Office & Shop			30 Jun 1985		97003.87		\$22,374,860		\$31,568					
ODOT Region 05 - F43111	Region 5 HQ Grounds	F4311101	Region 5 HQ Bldg			30 Jun 1990		40425.69		\$11,640,929		\$181,963					
ODOT Region 01 - F42619	Barlow School Grounds	F4261901	Barlow School Office Bldg			01 Jan 1979		22280.43		\$8,417,073		\$200,000					
ODOT Region 01 - F42618	E Portland MS Grounds	F4261801	E Portland MS Shop Bldg			01 Jan 1978		9781		\$3,104,466		\$5,500,000					
ODOT Region 02 - F42111	Rose Lodge MS Grounds	F4211101	Rose Lodge MS Bldg			01 Jan 1996		9328.92		\$2,967,668		\$1,008					
ODOT Region 05 - F40107	Baker City MS Grounds	F4010702	Baker City MS Storage Bldg			02 May 2011		11000		\$2,924,178		\$34,615					
ODOT Region 03 - F41025	Shady MS New Grounds	F4102502	Shady MS Bldg			01 Jan 1985		7100		\$2,752,460		\$1,055,416					
ODOT Region 03 - F41707	Grants Pass MS Grounds	F4170701	Grants Pass MS Bldg			01 Jan 1974		7720		\$2,582,785		\$81,660					
ODOT Region 02 - F40206	Corvallis MS New Grounds	F4020604	Corvallis Dist 4 Office Bldg			01 Jan 1967		9072.17		\$2,540,805		\$115,000					
ODOT Region 04 - F43305	Warm Springs MS Grounds	F4330505	Warm Springs MS Bldg			01 Jan 1951		6500		\$2,500,794		\$12,000					
ODOT Region 05 - F43104	Elgin MS Grounds	F4310401	Elgin MS Bldg			01 Jan 1946		7308.17		\$2,486,915		\$175,000					
ODOT Region 05 - F43109	La Grande MS Grounds	F4310901	District 13 Office/DMV			01 Jan 1972		5675.87		\$2,461,628		\$85,000					
ODOT Region 02 - F41808	Odeil Lake MS Grounds	F4180801	Odeil Lake MS Bldg			01 Jan 1971		7080		\$2,458,204		\$90,181					
ODOT Region 03 - F41516	Central Point MS Grounds	F4151601	Central Point MS Bldg			01 Jan 1961		8480		\$2,415,662		\$1,076,000					
ODOT Region 05 - F43022	Pendleton MS Grounds	F4302202	Pendleton Enclosure Storage Bldg A			01 Jun 1988		8400		\$2,114,528		\$1,500					
ODOT Region 05 - F42308	Basque MS Grounds	F4230801	Basque MS Bldg			01 Jan 1940		4700		\$2,080,528		\$75,000					
ODOT Region 05 - F42321	Ontario MS New Grounds	F4232101	Ontario MS Office/OSP			31 Dec 1999		5978.58		\$2,051,619		\$34,056					
ODOT Region 01 - F40306	Milwaukie Reg 1 Grounds	F4030601	Milwaukie Reg 1 Office Stone Bldg			01 Jan 1938		17655		\$1,699,620		\$1,500,000					
ODOT Region 05 - F41301	Warm Springs MS Grounds	F4130107	Burns New MS Bldg			01 Jan 1985		3850		\$1,695,895		\$28,841					
ODOT Region 03 - F40804	Port Orford MS Grounds	F4080401	Port Orford MS Bldg			01 Jan 1952		3660		\$1,615,284		\$16,846					
ODOT Region 05 - F41201	Austin MS Grounds	F4120117	Austin MS Bldg			01 Jan 1968		3600		\$1,574,052		\$2,000					
ODOT Region 03 - F41007	Steamboat MS Grounds	F4100705	Steamboat Office			01 Jan 1951		2560		\$1,477,363		\$600,000					
ODOT Region 05 - F42317	Vale MS Grounds	F4231705	Vale MS Bldg			30 Jun 1987		4012.5		\$1,402,762		\$5,000					
ODOT Region 01 - F42618	E Portland MS Grounds	F4261802	E Portland MS Office			01 Jan 1978		3072		\$1,166,099		\$2,000,000					
ODOT Region 05 - F42308	Basque MS Grounds	F4230822	Basque MS Residence House #22			01 Jul 2010		1500		\$1,056,370		\$10,000					
ODOT Region 05 - F41201	Austin MS Grounds	F4120103	Austin MS Residence House #03			01 Jan 1931		1470		\$1,022,523		\$205,000					
ODOT Region 05 - F41301	Burns MS Grounds	F4130104	Burns MS Maint Bldg			01 Jan 1958		2380		\$970,947		\$5,000					
ODOT Region 04 - F41905	Alkali Lake MS Grounds	F4190514	Alkali Lake MS MH #14			30 Jun 1986		1344		\$947,918		\$16,000					
ODOT Region 05 - F42306	Juntura MS Grounds	F4230613	Juntura MS House #13			01 Jul 2010		1500		\$900,728		\$90,000					
ODOT Region 05 - F42306	Juntura MS Grounds	F4230615	Juntura MS House #15			06 Feb 2015		1500		\$900,728		\$91,000					
ODOT Region 02 - F42204	Santiam Jct MS Grounds	F4220405	Santiam Jct MS Residence House #05			01 Jan 1942		1282		\$891,524		\$250,000					
ODOT Region 02 - F42204	Santiam Jct MS Grounds	F4220406	Santiam Jct MS Residence House #06			01 Jan 1942		1282		\$891,524		\$250,000					
ODOT Region 03 - F40804	Port Orford MS Grounds	F4080407	Port Orford Pole Bldg			11 Apr 1986		2028		\$828,927		\$8,650					
ODOT Region 05 - F42306	Juntura MS Grounds	F4230616	Juntura MS House #16			16 Sep 2020		1492		\$624,000		\$140,000					
ODOT Region 05 - F42308	Basque MS Grounds	F4230826	Basque MS Residence House #26			20 Nov 2020		1492		\$624,000		\$25,000					
ODOT Region 02 - F42204	Santiam Jct MS Grounds	F4220414	Santiam Jct MS Residence Trailer #14			01 Jan 1966		720		\$500,700		\$450,000					
ODOT Region CCD - F51008	NB Booth Ranch Scale House Grounds	F5100803	Booth Ranch Scale House NB			15 Apr 2024		349		\$327,024		\$250,000					
ODOT Region CCD - F53103	La Grande Scale House Grounds	F5310303	La Grande Scale House			30 Jun 1982		200		\$202,451		\$30,000					
ODOT Region CCD - F51504	NB Ashland Scale House Grounds	F5150401	NB Ashland Scale House			01 Jan 1970		120		\$104,078		\$20,000					
ODOT Region CCD - F53602	Dayton Scale House Grounds	F5360201	Dayton Scale House			01 Jan 1951		120		\$104,078		\$40,000					
ODOT Region 02 - F42204	Santiam Jct MS Grounds	F4220407	Santiam Jct MS Garage #07			01 Jan 1939		360		\$79,575		\$2,000					
ODOT Region 05 - F43505	Spray MS New Grounds	F4350502	Spray MS Pump House			30 Jun 1986		168		\$46,940		\$800,000					
ODOT Region 01 - F42621	I-205/Banfield Air Monitor Grounds	F4262101	96th SE Schiller Air Monitor			01 Jan 1981		160		\$37,745		\$1,200					
										Subtotal Over \$1M CRV		\$100,435,838		\$15,676,504			

Definitions

Priority Five: Modernization	1
Construction Year	2
Current Replacement Value	3

From the Budget Instructions: Priority Five projects are alterations or replacement of facilities solely to implement new or higher standards to accommodate new functions, significantly improve existing functionality or replacement of building components that typically last more than 50 years (such as the building structure or foundations). These standards include system and aesthetic upgrades which represent sensible improvements in existing condition. These projects improve the overall usability and reduce long-term maintenance requirements. Given the significant nature of these projects, the work typically addresses deficiencies that do not meet current codes, but are "grandfathered" in their existing condition to the extent feasible.

Original Construction Year

Current Replacement Value Reported to Risk Management or Calculated Replacement Value Reported from Facility Conditions Assessment (FCA)

**Facility Plan - Facilities Planning Narrative 107BF02
2025-27 Biennium**

Agency Name Oregon Department of Transportation

1. What are the key drivers for your agency's facility needs, and how do you measure space/facility demand?

Highway lane miles maintained by each Maintenance Station, equipment size and maintenance needs, safety needs driven by weather conditions, environmental factors and availability of resources in the immediate vicinity.

2. What are the key facility-related challenges over the next 10-years? (Please answer in order of priority)

1. Lack of funding due to revenue stream logistics
2. Modernization of equipment is well ahead of funding to replace obsolete and inadequate structures to house the equipment
3. Obsolete buildings leave expensive equipment unprotected and reduce the lifespan
4. Seismic retro fits needed on several structures
5. Growing time lines for jurisdictional permits pushing beyond biennial funding timelines

3. What do you need to meet these challenges

Resolution of the revenue stream issues sooner rather than later. Capital Improvement threshold raised to \$2M to allow modernization of buildings to protect equipment. Fully staffed crews to manage the projects.

<p>RSF</p>	<p>8</p>	<p>Rentable SF per BOMA definition. The total usable area plus a pro-rated allocation of the floor and building building.</p>
<p>O&M</p>	<p>9</p>	<p>Total Operations and Maintenance Costs for facilities including all maintenance, utilities and janitorial</p>

Facility Plan - Facility O&M/DM Report 107B16b
2025-27 Biennium

Agency Name

Oregon Department of Transportation

Facilities Operations and Maintenance (O&M) Budget excluding Capital Improvements and Deferred Maintenance

Personal Services (PS) Operations and Maintenance
Services and Supplies (S&S) Operations and Maintenance
Utilities not included in PS and S&S above
Total O&M
O&M \$/SF

1	2021-23 Actual	2023-25 LAB	2025-27 Budgeted	2027-29 Budgeted
	\$7,756,446	\$8,260,615	\$8,533,215	\$8,814,811
	\$18,886,650	\$20,114,282	\$20,778,051	\$21,463,727
	\$7,978,328	\$8,776,161	\$9,653,777	\$10,619,155
	\$34,621,424	\$37,151,058	\$38,965,043	\$40,897,693
	\$0.029	\$0.031	\$0.032	\$0.034

Total O&M SF

1,205,781,252 Include only the SF for which your agency provides O&M funding.

O&M Estimated Fund Split Percentage %

2	General Fund	Lottery Fund	Other Funds	Federal Funds
			100%	

Deferred Maintenance Funding In Current Budget Model

Total Short and Long Term Deferred Maintenance Plan for Facilities

Priorities 1-3 - Currently, Potentially and Not Yet Critical
Priority 4 - Seismic & Natural Hazard
Priority 5 - Modernization

**Total Priority Need
Facility Condition Index (Priority 1-3 Needs/CRV)**

3	Current Costs 2024	Ten Year Projection	2025-27 Budgeted SB 1067 (2% CRV min.)	2027-29 Projected SB 1067 (2% CRV min.)
4,5,6	\$39,021,444	\$445,805,411	\$9,962,000	\$9,962,000
7	\$15,300	\$1,439,270	\$	0
8	\$15,676,504	\$400,000,000	0	0
9	\$54,713,248	\$847,244,681	\$44,751,248	\$837,282,681
	3.24%	36.97%	2.41%	36.15%

Assets CRV

\$1,205,781,252 Current Replacement Value Reported to Risk or Calculated Replacement Value Reported from Facility Conditions Assessment (FCA)

Process/Software for routine maintenance (O&M)
Process/Software for deferred maintenance/renewal
Process for funding facilities maintenance

customer needs	Provide narrative
Zlink - prioritization based on FCA, regular inspections and funding limitations	Provide narrative
Central Services funding, some of which comes from districts via building base budgets	Provide narrative

From iPlan FCA

Note: Future budget estimates ascertained using PCI percentage for each year

Definitions

The Facilities Operations and Maintenance budget includes costs to operate and maintain facilities and keep them in repair including utilities, janitorial and maintenance costs. Maintenance costs are categorized as external building (roof, siding, windows, etc.); interior systems (electrical, mechanical, interior walls, doors, etc.); roads and ground (groundskeeper, parking lots, sidewalks, etc.) and centrally operated systems (electrical, mechanical, etc.). Agencies with significant facilities may include support staff if directly associated with facilities maintenance activities. Do not include other overhead costs such as accounting, central government charges, etc.

Facilities Operations and Maintenance Budget
O&M Estimated Fund Split Percentage %

1 Show the fund split by percentage of fund source allocated to facility O&M for your agency
2

<p>Total Short and Long Term Maintenance and Deferred Maintenance Plan for Facilities Value Over \$1M</p>	<p>3</p>	<p>All Maintenance excluding routine O&M costs. 25-27 and 27-29 auto-populates with 2% of the sum of your agency portfolio's CRV. Written to deliver on SB 1067: SECTION 9. (1) Each biennium, the Governor shall propose as part of the Governor's recommended budget an amount for deferred maintenance and capital improvements on existing state-owned buildings and infrastructure that is equivalent to at least two percent of the current replacement value of the state-owned buildings and infrastructure.</p>
<p>Priority One: Currently Critical</p>	<p>4</p>	<p>From the Budget Instruction: Priority One projects are conditions that require immediate action in order to address code and accessibility violations that affect life safety. Building envelope issues (roof, sides, windows and doors) that pose immediate safety concerns should be included in this category.</p>
<p>Priority Two: Potentially Critical</p>	<p>5</p>	<p>From the Budget Instruction: Priority Two projects are to be undertaken in the near future to maintain the integrity of the facility and accommodate current agency program requirements. Included are systems that are functioning improperly or at limited capacity, and if not addressed, will cause additional system deterioration and added repair costs. Also included are significant building envelope issues (roof, sides, windows and doors) that, if not addressed, will cause additional system deterioration and added repair costs.</p>
<p>Priority Three: Necessary - Not yet Critical</p>	<p>6</p>	<p>From the Budget Instructions: Priority Three projects could be undertaken in the near to mid-term future to maintain the integrity of a building and to address building systems, building components and site work that have reached or exceeded their useful life based on industry standards, but are still functioning in some capacity. These projects may require attention currently to avoid deterioration, potential downtime and consequently higher costs if corrective action is deferred.</p>
<p>Priority Four: Seismic and Natural Hazard Remediation</p>	<p>7</p>	<p>From the Budget Instructions: Priority Four projects improve seismic performance of buildings constructed prior to 1995 building code changes to protect occupants, minimize building damage and speed recovery after a major earthquake. Projects also include those that mitigate significant flood hazards.</p>
<p>Priority Five: Modernization</p>	<p>8</p>	<p>From the Budget Instructions: Priority Five projects are alterations or replacement of facilities solely to implement new or higher standards to accommodate new functions, significantly improve existing functionality as well as replacement of building components that typically last more than 50 years (such as the building structure or foundations). These standards include system and aesthetic upgrades which represent sensible improvements to the existing condition. These projects improve the overall usability and reduce long-term maintenance requirements. Given the significant nature of these projects, the work typically addresses deficiencies that do not conform to current codes, but are 'grandfathered' in their existing condition to the extent feasible.</p>
<p>Facility Condition Index</p>	<p>9</p>	<p>A calculated measure of facility condition relative to its current replacement value (expressed as a percentage)</p>

Facility Plan - Major Construction/ Acquisition Project Narrative 107BF11
 2025-27 Biennium

Note: Complete a separate form for each project

Agency	Oregon Department of Transportation		Schedule	
Project Name	None		Start Date	
Address /Location		Cost Estimate	Cost Est. Date	Est. Comp
		GSF	# Stories	
			Land Use/Zoning Satisfied	
			Y	

Funding Source/s: Show the distribution of dollars by funding source for the full project cost.	General Funds	Lottery	Other	Fed

Description of Agency Business/Master Plan and Project Purpose/Problem to be Corrected

ODOT has no CC projects planned for 25-27

Project Scope and Alternates Considered

Project Budget Estimate - Escalate to the mid-point of construction. Use 4.5% Annual Escalation.

DIRECT CONSTRUCTION COSTS

- 1 Building Cost Estimate
- 2 Site Cost Estimate (20 Ft beyond building footprint)
- 3 **TOTAL DIRECT CONSTRUCTION COSTS**

	\$	% Project Cost	\$/C
=			

INDIRECT CONSTRUCTION COSTS

- 4 Owner Equipment / Furnishings / Special Systems
- 5 Construction Related Permits & Fees
- Other Indirect Construction Costs Including 1% Art, 1.5% Renewable Energy and
6 other state requirements
- 7 Architectural, Engineering Consultants
- 8 Other Design and PM Costs
- 9 Relocation/Swing Space Costs
- 10 **TOTAL SOFT COSTS**

11 OWNER'S PROJECT CONTINGENCY

TOTAL PROJECT COST

	\$	% Project Cost	\$/C

Cost Estimate Source (EG Agency, Cost Estimator, A/E, etc.)

Project Image/Illustration (optional)
