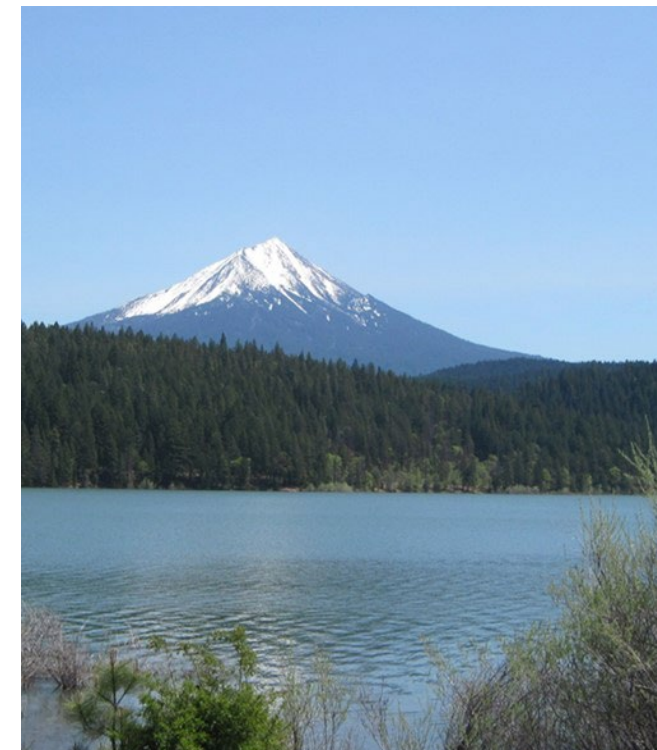




MEDFORD WATER

Water for the Next Century



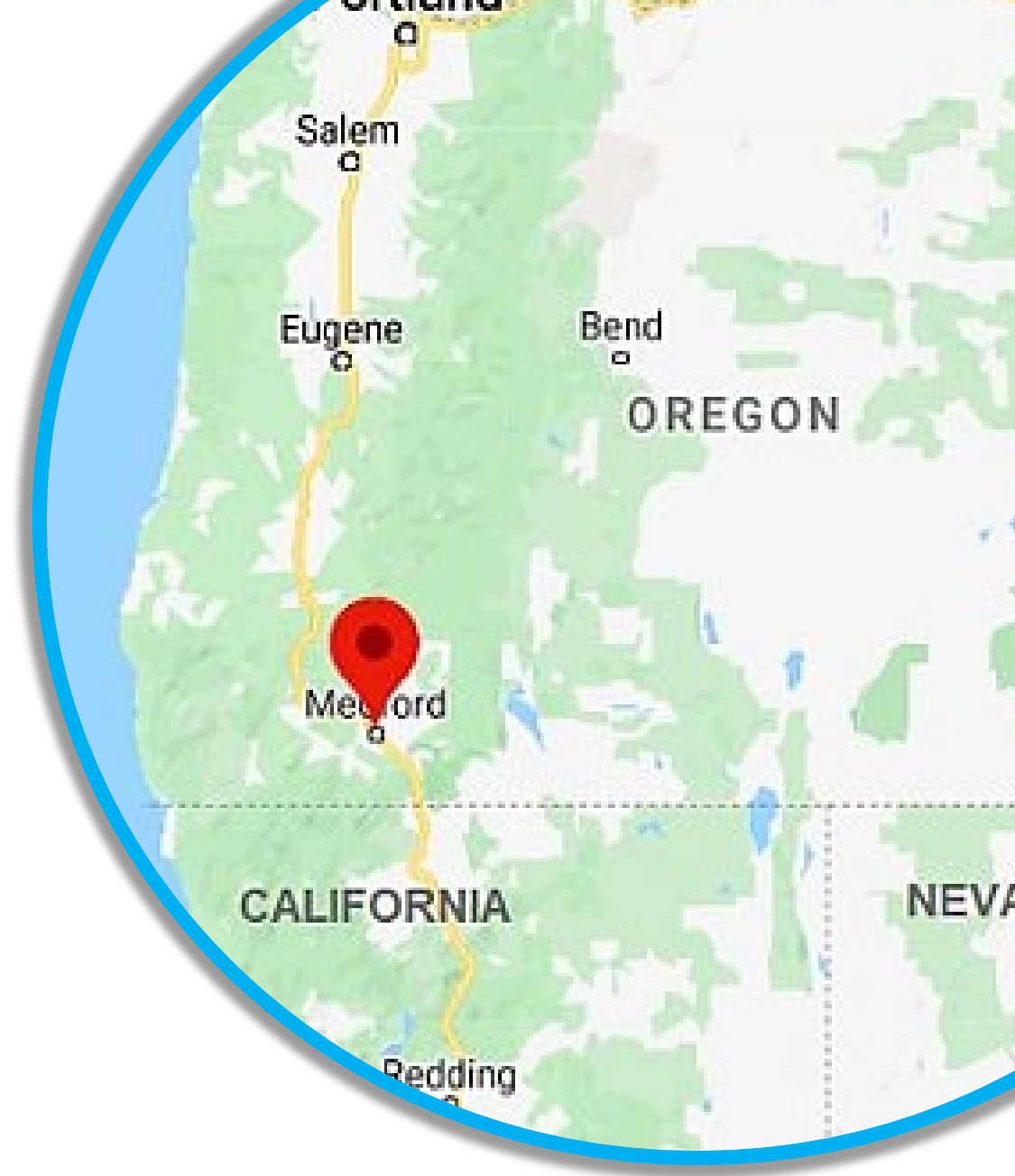
September 16, 2022

Brad Taylor, General Manager



Overview of Medford Water

- Autonomous agency of the City of Medford
- Established by Charter in 1922
- Governed by a five-member Board of Commissioners
- 66 full-time employees
- Serves over 140,000+ customers



Our Vision, Mission, and Values

To be the Rogue Valley's trusted municipal water provider for present and future generations, through responsible stewardship, accountability, and the pursuit of excellence.



- Worth
- Accountability
- Trust
- Excellence
- Respect

To be the Rogue Valley's trusted municipal water provider for present and future generations; through responsible stewardship, accountability, and the pursuit of excellence.

To safeguard public health by providing a reliable, high-quality water supply at the best value.

VISION MISSION VALUES

WORTH. To our community.
We deliver the best value for existing and future customers.

ACCOUNTABILITY. In everything we do.
We build strong relationships through open communication.

TRUST. We strive to earn it.
Public health is our number one priority.

EXCELLENCE. In water quality, customer service, and reliability.
We bring forward-thinking solutions to challenges.

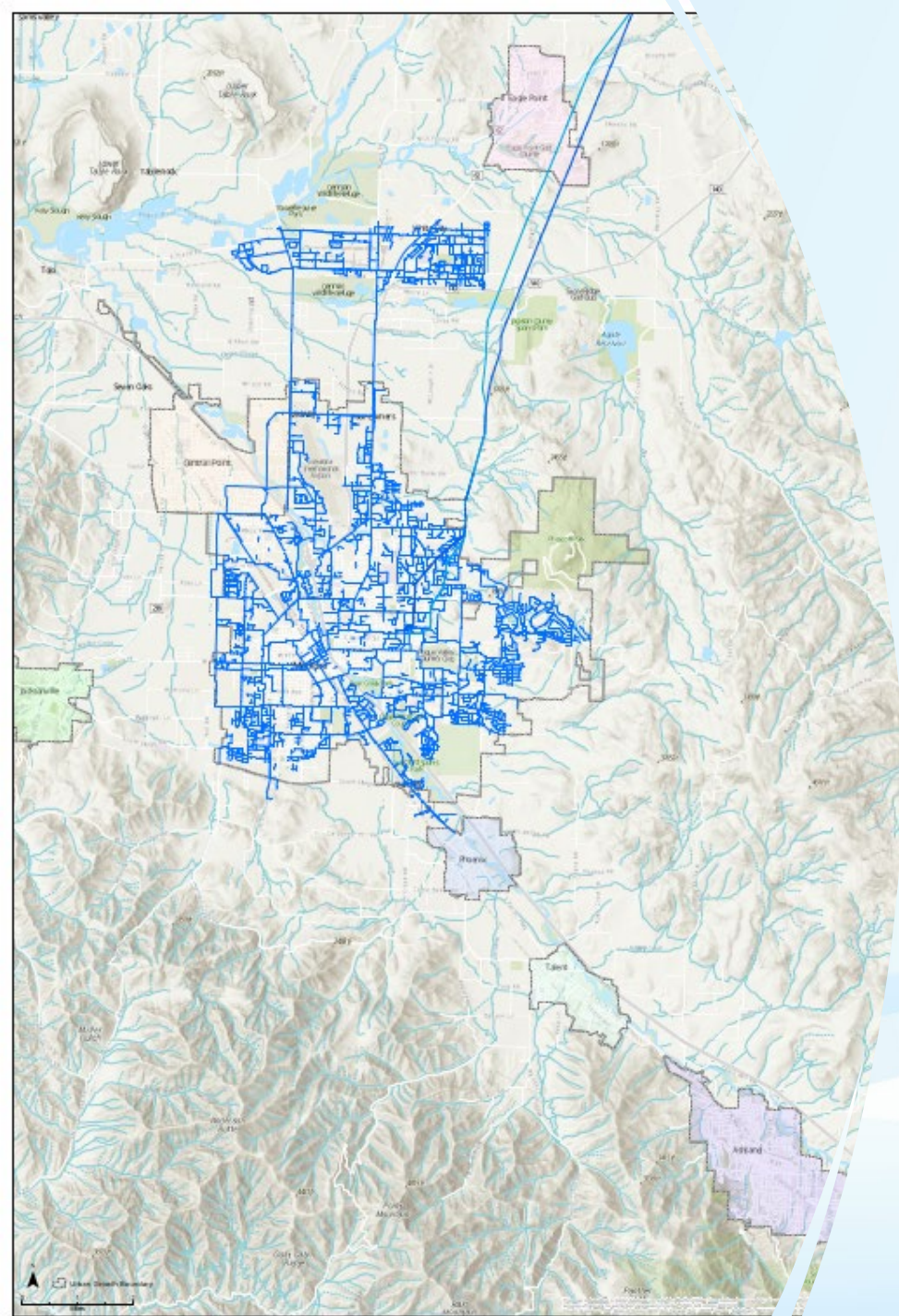
RESPECT. For everyone.

To safeguard public health by providing a reliable, high-quality water supply at the best value.

Map of Medford's System

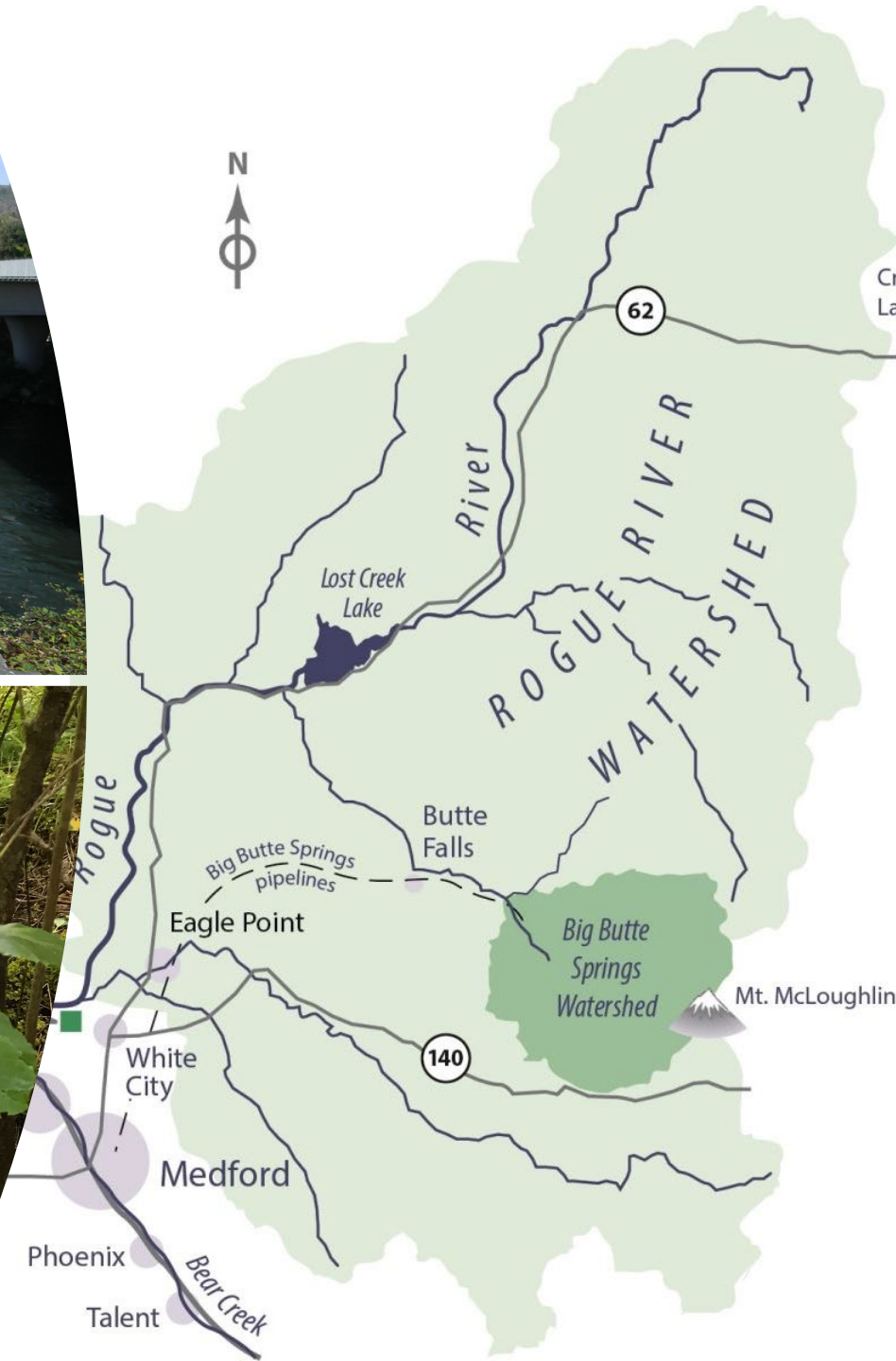
Medford Water provides water service to:

- City of Medford
- Unincorporated community of White City
- The Cities of Central Point, Eagle Point, Jacksonville, Phoenix, Talent, and Ashland are served on a surplus, wholesale basis
- Charlotte Ann Water and Elk City Water Districts



Water Sources

- Medford Water has two sources: **Big Butte Springs** in Butte Falls, and the **Robert A. Duff Water Treatment Plant** on the Rogue River.



By the Numbers



> **500** miles of pipelines



11,798 valves



4,523 fire hydrants



16 covered reservoirs storing over 36 million gallons



14 pump/pressure control stations



10 pumping zones



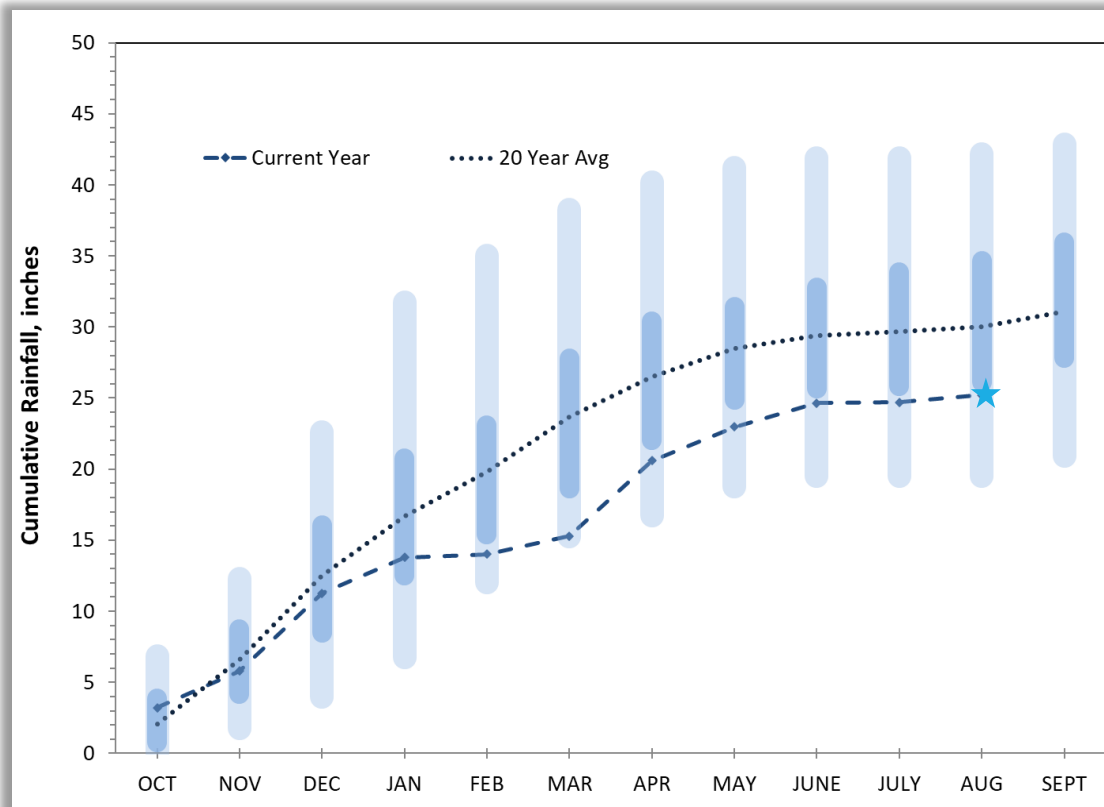


**DROUGHT AND
WATER SUPPLY**

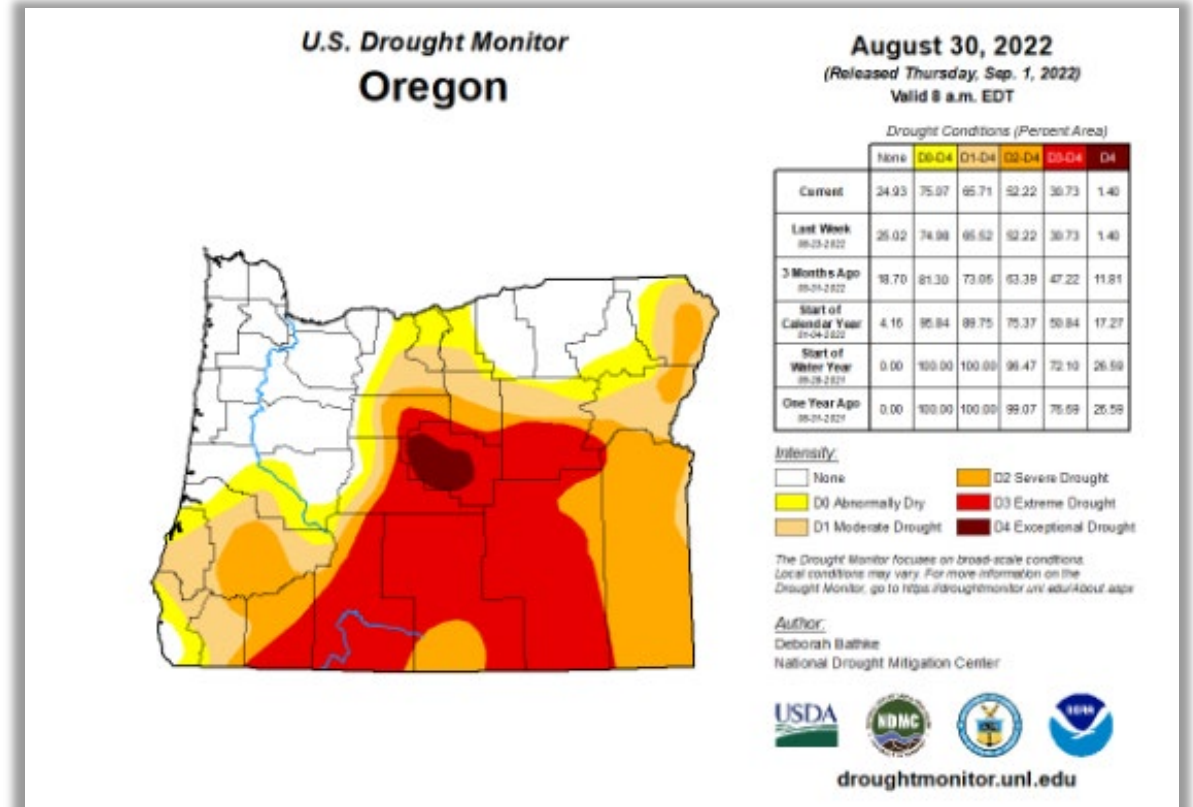


Watershed Precipitation

Precipitation at BBS (83% of average)

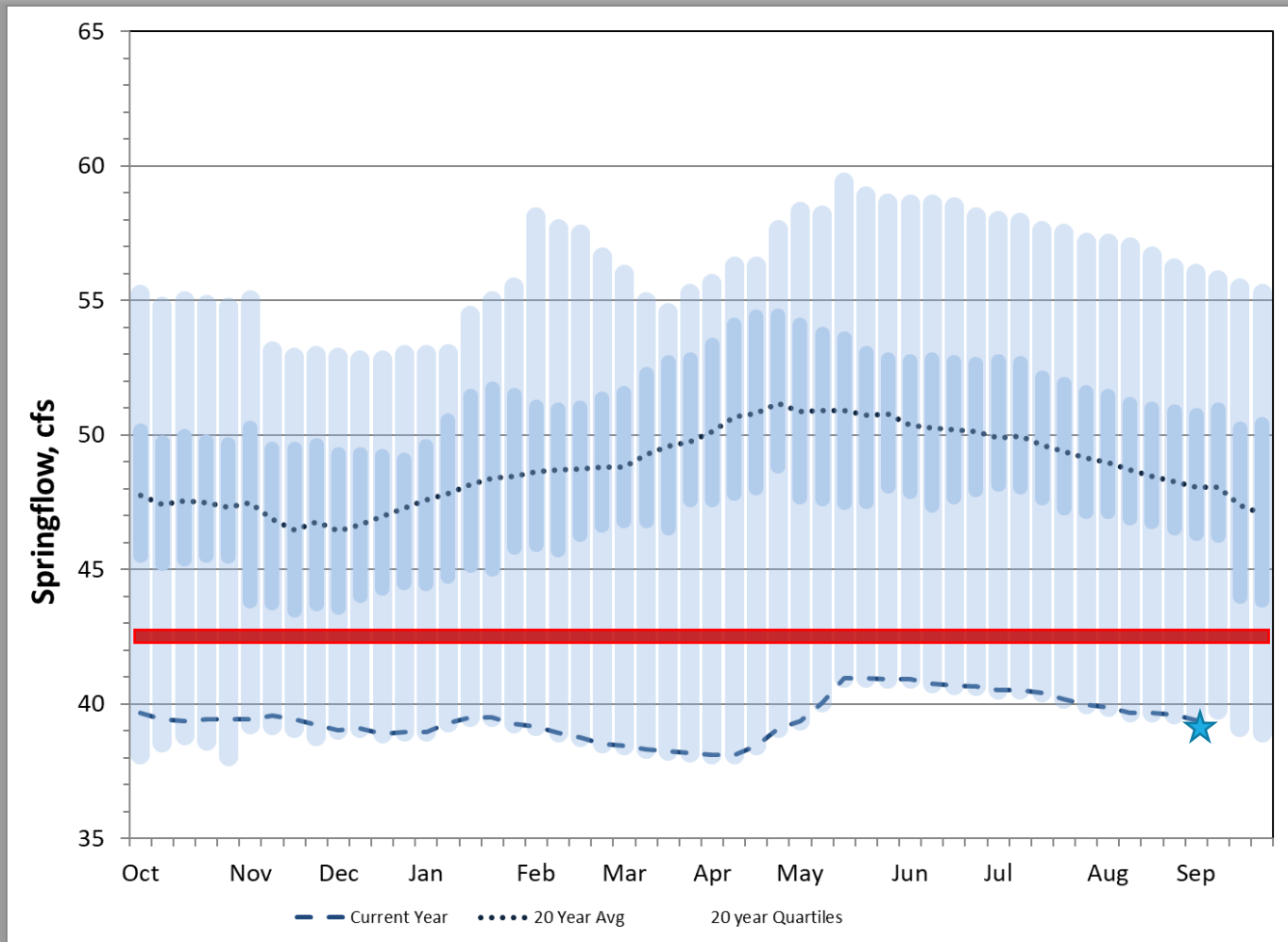


State-wide drought monitor



Springflow

New historical minimums set each week

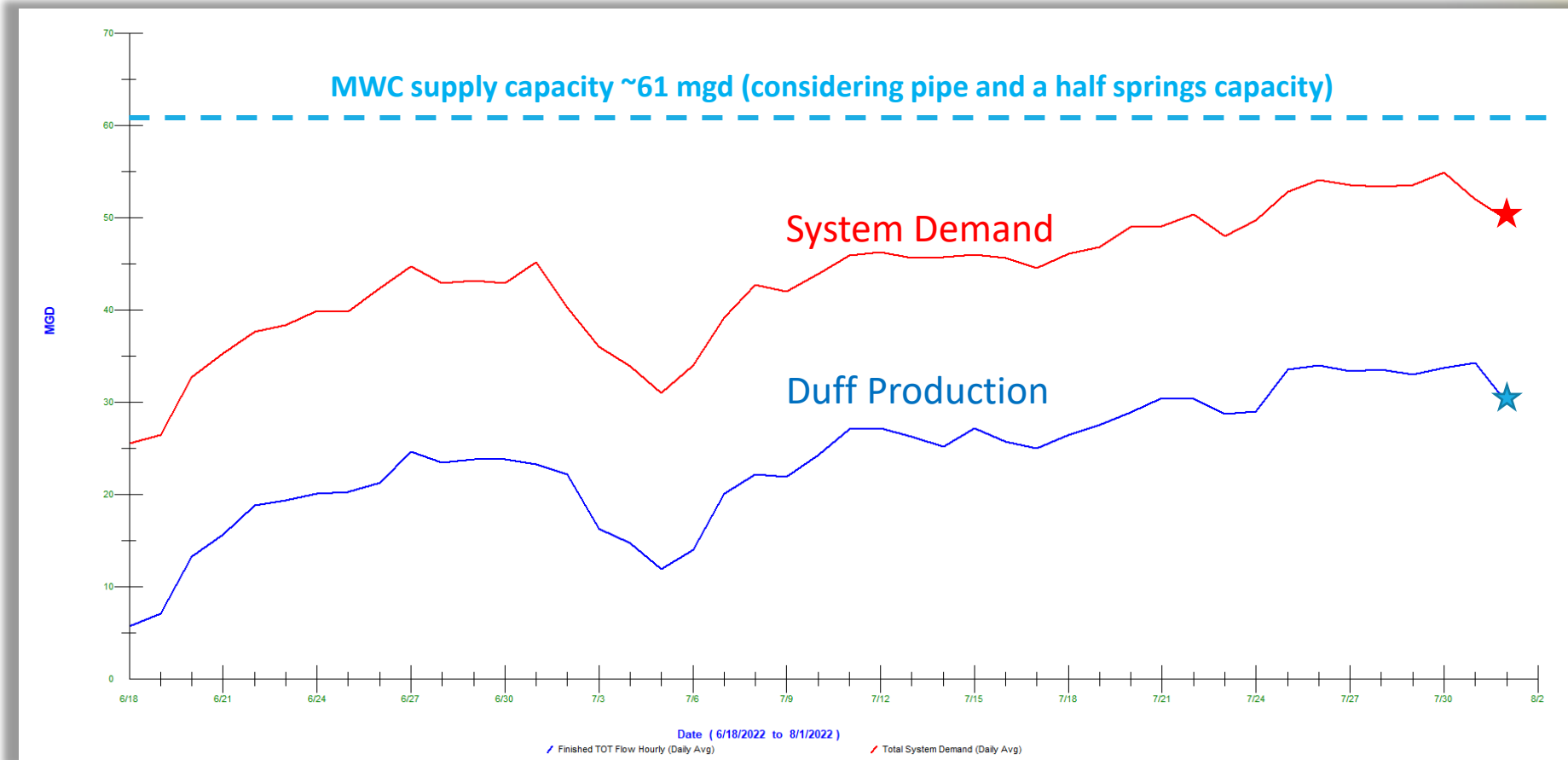


← Minimum flow for 2 full pipes



Water System Demands

- Average winter daily demand: 17 MGD
- Average summer daily demand: 47 MGD
- Peak consumption: ~60 MGD
- Peak day normally early July



Forest Management Goals

Forest Management Goals

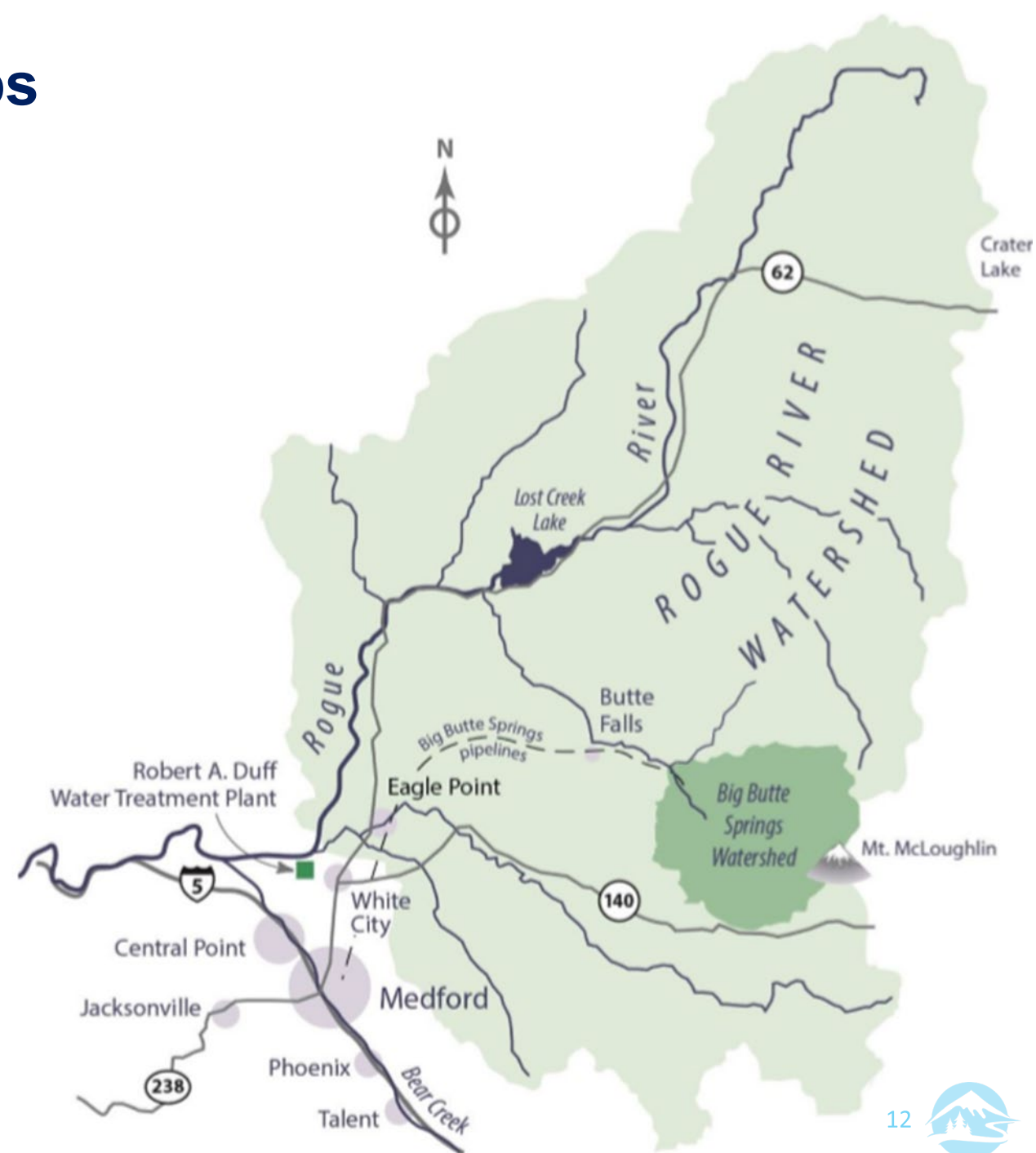
1. Create a forested landscape which supports the yield of a consistent source of high-quality, cool and clean water.
2. Reduce the risks of and increase the resiliency to wildfires.
3. Improve and maintain forest health with ecological integrity and resiliency.
4. Create financial sustainability whereby revenue-generating activities are used to offset non-revenue generating activities over the long term.

Common Interests

Work to encourage the use of similar forest management practices by other landowners.

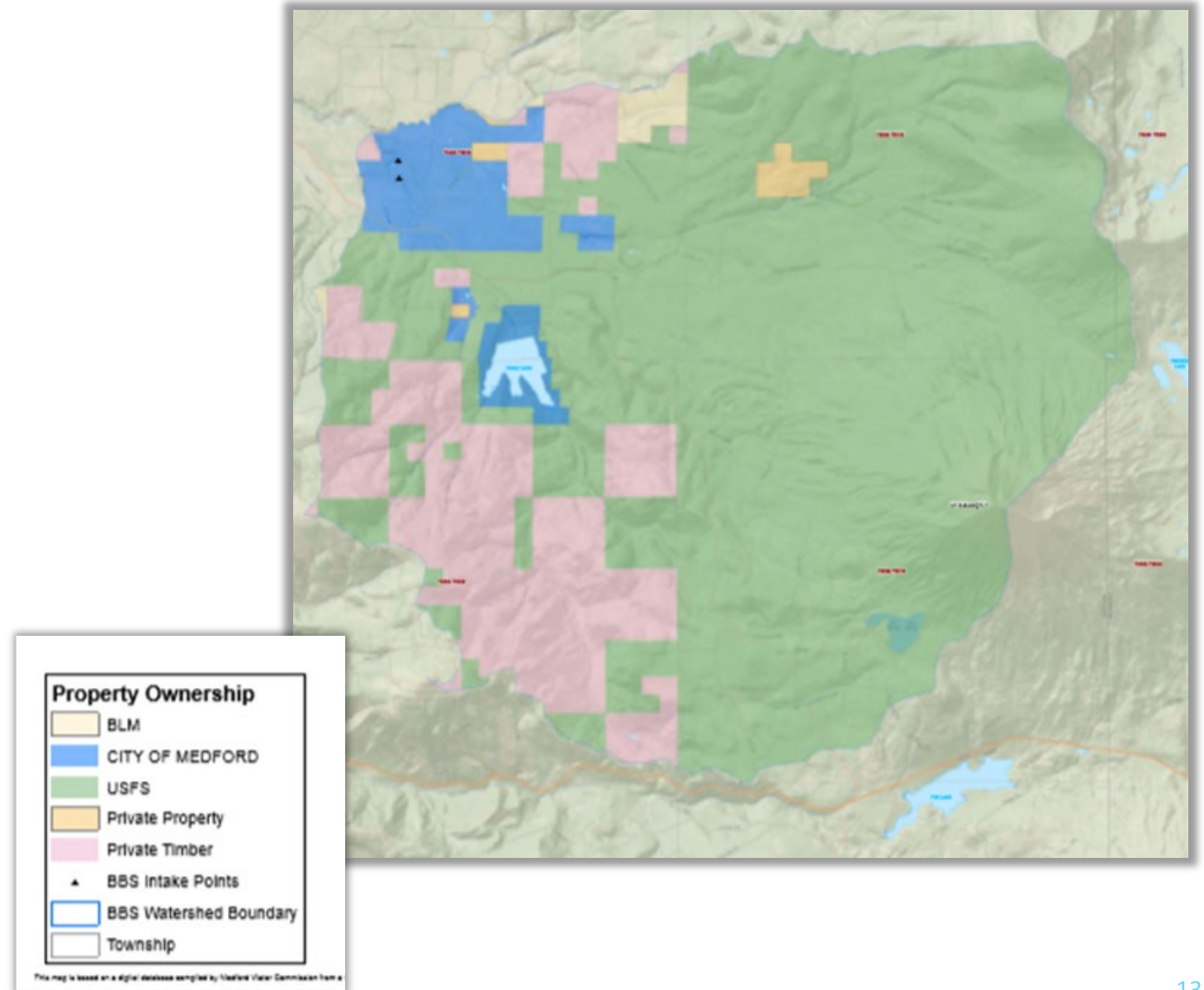
Forest Management Partnerships

- **Rogue River Watershed 1 million acres**
 - U.S. Forest Service owns and manages 42%
 - Stella project will implement forest management on 50,000 acres near Crater Lake
- **BBS Watershed 56,000 acres**
 - USFS owns and manages 75% of watershed
 - USFS proposing 25,000-acre forest treatment project (Snowy Butte)
 - Medford Water and partners working to bring needed resources to maintain the project size
- Medford Water is working with USFS on an agreement to allow increased partnership and project execution on our bordering lands



Forest Management Partnerships

- Active forest management is needed across lands owned by USFS, BLM, Jackson County, City of Butte Falls, Medford Water, and private landowners
- Medford Water is working with partners to bring grant dollars and other resources to treat thousands of forested acres in the Big Butte Springs and Rogue River watersheds.





**10-YEAR CAPITAL
PLAN**



Water System 10-Year Capital Improvement Plan

- Rogue Valley Water Supply Resiliency Program (~\$200 Million)
- Renewal and replacement of distribution piping (~\$12 Million)
- Distribution Pumping (~\$6 Million)
- Other (~\$10 million)





**ROGUE VALLEY
WATER SUPPLY
RESILIENCY
PROGRAM**

WIFIA
PROGRAM

Rogue Valley Water Supply Resiliency Program

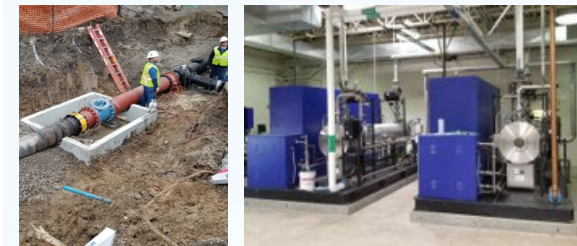
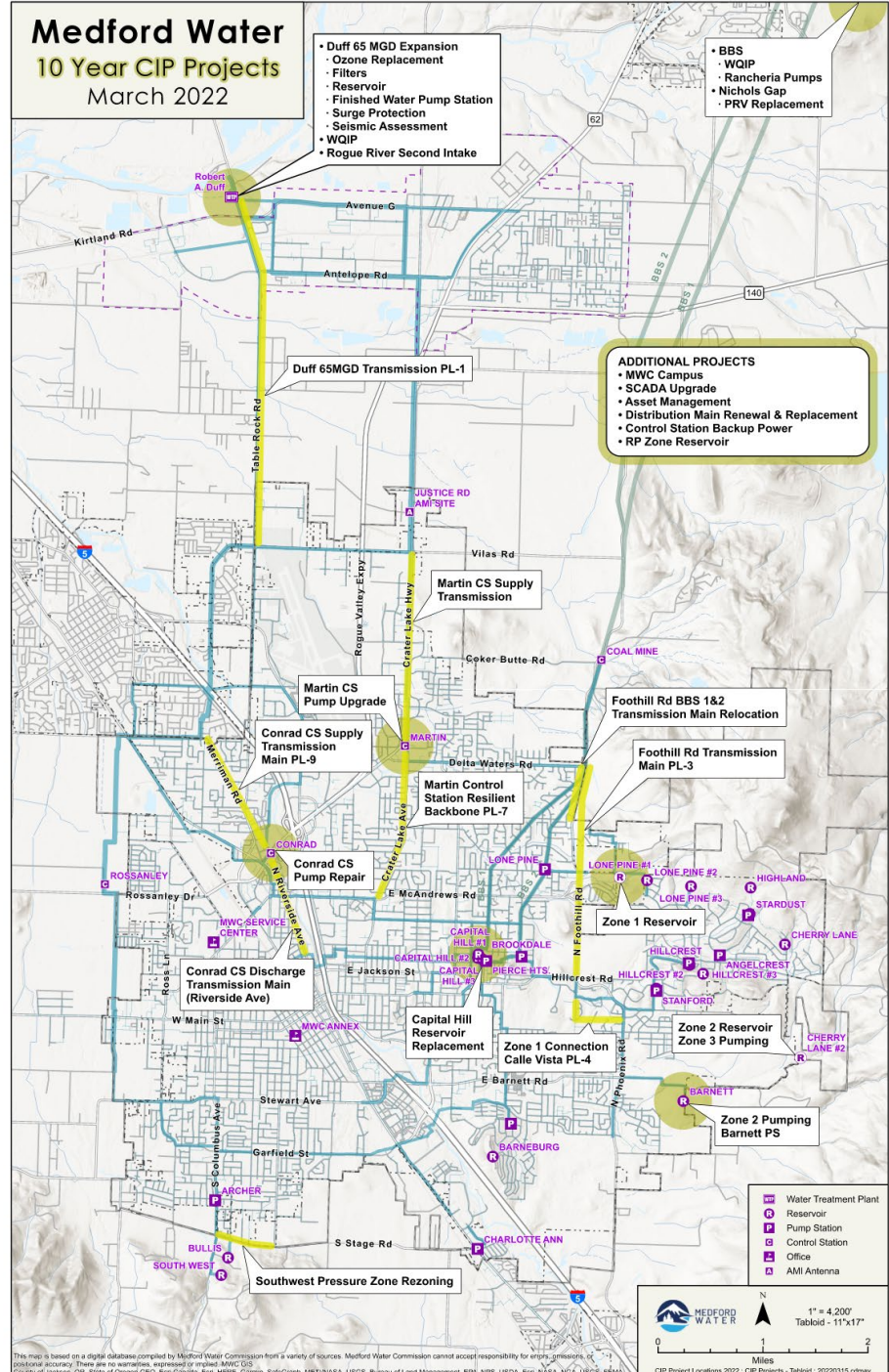
Purpose: To provide more resilient water supply system and increase water quality to meet the growing needs of the Rogue Valley and the requirements of the Oregon Resiliency Plan.

Total cost (in today's dollars): ~\$200 million

- Expansion of the Duff Water Treatment Plant (“Duff WTP”) and conveyance
- Water Quality Improvement Project at Duff WTP and Big Butte Springs
- Rebuilding Water Storage Facilities in gravity zone and conveyance
- New River Zone Reservoir and conveyance
- Medford Water Campus Facility



Water System 10-Year Capital Improvement Plan





THANK YOU

MEDFORD WATER

(541) 774-2430 | medfordwater.org

