

MINUTES

Capitol Planning Commission



Meeting Date: February 13, 2025

Time: 3:00pm – 5:00pm

Location: [Microsoft Teams](#) – In-person meeting cancelled due to weather

Attendees: Mike Abbaté, Jim Bauer, Chane Griggs, Jan Kailuweit, Jeremy Miller, Julie Hoy, Michael Slater, Daniel Christensen, Amy Krueger

Guests: Melissa Garner, Tracy Wilder, Peg Butler, Lori Friesen

Board Administration

Call to Order/Roll Call –

- 3:03 Meeting called to order. Roll called – Quorum reached.
- Mayor Hoy introduced herself and commissioners introduced themselves to the group.

New Business

CPC Administration/Elections –

- Daniel Christensen explained the process and expectations of the chair and vice chair.
- Jim Bauer nominated Mayor Hoy as chair. Chane Griggs seconded. No other nominations.
- Chane Griggs moved to call the vote for Mayor Hoy to be nominated for chair.
- Motion passed unanimously.
- Chane Griggs moved to nominate Jim Bauer as Vice-chair. Mike Abbaté seconded. No other nominations.
- Chane Griggs moved to call the vote for Jim Bauer to be nominated for vice-chair. Mike Abbaté seconded.
- Motion passed unanimously.
- Jim Bauer called for the vote for Mayor Hoy to be chair and himself to be vice-chair.
- Vote passed unanimously. Mayor Hoy elected Chair; Jim Bauer elected Vice-Chair.

Executive Building Art Installation Overview – Peg Butler presenting

- Peg Butler shared the art process overview for the Executive Building selection process.
- See recording for presentation and examples of art and how the artists were chosen.
- Mike Abbaté and Peg Butler will connect regarding the art design moving forward. Daniel will facilitate the connection.
- Jeremy will evaluate the statute regarding CPC having a voting position on art selection committees and bring back the results to the commission.

DAS Active Projects –

- Labor and Industries Building – has been approved by the Governor and is now working through the legislative process for funding.
- Yellow Lot – funded to pave the lot which will improve ADA access and EV charging.

- Michael Slater asked if there is a reason to keep a parking lot when there are a lot of folks working remotely? Is there a better use of that land than parking?
 - Jeremy stated this falls within the Governor's requirement to provide EV parking and improves ADA accessibility, especially with "return to office" becoming more prevalent.
- Michael asked if the impact of heat and drainage being taken into account?
 - Jeremy stated yes, there will be bio-swales and trees, and all the city ordinances will be followed in regards to green space and heat and drainage.
 - Jeremy will reach out to Commissioner Slater when the planning begins.

Area Plan Development –

- Daniel shared the list of area plan projects. Information can be found in binders that will be passed out in the next in-person meeting.
- Daniel explained the past planning process, missing pieces, and how the process can be improved moving forward.
- Agency is responsible for creating the plan according to the process and CPC has input with those plans.
 - DAS leads the project and works with the agencies in the buildings, and CPC comes along side to make the projects more accessible to not just the State, but also the city and the general public.
- One thing missing from the "planning process" is design standards. Not just in buildings, but also roads and other pieces.
 - Commissioners are requested to review and bring back other "missing pieces" that they'd like to see in future planning process.
- Daniel shared an outline of how to make the planning process more standard throughout this year's work sessions.
- One potential stakeholder could be neighborhood associations.
 - Neighborhood associations are on the communication lists, but we can do additional outreach.

Other Issues

- Public Comment – None.
- Adjourn – Meeting adjourned 4:25.

Next meeting:

April 3, 2025

3:00pm – 5:00pm

Fremont Conference Room, DAS Executive Building, 155 Cottage St. NE, Salem

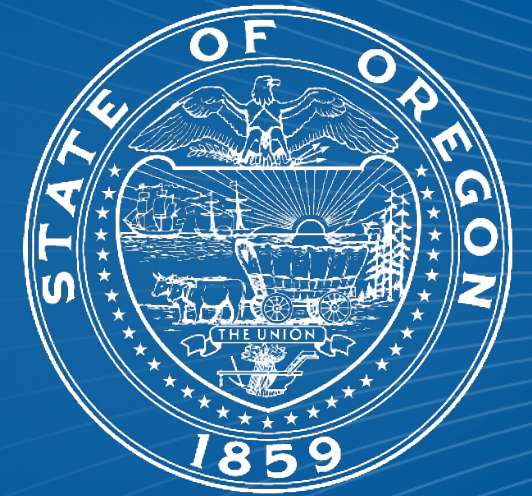
Department of Administrative Services



Capitol Planning Commission
February 13, 2025

Agenda

- 01** Officer Elections
- 02** DAS Executive Art
- 03** Area Planning Process



Officer Elections



Nominations

- Chair – Two-Year Term
- Vice Chair – Two-Year Term

Expectations

- Attend meetings
- Maintain meeting order and productivity
- Interpret and enforce administrative rules
- Coordinate with DAS staff on procedures
- Serve as primary CPC representative

Executive Building Art



Peg Butler

Public Art Consultant / Project Manager

Active Projects Summary



Jeremy Miller

DAS Capital Planner/EAM Deputy Administrator

Area Plans



Current Area Plans*

- [Airport Road Area Plan](#)
- [Capitol Mall Area Plan](#)
- [Oregon School for the Deaf](#)
- [Oregon State Hospital and Penitentiary Properties Area](#)
- [Southeast Salem Area](#)
- [State Fair and Exposition Center Area](#)

*External Links to Plan Documents

Planning Process



Strategy

- Initiate update process by focusing on one area plan to develop criteria
- Revise plan development process and development criteria
- A policy framework for development
 - Control (Standards)
 - Action
 - Priority

Planning Process



Existing Plan Template (2007)

1. Introduction
2. Site Data
3. Development and Management Policies
4. Design Standards
5. Land Use Plan

- Location
- Existing Development and Current Conditions
- Surrounding Community Development
- Infrastructure
- Transportation and Circulation
- Comprehensive Plan Designation and Zoning
- Natural Resources

Planning Process



What's Missing?

- Relationship to Agency Strategic Vision
- Scenario Modelling/Trend Analysis
- Utilization/Capacity
- Facility Condition
- Risk/Hazards Assessment
- Site Synergy
- Cultural Resources

Planning Process



Plan Development Criteria – DAS (Draft in April 2025)

- *CPC Review*

Plan Development Manual – DAS

- *CPC Review*

Capitol Mall Planning – DAS

- *CPC Engagement*
- *CPC Review*
- *CPC Adoption*



Department of Administrative Services

Executive Building, Salem, Oregon

Percent for Art Process / Artist Concept Proposals

For presentation to the Capitol Planning Commission on Thursday, February 13, 2025

Peg Butler, Public Art Consultant, Percent for Art Project Coordinator on behalf of Oregon Arts Commission



Percent for Art Process Overview for the Executive Building Selection Process

- The Selection Committee process began in October, 2023, with 9 voting and 2 non-voting members.
- The budget set aside for artwork acquisitions was \$302,000
- Three artists/artist teams were selected for commissions through a request for qualifications and artist interview process.
 - Lillian Pitt and Team were awarded a commission of \$90,000 for an interior commission.
 - Sara Siestreem was awarded a \$32,000 commission for an interior lobby commission.
 - WaKanim Artist Collaborative was awarded \$180,000 for an exterior commission.

Request for Qualifications - Art in Public Places Opportunity

Department of Administrative Services, Executive Building, Salem, OR



Figure 1 - Executive Building, west entrance.

The Oregon Arts Commission is accepting qualifications from artists or artist teams for Percent for Art in Public Places opportunities at the Department of Administrative Service (DAS) Executive Building. The Executive Building is undergoing a full renovation, while maintaining and restoring historic elements of the building and the recently remodeled lobby. The building is scheduled to reopen in Spring of 2024, but artwork will be expected to be installed by Spring, 2025.

Submission Deadline: 5 p.m. Pacific Time on Monday, March 25, 2024.

Eligibility: Open to artists who reside in Oregon, California, Washington, Alaska, Idaho and Montana. Artists from traditionally or currently underserved communities including (but not limited to) rural communities and communities of color are especially encouraged to apply.

Budget: The anticipated art budget for the project is \$270,000 total, which will be allocated to two commissions: an interior and an exterior commission. The budget for the interior commission is \$90,000; for the exterior, it is \$180,000. Budgets include artist fees, travel expenses, materials, engineering, permitting, fabrication, insurance, shipping, installation, documentation and any other project costs.

About the Department of Administrative Services and the Executive Building Project

The Department of Administrative Services is the central administrative agency of Oregon state government. DAS's mission is to "support state government to serve the people of Oregon." DAS works to effectively implement the policy and financial decisions made by the Governor and the Oregon State Legislature. DAS also sets and monitors high standards of accountability to ensure state government uses tax dollars effectively. To fulfill its mission, DAS supports state agencies by providing a strong and stable management infrastructure. As part of this effort, DAS works with private enterprise, citizens and other government entities to develop an efficient service delivery system.

The Executive Building was built in 1936 to serve as a post office. In 1978 it was expanded, resulting in a 63,000 square-foot, five-level building with a two-level parking garage. The building is now home to the State of Oregon's Chief Operating Office (COO), Chief Human Resource Office (CHRO), Chief Financial Office (CFO), Enterprise Information Services (EIS), and the Office of Cultural Change. The renovated building will be a haven for employees, with a pleasant and inclusive environment, and also be welcoming to the general public by providing for unique possibilities to build community and connection for groups within Salem, and those who may be visiting the area to collaborate with state government.

Potential Themes, Values and Goals for Artwork

- Confluence - coming together while retaining autonomy.
- Indigenous present and future, a connection to deep history of place (geologic time).
- Inclusivity, equity, justice, accessibility to democracy, creating connections across communities.
- Thought provoking, inspires curiosity and openminded inquiry, creates pathways for reflection and learning.
- Future-oriented possibilities, less memorializing and more world-building.
- Reflects upon Oregon's natural environment.

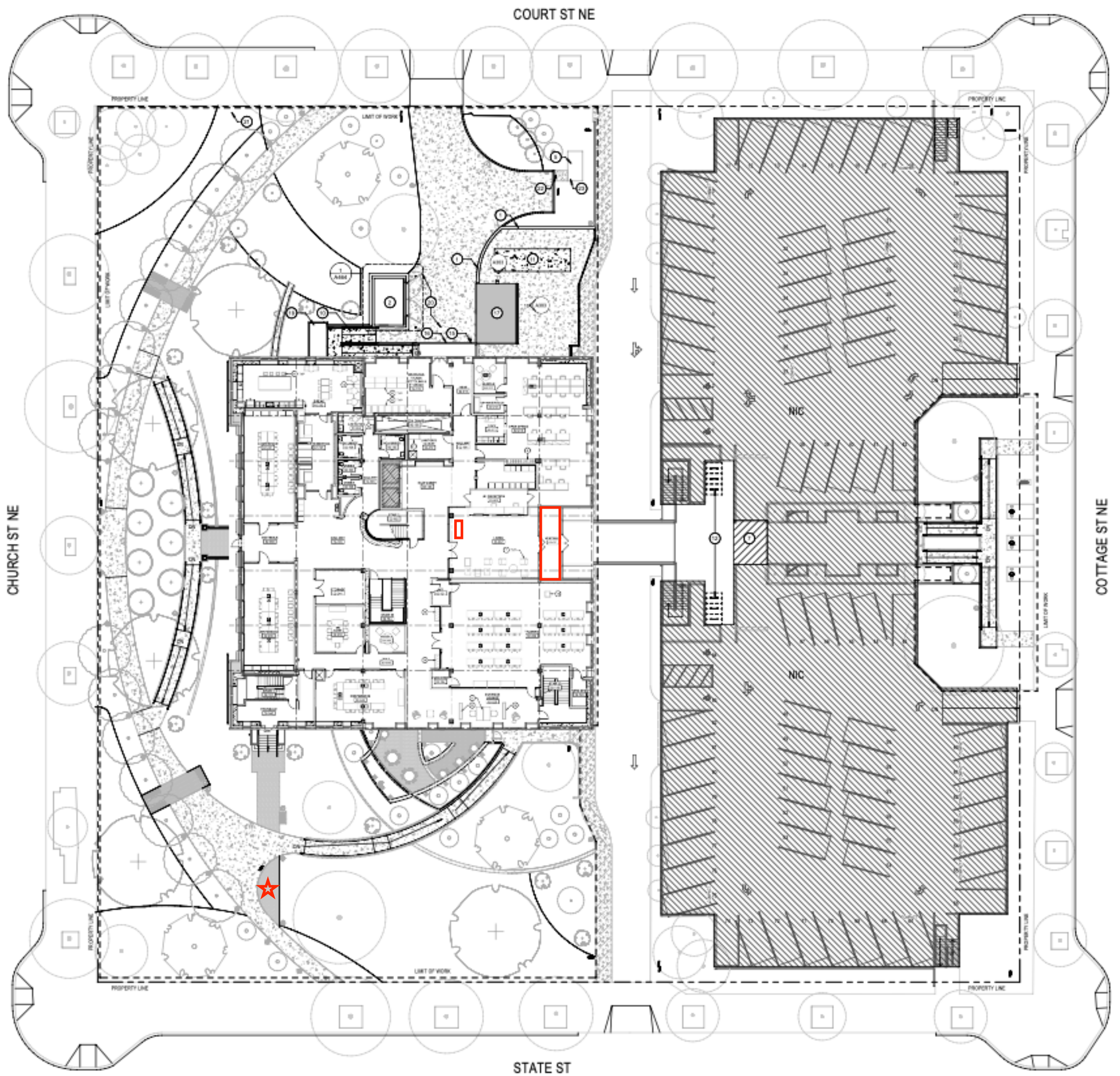
Art Locations

There are two art zones for the Executive Building. Images of the potential art locations are in the final pages of this document.

- 1) Interior - Level 1, east entrance vestibule: ceiling-suspended 3D art or wall attached 2D art; 2D art for the north conference room wall.
- 2) Exterior - South and west landscape, various locations.

Selection Process

A selection committee for this project includes DAS representatives, building users, arts professionals and the project design team, and is facilitated by an Oregon Arts Commission project manager. The committee will review submitted qualifications and select up to three finalists per zone for an interview selection process.



A handwritten signature in black ink, appearing to read 'Lillian Pitt', with a stylized flourish at the end.

DAS Executive Building
Concept Presentation

Lillian Pitt, Juno Lachman & Ben Dye

January 27, 2025

Project Narrative: Heritage

For thousands of years, the Columbia River Gorge was home to my ancestors —until the 1800s when the government forced us onto reservations.

Celilo Falls provided a never-ending supply of food, especially our sacred salmon.

Although I was born on the Warm Springs reservation, my family fished at Celilo Falls until 1957 when construction of the Dalles Dam inundated the falls.

My art often features themes reminiscent of this heritage. I like to remind people of our shared connection to nature and to the land.

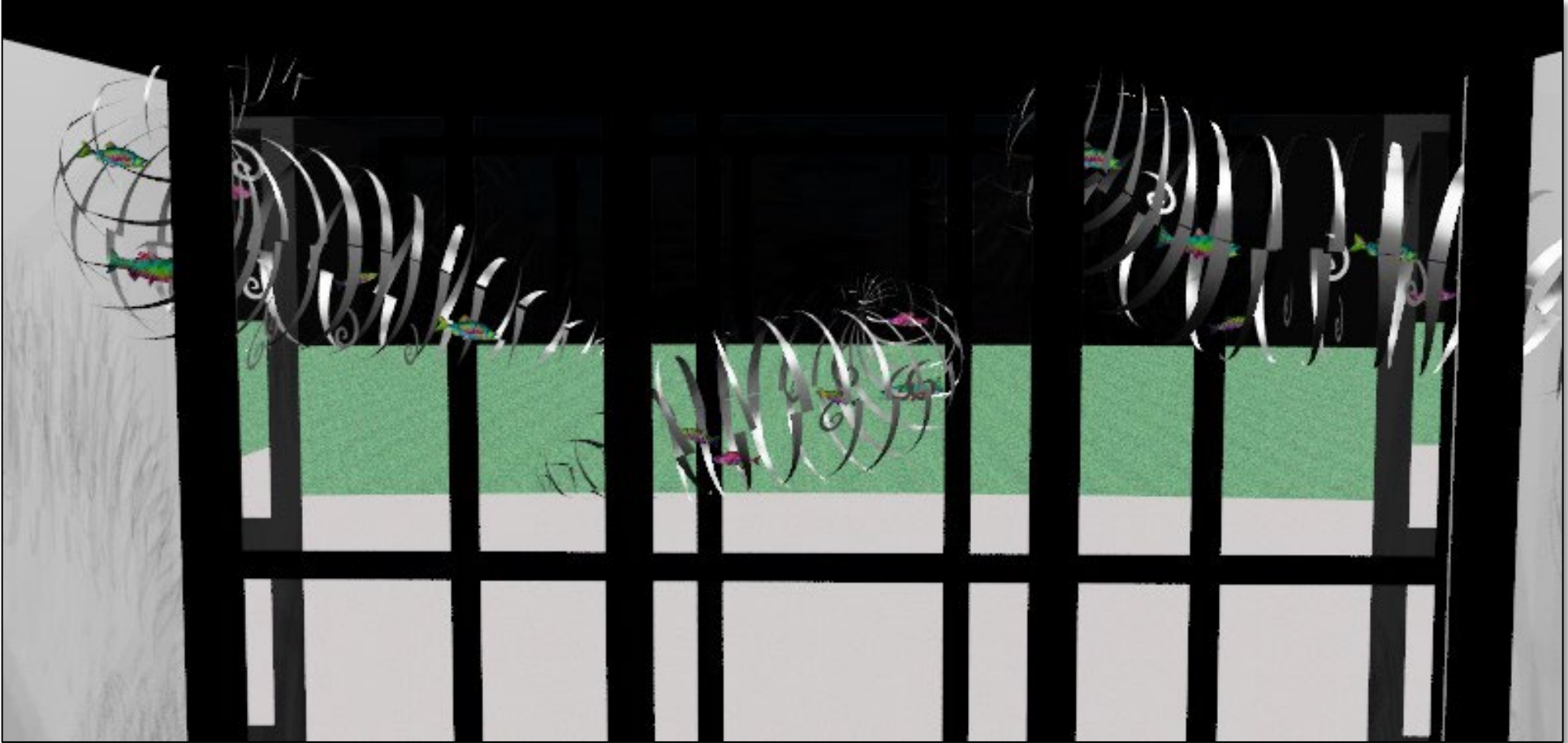


Dip net fishing at Celilo Falls

Exterior View

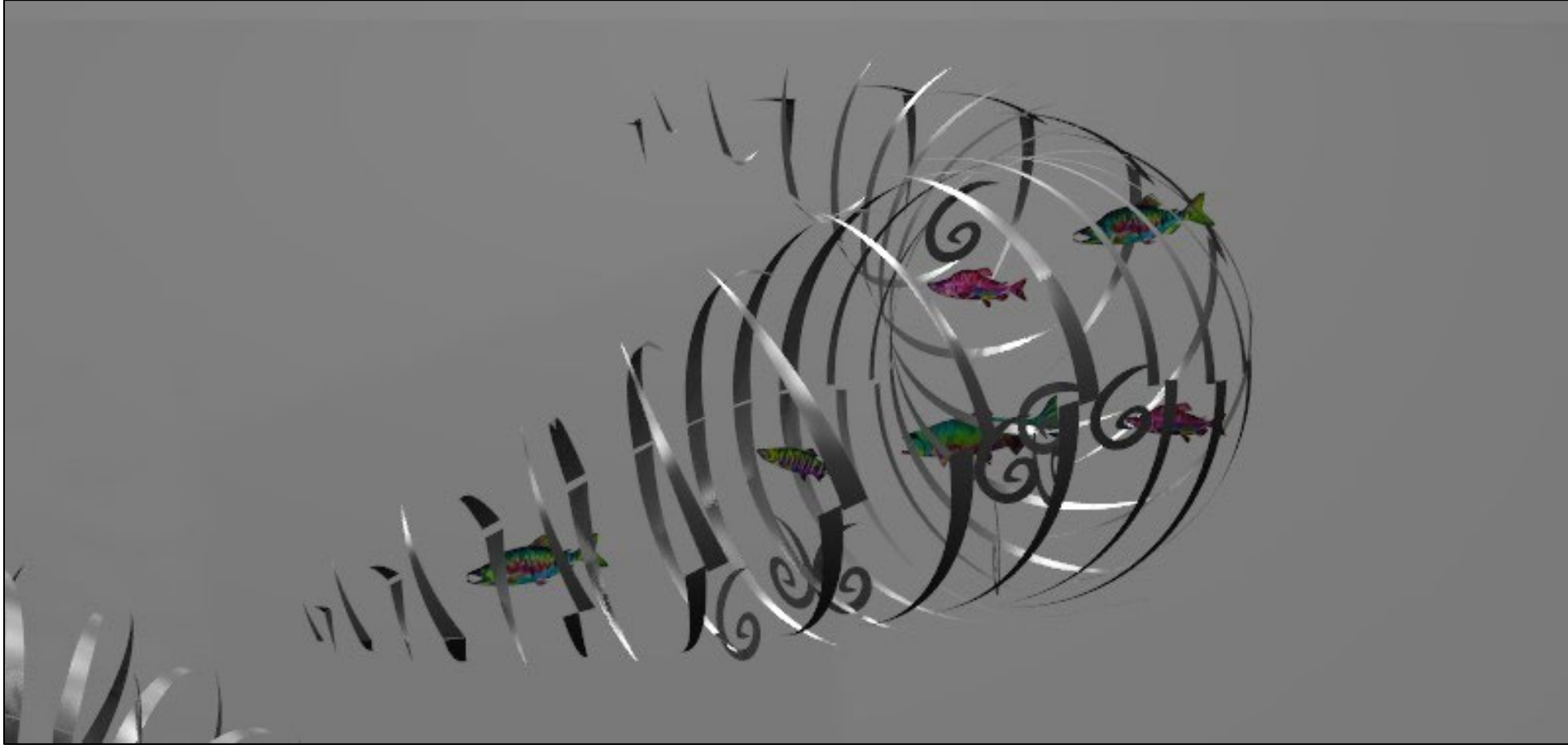


Concept Drawing: Inside the Vestibule



Three hanging pods create a dynamic viewer experience with multiple vantage points.
Each pod is 12' x 8' x 8'; Suspended with cables

Concept Drawing: Elevation View



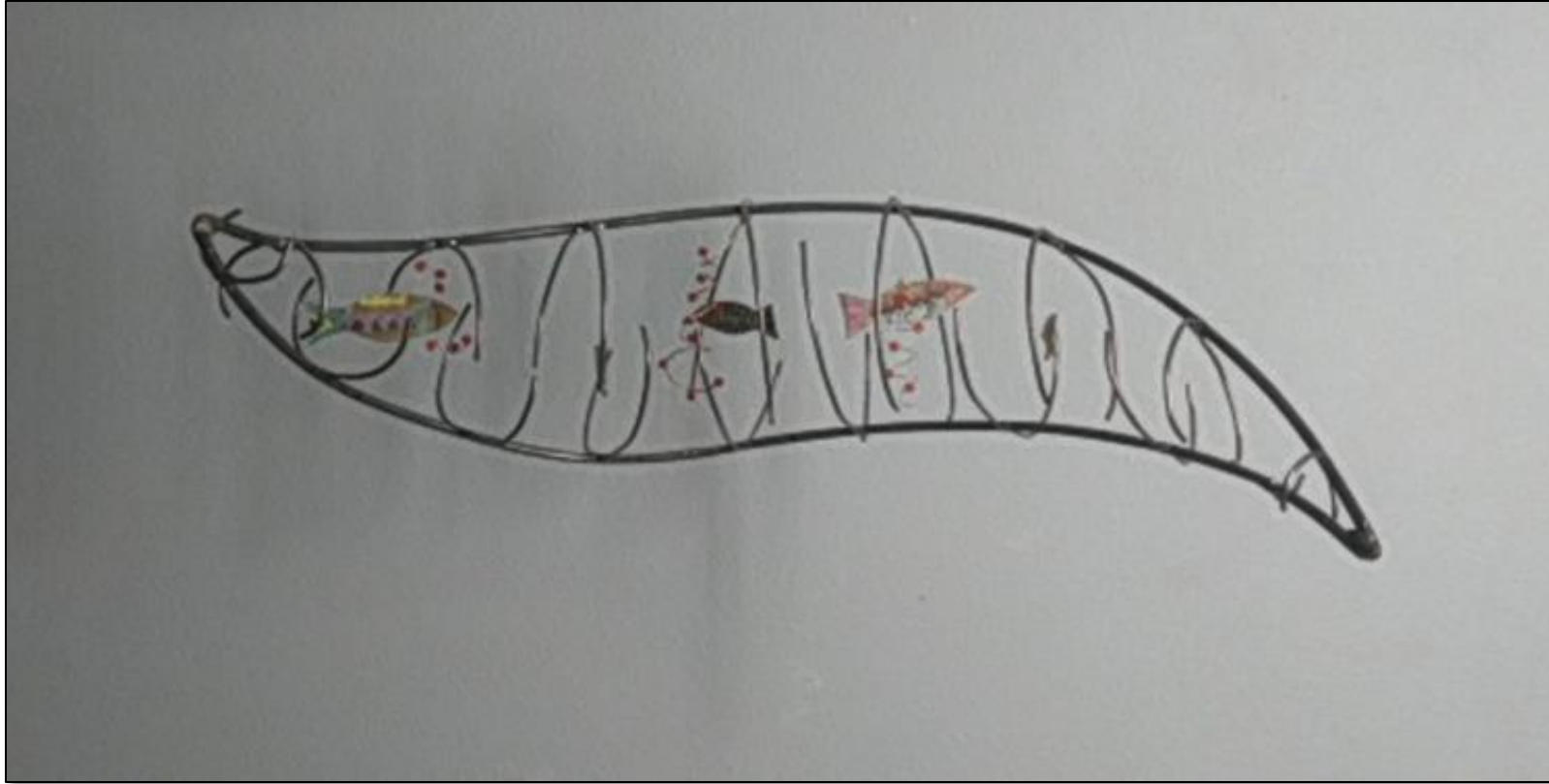
Each pod hosts a vibrant ecosystem where light and movement evoke underwater life.
Each pod includes five fish and multiple smaller elements.
Durable, lightweight materials ensure structural integrity.

Front View

Measurements, pending approval:

Pod: 12' long x 4.5' wide x 7' high

Fish: 16" long / Salmon eggs: 3/4" diameter



Proposed Fish Shape & Samples of Color Possibilities



SARA SIESTREEM (HANIS COOS)

DAS EXECUTIVE BUILDING ART PROJECT, SALEM, OR

Project Proposal





RESEARCH, 2023

Installation includes baskets and dance caps made in three different ways: hand-woven out of natural fibers, 3D printed with Nylon powder, and slip-cast in ceramic

36 x 12 x 62"

\$50,000

Top shelf (left to right):

here my dear (made in quarantine, to save your life), 2021-2022

**this one has to do with forest fires*, 2017-2022

cat skills (tends to infinity), 2007-2022

Upper-middle shelf (left to right):

up all night, 2018

ARETHA, 2022

ricky infinity t'x e'xect, 2016

Lower-middle shelf (left to right):

trans temporal dance cap (ARETHA FRANKLIN, reigns supreme), 2022

science fiction crawdad trap (we used to eat from the stream), 2016

petro glyph gesture, 2022

Lower shelf (left to right):

crab trap, 2017-2019

[ghost], 2022

trans temporal clam basket, 2022





(left to right)

crab trap, 2017-2019
Spruce Root from Jordan Cove, North Spit of
the Coos Bay Estuary
9.25 x 8 x 8"
\$9,000

[ghost], 2022
slip cast ceramic basket (unique)
8.75 x 8.25 x 8"
\$2,800

trans temporal clam basket, 2022
3D printed scan of a hand woven basket
(Nylon 12 Powder)
9.25 x 8 x 8"
\$4,800



milk and honey, 2024
glazed slip cast ceramic basket
8.75 x 8.25 x 8"
Edition 1/10
\$3,500



single jingle, 2024
glazed slip cast ceramic basket, acrylic paint and Xerox
transfer
8.75 x 8.25 x 8"
\$3,500



up all night, 2018

Red Cedar Bark (Kingcome, BC) gathered with Marianne Nicolson
(Dzawada'enuxw), Spruce Root (North Spit of Jordan Cove, Coos Bay,
OR), Mud Dye (the place of beginning, Coos Bay, OR)

8.5 x 7 x 6.5"

\$8,000



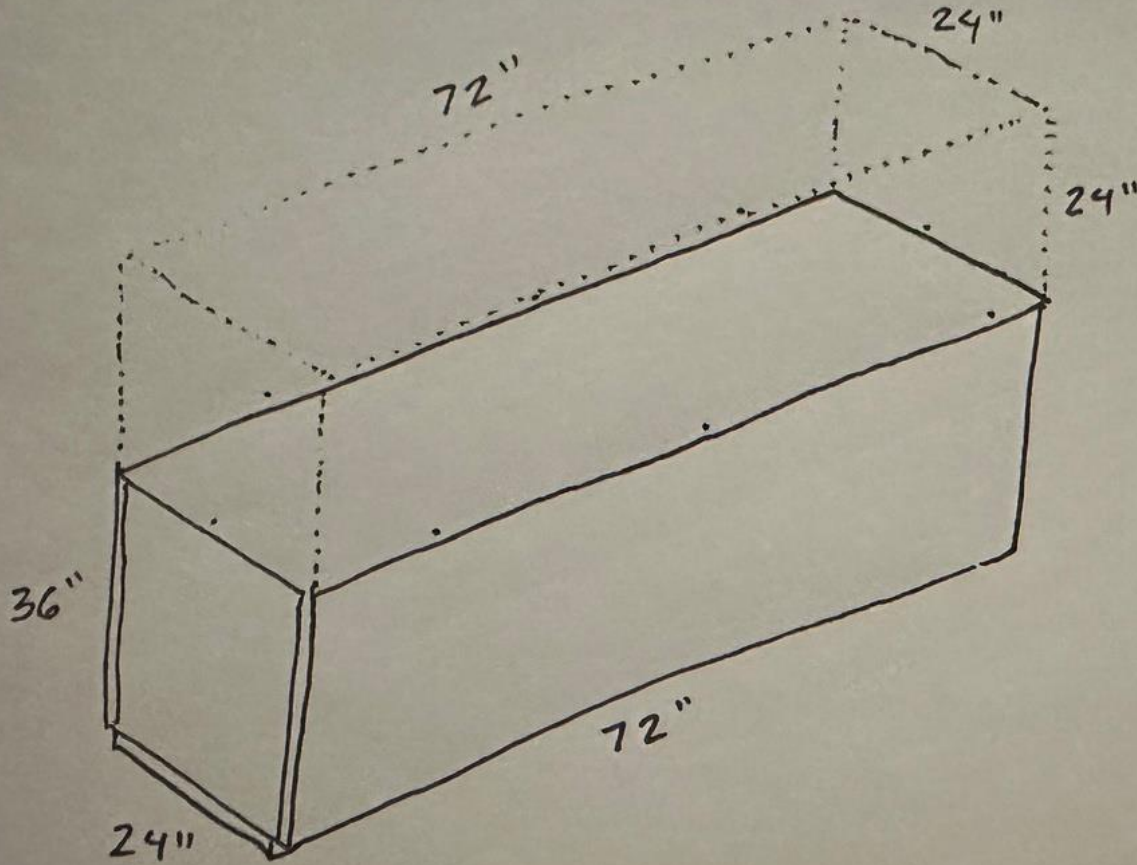
PLINTH AND COVER:

Natale Kirk (Warm Springs)
 ARROWHEAD Project at PNCA, 2023
Large Wapas, 2021
 Cotton, wool, copper yarn

PLINTH FOR BASKETS

$\frac{3}{8}$ " PLEXIGLASS TOP

$\frac{3}{4}$ " PREFINISHED BIRCH PLYWOOD



36"x23"x72" pre-finished birch plywood pedestal base

24"x 24"x72" plexiglass top

Estimate of Costs:

Plexiglass top	\$1,500
Optional mirrored plexi	\$300
Materials labor for plywood base	\$1,750
Delivery	\$750
Total	\$4,300

DAS Exterior Sculpture Concepts

Sketches and Inspiration

Earl Davis & Shirod Younker

DAS Exterior Art Proposal

Earl Davis & Shirod Younger

Project Narrative:

Coyote Releases The River

Santiam Kalapuya Myth, pg 135

Melville Jacobs Notes, UW digital library

Story Narrative

A Kalapuyan Story of frogs that built a dam to stop the river from flowing downstream so they could have a lake. Coyote seeing this injustice, tricks the frogs into letting him get a drink of water in exchange for a very large shell of dentalium (albeit faux) aka “Hiqua” is a variable sized shell that is used as currency denom according to length. While the frogs are mesmerized by the shell, Coyote dives to the base of the dam and digs furiously (also while drinking) to help the water escape. After the dam breaks the fish and other animals are then able to use the flowing river to upriver

Story Lesson

Don't keep all the resources for yourself aka “think of others & share”

Concept Drawings and Images

Coyote inspired by interior house posts in which carved or painted images would be displayed.

Materials: Wood (Either Western Red, Yellow or Port Orford Cedar) Dimensions: (est). 8'-9' height x 4" depth x 20"- 30" facial wide Material Base: Poured concrete.

Estimated dimensions round 12"-24" Height x 24"-36" width suggested location: SW corner exterior building at the slightly off the confluence of the two walking paths.

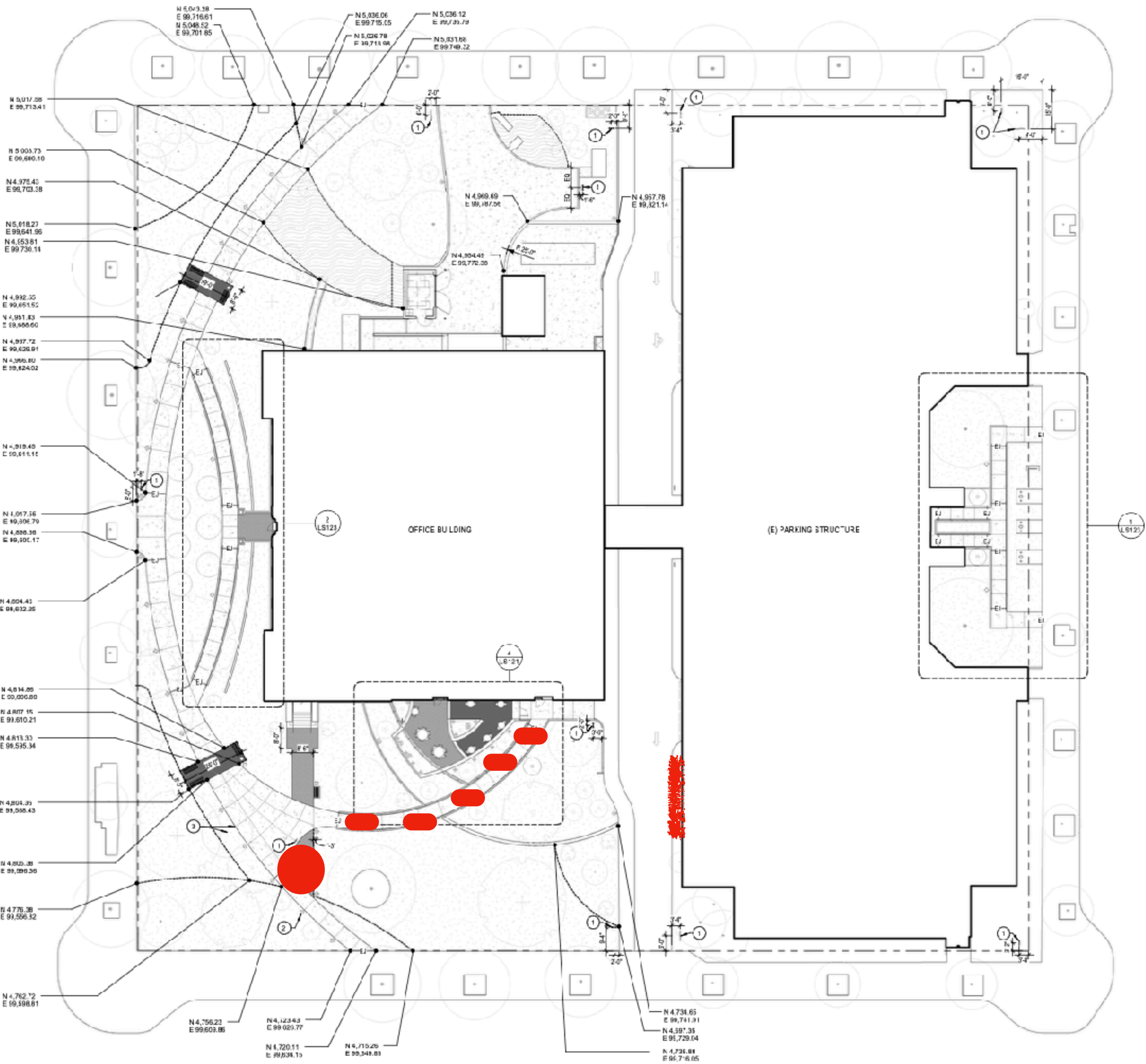
Frogs (5) inspired by carved interior house planks & **Dentalium**

Materials: Stacked (5) plasma cut Steel or Aluminum (powder coated) Dimensions: (est) 24"width x 18" height x 1"-1.5" (2 plates stacked) suggested location: SW corner of parking lot (facing south) attached to wall I looking at Coyote figure

Fish (5): low relief salmon, smelt, eel, sturgeon & TBT water animal

Materials: either cast bronze or milled & powder coated aluminum Dimensions: (est) 18" length x 2.5" width x 1"-1.5" height. suggested location(s): retaining walls located on the south side of the DAS building. Parallel to the ramp / landscaped area below the parking structure. Low relief designs inspired by anadromous fish of Oregon.

Proposed Locations

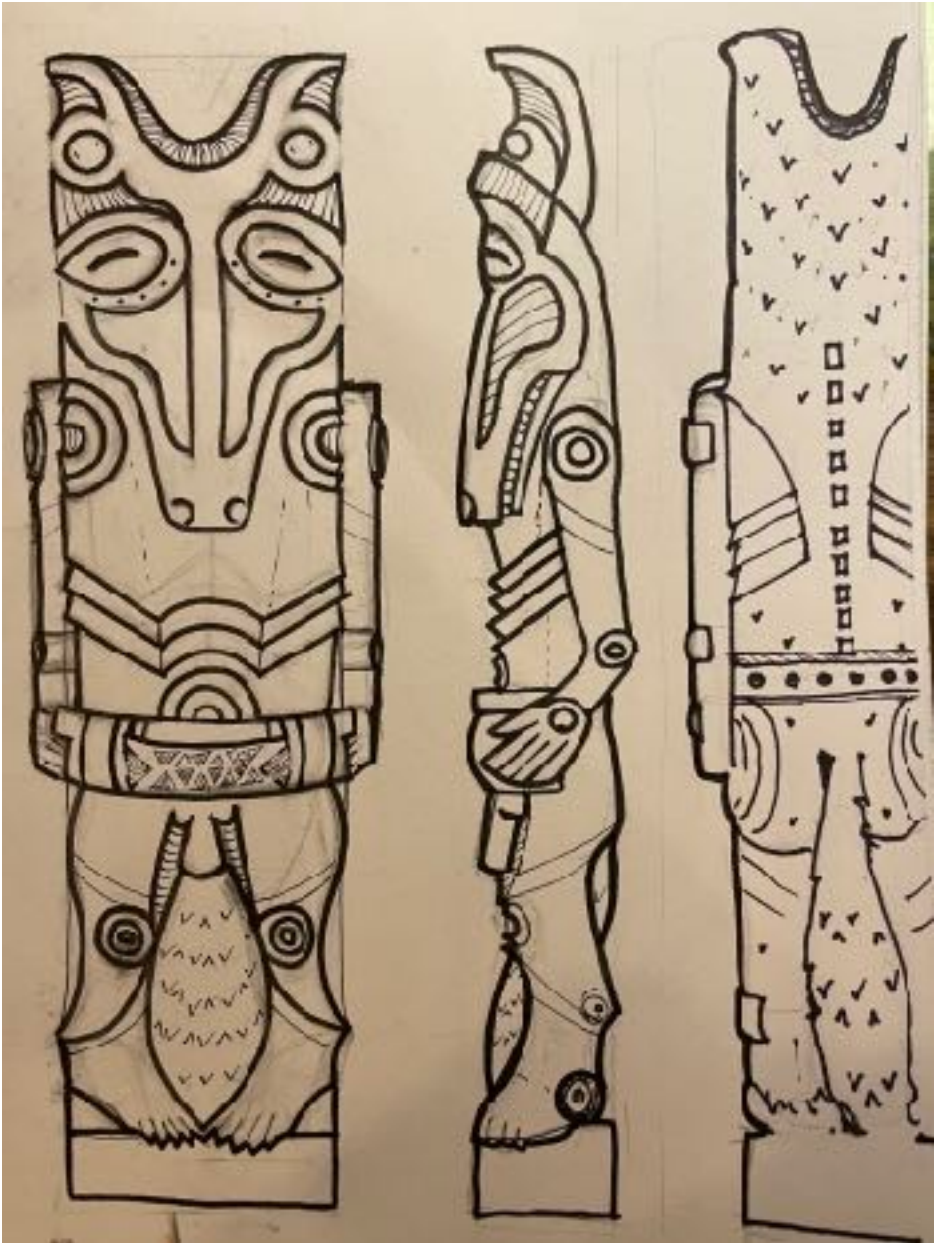
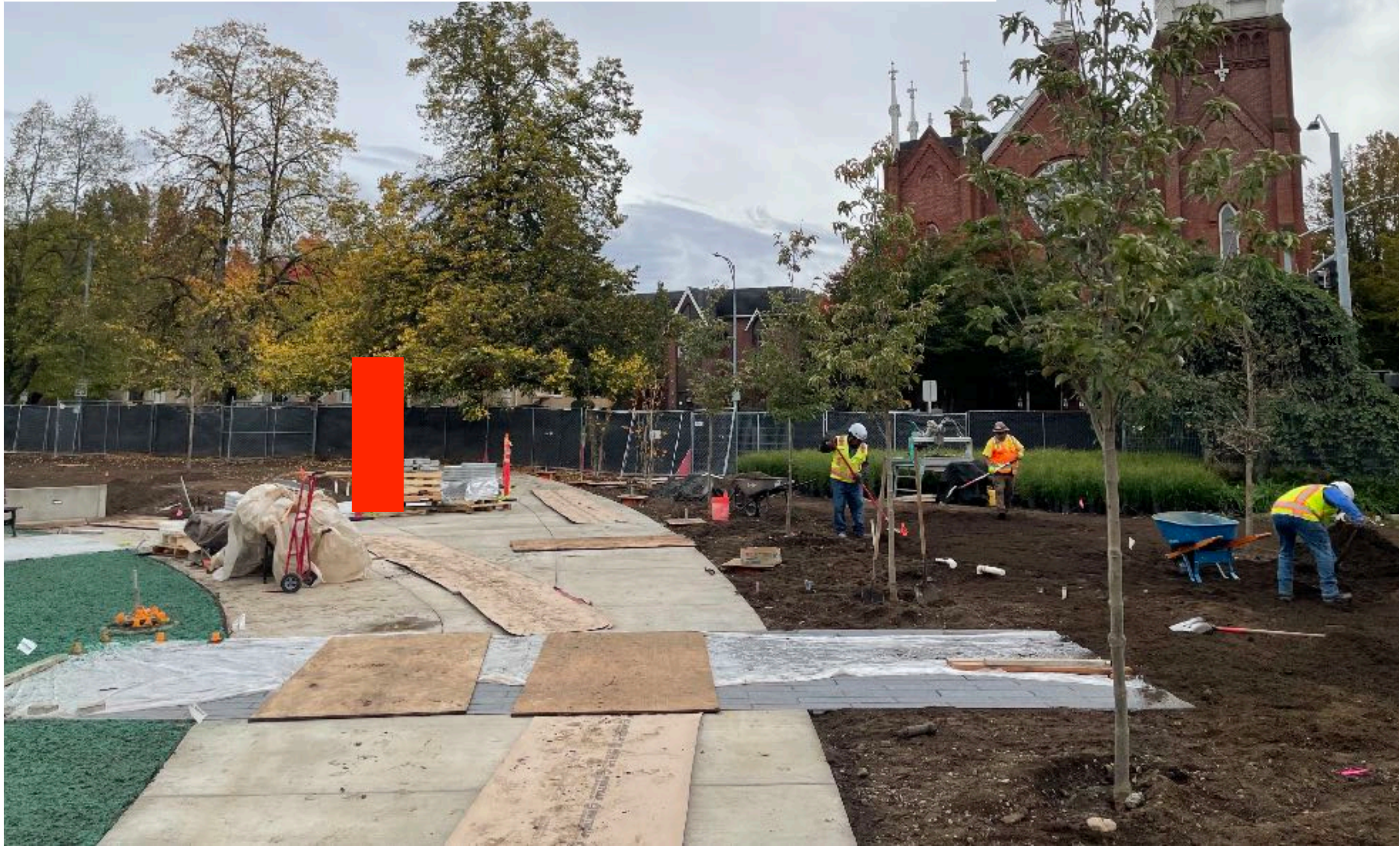


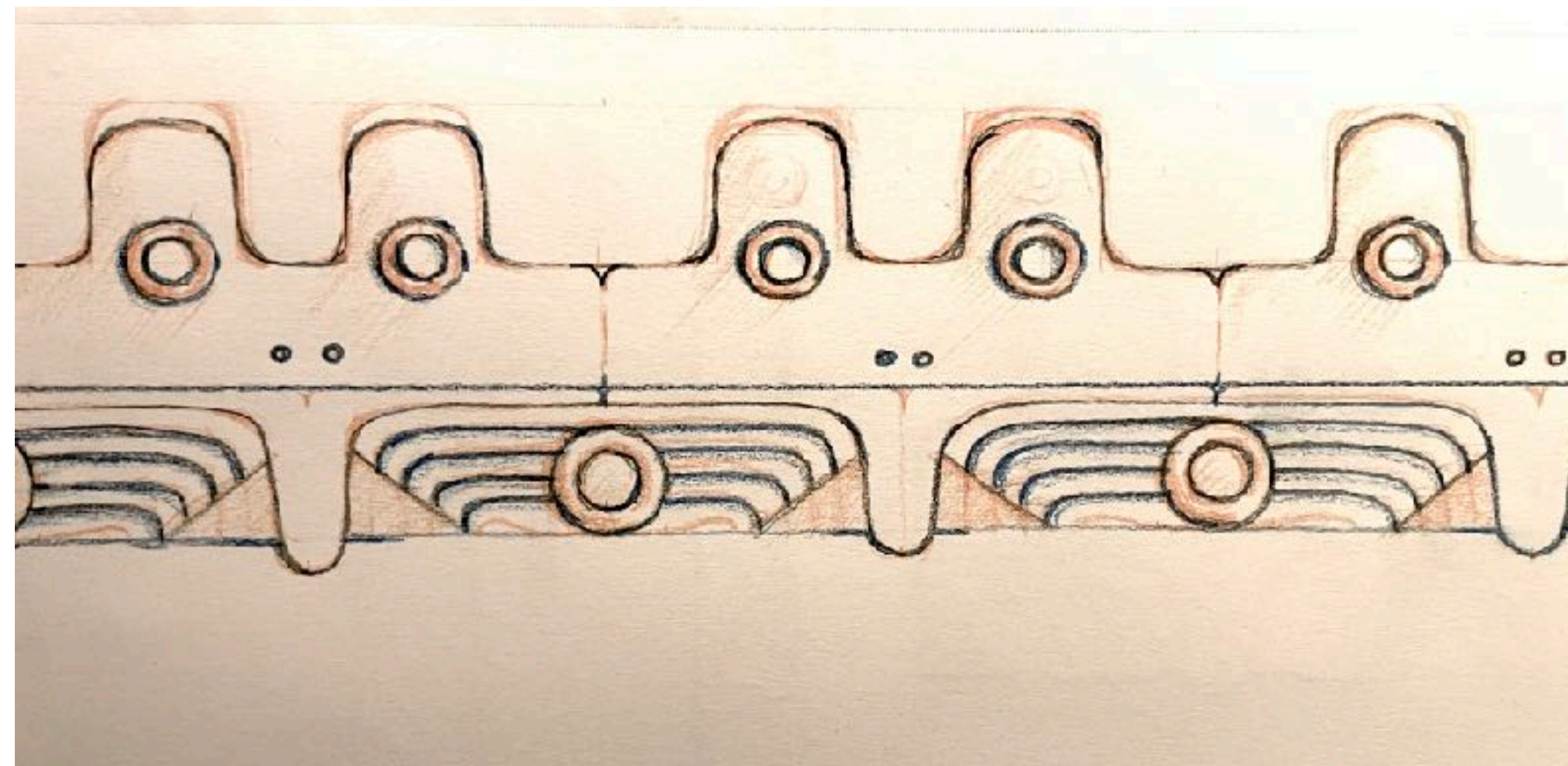
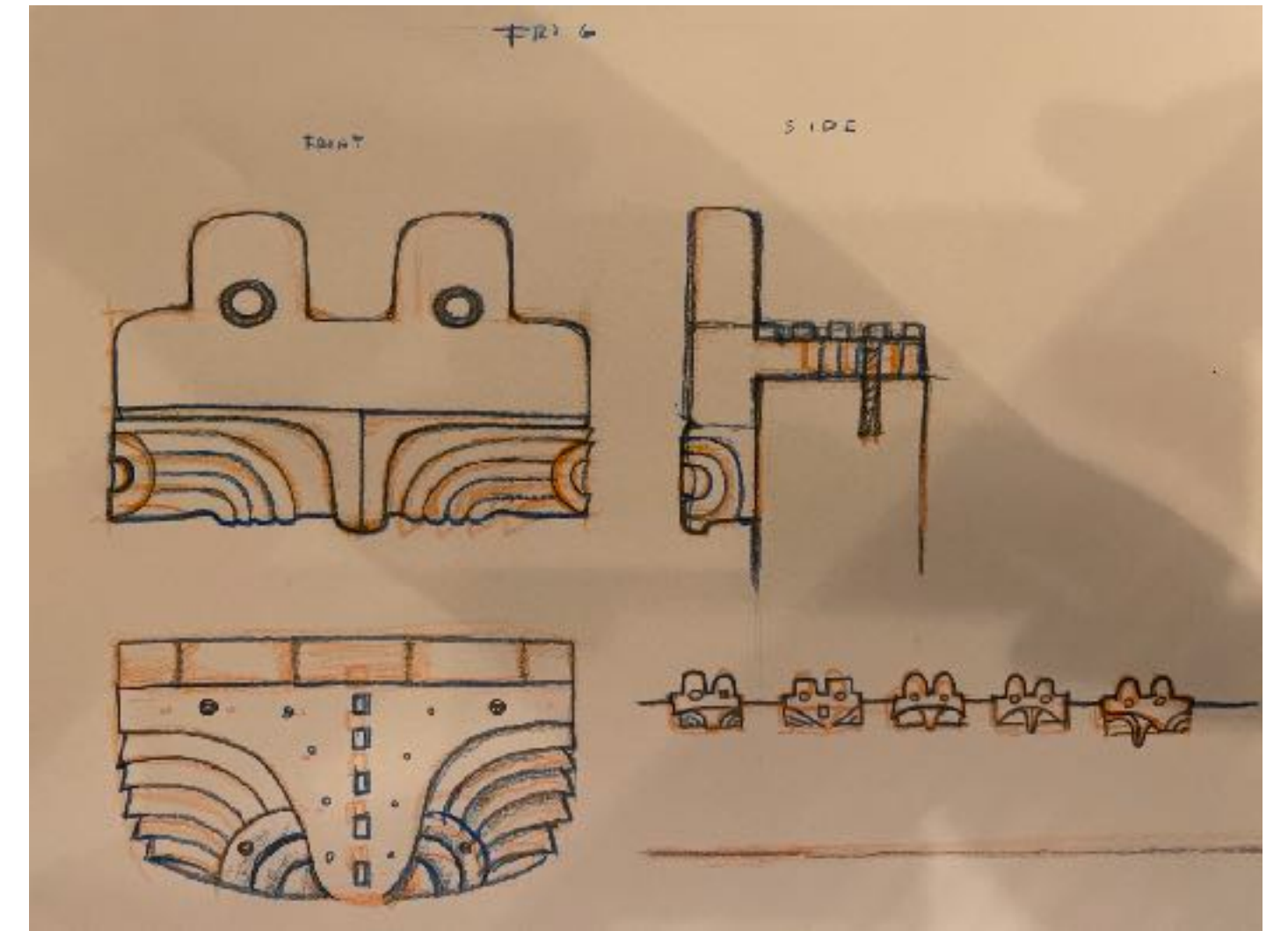
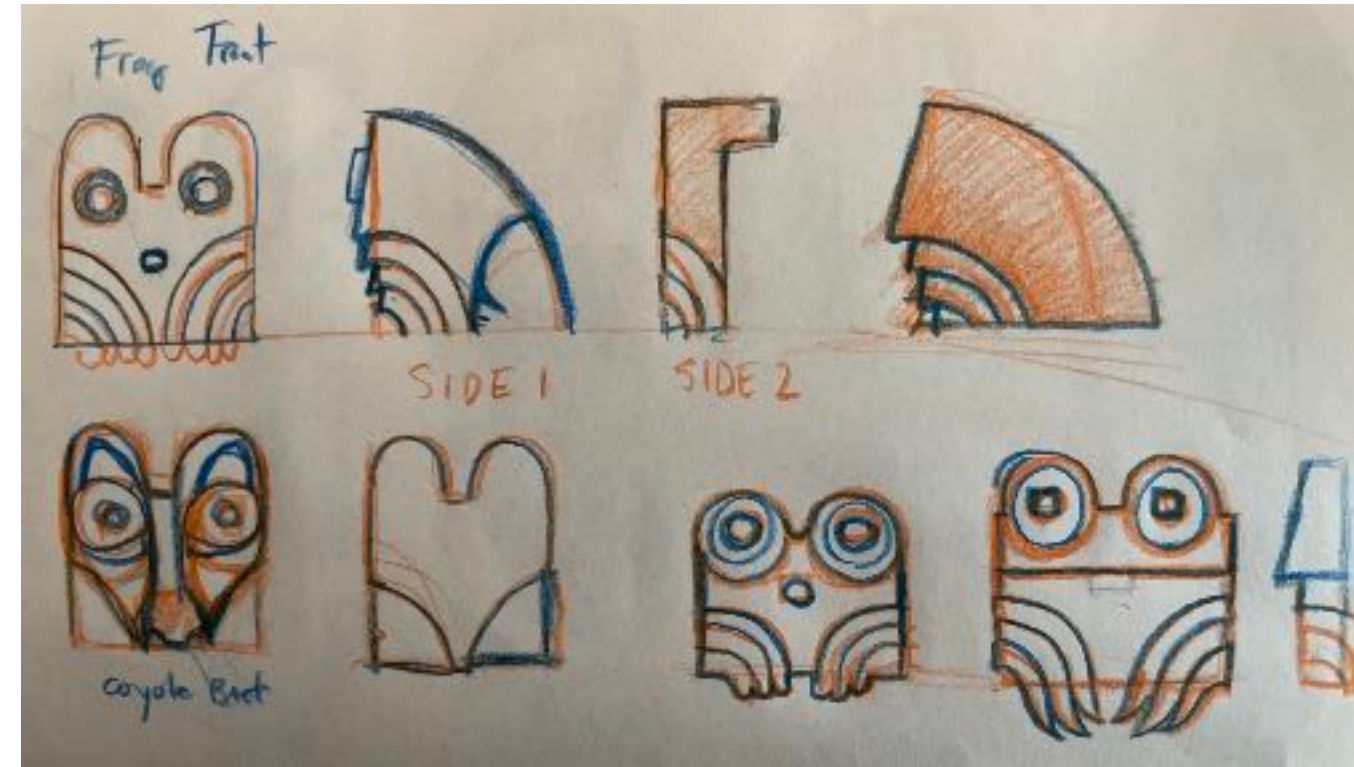
1 LAYOUT PLAN
1" = 20'-0"



Coyote inspired by interior house posts in which carved or painted images would be displayed.

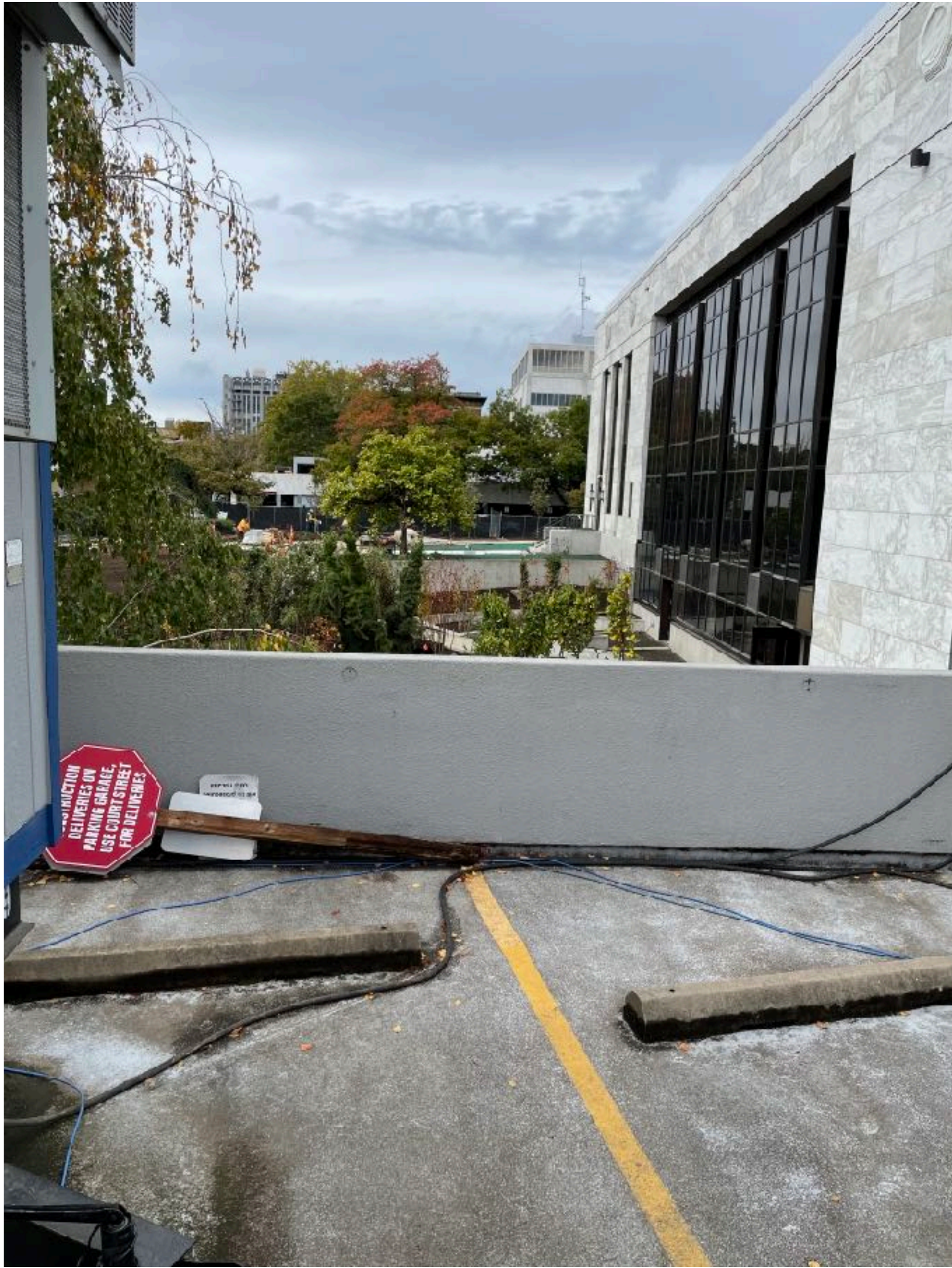
Materials: Wood (Either Western Red, Yellow or Port Orford Cedar)
Dimensions: (est). 8'-9' height x 4" depth x 20"- 30" facial wide Material
Base: Poured concrete. Estimated dimensions round 12"-24" Height x
24"-36" width suggested location: SW corner exterior building at the
slightly off the confluence of the two walking paths.

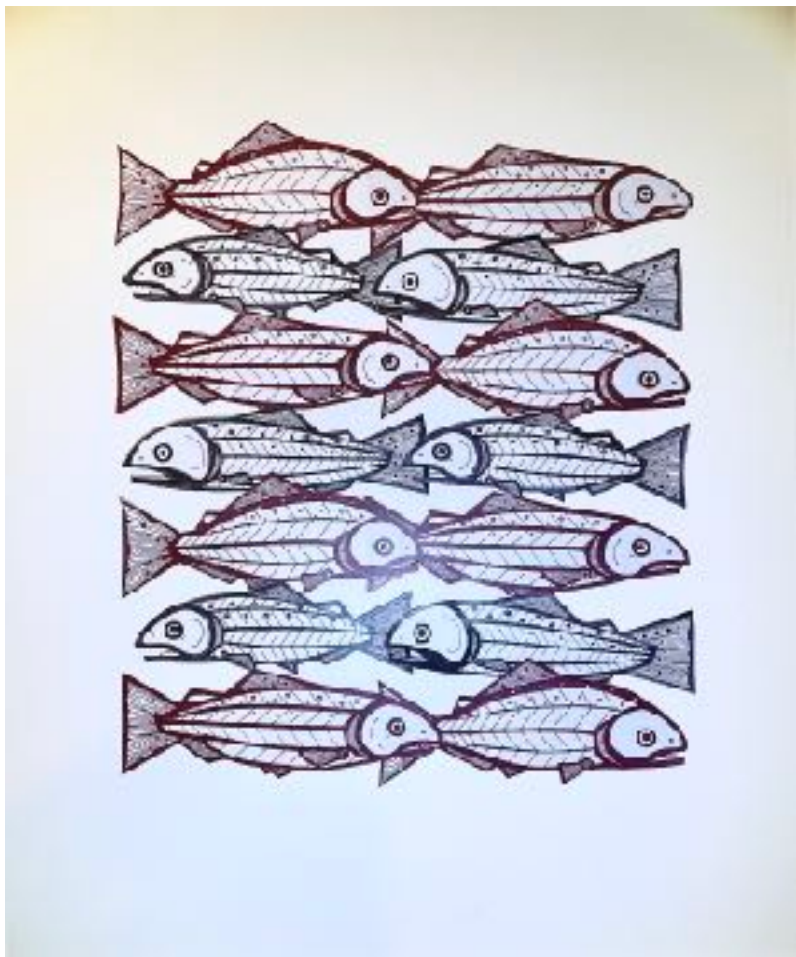
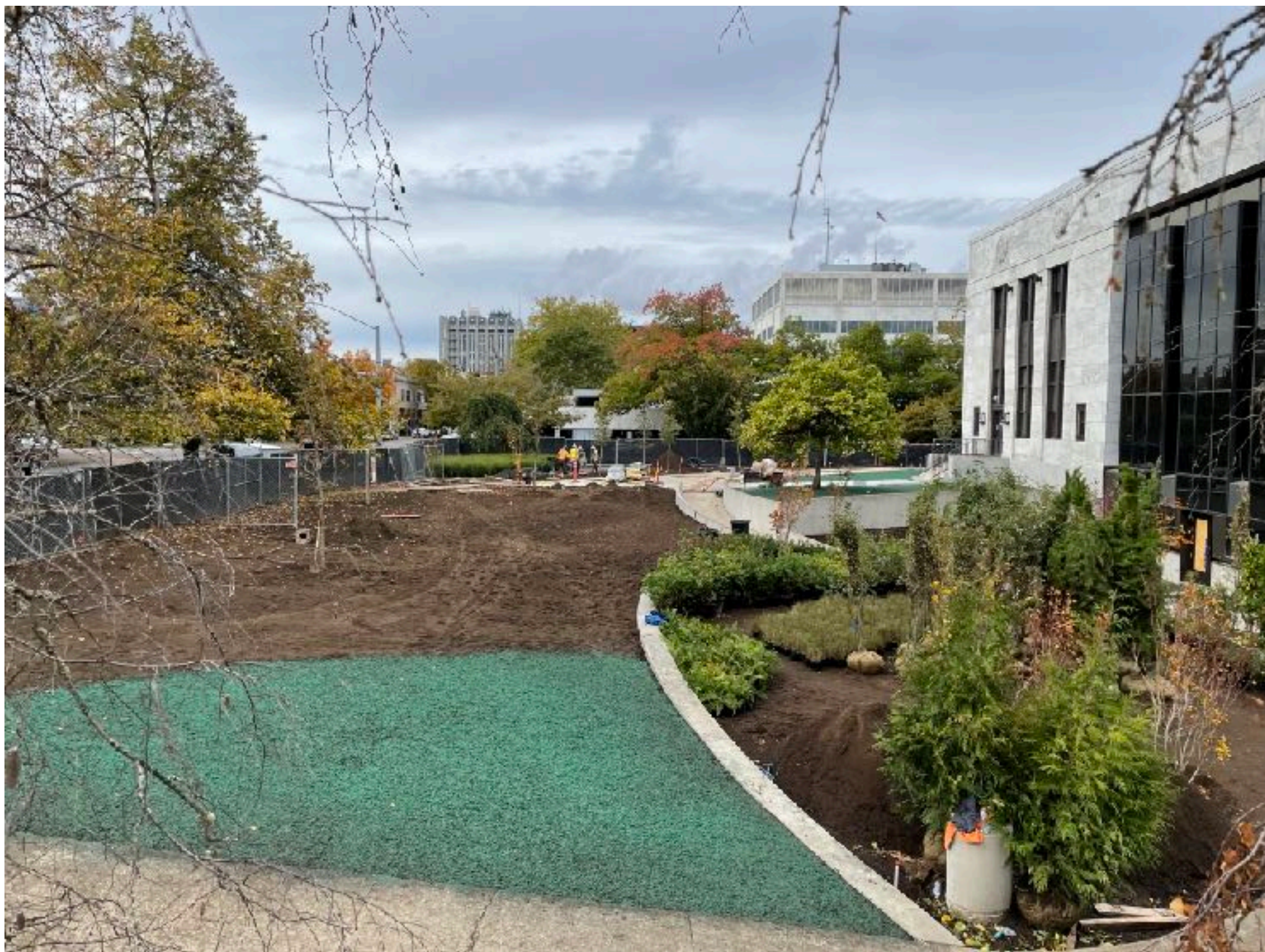




Frogs (5) inspired by carved interior house planks & Dentalium

Materials: Stacked (5) plasma cut Steel or Aluminum (powder coated)
 Dimensions: (est) 24"width x 18" height x 1"-1.5" (2 plates stacked)
 suggested location: SW corner of parking lot (facing south) attached to wall | looking at Coyote figure





Fish (5): low relief salmon, smelt, eel, sturgeon & TBT water animal

Materials: either cast bronze or milled & powder coated aluminum Dimensions: (est) 18" length x 2.5" width x 1"-1.5" height. suggested location(s): retaining walls located on the south side of the DAS building. Parallel to the ramp / landscaped area below the parking structure. Low relief designs inspired by anadromous fish of Oregon.