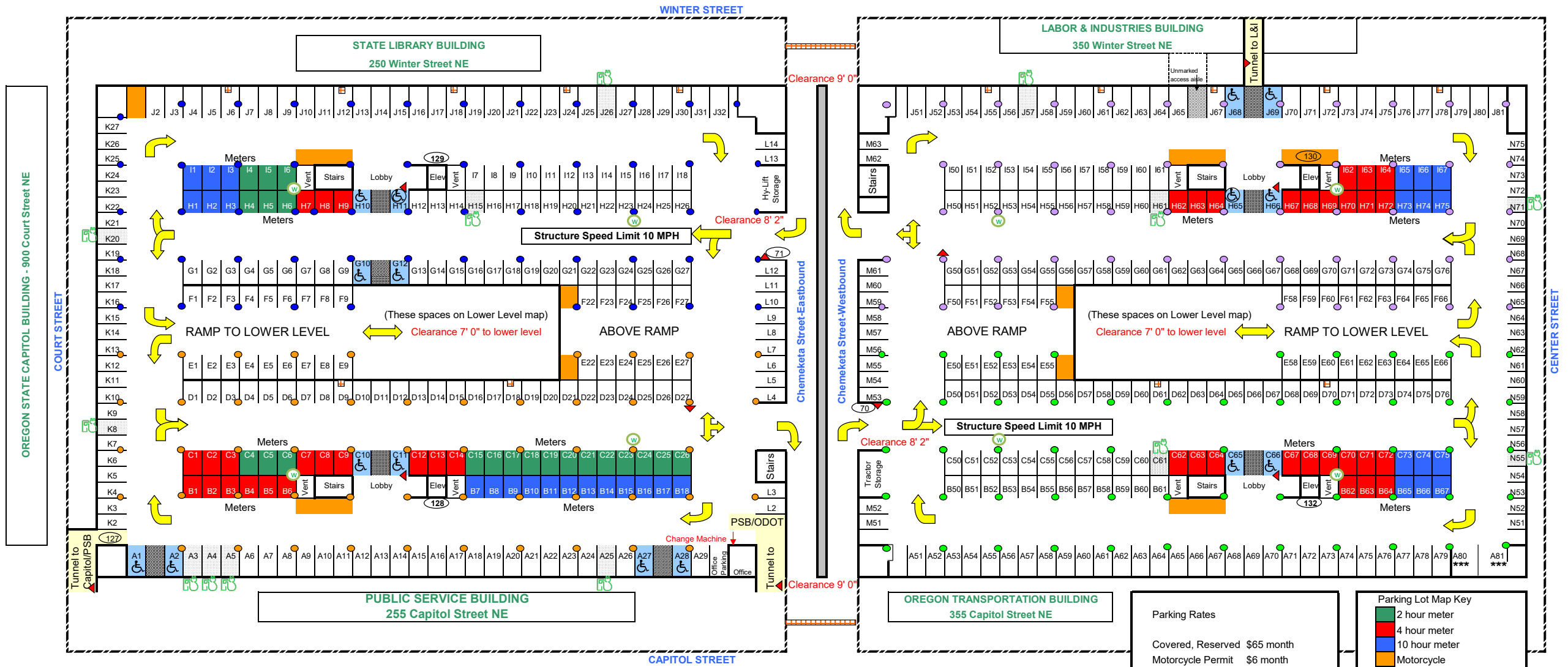
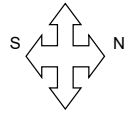


# CAPITOL MALL PARKING STRUCTURE UPPER LEVEL - 444

900 Chemeketa Street NE  
This Map is not to Scale

Parking Garage Hours: Doors & Gates, Open 5:30 AM, Close 7:00 PM, Monday - Friday



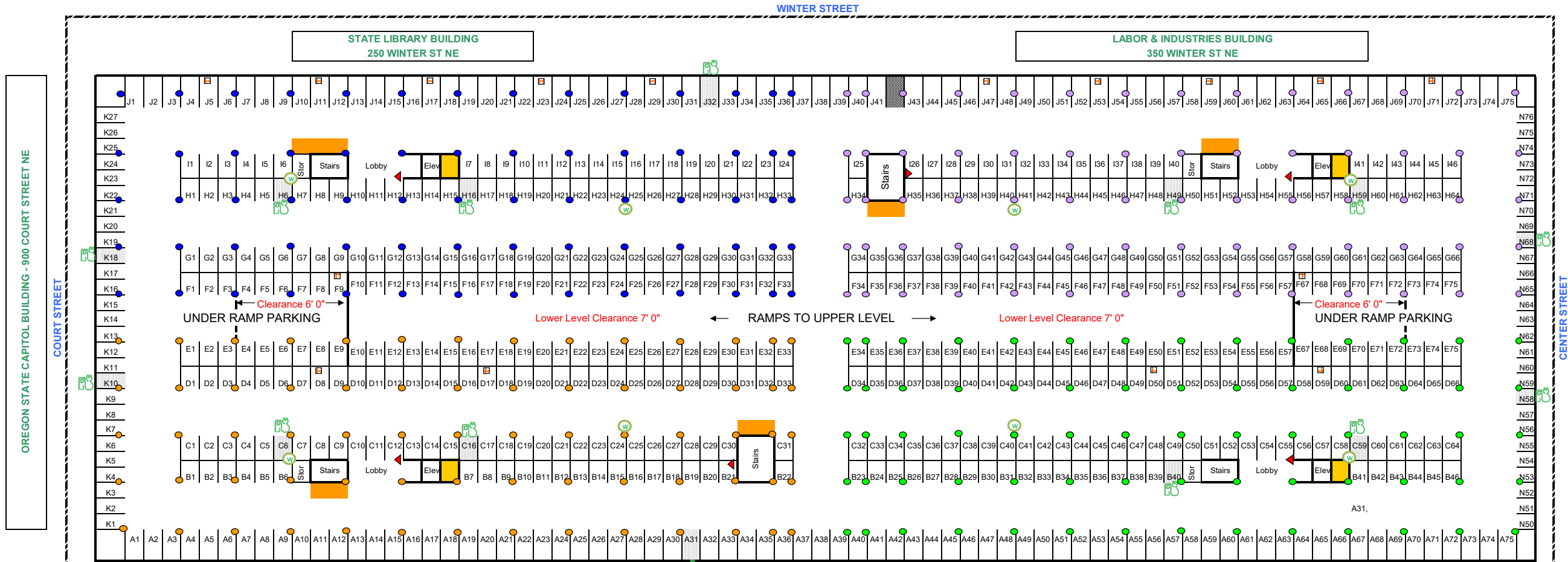
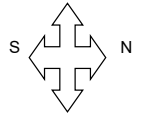
Capitol\_Mall\_Structure.xlsx - 2/4/21 MFD

| Parking Rates   |                       | Parking Lot Map Key  |                                     |
|---|-----------------------|--|-------------------------------------|
| Covered, Reserved   | \$65 month            | <span style="background-color: #90EE90; border: 1px solid black; display: inline-block; width: 15px; height: 10px;"></span>  | 2 hour meter                        |
| Motorcycle Permit   | \$6 month             | <span style="background-color: #FF0000; border: 1px solid black; display: inline-block; width: 15px; height: 10px;"></span>  | 4 hour meter                        |
| Parking Meter   | 80¢ hour              | <span style="background-color: #0000FF; border: 1px solid black; display: inline-block; width: 15px; height: 10px;"></span>  | 10 hour meter                       |
|   |                       | <span style="border: 1px solid black; display: inline-block; width: 15px; height: 10px;"></span>   | Motorcycle                          |
|   |                       | <span style="border: 1px solid black; border-radius: 50%; display: inline-block; width: 15px; height: 10px;"></span>   | Visitor disabled                    |
|   |                       | <span style="border: 1px solid black; border-radius: 50%; width: 15px; height: 10px; background: repeating-linear-gradient(45deg, transparent, transparent 2px, #000 2px, #000 4px);"></span>  | Wheelchair Only                     |
|   |                       | <span style="border: 1px solid black; border-radius: 50%; width: 15px; height: 10px; background: repeating-linear-gradient(-45deg, transparent, transparent 2px, #000 2px, #000 4px);"></span> | Employee disabled                   |
|   |                       | <span style="border: 1px solid black; display: inline-block; width: 15px; height: 10px;"></span>   | Covered, Reserved (numbered spaces) |
|   |                       | <span style="border: 1px solid black; border-radius: 50%; width: 15px; height: 10px;"></span>  | ODOT Electric charging stations     |
| <span style="border: 1px dashed black; display: inline-block; width: 15px; height: 10px;"></span> | Tunnels to buildings  | <span style="border: 1px solid black; border-radius: 50%; width: 15px; height: 10px;"></span>  | Keycard reader number               |
| <span style="color: red;">▶</span>  | Emergency Push Button | <span style="border: 1px solid black; border-radius: 50%; width: 15px; height: 10px;"></span>  | Water source                        |
| <span style="color: green;">⚡</span>  | EV Plug in 110 Volt   | <span style="border: 1px solid black; border-radius: 50%; width: 15px; height: 10px;"></span>  | Floor Drain                         |

# CAPITOL MALL PARKING STRUCTURE LOWER LEVEL - 555

900 Chemeketa Street NE  
This Map is not to Scale

Parking Garage Hours: Open 5:30 AM, Close 7:00 PM



OREGON STATE CAPITOL BUILDING - 900 COURT STREET NE

COURT STREET

CENTER STREET

WINTER STREET

CAPITOL STREET

PUBLIC SERVICE BUILDING  
255 CAPITOL STREET NE

OREGON TRANSPORTATION BUILDING  
355 CAPITOL STREET NE

| Parking Rates     |            |
|-------------------|------------|
| Covered, Reserved | \$65 month |
| Motorcycle Permit | \$6 month  |
| Bicycle Room      | \$11 year  |

**Parking Lot Map Key**

- # Covered, Reserved (numbered spaces)
- Motorcycle
- Bicycle Room
- Emergency Push Button
- Floor Drain
- Water Source
- EV Plug in 110 Volt