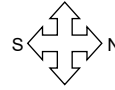


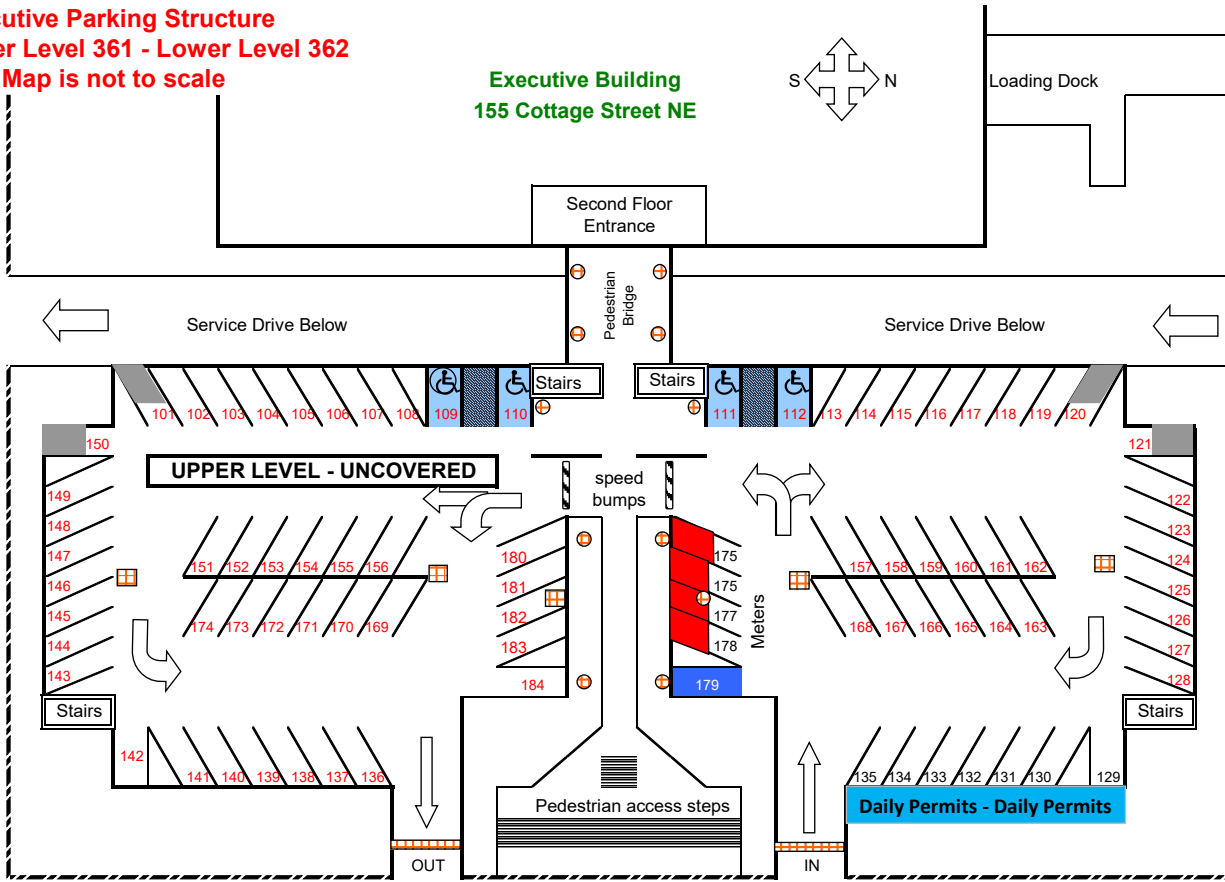
**Executive Parking Structure**  
**Upper Level 361 - Lower Level 362**  
**This Map is not to scale**

**Executive Building**  
**155 Cottage Street NE**



STATE STREET

COURT STREET



COTTAGE STREET

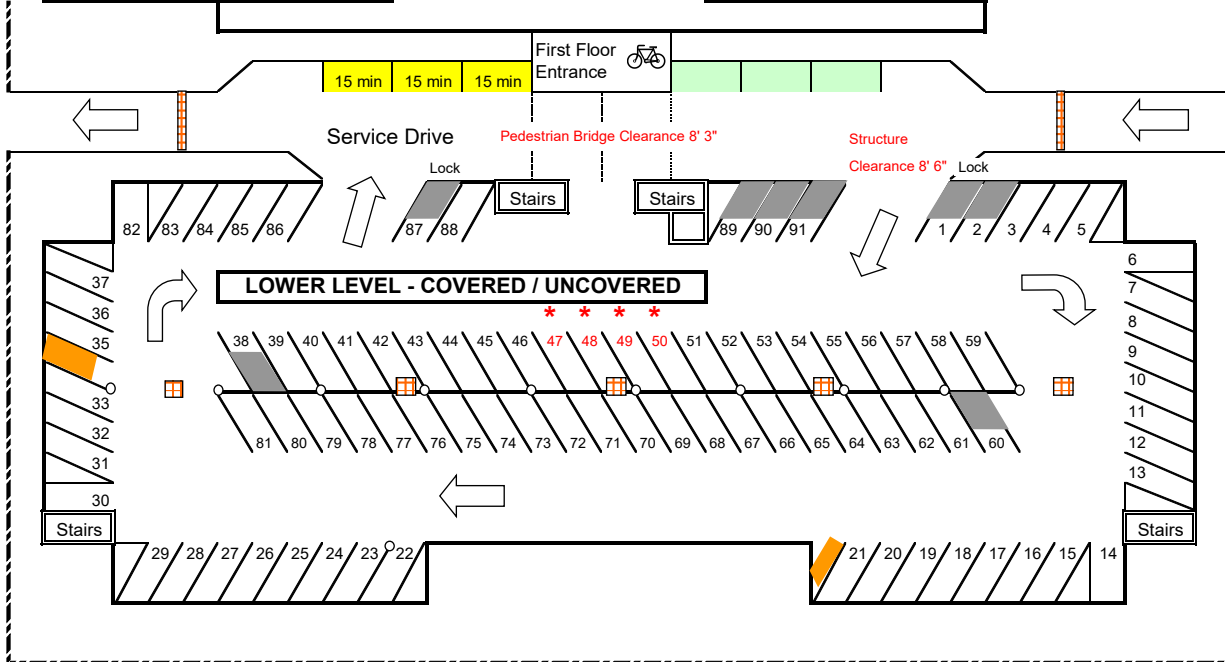
Parking Rates	
Covered, Reserved	\$65 month
Uncovered, Reserved	\$55 month
Motorcycle Permit	\$6 month
Parking Meter	80¢ hour
Bicycle Rack	No Charge

**Parking Lot Map Key**

- 4 hour meter (Red)
- 10 hour meter (Blue)
- DP # Daily Permits (DP #)
- Visitor Disabled (Blue wheelchair)
- Wheelchair Only (Blue wheelchair)
- Loading Zone (Yellow)
- Service Vehicle (Green)
- Drain (Orange square)
- Lock (Black square)
- Gate Locks (Black square)
- Covered Reserved (Numbered square)
- Uncovered, Reserved (Numbered square with asterisk)
- Compact (Grey square)
- Motorcycle (Orange square)
- Bicycle Rack (Bicycle icon)

STATE STREET

COURT STREET



COTTAGE STREET