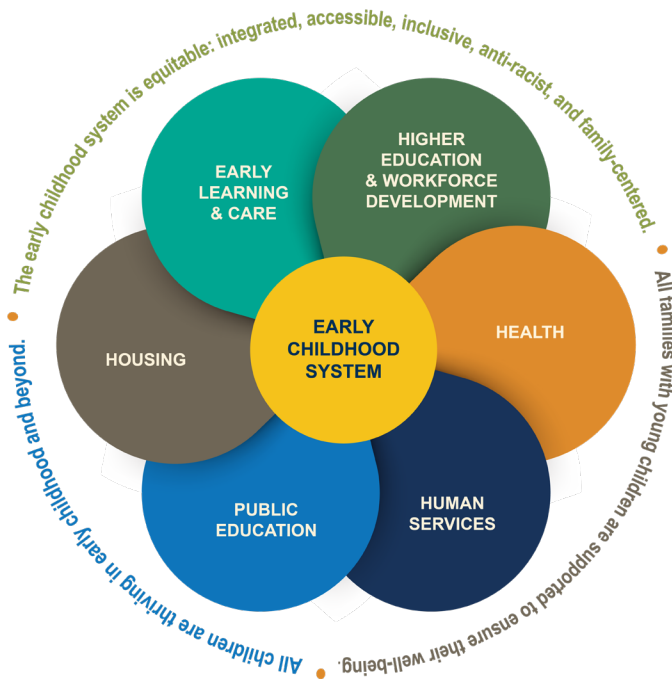


Raise Up Oregon: Progress Report for 2024

Raise Up Oregon represents the commitment of six state agencies to address the comprehensive needs of young children and their families. Raise Up Oregon calls out the specific and collaborative contributions from these state agencies and recognizes their leadership for the early childhood system.



Raise Up Oregon

System Goal 1: The early childhood system is equitable: integrated, accessible, inclusive, anti-racist, and family centered.

System Goal 2: All families with young children are supported to ensure their well-being.

System Goal 3: All children are thriving in early childhood and beyond.

This report focuses on the 2024 priorities for *Raise Up Oregon* set by the Early Learning Council (ELC), highlighting the efforts made by the six state agencies and the ELC that are working together to develop the state's system for early childhood.

2024 Priorities

▶ Early Learning Hubs

▶ Home Visiting

▶ Housing

▶ Prenatal to Age 2 / Family Supports

▶ Social Emotional Health

▶ Workforce

▶ Early Learning Hubs

Early Learning Hubs Workgroup Launched. The ELC and DELC launched a workgroup with the Early Learning Hubs (Hubs), which identified three core functions, Convenor, Connector, and Capacity Builder.

Hubs Advanced the Birth to Five Literacy Initiative. DELC provided Hubs with \$4.7 million to support parenting education and professional development through the Birth to Five Literacy Initiative (House Bill 3198).

▶ Home Visiting

The Center for Coordinating Home Visiting Systems (CCOHVS) Launched. The ELC's Home Visiting Systems Committee identified the need for this new center, which is financed by OHA, DELC, and foundations, serves as a coordination backbone, and is led by Portland State University.

Home Visiting Advocacy Partnership Launched. The ELC brought together home visiting leaders, which led to a new coalition, organized by the Children's Institute, to strengthen statewide home visiting support.

Expansion of Healthy Families Oregon. DELC's Healthy Families Oregon (HFO), which provides home visiting for families with newborns or expecting parents, expanded from 15 to 17 grantees, is now offered statewide, and increased its reach by 17% between 2021-22 (1,800 families) and 2023-24 (2,120 families).

Family Connects Oregon Continued Its Planned Rollout. Families in Central Oregon, Clatsop County, Eastern Oregon, Four Rivers, Linn, Benton, Lincoln, Marion, Polk and Washington counties received nurse home visits after the birth of their child. During 2024, new sites planned for implementation in their communities.

▶ Housing

Oregon Housing and Community Services (OHCS) Department Launched the Co-location of Affordable Rental Housing and Early Care & Education (CARE) Program. CARE, administered by Build Up Oregon, supports co-location within affordable rental units. In 2024, CARE identified 10 projects with 408 slots for preschoolers and 129 for infants and toddlers.

OHCS' Redesign of Funding Process Includes Prioritization for Early Learning and Care. OHCS worked on its Qualified Allocation Plan and the Oregon Centralized Application (ORCA), which offers loans, grants, and tax credit funds to develop affordable housing throughout Oregon.

OHA Launched Health-Related Social Needs Benefit as part of the Oregon Health Plan. Health-related social needs (HRSNs) in housing, climate and nutrition supports were launched. During the first four months, 1,676 climate devices such as air conditioners, heaters, air filters, mini-fridges, and portable power supplies for medical devices were delivered. Housing supports help individuals keep and stay in their homes, and can include rent, utilities, storage fees, tenancy support and home changes for health and safety.

Temporary Assistance for Domestic Violence Survivors (TA-DVS) Cash Grant Increased. ODHS increased the cash grant for the TA-DVS program from \$1,200 to \$3,200. 70% of cash grant expenditures were housing related.

Youth Experiencing Homelessness Program (YEHP) Investments Expanded. ODHS's YEHP funds housing supports and services for unaccompanied youth ages 24, including pregnant and parenting youth. Pregnant and parenting youth were also a priority population in the YEHP's Direct Cash Transfer Plus (DCT+) pilot program, with around 35% of the 120 DCT+ participants.

▶ Prenatal to Age 2 / Family Support

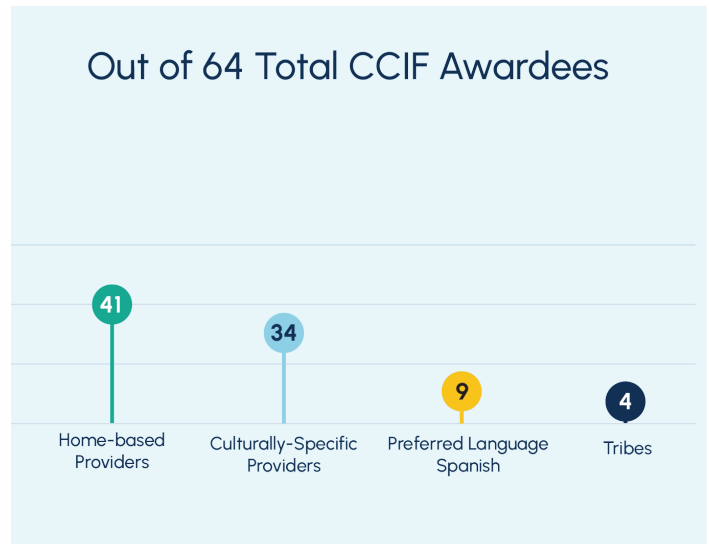
Launch of Infant and Toddler Nutrition Campaign. OHA conducted the Infant and Toddler Nutrition digital ad campaign, with over 3.5 million social media impressions to its core audience of African American/Black mothers and caregivers. The campaign led to 9,769 visits to OHA's Infant, Toddler, and Childhood Nutrition website.

New Infant Early Childhood Mental Health (IECMH) Professional Development Offered. Over 120 IECMH professionals participated in IECMH professional development provided by ODE in partnership with Oregon Infant Mental Health Association (ORIMHA).

Awards of \$10 Million for the Child Care Infrastructure Fund (CCIF). The Child Care Infrastructure Fund (HB 3005), administered by Business Oregon and DELC, received 738 applications requesting \$289 million from 34 of 36 counties. 64 organizations were selected; 14% are Spanish-speaking programs, 64% are home-based providers, and 53% are culturally specific. 4 Oregon Tribes were selected.

Expansion of ODHS's Family Preservation Initiative. Family Preservation's collaborative approach to serving families in their homes and communities results in preventing children from entering foster care. The program expanded from 3 to 8 sites, and worked collaboratively with home visiting and Relief Nurseries.

Funding for Communities and Tribal Nations to Advance Early Literacy. ODE received \$10 million through HB 3198 for the early literacy community success grant (\$8 million) and to support indigenous language development in Tribal nations (\$2 million).



▶ Social Emotional Health

Regional Service Providers Created to Support the New Suspension Expulsion Prevention Program. HB 2166 established DELC's Early Childhood Suspension and Expulsion Prevention Program (ECSEPP) and SB 236 prohibits suspension and expulsion in early learning and care programs as of July, 2026. DELC partnered with the Oregon Infant Mental Health Association (ORIMHA) and launched 14 regional service providers (RSP) in 15 regions as part of its implementation.

Updated Universal Referral Form for Early Intervention and Early Childhood Special Education. To support consistent pediatric referrals to early intervention/ early childhood special education (EI/ECSE), ODE updated their Universal Referral Form with the Oregon Pediatric Improvement Partnership (OPIP).

Workforce

Identification of Maternal and Child Health Workforce Partnership Opportunities. OHA's Maternal Child Health (MCH), now renamed Family and Child Health, worked with local MCH grantees to develop opportunities to increase the diversity and stability of the workforce, particularly in rural areas.

Provided Early Learning and Care Funding for Staff Recruitment and Retention. Base funding increased by 7 to 10% for DELC's Healthy Families Oregon, Relief Nurseries, Preschool Promise, and Oregon Prenatal to Kindergarten to improve staff recruitment and retention.

Alternative Pathways to Early Intervention and Early Childhood Special Education (EI/ECSE) Credentials. ODE refined alternative pathways to credentials without requiring additional higher education, resulting in increased applications for both Supervisor and Specialist certification.


Scholarships for Infant Toddler Mental Health Graduate Certificate Program. OHA provided twelve scholarships for the Infant Toddler Mental Health Graduate Certificate program in 2023-2024; five are bilingual/bicultural (Spanish) and nine currently work providing early mental health supports to Medicaid-eligible families with children ages 0 – 5. Thirty-four people applied for 2024-2025, with ten selected.

A HECC funded report prioritizes child care. The Oregon 2024 Talent Assessment Report, a project of HECC, prioritized child care as essential to the functioning of Oregon's economy. Child care workers were identified as a necessary occupation.

Looking Ahead – Priorities for 2025

In its October 2024 retreat, the Early Learning Council set the stage for their 2025 priorities. These 2025 priorities are rooted in elevating the importance of cross-system work, and comprehensive supports for children and their families.

2025 Priorities

 Behavioral Health

 Education, Child Care, and Early Learning

 Early Learning Hubs

 Home Visiting

 Housing