

About

Every Child Belongs (ECB) supports Oregon early childhood educators in building nurturing and responsive early learning environments for infants, toddlers, and preschoolers. It brings together early learning and care programs, support specialists, and community based resources to collaboratively implement strength based strategies for promoting social emotional development and handling challenges (or: challenging situations) when working with young children. This new service aligns with a new law effective July 2026 that prohibits suspensions and expulsions in early learning settings. Every Child Belongs aims to foster a more equitable, fair, inclusive, and professionally supported early education system.

Why This Matters

When a young child is expelled, it has wide ranging negative impacts not only for the child but for the family and the broader workforce. Yet each year, nationally thousands of infants, toddlers, and preschoolers are suspended, expelled, or “soft expelled” and asked to leave care. Recent research in Oregon shows the numbers of young children asked to leave care are not race neutral. As a result of current and historical inequities and discriminatory practices, Black, Indigenous, Pacific Islander, and other children of color, as well as children with disabilities, are more likely to be expelled or suspended.

In order to increase coordinated, culturally responsive, and family-centered supports that recognize and respect the needs of all children, Oregon is launching a new preventative, no cost service for early learning professionals. Every Child Belongs will provide supports including professional development, coaching, and consultation on anti-bias practices, social-emotional development, infant and early childhood mental health, and strategies to handle challenging situations with children. Every Child Belongs aims to increase support while decreasing disparities in order to keep young children connected and supported in caring environments where they can grow, learn, and thrive.



Supports You Can Expect

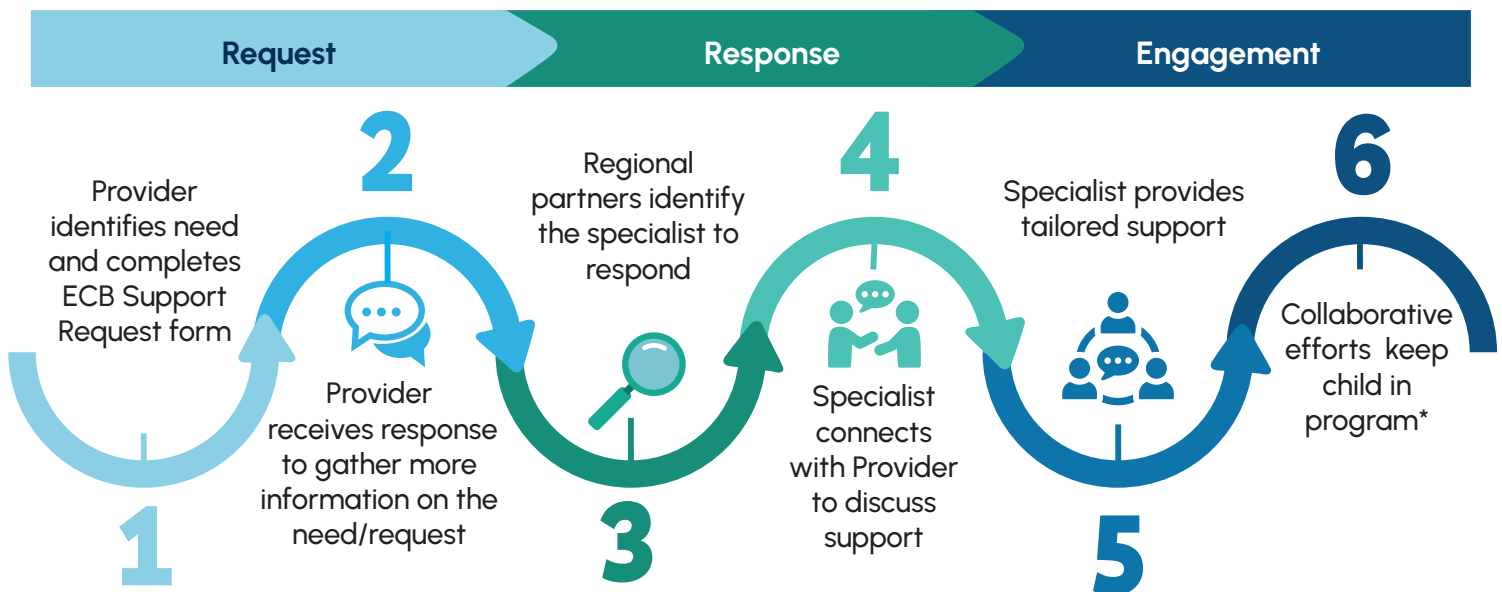
- Professional development
 - Trauma informed training
 - Anti-bias and anti-racism training
 - Coaching or consultation
 - Technical assistance
- Simple process to request support
- Coordinated response to requests for support
- Infant and Early Childhood Mental Health Consultation (IECMHC)



What's next?

July 2025	The first phase of this service is launching this summer in select regions. Check the website for updates.
July 2026	Early educators can request support statewide and new law takes effect.

Process to Request Support



* Occasionally it may be determined that a transition plan is needed. This happens in collaboration with support specialist, the provider, and the child's parent/family.

To learn more information visit: oregon.gov/delc/programs/Pages/sepp.aspx