



# Provider Information Session

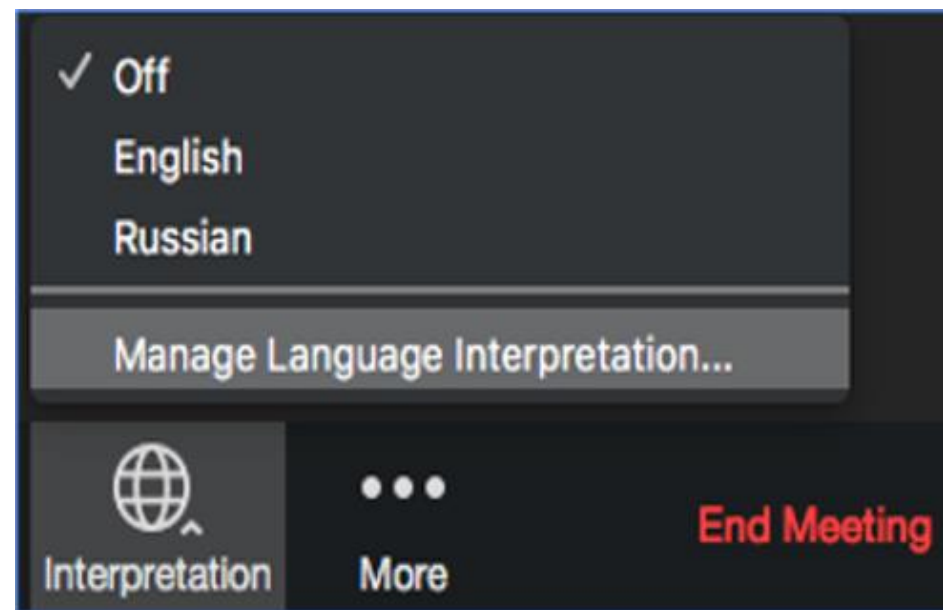
---

May 21, 2025

The webinar will start shortly

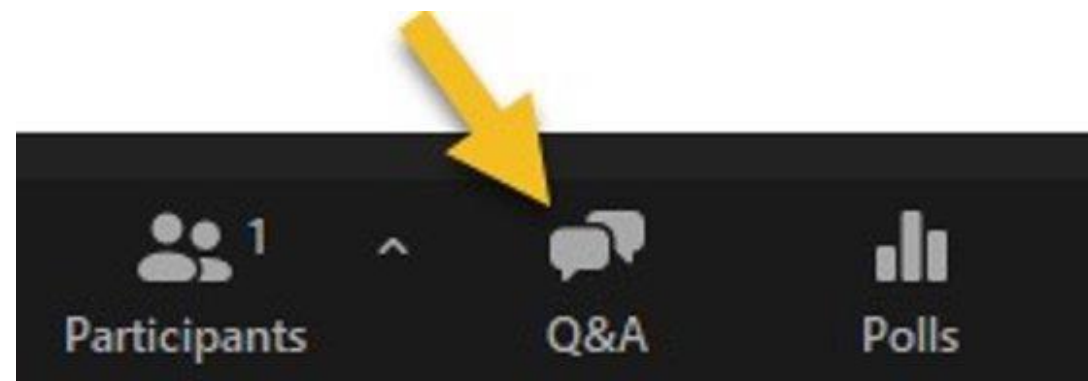
# Interpretation available

- Click the globe icon to select your language. You can find it in the bottom right corner.
- Presione el icono del mundo para seleccionar su idioma. Lo puede encontrar en la esquina derecha de su pantalla.
- Чтобы выбрать нужный язык, нажмите на значок с изображением глобуса в правом нижнем углу экрана.



# Question and Answer Feature

- Click the Q&A icon to ask our panelists questions.
- Presione el icono de Preguntas y Respuestas para hacer preguntas a nuestros panelistas.
- Нажмите значок «Вопросы и ответы», чтобы задать вопросы участникам дискуссии.



# May Agenda

- Every Child Belongs
- ERDC Updates
- Agency and Program Updates





# Every Child Belongs

**(Formerly known as the Early  
Childhood Suspension & Expulsion  
Prevention Program)**

# Every Child Belongs

A new service to support educators to keep young children in care

## Components of Every Child Belongs:

- Training and Technical Assistance
- Infant and Early Childhood Mental Health Consultation (IECMHC)
- Every Child Belongs Connect (ECB Connect)
- Behind-the-scenes coordination among regional organizations



# ECB Training and Technical Assistance



- Each region has a Child Care Resource and Referral (CCR&R) to support educator professional development
- When requested, CCR&R Technical Assistance (TA) staff can meet with you, visit your program, and provide suggestions, resources, and support for goal setting at no charge.
- Pyramid Model eModules available at no cost, through the Early Learning System Initiative (ELSI) at Oregon Start University
- Coming soon: We will launch nine (9) new virtual trainings on evidence-based behavioral supports and family supports (free, available on OCCD)

# Technical Assistance

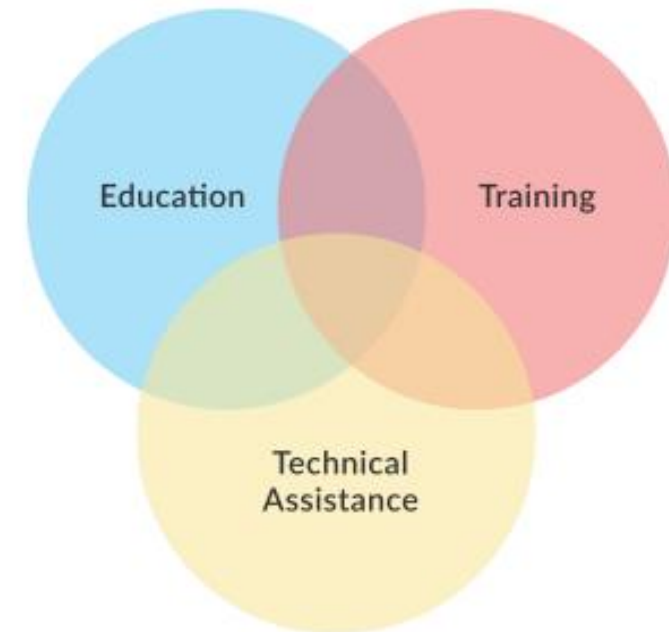
## What is Technical Assistance (TA)?

- Individualize interactions to support reflections, goal setting and change in practice
- Can be mentoring, peer-to-peer learning, coaching or consultation

## What is TA consultation?

- Relationship with TA provider
- Specific topic or issue to dig deeper into
- Includes observations, reflective feedback & goal setting

## Professional Development



# Infant and Early Childhood Mental Health (IECMH) Consultation



## ✓ IECMH Consultation Is:

- A relationship-based approach that pairs a mental health consultant with early educators who work with infants and young children in child care and preschool settings.
- A collaborative process between the mental health consultant and the early educator in which the educator's knowledge and expertise are valued and respected
- Culturally responsive and trauma-informed

## ✗ IECMH Consultation is Not:

- About "fixing kids"
- Therapy for the child, family, or early educator
- Coaching or telling educators what to do
- A directive or an "expert model" in which an expert comes in with "all the answers"



IECMH Consultation will be available in all regions across the state. IECMH Consultants will be hired by organizations referred to as "Regional Service Providers" (RSPs).

# Infant Early Childhood Mental Health (IECMH) Consultation



July-  
September  
2025

- IECMH Consultation begins in *some regions*

October-  
December 2  
025

- IECMH Consultation expands to *more regions*

January-July  
2026

- IECMH Consultation expands to *remaining regions*

July 2026 and  
ongoing

- IECMH Consultants are being hired and are going through onboarding and training
- Continuous Quality Improvement: Reviewing data and outcomes and making changes to the model when needed

# Every Child Belongs Connect

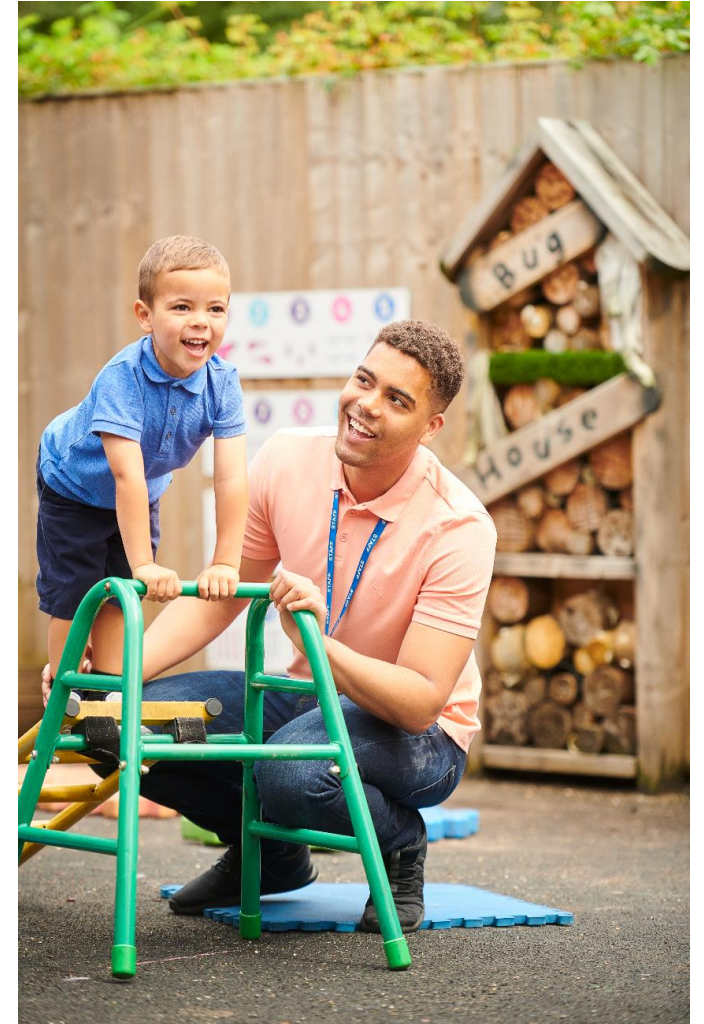


## Every Child Belongs Connect Definition

- This is the new name for what we used to call the "warmline" or the "support request form/process"
- An online portal for early learning and care providers to request support when a child may be at risk for suspension or expulsion by connecting educators to the right services. This may include technical assistance, Infant and Early Childhood Mental Health Consultation, or other services such as Early Intervention/Early Childhood Special Education, based on the situation.

# Request ECB Connect Support When...

- ECB Connect is available in your community (see phases on next slide)
- You, the Educator/Provider, want to talk with someone about how to support a child (or group of children) to be successful in your early learning environment
- You think you may not be able to meet the needs of a child in your early learning environment or when you think you might want to ask them to leave



# ECB Connect Explanation



Why?

One common place for early learning and care providers to access support via online form when experiencing challenging child care situations.

When?

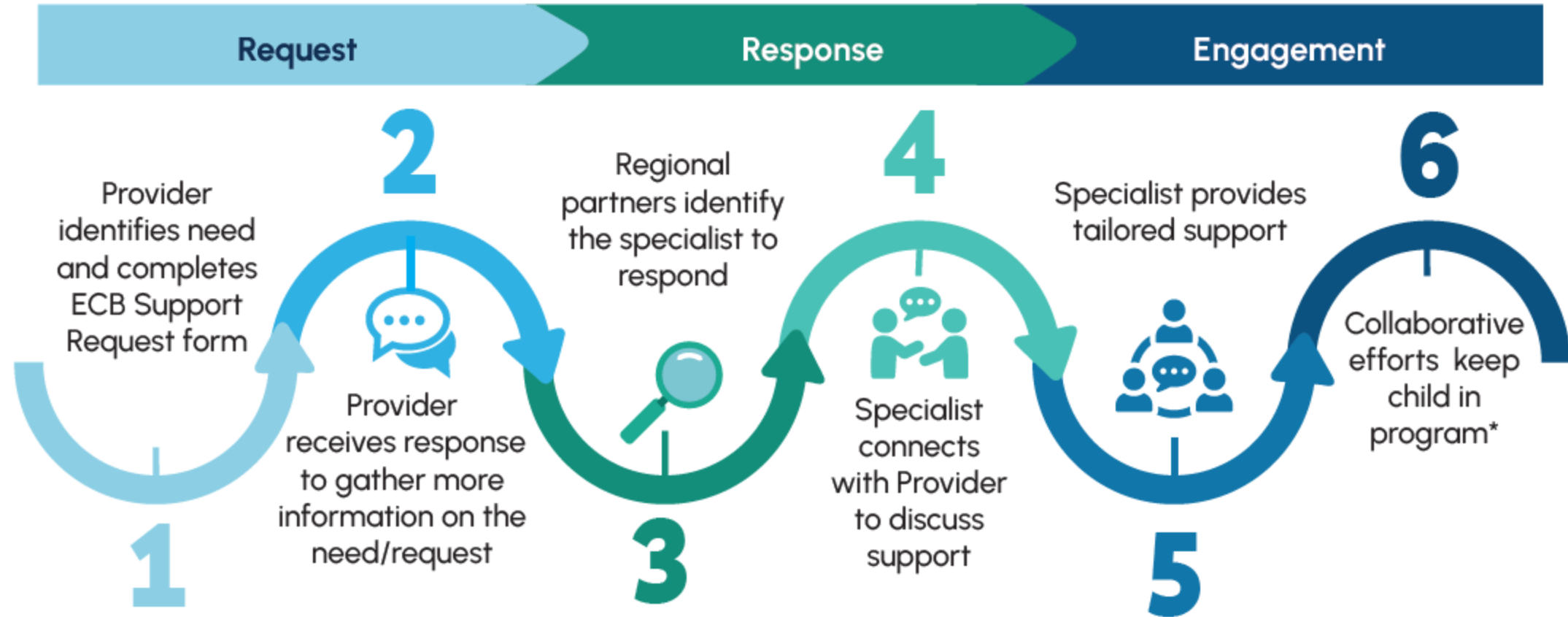
- Phase 1 (July 2025) - Early Access
- Phase 2 (October 2025) and
- Phase 3 (January 2026) will expand access statewide.

Where?

Starting with regions where:

- The CCR&R has identified staff who will be ready to provide in-person Technical Assistance
- The Regional Service Provider (RSP) will have hired and onboarded an IECMH Consultant – and Consultant will be ready to provide IECMHC services
- Regional coordination is established among the partners

# ECB Connect Visual



\* Occasionally it may be determined that a transition plan is needed. This happens in collaboration with support specialist, the provider, and the child's parent/family.

# More Information

Please be on the lookout for Every Child Belongs updates in DELC's Child Care Update newsletter and on our page on the DELC website:

<https://www.oregon.gov/delc/programs/pages/ecb.aspx>





# **ERDC Updates**

## **Employment Related Day Care Subsidy**

# ERDC Waitlist



## Employment Related Day Care

The Employment Related Day Care (ERDC) program helps families who are working, in school, or receiving Temporary Assistance for Needy Families (TANF) pay for child care. Over the last year, ERDC has increased child care access and made care more affordable.

This dashboard is updated monthly with data through to the preceding month. It was last updated May 9, 2025.



**16,304**

families are enrolled

**4,681**

providers accept ERDC

**\$8.7**

is the average copay

**11,300**

families are on the waitlist

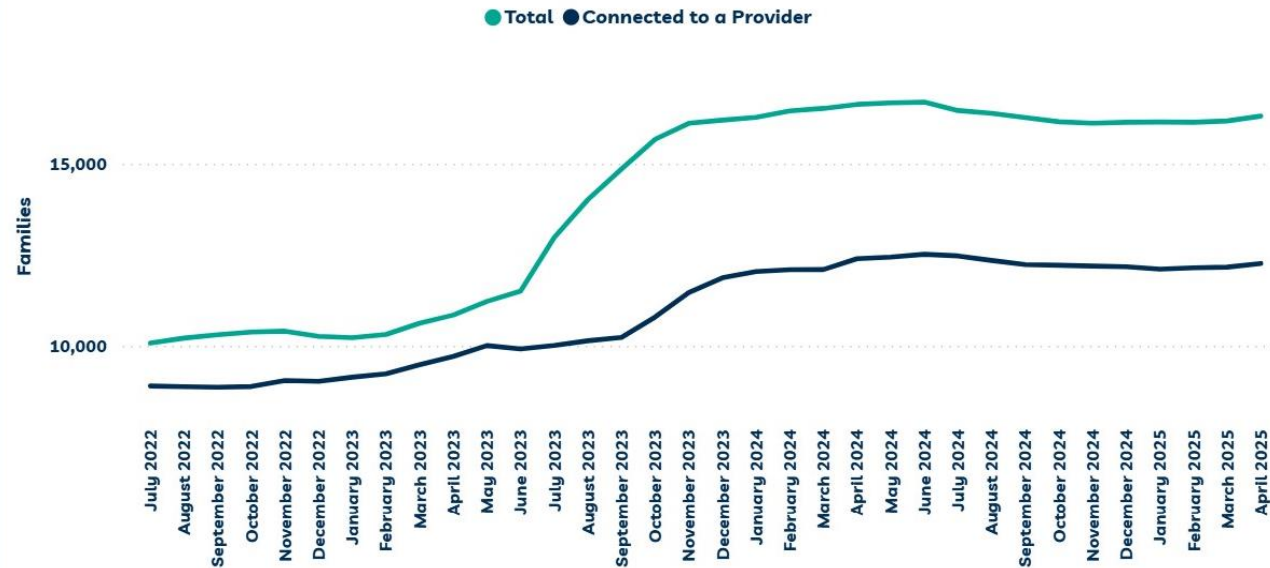
An [ERDC waitlist](#) opened on November 4, 2023, due to increased enrollment and limited funding. The waitlist number represents families who want subsidized child care—not the number of families who are eligible for ERDC.

### State-Level Data

### County-Level Data

### Notes

## Number of Families on ERDC



Recent changes to ERDC have made the program work better for families and providers. Before, families had a short time to find a child care provider before losing benefits. Starting July 1, 2023 approved families now have 12 months to find a provider that fits their needs. This federal requirement gives families time to find providers that fit their children, schedule, and preferences.

The expansion and improvement of the program have demonstrated what families already know: Oregon's economy depends on child care. When we invest in early learning and care, we invest in families, our workforce, and our collective future.

# ERDC Unconnected Families



There are currently ~4,000 families who are eligible for ERDC, but do not have a provider connected. DELC has been working with unconnected families to see why and how we can help.

This includes surveying families, sending text messages about provider referrals, and ODHS family coaches checking in with families about their child care needs. DELC is also working with Find Child Care Oregon to make ERDC programs more visible.



# FCCO ERDC Referral Development

# ERDC Referral Search

Search For Programs Search For Compliance Reports

▼ Search Criteria (click to open/close) Clear Filters Find

Quick Find:  
Enter Program Name or Number

\*Search location:  
Address School

Address  
To enable radius search, city and zip are required.  
\*City \*and/or Zip  
City Zip OR

Type of Care:  
To view more search filters, select a Type of Care.

Licensed Center  
 License Exempt Center  
 Licensed Home  
 License Exempt Home

+ ERDC Subsidy Status

ERDC Active

The Find Child Care Oregon Referral ERDC search has been moved to a more user-friendly location.

Users can now search for Active ERDC Programs under the "Type of Care" section

# ERDC Logo



Caterpillar Clubhouse



Caterpillar Clubhouse  
118 E Main Street, Molalla OR 97038  
[View Map](#)  
(503) 759-7030

Regulation: Licensed Child Care Center  
License ID: CC502502

Capacity: 58  
Ages Served: 2 Months - 10 Years  
Monday - Friday 6:00am - 6:00pm

[Licensing & Compliance Report](#) [Program Details](#)

All ERDC Active - Approved programs will now have the ERDC Logo displayed on the referral profile (next to the Spark logo).

# ERDC Description & Hyperlink

This program is active in the Employment Related Day Care (ERDC) program.

ERDC is a subsidy that helps families who are working, in school, or receiving Temporary Assistance for Needy Families (TANF) pay for child care, including registration fees.

For more information or to apply please click the logo.

Page 1/1, 1 - 4 of 4



When hovering over the ERDC Logo, users will be able to view a brief ERDC Description.

When clicking on the ERDC Logo, users will be redirected to the ERDC page on the DELC's Website.



Caterpillar Clubhouse



Caterpillar Clubhouse  
118 E Main Street, Molalla OR 97038  
[View Map](#)  
(503) 759-7030

Regulation: Licensed Child Care Center  
License ID: CC502502

Capacity: 58  
Ages Served: 2 Months - 10 Years  
Monday - Friday 6:00am - 6:00pm

[Licensing & Compliance Report](#) [Program Details](#)

# Programs - ERDC Subsidy Referrals



Currently, FCCO shows an "ERDC Active" status for providers who:

- Are listed with ERDC, and
- Have recently been paid by DPU.

Soon, FCCO will show *all* ERDC Active providers who are open for referrals, even if they haven't received a DPU payment.

When families search for ERDC referrals in FCCO, they only see programs that are both **Accepting Referrals** *and* have the **"ERDC Active" status**.

# Updating Program Referral Status

Providers can review their current referral status and update it at any time through the FCCO Provider Portal or by contacting their Regional CCR&R.

## Your Referral Status

Accepting Referrals: Your program's contact information is visible to those seeking child care through FCCO.

Update Referral Status

The screenshot shows the FCCO Provider Portal interface. At the top, there is a navigation bar with 'Home' on the left and 'Welcome Valeria Anderson! Logout' on the right. Below the navigation bar, a message reads: 'If you are managing multiple provider accounts using the same login email, click here to switch to another provider.' The main content area features the 'Find Child Care OREGON' logo on the left and contact information for the 'Region: Washington' on the right. The contact information includes: 'Region Contact: Child Care Resource & Referral of Washington County', '1050 SW Baseline St. Suite C-1 Hillsboro, OR 97123', 'Phone (971) 223-6100', 'Toll Free (800) 624-9516', 'Email ccr@caowash.org', and 'Web www.caowash.org'. Below the contact information, there are tabs for 'Update Data', 'Pictures', 'View Profile', 'Consumer Ed', and 'Referral Counts'. A 'Your Referral Status' section is highlighted with a green border, containing the text 'Accepting Referrals: Your program's contact information is visible to those seeking child care through FCCO.' and an 'Update Referral Status' button. To the right of this section are 'Save' and 'Quick Review' buttons. At the bottom, a yellow banner states 'Last Update Approved: 3/22/2024'. A red arrow points from the 'Update Referral Status' button in the callout box to the corresponding button in the screenshot.

Home Welcome Valeria Anderson! Logout

If you are managing multiple provider accounts using the same login email, click here to switch to another provider.

**Find Child Care OREGON**

Region: Washington  
Region Contact: Child Care Resource & Referral of Washington County

1050 SW Baseline St. Suite C-1  
Hillsboro, OR 97123  
Phone (971) 223-6100  
Toll Free (800) 624-9516  
Email [ccr@caowash.org](mailto:ccr@caowash.org)  
Web [www.caowash.org](http://www.caowash.org)

Update Data Pictures View Profile Consumer Ed Referral Counts

**Your Referral Status**  
Accepting Referrals: Your program's contact information is visible to those seeking child care through FCCO.

Update Referral Status

Save Quick Review

Green colored fields are fields that a program can update. Schedule & Age Details tables may be updated but cannot be colored green.

Last Update Approved: 3/22/2024

# Updating Program ERDC Subsidy Status

Providers can also review their preferred ERDC Subsidy Status and update it at any time through the FCCO Provider Portal or by contacting their Regional CCR&R.

Welcome to Find Child Care Oregon

### Fees

Please enter the dollar amount for any fees that are required for a family to pay in order for their child to attend your program.

Registration Fee	Deposit
<input type="text"/>	<input type="text"/>
Materials/Book Fee	Charge of Transportation
<input type="text"/>	<input type="text"/>
Extra Charge for Meals	Activity Fee
<input type="text"/>	<input type="text"/>
Other Fee	
<input type="text"/>	

#### Program Financial Assistance

<input type="checkbox"/> Multi Child Discount	<input type="checkbox"/> Offers sliding fee scale
<input type="checkbox"/> Rates negotiable	<input type="checkbox"/> Offers scholarship
<input checked="" type="checkbox"/> Free to eligible clientele	<input type="checkbox"/> Parent co-op
<input type="checkbox"/> No rates - not market care	

#### ERDC Subsidy

<input type="checkbox"/> Accepting ERDC	<input type="checkbox"/> Relative Care Only
<input checked="" type="checkbox"/> Not Accepting ERDC	<input type="checkbox"/> Willing to become ERDC Listed

Previous Next Close

### ERDC Subsidy

Accepting ERDC

Relative Care Only

Not Accepting ERDC

Willing to become ERDC Listed



# Agency and Program Updates

# New DELC Web Page: Federal Updates



DELC created a new page on our website to communicate activity and changes at the federal level. This page will be updated with ongoing developments as needed by our newly created Incident Response Team, comprised of subject matter experts conducting policy and budget analysis across the agency.

**To visit our federal updates page, please visit:**

<https://www.oregon.gov/delc/Pages/federal-changes.aspx>

## DELC Updates on Federal Changes

At the Department of Early Learning and Care (DELC), we aim to ensure that every child, family, and provider feels safe, respected, and supported.

At DELC our mission, vision, and values reflect this inclusive approach and are central to what we do. DELC's seven core values are: Equity, Respect, Trust, Relationships, Safety, Continuous Improvement, and Integrity. These values help anchor the agency during uncertain times and ground us in carrying out our responsibilities.

We know there are a lot of questions about how actions at the federal level might impact our agency and the programs and people we support. While we may not always have answers, DELC has created this page as a source of information for the public regarding ongoing federal developments.

It is also available on the top right of the DELC website navigation bar.

# Certified Outdoor Nature-Based (ONB) Child Care Programs-Coming 7/1/2025



## What is an ONB Program?

- Serves preschool through school-age children
- Operates primarily outdoors (can use indoor bathrooms/kitchens)
- Uses a philosophy where nature is central to children's learning



## Inspections

- ✓ Pre-certification consultation from CCLD
- ✓ Environmental health specialist (sanitation inspection)
- ✓ **May** require fire code official inspection
- ✓ Initial CCLD inspection and approval prior to operating

## Ratios & Group Size

**Preschool-age:** 1:8 children, with a maximum group size of 16.

**School-age** 1:10 children, with a maximum group size of 20.

- Some activities require lower staff-to-child ratios.



## Access to Natural Space

- Must have access to 4,000 square feet/child (one acre=10 children)
- Outdoor "classroom" must be 75 square feet/child
- Must have a permanent location

For more information, please contact your regional licensing office.

# 2024 Market Price & Supply Study Report



The Oregon Market Price and Supply Study (MPSS) identifies child care prices and the geographic distribution of these prices across the state.

Thank you for participating in 2024!

You can find the 2024 study results on Oregon State University's website:

<https://health.oregonstate.edu/early-learners/research/oregon-child-care-market-price-study-2024>

# Thank you for joining us!

Please complete our survey to share your feedback and ideas for future information sessions.

You can subscribe to the **Child Care Update** newsletter and receive the latest information from us:

<https://delcnews.org/child-care-update/>

