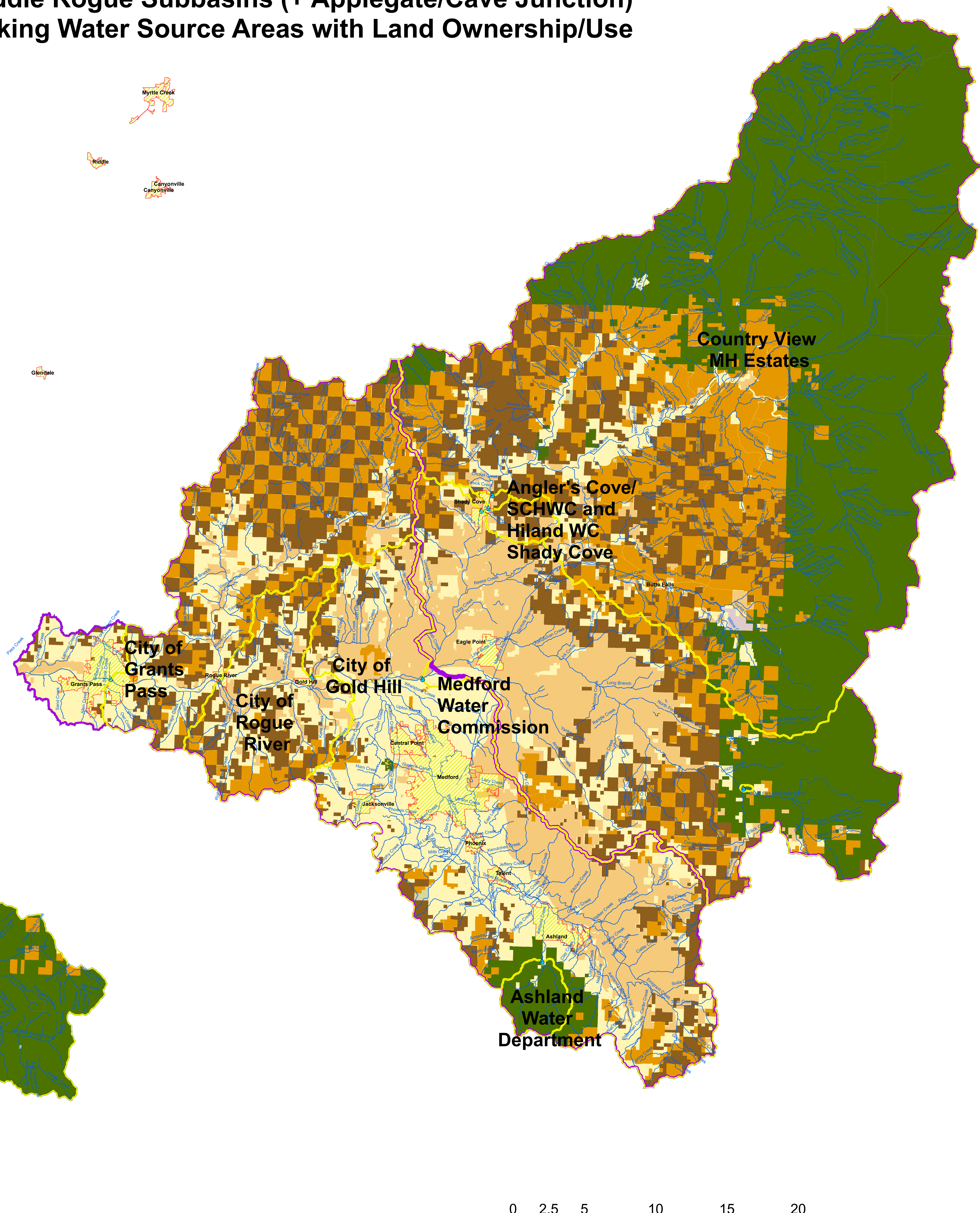
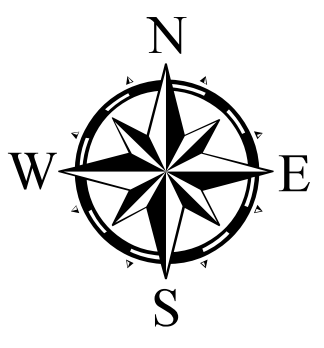


# Upper and Middle Rogue Subbasins (+ Applegate/Cave Junction) Drinking Water Source Areas with Land Ownership/Use



**Legend**

**Surface Water Intake**

- ◆ Active
- ◇ Inactive/Emergency
- ◇ Proposed

Surface water Drinking Water Source Area

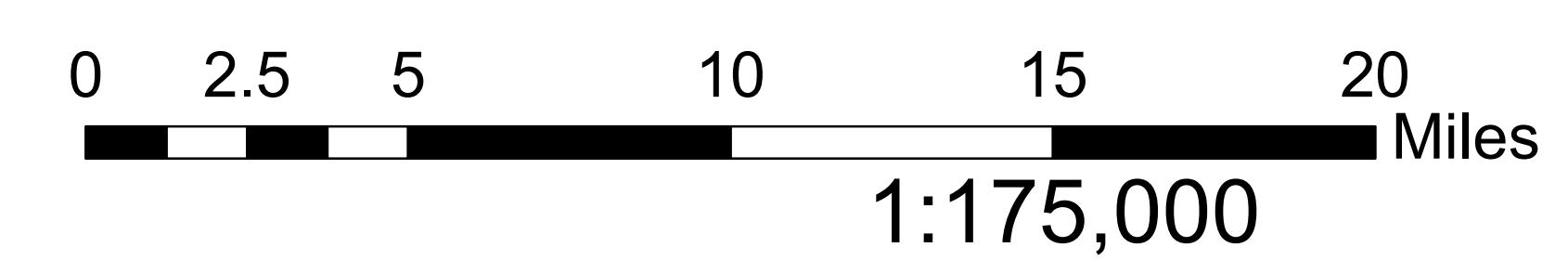
RogueUpperMiddleHUC8

**Land Ownership (multiple datasets 22JUN2017)**

**PROPERTY\_S**

- Private Urban Lands (within city limits)
- Private Rural Lands (private non-industrial outside city limits)
- Agriculture (Ag Zoning (BLM) and NASS 2013)
- Private Industrial Forests (ODF data); Lands Managed by Private Industry (BLM)
- Local Government
- State Dept. of Forestry
- State - Other
- Bureau of Land Management
- U.S. Forest Service
- Federal - Other
- Bonneville Power Administration
- Bureau of Indian Affairs
- Undetermined
- Water

See Figures 4b & 4c.



This product is for informational purposes and may not have been prepared for, or be suitable for, legal, engineering or surveying purposes. Users of this information should review and consult the primary data and information sources to ascertain the usability of the information. DEQ's Drinking Water Protection Program can provide information on how the queries were performed. It is important to understand the limitations and qualifications of queries to ensure appropriate interpretation of this data. No warranty expressed or implied is made regarding the accuracy or utility. This disclaimer applies both to individual use of the data and aggregate use with other data.

