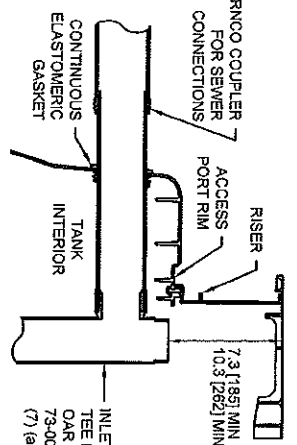
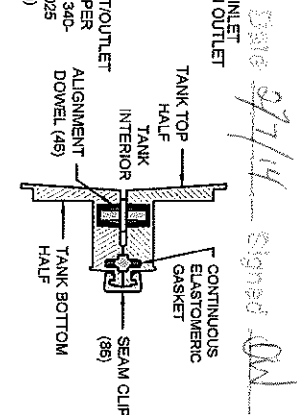


TANK EXTERIOR	
LENGTH	175.6 (4.460)
WIDTH	61.7 (1.567)
HEIGHT	54.5 (1.384)

Ⓐ PIPE PENETRATION SECTION DETAIL



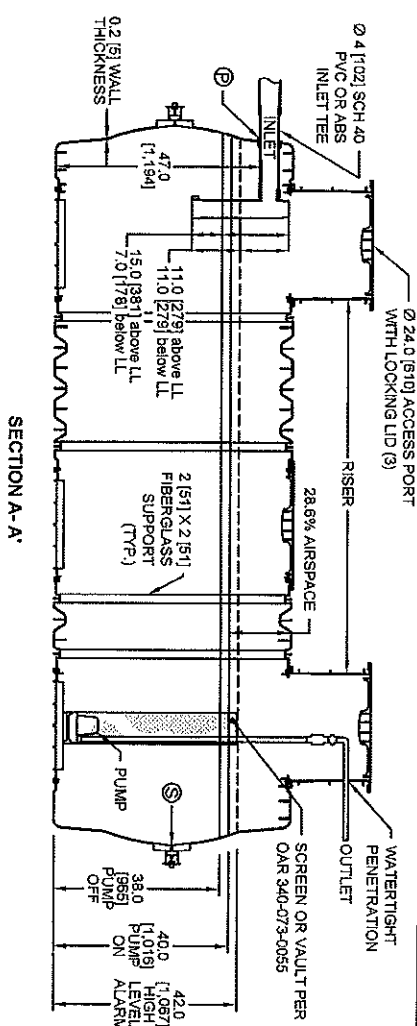
Ⓑ MID-HEIGHT SEAM SECTION DETAIL



VOLUME PARAMETERS	
TOTAL CAPACITY	1,765 gal (6,687 L)
PRIMARY VOLUME*	1,808 gal (6,887 L)
INCREMENTAL VOLUME (average)	32.4 gal/in (48.3 L/cm)

STRUCTURAL DESIGN LOADS	
HYDRAULIC	62.4 psf
HYDROSTATIC	62.4 psf
EARTH	600 psf
WHEEL LOAD	2,500 lbs

WITH 3 FT OF COVER TANK IS NOT TRAFFIC RATED



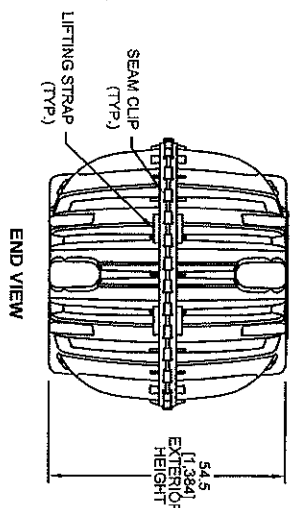
DOSING ASSEMBLIES PER OAR 340-073-0055:

PUMP ON, OFF AND HIGH LEVEL SWITCH HEIGHTS SHOWN FOR FOUR BEDROOM RESIDENCE WITH MAXIMUM DESIGN DAILY FLOW OF 450 GALLONS PER DAY.

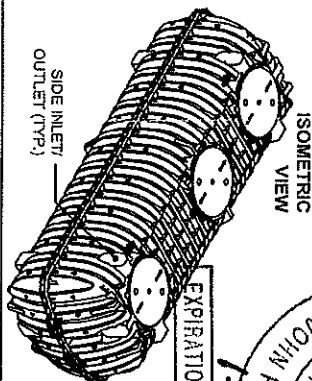
HIGH LEVEL SWITCH CONNECTED TO AUDIBLE AND VISUAL ALARM.

MINIMUM 3% DESIGN FLOW STORAGE PROVIDED BETWEEN HIGH LEVEL ALARM SWITCH AND INLET INVERT (150 GAL REQUIRED, 165 GAL PROVIDED).

MAXIMUM 20% DESIGN FLOW PER PUMP DOSE (90 GAL MAX. ALLOWABLE PER DOSE PROVIDED).



- NOTES:
- TANK NOT RATED FOR VEHICULAR TRAFFIC. A 2500-LB WHEEL LOAD IS THE MAXIMUM CAPACITY.
 - ALL RESIN USED IS COMPLIANT WITH IAPMO STANDARDS. THE TANK WILL BE IAPMO CERTIFIED.
 - TANK MARKINGS INCLUDE: MANUFACTURER NAME, MODEL NUMBER, DATE OF MANUFACTURE, LIQUID CAPACITY, MAXIMUM BURIAL DEPTH, INLET, AND OUTLET.
 - EXTERIOR OF ACCESS OPENING LID INCLUDES THE FOLLOWING WARNING WRITTEN IN ENGLISH, FRENCH & SPANISH: "DANGER DO NOT ENTER: POISON GASES."
 - MAXIMUM BURIAL DEPTH IS 36 IN (914 mm), MINIMUM BURIAL DEPTH IS 6 IN (152 mm).
 - ALL DRAWING DIMENSIONS IN INCHES (MILLIMETERS) UNLESS OTHERWISE NOTED.
 - SEE INSTALLATION INSTRUCTIONS PROVIDED AT: www.infiltratorsystems.com.
 - A WATERTIGHTNESS TEST IS REQUIRED PER OAR 340-073-0025(7). TESTING SHALL BE CONDUCTED BY FILLING THE TANK TO A POINT AT LEAST 2 INCHES ABOVE THE POINT OF RISER CONNECTION TO THE TOP OF TANK. DURING THE TEST THERE MAY BE NO MORE THAN A ONE-GALLON LEAKAGE OVER A 24-HOUR PERIOD.
 - INLET AND OUTLET FITTINGS MUST BE INSTALLED PER OAR 340-73-0025(7).
 - THE RISER COVER IS LESS THAN 50 POUNDS.
 - REFER TO INSTALLATION INSTRUCTIONS FOR EXCAVATION, BEDDING AND BACKFILLING REQUIREMENTS.
 - ANTI-BUOYANCY CONTROL MEASURES MAY BE REQUIRED TO RESTRAIN THE TANK IN CONDITIONS WHERE GROUNDWATER IS HIGHER THAN 36 IN (914 mm) ABOVE THE BOTTOM OF THE TANK AND BACKFILL OVER THE TANK WILL BE LESS THAN 12 IN (305 mm) DEEP. REFER TO TANK INSTALLATION INSTRUCTIONS FOR CONTROL MEASURE OPTIONS AND DETAILS.



REGISTERED PROFESSIONAL ENGINEER

JOHN REESE LEAVITT

EXPIRATION DATE: 12-31-2014

LEAVITT & ASSOCIATES ENGINEERS, INC. STRUCTURAL * CIVIL SURVEYING

1321 FIRST STREET SOUTH, SUITE 2000 DUNSMITH, OREGON 97003-4000

INFILTRATOR TANKS

INFILTRATOR SYSTEMS INC.

4 Business Park Rd. Old Saybrook, CT 06475

(800) 221-4436

Oregon IM-1530

1-Compartment Dosing Septic Tank

Drawn by: JLB	Date: 10/08/2013
Scale: TO SCALE	Sheet: 1 of 2
Checked by: DJL	

PLAN APPROVED

RISER AND LID CONNECTION

DETAILED PRODUCT SPECIFIC RISER AND LID CONNECTION GUIDANCE IS AVAILABLE FROM INFILTRATOR SYSTEMS AT:

www.infiltrator.com

THE IM- AND TM-SERIES TANK RISER CONNECTION GUIDANCE DOCUMENT PROVIDES A FULL DESCRIPTION OF THE CONNECTION TYPE AND METHOD FOR EACH COMPATIBLE RISER.

COMPATIBLE RISER AND LID PRODUCTS

THE INFILTRATOR IM-1530 TANK IS COMPATIBLE WITH 24 in (609 mm) DIAMETER RISER AND LID PRODUCTS FROM THE FOLLOWING MANUFACTURERS:

- TIV RISER SYSTEM BY INFILTRATOR
- TUF-TITE CORPORATION
- POLYLOK INC.
- EZSET BY INFILTRATOR

THE FOLLOWING 24 in (609 mm) DIAMETER PIPE PRODUCTS ARE ALSO COMPATIBLE WITH THE INFILTRATOR IM-1530 TANK WHEN USED WITH AN INFILTRATOR PIPE ADAPTER RING:

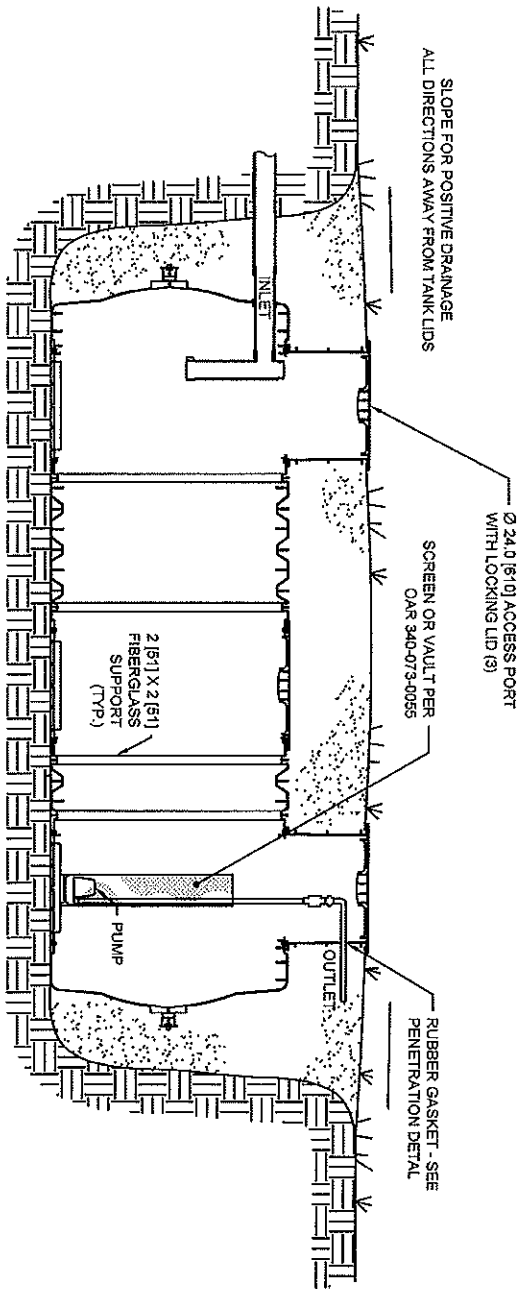
- IPEX ULTRA-RIB POLYVINYL CHLORIDE (PVC) PIPE - USE THE INFILTRATOR LID, POLYLOK 24 in (609 mm) HEAVY DUTY COVER 24 in (609 mm) JACKET SEPTIC TANK RISER COVER, OR EQUIVALENT PRODUCT AS A LID FOR THE IPEX PVC PIPE
- CORRUGATED HIGH-DENSITY POLYETHYLENE (HDPE) PIPE - USE THE INFILTRATOR LID, EZSET LID BY INFILTRATOR, POLYLOK 24 in (609 mm) X 9.5 mm HEAVY DUTY COVER, ROTOSOLUTIONS 24 in (609 mm) SEPTIC LID, 24 in (609 mm) JACKET SEPTIC TANK RISER COVER OR EQUIVALENT PRODUCT AS A LID FOR THE HDPE PIPE

RISER CONNECTION AT TANK - GENERAL PROCEDURES

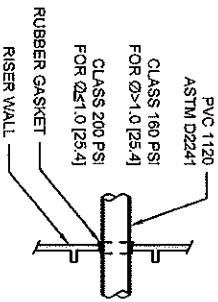
1. REFER TO INFILTRATOR SYSTEMS INC.'S IM- AND TM-SERIES TANK RISER CONNECTION GUIDANCE DOCUMENT FOR SPECIFIC RISER CONNECTION INFORMATION.
2. APPLY ISI 1500 ADHESIVE SEALANT OR EQUIVALENT BETWEEN RISER PARTS AND TANK AS SHOWN IN INFILTRATOR SYSTEM INC.'S IM- AND TM-SERIES TANK RISER CONNECTION GUIDANCE DOCUMENT.
3. ENSURE THAT ALL CONNECTION SURFACES ARE CLEAN AND DRY.
4. THE INSTALLER MUST USE DISCRETION IN DETERMINING THE BEAD SIZE AND AMOUNT OF SEALANT NEEDED TO CRAFT AND MAINTAIN A WATERTIGHT SEAL.
5. KEEP SEALANT AT A TEMPERATURE THAT MAINTAINS ITS WORKABILITY. KEEP IT FREE FROM DIRT AND DEBRIS THAT MAY COMPROMISE A WATERTIGHT SEAL.
6. WHEN APPLYING SEALANT TO A PART, ENSURE CONTINUOUS APPLICATION TO AVOID GAPS THAT MAY CAUSE LEAKS. APPLY AN ADEQUATE QUANTITY TO ENSURE A SEALED CONNECTION.
7. PHYSICALLY PRESS THE SEALANT ONTO THE PART TO ENSURE THAT IT STAYS PROPERLY POSITIONED DURING ASSEMBLY.
8. ENSURE THAT ALL SCREENS SUPPLIED WITH RISER PRODUCTS ARE INSTALLED FOR CONNECTION OF ADAPTER RINGS, RISERS AND LIDS. DO NOT OVERTIGHTEN SCREENS. THIS MAY DAMAGE THE PLASTIC PARTS BEING CONNECTED, CAUSING THE SCREEN/CONNECTION TO FAIL. THIS MAY ALSO STRIP THE SCREW HEAD. USE THE 304 STAINLESS STEEL SCREENS.

WATERTIGHTNESS TESTING

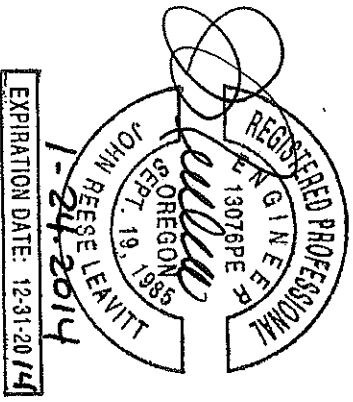
1. CONDUCT WATER TIGHTNESS TESTING PER QAR 340-73-0025(9).
2. THE INSTALLER MUST TEST EACH TANK FOR WATERTIGHTNESS BY FILLING THE TANK TO A POINT AT LEAST 2 INCHES ABOVE THE POINT OF RISER CONNECTION TO THE TOP OF TANK.
3. DURING THE TEST, THERE MAY BE NO MORE THAN ONE GALLON OF LEAKAGE OVER A 24-HOUR PERIOD.



TANK AND RISER INSTALLATION




RISER PENETRATION GASKET DETAIL




PLAN APPROVED

Date 2/7/14 signed *OR*



LEAVITT & ASSOCIATES
ENGINEERS, INC.
STRUCTURAL & CIVIL
SURVEYING

1234 FIRST STREET SOUTH, SUITE 200, PORTLAND, OREGON 97204
PHONE (503) 453-7870 FAX (503) 453-7880



INFILTRATOR
tanks

INFILTRATOR SYSTEMS INC.	
4 Business Park Rd. Old Saybrook, CT 06475	
(800) 221-4436	
Oregon IM-1530	1-Compartment Dosing Septic Tank
Riser Installation Configuration	
Drawn by: JLB	Date: 10/08/2013
Scale: NOT TO SCALE	Checked by: DJL Sheet: 2 of 2