



State of Oregon
Department of
Environmental
Quality

DEQ Portland Harbor Upland Source Control Status



November 24, 2014

Presented by:

Keith Johnson, Cleanup Program
Manager

What is Source Control

2

What is “source control”?

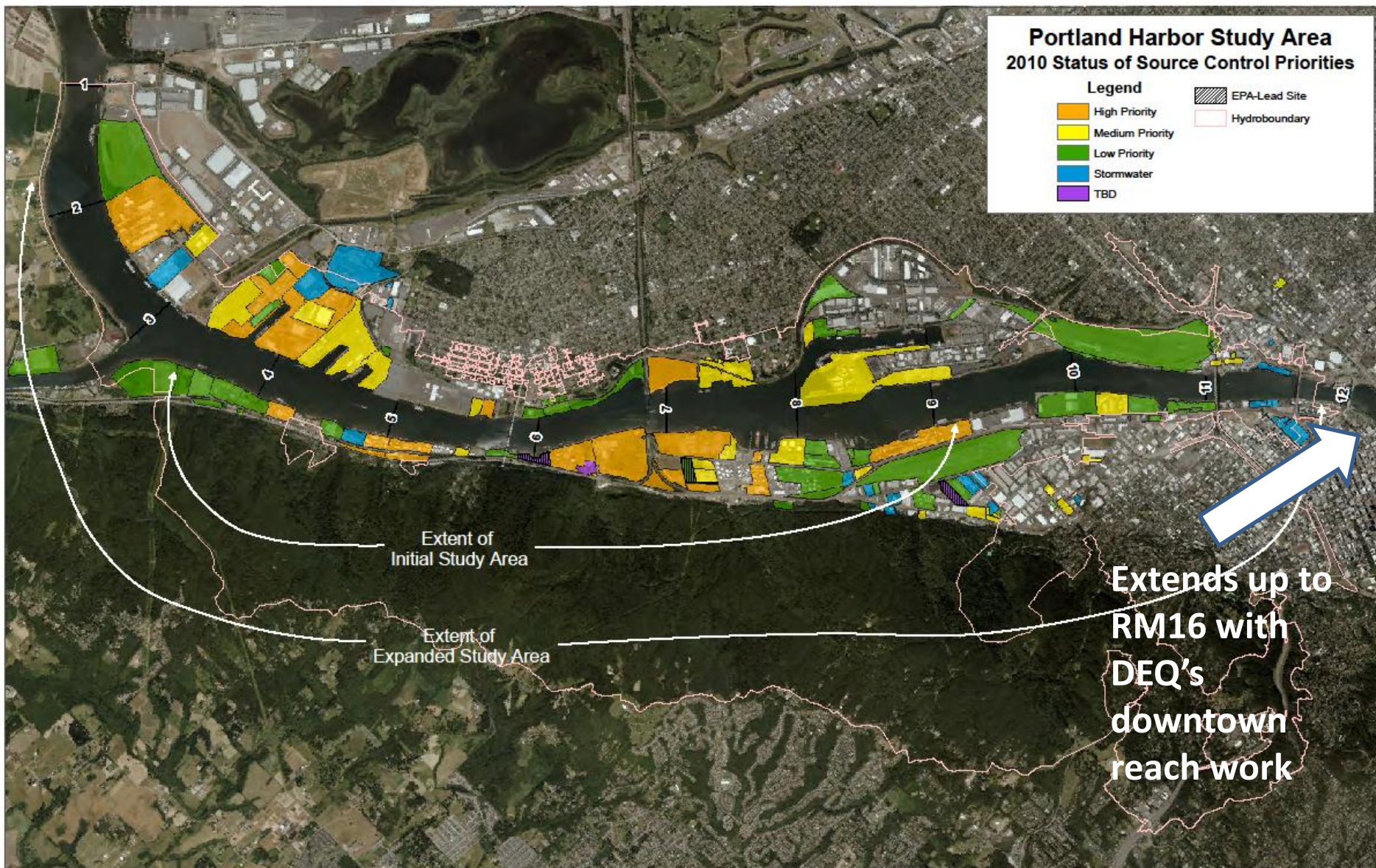
- Cleaning up soils and banklines near the river
- Cutting off/treating contaminated groundwater
- Cleaning up or removing stormwater discharges

Done as part of MOU with EPA and Partners

What is the goal of DEQ’s source control work?

- Eliminate active discharges to the river
- Ensure future sediment cleanups do not become recontaminated

Current Source Control Scope



Relationship to the EPA Cleanup

4

Work is collaborative

- MOU identifies roles for EPA and partners review and support
- Informed by and coordinated with progress and information from EPA-led work in the river
- Work is paid for and performed by parties in Harbor under voluntary and enforceable orders

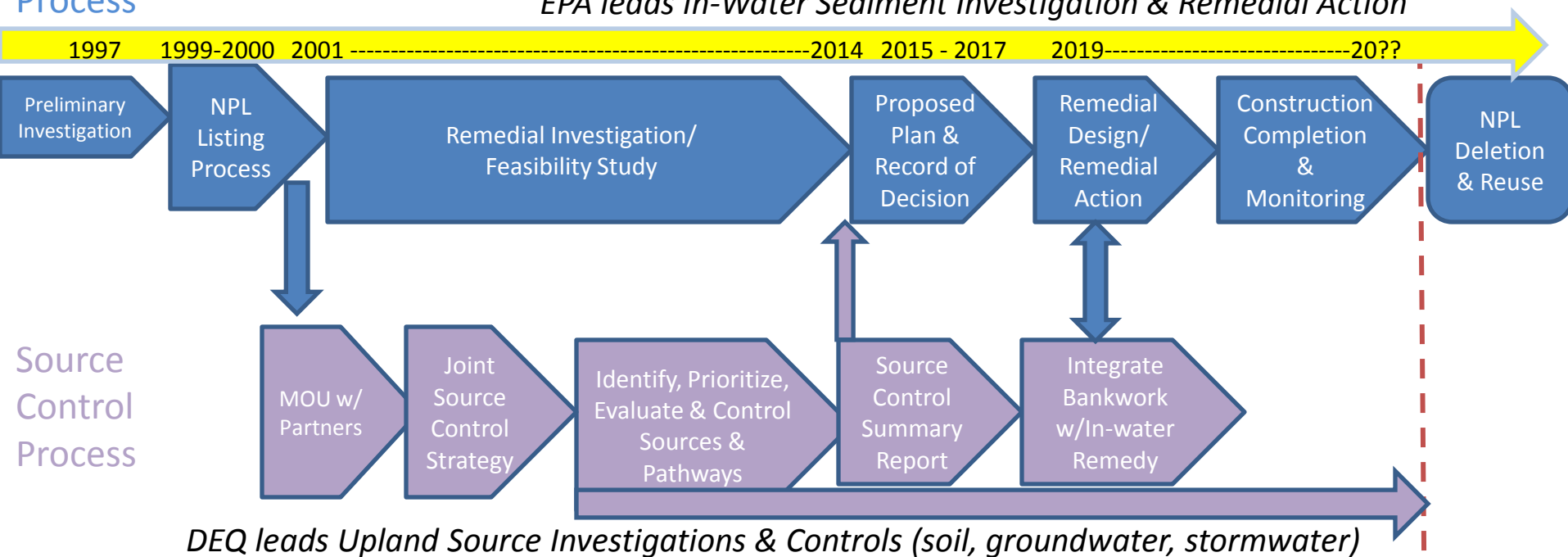
Timing is Everything

- Source control work must be complete before the adjacent sediment cleanups begin (or in some cases integrated with sediment cleanups)

In-Water and Upland Source Control Schedules

CERCLA Process

EPA leads In-Water Sediment Investigation & Remedial Action



Status of Source Control Work

- DEQ tracking approximately **170** sites in the Study Area
- **14** are High Priority (immediate action required) and all have taken some action;
- Approximately **40** are Medium Priority (moderate risk and/or need more information)
- **120** are Low Priority (cleanup already, no pathway or no reason to suspect)
- Of the above sites, approximately **100** have finished source control efforts or were determined not to be a source.
- Remaining **70** sites are underway or nearing completion of source control activities

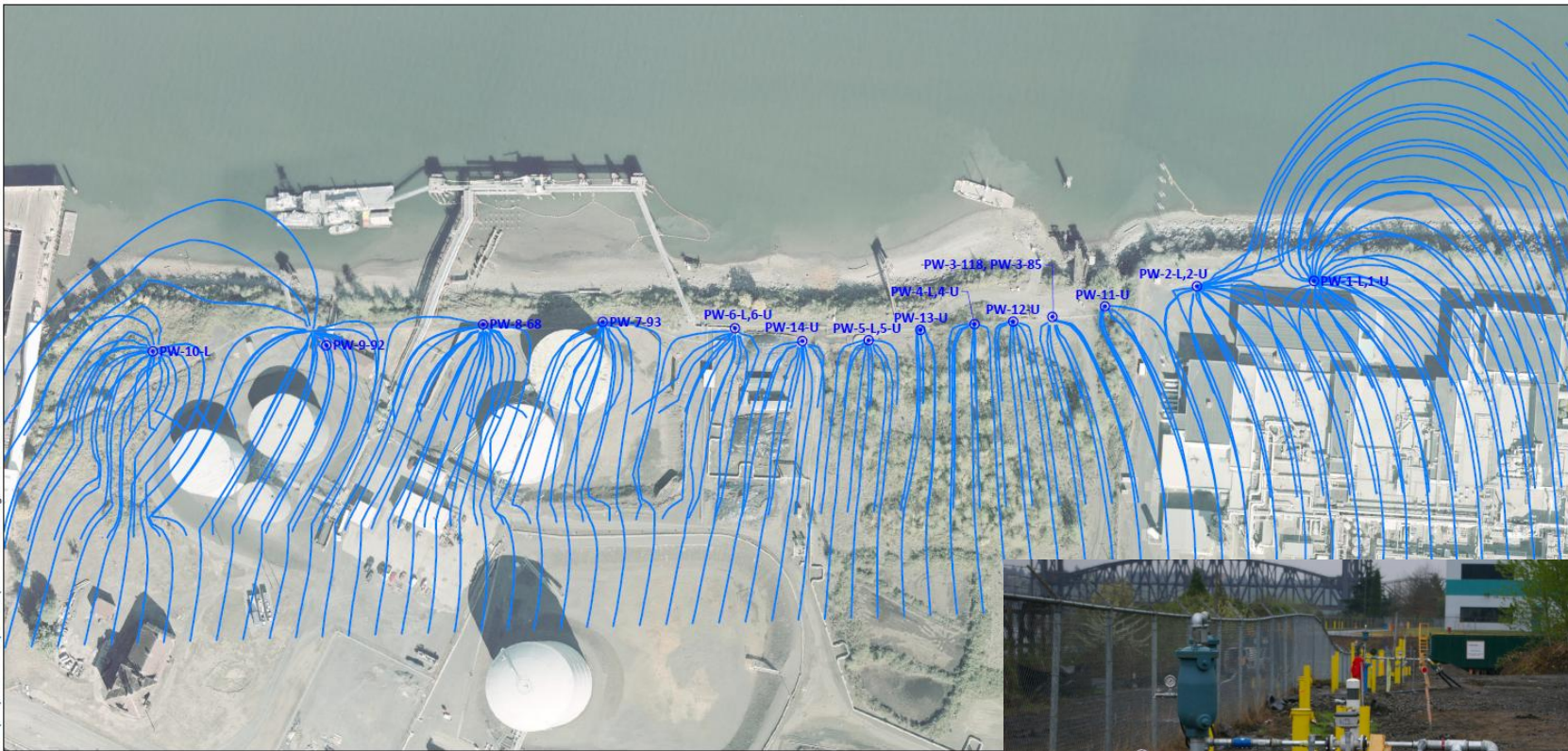
Arkema Groundwater Barrier Wall Installation





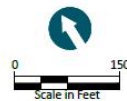
State of Oregon
Department of
Environmental
Quality

Controlling GW at Gasco



LEGEND:

- ⊙ Pumping Well
- Partial Path in Alluvium





State of Oregon
Department of
Environmental
Quality

City of Portland Stormwater Outfalls Investigation



39 outfalls in
Study area

Basin 44 manhole



State of Oregon
Department of
Environmental
Quality

ARCO/BP Seawall and Riverbank Cleanup



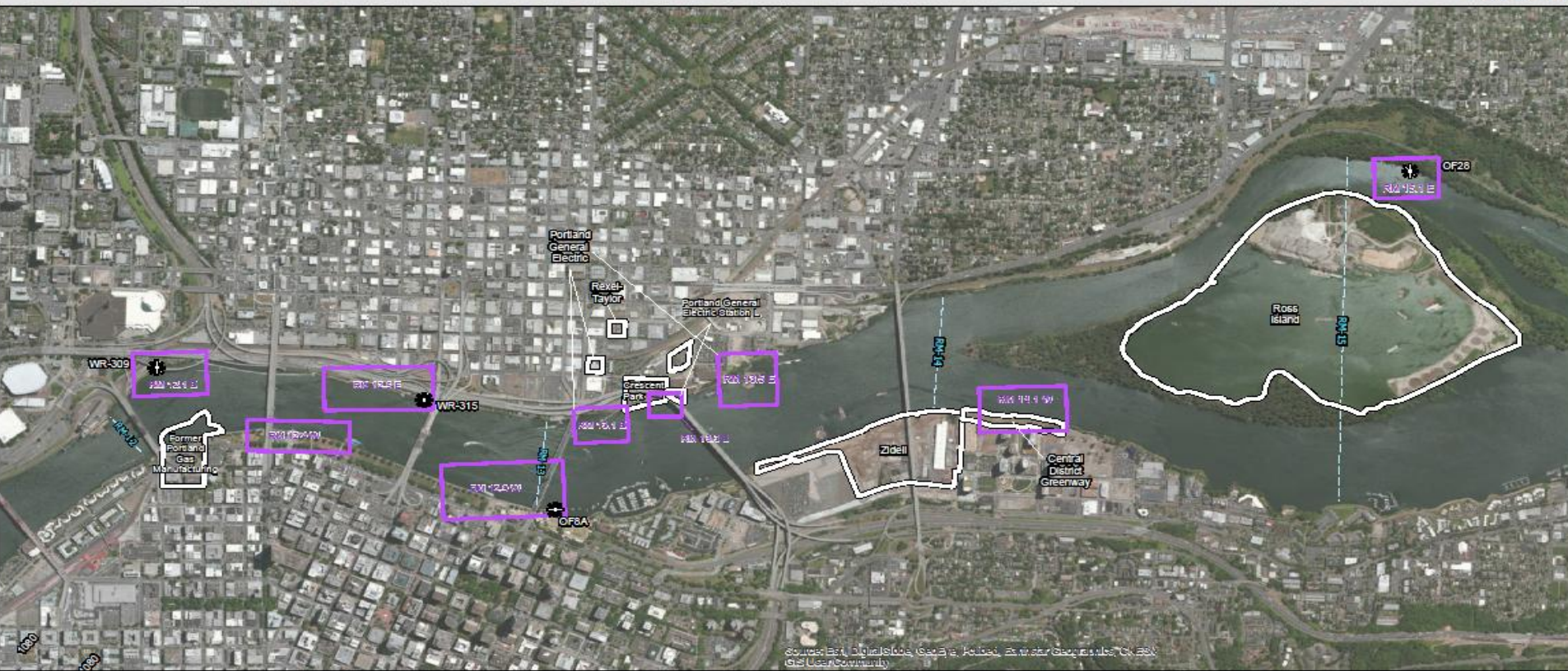
Bankline Stabilization at Gunderson



Source Control and Cleanup in the Downtown Reach

12


Figure 4.7



UPSTREAM SEDIMENT AND UPLAND SITES

 Downtown Reach Sediment Investigation Focus Areas

 Site Boundary

 Outfall Location



Environmental Cleanup Sites from DEQ Environmental Cleanup Site Inventory (ECSI) database. Basemap from Metro GIS. Outfalls from City of Portland GIS. Map Produced November 13, 2004

Downtown Reach conclusions

1. The most contaminated sites have been identified and cleanups completed or underway
2. No significant on-going upland sources
 - Contaminated sediment is primarily the result of historical releases
 - Majority of municipal stormwater draining to this reach has been redirected to the Columbia Blvd Treatment facility
3. Contamination is small relative to PH
4. Area is not a recontamination threat to PH and should not delay remedy implementation



State of Oregon
Department of
Environmental
Quality

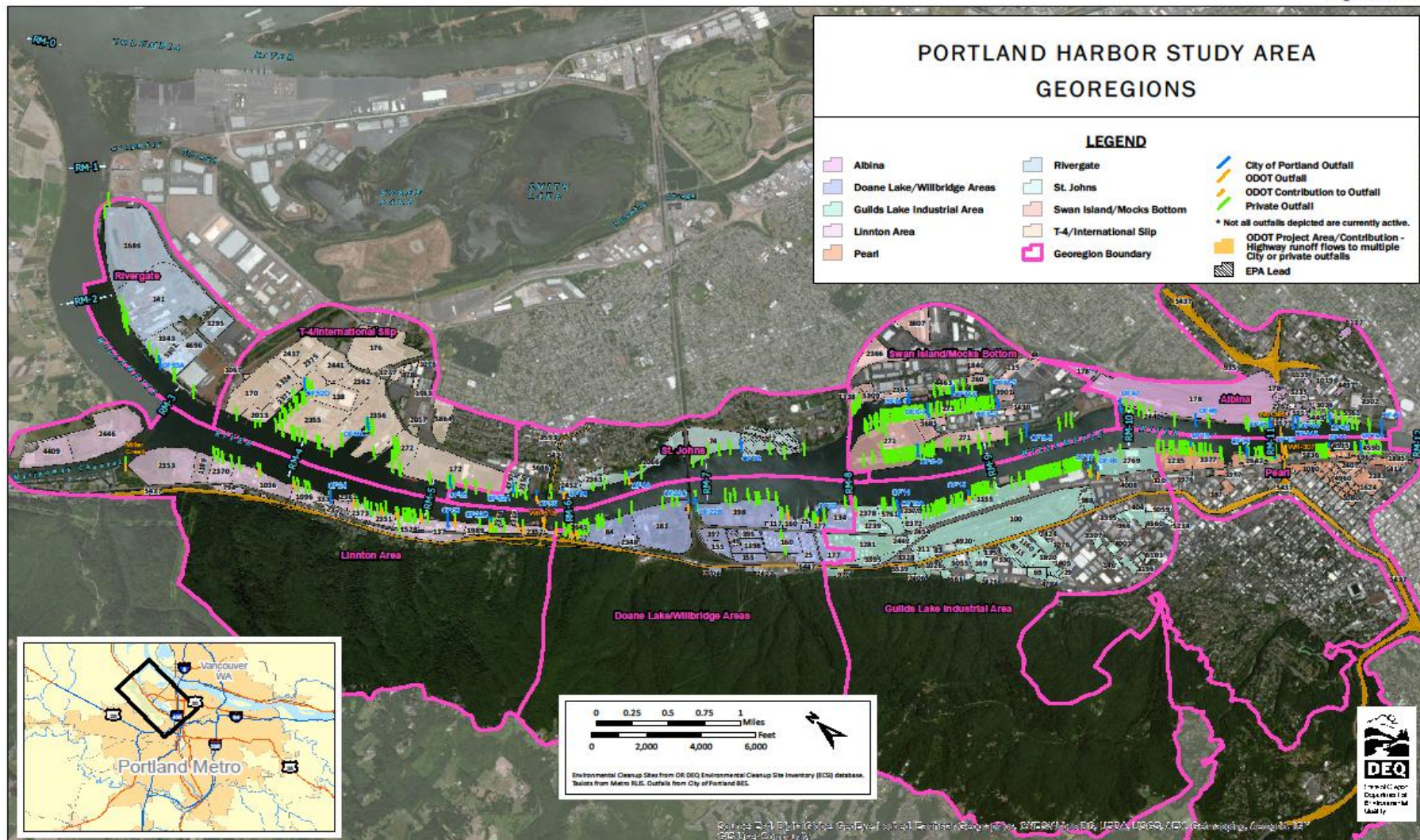
DEQ's Source Control Summary Report

14

- Delivered to EPA on Friday November 21st
- Identifies all work in progress, sources controlled and uncontrolled, and anticipated future work
- Organized by geographic regions
- Discusses potential for recontamination from all pathways to the river
- Effectiveness measures and schedules identified
- Will be available on DEQ's website

Geographic Regions

Figure 4.5.a





State of Oregon
Department of
Environmental
Quality

DEQ's Source Control Summary report conclusions

16

- Source control efforts (including future planned actions) in and upstream of the study area will prevent sediment recontamination and unacceptable risk to receptors from upland-related discharges.
- Implementation of future in-water remedial actions called for in EPA's future cleanup plan can proceed.

Priorities and Next Steps

- Continue working with all parties in the Study area and downtown reach to substantially control all sources before issuance of ROD
- Significant public involvement and outreach program to begin early 2015
- Continue to collaborate with EPA and partners on information needed for Proposed Plan and recontamination evaluation
- Design and implement cleanups at remaining downtown reach sites

Questions?

For more information regarding DEQ source control efforts, please contact:

Keith Johnson, DEQ Cleanup program manager
503-229-6431

Johnson.keith@deq.state.or.us

Or

Matt McClincy, DEQ Source Control Coordinator
503-229-5538

McClincy.matt@deq.state.or.us