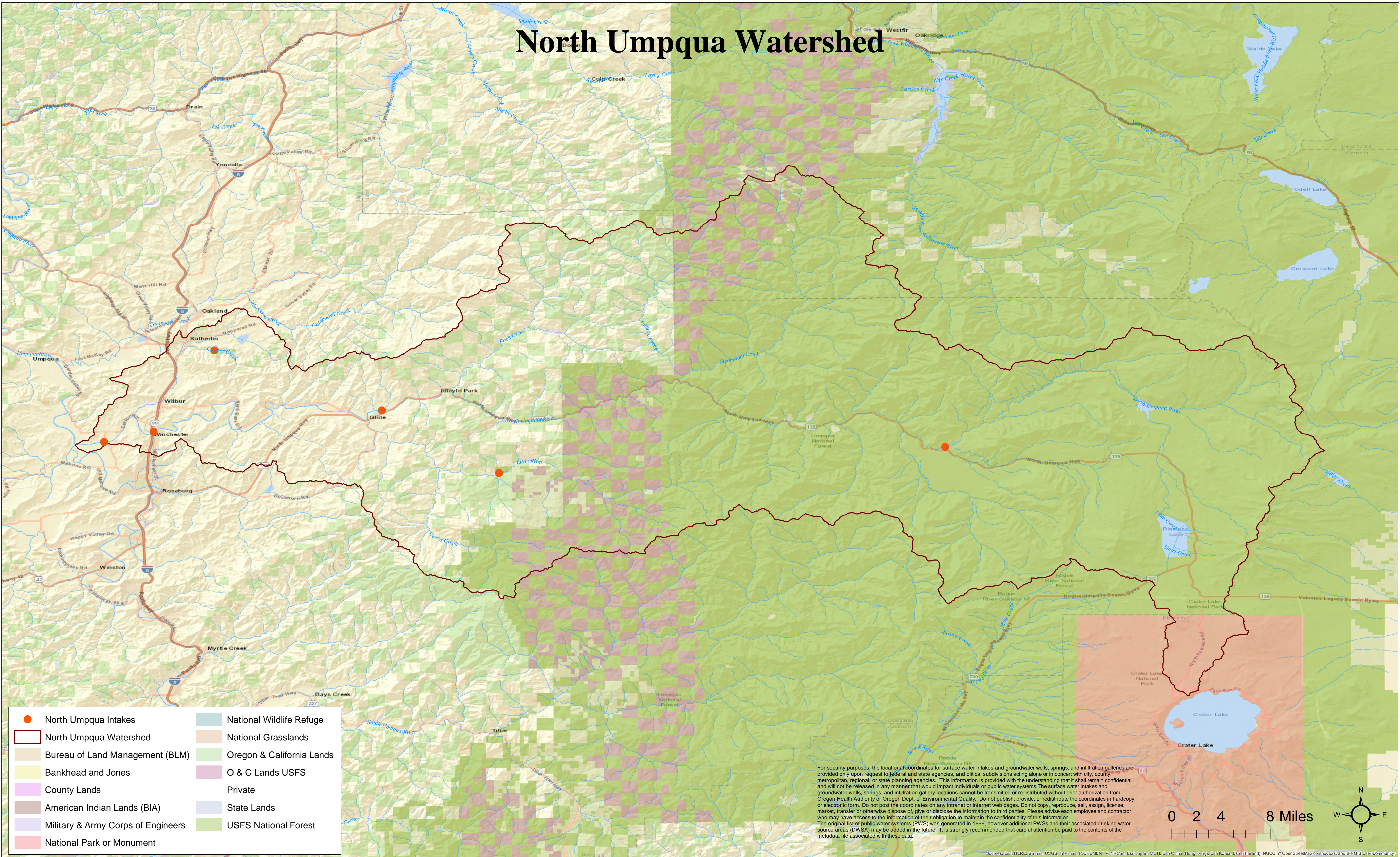


North Umpqua Watershed



- North Umpqua Intakes
- North Umpqua Watershed
- Bureau of Land Management (BLM)
- Bankhead and Jones
- County Lands
- American Indian Lands (BIA)
- Military & Army Corps of Engineers
- National Park or Monument
- National Wildlife Refuge
- National Grasslands
- Oregon & California Lands
- O & C Lands USFS
- Private
- State Lands
- USFS National Forest

For security purposes, the locational coordinates for surface water intakes and groundwater wells, springs, and infiltration galleries are provided only upon request to federal and state agencies, and local subdivisions acting alone or in concert with city, county, metropolitan, regional, or state planning agencies. This information is provided with the understanding that it shall remain confidential and will not be released in any manner that would impact individuals or public water systems. The surface water intakes and groundwater wells, springs, and infiltration gallery locations cannot be transmitted or redistributed without prior authorization from Oregon Health Authority or Oregon Dept. of Environmental Quality. Do not publish, provide, or redistribute the coordinates in hardcopy or electronic form. Do not post the coordinates on any intranet or internet web pages. Do not copy, reproduce, sell, assign, license, market, transfer or otherwise dispose of, give or disclose the information to third parties. Please advise each employee and contractor who may have access to the information of their obligation to maintain the confidentiality of this information. The original list of public water systems (PWS) was generated in 1999, however additional PWSs and their associated drinking water source areas (DWSA) may be added in the future. It is strongly recommended that careful attention be paid to the contents of the metadata file associated with these data.

0 2 4 8 Miles

