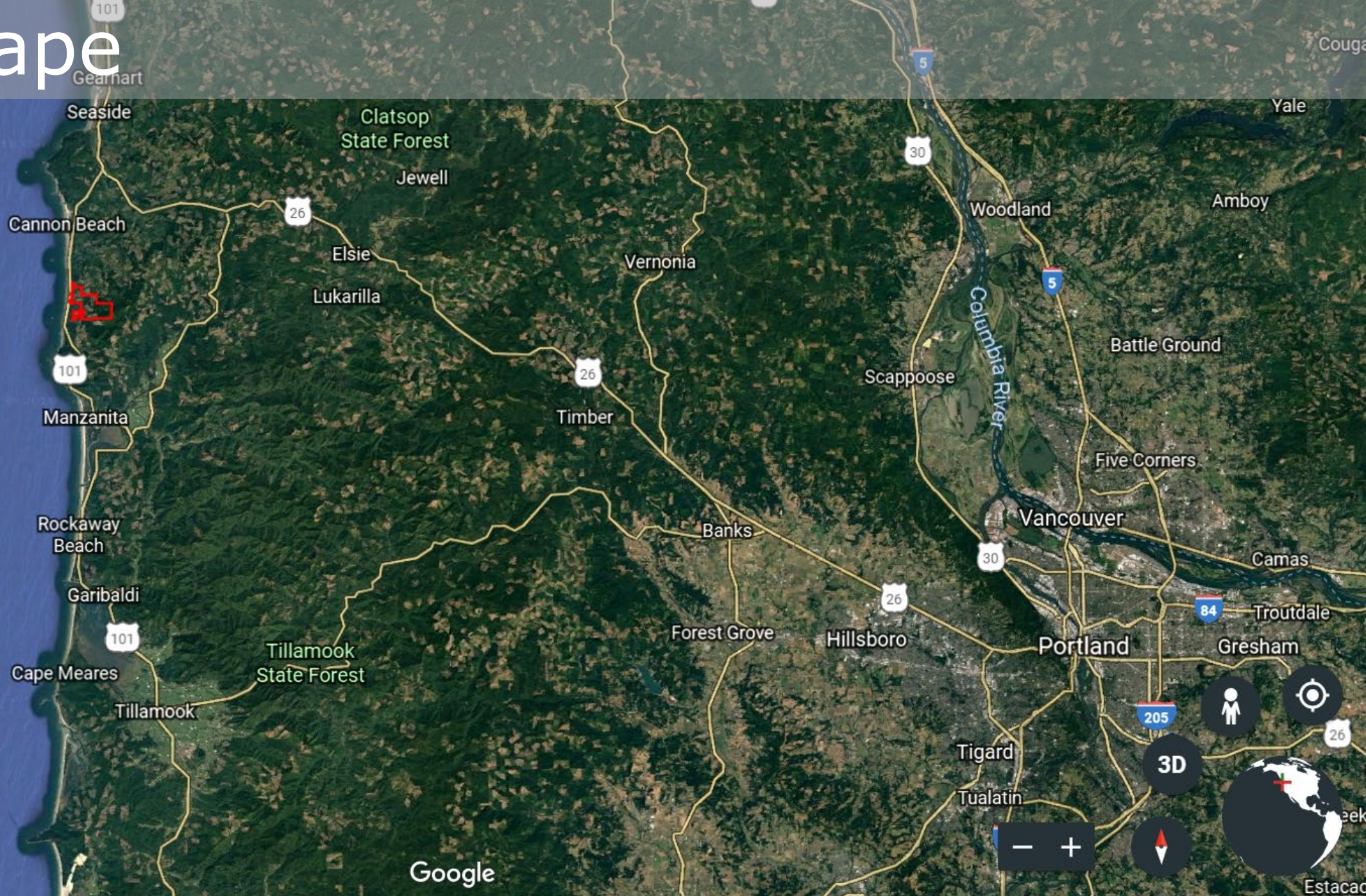


Financing Acquisition and Creation of a Community Forest for Drinking Water Management

Presentation to the Source Water Protection Workshop
Tillamook, December 12th 2018

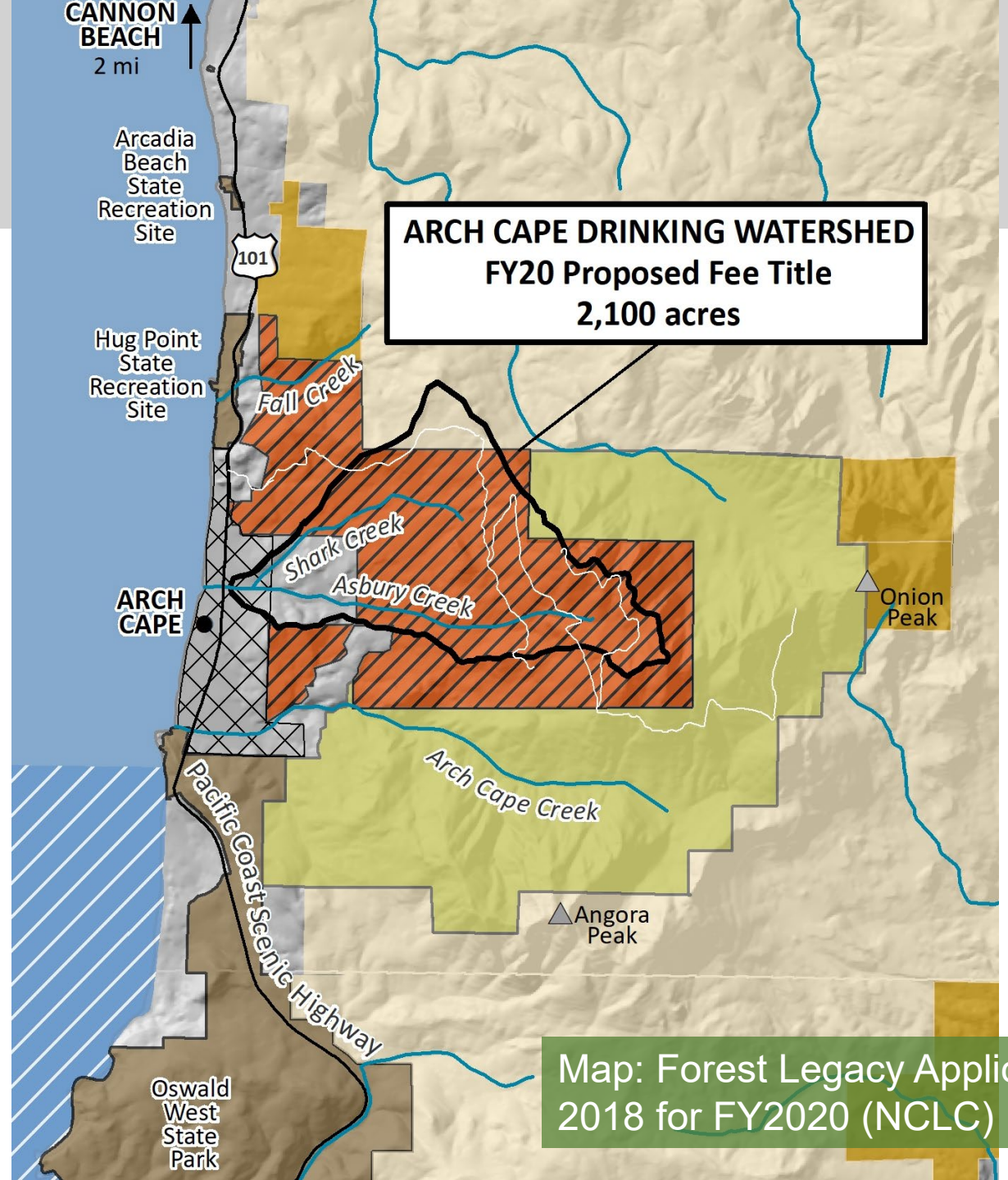


Arch Cape

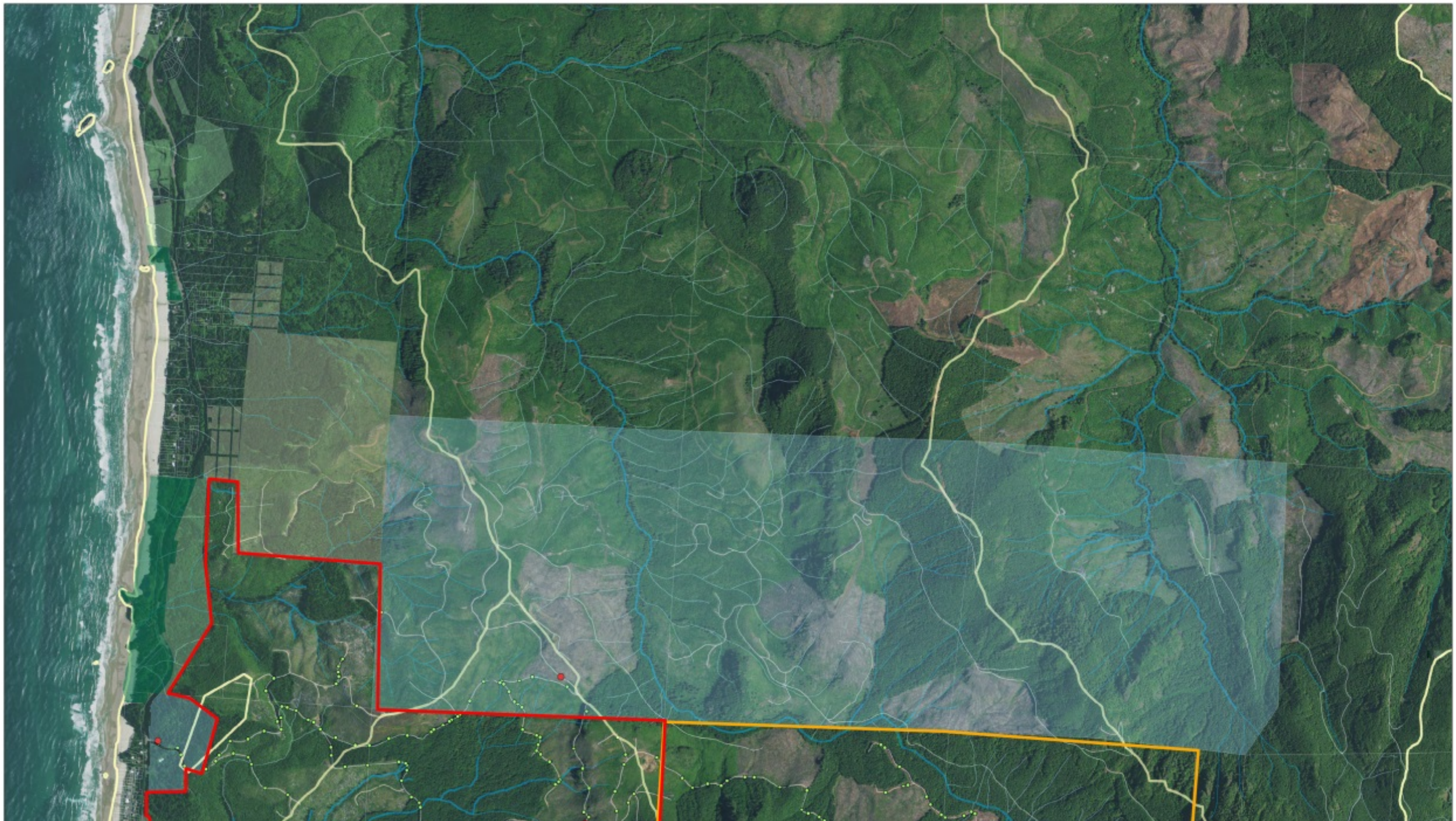


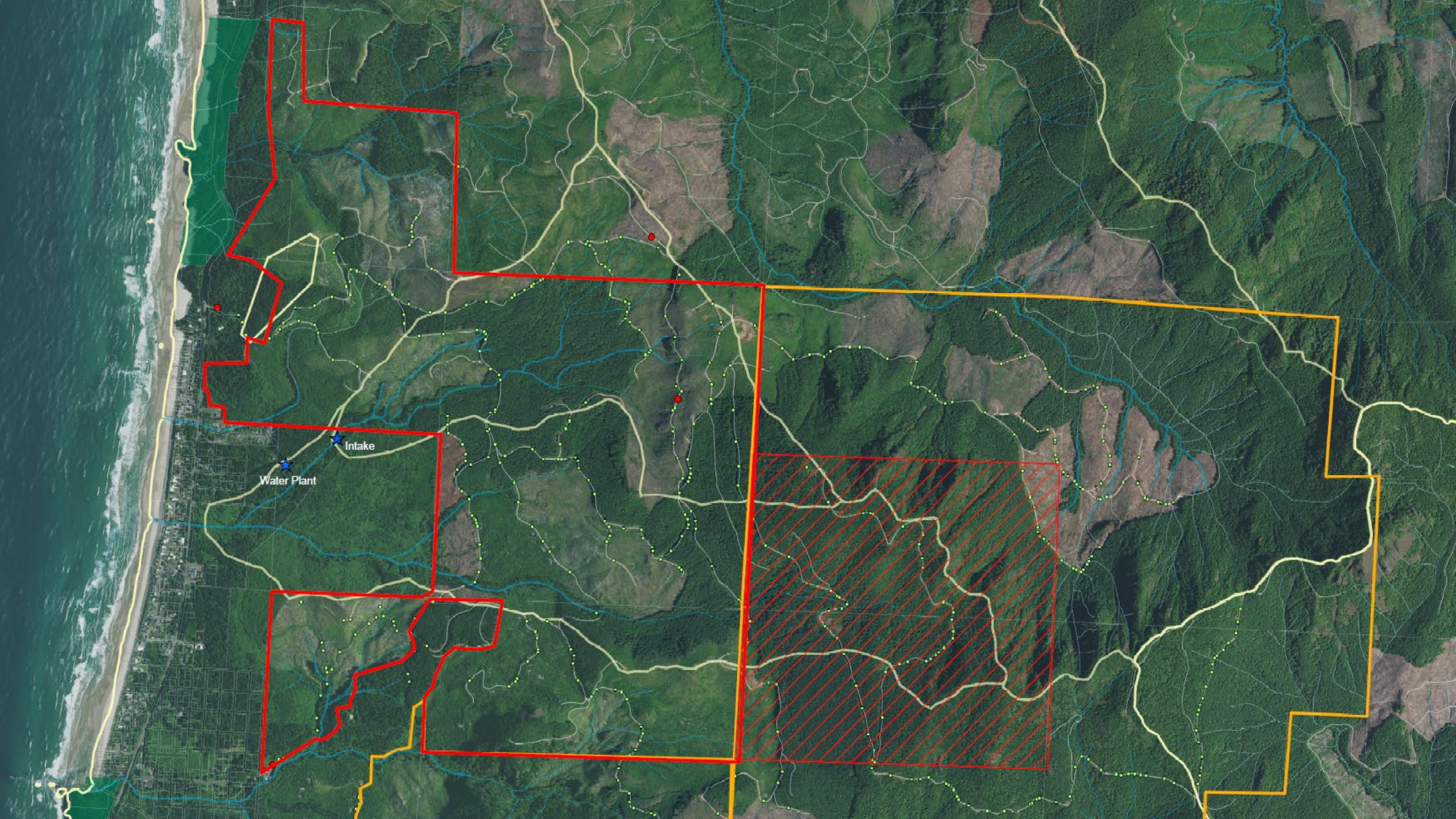
Google

PROJECT LOCATION



Map: Forest Legacy Application
2018 for FY2020 (NCLC)





Water Plant

Intake

Mission & Vision



- *Our vision is to provide clean, safe, and affordable drinking water to Arch Cape residents and visitors through the creation of a working, community-owned forest, to sustain the rich character and beauty of Oregon's coastal rainforest for generations.*

Watershed

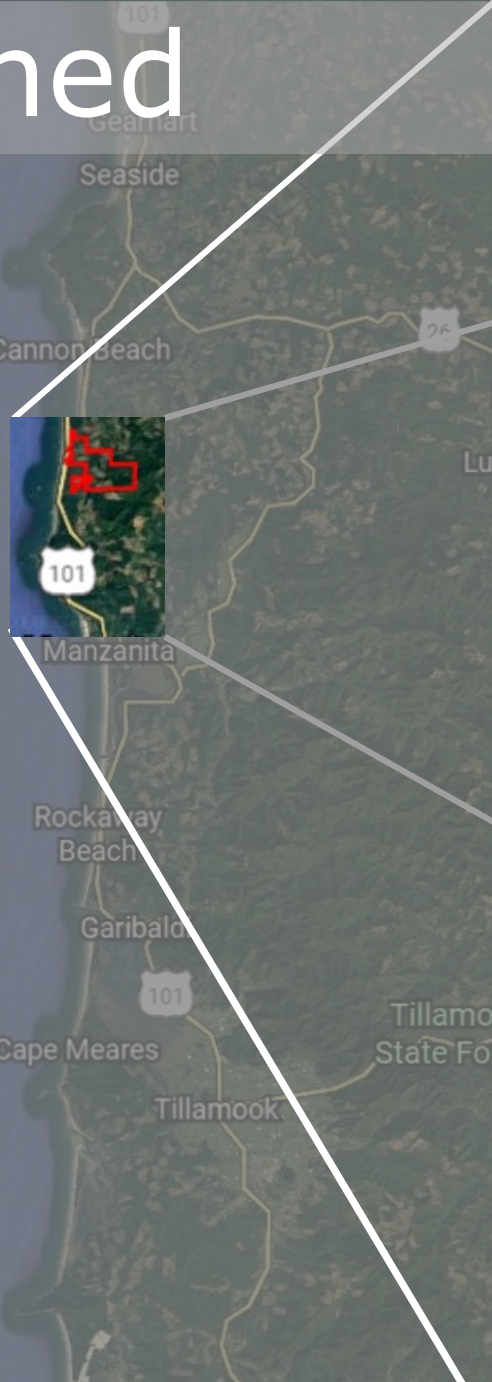
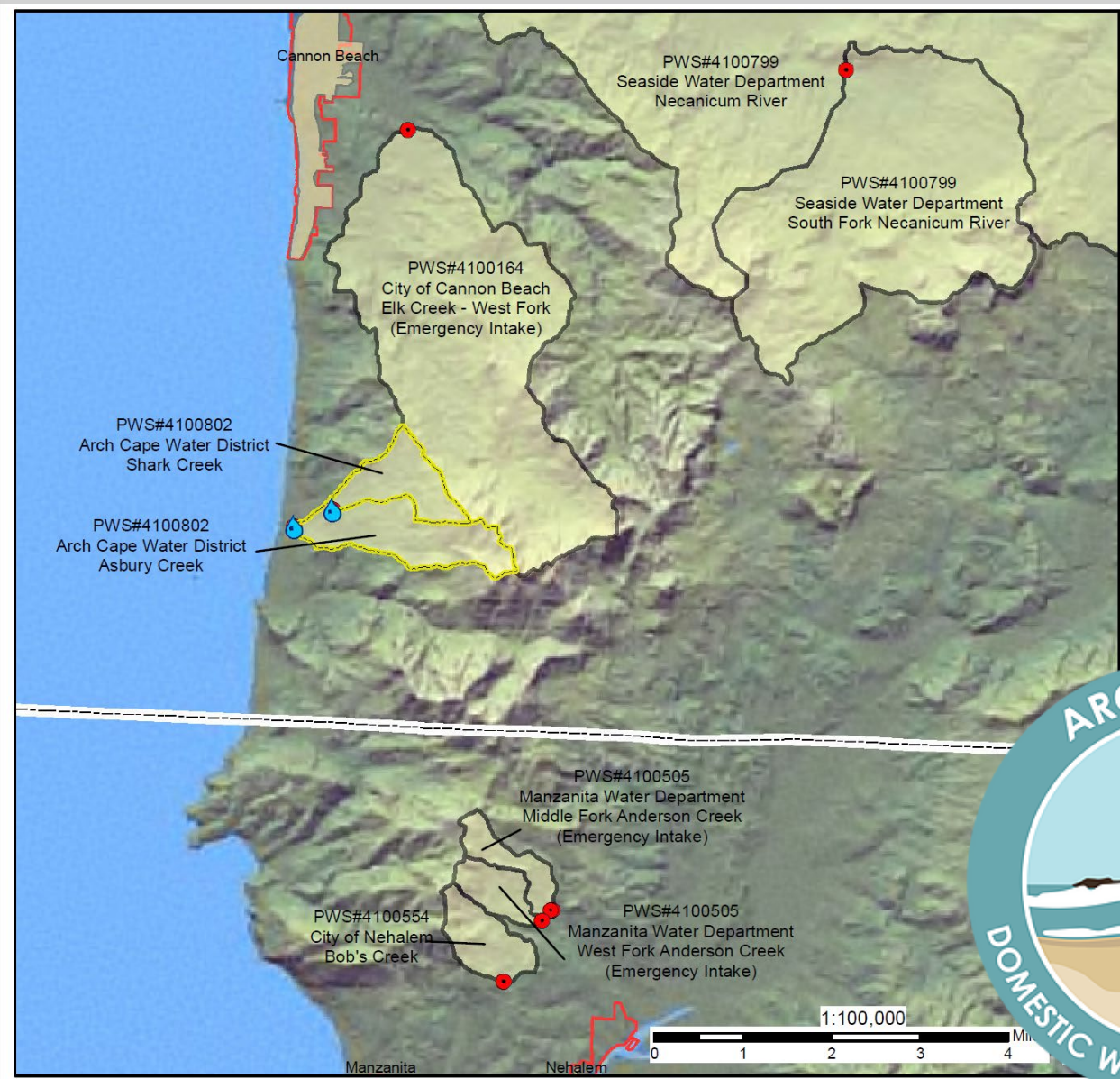


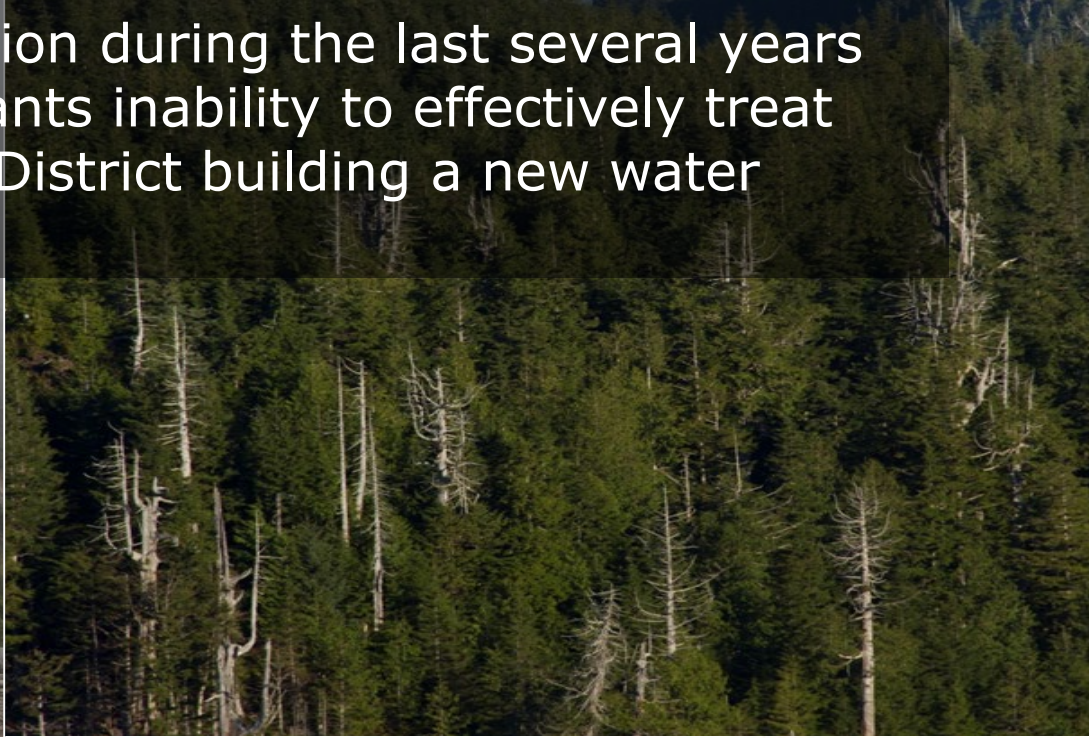
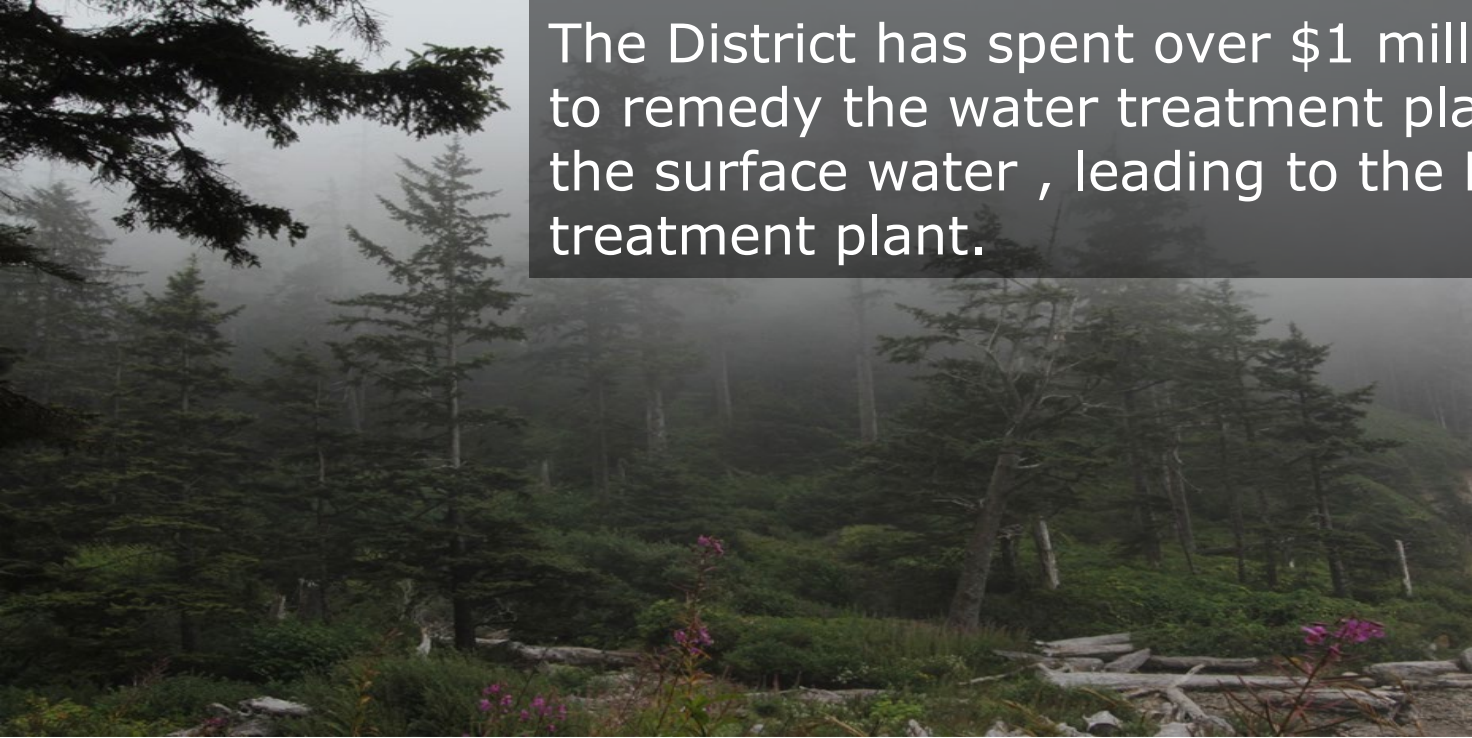
Figure 1. Arch Cape Water District (PWS 00802) Drinking Water Source Area and Adjacent Source Areas



Legend

- Arch Cape Water District surface water intake
- Arch Cape Water District Drinking Water Source Area
- Surface Water Intake
- Surface Water DWSAs
- Highways
 - Interstate
 - U.S. Routes
 - Oregon Routes
- Urban Growth Boundary (2010)
- County Boundary

The District has spent over \$1 million during the last several years to remedy the water treatment plants inability to effectively treat the surface water , leading to the District building a new water treatment plant.

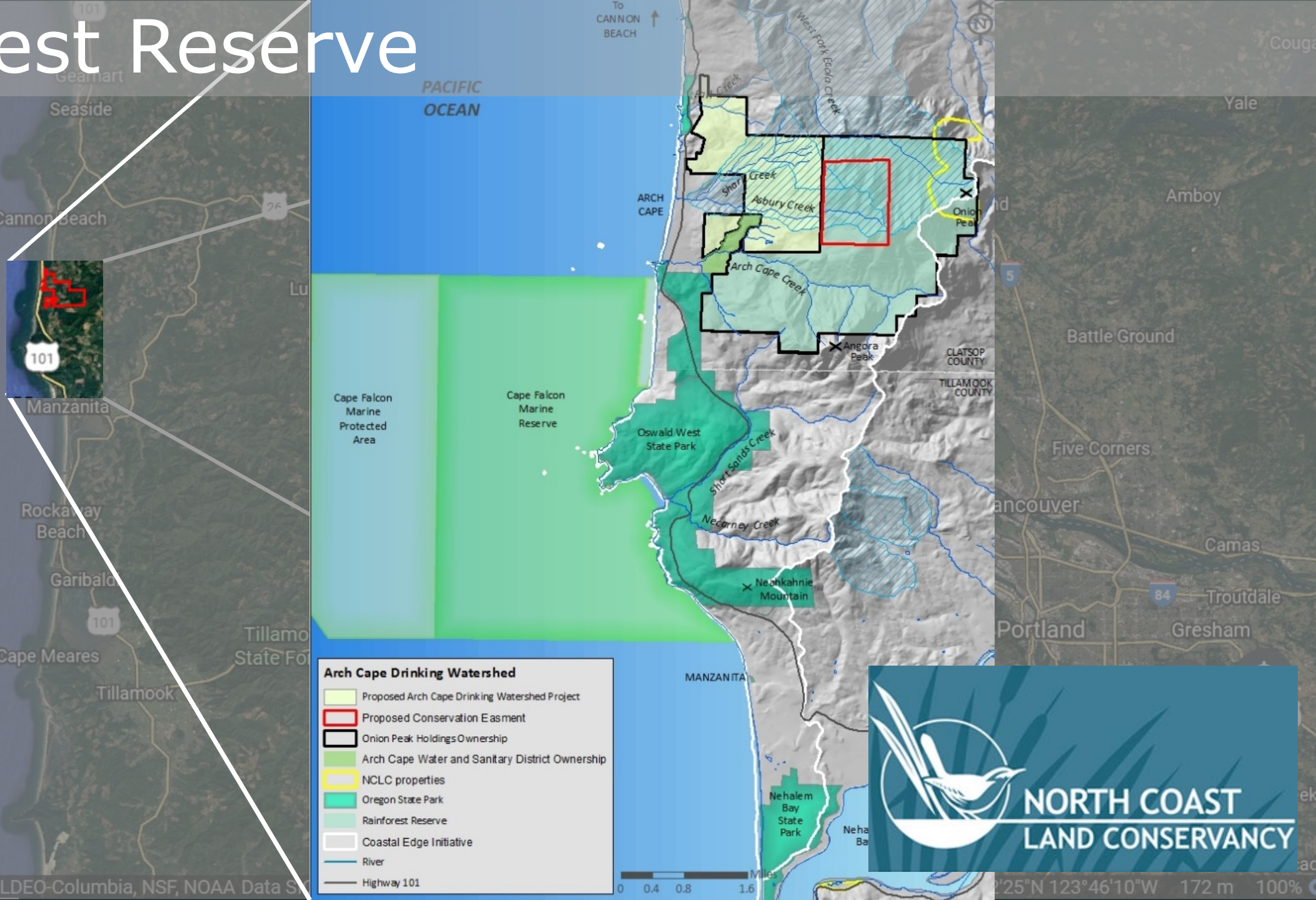


Community Forest Objectives

- Drinking water protection
- Forest management
- Revenue from timber harvest
- Restoration activities such as planting along streams for future large wood recruitment (salmon habitat)
- Recreation



Rainforest Reserve



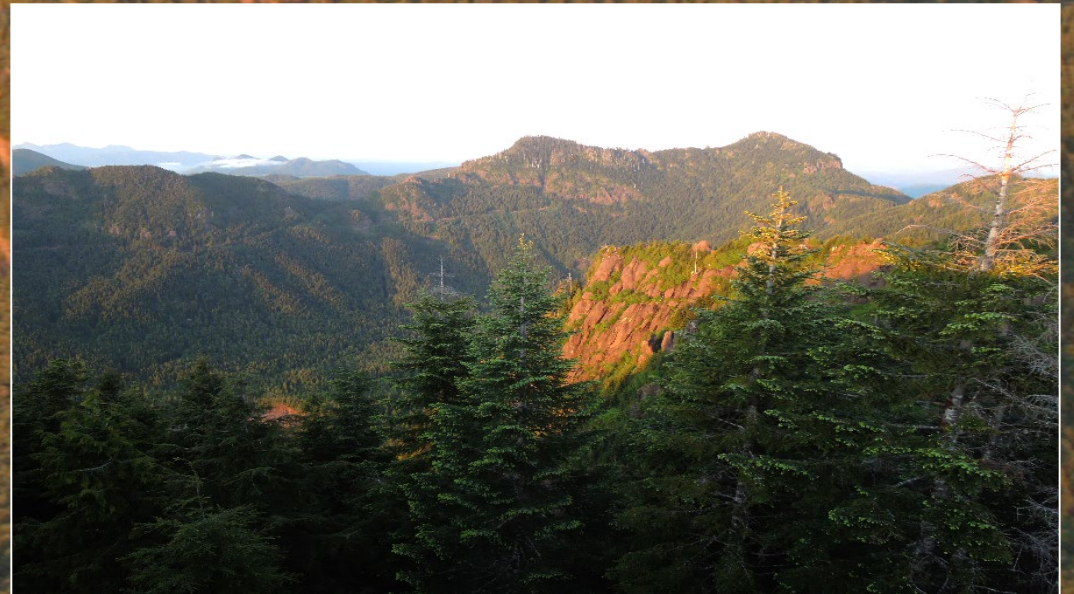
Arch Cape Drinking Watershed

- Proposed Arch Cape Drinking Watershed Project
- Proposed Conservation Easment
- Onion Peak Holdings Ownership
- Arch Cape Water and Sanitary District Ownership
- NCLC properties
- Oregon State Park
- Rainforest Reserve
- Coastal Edge Initiative
- River
- Highway 101



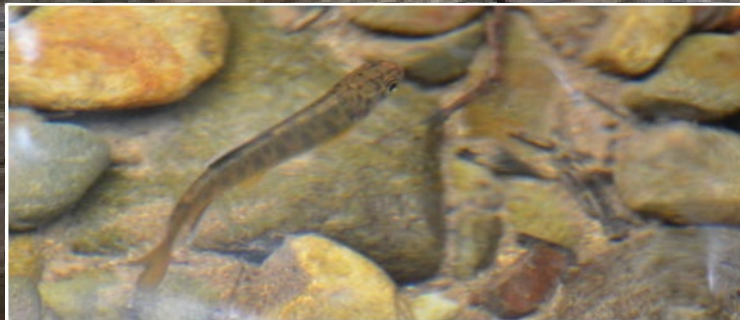
Unique Geology

Millions of years of flood lavas, combined with tectonic uplift, created an inverted river channel topography of marine sediments mixed with basalt, forming towering mountains of glassy fragmented rubble



Globally Rare Land and Sea Ecology

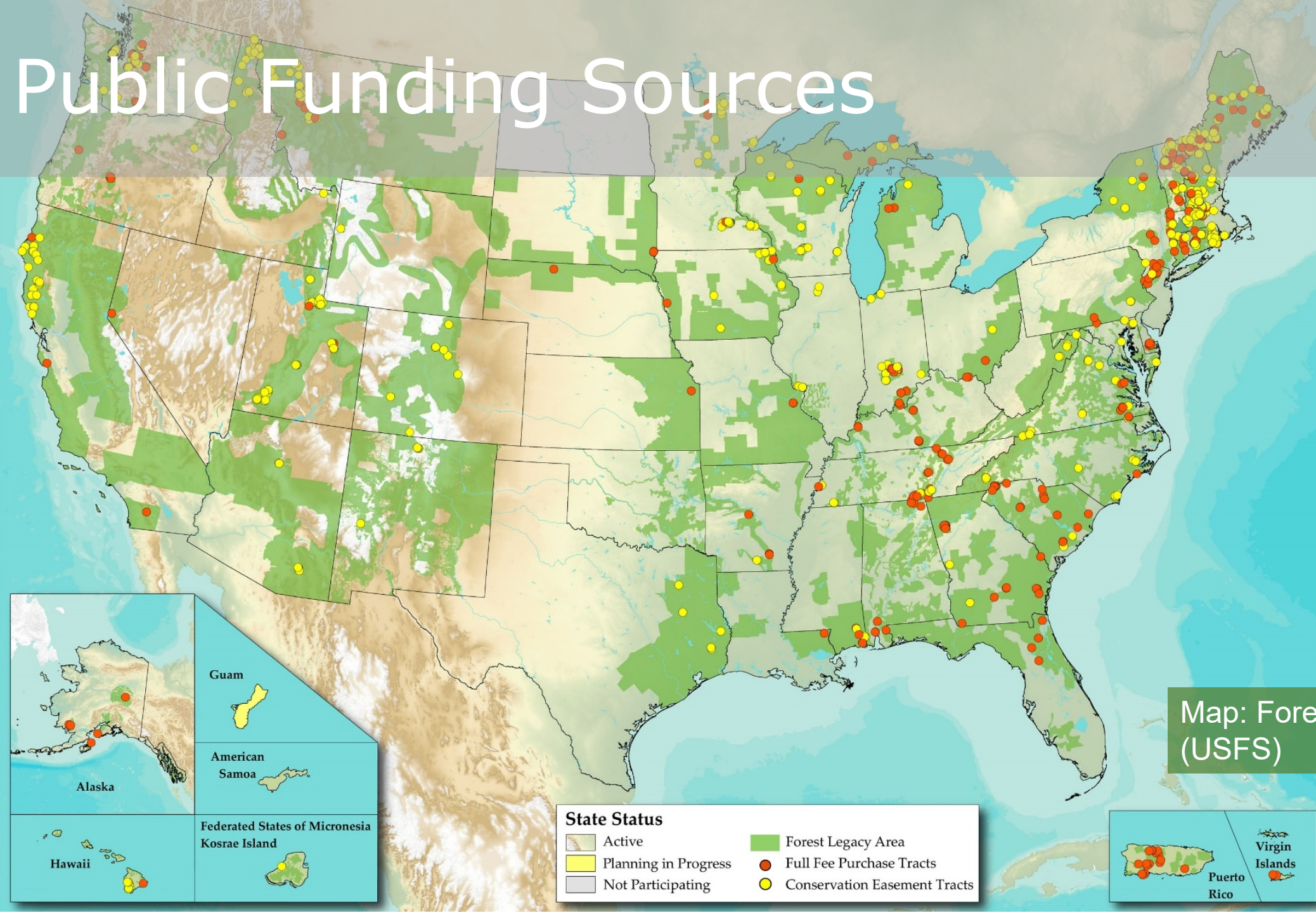
- Direct Ocean Tributaries
- Salmon and Trout
- Petal Tail Dragon Flies
- Endemic Plants
i.e. Chambers Paint Brush



Opportunity to balance economic & ecological goals



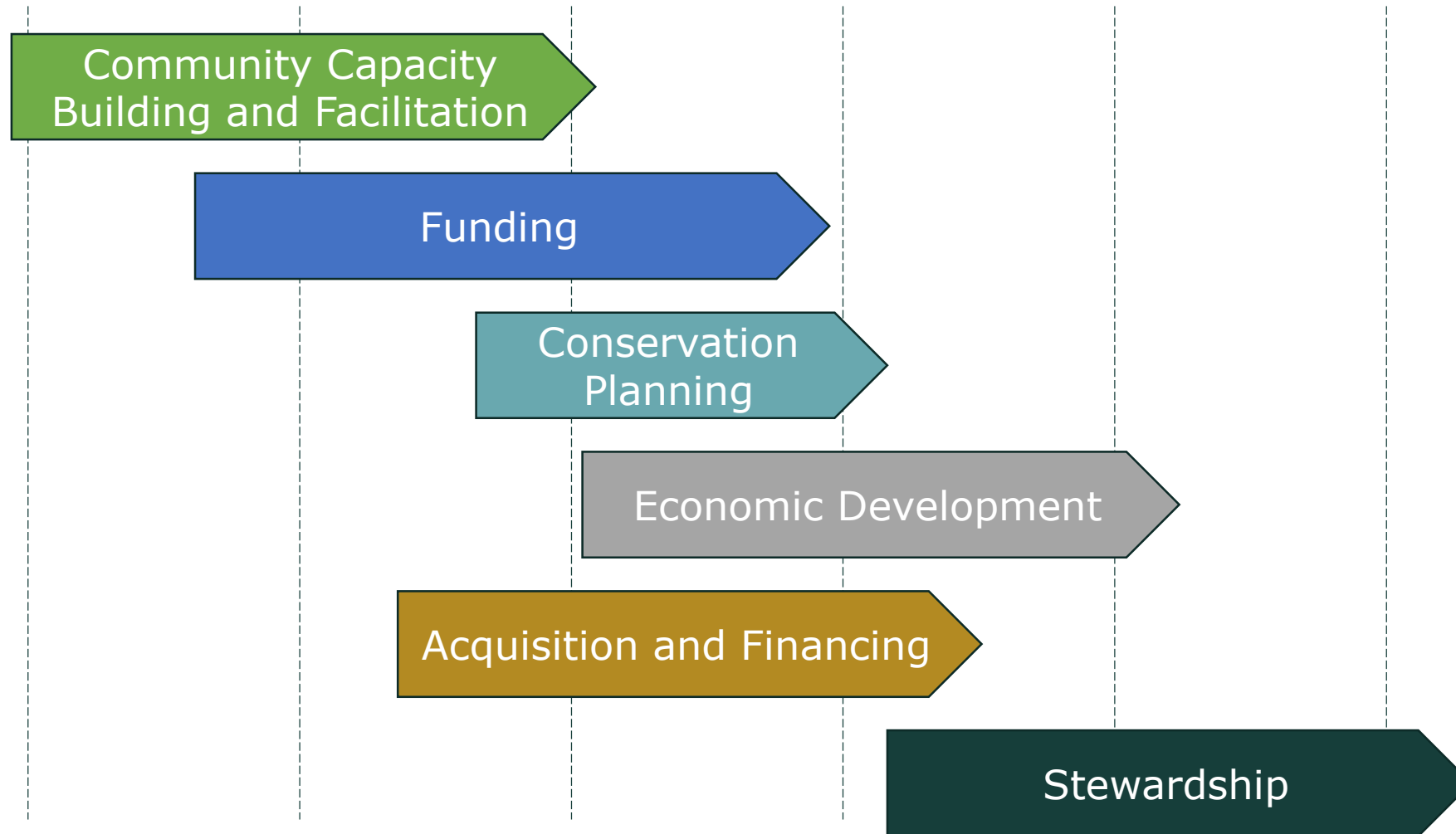
Public Funding Sources



Map: Forest Legacy Projects (USFS)



Roadmap



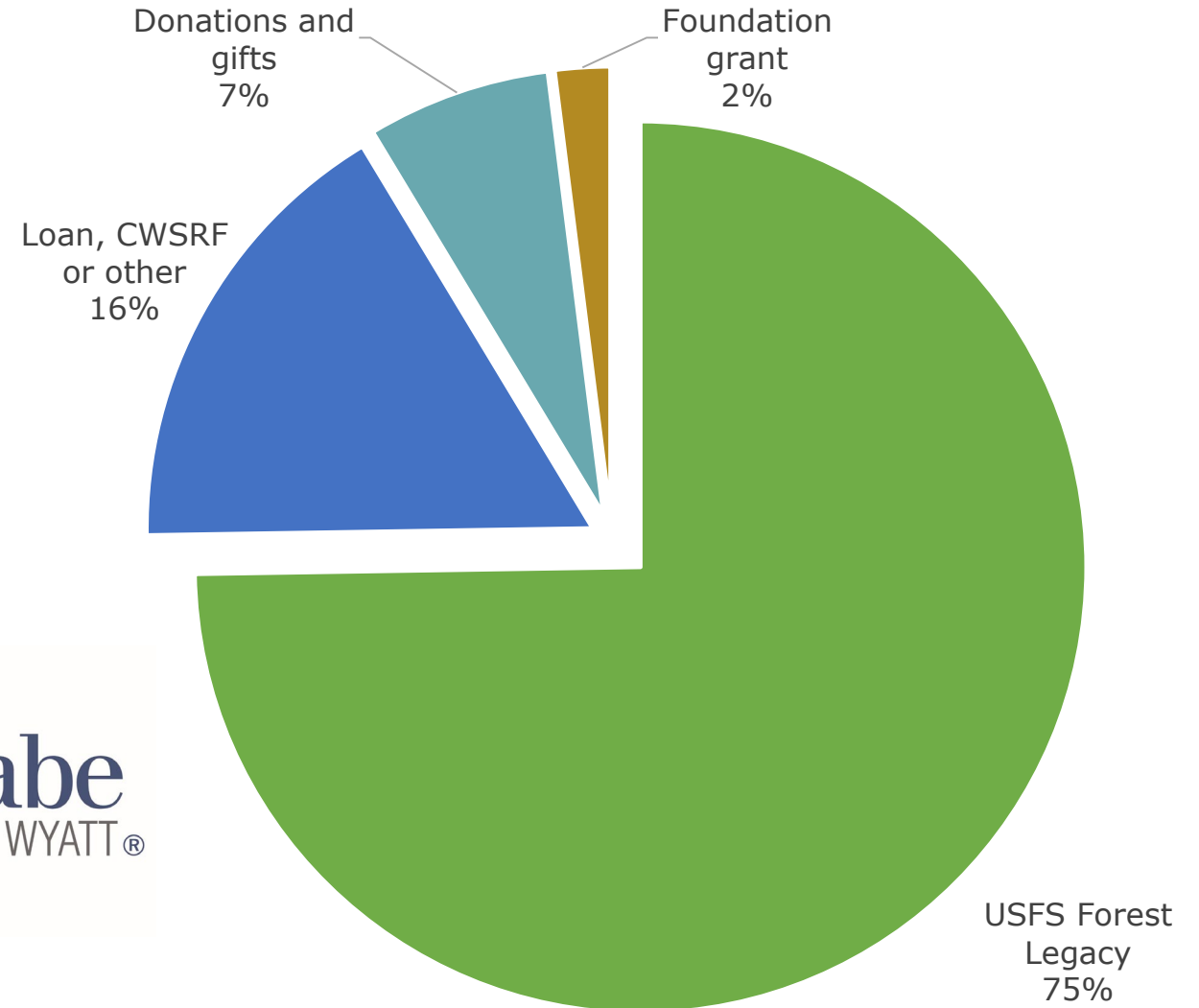
Funding Strategy

Project Development

- Multiple grants and in-kind assistance to support technical assistance and community engagement

Acquisition

- Forest Legacy Grant \$5,625,000
- Pursuing other grants and loans to supplement the purchase price of \$7,000,000



Healthy Forests, Healthy Water

Thank you

