

CPO 15 Meeting Agencies' Presentation

Virtual Meeting | April 14, 2021

Oregon Department of Environmental Quality

Jeremy Fleming, Solid Waste Inspector
Audrey O'Brien, Solid Waste Manager



State of Oregon
Department of Environmental Quality

Enforcement Update

- Columbia NW Recycling (dba Construction Material Recovery)
 - In process of submitting required documents
- Westside Rock
 - Submittals complete and approved
 - Next step: settlement discussion

Solid Waste

- Historic – Previous quarry owner was issued a warning letter in 2010. Artificial turf was transported to Hillsboro Landfill for disposal.
- Vactor Trucks – Documentation from CNR describes all loads received between February 2020 and May 2020 as soil and water (hydro excavation of utility trenches). Sampling of soil/water was performed in May 2020.

Glass Waste

- A Clean Fill Evaluation was performed by CNR and reviewed by DEQ.
- Heavy metal and plastic breakdown products are the contaminants of concern.
- Sampling results show no contamination present in the glass waste at or above Clean Fill levels.

Asphalt Shingle Waste

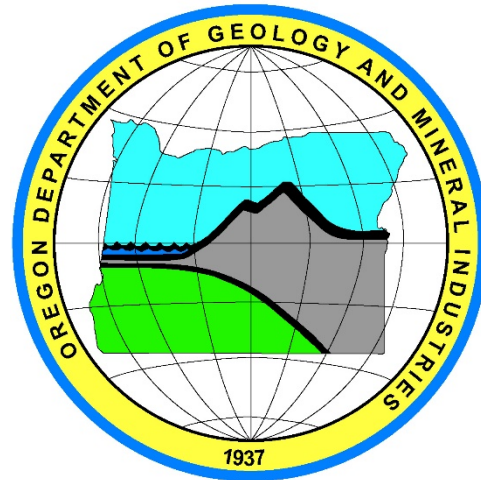
- CNR has submitted an Asphalt Shingle Waste disposal plan. DEQ has reviewed and is working with CNR to make revisions to the plan.
- CNR proposes to remove all shingle waste, including the shingle waste that is being used as an equipment parking lot.

Groundwater Sampling

- Two seeps (groundwater discharge at the surface) located below the stormwater impoundment were sampled. No indications of impacts from disposal activities were indicated.
- Groundwater from the onsite water supply well (WASH 76970) was also sampled. No indications of impacts from disposal activities were indicated.

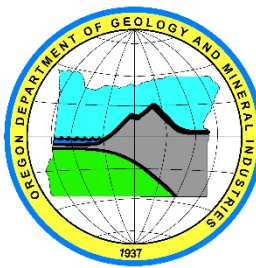
Oregon Department of Geology and Mineral Industries

Lisa Reinhart, Water Quality Reclamationist
Cari Buchner, Mining Compliance Specialist



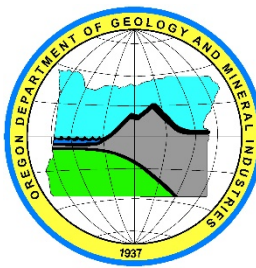
DOGAMI Operating Permit

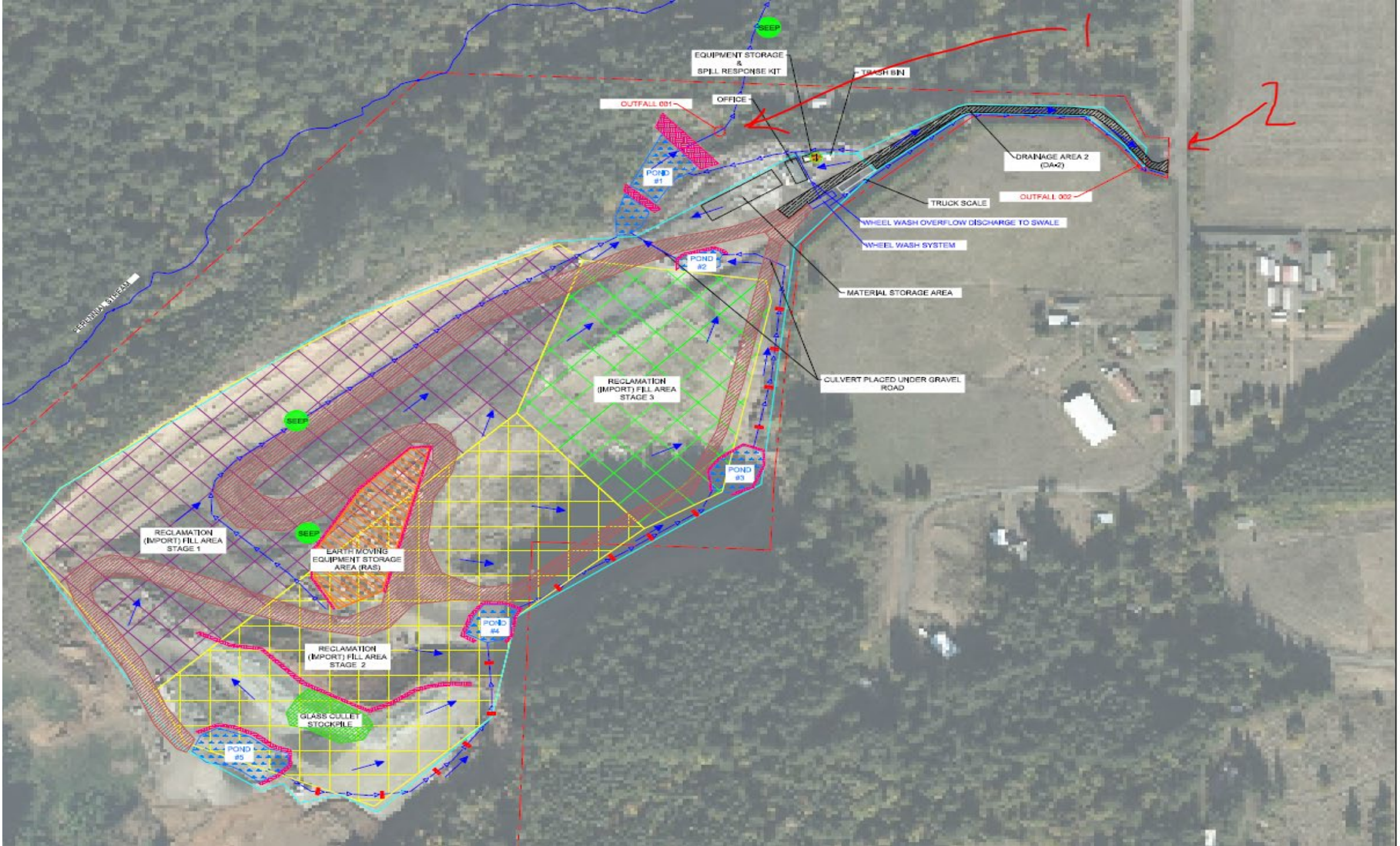
- **Suspension Order (SO) Issued 10/28/20**
 - **Reclamation Fill and Drainage Plan Approved 2/8/2021**
 - **DOGAMI would not lift SO until SWPCP was approved**
 - **SWPCP approved 3/22/21**
- **Suspension Order Lifted 4/1/21**
 - **Reclamation operations may resume-including receiving clean fill materials**



Stormwater Pollution Control Plan

- Required to meet 1200-A Permit Requirements
 - Design a plan that includes adequate control measures to prevent discharge of sediment and other pollutants.
 - Route all stormwater to two authorized discharge locations.
 - Sample discharged stormwater from both outfalls 4 times per year and submit results to DOGAMI for review.
 - Total Settable Solids, Suspended Solids, Oil & Grease, pH
 - If samples exceed allowable limits, go back and redesign plan





EQUIPMENT STORAGE & SPILL RESPONSE KIT

TRASH BIN

OUTFALL 001

OFFICE

POND #1

DRAINAGE AREA 2 (DA#2)

TRUCK SCALE

OUTFALL 002

WHEEL WASH OVERFLOW DISCHARGE TO SWALE

WHEEL WASH SYSTEM

MATERIAL STORAGE AREA

CULVERT PLACED UNDER GRAVEL ROAD

RECLAMATION (IMPORT) FILL AREA STAGE 3

POND #2

POND #3

RECLAMATION (IMPORT) FILL AREA STAGE 1

EARTH MOVING EQUIPMENT STORAGE AREA (EAS)

RECLAMATION (IMPORT) FILL AREA STAGE 2

POND #4

GLASS CULLET STOCKPILE

POND #5

SEEP

SEEP

SERVICED W/STORAGE



Thank you!