



Cumulative Health Risk Pilot

Phase 1: Listening Session
Cleaner Air Oregon

Morgan B. Schafer, Oregon Department of Environmental Quality

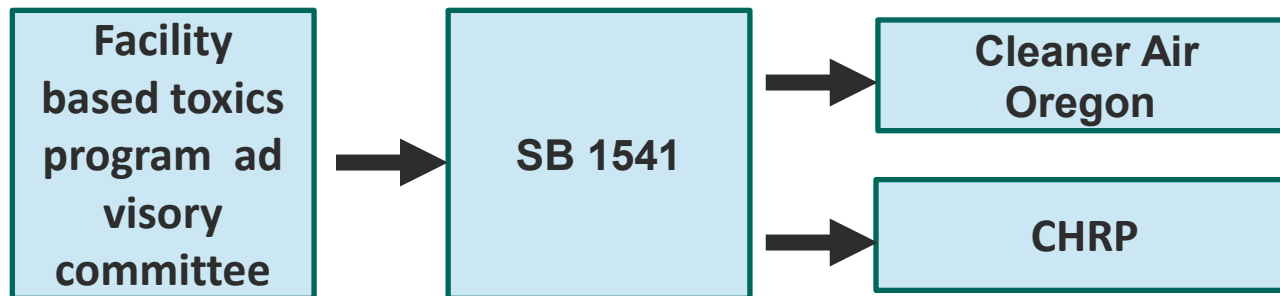
Listening Session Agenda

- Welcome and Introductions (10 min)
- Background Information (10 min)
- Pilot Study Area (15 min)
- Community Feedback (up to 45 min)
- Next Steps (5 min)

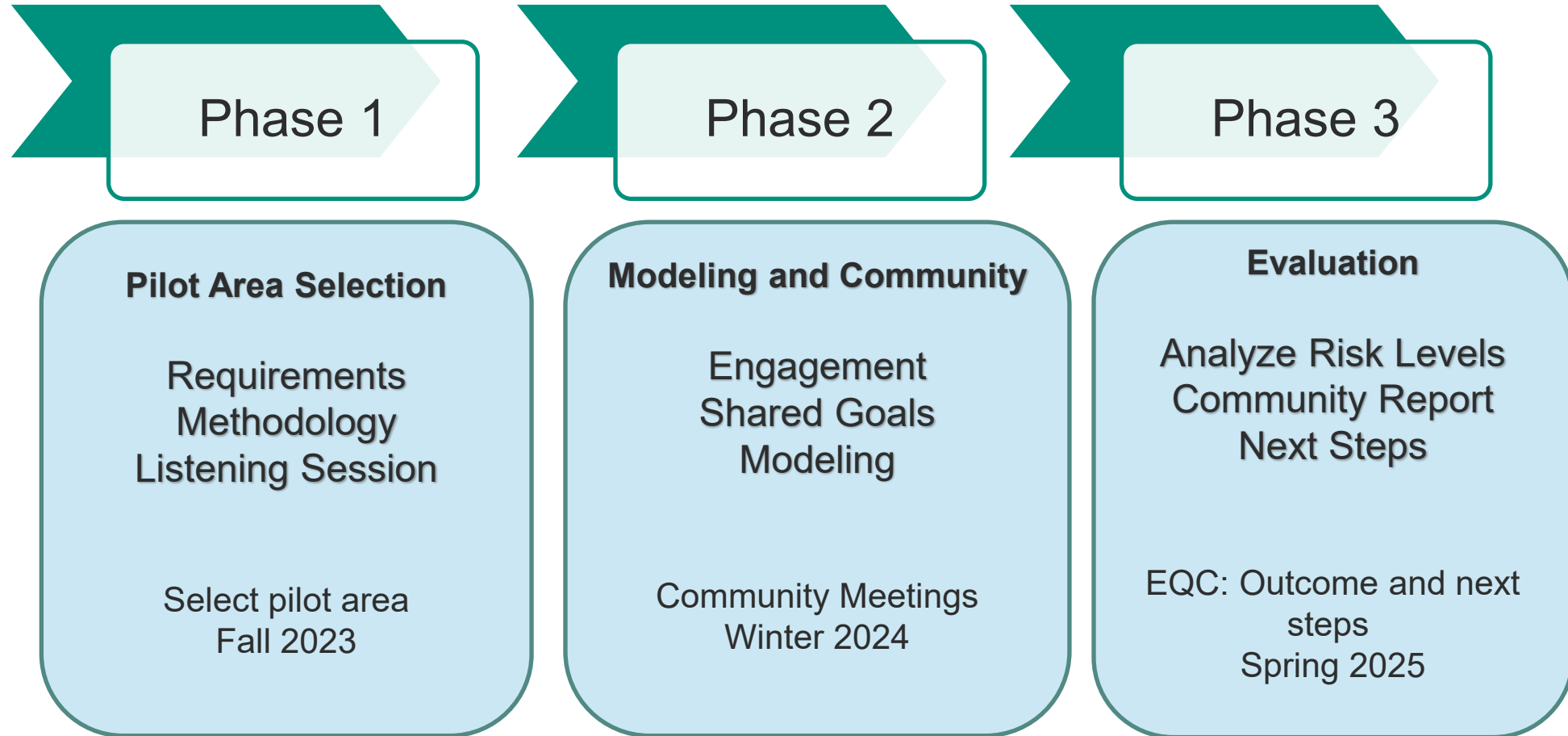
Cumulative Health Risk Pilot: Overview

In 2018 the Oregon legislature, in **Senate Bill 1541**, authorized DEQ to develop a pilot project to evaluate and address the cumulative impacts of air pollution, focused on stationary sources, in a community. The law includes direction on the size of area to evaluate, and allowable levels of pollution from commercial and industrial activities.

The Community Health Risk Pilot project is an opportunity to work with a community and learn how air pollution from many sources, all together, may affect their health.



Project Phases



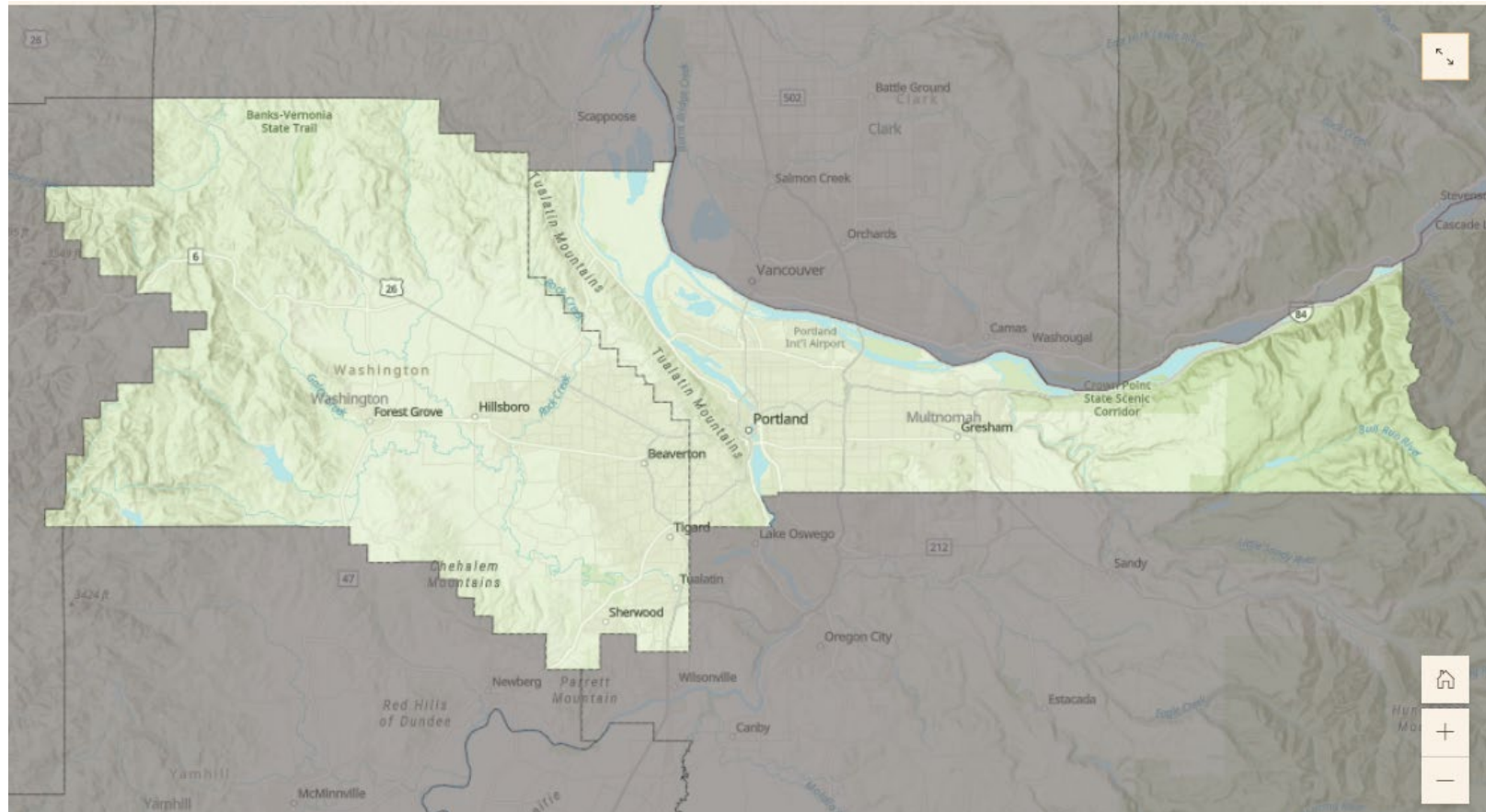
Phase 1: Area Screening Requirements

- ORS 468A.339 gives specific area requirements
 - Applies to one area no larger than 2.5-mile diameter
 - County Population 500k or higher
 - Cancer risk above statewide average
 - Area contains multiple facilities

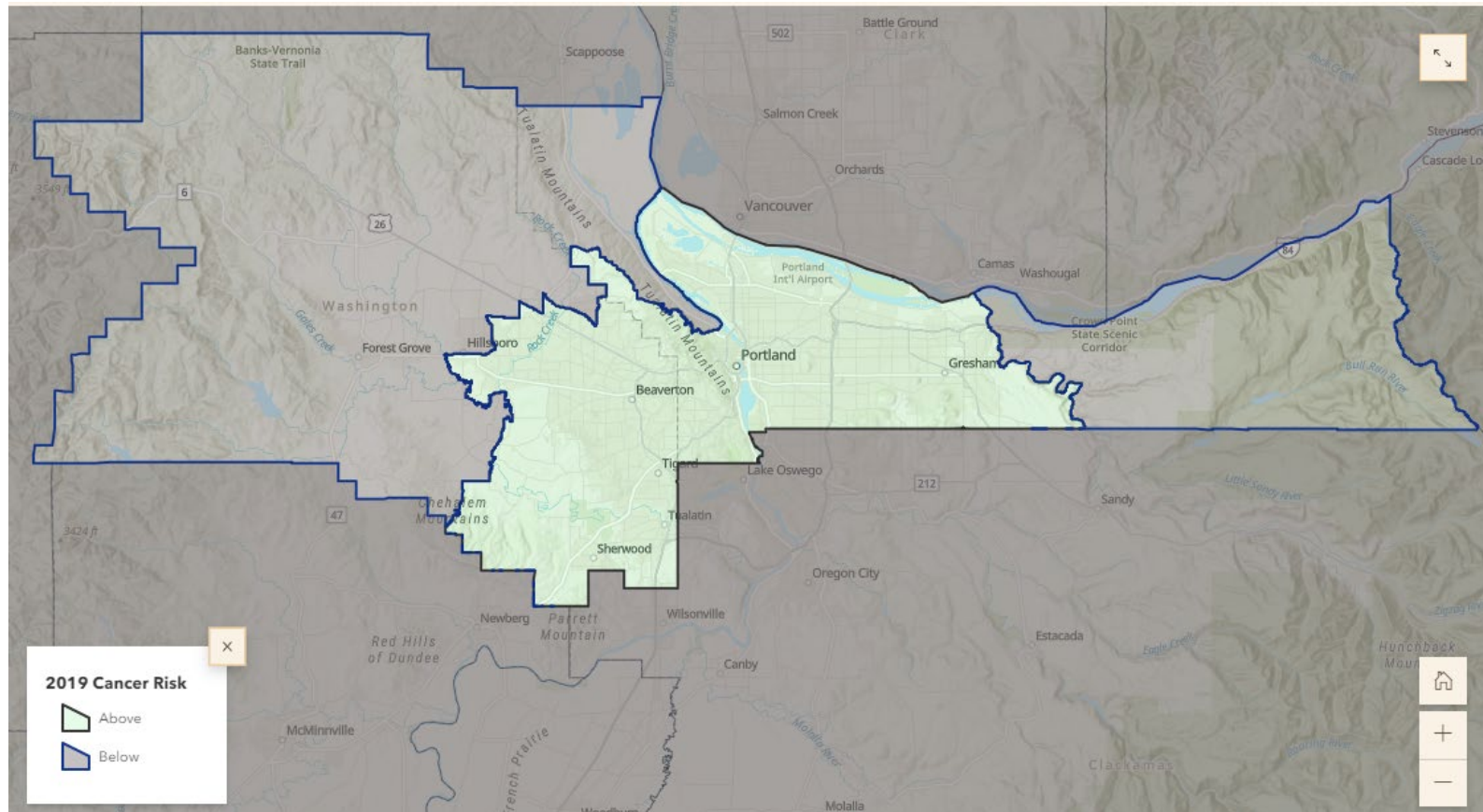
One area no larger than a 2.5-mile circle



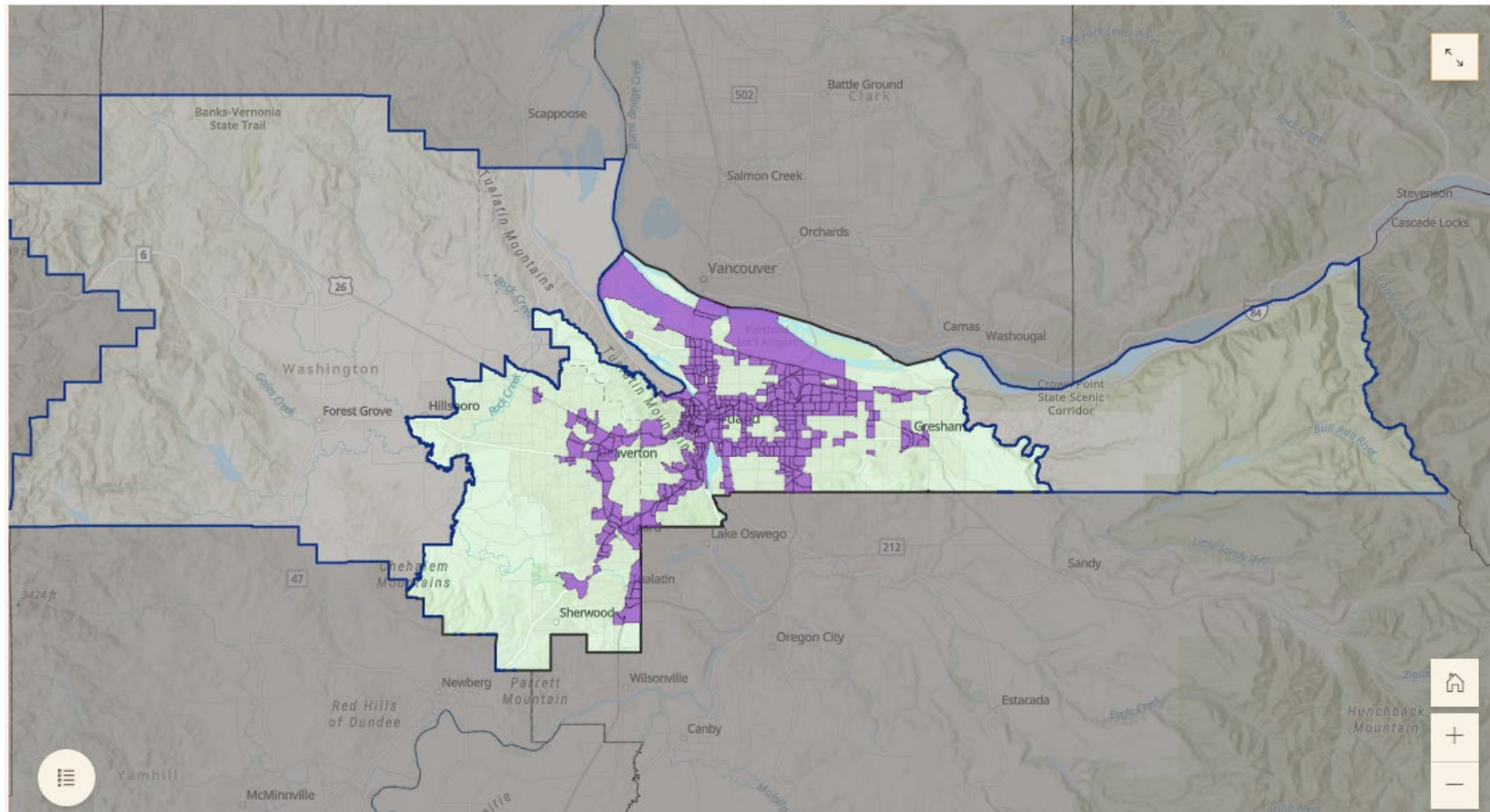
County Population Density 500k or higher



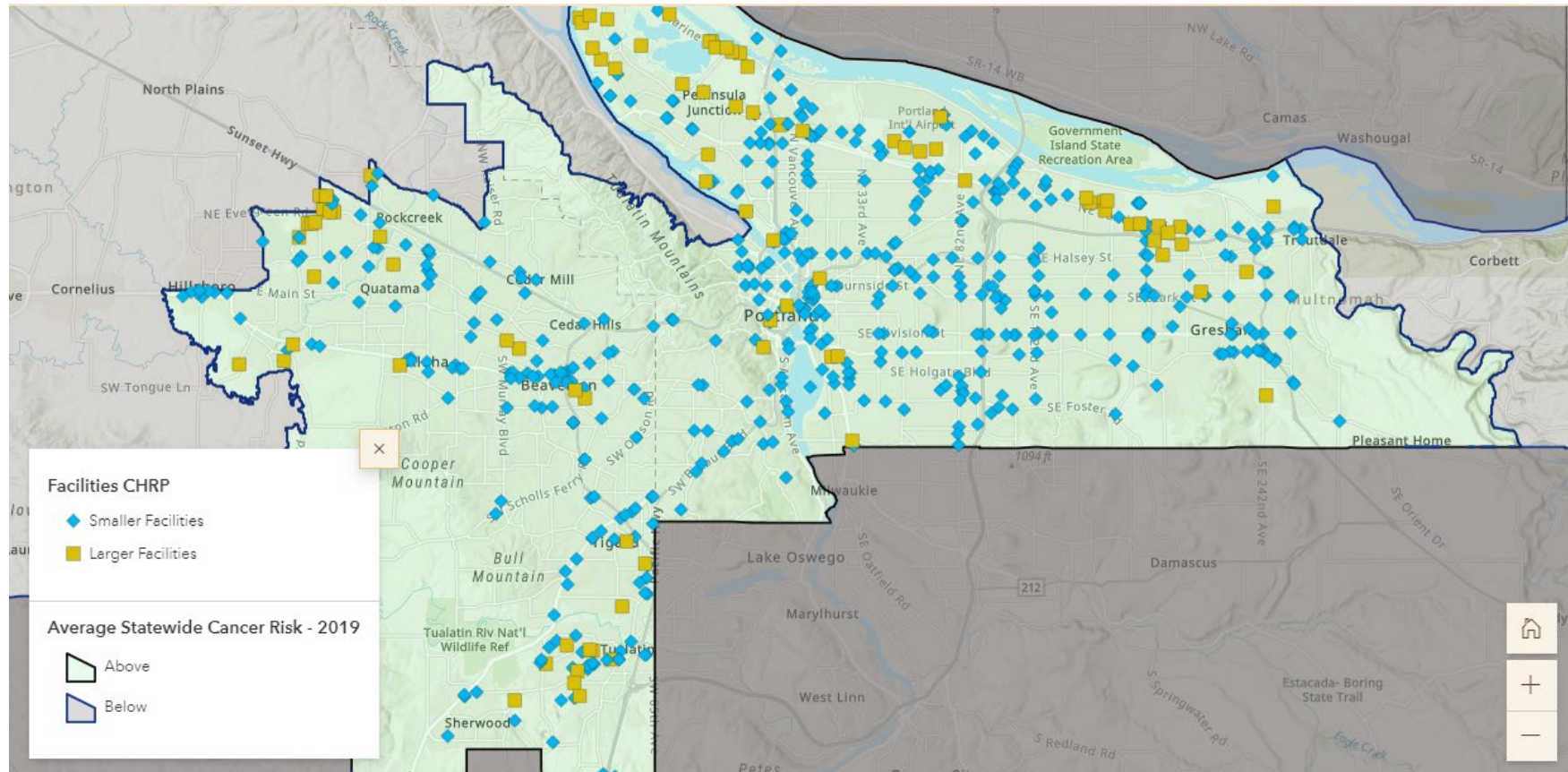
Cancer risk above statewide average



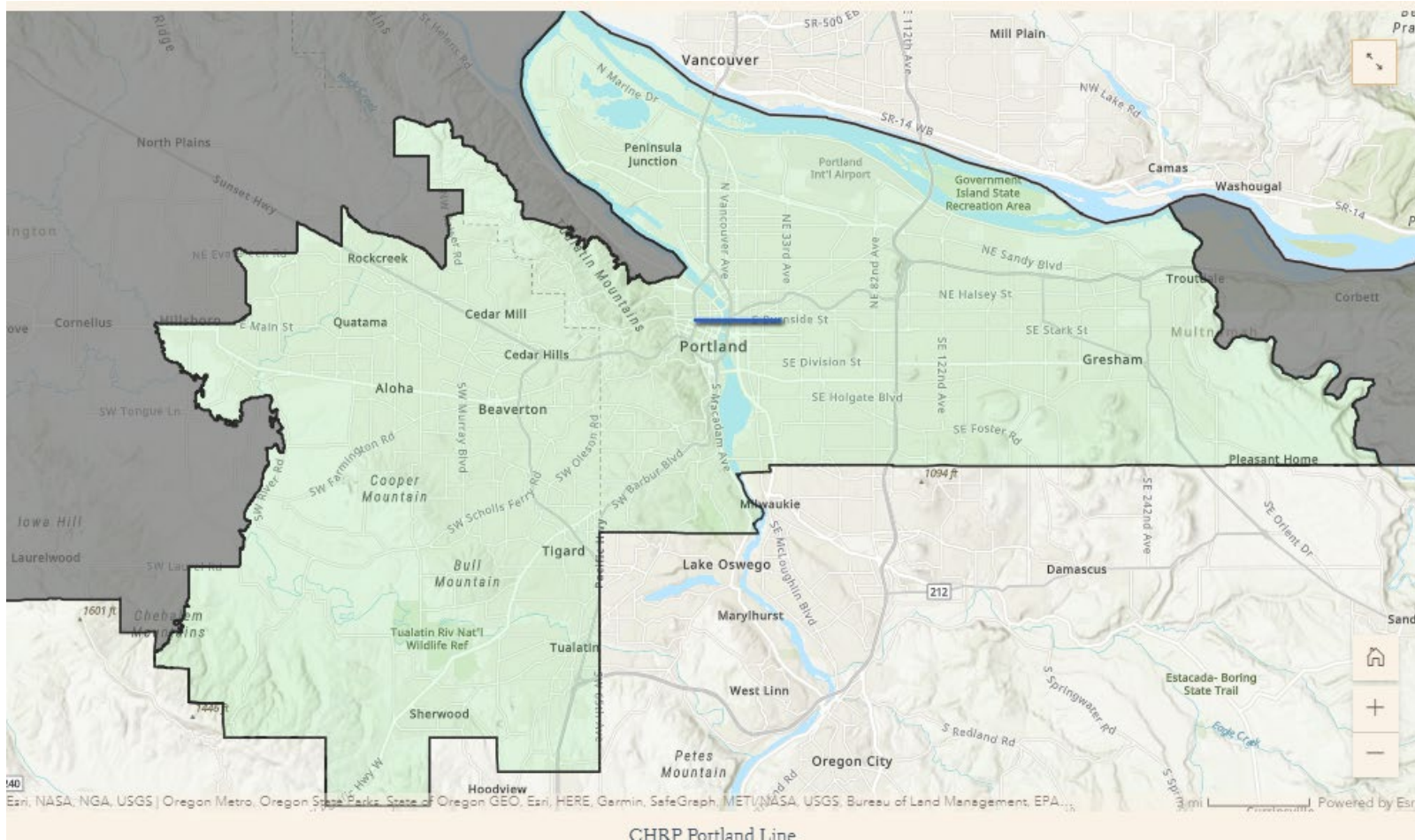
Cancer Risk From Diesel



Contain multiple stationary sources



One area no larger than a 2.5-mile circle



Community Feedback

- What additional information should be included when choosing the pilot area?
- Should some requirements or information be emphasized more than others?
- Is there information you feel shouldn't be included?

Additional Information for Area Selection

Population Indicators

Examples Include:

- Limited English Speaking
- Income
- Asthma rates
- Cardiovascular Disease

Environmental Indicators

Examples Include:

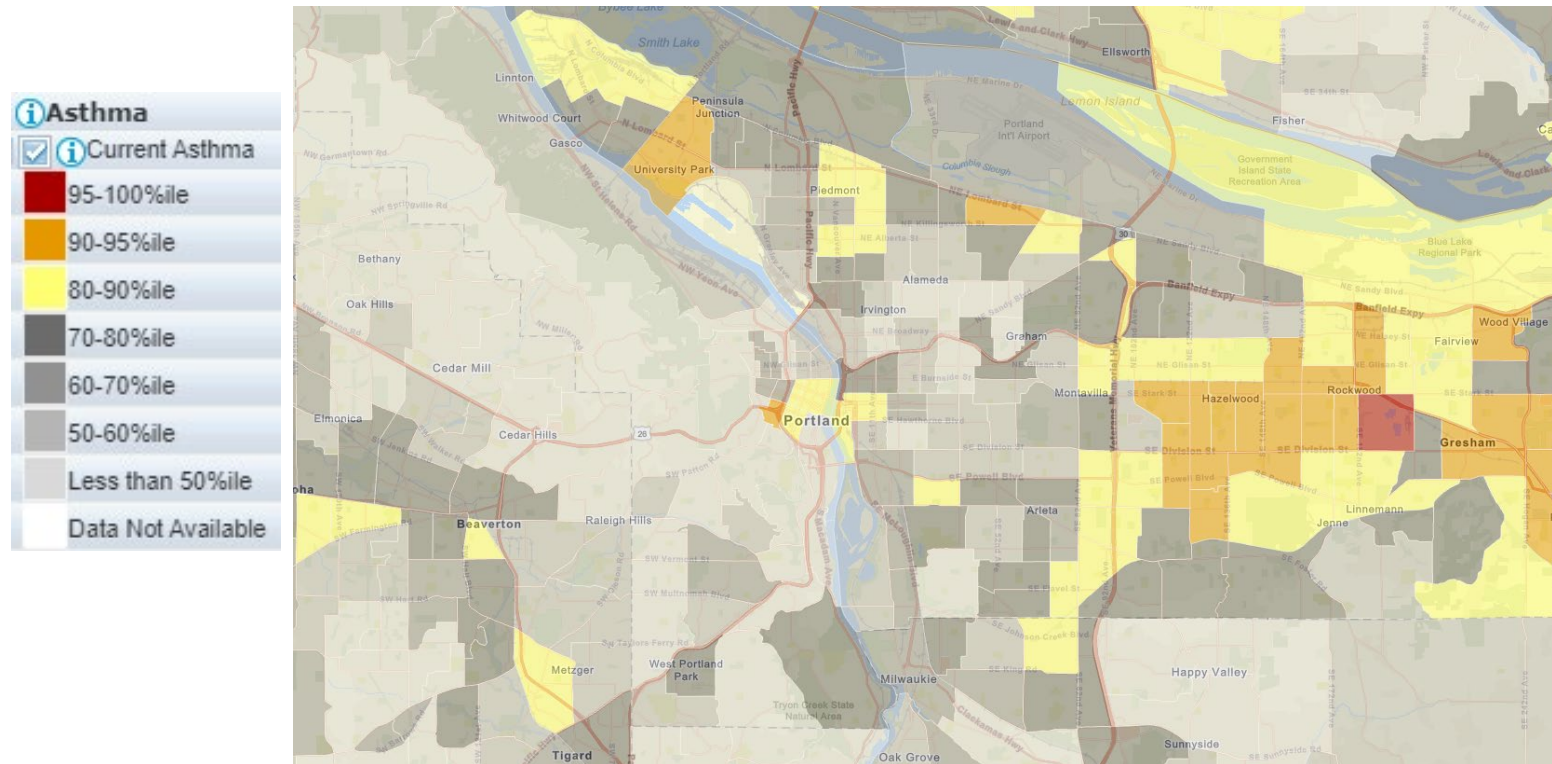
- Particulate Matter
- Ozone

Geographical Indicators

Examples Include:

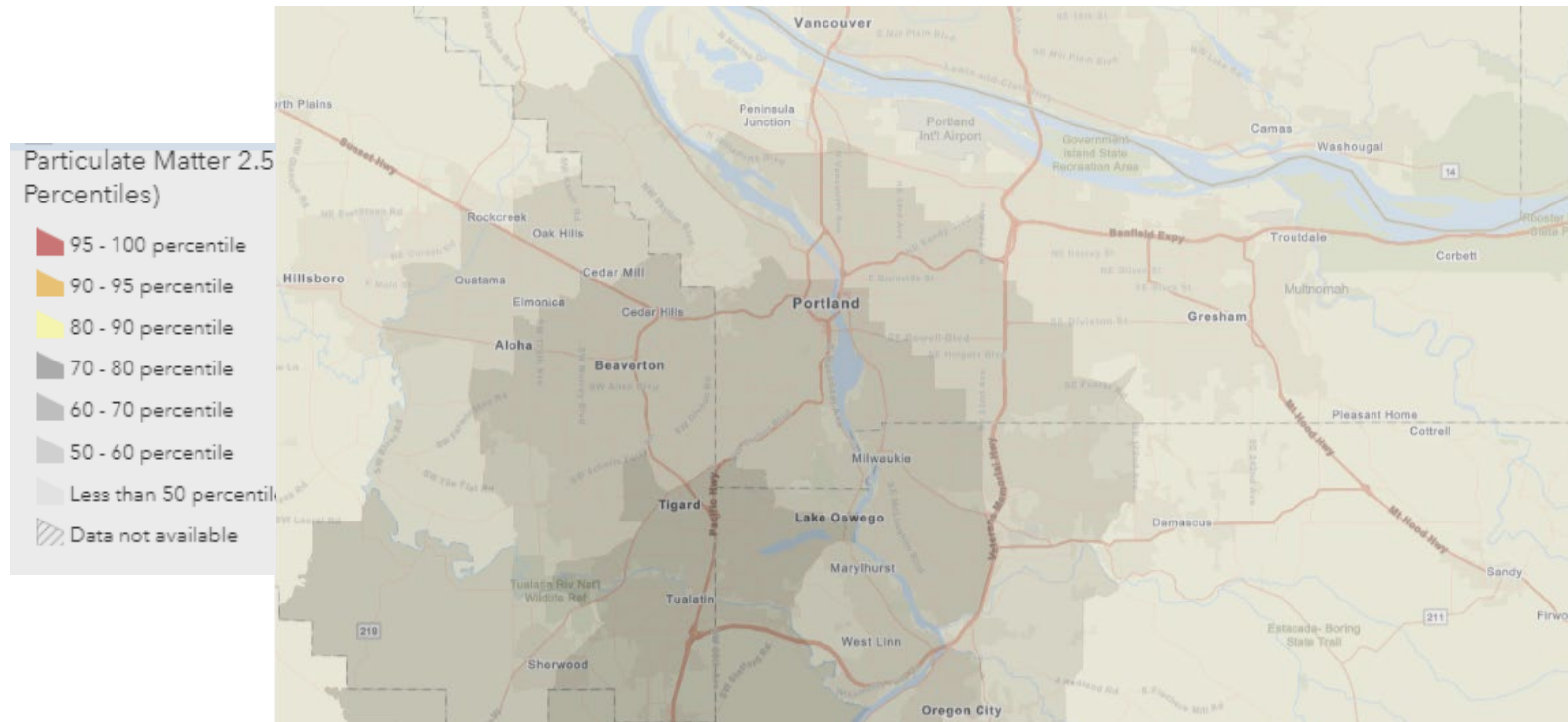
- School location
- Outdoor Recreation

Population



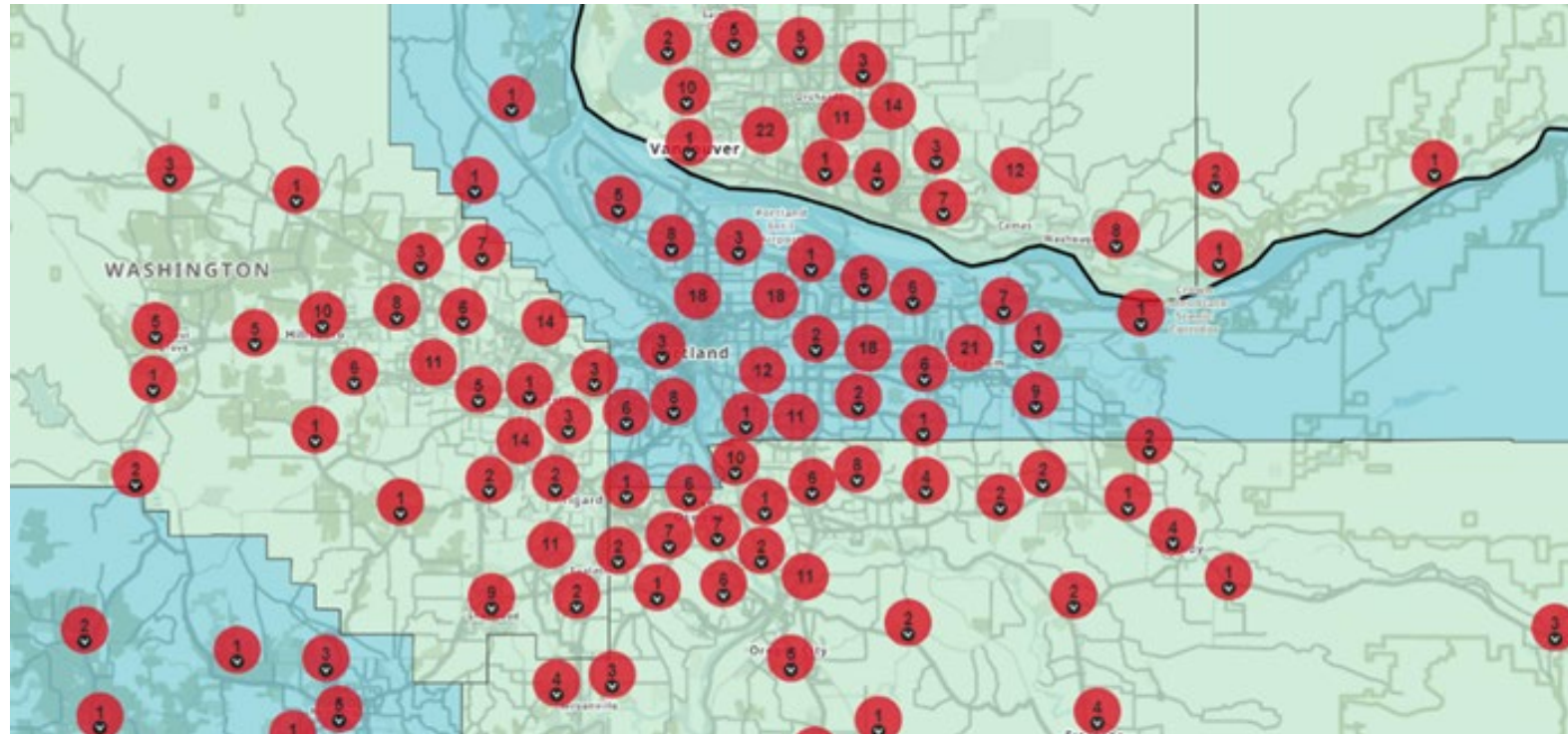
This is an image taken from EJ Screen depicting asthma rates in the Portland area. A higher percentile means that area has more individuals with asthma when compared to other areas.

Environmental



This is an image taken from EJ Screen showing levels of PM2.5 in the Portland area. A higher percentile means that area has more exposure to PM2.5 when compared to other areas.

Geographic



This is an image taken from Center for Disease Control's Social Vulnerability Index showing locations of public schools in the Portland area.

Community Feedback

- What **additional information** should be included when choosing the pilot area?
- Should some requirements or information be **emphasized** more than others?
- Is there information you feel **shouldn't be included**?

Next Steps

- Review feedback to include for determining pilot location
- Choose a location
- Inform the community members, facilities, and other interested parties and the Environmental Quality Commission

Thank you for your feedback and time. If you have additional comments to share, please email

Morgan Schafer

Morgan.Schafer@deq.oregon.gov

Title VI and alternative formats

DEQ does not discriminate on the basis of race, color, national origin, disability, age or sex in administration of its programs or activities.

Visit DEQ's [Civil Rights and Environmental Justice page](#).

[Español](#) | [한국어](#) | [繁體中文](#) | [Русский](#) | [Tiếng Việt](#) | [العربية](#)
Contact: 800-452-4011 | TTY: 711 | deqinfo@deq.state.or.us