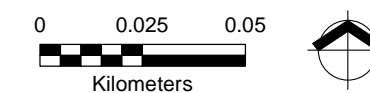


Figure 4-2
Proposed Emission
Source Locations
ENTEK International, LLC
Lebanon, Oregon 97355

Legend

- + UTM Grid Guideline
- Proposed Point Source
- Exposure Assessment Boundary
- Proposed Volume Source
- Proposed Line Source



Sources: Aerial photograph obtained from Bing
via Esri ArcGIS Online.



This product is for informational purposes and may not have been prepared for, or be suitable
for legal, engineering, or surveying purposes. Users of this information should review or
consult the primary data and information sources to ascertain the usability of the information.

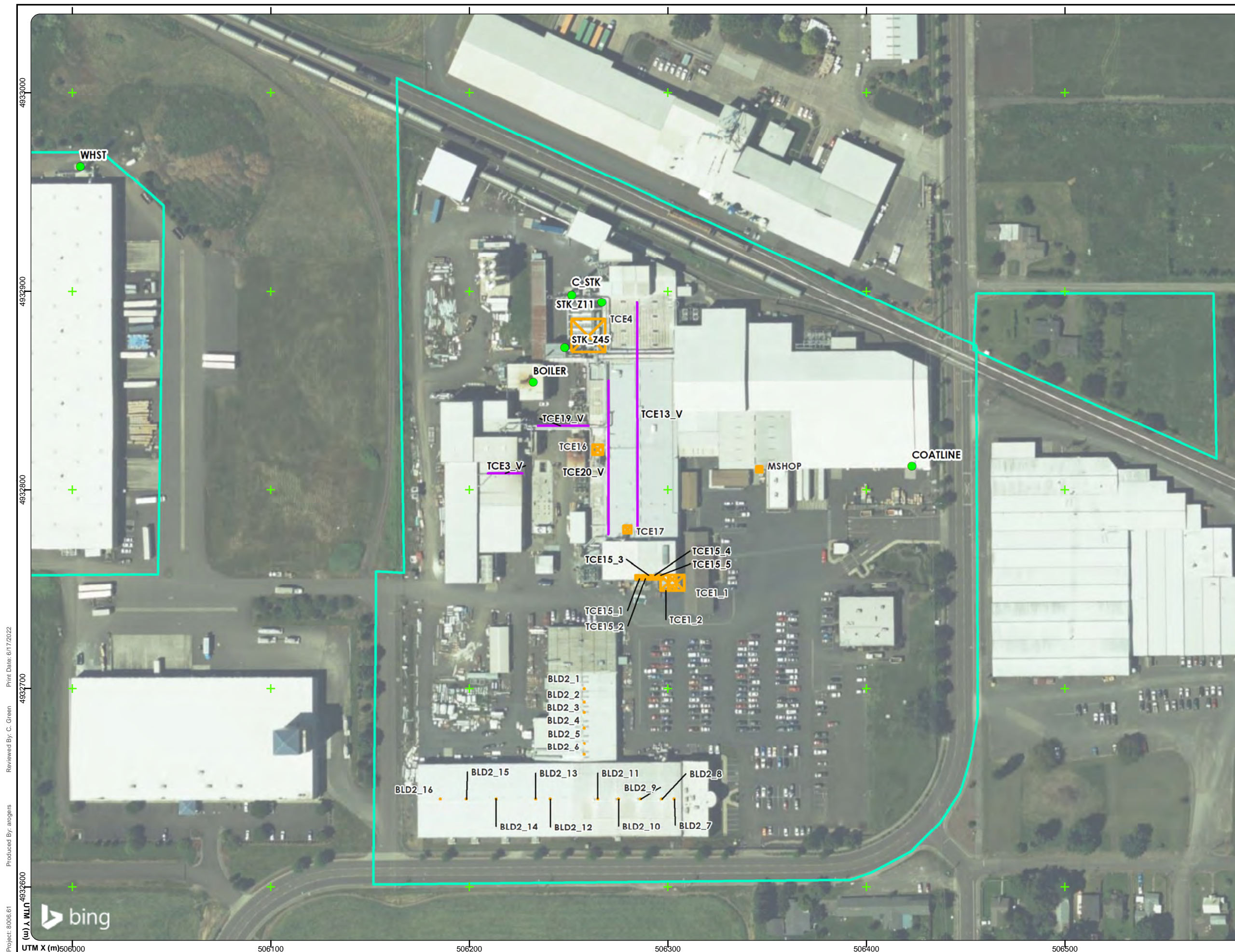
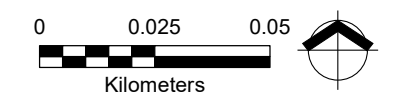


Figure 4-3
Proposed Downwash
Structure Locations
 ENTEK International, LLC
 Lebanon, Oregon 97355

Legend

- + UTM Grid Guideline
- Exposure Assessment Boundary
- Proposed Downwash Structure



Sources: Aerial photograph obtained from Bing via Esri ArcGIS Online.

 **MAUL FOSTER ALONGI**
 p. 971 544 2139 | www.maulfooster.com

This product is for informational purposes and may not have been prepared for, or be suitable for legal, engineering, or surveying purposes. Users of this information should review or consult the primary data and information sources to ascertain the usability of the information.



Project: 8006.61
 Produced By: arogers
 Reviewed By: C. Green
 Print Date: 6/22/2022
 UTM X (m)
 4932600
 4932700
 4932800
 4932900



Figure 4-5
Proposed Receptor Locations
in the Immediate Area
ENTEK International, LLC
Lebanon, Oregon 97355

- Legend
- + UTM Grid Guideline
 - Receptor in Right-of-Way - Risk Not Assessed
 - Proposed Receptor Location
 - Exposure Assessment Boundary



Sources: Aerial photograph obtained from Esri
ArcGIS Online.



This product is for informational purposes and may not have been prepared for, or be suitable for legal, engineering, or surveying purposes. Users of this information should review or consult the primary data and information sources to ascertain the usability of the information.

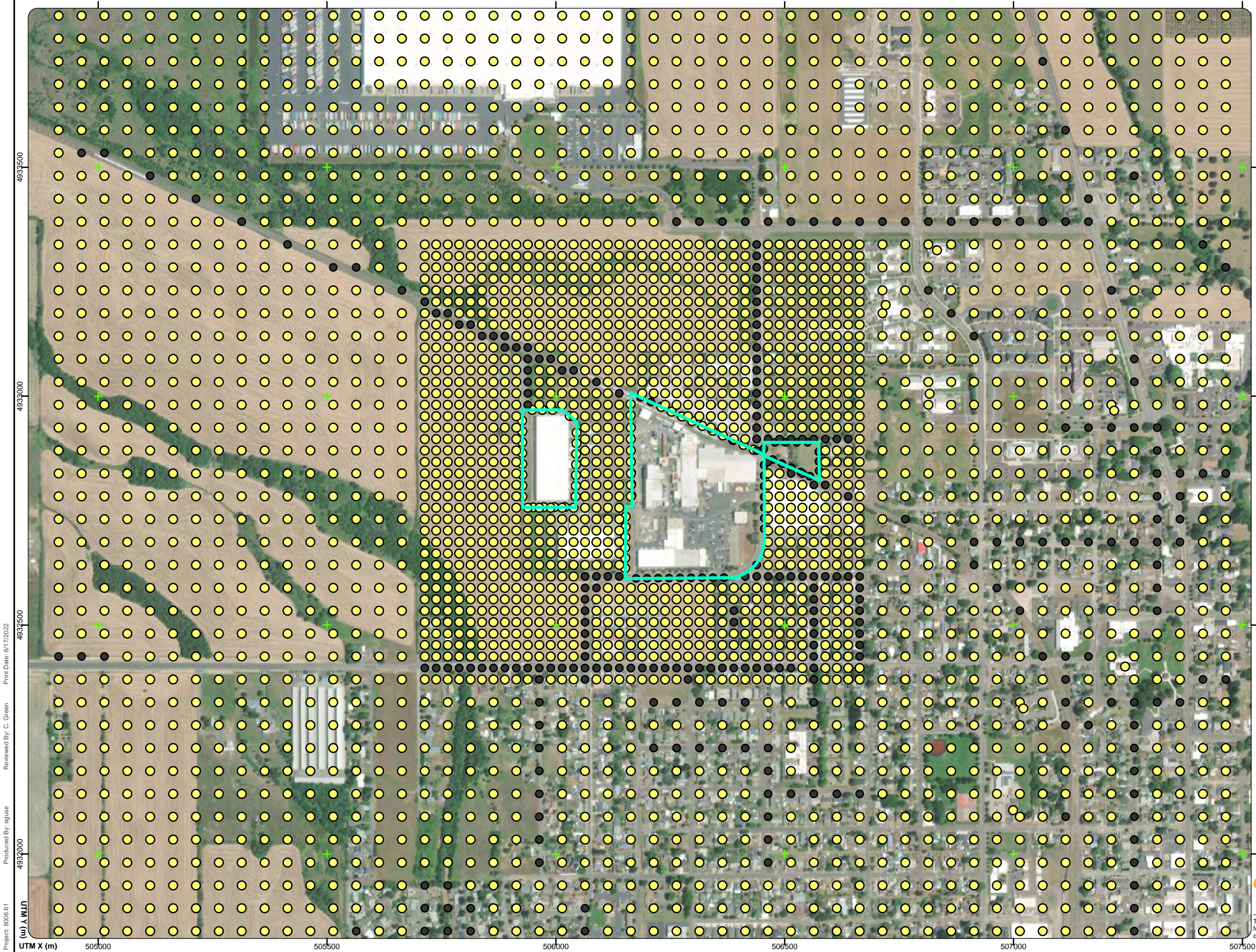
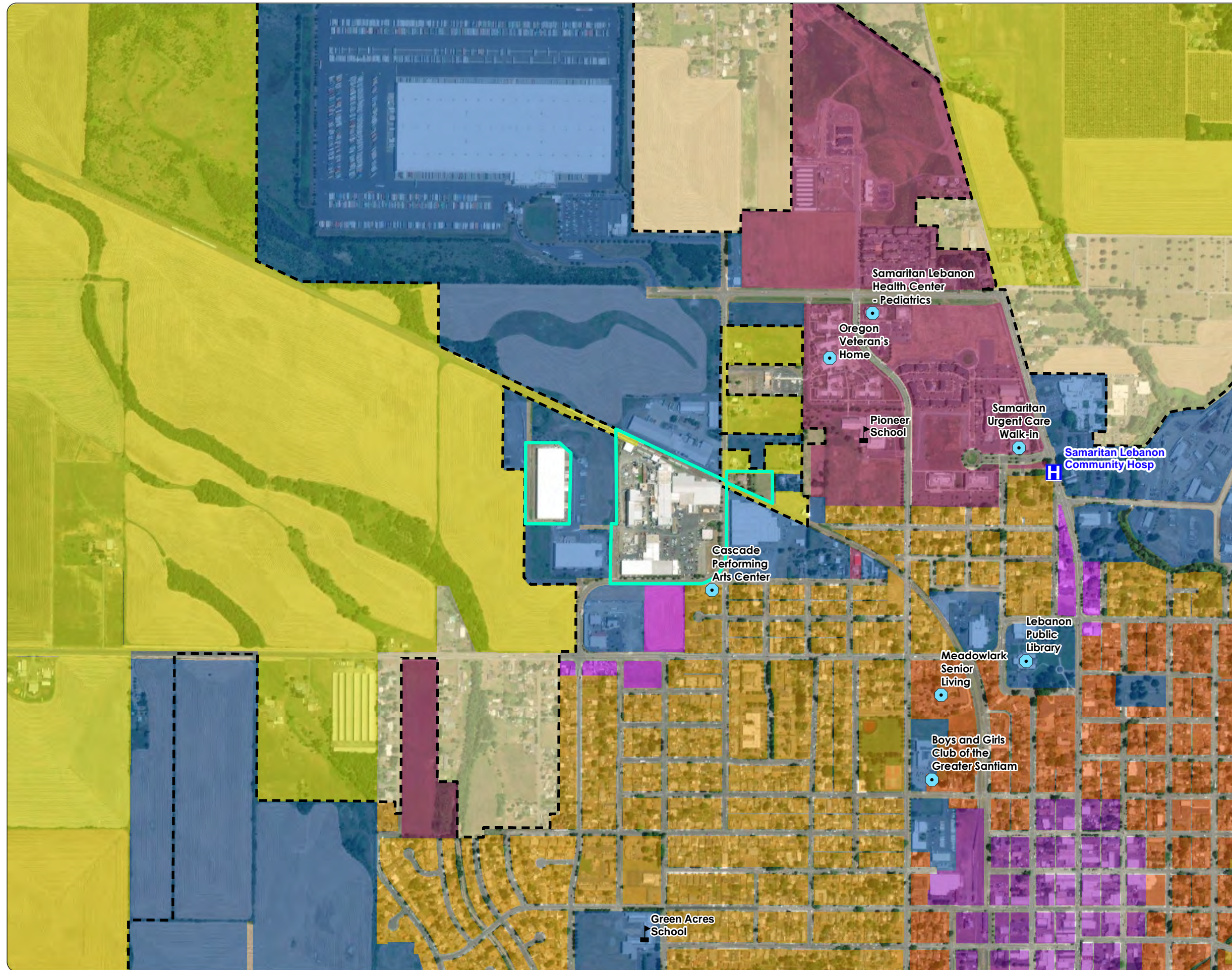
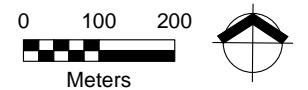


Figure 4-7
Existing Land-Use Zoning
Classifications in the
Immediate Area
 ENTEK International, LLC
 Lebanon, Oregon 97355



Legend

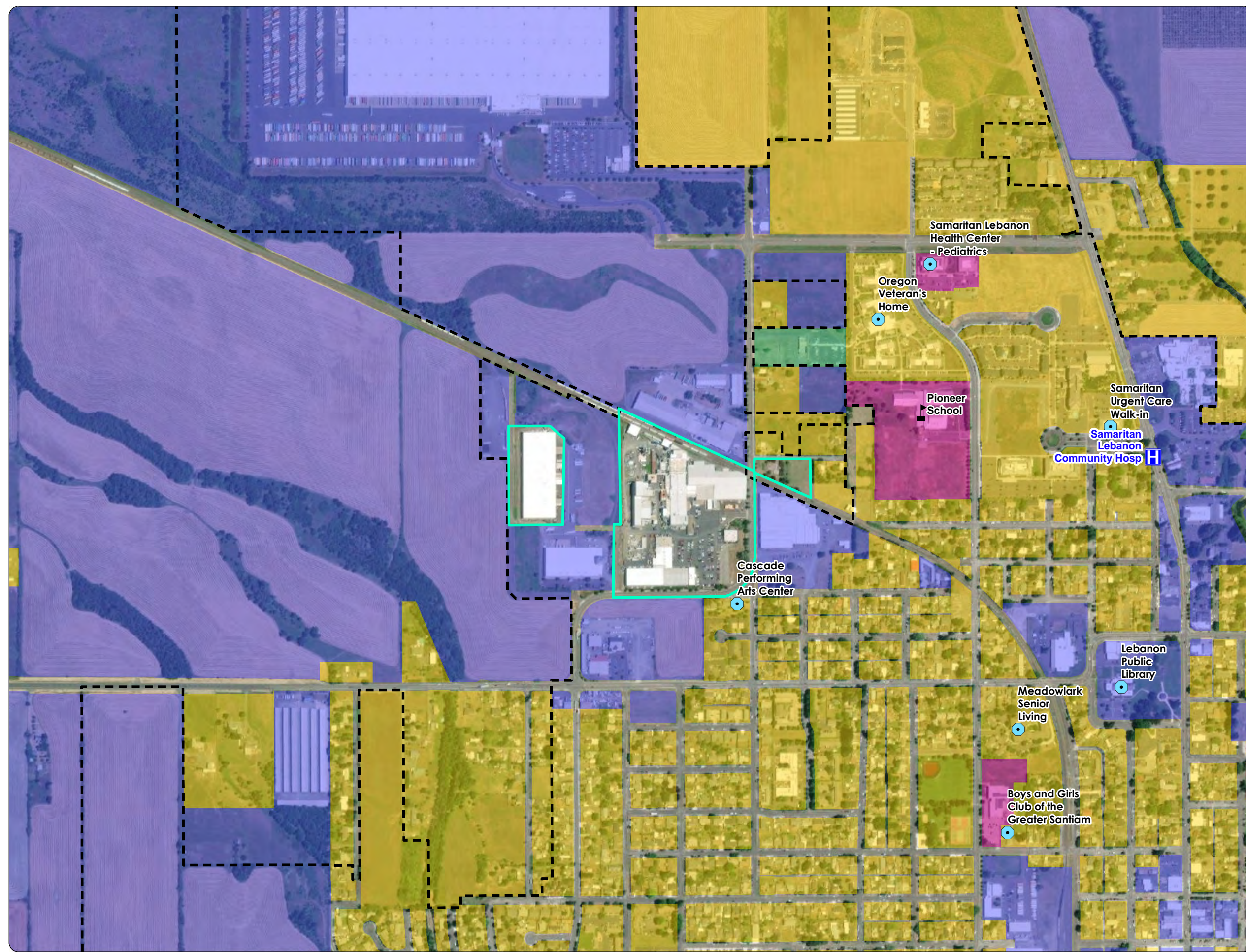
- School Location (2015-16)
- Hospital Location (2014)
- Additional Sensitive Receptor Location
- Exposure Assessment Boundary
- City Limits (2018)
- Oregon Statewide Zoning (2017)**
 - Commercial - Central
 - Commercial - General
 - Industrial - Heavy
 - Rural Residential 1 acre; Rural Residential 10 acres; Rural Residential 2-4 acres; Rural Residential 5+ acres
 - Low-density Res.
 - Medium-density Res.
 - High-density Res.
 - Mixed-Use Com. & Res. Extremely High; Mixed-Use Com. & Res. High; Mixed-Use Com. & Res. Low; Mixed-Use Com. & Res. Med-high; Mixed-Use Com. & Res. Medium; Mixed-Use Com. & Res. V.High
 - Exclusive Farm Use
 - Public & Semi-public Uses



Sources: Aerial photograph obtained from Esri ArcGIS Online. Zoning obtained from the Oregon Dept. of Land Conservation and Development. Schools obtained from Oregon Dept. of Human Services & Oregon Health Authority. Hospitals obtained from Oregon Office of Health Policy & Research.

Figure 4-9 Proposed Land Use Classifications in the Immediate Area

ENTEK International, LLC
Lebanon, Oregon 97355



Legend

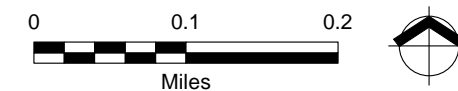
- School Location (2015-16)
- Hospital Location (2014)
- Additional Sensitive Receptor Location
- Exposure Assessment Boundary
- Proposed Modeling Domain Extent
- City Limits (2019)

Proposed Land Use Classification

RBC Basis

- Residential
- Child
- Worker
- Acute-only

- Existing land use classifications revised to reflect one of the four risk-based concentration categories presented in Oregon Administrative Rule 340-245-8040 Table 4.
- Non-taxlot land use areas (e.g., interstate right-of-way) will not be assessed for cancer or noncancer risk.



Sources: Aerial photograph obtained from Esri ArcGIS Online.

MAUL FOSTER ALONG I
p. 971 544 2139 | www.maulfooster.com

This product is for informational purposes and may not have been prepared for, or be suitable for legal, engineering, or surveying purposes. Users of this information should review or consult the primary data and information sources to ascertain the usability of the information.