

# DEQ Information Meeting

## Owens-Brockway - Portland



State of Oregon  
Department of Environmental Quality

*Zoom Meeting | April 13, 2021*

# Using Zoom Webinar

---

- Hear the audio either through your computer or by calling in by phone with the phone number provided upon registration.
- Note that you will not be able to speak unless the host enables your audio and then you unmute.

# Asking a Question

- You should see the following along the bottom of your screen.



- To ask a question: type it into the Q&A or raise your hand and the host will un-mute you. (\*9 if you're on the phone)
- Use chat if you're having technical difficulties.

# Purpose of Today's Meeting

---

## Why are we here

- Review Owens-Brockway's approved Emissions Inventory
- Get your input before DEQ reviews the facility's risk assessment
- Answer questions and hear any concerns you have related to Cleaner Air Oregon

# Cleaner Air Oregon Emissions Inventory

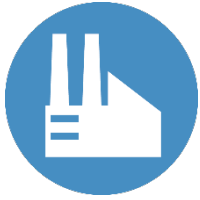
Kenzie Billings, Air Toxics Project Manager



State of Oregon  
Department of Environmental Quality

# How Cleaner Air Oregon Works

---



## **Report air toxics**

Companies to report use of over 600 pollutants to state regulators



## **Assess risk**

Facilities calculate potential health risks to people who live, work, and go to school nearby

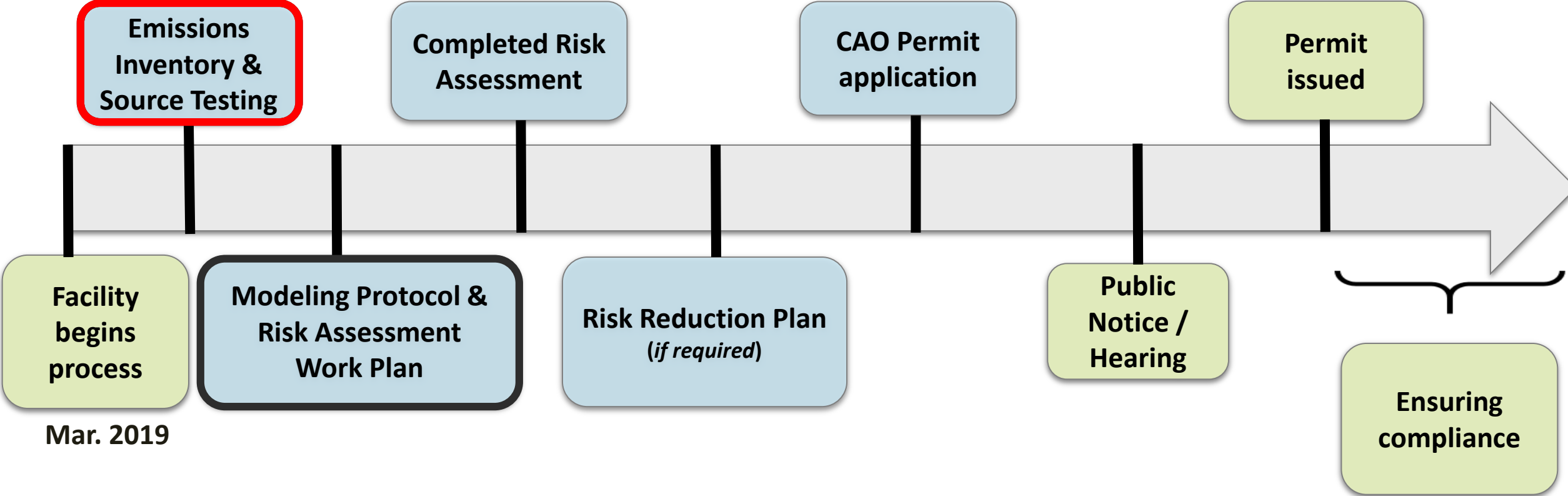


## **Regulate to reduce risk**

Companies would have to act if the levels of air toxics they emit exceed health risk action levels (RALs)

# Cleaner Air Oregon Process

We would like to share what we learned



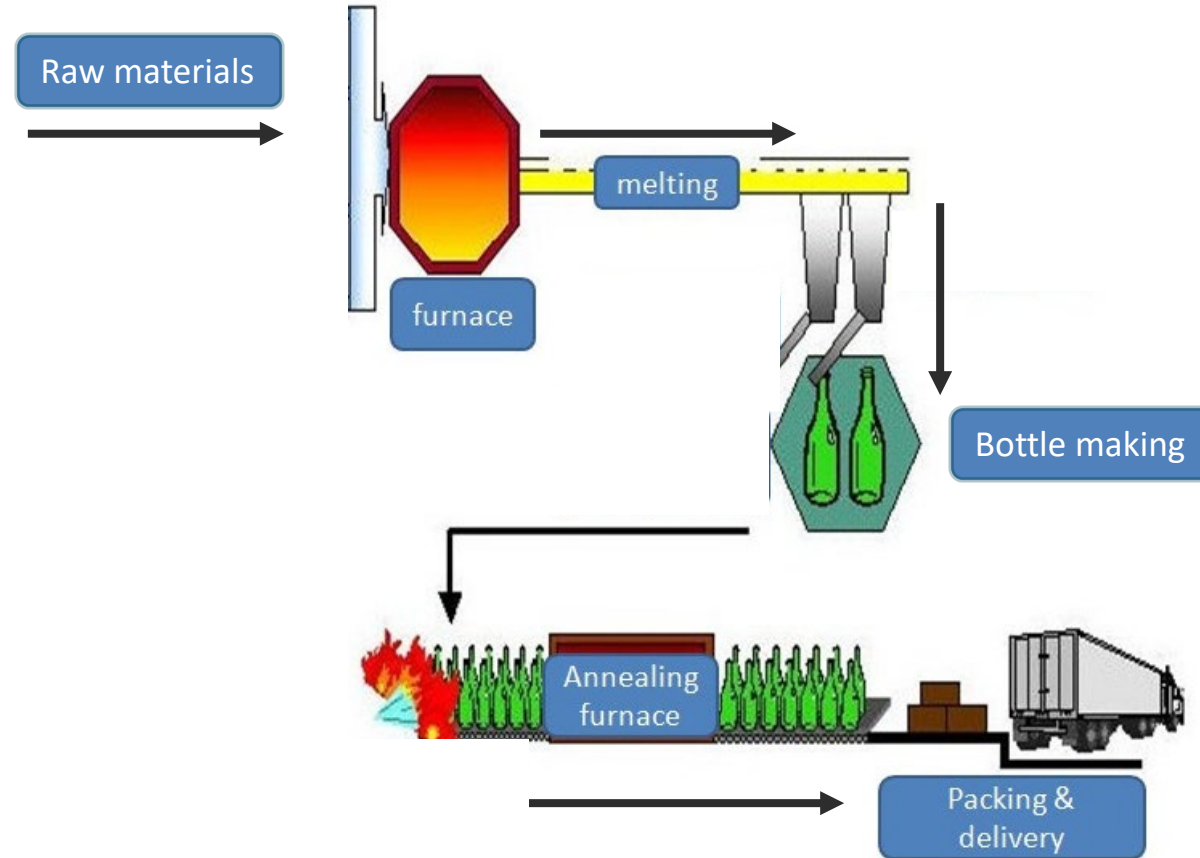
# Emissions Inventory Basics

---

- What is being emitted?
- Where are each of the emissions coming from?
- How much of each pollutant is being emitted, and at what rate?
- Are there controls? How well do they work?



# General Glass Production Process



# Owens-Brockway Emission Sources



# Owen-Brockway Emission Sources



# Owen-Brockway Emission Sources



# 2016 Emissions Inventory: Data Gaps

---

- Furnace-specific emissions data for each type of glass produced
  - Furnace A: Amber glass
  - Furnace D: Amber and green glass
- Mold repair emissions (solid film lubricant)
- Image printing emissions
- Welding emissions

# Addressing Data Gaps: Source Testing

Date	Furnace	Glass Color
May 2019	D	Green
May 2019	A	Amber
August 2020	D	Amber

# Significant Changes to Emissions Inventory

Process	Pollutant	2016 Emissions Calculations (lb/yr) – no source testing	2021 Emissions Calculations (lb/yr) – includes furnace source testing
Furnaces A and D	Chromium VI	257	0.2
Furnaces A and D	Arsenic	16	192
Furnaces A and D	Lead	463	597
Natural gas combustion, Hot End Surface Treatment	Ammonia	1789	15620

# Questions?



State of Oregon  
Department of Environmental Quality

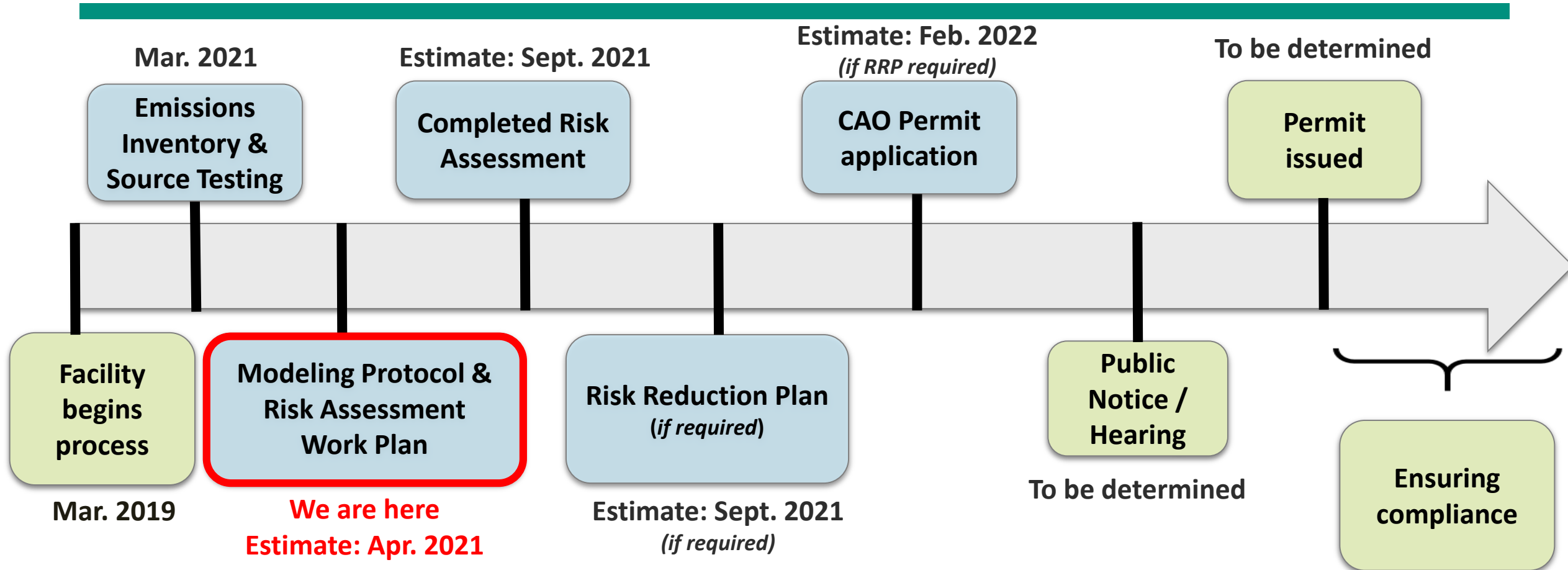


# Modeling Emissions



State of Oregon  
Department of Environmental Quality

# Cleaner Air Oregon Process

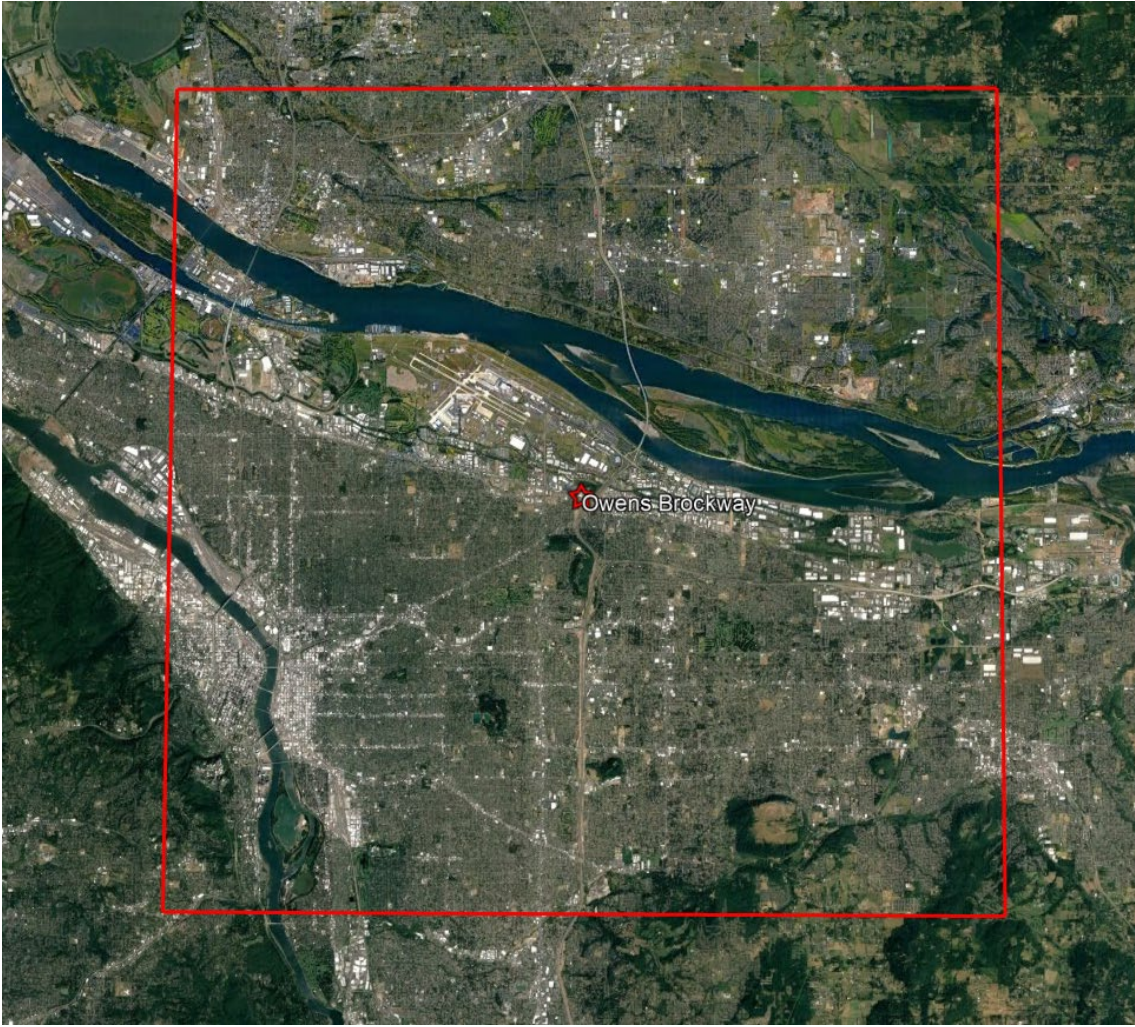


# Modeling Emissions: We Need Your Input



Are there any additional locations you are aware of where people may live, work, or play that are closer to Owens-Brockway than those we have identified?

# Modeling Emissions: We Need Your Input



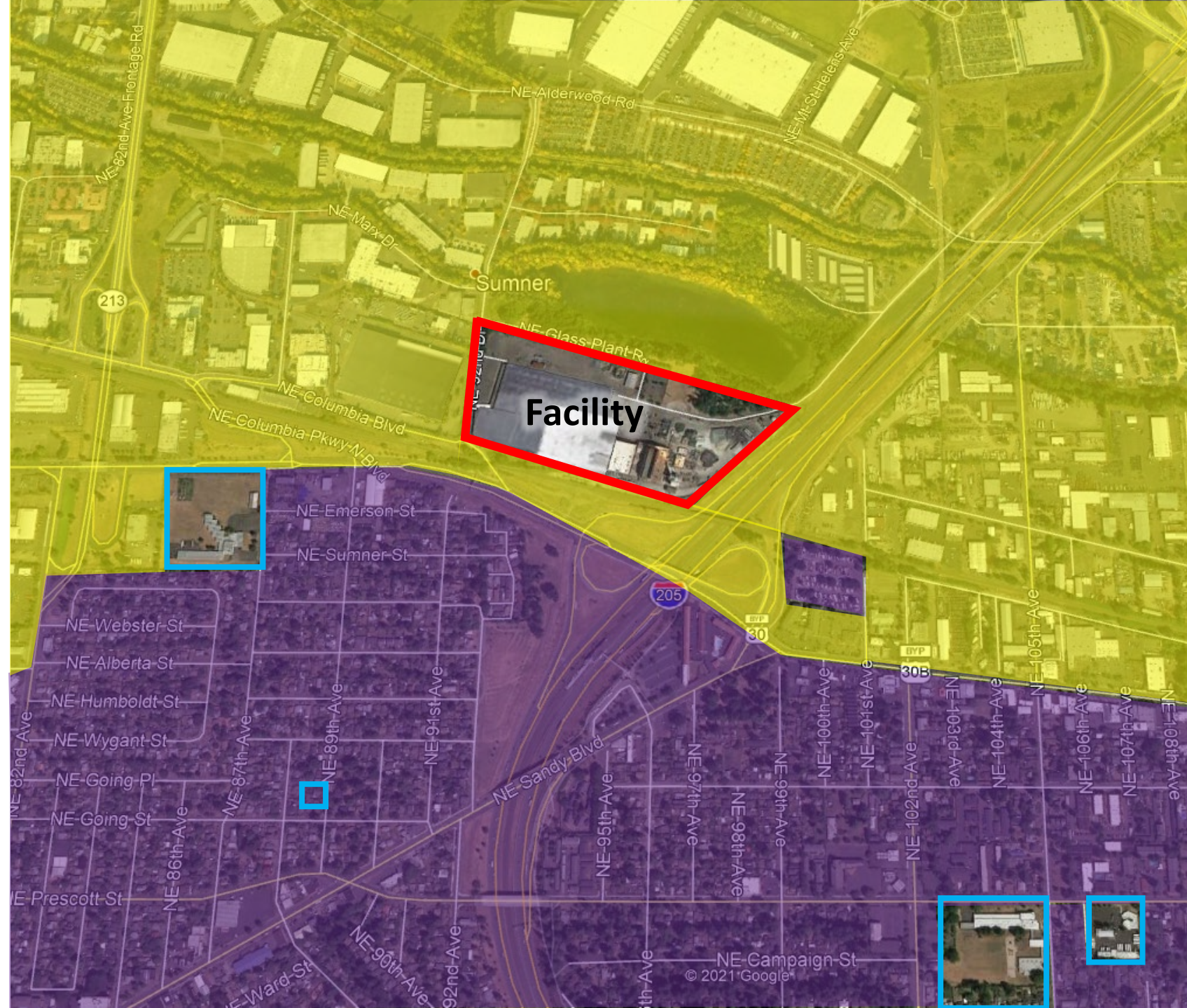
The approximate facility boundary is shown in red.

Predominant wind directions in summer (orange) and winter (blue) are shown here.



# Zoning

- Industrial = yellow
- Residential = purple
- Schools = blue squares



To your knowledge, are the schools, daycares, and parks identified here the closest ones to Owens-Brockway?

### Nearby Schools

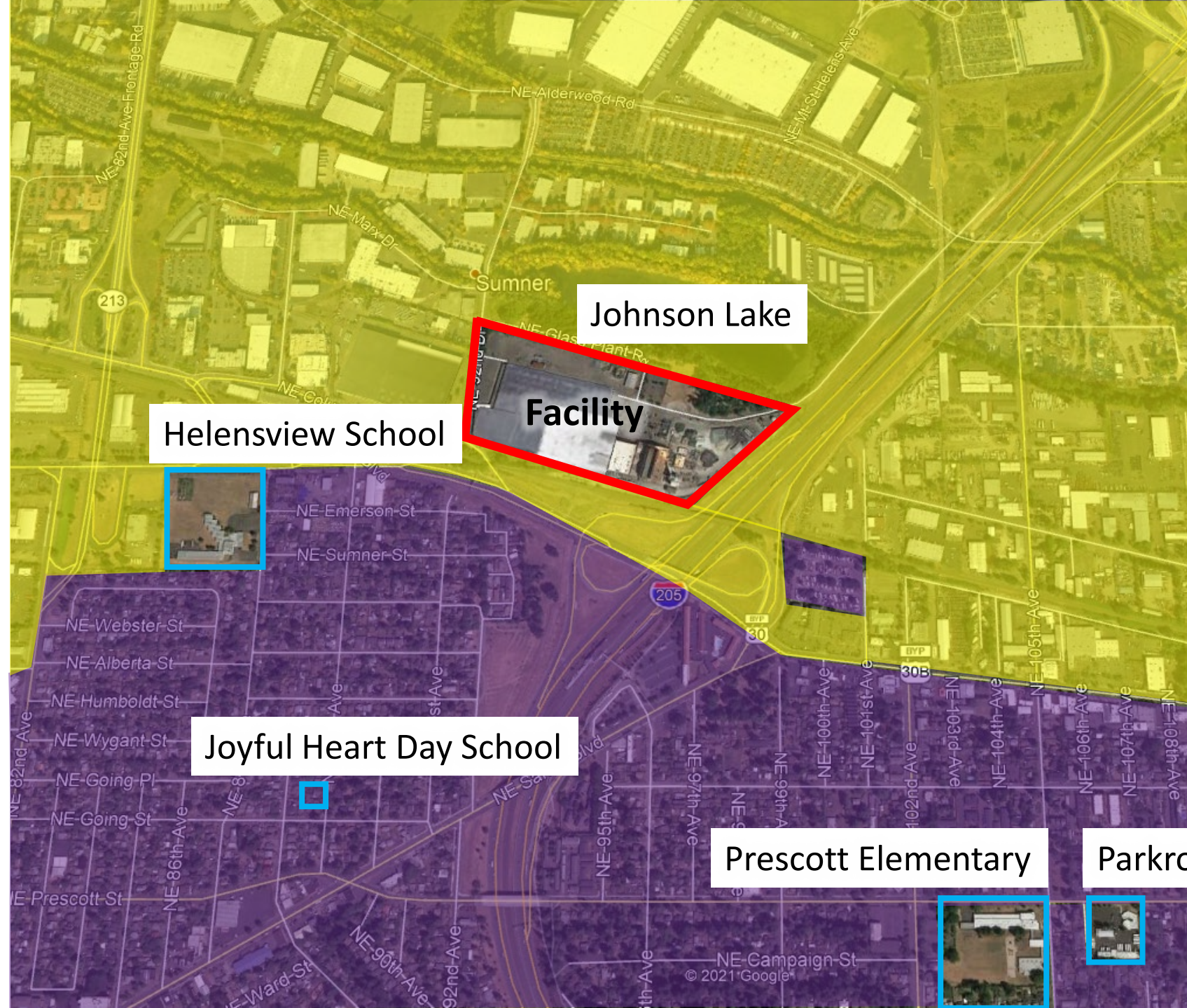
- **Helensview (0.25 miles)**
- Prescott Elementary (0.6 miles)
- Parkrose (0.7 miles)

### Nearby Daycares

- **Joyful Heart Day School (0.5 miles)**
- Bridgetown Daycare (1 mile, not pictured)
- Discovery Gardens Childcare (1 mile, not pictured)

### Nearby Parks

- **Johnson Lake (fenceline)**
- Rocky Butte (0.9 miles, not pictured)
- Cully Park (1 mile, not pictured)



**To your knowledge,  
are the homes  
identified by white  
arrows the closest  
ones to Owens-  
Brockway?**

**Closest Homes (0.1 -  
0.2 miles)**

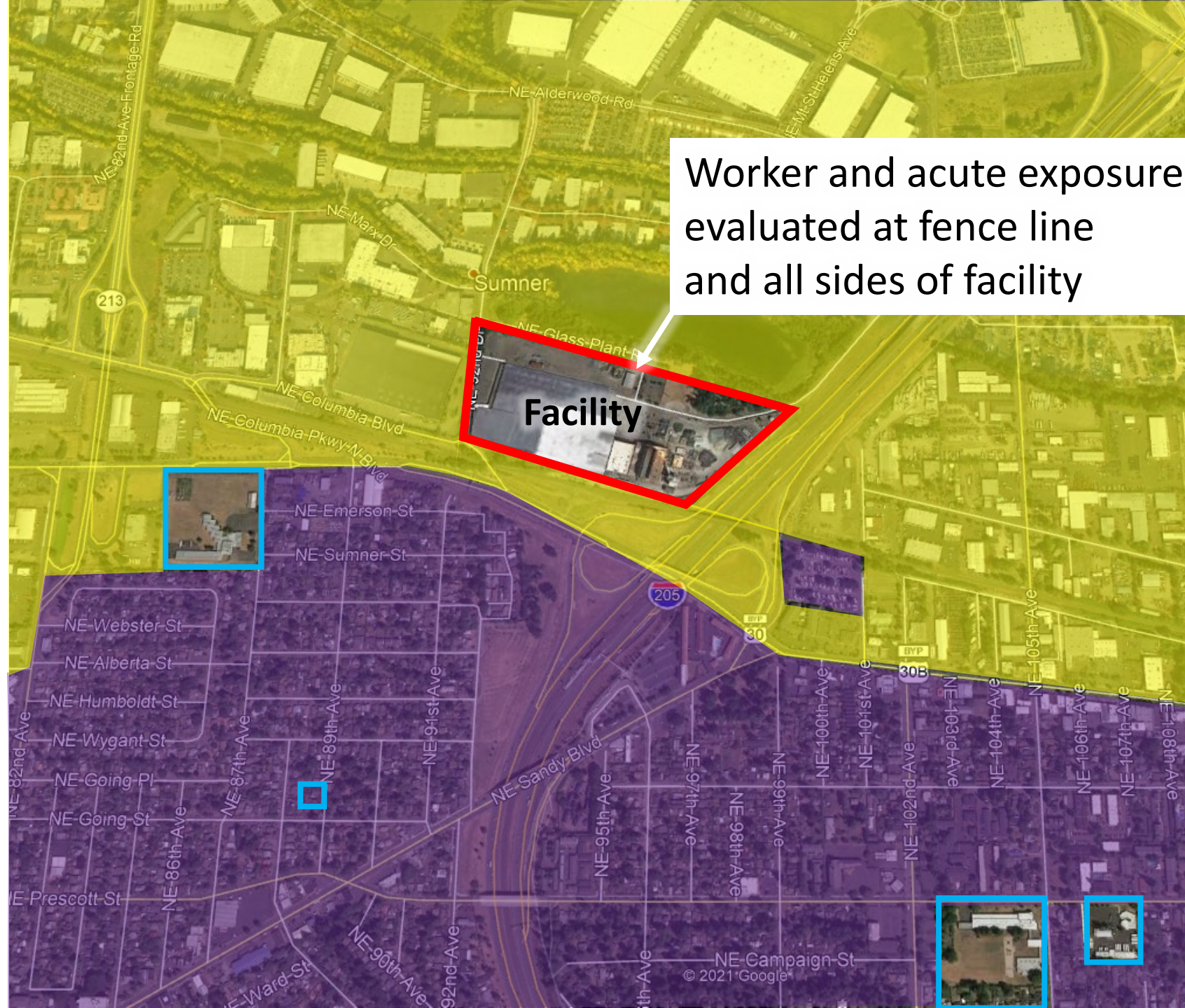




**To your knowledge, are the workplaces identified here the closest ones to Owens-Brockway?**

### **Nearby Workers**

- All sides of facility
- Closest evaluated at fence line



# We need your input

- **Are you aware of any homes schools, daycares, parks, or places of work closer to Owens-Brockway than those identified on the previous slides?**
- Modeling information is available for your review on the CAO facility webpage: <https://www.oregon.gov/deq/aq/cao/nwr/Pages/Owens-Brockway.aspx>
- Please call or email Raul Preciado-Mendez with any comments on receptor locations by **April 30, 2021**

**Phone:** (503) 896-0026

**Email:** [raul.preciadomendez@state.or.us](mailto:raul.preciadomendez@state.or.us)



# Questions?



State of Oregon

**DEQ**

Department of Environmental Quality

# What comes next?

---

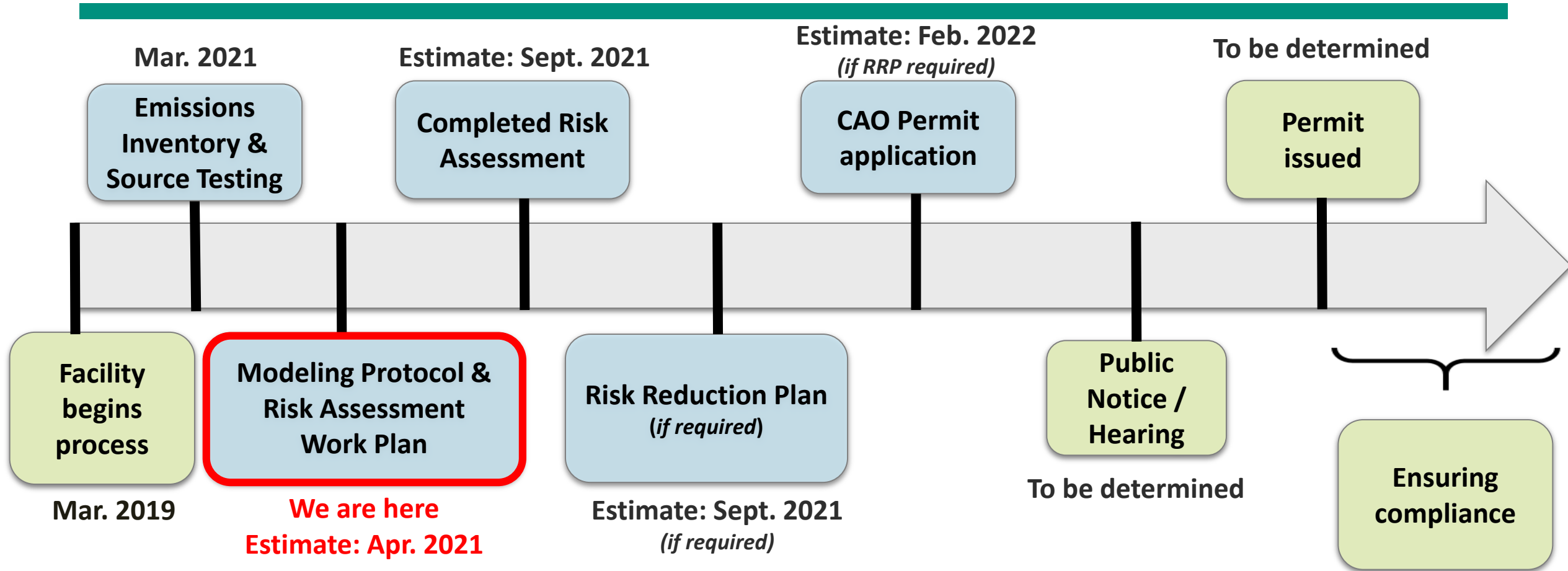
- DEQ will evaluate your feedback on receptor locations and require the facility to make any necessary changes for modeling
- Modeling information is available for your review on the CAO facility webpage
- Please call or email Raul Preciado-Mendez with any comments on receptor locations by **April 30, 2021**

**Phone:** (503) 896-0026

**Email:** [raul.preciadomendez@state.or.us](mailto:raul.preciadomendez@state.or.us)



# Cleaner Air Oregon Process



# Thank you!



State of Oregon  
Department of Environmental Quality