



# Community Climate Investments

## Entity Application Pre-application Call #1

1/15/2026 10 am  
Zoom

# Thank you for joining us!

- This call is open to everyone but is intended for interested non-profits seeking to apply to become an approved CCI entity.
- Slides will be covered first and then DEQ will open it up for questions. At that time, please “Raise” your hand using the raise hand function at the bottom of your screen. You can also put questions in the chat. If dialed in, use \*9 to raise your hand.
- If the question cannot be answered at this time, DEQ will try to post the response within two weeks.

# What is the purpose of this session?

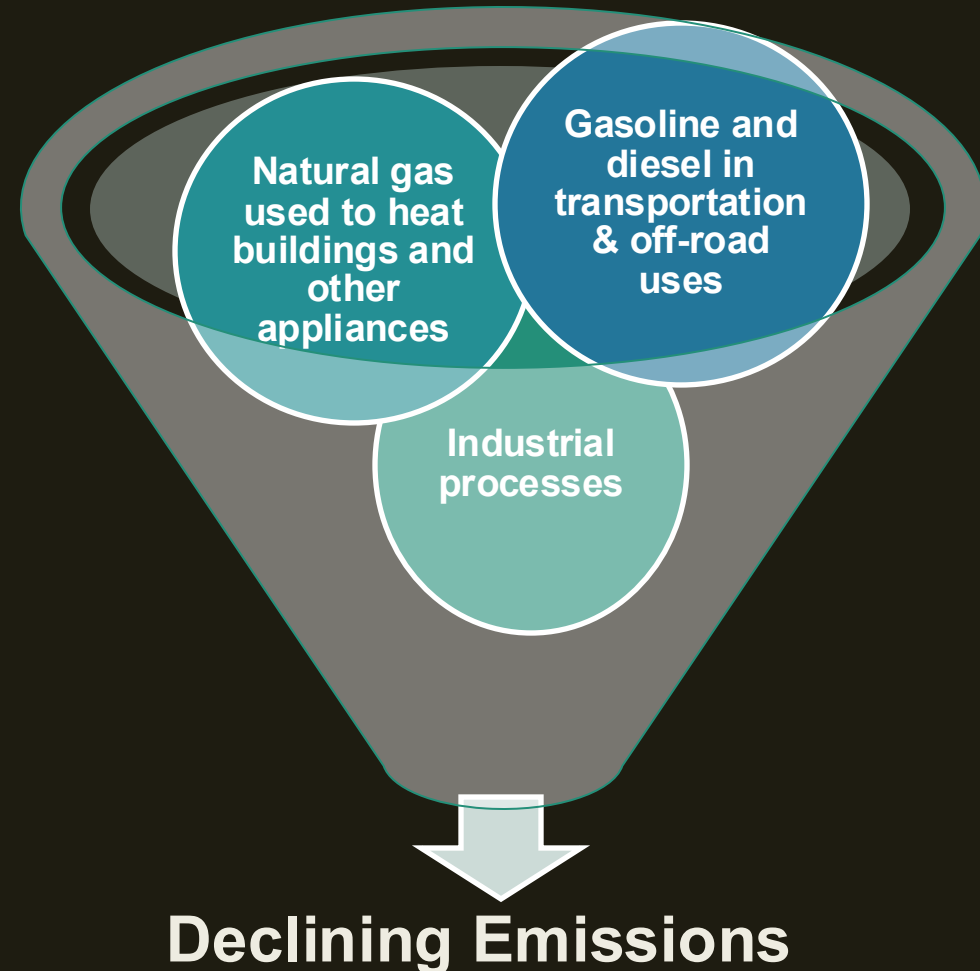
- To explain the program at a high level, the application process, and allow potential applicants to ask basic questions about the application.
- Nothing said here today by DEQ should be construed as a change to the written requirements of the RFA.
- Any official changes to the RFA will be made via an addendum to the RFA and posted on the DEQ [CCI website](#).
- Questions may be submitted to DEQ through February 27, 2026. DEQ will post responses on the [CCI website](#).
- DEQ will try to respond to questions submitted after that deadline but cannot guarantee a response by the closing date March 20, 2026.

# What is the Climate Protection Program?

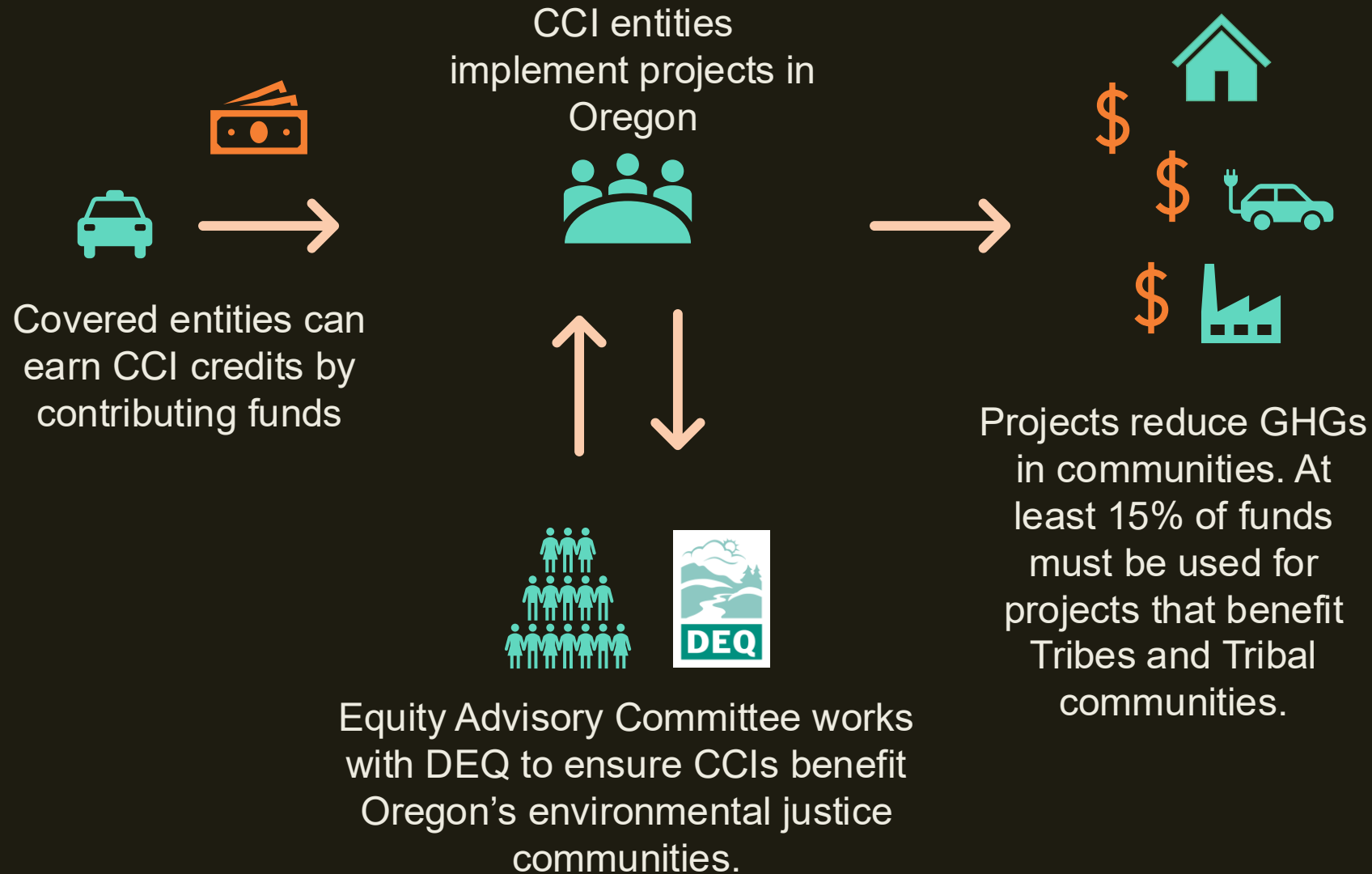
Cornerstone of Oregon's carbon pollution reduction goals

Places limits on climate pollution in across multiple sectors

- Residential
- Commercial
- Industrial
- Transportation



# Community climate investments





# Community climate investment priorities

• Promote public health, environmental, and economic benefits for environmental justice communities

- **Promote** public health, environmental, and economic benefits for environmental justice communities
- **Accelerate** the transition to clean energy particularly in or near environmental justice communities
- **Reduce** other air pollutants, particularly in or near environmental justice communities
- **Reduce** greenhouse gas emissions on average at least one ton per CCI credit



# What projects can be supported by these funds?

- Actions that reduce greenhouse gas emissions from:
  - Transportation of people or freight
  - Residential buildings
  - Industrial processes or facilities
  - Commercial buildings





# How are these funds used?



- Administering CCI funds and projects
- Project implementation
- Capacity building





# Fee for CCI entity

- Approved by 2023 legislature and adopted in last year's rulemaking
- Collected from approved CCI entities twice annually
- Up to 4.5% of all contributions in that timeframe
- Supports DEQ's oversight, including auditing and regular reporting on program goals

# Requirements of a CCI entity

Accepting Funds

Holding Funds

Work Plan: Development, Approval, and Implementation

Annual Reports

Auditing

# Successful applicants will be 501c3 non-profits with:

- Strong and transparent financial controls and systems for managing and implementing funds received directly from regulated entities.
- Experience with and trust in engaging, partnering with, and uplifting underrepresented communities in Oregon.
- Experience developing and delivering projects that will achieve reductions in greenhouse gas emissions and co-pollutants in environmental justice communities.

# Scoring:

- Financial information – 35 points
  - Project experience – 25 points
  - Comprehensive management plan and proposed projects – 20 points
  - Key persons and any known partners or subcontractors – 15 points
  - References – 5 points
- 
- **Total potential: 100 points**



# Working timeline

**2025**

**Q1**

Post and recruit  
for the Equity  
Advisory  
Committee (EAC)

**Q2**

Review  
committee  
member interest

**Q3**

First EAC  
meeting, CCI  
entity info  
session

**Q4**

Second EAC  
meeting

**2026**

**Q1**

Post and close  
RFA, review  
responses

**Q2**

Select CCI entity  
or entities and  
begin drafting  
agreements

**Q3**

Negotiating  
agreement (s)

**Q4**

Complete  
agreement (s),  
companies can  
choose to earn  
CCIs

# Application dates

- Next pre-application call is Feb 11 at 2 p.m.
- Deadline to submit questions is Feb 27 at 5 p.m.
- Deadline to submit applications is Mar 20 at 4 p.m.

# Questions?

- “Raise” your hand using the raise hand function at the bottom of your screen. If dialed in, use \*9 to raise your hand.
- You can also put your question in the chat.
- We will call on folks in the order that they raise their hand followed by questions in the chat.
- If a question cannot be answered now, we will try and respond within two weeks.

# Contact us!

For any questions related to Community Climate Investments and this Application, please visit the [website](#) and/or contact:

Whitney Dorer, [whitney.dorer@deq.oregon.gov](mailto:whitney.dorer@deq.oregon.gov)

[CPP.INFO@deq.oregon.gov](mailto:CPP.INFO@deq.oregon.gov)





# Title VI and alternate formats

DEQ does not discriminate on the basis of race, color, national origin, disability, age, sex, religion, sexual orientation, gender identity, or marital status in the administration of its programs and activities.

Visit DEQ's [Civil Rights and Environmental Justice page](#).

[Español](#) | [한국어](#) | [繁體中文](#) | [Русский](#) | [Tiếng Việt](#) | [العربية](#)  
Contact: 800-452-4011 | TTY: 711 | [deqinfo@deq.oregon.gov](mailto:deqinfo@deq.oregon.gov)