



Recycling Modernization Act Webinar for Local Governments

March 21, 2024

Speakers



Arianne Sperry, DEQ RMA Implementation Lead

arianne.sperry@deq.oregon.gov



Alex Bertolucci, DEQ RMA team

alex.bertolucci@deq.oregon.gov



Kim Holmes, Consultant to Circular Action Alliance

kholmes@4rsustainability.com

Agenda



DEQ

1. RMA overview
2. New obligations and funding
3. Upcoming milestones for local governments
4. Key takeaways



CAA

1. Introduction to Circular Action Alliance
2. Oregon Recycling System Optimization Project
3. Funding discussions
4. Key takeaways

How to engage with us today

Questions? Put them in the Q&A.

We will answer some today and will follow up with answers.



About Materials Management

The 2050 Vision describes how people in Oregon:



Produce and use materials



Conserve resources



Protect the environment



Live well

Materials Management in Oregon

2050 Vision and Framework for Action

Adopted by the
Environmental Quality Commission
December 6, 2012

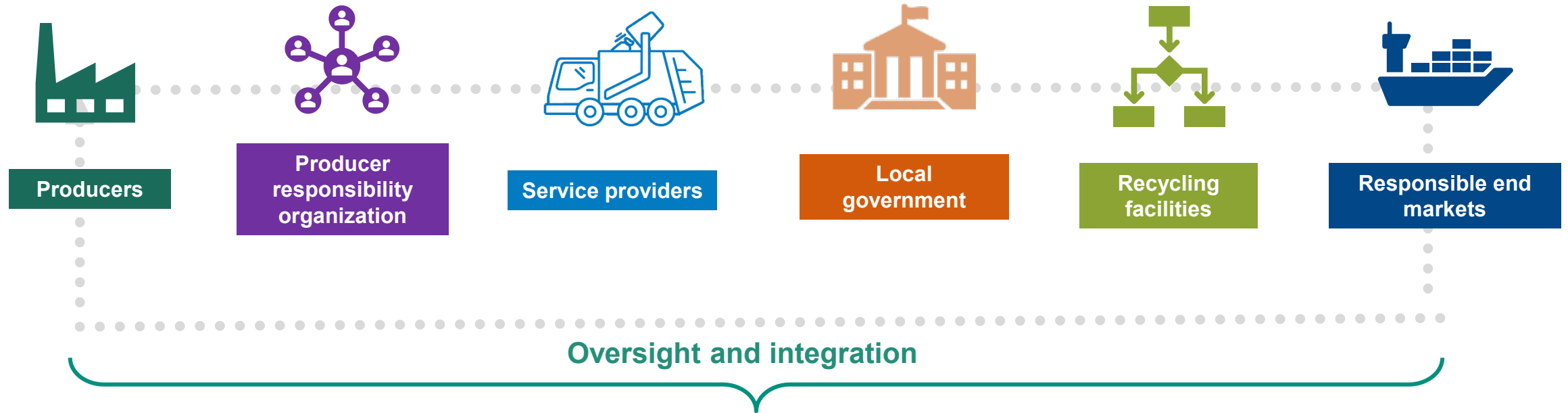


State of Oregon
Department of
Environmental
Quality

How did we get here?



Shared responsibility system



Scope of the RMA

Examples of items on the Uniform Statewide Collection List and the PRO Depot List



Examples of exempted products under the RMA



Examples of items covered by the Bottle Bill





A Modernized Recycling System

Expanded recycling services

Funding for recycling infrastructure and transportation subsidies



Statewide collection list

Oregon commits to recycling *better*



Recycling improvements for multi-tenant properties

Recycling services and infrastructure for dwellings of five or more units



Material processing

New standards for sorting quality, managing contamination, and paying workers a living wage.



Education and contamination reduction

Engaging communities directly in system improvement

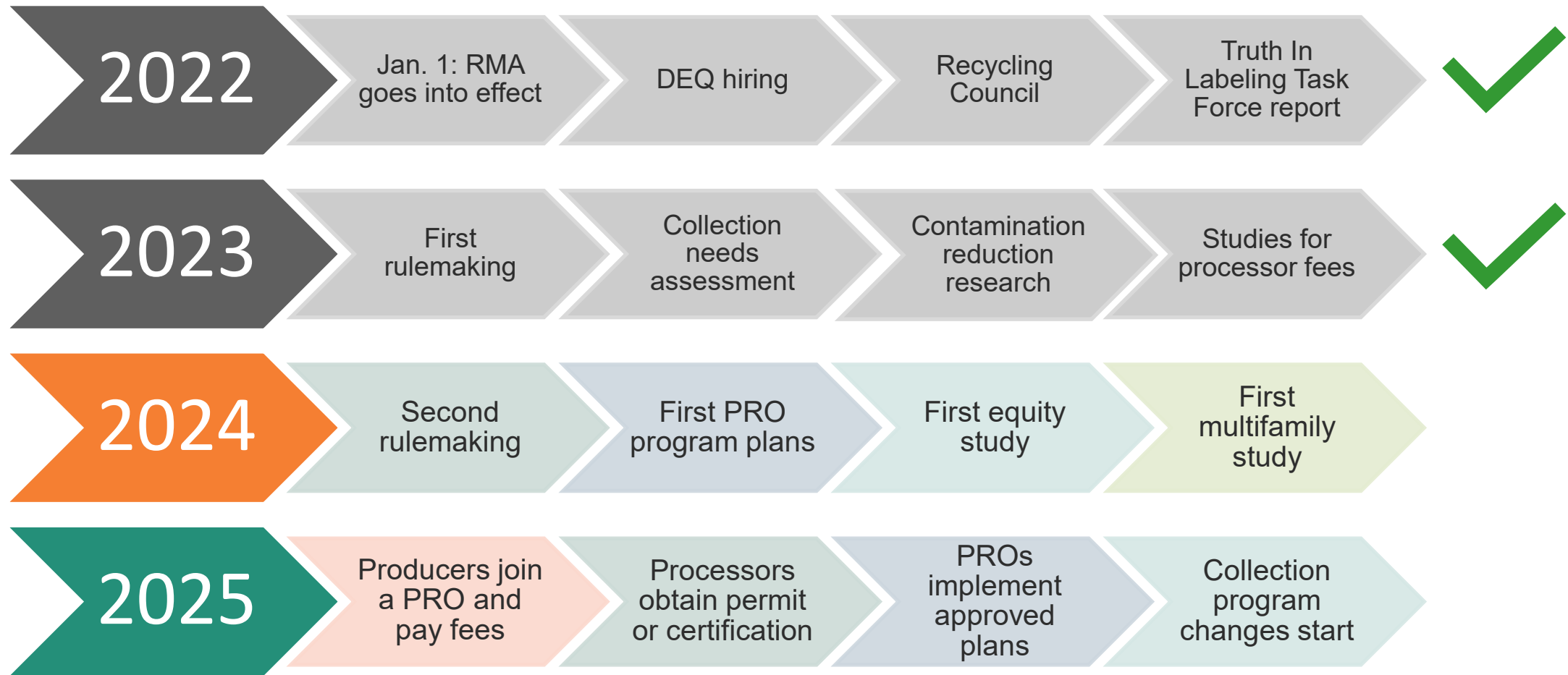


Producer involvement

Producers now pay about 1/3 of all system costs



Implementation Progress



New statewide recycling lists

- Local Government Acceptance List
 - Uniform Statewide Collection List (materials that can be commingled)
 - A few other materials
- PRO Recycling Acceptance List
 - Materials PRO must collect
 - Harder to recycle materials

Fact Sheet

Oregon Adopted Recycling Acceptance Lists

Updated December 2023

Beginning July 2025, all Oregon community members and businesses throughout the state can recycle a consistent set of materials. The Oregon Environmental Quality Commission adopted the following recycling acceptance lists on Nov. 16, 2023. These lists may change over time. For example, producer responsibility organizations may propose to add materials to the Uniform Statewide Collection List in their program plans.

Local government acceptance lists

DEQ requires local governments to collect the following materials under their Opportunity to Recycle obligations in the modernized system.

Uniform statewide collection list

To be collected at depots and on-route collection, and suitable for commingled collection:

Corrugated cardboard (uncoated and recycle-compatible coated; clean pizza boxes OK)		All kraft paper (brown paper bags, mailers)	
Paperboard packaging (e.g., cereal, cracker and medicine boxes)		Molded pulp packaging (e.g., egg cartons, but not food serviceware or flower pots)	
Polycartons (e.g., milk cartons, aseptic cartons)		Tissue paper used as packaging (not facial or sanitary tissue)	

Translation or other formats
Español | 한국어 | 繁體中文 | Пусуәк | Tiếng Việt | العربية
800-452-4011 | TTY: 711 | deqinfo@deq.oregon.gov

State of Oregon
Department of Environmental Quality

Local Government Acceptance List:

Uniform Statewide Collection List

Corrugated cardboard



Molded pulp packaging



Paperboard boxes



Newspaper and magazines



Plastic bottles



Plastic tubs



Kraft paper



Cartons



Office and other paper



Aluminum cans



Steel cans



Scrap metal



Paper back books, telephone directories



Tissue paper and gift wrap



Nursery pots



Plastic buckets, pails, storage containers



Local Government Acceptance List:

Other Materials

Collected at Depots - segregated from other materials, not commingled

Motor oil



Scrap metal, including large appliances



Metro Region only

Glass packaging (bottles, jars): non-residential on-route only



Yard debris (at depots and by collection service customers)



PRO Acceptance List

Aerosol cans



Shredded paper



Pressurized canisters



Polyethylene film



Aluminum foil



6-pack handles



Glass bottles and jars



Lids



Bulky plastic containers



Block white expanded polystyrene



Required for all local governments



Opportunity to Recycle depots – Jul. 2025



Ensure that commingled materials go to approved processors – Jul. 2025



Only material on the USCL may be collected commingled – Jul. 2025



Purchase collection containers with recycled content – Jan. 2026

Required for cities $\geq 4,000$

areas inside their UGBs, cities in Metro Service District



Collect materials designated for recycling collection from on-route customers at least monthly – Jul. 2025



Implement new contamination reduction programs – Jul. 2025

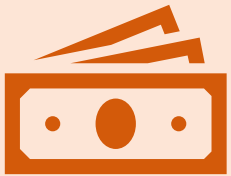


Use USCL educational resources created by PRO – Jul. 2025



Offer service to multi-tenant properties; ensure adequate space for multifamily collection – Jul. 2026

Optional For All Communities



Authorize service providers that may receive compensation directly from PRO - Compensation begins Jul. 2025; designation begins earlier



Participate in future needs assessments to expand recycling collection and service provider identification – 2026

PRO Funding

1. Recycling service expansion

2. Transportation

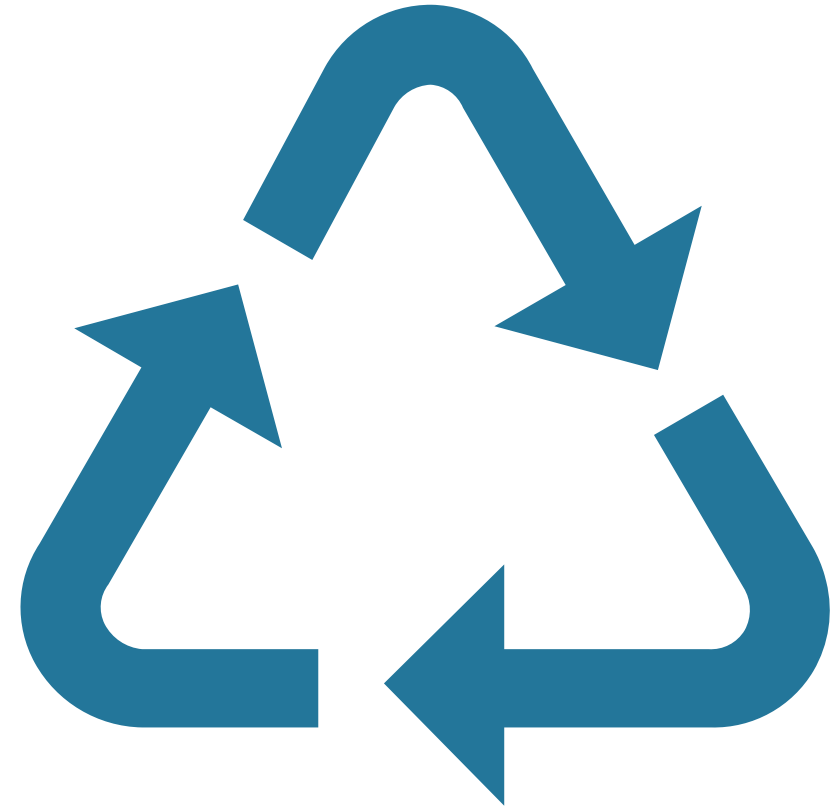
3. Contamination reduction programming

4. Contamination evaluation

5. Recycled content collection containers

1. Recycling service expansion

- New and expanded collection services and depots:
 - Start-up costs for on-route programs
 - Start-up and operational costs for recycling depots
- Requests made through 2023 needs assessment
- Details determined in agreement with PRO



2. Transportation

- Distances more than 50 miles
- From depot or reload to nearest processor or end market
- Receive, consolidate, load, transport (includes staffing)
- Covered products only



3. Contamination reduction programming

- Conduct contamination reduction programming
- Up to \$3 per capita per year
- Available to all communities



4. Contamination evaluation

- Required contamination evaluation
- Evaluation that does **not** occur at a recycling processor



5. Recycled content collection containers

- Compliance with recycled content requirement
- Begins January 1, 2026



Funding authorization (service provider designation)

- Local governments may choose to designate service providers or other entities to receive PRO funding directly
- May authorize some, all, or none of the funding
- Authorization can vary by type of funding
- Consider who will be incurring eligible costs

Funding authorization process

Fall 2024

Review of draft authorization forms

December 2024

Final forms sent to local governments

Spring 2025

Authorization forms due to DEQ

Annual update each winter for changes effective July 1

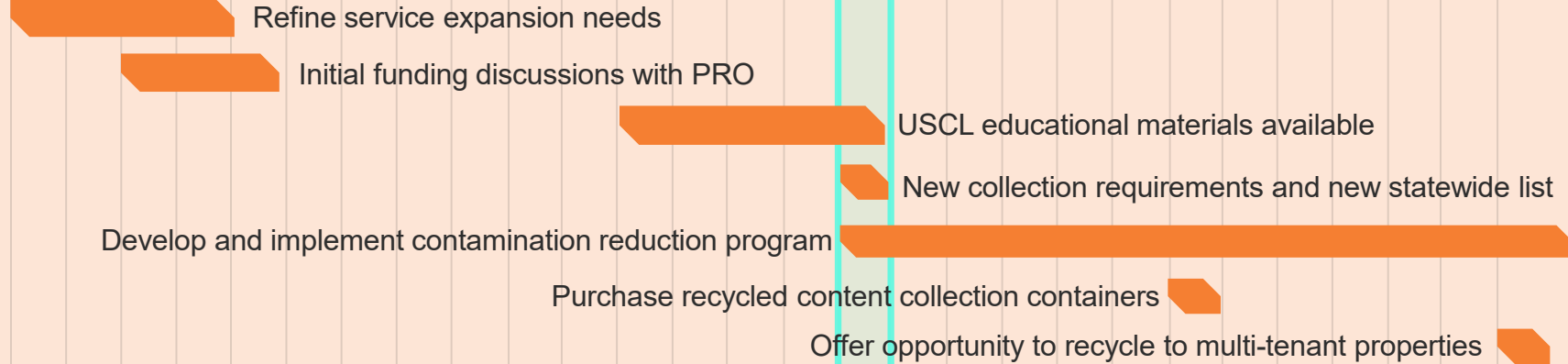
2024

2025

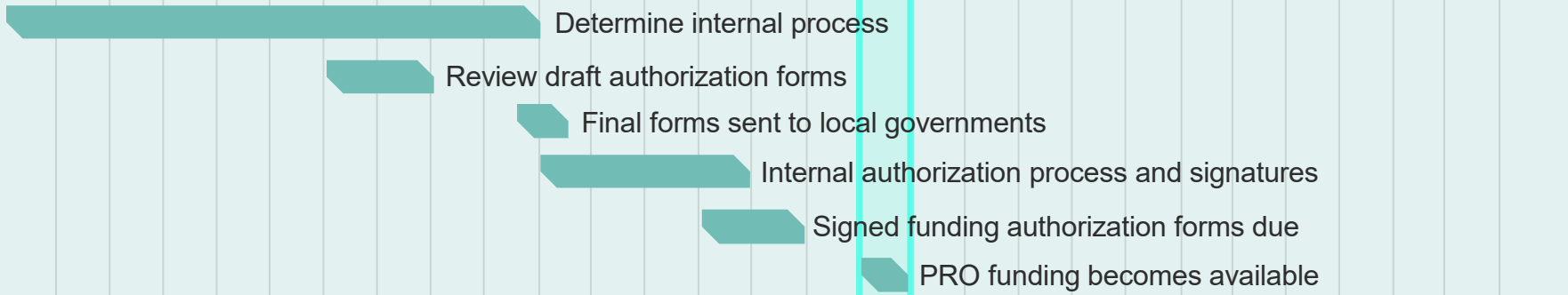
2026

Mar Apr May Jun Jul Aug Sep Oct Nov Dec Jan Feb Mar Apr May Jun Jul Aug Sep Oct Nov Dec Jan Feb Mar Apr May Jun Jul

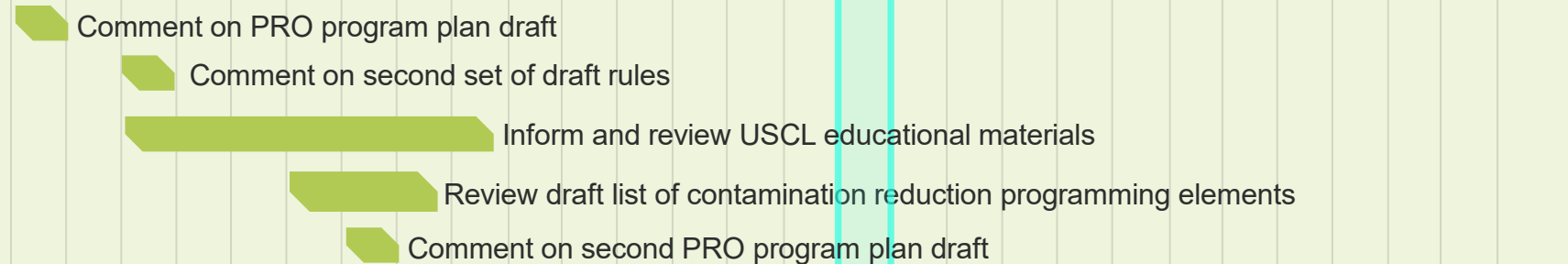
Recycling system changes



Funding Authorization



Opportunities for engagement



RMA Launch



Action steps

- 1 Talk with service providers and partners
- 2 Determine internal process for funding authorization
- 3 Complete the PRO contact survey

More information



Learn more on the
RMA website



Sign up for RMA
newsletter via
GovDelivery



More details on new
local govt. requirements
coming soon from your
DEQ regional specialist

Webinar follow-up

Slides posted

FAQ and
additional
resources sent out

Questions?



Thank you!

Notice of non-discrimination

DEQ does not discriminate on the basis of race, color, national origin, disability, age or sex in administration of its programs or activities. Visit DEQ's [Civil Rights and Environmental Justice page](#).

Translation or other formats

[Español](#) | [한국어](#) | [繁體中文](#) | [Русский](#) | [Tiếng Việt](#) | [العربية](#)

800-452-4011 | TTY: 711 | deqinfo@deq.oregon.gov

Resources

- [Local government survey: contacts for PRO funding discussions](#)
- [General RMA website - RecyclingAct.Oregon.gov](#)
- [Adopted Recycling Acceptance Lists](#)
- [RMA GovDelivery](#)



**Circular
Action
Alliance**

CAA introduction and overview

March 21, 2024

Who is Circular Action Alliance?

Circular Action Alliance (CAA) is a nonprofit 501(c)(3) established to support the successful implementation of EPR laws for paper and packaging in the U.S.

CAA was officially incorporated in December 2022 and 20 companies from the food, beverage, consumer goods, and retail industries serve as Founding Members.

CAA has been approved to be the PRO in California, Colorado and Maryland.



CAA Structure

- CAA is a non-profit PRO with a mission to provide best-in-class compliance services to all producers across multiple states.
- As a national services organization, CAA will support the implementation of state EPR programs through compliance tools and resources, such as a reporting portal for producers.
- Our priority is to implement program plans that are responsive to the needs of each state and enhance materials management through system improvements and local operations.



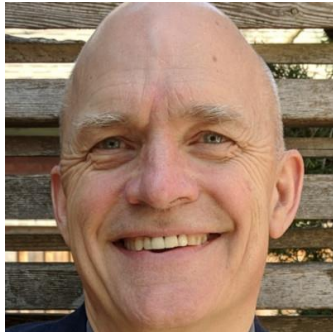
Oregon support team



Francis Veilleux



Kim Holmes



Doug Mander



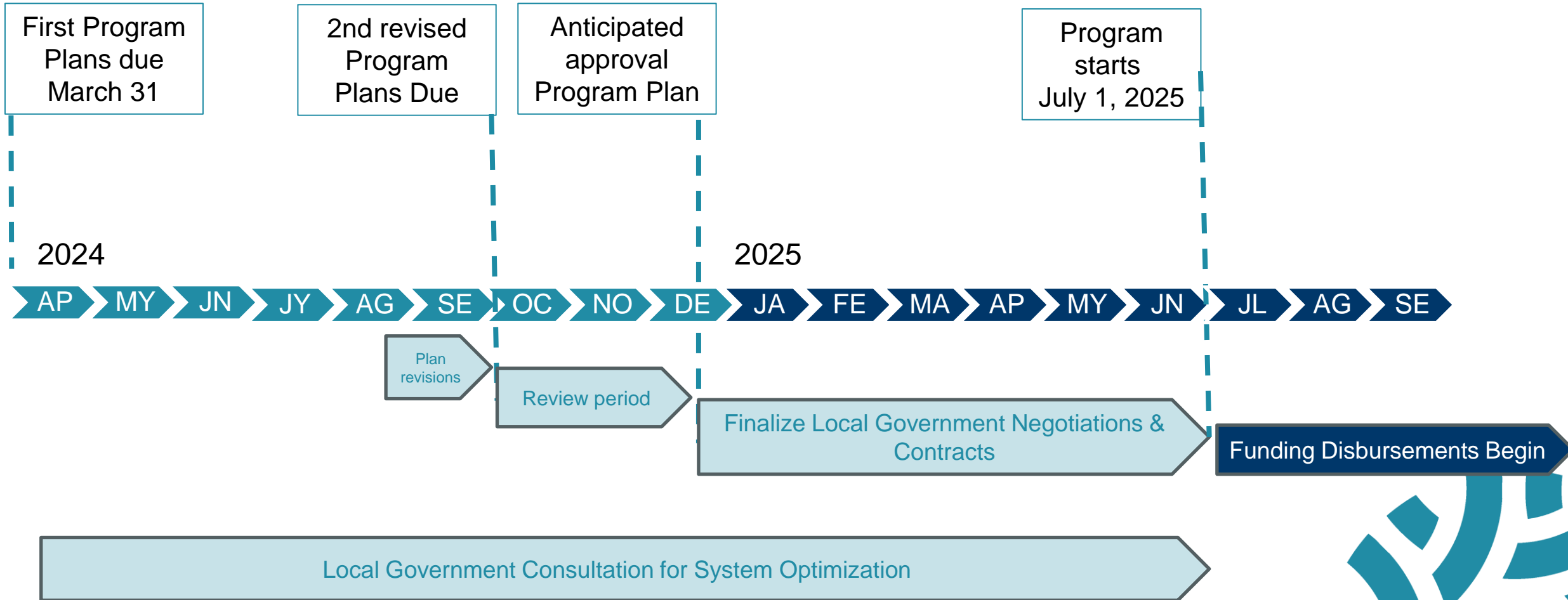
Dan Leif



Objectives

- RMA requires extensive cooperation between PROs, local governments and service providers to design and implement various recycling Program elements.
- CAA wants to partner with and work extensively with local governments and Oregon recycling participants to develop Program Plan proposals for implementation of RMA elements that:
 - Build on the strength of existing Oregon recycling services; and
 - Ensure proposals are addressing local needs and informed by in-state expertise.
- Need to align on the right processes to address RMA challenges and develop made-in-Oregon approach to achieving recycling improvements and outcomes anticipated by the statute.

Timelines



CAA Program Plan Development Process

- CAA Project Team has divided its Program Plan proposals into a number interrelated areas, including:
 - Local Government Needs Assessment and Compensation Programs;
 - Design of collection system for PRO Acceptance List Materials;
 - Education and Outreach Program;
 - Responsible End Markets; and
 - Materials Management Recommendations
 - Budget and producer fee schedule
- CAA needs a better understanding of existing services, material flows and program practices to develop Program Plan proposals.



**Circular
Action
Alliance**

Oregon Recycling System Optimization Project

Recycling System Optimization

- Initial PRO Plans require:
 - Schedule for implementing collection program expansions and improvements;
 - Methods for determining funding or reimbursement amounts;
 - Initial estimate of the total amount of funds that will be made available to local governments each year.
- Given preliminary nature of initial NA results – initial cost estimates included in PRO program plan will include a significant range.
- Recycling System Optimization effort will begin after initial PRO program plans are submitted (after March 31, 2024):
 - DEQ anticipates outreach to all NA applicants with development of more detailed schedule to fund eligible costs.



Local Government Needs Assessment Challenges

The first Needs Assessment was conducted before the Accepted Material List were developed. Meaning stakeholders were not able to meaningfully identify needs.

The timing and approach created some inherent limitations, so CAA will need to more deeply explore system expansion needs in this next phase, that will:

- Reconcile the proposed rule concept priorities with county and city requests
- Coordination of city and county requests within counties
- Geographic considerations in scheduling system expansion requests (equity between regions)
- Process for incorporating both local government and related service provider feedback

CAA will also need to ensure the funding requests and investments are “right-sized” to the anticipated volumes in the system.



System Optimization Goals

To overcome some of the limitations of the first Needs Assessment, the second effort will:

- Take a watershed approach to the discussions with local governments, considering where broader system efficiencies can be achieved on that scale,
- Understand unique conditions that may exist in each jurisdiction,
- Confirm the current infrastructure in place,
- Identify current gaps and the associated need to determine funding prioritization set forth by DEQ,
- Confirm which permitted facilities and existing LG facilities would like to participate in the PRO depot network

CAA will develop a schedule for the processing of claims over a two- and a half-year period. The final funding amounts will be determined after we complete detailed county-by-county negotiations, which will take place as per the schedule in the second plan.



Understanding existing system

CAA will effectively ask communities to detail the current system so a gaps analysis can be performed.

- Need to understand how the RMA will impact addition/removal of product categories.
- Detail the current mix of single-family/residential and commercial
 - Number of customers served on route
 - Description of on-route collection services
 - Percentage of the customers self hauling
- Inventory the current equipment used for recyclables at the reload facility?
- Identify any under-utilized capacity that may exist at reload facilities
- Map current material flows in the system



Tools to prepare for engagement on System Optimization

- CAA is developing a list of materials to help local governments and their service providers gather information in preparation of making their specific needs requests. Tools include:
 - Background information on the RMA and guidance on estimating needs and eligible expenses
 - On-route collection assessment
 - Depot collection assessment
 - Reload facility assessment
 - Transportation reimbursement considerations
- Documents will be made available on the CAA website. Local governments and their service providers will be able to access these documents and work through them at their leisure with their partners.
- CAA aims to have these resources available by mid-April.



Planning for the future RMA system: On-route

The System Expansion Project will explore RMA impacts to curbside collection.

- Given the impacts the RMA will have on collections, estimate projections of volume increases through collection on-route Consider the additional equipment that will be necessary to handle those new volumes on-route, including:
 - Trucks
 - Collection containers, roll carts, or both
 - On-board contamination monitoring equipment and software
 - New program promotional literature
 - The process of hiring and training staff
 - Staff safety equipment
- Map materials flows from the curb to the CRPF, or direct to glass end market



Definitions: Depots and reload facilities

RMA defines both Depots and Reload facilities:

- “Recycling depot” means a location where recyclable materials are accepted from the public or commercial businesses and transported to a location for consolidation, processing or to an end market.
- “Recycling reload facility” means a facility other than a recycling depot where recyclable materials are received, consolidated and made ready for transport to another location for processing or to a responsible end market.
- Recycling depots need to be designated or authorized by a local government as a part of the recycling program operated by the local government or its service provider.

(A) For on-route programs, start-up costs, including but not limited to trucks, containers, promotional literature and, if necessary and none other is available, a recycling reload facility for reloading recyclables, including any compaction equipment necessary for the recycling reload facility;



Planning for the Future RMA system – depots and reload facilities

- How many depots and reload facilities will be collecting USCL materials? Consider additional equipment needed:
 - Collection containers
 - Signage
 - On-site monitoring equipment
 - Equipment to move, compact, bale and load recyclables for shipment
 - Hiring and training staff
 - Staff safety equipment
 - Operational costs
- Are new depots or reload facilities needed?
- Estimated quantity of materials currently collected at depots
- Map the flow of source-separated depot materials to CRPF or End Market



Planning for the Future RMA system – depots and reload facilities

Considerations beyond system expansion for USCL materials

- Are sites capable of, and willing to collect PRO materials?
- Understand the current materials collection categories at depots and reload facilities and determine how PRO materials can most efficiently be added.
- For reload facilities, is there interest in the PRO Voluntary transportation option?
- For reload facilities, begin to consider what portion of the current equipment and staff time is dedicated to receipt and preparation of USCL materials.
- Are there current HHW collections, either permanent or periodic events throughout the year?
- Are depots or reload facilities capable of supporting an EPS densification unit?



PRO collection sort categories



Prioritizing investments

Recognizing that CAA will need to prioritize investments according to statutory requirements and DEQ rules, and to optimize efficiencies throughout each watershed and the state, think about how you might prioritize your own system expansion needs:

Timeline	Investments	Location
July 1, 2025		
2026		
2027		

CAA will be proposing an investment schedule in the second program plan due to DEQ in September, and developing the process for funding requests and disbursement.



**Circular
Action
Alliance**

Managing funding and reimbursements

Transportation Reimbursement: 340-090-0780

Rule Requirements:

- PRO Program Plan must include methods for calculating transportation costs.
- Payment methods may include rate schedules or zonal maps with periodic adjustments for fuel prices or other variable factors. [CAA is proposing a mileage rate.](#)
- Consultation with local governments and service providers required on payment methods.
- Methods must include a voluntary option where PRO and local government/service provider may agree to transfer some or all transportation responsibilities to PRO.



Contamination reduction reimbursement

Statute provides the PRO shall make available funding or reimbursement of up to \$3 per capita, per year for contamination reduction programming.

- What are the contamination reduction activities a local government will undertake through the year?
- Will the local government undertake that activity themselves, or rely on a partner?
- What are the estimated per capita costs of those activities?
- How will those contamination reduction activities be separate, or not, from other OTR education obligations for reduction and reuse?



Funding elections and designations

With OTR and RMA there are four designations local governments need to consider:

- Service expansions (Needs assessment) (County or hauler)
- Contamination Reduction funding (County or hauler)
- Transportation reimbursement (hauler)
- Roll carts (hauler)

DEQ will manage designations through OTR process.

Note, for the transportation reimbursement a city may be designation funding to a hauler that they have no current contractual relationship with.

Funding approach:

- Is funding needed up front from the PRO for infrastructure investments or other activities? Or can they be reimbursed?
- Need to understand the funding approach for the municipal budget cycle.





Circular
Action
Alliance

Broader RMA considerations

Education and Outreach (E&O)

Need to consider how PRO education and outreach materials may integrate into current E&O efforts.

- What are the current communication channels for E&O?
- What are the language translations needed in your jurisdiction?
- How can E&O be improved?
- What would be the most useful support the PRO can offer the current communications efforts to business and residents to promote recycling?
- Our team will be conducting further consultation on E&O materials throughout 2024.



Actions for local governments:

- 1.) Identify the stakeholders that need to be part of your system optimization discussion.**
- 2.) Be on the lookout for an email to your DEQ point of contact in mid-April alerting you the newly available resources.**
- 3.) Work with partners to gather information to identify gaps in the current system and the equipment and support that might be needed to successfully implement the RMA in your community.**
- 4.) Engage with our team when they reach out to you directly in Q2.**

We look forward to working with you!



Questions for stakeholders?

What additional information do you need to prepare for the needs assessment and other program elements that will shape the system?

Are there program elements of the RMA that you see as particularly challenging that you'd like to highlight for CAA?

What is the best way to keep the community in OR updated on developments?

Periodic webinars

Website with resources

Newsletter



Contact Information

Doug Mander

doug@circularaction.org

Francis Veilleux

Francis@circularaction.org

Kim Holmes

kholmes@4rsustainability.com



**Circular
Action
Alliance™**

