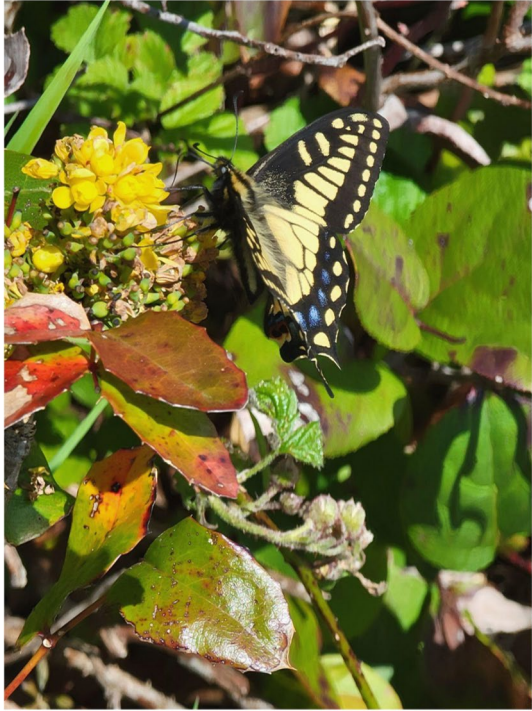


Lincoln Soil and Water Conservation District

Partners in Conservation



Discussion Map:



What is an SWCD?

District Programs:

Noxious Weeds

Water Quality Monitoring

Restoration

Questions



What is an SWCD?



The mission of the Lincoln SWCD is to improve and conserve the quality of soil, water, and other natural resources related to agricultural, forested, private, urban and rural lands in Lincoln County.

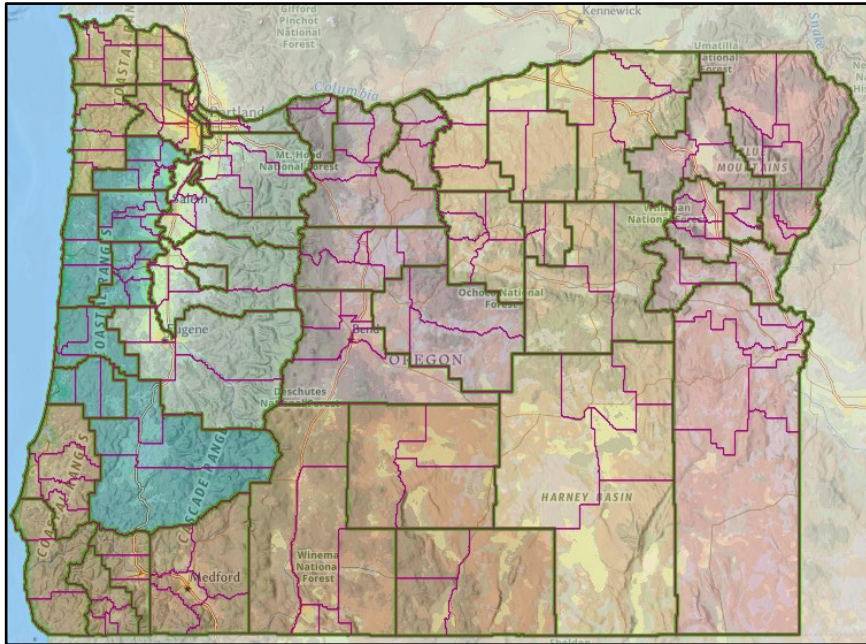


A Brief History of SWCDs

- 1935: Soil Conservation Act in response to the Dustbowl
- 1937: Franklin D. Roosevelt asked state governors to promote legislation to allow the formation of SWCDs
- 1939: Oregon passed legislation to establish Districts
- 1955: Lincoln SCD formed
- 1963: Water added to the name
- 1993: Oregon passed the Ag Water Quality Management Act and designated SWCDs as local management agencies for the implementation of area plans



SWCDs Today



- 45 active Districts in Oregon
- Base funding from Oregon Department of Agriculture to address water quality concerns from agricultural inputs
- Local priorities take precedent
- Each District is unique in their programming
- Based on the principle that the Districts belong to the farmers and local technical knowledge from the community is vital
- Based on voluntary conservation

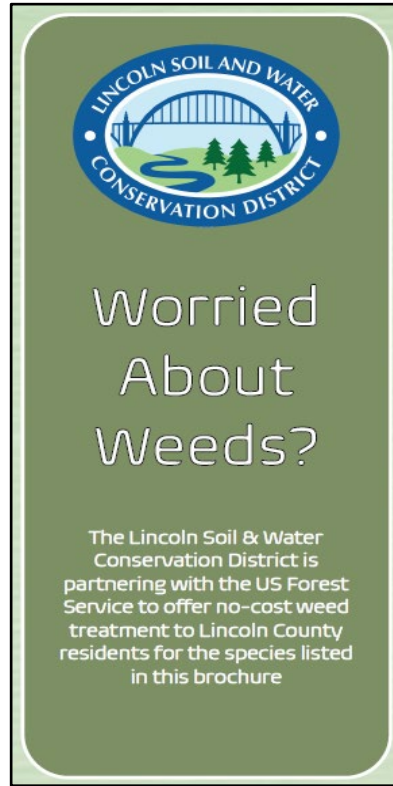


Noxious Weed Management Program



Public Lands

- Siuslaw National Forest
Good Neighbor Agreement
- Oregon Parks and Recreation
Department Noxious Weed
Control
- Cascade Pacific Resource
Conservation and
Development Alsea Weeds
Project
- Participation in the
Cooperative Weed
Management Area work
group





Private Lands

- USFS Title II Weeds Project
- Riparian restoration projects

Outreach and Engagement

- Pest Management and Water Quality Workshop Series
- Oregon Parks and Recreation Department Noxious Weed Control Surveys

		
<p>Knotweeds While leaf shape varies species to species, they all have segmented stems—often red speckled—and a zig-zag branch shape.</p> 	<p>Policeman's Helmet This plant has glossy green segmented stems and large serrated leaves which may be tinged red. Produces pink flowers June-October.</p> 	<p>Yellow Flag Iris This large iris mainly grows next to standing water or in wet ditches. Easily identified by its large yellow blooms in May through July.</p> 
		
<p>Clematis vitalba A vine whose greenish-white flowers bloom from July to September before producing fluffy, easily spread seeds.</p> 	<p>False Brome A perennial grass that grows in tuft-like bunches. The leaf blades have a nodding form and hairy edges.</p> 	<p>Lesser Celandine A very low-growing groundcover plant with a short active period between late February and May.</p> 



Water Quality Monitoring



Yachats Volunteer Temperature Monitoring

- The District's longest running monitoring project
- Temperature monitoring at 3 location from May to October (weather permitting)



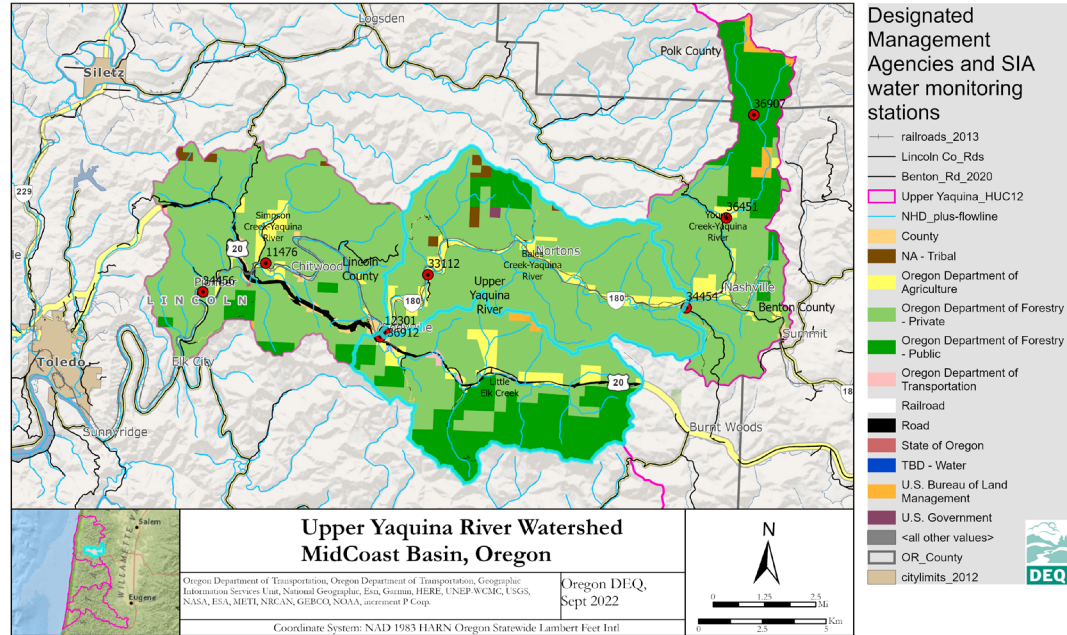
Siletz Focus Area Water Quality Monitoring

- 2 years of current funding
- Testing Total Nitrogen, Total Phosphorous, Total Suspended Solids, Turbidity, Temperature, Dissolved Oxygen, and Bacteria (E. Coli)
- 4 monitoring locations from Moonshine Park to the confluence of Rock Creek



Upper Yaquina SIA Monitoring

- 4 year plan with 2 years of current funding
- Testing Total Nitrogen, Total Phosphorous, Total Suspended Solids, Turbidity, Temperature, Dissolved Oxygen, and Bacteria (E. Coli)
- 6 monitoring stations from Chitwood up to the confluence of Little Yaquina and main Yaquina River

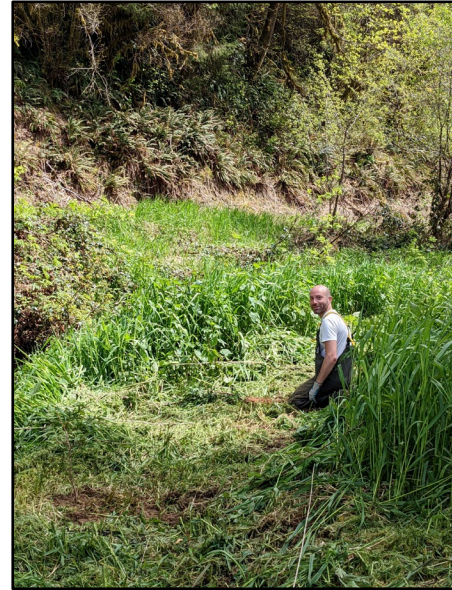


Restoration Program



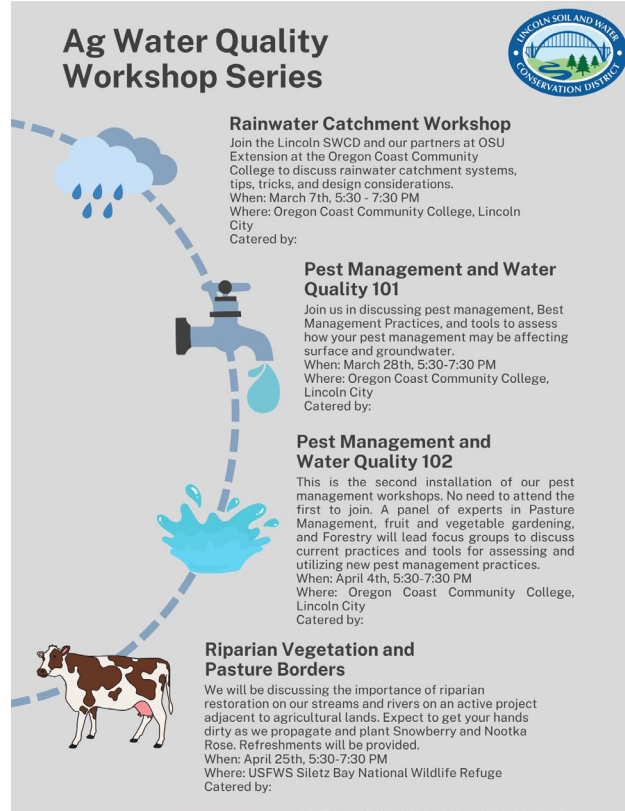
Riparian Restoration

- Serving all major basins in the County
- Focused on current and former agricultural properties to enhance water quality and habitat
- Grant funded and dependent on funders
- Primarily for rural landowners, public, and private land management agencies



Technical Assistance and Outreach

- North County Water Quality Workshop Series (Spring 2024)
- ODA Upper Yaquina SIA workshops and restoration outreach
- Private landowner site visits
- Newport public pollinator meadow restoration
- Annual native plant sale

A vertical graphic titled "Ag Water Quality Workshop Series" featuring a dashed blue line that flows from a cloud with raindrops at the top, through a water tap with a single drop, into a splash of water, and finally to a cow at the bottom. The Lincoln Soil and Water Conservation District logo is in the top right corner. The graphic contains four workshop descriptions: "Rainwater Catchment Workshop", "Pest Management and Water Quality 101", "Pest Management and Water Quality 102", and "Riparian Vegetation and Pasture Borders".

Ag Water Quality Workshop Series

Rainwater Catchment Workshop
Join the Lincoln SWCD and our partners at OSU Extension at the Oregon Coast Community College to discuss rainwater catchment systems, tips, tricks, and design considerations.
When: March 7th, 5:30 - 7:30 PM
Where: Oregon Coast Community College, Lincoln City
Catered by:

Pest Management and Water Quality 101
Join us in discussing pest management, Best Management Practices, and tools to assess how your pest management may be affecting surface and groundwater.
When: March 28th, 5:30-7:30 PM
Where: Oregon Coast Community College, Lincoln City
Catered by:

Pest Management and Water Quality 102
This is the second installation of our pest management workshops. No need to attend the first to join. A panel of experts in Pasture Management, fruit and vegetable gardening, and Forestry will lead focus groups to discuss current practices and tools for assessing and utilizing new pest management practices.
When: April 4th, 5:30-7:30 PM
Where: Oregon Coast Community College, Lincoln City
Catered by:

Riparian Vegetation and Pasture Borders
We will be discussing the importance of riparian restoration on our streams and rivers on an active project adjacent to agricultural lands. Expect to get your hands dirty as we propagate and plant Snowberry and Nootka Rose. Refreshments will be provided.
When: April 25th, 5:30-7:30 PM
Where: USFWS Siletz Bay National Wildlife Refuge
Catered by:

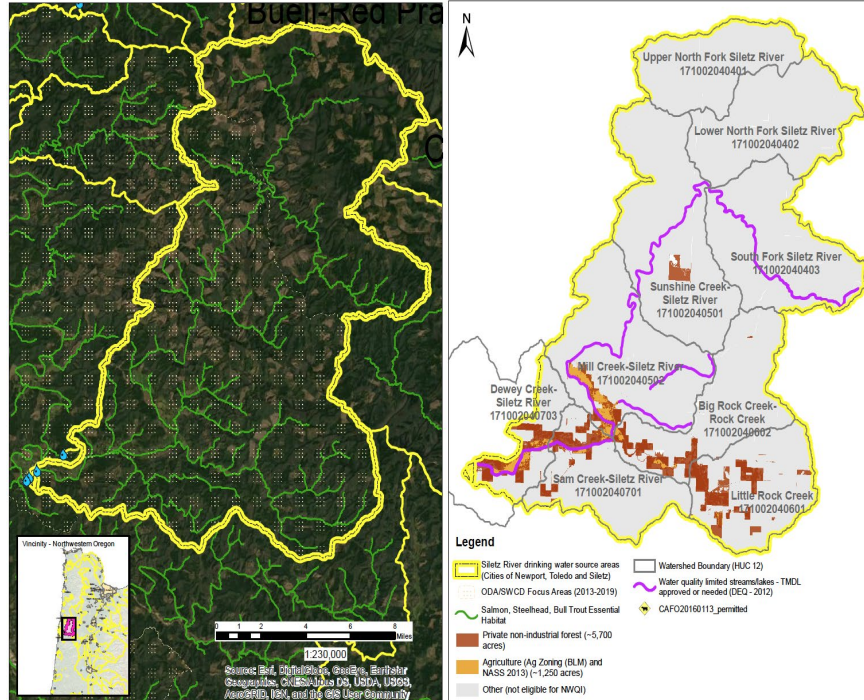


Planning and Assessments

- Toledo, Yachats, Lincoln City, and Newport Drinking Water Protection Plan
- Midcoast Water Planning Partnership technical assistance
- NRCS NWQI Source Water Assessment

Oregon potential NRCS NWQI SWP Project - Cities of Newport, Toledo and Siletz: Siletz River -Mid-Coast Basin

Susceptibility Criteria Summary: * Intense Ag landuse (crops and animals) and small woodlands/family forest in the lower portion of the watershed close to intakes; * Concerns with pesticide detections; * Previous area of concern for Harmful Algal Blooms * Lincoln SWCD Agricultural Focus Area * High soil erosion potential; * Essential Salmon Steelhead or Bull Trout Habitat; * Water Quality Limited 303(d) TMDL needed or completed for Turbidity; * High use for recreation and fishery.



Pollinator Meadow Restoration

- Serving private residents in Newport, Yachats, and Northern Lane County
- Focused on current and future flight path of Oregon Silverspot Butterfly
- Primarily for urban landowners
- Pollinator meadow restoration workshops happening this Spring in Lincoln City and Newport



Upcoming Events

Native Plant Sale

When: February 17, 2024; 10am to 1pm

Where: Lincoln SWCD Office

Rainwater Catchment Design Workshop

When: March 7, 2024; 5:30pm to 7:30pm

Where: Oregon Coast Community College Lincoln City

Water Rights and Conservation

When: March 21, 2024; 5:30pm to 7:30pm

Where: Oregon Coast Community College Newport

Pest Management and Water Quality 101 and 102

When: March 28, 2024 & April 4, 2024; 5:30pm to 7:30 pm

Where: Oregon Coast Community College Lincoln City

Riparian Vegetation and Pasture Borders Workshop

When: April 25, 2024; 5:30pm to 7:30 pm

Where: Siletz Bay National Wildlife Refuge

Pollinator Meadow Maintenance

When: May 16, 2024; 5:30pm to 7:30 pm

Where: Oregon Coast Community College Lincoln City
Demo Meadow

Creating Pollinator Habitat in Your Backyard

When: June 20, 2024; 5:30pm to 7:30 pm

Where: Oregon Coast Community College Newport



Questions?



Get in touch!

info@lincolnswcd.org

www.lincolnswcd.org

[Facebook.com/LincolnSWCD](https://www.facebook.com/LincolnSWCD)

[Instagram.com/lincolnsoilandwater/](https://www.instagram.com/lincolnsoilandwater/)



© Gary Nafis

