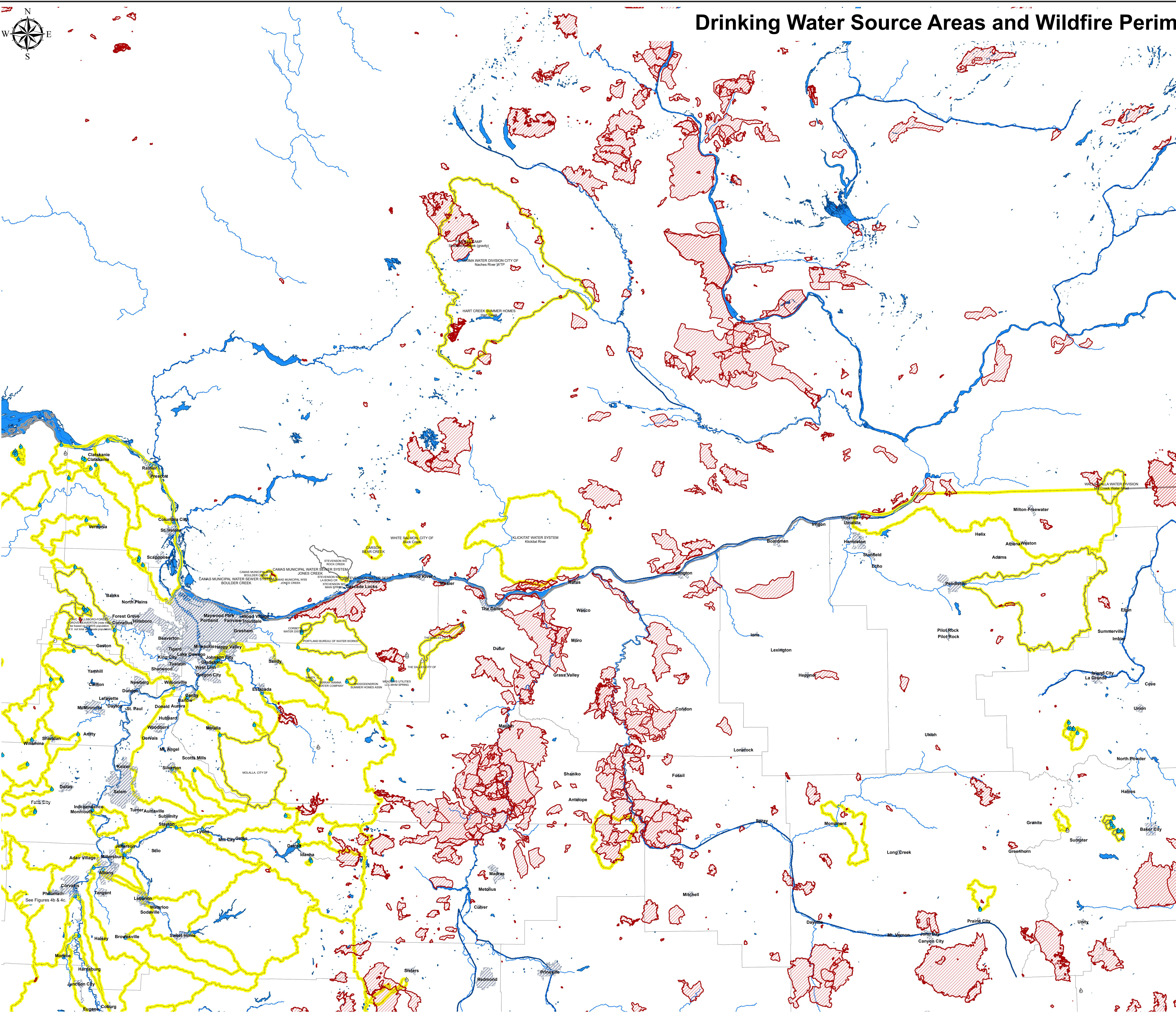
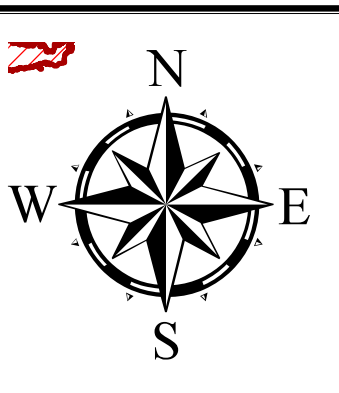


Drinking Water Source Areas and Wildfire Perimeters (2008-2018)



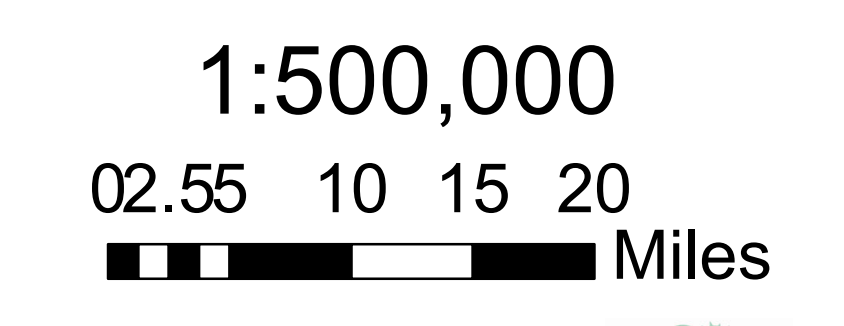
Legend

- Washington_fireperimeters_thr...
- Oregon Historical Fire Perimeters 2008 thru 2018
- US_Major_Rivers

Surface Water Intake

- Active
- Inactive/Emergency
- Proposed
- Oregon and Select Washington Drinking Water Source Area (surface water sources)
- CB_Lakes
- CB_Rivers
- CB_Rivers_fill

NOTES:
 Historic Fire Perimeters show the maximum extent recorded.
 Data source: Geospatial Multi-Agency Coordination Group (GeoMAC/Fire Perimeters)



This product is for informational purposes and may not have been prepared for, or be suitable for, legal, engineering or surveying purposes. Users of this information should review and consult the primary data and information sources to ascertain the usability of the information. DEQ's Drinking Water Protection Program can provide information on how the queries were performed. It is important to understand the limitations and qualifications of queries to ensure appropriate interpretation of this data. No warranty expressed or implied is made regarding the accuracy or utility. This disclaimer applies both to individual use of the data and aggregate use with other data.

