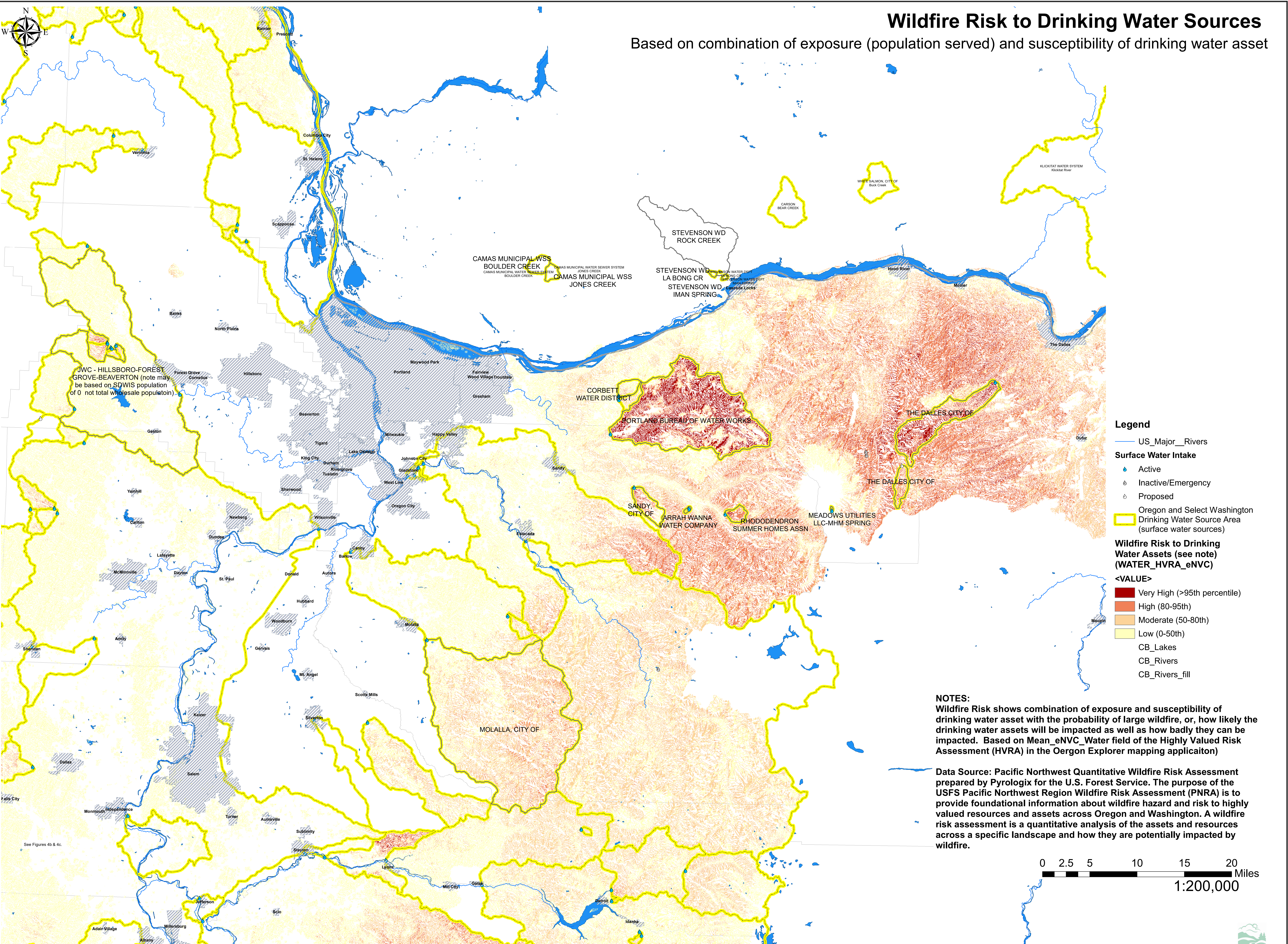


# Wildfire Risk to Drinking Water Sources

Based on combination of exposure (population served) and susceptibility of drinking water asset

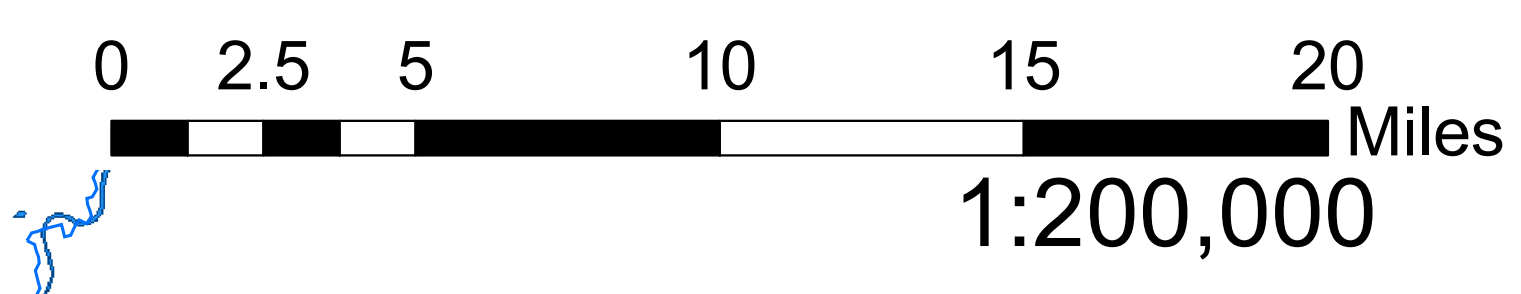


**Legend**

- US\_Major\_Rivers
- Surface Water Intake**
  - Active
  - Inactive/Emergency
  - Proposed
- Oregon and Select Washington Drinking Water Source Area (surface water sources)
- Wildfire Risk to Drinking Water Assets (see note) (WATER\_HVRA\_eNVC)**
- <VALUE>**
  - Very High (>95th percentile)
  - High (80-95th)
  - Moderate (50-80th)
  - Low (0-50th)
- CB\_Lakes
- CB\_Rivers
- CB\_Rivers\_fill

**NOTES:**  
 Wildfire Risk shows combination of exposure and susceptibility of drinking water asset with the probability of large wildfire, or, how likely the drinking water assets will be impacted as well as how badly they can be impacted. Based on Mean\_eNVC\_Water field of the Highly Valued Risk Assessment (HVRA) in the Oregon Explorer mapping application)

**Data Source:** Pacific Northwest Quantitative Wildfire Risk Assessment prepared by Pyrologix for the U.S. Forest Service. The purpose of the USFS Pacific Northwest Region Wildfire Risk Assessment (PNRA) is to provide foundational information about wildfire hazard and risk to highly valued resources and assets across Oregon and Washington. A wildfire risk assessment is a quantitative analysis of the assets and resources across a specific landscape and how they are potentially impacted by wildfire.



This product is for informational purposes and may not have been prepared for, or be suitable for, legal, engineering or surveying purposes. Users of this information should review and consult the primary data and information sources to ascertain the usability of the information. DEQ's Drinking Water Protection Program can provide information on how the queries were performed. It is important to understand the limitations and qualifications of queries to ensure appropriate interpretation of this data. No warranty expressed or implied is made regarding the accuracy or utility. This disclaimer applies both to individual use of the data and aggregate use with other data.

