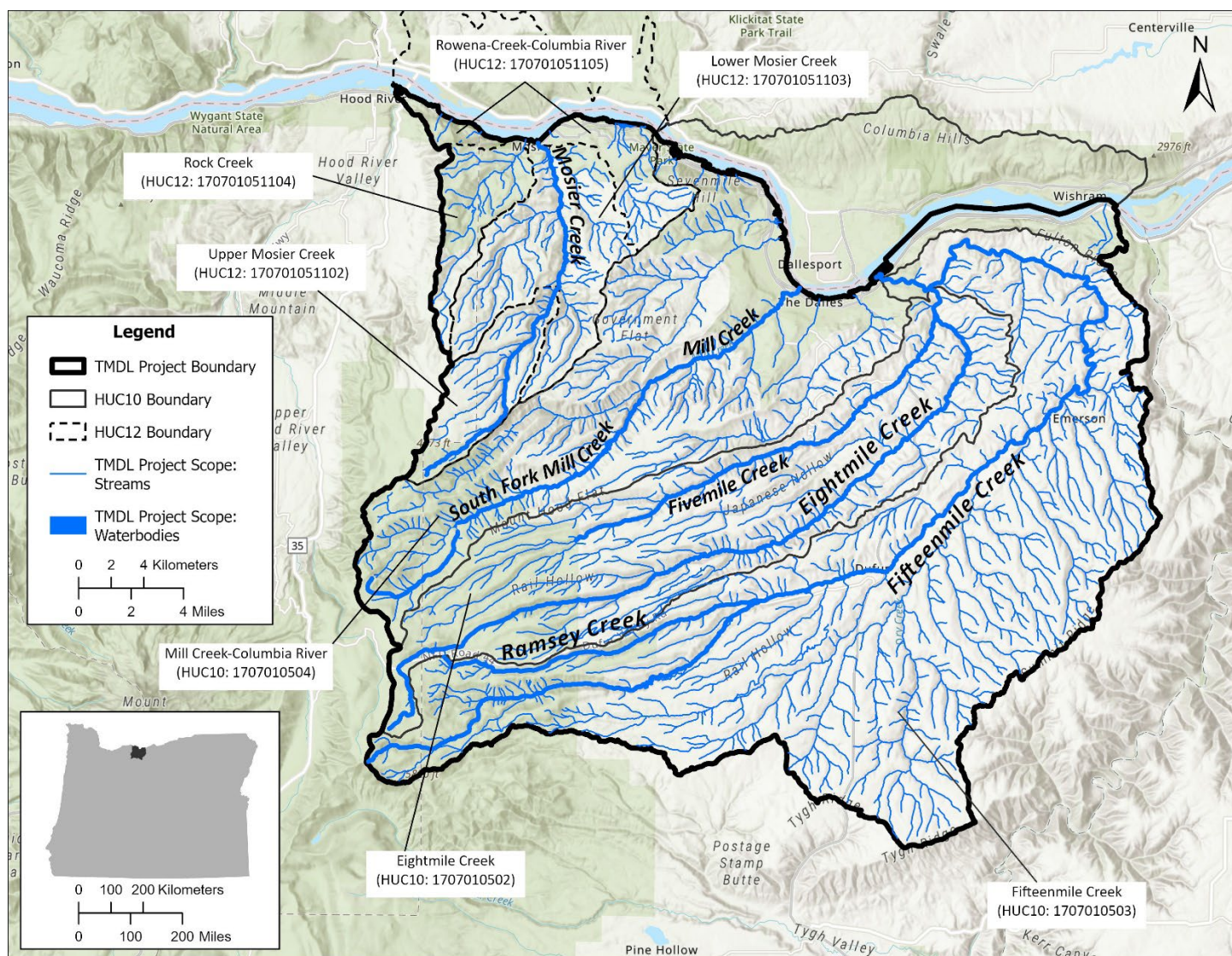


Total Maximum Daily Loads for the Middle Columbia-Hood (Miles Creeks) Subbasin Project Map

The project will include all surface waters that flow to the Columbia River within the central portion of the Middle Columbia-Hood Subbasin, also sometimes known as the Miles Creeks area. The specific watersheds include Eightmile Creek Watershed, Fifteenmile Creek Watershed, Mill Creek-Columbia River Watershed, and four subwatersheds within the Mosier Creek-Columbia River Watershed. These subwatersheds include Upper Mosier Creek Subwatershed, Lower Mosier Creek Subwatershed, Rock Creek Subwatershed, and Rowena Creek-Columbia River Subwatershed. The Columbia River and waters in the State of Washington are not included in the project area.



Non-discrimination statement

DEQ does not discriminate on the basis of race, color, national origin, disability, age, sex, religion, sexual orientation, gender identity, or marital status in the administration of its programs and activities. Visit DEQ's [Civil Rights and Environmental Justice page](#).