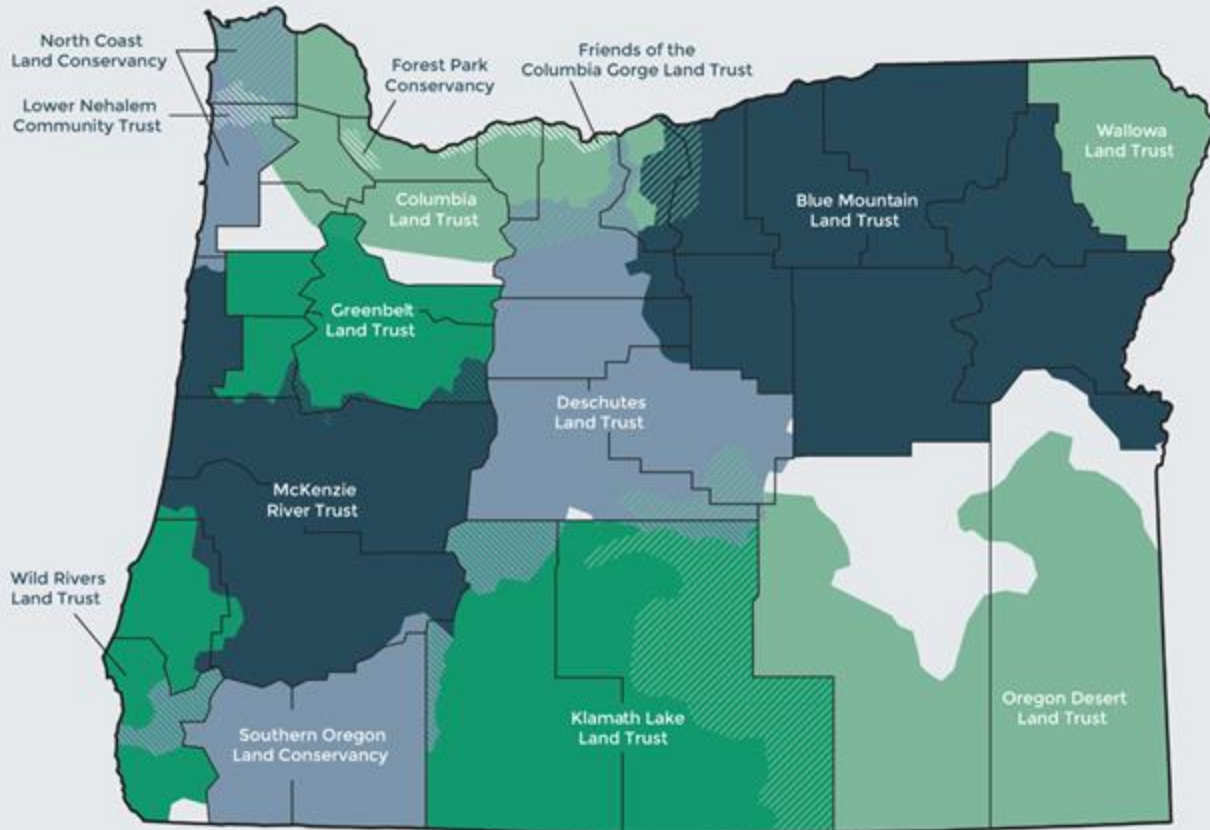




**LAND CONSERVATION
& DRINKING WATER**



Legend
 Overlapping Service Areas

REGIONAL WORK

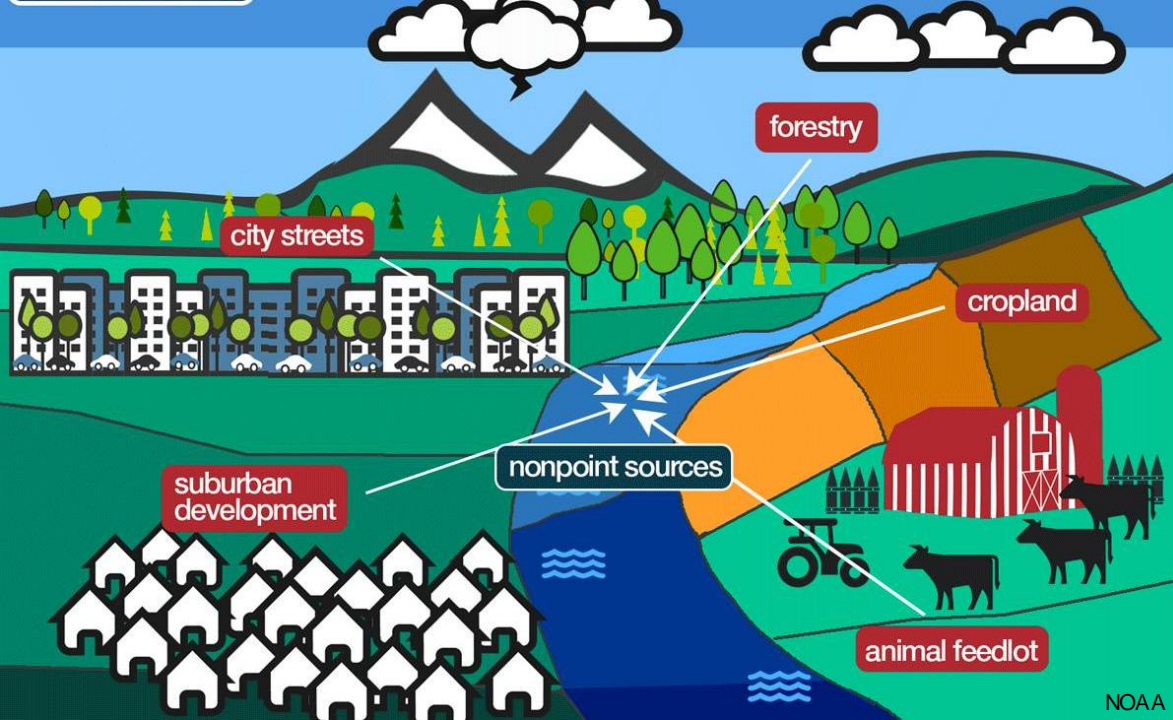
- Blue Mountain Land Trust
- Columbia Land Trust
- Deschutes Land Trust
- Friends of the Columbia Gorge Land Trust
- Forest Park Conservancy
- Greenbelt Land Trust
- Klamath Lake Land Trust
- Lower Nehalem Community Trust
- McKenzie River Trust
- North Coast Land Conservancy
- Oregon Desert Land Trust
- Southern Oregon Land Conservancy
- Wallowa Land Trust
- Wild Rivers Land Trust

STATEWIDE WORK

- Center for Natural Lands Management
- Ducks Unlimited
- Pacific Forest Trust
- The Conservation Fund
- The Nature Conservancy in Oregon
- The Trust for Public Land
- The Wetlands Conservancy
- Western Rivers Conservancy

ASSOCIATE MEMBERS

- Black Oregon Land Trust
- Cerro Gordo Land Conservancy
- Clackamas Soil and Water Conservation District
- East Multnomah Soil and Water Conservation District
- Helvetia Community Association
- Northwest Rangeland Trust
- Oregon Agricultural Trust
- Tualatin Soil and Water Conservation District
- View the Future
- Yamhill Soil and Water Conservation District



SOURCE WATER PROTECTION: POLLUTION SOURCES

SOURCE WATER PROTECTION: TOOLS

- Education
- Partnerships
- Incentives
- Land use laws
- Restoration
- Land conservation

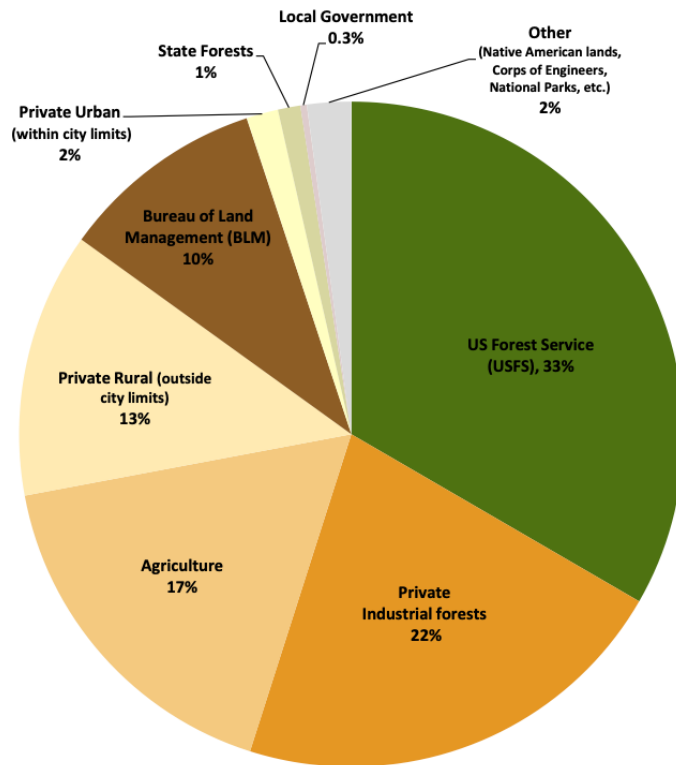


Clean Drinking Water Starts on the Land.

Land conservation is a key tool for protecting the natural lands that support our water sources.



Approximate Percentage of Land Use/Ownership within Surface Water Drinking Water Source Areas in Oregon



Drinking water source areas supplied by surface water comprise a total of 20,133 sq.mi (~20%) of Oregon.

SW DWSAs cover ~60% of Western Oregon and ~2% of Eastern Oregon

Analysis includes 167 community and non-transient non-community public water systems using surface water or classified as groundwater under the direct influence of surface water (13 - GWUDI systems).



BLOG: STORIES OF HOME

DRINKING WATER DATA FOR COASTAL COMMUNITIES



SARA LORENO

Senior Forest Research Data Scientist



Ecotrust Drinking Water Data: <https://ecotrust.org/drinking-water-data-for-coastal-communities/>

LAND CONSERVATION: TOOLS

Ownership

Benefits: Control, Flexibility

Challenges: Cost, Long-term Management

Conservation Easement

Benefits: Cost, Management

Challenges: Complexity, Enforcement

Deed Restriction

Benefits: Cost, Administration

Challenges: Impermanence

LAND CONSERVATION: MODELS

**Community
Owned**

**Partner
Owned**

**Land Trust
Owned**

**Land
Exchange**

**Bridge
Buyer**

**Community
Forest**

LAND CONSERVATION: BENEFITS

Water Supply

- Better Quality
- Reliable Quantity
- Reduced Treatment Costs
- Increased Resilience

Co-Benefits

- Climate resilience and mitigation
- Recreation and open space
- Supporting local economies
- Healthier and more equitable communities

WHO THIS GUIDE IS FOR:

- WATER PROVIDERS
- LOCAL GOVERNMENTS
- COMMUNITY MEMBERS
- LAND TRUSTS AND OTHER COMMUNITY PARTNERS

WHAT'S IN THE GUIDE:

- BACKGROUND ON HOW DRINKING WATER IS SOURCED, MANAGED, AND REGULATED
- AN EXPLANATION OF THE ROLE OF SOURCE WATER PROTECTION IN SECURING CLEAN DRINKING WATER
- AN OVERVIEW OF LAND CONSERVATION TOOLS
- AN OVERVIEW OF FUNDING SOURCES
- A FRAMEWORK FOR IMPLEMENTING LAND PROTECTION PROJECTS
- CASE STUDIES



Protecting Oregon's Drinking Water Sources

A Guide for Using Land Conservation to Secure
Clean and Reliable Drinking Water

Written by Michelle Smith, Water Program Manager at the Coalition of Oregon Land Trusts



Michelle Smith
michellesmith@
oregonlandtrusts.org