

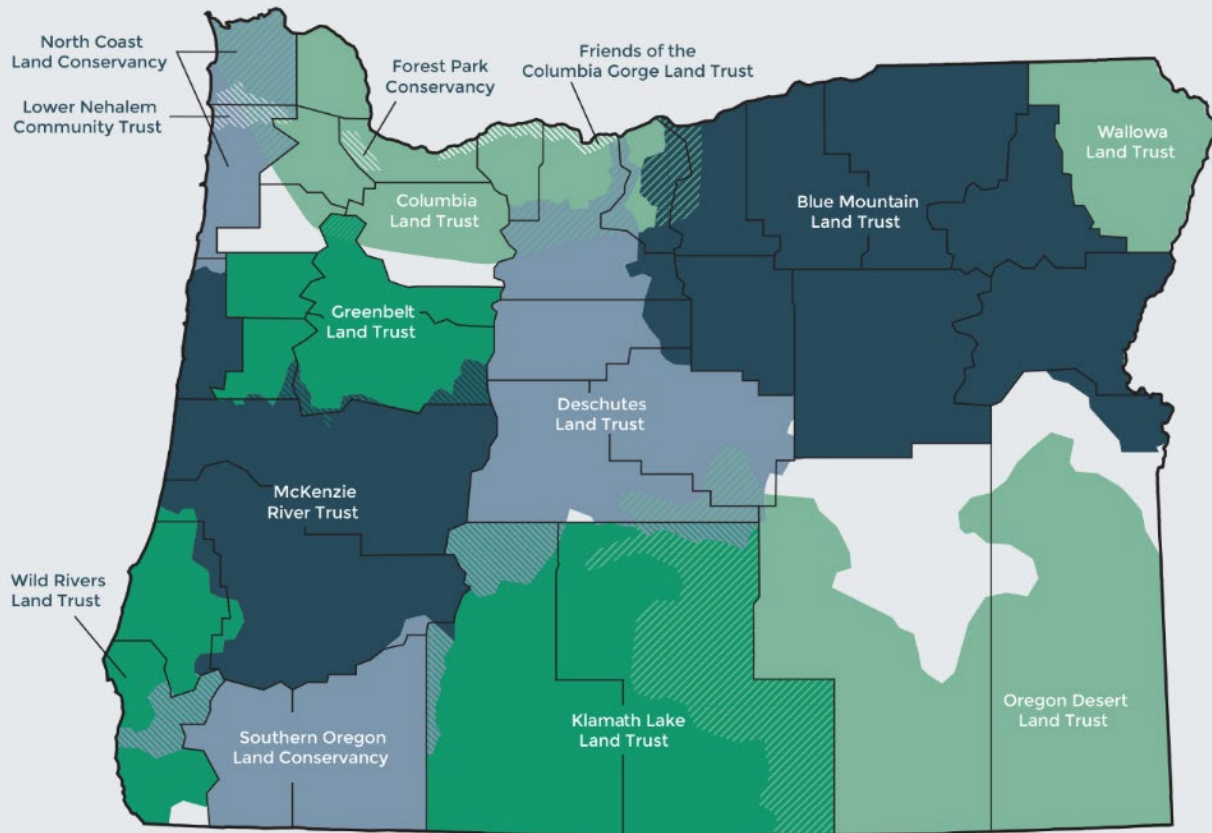


COALITION OF
OREGON
LAND TRUSTS

**LAND CONSERVATION
& DRINKING WATER**

What to Expect

- Land Trusts & COLT
- Define source water protection
- Define land conservation
- Connection between land conservation and source water protection
- Benefits of land conservation
- Parting thoughts



REGIONAL WORK

- Blue Mountain Land Trust
- Columbia Land Trust
- Deschutes Land Trust
- Friends of the Columbia Gorge Land Trust
- Forest Park Conservancy
- Greenbelt Land Trust
- Klamath Lake Land Trust
- Lower Nehalem Community Trust
- McKenzie River Trust
- North Coast Land Conservancy
- Oregon Desert Land Trust
- Southern Oregon Land Conservancy
- Wallowa Land Trust
- Wild Rivers Land Trust

STATEWIDE WORK

- Center for Natural Lands Management
- Ducks Unlimited
- Pacific Forest Trust
- The Conservation Fund
- The Nature Conservancy in Oregon
- The Trust for Public Land
- The Wetlands Conservancy
- Western Rivers Conservancy

ASSOCIATE MEMBERS

- Black Oregon Land Trust
- Cerro Gordo Land Conservancy
- Clackamas Soil and Water Conservation District
- East Multnomah Soil and Water Conservation District
- Helvetia Community Association
- Northwest Rangeland Trust
- Oregon Agricultural Trust
- Tualatin Soil and Water Conservation District
- View the Future
- Yamhill Soil and Water Conservation District



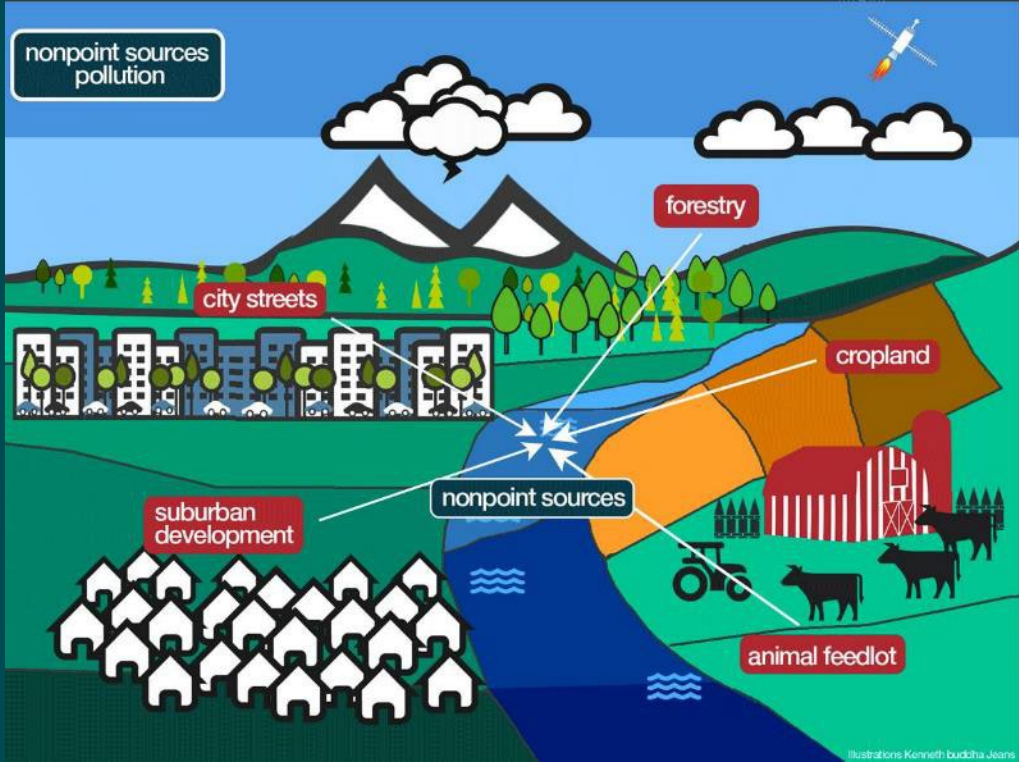
WE'RE THE COALITION OF OREGON LAND TRUSTS

**We represent more than 30 nonprofits
across Oregon—all advocating for our
natural world and the communities we
serve.**

Source Water Protection

Protecting the sources of our drinking water





Source Water Protection Tools

- Education
- Partnerships
- Incentives
- Land use laws
- Restoration
- Land conservation



Land Conservation

The use of voluntary legal tools to secure long-term protection of natural lands for their natural values and services.

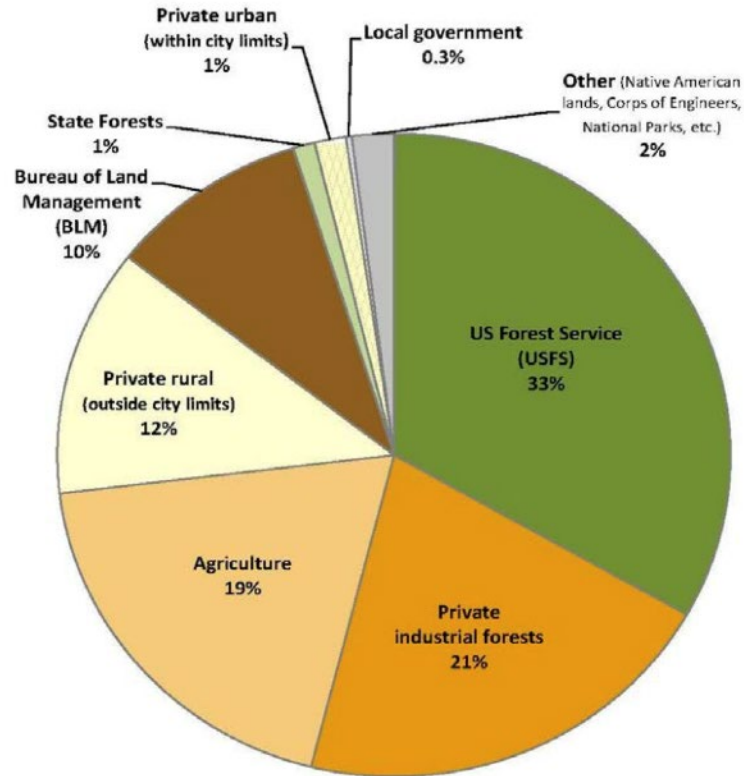


Clean Drinking Water Starts on the Land.

Land conservation is a key tool for protecting the natural lands that support our water sources.



Approximate Percentage of Land Use/Ownership within Surface Water Drinking Water Source Areas in Oregon



Drinking water source areas supplied by surface water comprise a total of 20,468 sq.mi (~20%) of Oregon.

SW DWSAs cover ~60% of Western Oregon and ~2% of Eastern Oregon

Analysis includes 160 community and non-transient non-community public water systems using surface water or classified as groundwater under the direct influence of surface water (13 - GWUDI systems).

Land Conservation Benefits

Water Supply

- Better Quality
- Reliable Quantity
- Reduced Treatment Costs
- Increased Resilience

Co-Benefits

- Climate resilience and mitigation
- Recreation and open space
- Supporting local economies
- Healthier and more equitable communities

Parting Thoughts

- Opportunities
- Information
- Capacity
- Partnerships





Michelle Smith
michellesmith@
oregonlandtrusts.org