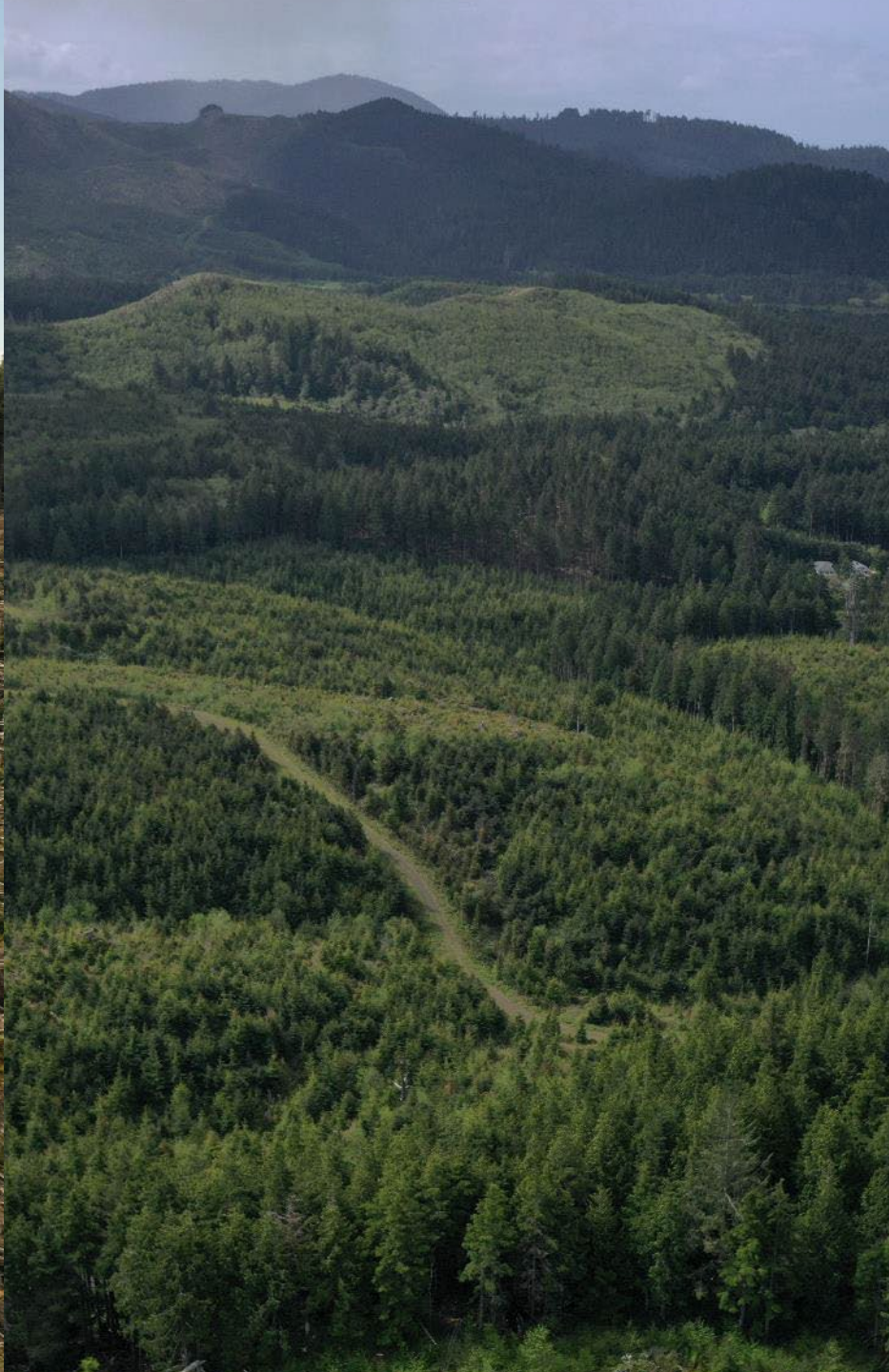


SO- YOU BOUGHT A WATERSHED





3 STEPS

Planning

Restoration

Stewardship

PLANNING

1. What do you have? (inventory)
2. What do you want? (value setting / stakeholder identification)
3. Legal requirements
4. Achievability (finances)

Strategic

Big Picture

Projective

Aspirational

Technical

Science Based

"Sideboards"

Localized

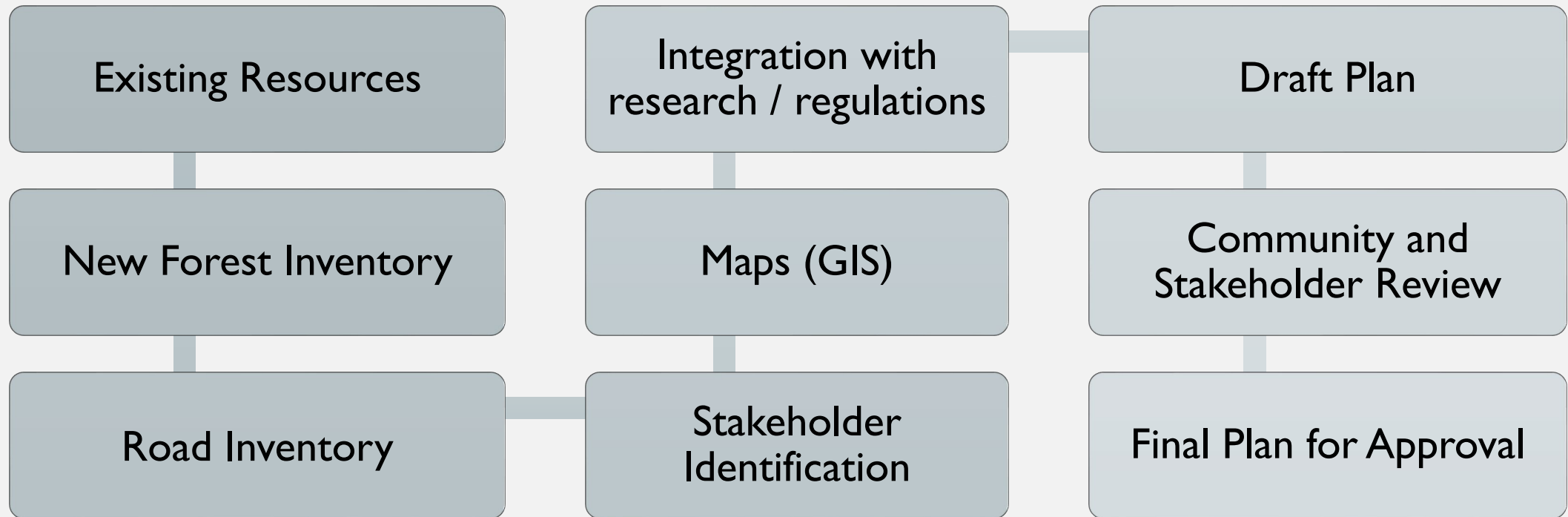
Operational

Fixed Goals

Property-scale

Outcome based

PLANNING WORKFLOW



RESTORATION

- Deferred stewardship - eg catching up
- Active management to provide a better “filter”
- Significant range of costs

Roadway Issues / Improvements

Stream Restoration

Resilience

Forest Composition

Gray Infrastructure

STEWARDSHIP

“Reliable quantities of
high quality water”

- Long-term
- Focused on resilience + risk
- Includes costs and revenues
- Two components:
 - Baseline sediment and turbidity
 - Catastrophic event risk

TWO EXAMPLES:

1. Roadway contributes baseline sediment from traffic, resulting in turbidity & increased treatment cost.
2. A culvert slowly fails over many years, eventually it plugs up and washes 45 cubic yards of fill into the stream / watershed.

SO, WHAT DO YOU* DO?

1. Catalog and document existing resources
 1. Appraisal
 2. Forest / road inventory
 3. Sourcewater Protection Plans / other planning docs.
2. Create a management and operational plan
3. Fundraise / Contract Forestry
4. Long-term stewardship

*you do not need to be the expert or do all of this

PARTNERS

1. Involve early
2. Verify experience with sourcewater
3. Integrate into operations

- DEQ / EPA
- Business Oregon
- Your local Land Trust!
- Local watershed councils
- Oregon Dept. of Forestry
- Forest Stewards Guild
- Sustainable Northwest
- Coalition of Oregon Land Trusts
- The Nature Conservancy
- The Conservation Fund
- Society of American Foresters

QUESTIONS

Ben Hayes

www.springboardforestry.com

ben@springboardforestry.com

971-678-9464