

Everybody Drinks!

Funding Opportunities with Drinking Water Providers

Julie Harvey

**Oregon DEQ Drinking Water Protection Program,
Watershed Management**

April 28, 2021

Protecting Drinking Water Sources from Cyano-HAB Impacts in the Willamette Basin

Drinking Water Source Protection Grants/Loans

DW Source Protection Fund ~\$200,000 / year total

- Grants: Up to \$30,000 per public water system to reduce risk in source area - no match required
- Loans: Up to \$100,000 per project, low interest. i.e. land acquisition or incentive based protection measures

Purpose: To reduce risk risks within the drinking water source area



State of Oregon
Department of
Environmental
Quality



DW Source Protection Fund – Overview

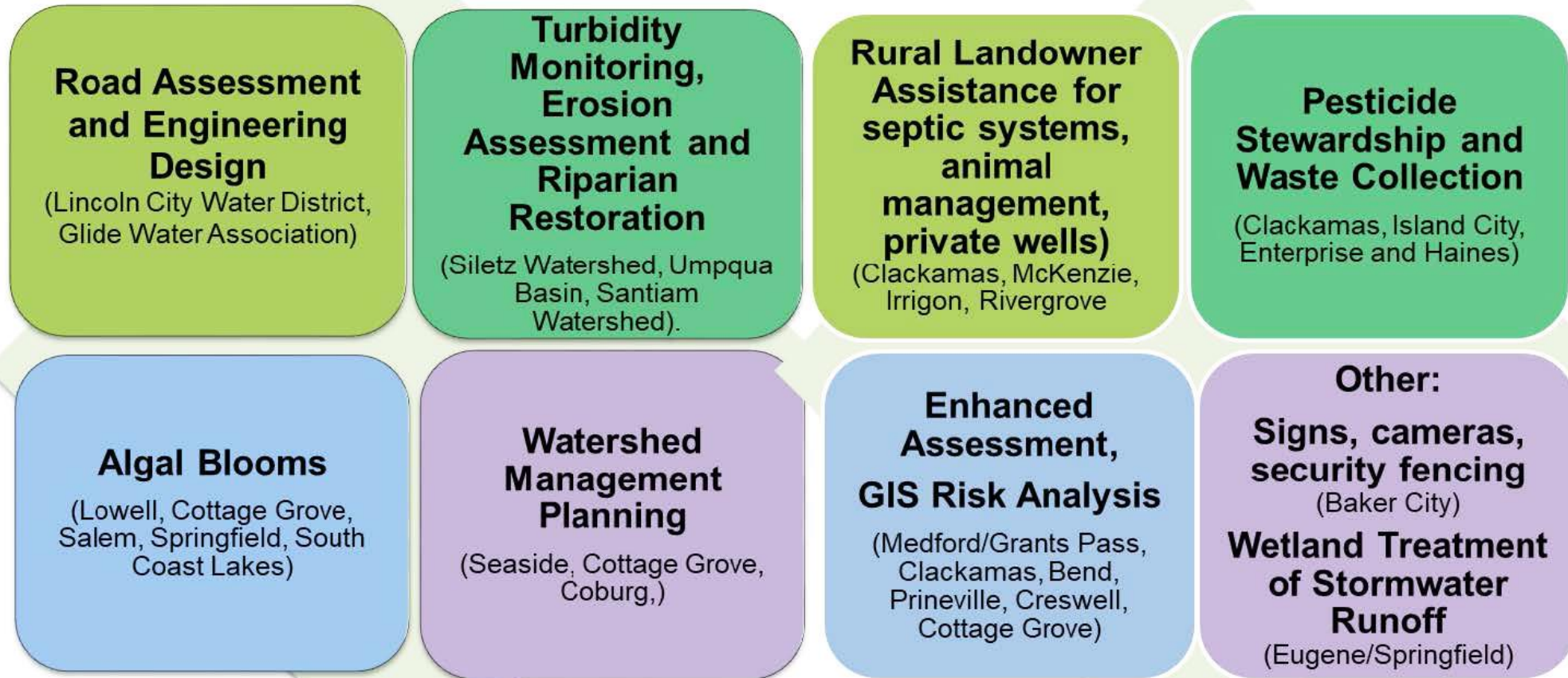
Public Water System must apply

- Community and Nonprofit Non-Community water systems
- Must have completed Source Water Assessment
- Can only receive in two consecutive years

- ✓ Accept Letters of Interest January through March
- ✓ Awarded projects must spend money within 2 years to avoid forfeiture
- ✓ Water systems can collaborate on a regional (joint) project and combine funds
- ✓ Emergency grants for source water threats that arise outside the LOI submission deadline.

- ✓ Search: OHA Drinking Water Source Protection
<https://www.oregon.gov/oha/PH/HEALTHYENVIRONMENTS/DRINKINGWATER/SRF/Pages/spf.aspx>

Drinking Water SPF – Project Types



Note: Land purchase funded only via low interest loans

The Dalles 2013 Government Flat Complex Fire

- ~25% of source area – lower watershed burned
- \$30,000 DW SPF Emergency Grant for aerial grass seeding of 100 high-priority acres
- primarily for grass seed – other partners and the City of Dalles funded other restoration too



Schooner Creek Sediment Reduction

- Reduce sediment above the Lincoln City municipal water intake through road drainage and surface improvements, and road segment stabilization.
- Partners
 - ✓ Salmon Drift Creek Watershed Council
 - ✓ Lincoln City (PWS)
 - ✓ Lincoln County Public Works
 - ✓ Siuslaw National Forest
- Multiple years of funding by DWPP and DW SPF



Photos: Salmon Drift Creek Watershed Council

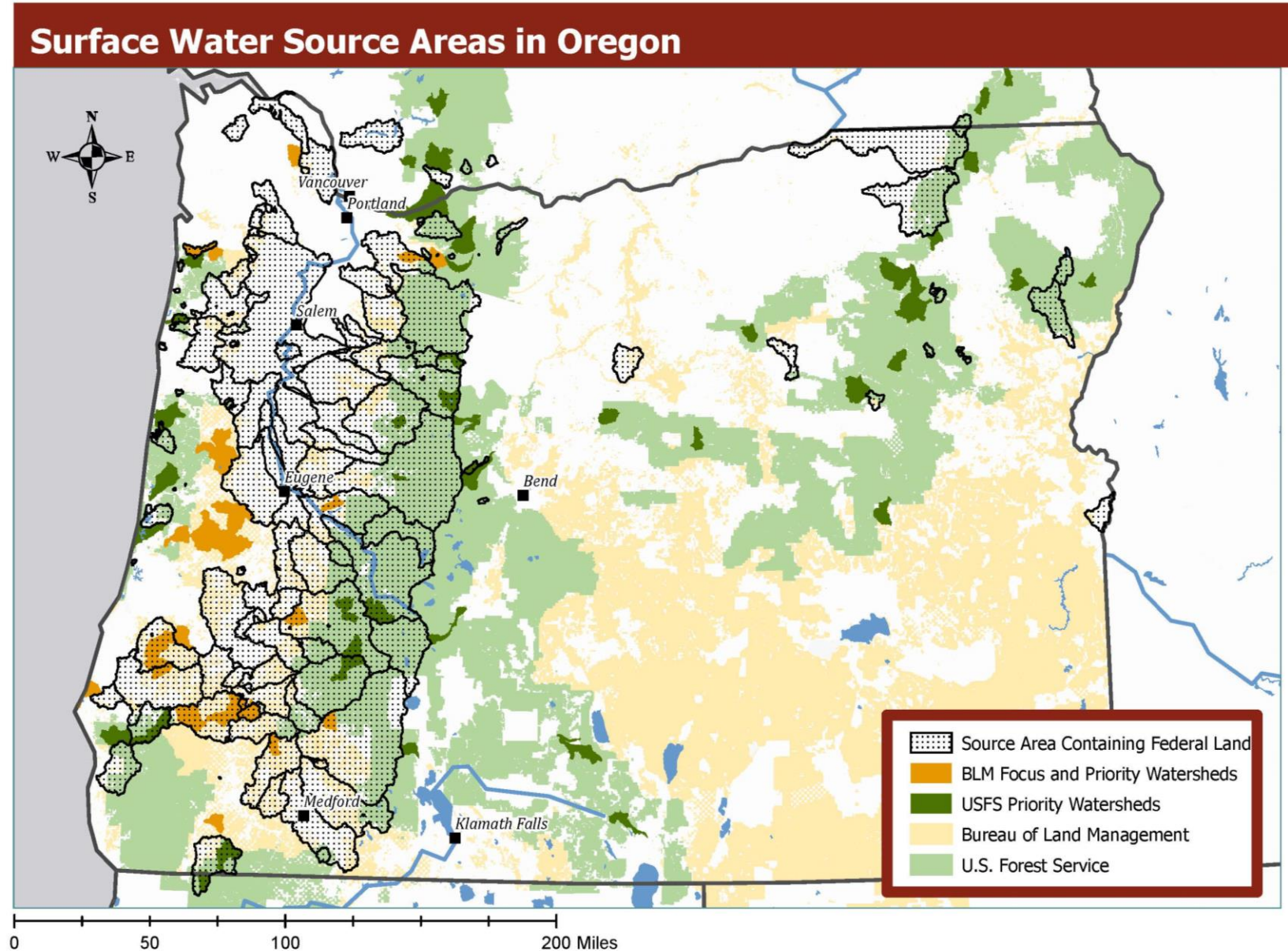
Drinking Water Providers Partnership



- Public and private organizations pooling funds to improve health of drinking water watersheds and aquatic life benefit
- Supports local partnerships between downstream drinking water providers and upstream landowners and restoration practitioners.

Drinking Water Providers Partnership

- Must be a drinking water source area with a federal (USFS/BLM) nexus
- Multiple types of eligible applicants
 - Tribal, local, state, or federal governments, educational institutions, public water systems, non-profit organizations, watershed councils, landowners, soil and water conservation districts



Data sources: Washington Department of Health, Oregon DEQ, BLM, USDA-FS, ESRI, Geos Institute | Date revised: 10/26/2020 | by James Edson

Drinking Water Providers Partnership

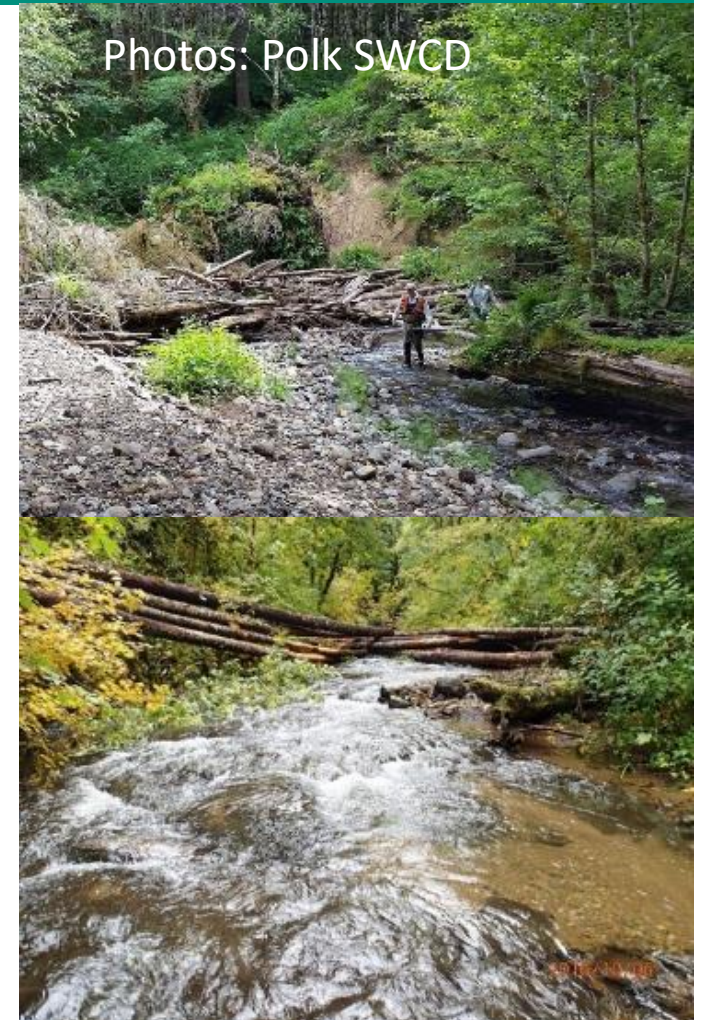


- \$400,000 to \$600,000/year available (projects up to \$50,000)
- Projects that are a good fit for Source Protection Funds are referred to state program
- Awarded projects must be completed by end of following fiscal year (for Federal Funds)
- Proposals typically due January – awards in March+

<https://www.workingwatersgeos.org/drinking-water-providers-partnership>

City of Dallas – Upper Rickreall Habitat Enhancement

- 1987 Rockhouse Creek fire lead to severe erosion and increased sediment in creek and Mercer Reservoir
 - drinking water source for City of Dallas
- DWPP funded air-lift of 522 logs for 34 new instream structures (2016)
- Meets mutual goals and objectives in drinking water watershed
 - Improves fish passage and increases woody debris to slow flows in key salmon habitat watershed
 - Significantly contributes toward cleaner and more sustainable drinking water supply downstream



City of Dallas - Upper Rickreall Creek

- Strong partners, multiple funding sources:

- ✓ Polk SWCD

- ✓ BLM

- ✓ City of Dallas

- ✓ Rickreall Watershed Council

- ✓ Hancock Forest Management

- ✓ ...and more

- Led to successful DEQ CW SRF loan for land acquisition

January 20, 2017

Oregon

CapitalPress.com 11

Earl Brown & Sons sells to Washington fruit grower

By GAIL OBERST
For the Capital Press

DALLAS, Ore. — A distant helicopter rises suddenly from a Coast Range forest above Dallas. A log dangles beneath it, hanging from a cable.

"It's a bonal!" says Lucas Hunt, project manager for the Rickreall Watershed Council and the Polk Soil and Water Conservation District. "There are two logs in that load!"

Family members remain in place at business

By GEORGE PLAVEN
EO Media Group

MILTON-FREEWATER, Ore. — Earl Brown & Sons, Oregon's largest grower and packer of fresh apples, has sold to another family-owned fruit enterprise in Wenatchee, Wash.

Members of the Fruit...

Hunt has reason to be excited. This project will help control sediment that is slowly filling Mercer Reservoir, the source of the City of Dallas' drinking water. To accomplish improvements to nearly five miles of upper Rickreall Creek, Hunt has enlisted help from nearly a dozen...

Polk Soil and Water Conservation District staff tour a helicopter log placement project on private and public forest lands that will help improve Dallas drinking water.



Gail Oberst for the Capital Press

Rickreall Creek...

...what might if streams had to bedrock the banks, the nation's State's adapted in its now regu- tersheds, but managers ments, said a map of reall wa- ter Man- agers, said "Our investors expect a certain level of stewardship in the management of their assets," she said. "This project

...for whom her company manages Forestland. To help with the project, Hancock allowed access to the creeks flowing through those lands, contributed trees to plant in streams, donated money and contributed time to review plans.

...Washington Department of Health, U.S. Environmental Protection Agency and Wild- Earth Guardians.

...All of those projects were made possible by voluntary co-operation between private land- owners, public managers and nonprofit agencies, according to Cathy Kellon of the Geos Institute. Kellon helps coordinate the Partnership, which includes the U.S. Forest Service, U.S. Bureau of Land Management, Oregon Department of Environmental Quality, Washington Department of Health, U.S. Environmental Protection Agency and Wild- Earth Guardians.

...niffer Bakke pointed to parcels of about 10 forest landowners for whom her company manages Forestland. To help with the project, Hancock allowed access to the creeks flowing through those lands, contributed trees to plant in streams, donated money and contributed time to review plans.

...Washington Department of Health, U.S. Environmental Protection Agency and Wild- Earth Guardians.

...All of those projects were made possible by voluntary co-operation between private land- owners, public managers and nonprofit agencies, according to Cathy Kellon of the Geos Institute. Kellon helps coordinate the Partnership, which includes the U.S. Forest Service, U.S. Bureau of Land Management, Oregon Department of Environmental Quality, Washington Department of Health, U.S. Environmental Protection Agency and Wild- Earth Guardians.

...niffer Bakke pointed to parcels of about 10 forest landowners for whom her company manages Forestland. To help with the project, Hancock allowed access to the creeks flowing through those lands, contributed trees to plant in streams, donated money and contributed time to review plans.

...Washington Department of Health, U.S. Environmental Protection Agency and Wild- Earth Guardians.

statesman journal Protect, keep a reliable, clean drinking water supply

Lucas Hunt Published 9:17 a.m. PT Jan. 10, 2017

Rivers and streams are the for more than one-half of all restoring and protecting the water is more important than cities are growing and, in providers must balance with more demands on

And there's a cost to k over the next 20 years billion investment in c

In the Rickreall watershed, which supplies drinking wa community groups, landowners and government age nature's ability to help provide clean drinking water.

Rickreall Creek has provided a reliable supply of dr over 100 years but the creek is often clouded with treatment challenges and has been slowly filling its useful storage life for downstream ratepayers. upper Rickreall Creek is a proven method for res and improving water quality.

(Photo: Special to the Statesman Journal)

CONNECT TWEET LINKEDIN

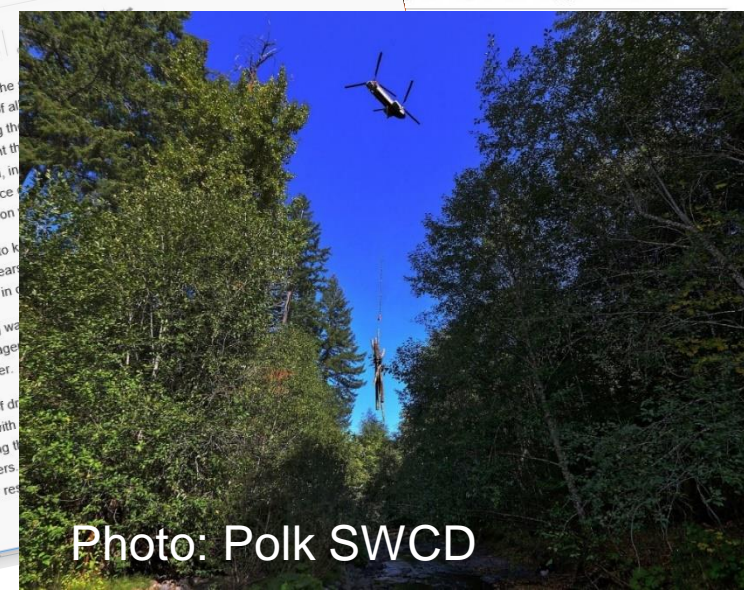


Photo: Polk SWCD



Other Potential Funding Sources

- **Watershed protection projects through Clean Water SRF**
 - Aligned with DEQ’s “Nonpoint Source Management Program Plan”
 - Sponsorship Option to combine nonpoint source control project with wastewater facility project financing - sponsored project done at no cost or substantially reduced cost due to low interest rate
 - Low interest loans available for land purchase or NPS work
 - Local Community Loan – use funds to establish a local loan fund for citizens
- **CWA Nonpoint Source Grants (\$319)**
 - Generally < \$30K and non-federal match required (40%)
 - Must address priorities in RFP – contact DEQ Basin Coordinators
- **Supplemental Environmental Projects**
 - Respondents to DEQ compliance and enforcement orders
 - SEP Option for up to 80% of monetary penalty to improve Oregon’s environment
- **Water system match contributions**

Partnering with NRCS - NWQI

- 2018 Farm Bill implemented new focus on Source Water Protection Areas - National Water Quality Initiative (NWQI)
- Funding for detailed watershed assessment and an outreach strategy to address agricultural-related impacts to source water quality.
- FY19 - FY21, National and Oregon NRCS provided Conservation Technical Assistance dollars to fund 10 Source Water Protection readiness plans.



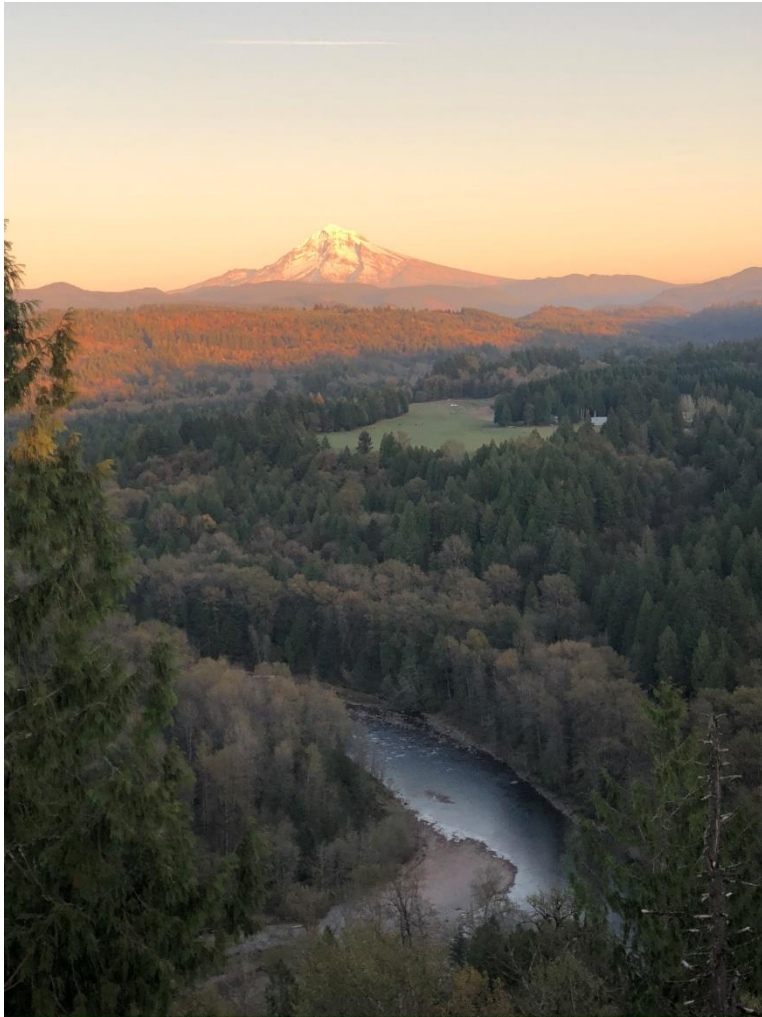
Summary

- Public health issues can leverage water quality interest and implementation
- Additional funding may be available by collaborating with drinking water providers
- DEQ can help with identifying partners, resources, and funding sources. GIS/mapping support available for communities and partners etc.



Graphic: https://sourcewatercollaborative.org/wp-content/uploads/2020/07/SWC-Infographic190924_v1a-4.pdf

Questions?



Oregon Drinking Water Protection Program

<https://www.oregon.gov/deq/wq/programs/Pages/dwp.aspx>

Julie Harvey –DEQ Program Coordinator

julie.harvey@state.or.us

Jacquie Fern - Western and Eastern Region

Tessa Edelen - Northwest and Eastern Region

Josh Seeds - Nonpoint Source Specialist

Ratna Adhar – GIS Specialist