

Port Orford Drinking Water Protection

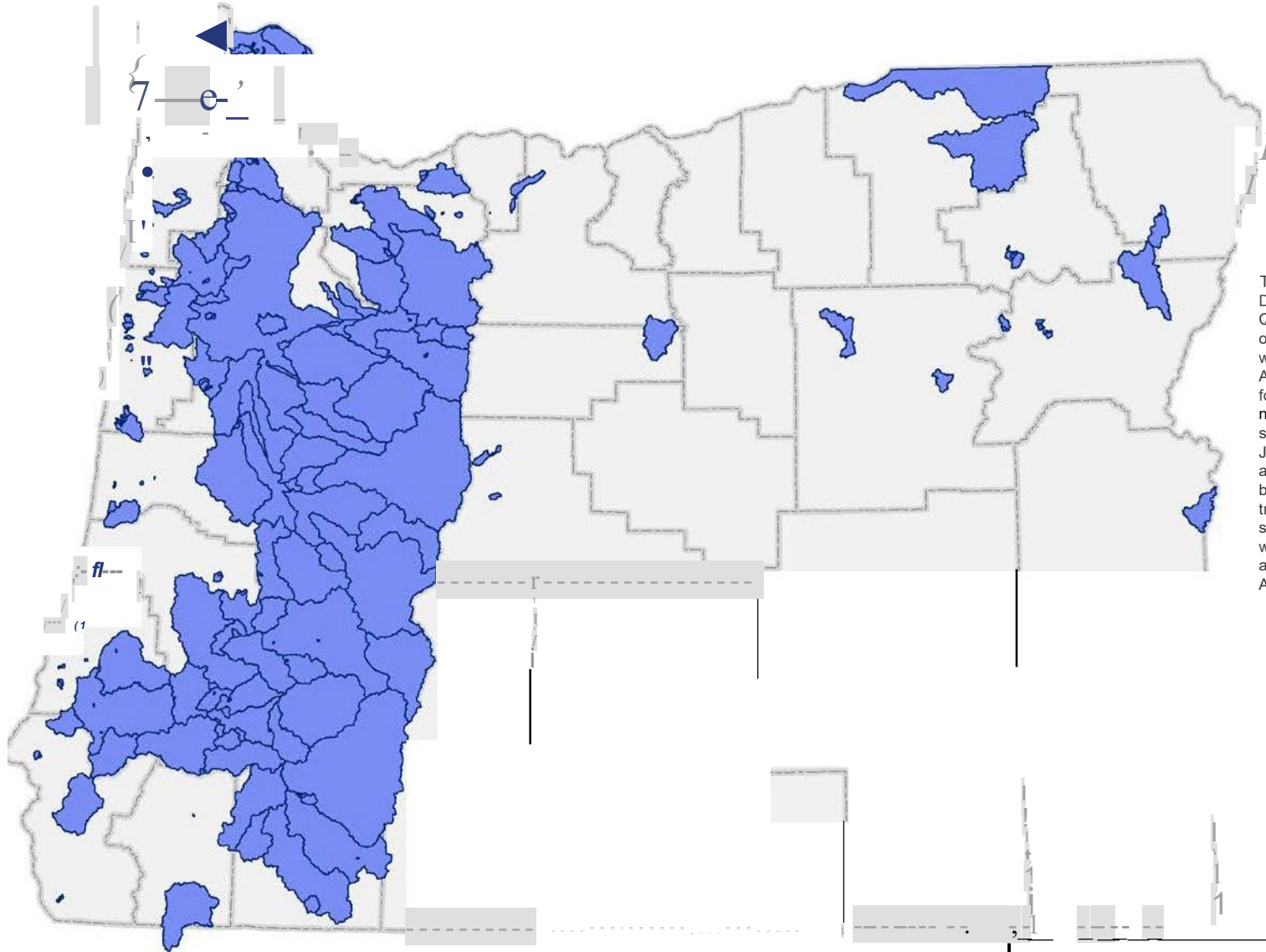
Linda Tarr, Port Orford Watershed Council
Kaola Swanson, The Conservation Fund



11/3/2022



THE
CONSERVATION FUND

Drinking Water Source Areas for Oregon Public Water Systems - Surface Water



This map includes Oregon Department of Environmental Quality and Oregon Department of Human Services' Drinking Water Program Source Water Assessment source area results for community, and non-transient non-community public water systems that were active in January 2019. Additional source areas are added as information becomes available including transient non-community water systems. Information on private water supplies was not collected as part of the Source Water Assessment project.

Legend

-  Source area for surfacewater intakes
-  County boundary

Access to Information

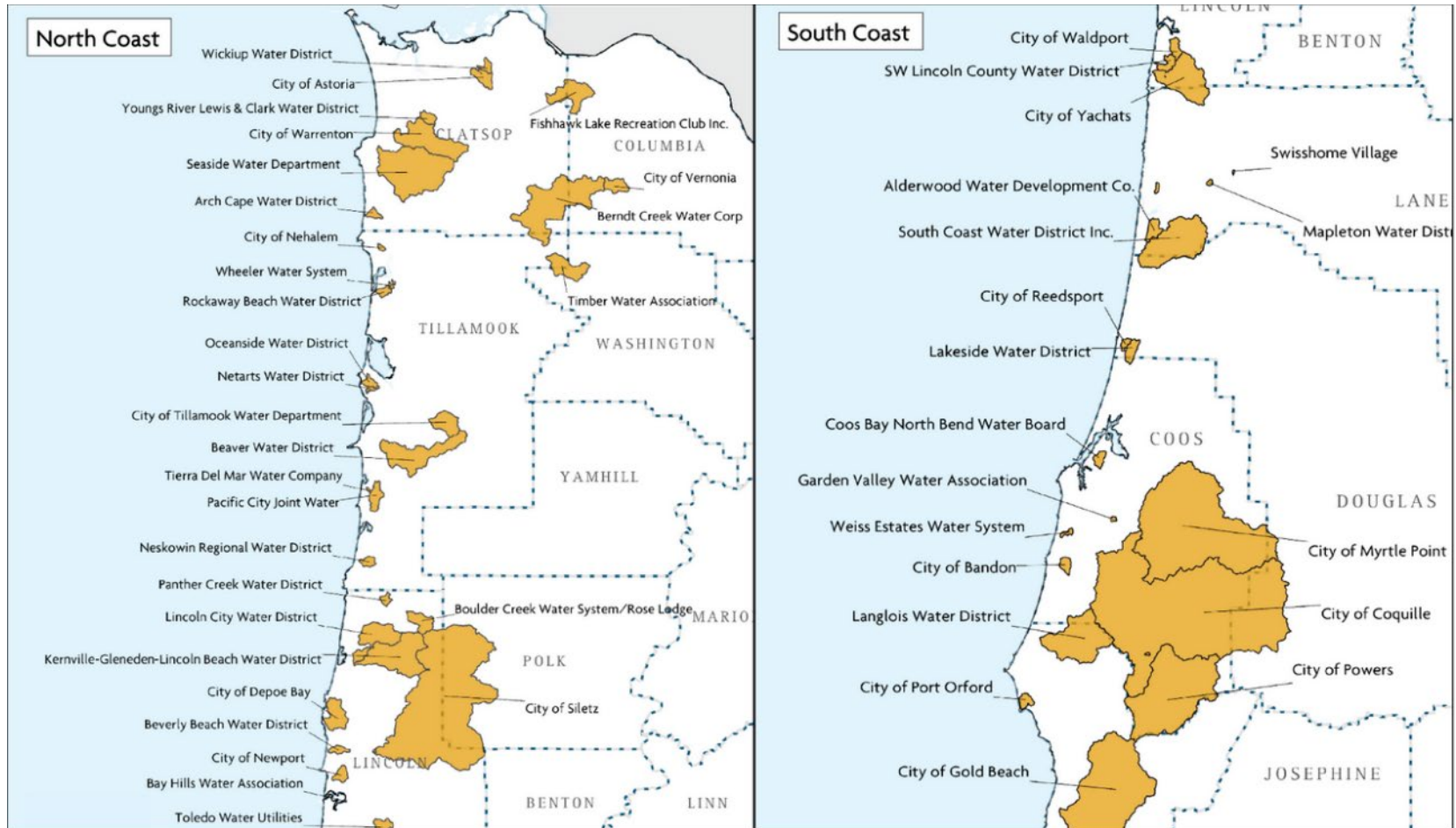
☰ MENU

Ecotrust

BLOG

Drinking water data for coastal communities

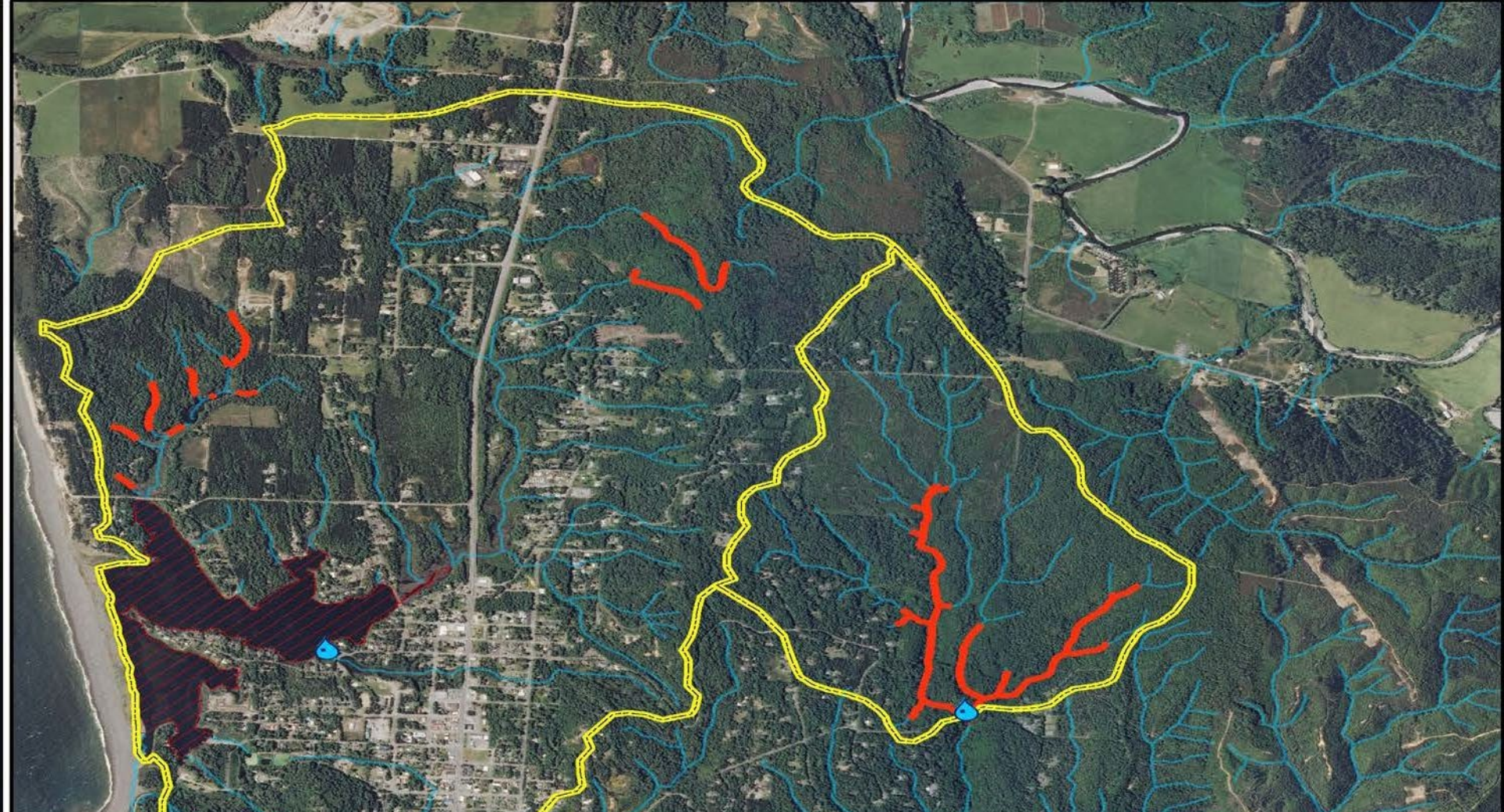
Community Outreach








Why the Watershed Council?







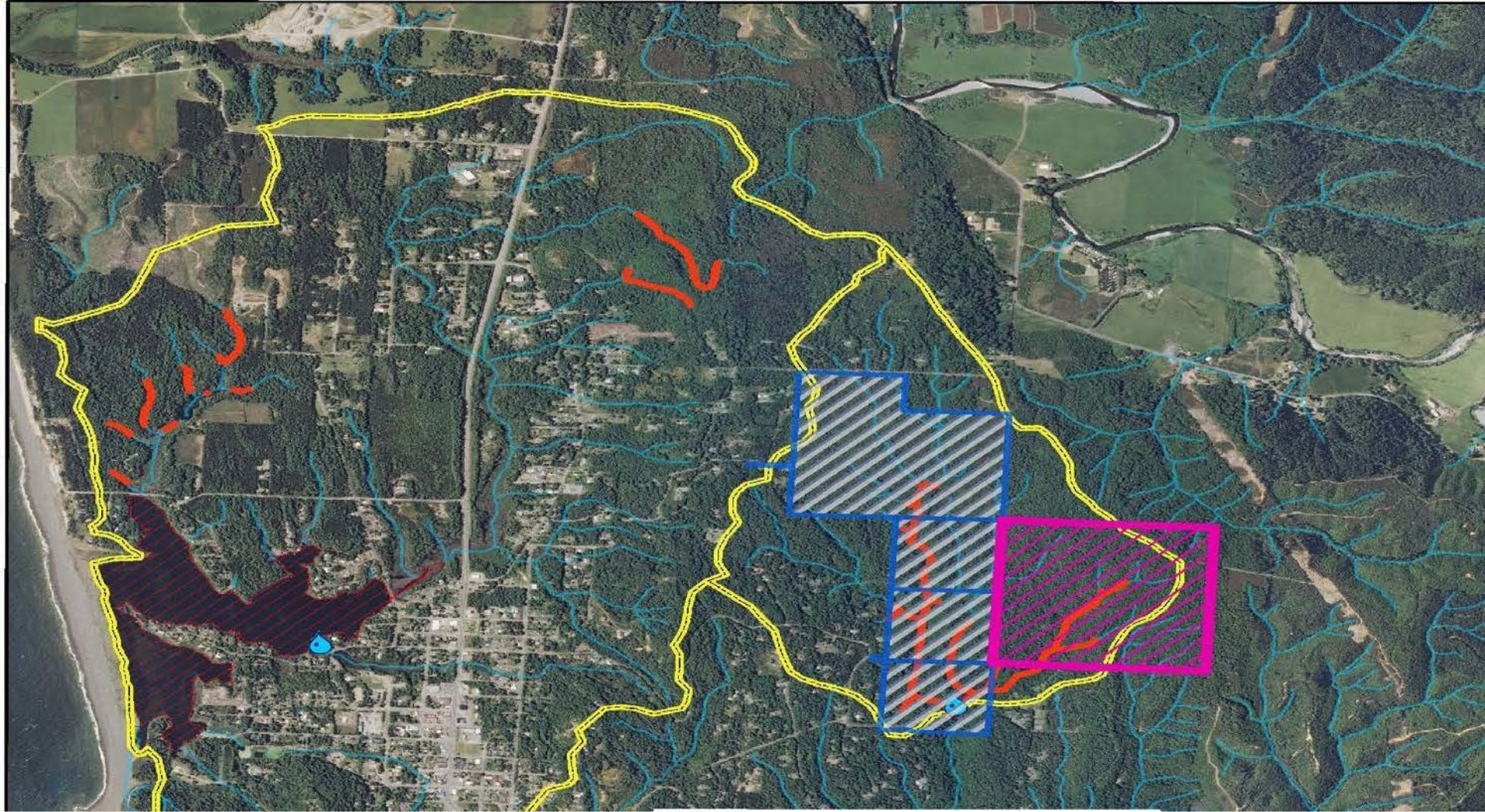
Legend

-  Public Water System, surface water intake
-  Port Orford drinking water source area
-  Streams (NHD) with high erosion potential
-  Lakes (NHD) with high erosion potential
-  Stream (NHD)








Notes on Imagery_Mosaic2011 base map.
 The Imagery Mosaic is from the 2011 National Agriculture Imagery Service (NAIS), 1 meter color aerial imagery from Farm Service Agency (FSA)/U.S. Dept of Agriculture (USDA). The imagery collected during the summer of 2005, 2008, and 2011, can be viewed or downloaded from Oregon Imagery Explorer.





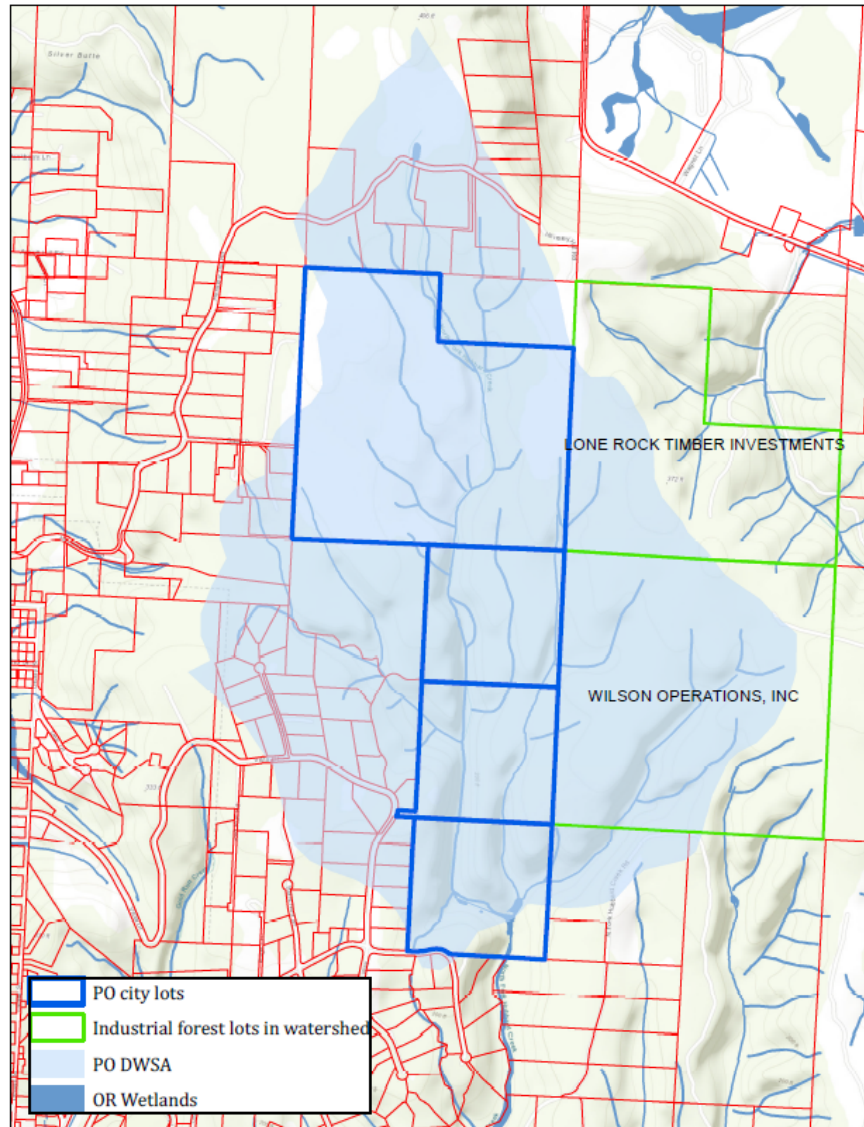
Legend

-  Public Water System, surface water intake
-  Port Orford drinking water source area
-  Streams (NHD) with high erosion potential
-  Lakes (NHD) with high erosion potential
-  Stream (NHD)



Notes on Imagery_Mosstc2011_base map:
 The imagery mosaics for the 2011 National Agriculture Inventory (NAI) were collected from the National Agriculture Imagery Mission (NAIP) by the National Agriculture Imagery Mission (NAIP) Service Agency (NSA) for the U.S. Department of Agriculture (USDA). The imagery was collected during the time period of 2005, 2009, and 2011, can be viewed or downloaded from Oregon Imagery Explorer.







Project Development and Workflow

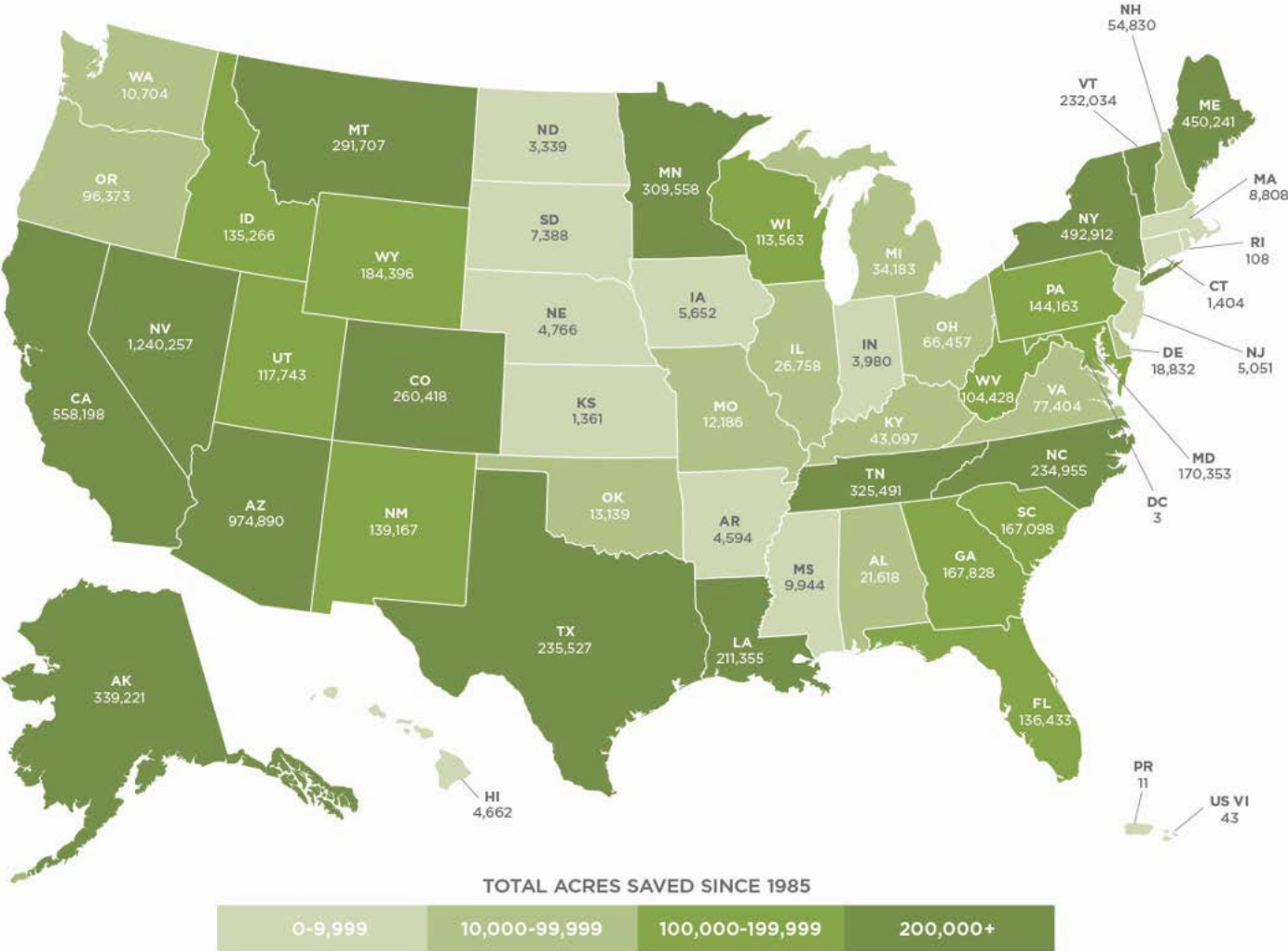


The Conservation Fund: Who Are We?

At the Fund, we make conservation work for America. By creating solutions that make environmental and economic sense, we are redefining conservation to demonstrate its essential role in our future prosperity.

Top-ranked for efficiency and effectiveness, we have worked in all 50 states to protect over 8 million acres of land since 1985.

Over 8 Million Acres Protected Since 1985





CONSERVATION ACQUISITION

Land, Water & Wildlife Protection



Providing land, water
& wildlife protection

Supplying bridge financing
to help secure important
landscapes, waterways,
forests, wild havens and
recreational areas

OUR IMPACT:

8M+ acres of land and water
resources protected

\$40M worth of land conserved
for every \$1M invested

\$1.6B saved for our partners

Partnership is Key to Conservation

- City of Port Orford
- Port Orford Watershed Council
- The Conservation Fund
- Wild Rivers Land Trust
- Coalition of Oregon Land Trusts
- Jerry Becker
- Spray Free Coast
- DEQ
- OHA
- ODF
- Sustainable Northwest
- Springboard Forestry
- Kalmiopsis Audubon Society
- Wild Rivers Coast Alliance
- CCD Business Development Corporation





Project Resources

Informational

- Oregon DEQ Updated Source Water Assessments
 - <https://www.deq.state.or.us/wq/dwp/swrpts.asp>
- Ecotrust Drinking Water Assessment Tool
 - <https://ecotrust.maps.arcgis.com/apps/MapJournal/index.html?appid=3d13b3b434254dfdb2ae6084619bf619#>
- Oregon DEQ
 - Julie Harvey, Drinking Water Protection Program Coordinator
 - Jacqueline Fern, Natural Resource Specialist
 - Joshua Seeds, Nonpoint Source Specialist
- Oregon Health Authority
 - Tom Pattee, Groundwater Coordinator
- Nonprofit
 - Michelle Smith, Coalition of Oregon Land Trusts, Water Project Manager
 - Kaola Swanson, The Conservation Fund

Financial

- Oregon DEQ Clean Water Revolving Fund
 - No loan cap, 50% forgivable, \$500,000 forgivable cap
 - <https://www.oregon.gov/deq/wq/cwsrf/Pages/CWSRF-Application.aspxPublicApproval>
- Oregon Health Authority Drinking Water State Revolving Fund
 - \$30,000 grant program, \$100,000 loan cap
 - <https://www.oregon.gov/oha/PH/HEALTHYENVIRONMENTS/DRINKINGWATER/SRF/Pages/index.aspx>
- Wild Rivers Coast Alliance
- Nonprofit
 - Kaola Swanson, The Conservation Fund

Project Workflow

The Conservation Fund

- Landowner Engagement
- Due Diligence
- Property Purchase
- Property Hold

The City of Port Orford

- Project Identification
 - Oregon DEQ Updated Source Water Assessment
- Public Approval to Partner
- Securing Financing
 - Oregon Clean Water State Revolving Fund
- Property Purchase
- Ownership and Management