

Drinking Water Assessment for the Upper Deschutes Water Quality Management Area

March 2026

Overview

- There are 173 public drinking water systems in the Upper Deschutes Agricultural Water Quality Management Area which utilize groundwater and surface water sources to serve approximately 227,839 persons regularly.
- A total of 11 public water systems have received one or more alerts within the past ten years for exceeding the Maximum Contaminant Level Goal for *E. coli* bacteria. Five public water systems had a Maximum Contaminant Level violation within the past five years.
- Four public water systems received an alert within the past ten years, and seven received a violation within the past five years for nitrate levels that exceed five milligrams per liter.
- There are 3,047 records of private domestic well sample results submitted to Oregon Health Authority's Real Estate Transaction program in the area. Of these, 371 measured nitrate concentrations greater than or equal to three milligrams per liter, or mg/L.
- Contaminants in water supplies potentially related to agriculture occur near human populations, agricultural land uses, and aquifers susceptible to contaminant infiltration.
- DEQ recommends public water systems utilize [Source Water Protection Practices](#) to prevent potential contamination and increase resiliency.
- Resources for addressing risks to drinking water supplies can be found in either the [Groundwater Resource Guide](#) or [Surface Water Resource Guide](#).
- DEQ recommends Oregon Department of Agriculture and the Soil and Water Conservation Districts include a task in the area plan to further evaluate agricultural land uses surrounding the groundwater source areas for the public water systems of Hidden Pines RV Park and Riverview Trailer Park and in the residential area north of La Pine.

Water use

There are 173 public water systems within the Upper Deschutes Agricultural Water Quality Management Area which obtain drinking water from a combination of surface and groundwater sources. Drinking water is an important beneficial use under the [Clean Water Act](#). When Clean Water Act standards are met in source waters, a drinking water treatment plant using standard technology can generate water meeting the [Safe Drinking Water Act](#) standards. **Figure 1** shows the drinking water source areas of the public water systems within the Upper Deschutes Agricultural Water Quality Management Area. A drinking water source area is defined as the area of land which contributes water to the drinking water supply and where potential contamination from human activities or natural sources may pose a threat to the water quality.

Of the 173 public water systems in the Upper Deschutes Agricultural Water Quality Management Area, 53 are active community public water systems which use either groundwater, surface water, or a combination of the

Translation or other formats

[Español](#) | [한국어](#) | [繁體中文](#) | [Русский](#) | [Tiếng Việt](#) | [العربية](#)
800-452-4011 | TTY: 711 | deqinfo@deq.oregon.gov

two sources to serve approximately 202,819 people on a regular basis, in addition to visitors at recreation sites. There are seven active non-transient, non-community workplace or school public water systems which use groundwater to serve 3,179 people regularly. The remaining 91 public water systems are transient non-community systems and state-regulated systems with an estimated service population of 13,748. There are an additional 22 public water systems in the Upper Deschutes Agricultural Water Quality Management Area that are currently inactive. See **Table 1** for a list of the public water systems, their classifications, primary source and activity status, and populations served.

The Upper Deschutes Agricultural Water Quality Management Area is primarily forested with some agricultural land uses present to the northeast and along the Little Deschutes River in the southern portion of the of the Management Area. Other land use and ownership within the Management Area includes private industrial forests, Oregon Department of Forestry, private rural lands, private urban lands, local government, other state lands, Bureau of Land Management, United States Forest Service, other federal lands, and Bureau of Indian Affairs (**Figure 2**).

Bacteria

Total coliform bacteria alerts and *E. coli* bacteria alerts for public water systems are generated by Oregon Health Authority when their presence is detected in sample results. Water systems sample for total coliform bacteria and confirmed detections trigger additional sampling for other pathogens (*E. coli*). Within the Upper Deschutes Agricultural Water Quality Management Area, 11 public water systems had alerts for detections of *E. coli* bacteria in the past ten years (**Figure 1, Table 1**). Five public water system had a violation with the Oregon Health Authority for *E. coli* bacteria in the past five years: Crescent Lake Lodge Resort and SMGV/WIDGI Creek (two violations each), Seventh Mountain Resort, Sno-Cap Water System, and USFS Simax Beach CG (one violation each).

A public water system will receive an MCL violation for *E. coli* bacteria if they collect a sample indicating total coliforms are present and the resample is also positive for either fecal coliform or *E. coli* bacteria. When *E. coli* is detected, additional site-specific review is typically needed to evaluate the source of *E. coli*, which may not be related to impacts to groundwater quality. Public water systems with *E. coli* detections are dispersed in the study area indicating regional aquifer contamination issues are not likely.

The locations of public water systems with *E. coli* bacteria alerts occur near areas designated for land use as private rural, and U.S. Forest Service lands. Refer to DEQ's [Surface Water Resource Guide](#) section 2.4.2 Bacteria Data and Surface Water Susceptibility to learn more about preventing bacterial contamination in surface water bodies from various land uses.

Nitrates

An alert for elevated nitrate concentrations is generated by the Oregon Health Authority when nitrate sample results for public water systems exceed 5 mg/L. Within the Upper Deschutes Agricultural Water Quality Management Area, four of the public water systems had an alert for elevated nitrate results in the past ten years, including Hidden Pines RV Park with 21 alerts and Riverview Trailer Park with 14 alerts. Seven public water systems had an MCL violation in the past five years (the MCL for nitrate is 10 mg/L): Avion WC-Tumalo West, Crescent Lake Junction Café, Holy Redeemer Catholic Church, Spring River Plaza, Sun Mountain Water System LLC, USFS Elk Lake CG/Guard St, USFS Little Fawn CG (one violation each).

There are numerous private groundwater wells for domestic use within the Upper Deschutes Agricultural Water Quality Management Area. The Domestic Well Testing Act database includes submitted records of real estate transaction testing data from 1989 to 2018. There are 3,047 records of private domestic well samples within the Management Area. Of these 3,047 records, 2,682 measured nitrate concentrations of 0 to 3 mg/L, 170 measured nitrate concentrations 3.01 to 5 mg/L, 97 measured nitrate concentrations 5.01 - 7mg/L, 69

measured nitrate concentrations 7.01 to 10mg/L and 29 of the records measured nitrate concentrations greater than 10mg/L (**Figure 1**). In the residential area north of LaPine about 10% of the real estate transaction testing nitrate results are greater than or equal to 5mg/L (160 out of approximately 1,600 results in the area). This area includes the two public water systems with multiple alerts for elevated nitrate results; Hidden Pines RV Park and Riverview Trailer Park (**Figure 3**). For wells testing at elevated concentrations, attention to well depth, well construction, nitrate leaching potential of local soils, and proximity to nutrient sources such as septic systems, fertilizer use areas, and high concentrations of livestock should be considered when investigating the cause of nitrate contamination.

DEQ recommends Oregon Department of Agriculture and the Soil and Water Conservation Districts include a task in the area plan to further evaluate agricultural land uses surrounding the groundwater source areas for the public water systems of Hidden Pines RV Park and Riverview Trailer Park and in the residential area north of La Pine. Implementation of best management practices in this area may reduce the potential for agricultural sources to impact drinking water sources (**Figure 3**).

Of the soils assessed in the Upper Deschutes Agricultural Water Quality Management Area, most have moderately high or high nitrate leaching potential, according to the Natural Resources Conservation Service's National Cooperative Soil Survey (**Figure 4**). Nitrate leaching potential information is not available for most of the forested area in the management area. Nitrate leaching potential is based on the area's slope, precipitation, and land use. Nitrate from fertilizers and septic systems can readily penetrate aquifers used for drinking water when leaching potential is high. Additionally, bacteria removal through soil filtration can be less effective in sandy soils. Measures to reduce leachable nitrate in soils reduce risk to groundwater sources of drinking water. Refer to section 5.0 - Pollutant Reduction Tools in the [Groundwater Resource Guide](#) to learn more about nitrate leachability and potential reduction strategies.

DEQ specifically addresses drinking water issues identified for public water systems. A query of Oregon Water Resources Department's water rights database for private domestic points of diversion (using a threshold of 0.005 cubic feet per second for domestic surface water rights that are household use only, not irrigation) identified 82 private domestic surface water rights in the Upper Deschutes Agricultural Water Quality Management Area (see **Figure 1**).

Other contaminants

Water quality samples from public water systems within the Upper Deschutes Agricultural Water Quality Management Area also detected other contaminants including sodium, lead, mercury, toluene, di(2-ethylhexyl) phthalate, and benzo(a)pyrene. These are unlikely to be related to agricultural activities.

Contact

For more information, please contact the [Drinking Water Protection Program](#) or send an email to drinkingwater.protection@deq.oregon.gov.

Table 1. Public Water Systems in the Upper Deschutes Ag WQMA

Note: Table 1 does not include public water systems that purchase drinking water from these water systems.

System Type:

"Community Water System (C)" means a public water system that has 15 or more service connections used by year-round residents, or that regularly serves 25 or more year-round residents.

"Non-Transient Non-Community Water System (NTNC)" means a public water system that is not a Community Water System and that regularly serves at least 25 of the same persons over 6 months per year.

"Transient Non-Community Water System (NC)" means a public water system that serves a transient population of 25 or more persons.

"Oregon Very Small ("Non-Public")" means a public water system, which serves 4 to 14 service connections or serves 10 to 24 people a day at least 60 days a year. Monitoring requirements for these systems are the same as those for Transient Non-Community water systems. This designation was recently changed to OVS for Oregon Very Small systems. Both designations are still used.

PWS ID	Public Water System Name	Primary Source	System Type	Population	MCL Alerts
4100100	Bend, City Of	Surface water	Community	77704	n/a
4101439	Agate Water System	Groundwater	Community	3153	n/a
4101190	Apache Water Company (Inactive)	Groundwater	Community	1600	n/a
4101476	Aspen Lakes Utility Co LLC	Groundwater	Community	150	n/a
4100094	Avion WC - Chaparral	Groundwater	Community	470	n/a
4101366	Avion WC - Drid	Groundwater	Community	60	n/a
4100091	Avion WC - Greater Avion	Groundwater	Community	35332	n/a
4101346	Avion WC - Highland Estates	Groundwater	Community	75	n/a
4101453	Avion WC - Long Butte (Inactive)	Groundwater	Community	700	n/a
4101382	Avion WC - Odin Falls Ranch	Groundwater	Community	120	n/a
4101230	Avion WC - South Redmond Heights	Groundwater	Community	190	n/a
4100123	Avion WC - Sun Country Wtr Saddleback	Groundwater	Community	300	n/a
4101160	Avion WC - Tetherow Crossing	Groundwater	Community	180	n/a
4101351	Avion WC - Tumalo Rim	Groundwater	Community	225	n/a
4101155	Avion WC - Tuscarora	Groundwater	Community	120	n/a
4100975	Avion WC - Wild River	Groundwater	Community	276	n/a
4100105	Avion WC-Klippel	Groundwater	Community	80	n/a
4101368	Avion WC-Tumalo West (Inactive)	Groundwater	Community	75	n/a
4101373	Bentwood Estates Water System	Groundwater	Community	80	n/a
4100086	Black Butte Ranch Corporation	Groundwater	Community	740	n/a
4101126	Cline Falls Mobile Home Park	Groundwater	Community	85	n/a
4100694	Cline Falls Oasis Imprv Dist	Groundwater	Community	80	n/a
4100244	Crescent Wtr Supply & Impr Dist	Groundwater	Community	900	n/a
4100862	Crooked River Ranch Wtr Co	Groundwater	Community	4000	n/a
4100117	Deschutes Mobile Park	Groundwater	Community	62	n/a
4100501	Deschutes Valley Water Dist	Groundwater	Community	11700	n/a
4100697	Desert Terrace Mobile Estates	Groundwater	Community	100	n/a
4101355	Eagle Crest Resort	Groundwater	Community	400	Nitrate

PWS ID	Public Water System Name	Primary Source	System Type	Population	MCL Alerts
4100118	Four Seasons MHP	Groundwater	Community	100	n/a
4100320	Gilchrist Water System LLC	Groundwater	Community	440	n/a
4194214	Green Acres RV Park	Groundwater	Community	135	n/a
4100695	Hidden Valley Mbl Ests Imp Dis	Groundwater	Community	240	n/a
4100090	Hunnell Hills Water System	Groundwater	Community	45	n/a
4100828	Indian Meadow Water Company	Groundwater	Community	500	E.coli
4100083	Juniper Mobile Park	Groundwater	Community	175	n/a
4105410	Junipine Acres	Groundwater	Community	70	n/a
4100696	La Casa Mia	Groundwater	Community	135	n/a
4101496	La Pine, City Of	Groundwater	Community	2807	n/a
4101096	Laidlaw Water District	Groundwater	Community	740	E.coli
4190192	Metolius Meadows Prop Owners	Groundwater	Community	285	n/a
4101466	Mountain View MHP	Groundwater	Community	104	n/a
4101478	Oregon Water Utilities - Cline Butte Inc	Groundwater	Community	2526	n/a
4100106	Ponderosa Pines Water Company	Groundwater	Community	900	n/a
4100107	Rancho El Sereno Homeowners (Inactive)	Groundwater	Community	90	n/a
4100693	Redmond Water Department	Groundwater	Community	37566	n/a
4101334	Rimrock West Imprvmnt Dist	Groundwater	Community	150	n/a
4101232	River Meadows Improvement Dist	Groundwater	Community	432	n/a
4101129	Riverview Trailer Park	Groundwater	Community	60	Nitrate
4100113	Roats Water System	Groundwater	Community	6469	n/a
4100115	Roats Woodside Ranch Ws (Inactive)	Groundwater	Community	685	n/a
4100826	Sisters, City Of	Groundwater	Community	3778	n/a
4101448	Smgv/Widgi Creek	Groundwater	Community	300	E.coli
4100827	Sno-Cap Water System	Groundwater	Community	90	E.coli
4100111	Sun Mountain Water System LLC	Groundwater	Community	740	n/a
4100846	Sunriver Water LLC/Sunriver Utilities	Groundwater	Community	4300	n/a
4100087	Tollgate Water Company	Groundwater	Community	800	n/a
4101109	Water Wonderland Improv Dist 1	Groundwater	Community	550	n/a
4101181	Water Wonderland Improv Dist 2	Groundwater	Community	1800	n/a
4190784	Bend Metro Parks-Shevlin Park	Groundwater	Transient Non-Community	300	n/a
4190785	Bend Metro Parks-Skyline Park	Groundwater	Transient Non-Community	300	n/a
4194012	Brand Ranch House (Inactive)	Groundwater	Transient Non-Community	180	n/a
4191002	Camp Caldera	Groundwater	Transient Non-Community	45	n/a
4105176	Camp Makualla Bsa (Inactive)	Groundwater	Transient Non-Community	325	n/a
4190514	Cold Springs Resort	Groundwater	Transient Non-Community	65	n/a
4190133	Crane Prairie Resort	Groundwater	Transient Non-Community	100	n/a

PWS ID	Public Water System Name	Primary Source	System Type	Population	MCL Alerts
4100245	Crescent Junction RV	Groundwater	Transient Non-Community	60	n/a
4195265	Crescent Lake Junction Cafe	Groundwater	Transient Non-Community	50	n/a
4194186	Crescent Lake Lodge Resort	Groundwater	Transient Non-Community	200	E.coli
4195167	Crooked River Dinner Train (Inactive)	Groundwater	Transient Non-Community	112	n/a
4191735	Cultus Lake Resort	Groundwater	Transient Non-Community	100	n/a
4194417	Deschutes Riverwood Country Store (Inactive)	Groundwater	Transient Non-Community	900	n/a
4195373	Diamond Meadows	Groundwater	Transient Non-Community	35	n/a
4195374	Diamond Summit	Groundwater	Transient Non-Community	15	n/a
4190497	East Lake Resort	Groundwater	Transient Non-Community	50	E.coli
4194862	East Lake RV Park	Groundwater	Transient Non-Community	50	n/a
4194834	Ed Staub & Sons - La Pine	Groundwater	Transient Non-Community	45	n/a
4191737	Elk Lake Resort	Groundwater	Transient Non-Community	100	n/a
4195463	Faith Hope & Charity Winery	Groundwater	Transient Non-Community	25	n/a
4195393	Fast Break Corner Store	Groundwater	Transient Non-Community	75	n/a
4195096	Gordys Truck Stop (Inactive)	Groundwater	Transient Non-Community	750	n/a
4194984	Graggs Classic Pizza (Inactive)	Groundwater	Transient Non-Community	100	n/a
4190137	Hidden Pines RV Park	Groundwater	Transient Non-Community	46	Nitrate
4194959	High Desert Sports Complex	Groundwater	Transient Non-Community	220	n/a
4194752	High Lakes Christian Church	Groundwater	Transient Non-Community	60	n/a
4195440	Holy Redeemer Catholic Church	Groundwater	Transient Non-Community	150	n/a
4100155	Hoodoos Camp Sherman Resort	Groundwater	Transient Non-Community	75	n/a
4194376	Keno Store, The	Groundwater	Transient Non-Community	75	n/a
4194069	La Pine Pks & Rec Rosland Cg	Groundwater	Transient Non-Community	35	n/a
4105388	Lake Chinook Village Store (Inactive)	Groundwater	Transient Non-Community	25	n/a
4191185	Lake Creek Lodge	Groundwater	Transient Non-Community	75	n/a
4194608	Lava Lake Lodge	Groundwater	Transient Non-Community	45	n/a

PWS ID	Public Water System Name	Primary Source	System Type	Population	MCL Alerts
4191738	Loge Camp, Entrada	Groundwater	Transient Non-Community	175	n/a
4194088	Manleys Tavern	Groundwater	Transient Non-Community	25	n/a
4194039	Odell Lake Resort	Groundwater	Transient Non-Community	100	n/a
4194535	Odell Sportsmen Center	Groundwater	Transient Non-Community	150	n/a
4194935	Odfw Fall River Fish Hatchery	Groundwater	Transient Non-Community	25	n/a
4194423	Odfw Wizard Falls	Groundwater	Transient Non-Community	178	n/a
4191021	Oprd Cline Falls State Park	Groundwater	Transient Non-Community	712	n/a
4191173	Oprd Cove Palisades - Crooked River	Groundwater	Transient Non-Community	600	n/a
4191036	Oprd Cove Palisades - Deschutes River	Groundwater	Transient Non-Community	950	E.coli
4191022	Oprd La Pine Rec Area-O/Nite	Groundwater	Transient Non-Community	300	n/a
4191025	Oprd Tumalo State Park	Groundwater	Transient Non-Community	895	n/a
4191751	Paulina Lake Lodge Inc	Groundwater	Transient Non-Community	200	n/a
4194805	Quail Run Golf Course Inc	Groundwater	Transient Non-Community	150	n/a
4194815	Redmond Moose Lodge #323	Groundwater	Transient Non-Community	100	n/a
4191753	Rock Springs Guest Ranch	Groundwater	Transient Non-Community	90	n/a
4190166	Round Lake Christian Camp	Groundwater	Transient Non-Community	110	n/a
4194153	Shelter Cove Resort/Marina	Groundwater	Transient Non-Community	45	n/a
4190142	Sisters Garden RV Resort	Groundwater	Transient Non-Community	130	Nitrate
4194932	Skyliners Lodge (HDESD)	Groundwater	Transient Non-Community	45	n/a
4191745	Sound Pacific Cascade RV Park	Groundwater	Transient Non-Community	150	n/a
4191761	Spring River Plaza	Groundwater	Transient Non-Community	250	E.coli
4194128	Suttle Lake United Method Camp	Groundwater	Transient Non-Community	75	n/a
4194129	Suttle Lodge And Boathouse	Groundwater	Transient Non-Community	100	n/a
4193777	Thousand Trails Inc	Groundwater	Transient Non-Community	575	n/a
4195519	Tumalo Lake Lodge	Groundwater	Transient Non-Community	31	n/a
4191758	Twin Lakes Resort (Inactive)	Groundwater	Transient Non-Community	150	n/a

PWS ID	Public Water System Name	Primary Source	System Type	Population	MCL Alerts
4195080	Twin Lakes Resort And RV Park	Groundwater	Transient Non-Community	205	n/a
4192531	USFS Allen Springs Cg (Inactive)	Groundwater	Transient Non-Community	60	n/a
4192530	USFS Allingham Campground	Groundwater	Transient Non-Community	375	n/a
4101083	USFS Chemult Ranger Station	Groundwater	Transient Non-Community	20	n/a
4192524	USFS Cinder Hill Campground	Groundwater	Transient Non-Community	70	n/a
4194067	USFS Cold Spring Campground	Groundwater	Transient Non-Community	25	n/a
4192502	USFS Crane Prairie Cg	Groundwater	Transient Non-Community	395	n/a
4194273	USFS Crescent Creek Cg Hp (Inactive)	Groundwater	Transient Non-Community	50	n/a
4192519	USFS Crescent Lake Cg	Groundwater	Transient Non-Community	150	n/a
4194068	USFS Cultus Lake Cg	Groundwater	Transient Non-Community	400	n/a
4192514	USFS East Davis Lake Cg	Groundwater	Transient Non-Community	76	n/a
4192523	USFS East Lake Campground	Groundwater	Transient Non-Community	55	n/a
4192536	USFS Elk Lake Cg/Guard St	Groundwater	Transient Non-Community	90	n/a
4194272	USFS Lava Lake Campground	Groundwater	Transient Non-Community	210	E.coli
4192545	USFS Lava Lands Visitor Ctr	Groundwater	Transient Non-Community	170	n/a
4192526	USFS Little Crater Cg	Groundwater	Transient Non-Community	160	n/a
4192505	USFS Little Cultus Lake Cg	Groundwater	Transient Non-Community	132	n/a
4105578	USFS Little Fawn Cg Hp	Groundwater	Transient Non-Community	100	n/a
4192532	USFS Lower Bridge Campground	Groundwater	Transient Non-Community	150	n/a
4194631	USFS Newberry Group Cg	Groundwater	Transient Non-Community	40	n/a
4194350	USFS North Davis Cg Hp (Inactive)	Groundwater	Transient Non-Community	30	n/a
4192525	USFS Paulina Lake Cg	Groundwater	Transient Non-Community	86	n/a
4194070	USFS Perry South Cg Hp #1	Groundwater	Transient Non-Community	135	n/a
4194071	USFS Perry South Cg Hp #2 (Inactive)	Groundwater	Transient Non-Community	168	n/a
4194072	USFS Perry South Cg Hp #3 (Inactive)	Groundwater	Transient Non-Community	168	n/a
4194510	USFS Perry South Cg Hp #4	Groundwater	Transient Non-Community	128	n/a

PWS ID	Public Water System Name	Primary Source	System Type	Population	MCL Alerts
4192542	USFS Prairie Campground (Inactive)	Groundwater	Transient Non-Community	25	n/a
4194349	USFS Quinn Meadow Cg Hp	Groundwater	Transient Non-Community	48	n/a
4192506	USFS Quinn River Campground	Groundwater	Transient Non-Community	61	n/a
4194073	USFS Riverside Cg Hp	Groundwater	Transient Non-Community	75	n/a
4192507	USFS Rock Creek Cg Hp1	Groundwater	Transient Non-Community	150	n/a
4194630	USFS Rock Creek Cg Hp2	Groundwater	Transient Non-Community	150	n/a
4192509	USFS Sheep Bridge Cg	Groundwater	Transient Non-Community	48	n/a
4194075	USFS Sheep Springs Cg Hp	Groundwater	Transient Non-Community	75	n/a
4194931	USFS Simax Beach Cg	Groundwater	Transient Non-Community	40	E.coli
4192508	USFS South Twin Lake Cg	Groundwater	Transient Non-Community	155	n/a
4192541	USFS Spring Campground	Groundwater	Transient Non-Community	340	n/a
4192518	USFS Sunset Cove Campground	Groundwater	Transient Non-Community	115	n/a
4192534	USFS Suttle Lake Cg	Groundwater	Transient Non-Community	350	n/a
4192520	USFS Trapper Creek Campground	Groundwater	Transient Non-Community	160	n/a
4195012	USFS Whitefish Horsecamp	Groundwater	Transient Non-Community	95	n/a
4105154	Willamette Pass Inn & Chalets	Groundwater	Transient Non-Community	25	n/a
4194033	Willamette Pass Resort	Groundwater	Transient Non-Community	80	n/a
4194978	Bend Airport	Groundwater	Non-Transient Non-Community	160	n/a
4194193	Bend-La Pine Public Schools (Inactive)	Groundwater	Non-Transient Non-Community	1650	n/a
4105019	Black Butte Elementary Sd 41	Groundwater	Non-Transient Non-Community	30	n/a
4195476	Cascades Academy Of Central Oregon	Groundwater	Non-Transient Non-Community	260	n/a
4193699	High Desert Museum	Groundwater	Non-Transient Non-Community	493	n/a
4194724	Lonza Bend Inc	Groundwater	Non-Transient Non-Community	110	n/a
4191747	Mt Bachelor Inc	Groundwater	Non-Transient Non-Community	1726	n/a
4194977	Russell Ind WC (Inactive)	Groundwater	Non-Transient Non-Community	125	n/a
4101058	Seventh Mountain Resort	Groundwater	Non-Transient Non-Community	400	E.coli
4191728	Bell-Air Motel	Groundwater	Oregon Very Small	20	n/a

PWS ID	Public Water System Name	Primary Source	System Type	Population	MCL Alerts
4194379	BPA-Redmond Substation	Groundwater	Oregon Very Small	20	n/a
4195589	Cloverdale School	Groundwater	Oregon Very Small	12	n/a
4191759	Tumalo Feed Company (Inactive)	Groundwater	Oregon Very Small	125	n/a

Figure 1: Drinking Water Source Areas for Public Water Systems in the Upper Deschutes Agricultural Water Quality Management Area

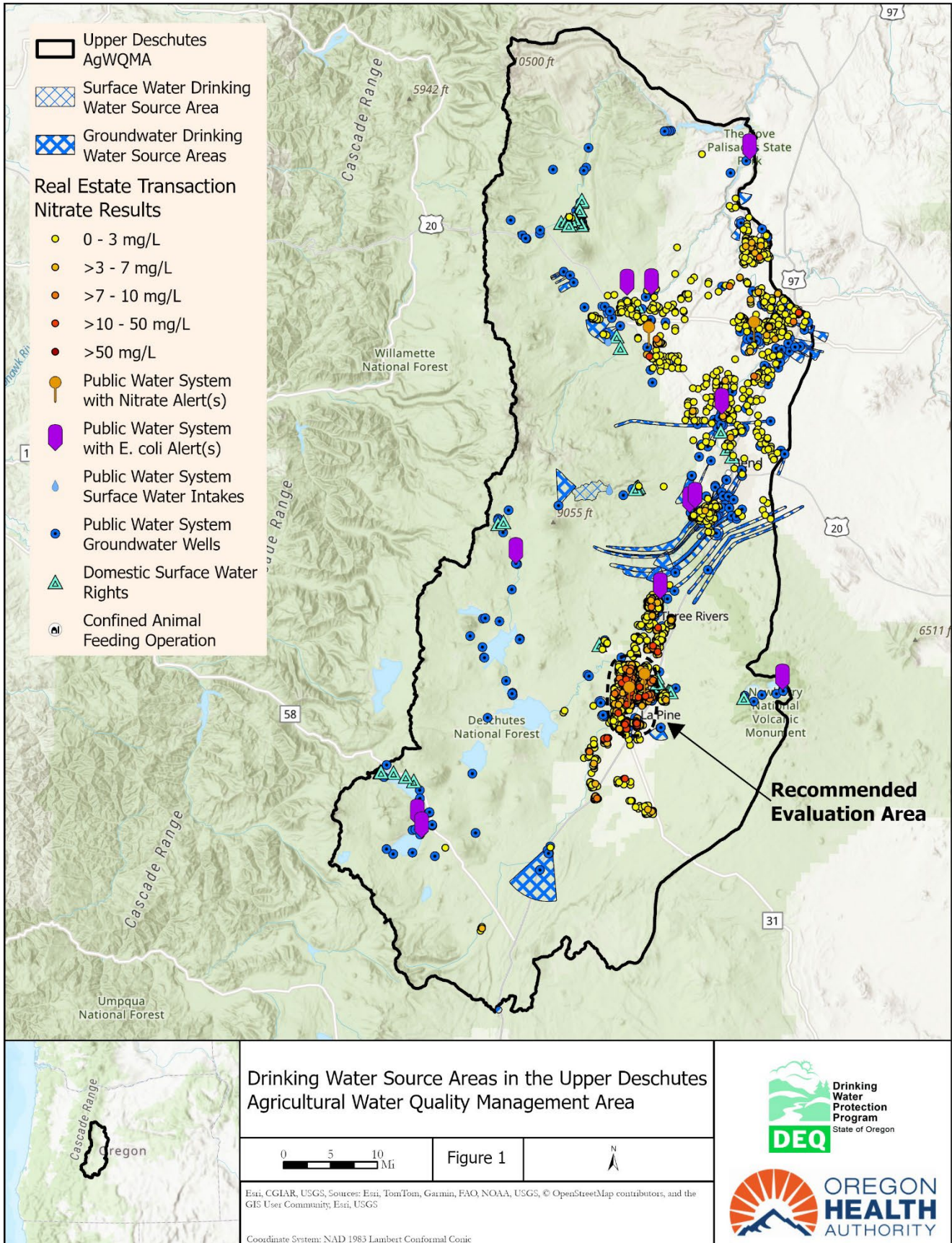


Figure 2: Drinking Water Source Areas for Public Water Systems in the Upper Deschutes Agricultural Water Quality Management Area, Land Use/Land Ownership

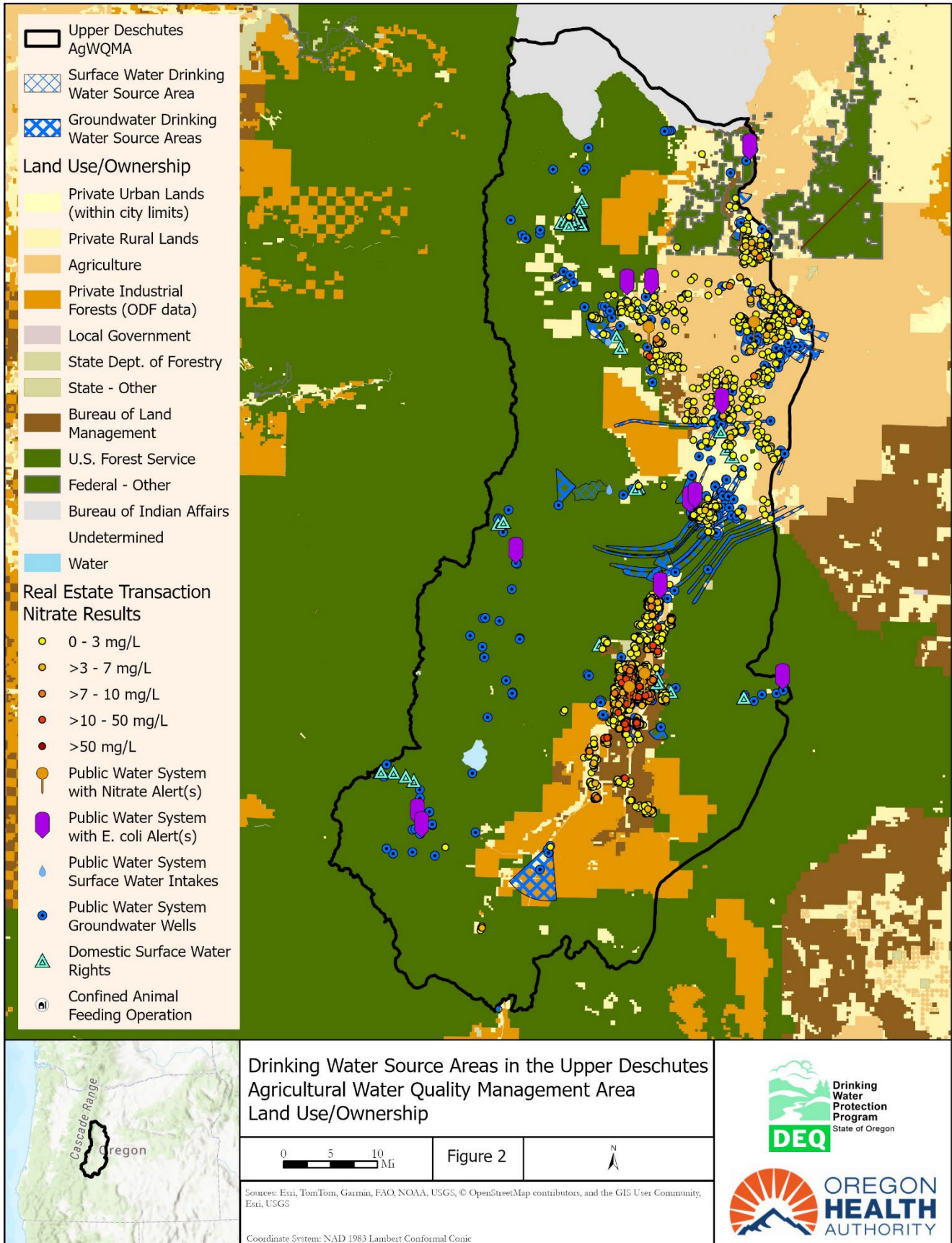


Figure 3: Drinking Water Source Areas for Public Water Systems in the Upper Deschutes Agricultural Water Quality Management Area, Detail of residential area north of La Pine

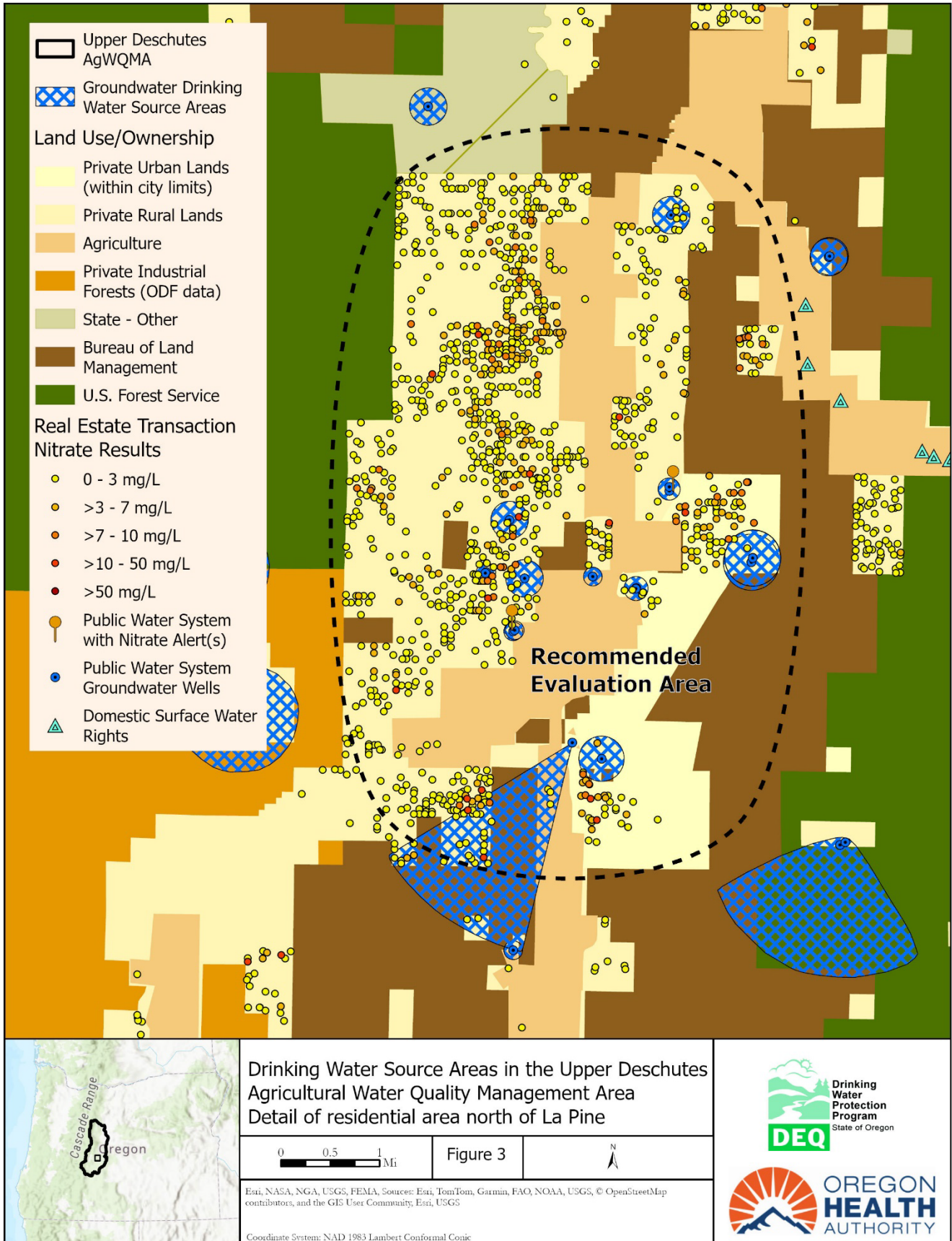
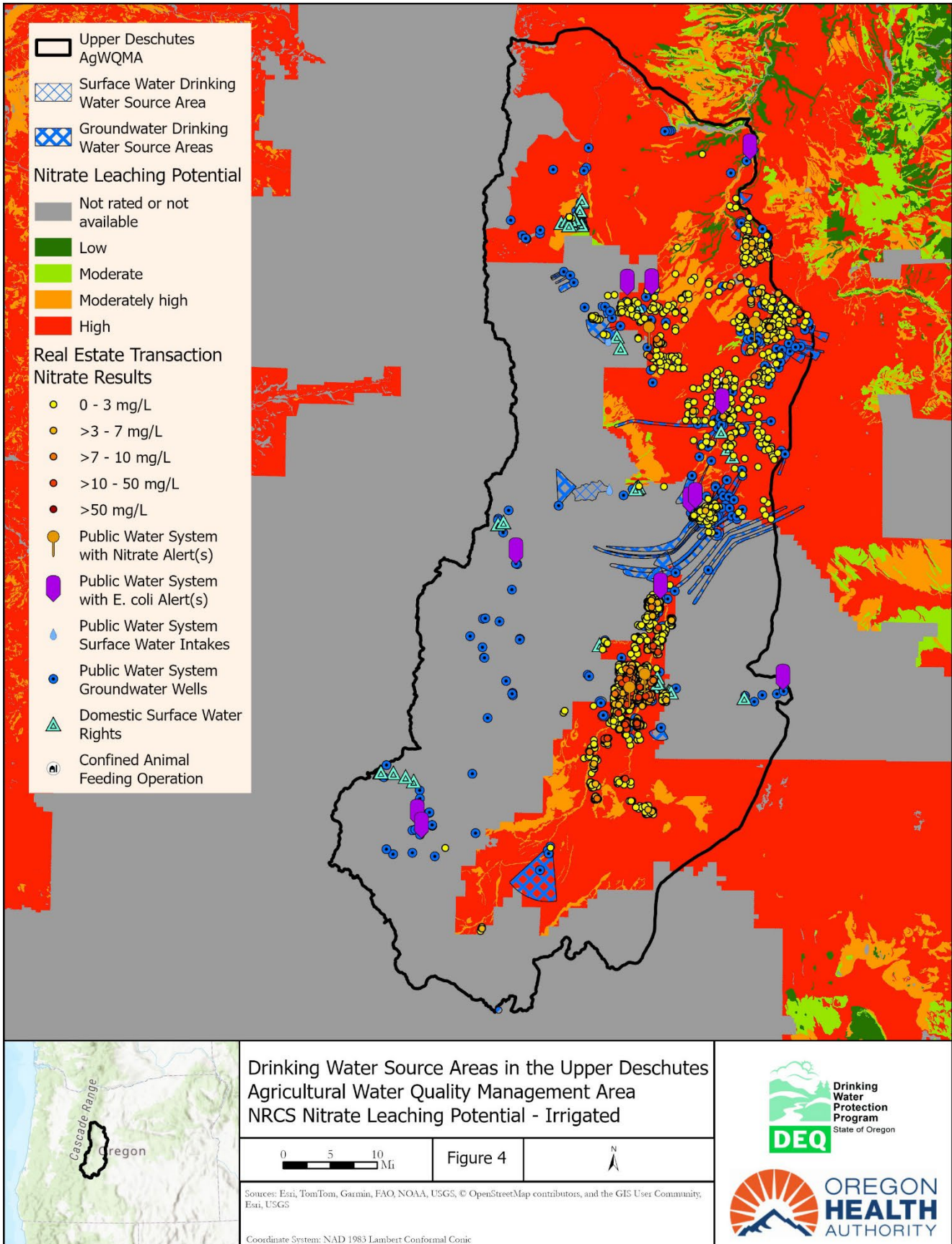


Figure 4: Drinking Water Source Areas for Public Water Systems in the Upper Deschutes Agricultural Water Quality Management Area, Nitrate Leaching Potential



Non-discrimination statement

DEQ does not discriminate on the basis of race, color, national origin, disability, age, sex, religion, sexual orientation, gender identity, or marital status in the administration of its programs and activities. For translations or alternate formats, visit DEQ's [Civil Rights and Environmental Justice page](#).