



Tips & Tricks for Working with Land Trusts

Margaret Treadwell, McKenzie River Trust



care

*McKenzie River Trust helps people protect and
for the lands and rivers they cherish in*

Land and Water Nurture Us All



- Healthy rivers sustain the vibrancy of our region, boosting well-being and the economy
- Conservation efforts buffer communities against climate change
- Watershed conservation helps ensure a reliable water supply for coastal communities
- Improving fish passage and reconnecting floodplains bolsters salmon populations

Your Local Partners in Conservation



- Non-profit organization
- Founded in 1989 by volunteers
- Has protected 9,000+ acres in Lincoln, Lane and Douglas Counties
- Coast Office opened 2021 in Newport
- Uses legal tools to protect land permanently
- Actively restores critical areas for fish and wildlife
- 500+ volunteers annually
- Supported by 1,500 individuals and families

Protect. Connect. Restore.

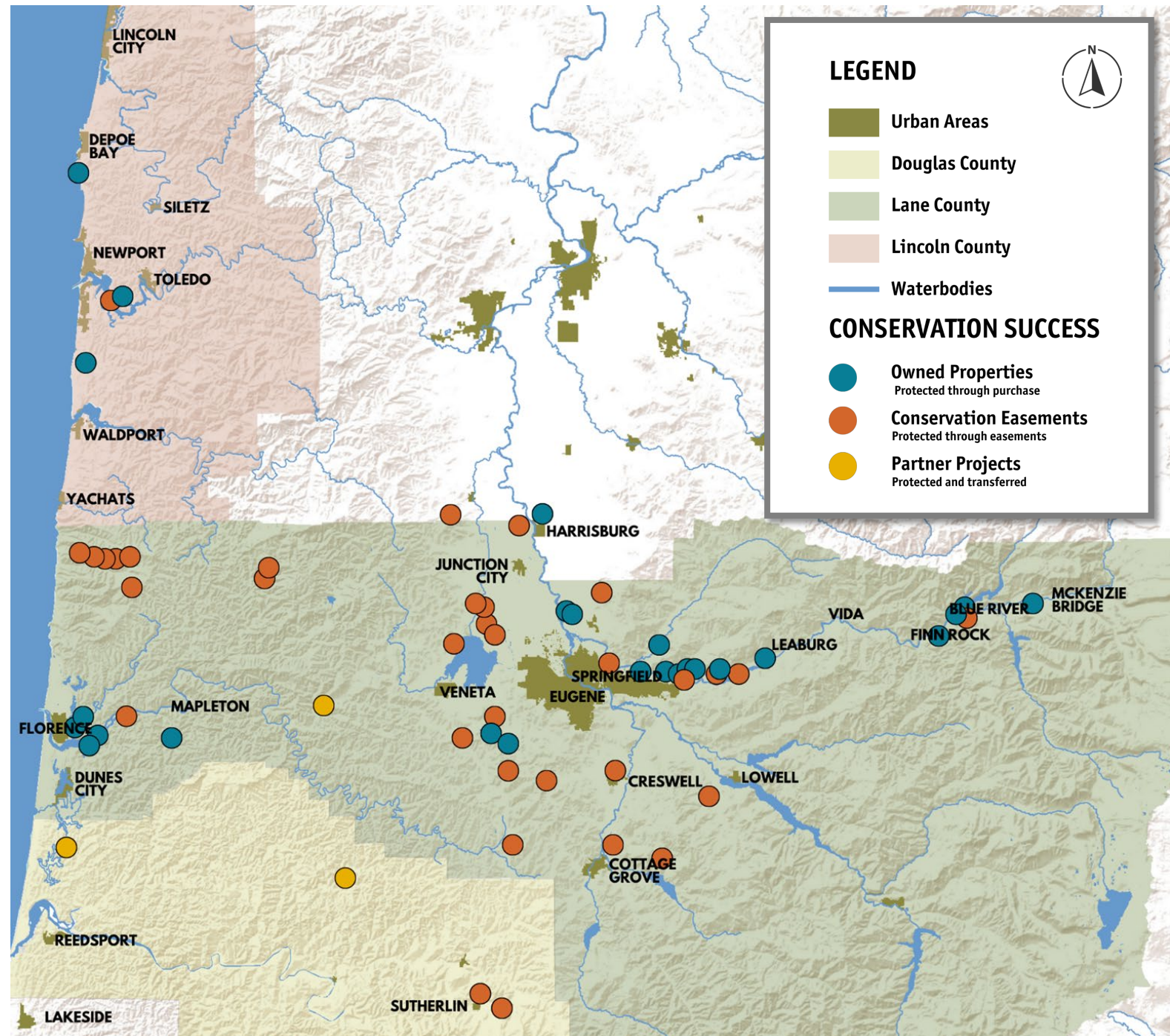


- Purchase land and conservation easements to protect special places in perpetuity
- Work with willing landowners, volunteers, and members to care for, and strengthen stewardship of lands and rivers in western Oregon
- Actively work to restore function to natural systems in watersheds from the Cascades to the Coast

Where We Work



Photo: Tim Lawes



What are Land Trusts?



Photo: Tim Lawes

Community-based non-profits

Actively work to conserve land

Public benefits

Help provide clean water, protect habitat for wildlife and plants and help fight the impacts of climate change

Land conservation in perpetuity

Ensure that lands acquired or placed under easement are properly conserved and stewarded for the long haul.

Community partnerships

Partner with other agencies, Indian tribes, and other nonprofits to connect people with the land

Land Trusts Serving the Central Coast



Oregon Land Trusts

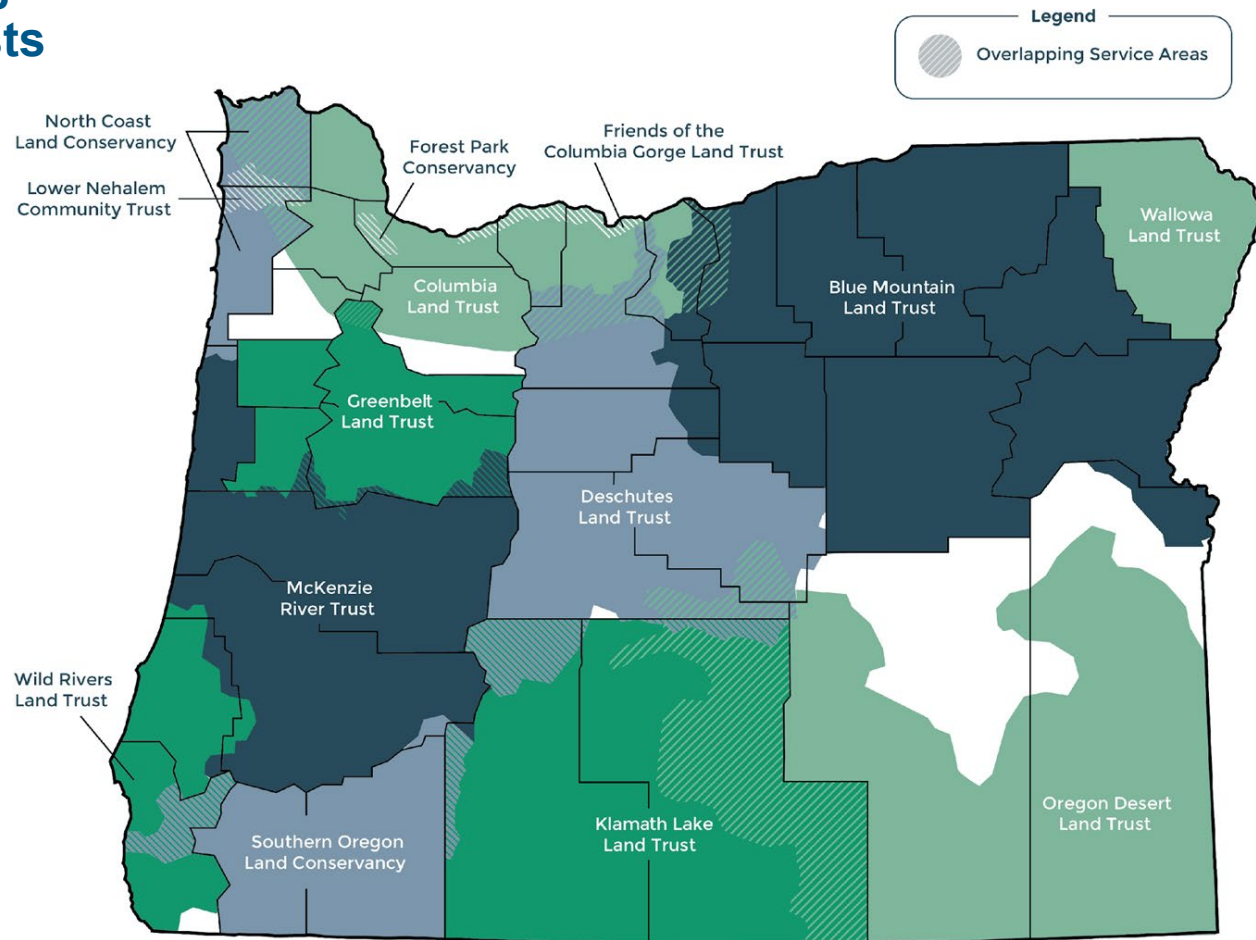


Image: Coalition of Oregon Land Trusts

- McKenzie River Trust: Siletz Bay to Reedsport
- North Coast Land Conservancy: from Siletz Bay north
- Wild Rivers Land Trust: from Reedsport south
- View the Future: Yachats area
- The Nature Conservancy
- The Wetlands Conservancy
- The Conservation Fund
- Western Rivers Conservancy

Conservation Options: Conservation Easements

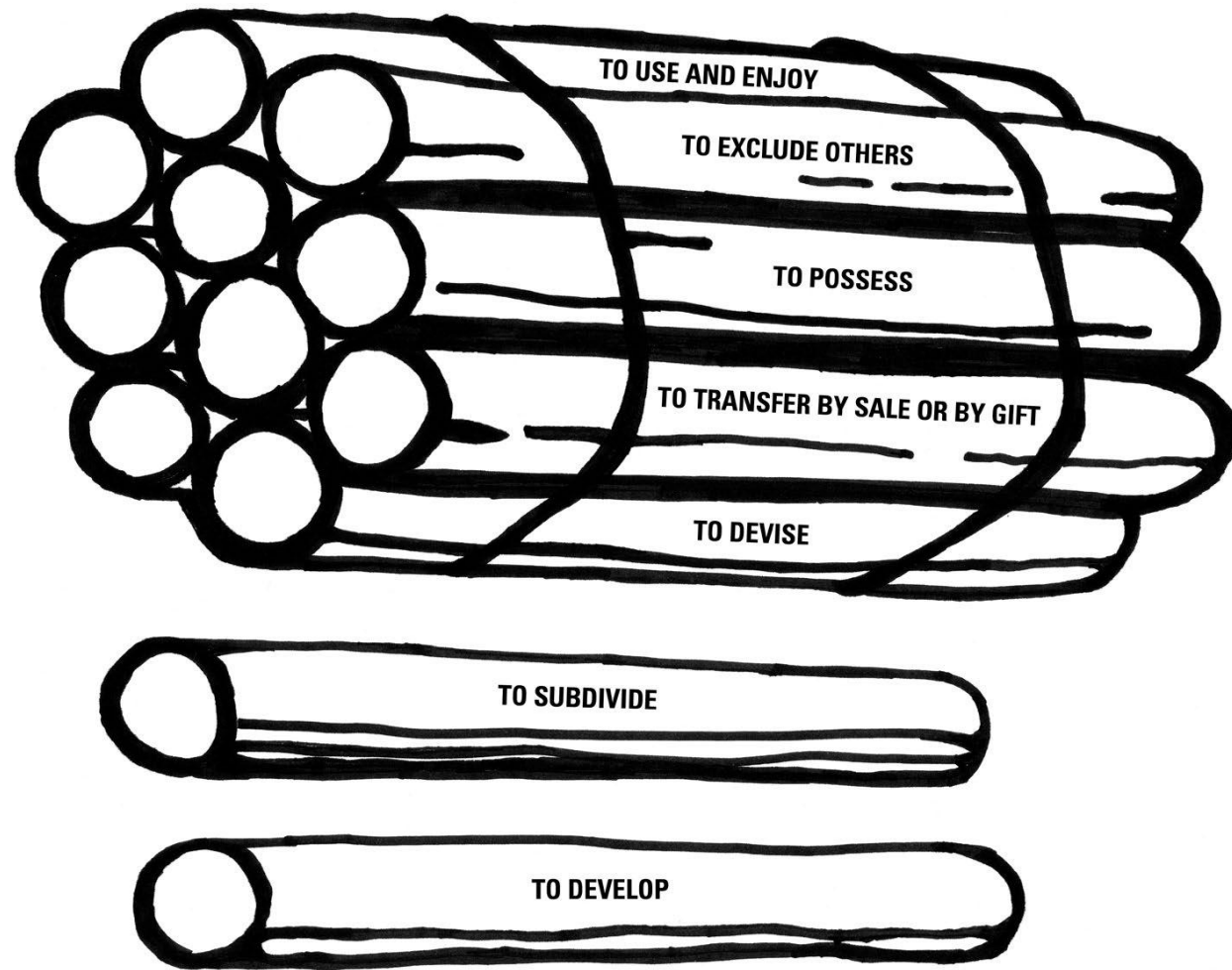


Image: Land Trust Alliance

- Conserves land while leaving it in private ownership
- Legal agreement between landowner and conservation organization or government agency
- Remains in force when land changes hands
- Flexible & unique to each property

Conservation Options: Land Donations



Leaves a legacy

Can save on income taxes and estate taxes

Relatively simple transaction

Important to get approval of intended recipient

Must meet land trust's mission, goals, and capacity

Conservation Options: Land Sale



- Fair Market Value Sale
- Bargain Sale
 - Brings price down
 - Tax reductions
- Acquisition Grants
 - May be available to fund the sale in part or entirety

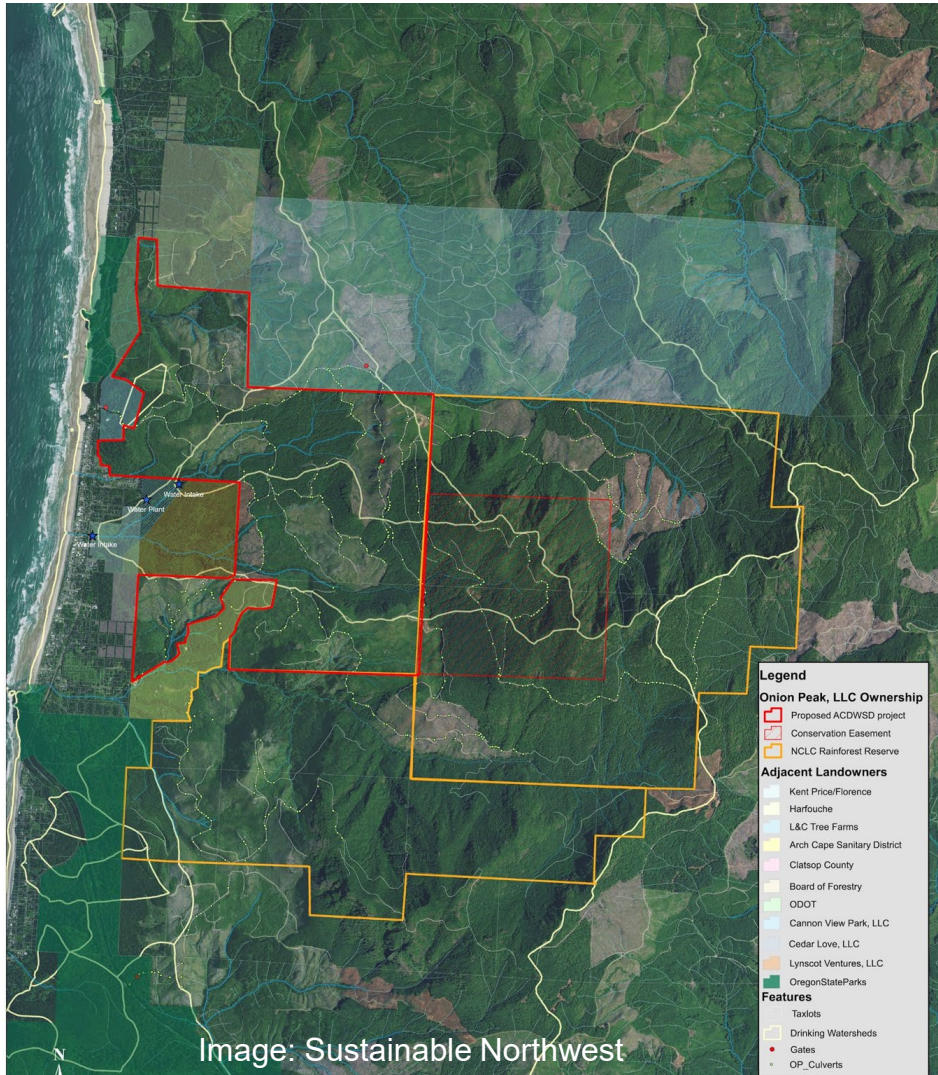
Combining Conservation Tools



Contiguous parcels conserved different ways Can help fill the funding pot and/or fund different types of conservation values or uses

Example: Arch Cape Community Forest (1,500 acres) and North Coast Land Conservancy's Rainforest Reserve (3,500 acres)

- Combined community forest and land trust property amounting to 5,000 acres of conserved coastal temperate rainforest
- Tapped into different funding sources including U.S. Forest Service's Forest Legacy Program (ACCF) and a \$12.1 million capital campaign (NCLC)
- Adjacent to the Cape Falcon Marine Reserve and Oswald West State Park, the Arch Cape Forest is a part of a habitat corridor that will benefit aquatic and forest species.
- *Information from Sustainable Northwest and North Coast Land Conservancy*



Land Trusts in Partnership with Communities, Local Governments, and Tribes



- Partner Assistance
With real estate transactions, due diligence, and grant writing
- Acting as a Bridge Owner
Holding a property in the interest of a future owner
- Holding Conservation Easements
That benefit a community

Things to Keep in Mind



Land Trust Priorities, Mission, & Capacity

Does your project fit?

Land Trust Capacity and Funding

Including long-term stewardship costs for both conservation easements and land owned by the land trust

Information to Have Ready

- Acreage
- Land use history
- Ownership
- Mortgages and other liens
- Landowner goals and priorities

Takeaways



Photo: Tim Lawes

Not all properties are a fit

Property must be a fit for the land trust in terms of its mission, priorities, capacity, and the timing

Land trusts need stewardship funding

Landowners may be asked to donate money so that the land trust has the funds to steward the property or easement in perpetuity

Partnerships are Key

Partnerships of local, state, and federal agencies, non-profits, and landowners are often the most powerful approach

Every Project Fails 3 Times

Try, try again

Be a part of protecting, connecting, and restoring the lands and rivers you cherish



Become a Member of McKenzie River Trust

Join 1,000+ members of your community in supporting conservation and land stewardship in the Upper Willamette Watersheds. Any donation makes you a member!



Volunteer for Conservation

Each year hundreds of people give back to the land and rivers through volunteering. Volunteers are at the core of our mission to help protect and care for the lands and rivers of western Oregon.



Join us for a Tour or Special Event

With monthly naturalist tours, fundraising events, and special concerts and film festivals, it's easy to show up and show your support of McKenzie River Trust throughout the year.



Help Us Spread the Word

We need your help to share our conservation story. Follow us on Social Media and let us know if there's an opportunity for us to present to a group or community you are a part of.

Speaker Contact Information



Margaret Treadwell
Central Coast Conservation Program Manager
McKenzie River Trust
Margaret@mckenzieriver.org

