

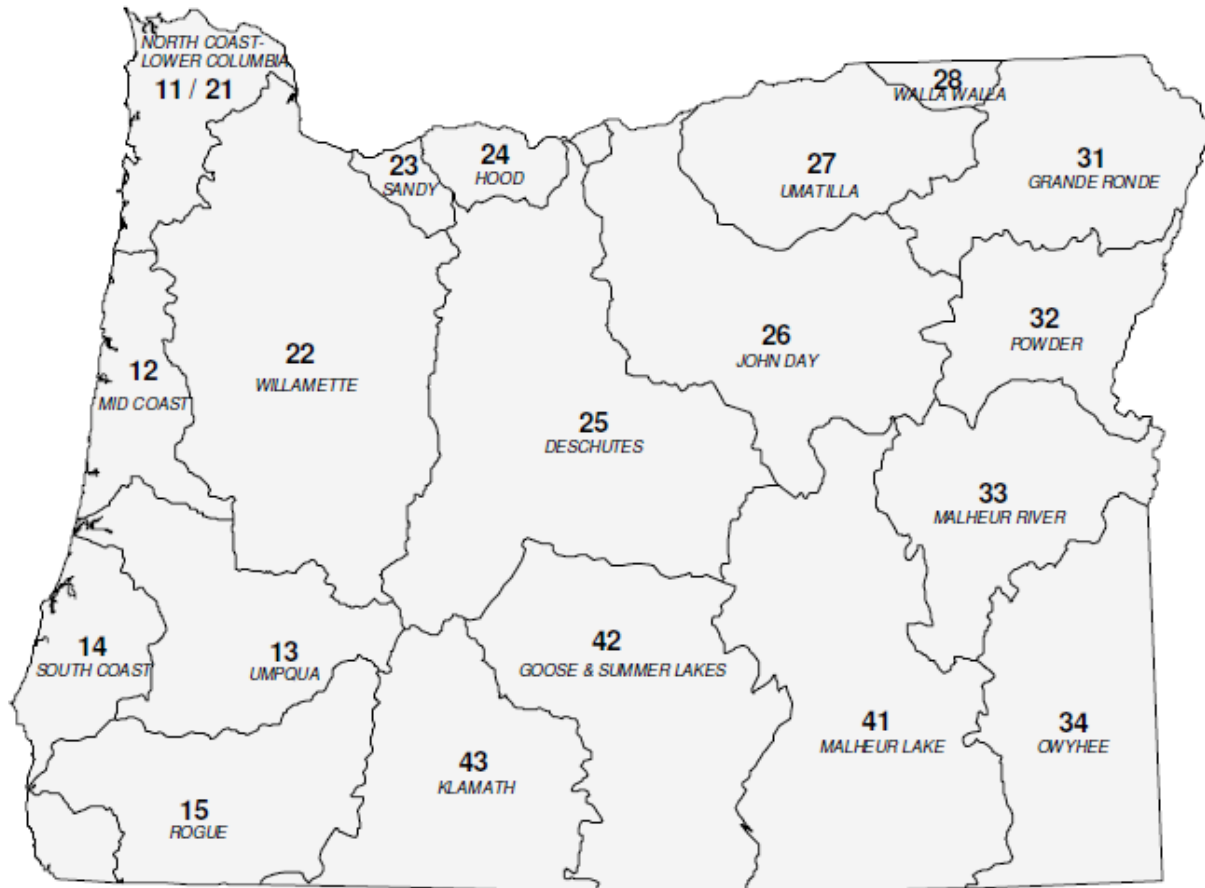


State of Oregon Department of Environmental Quality

OAR 340-041-0130

Tables and Figures

Figure 1: Oregon Basin Index Map



Basin Name	Basin #	OAR #
DESCHUTES	25	340-041-0130
GOOSE & SUMMER LKS	42	340-041-0140
GRANDE RONDE	31	340-041-0151
HOOD	24	340-041-0160
JOHN DAY	26	340-041-0170
KLAMATH	43	340-041-0180
MALHEUR LAKE	41	340-041-0190
MALHEUR RIVER	33	340-041-0201
MD COAST	12	340-041-0220
NORTH COAST-LWR COL	11-21	340-041-0230
OWYHEE	34	340-041-0250
POWDER	32	340-041-0260
ROGUE	15	340-041-0271
SANDY	23	340-041-0286
SOUTH COAST	14	340-041-0300
UMATILLA	27	340-041-0310
UMPQUA	13	340-041-0320
WALLA WALLA	28	340-041-0330
WILLAMETTE	22	340-041-0340



OAR 340-041-0130
Table 130A
Designated Beneficial Uses
Deschutes Basin

Beneficial Uses	Deschutes River Main Stem from Mouth to Pelton Regulating Dam	Deschutes River Main Stem from Pelton Regulating Dam to Bend Diversion Dam and for the Crooked River Main Stem	Deschutes River Main Stem above Bend Diversion Dam & for the Metolious River Main Stem	All Other Basin Stems
Public Domestic Water Supply ¹	X	X	X	X
Private Domestic Water Supply ¹	X	X	X	X
Industrial Water Supply	X	X	X	X
Irrigation	X	X	X	X
Livestock Watering	X	X	X	X
Fish & Aquatic Life ²	X	X	X	X
Wildlife & Hunting	X	X	X	X
Fishing	X	X	X	X
Boating	X	X	X	X
Water Contact Recreation	X	X	X	X
Aesthetic Quality	X	X	X	X
Hydro Power		X		
Commercial Navigation & Transportation				

¹ With adequate pretreatment (filtration and disinfection) and natural quality that meets drinking water standards.

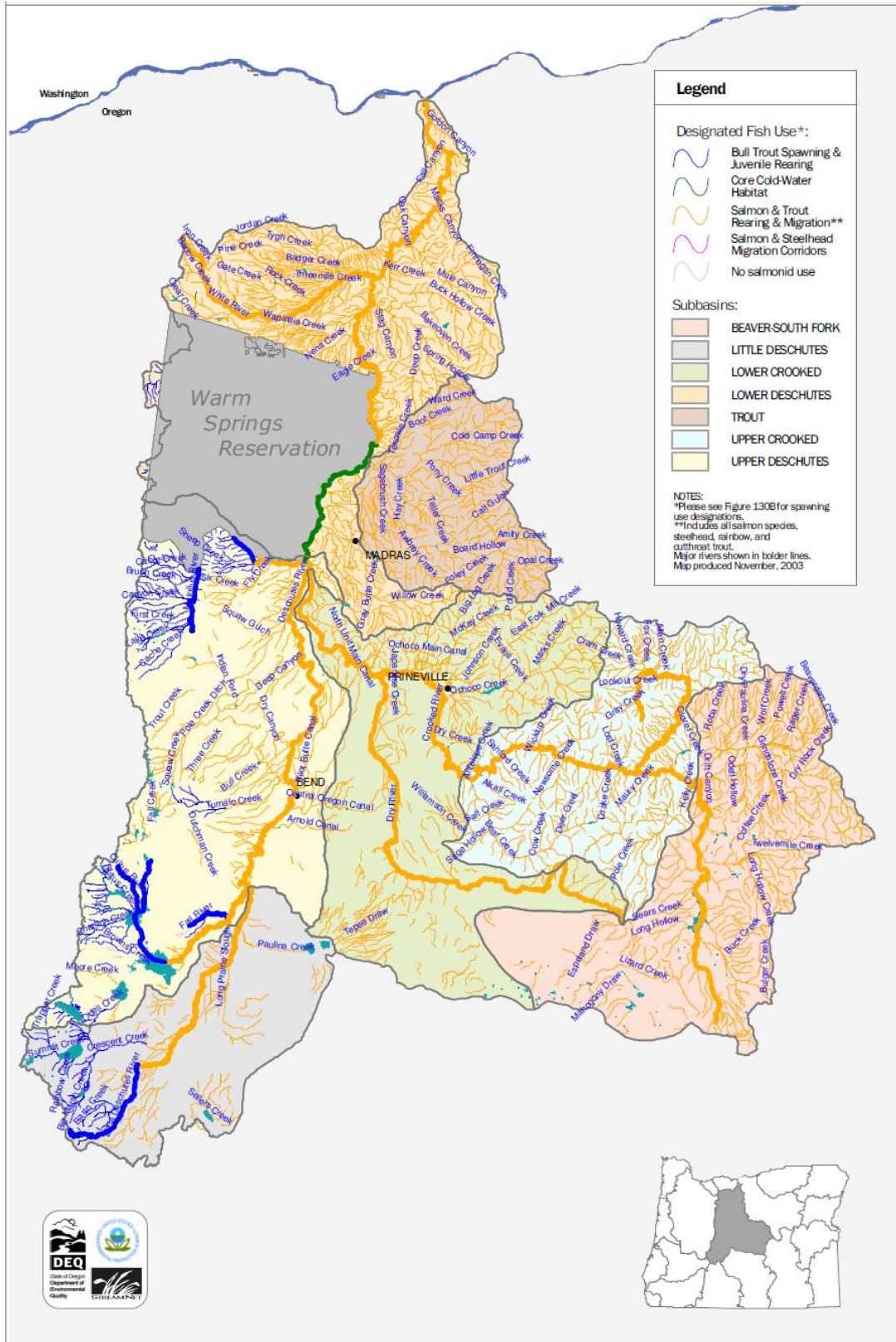
² See also Figures 130A and 130B for fish use designations for this river.



State of Oregon Department of Environmental Quality

OAR 340-041-0130 – Figure 130A

Fish Use Designations Deschutes Basin, Oregon





State of Oregon Department of Environmental Quality

OAR 340-041-0130 – Figure 130B

Salmon and Steelhead Spawning Use Designations Deschutes Basin, Oregon

