

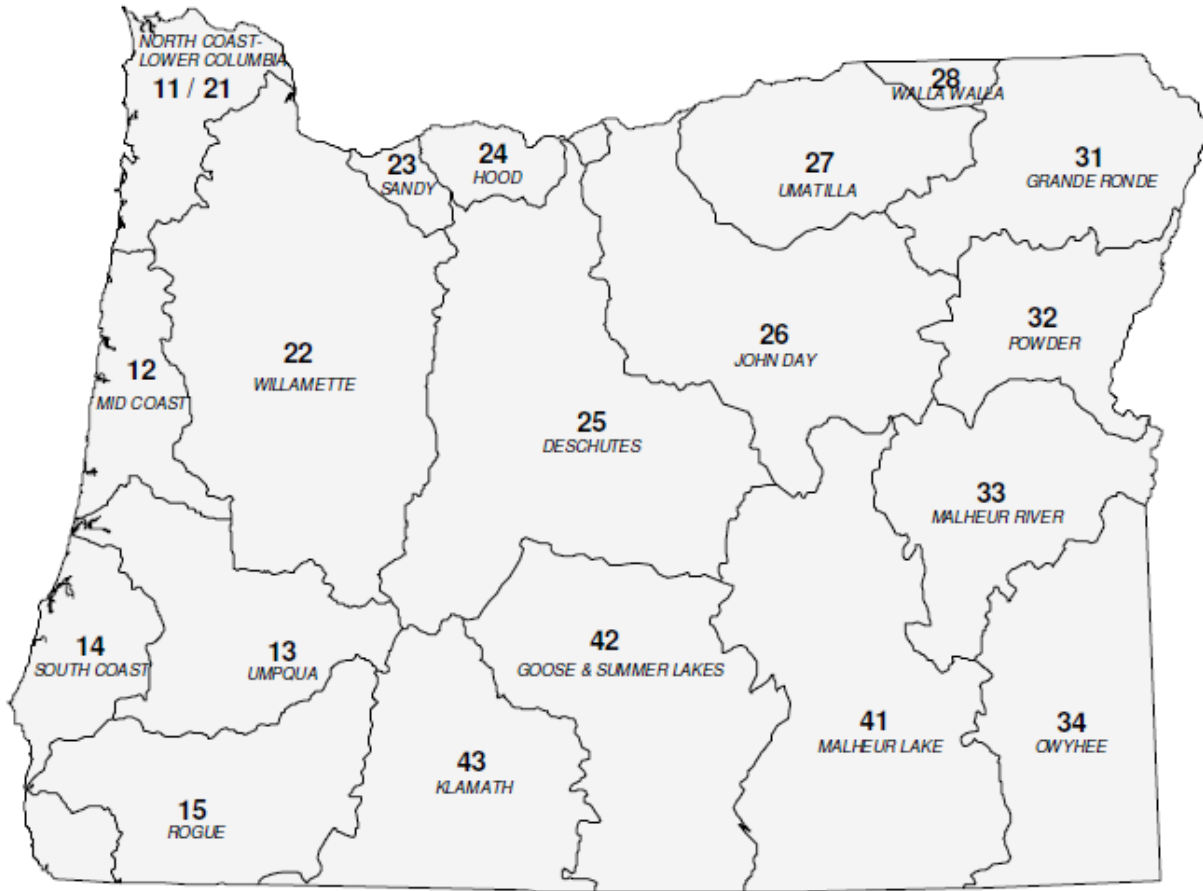


State of Oregon Department of Environmental Quality

# OAR 340-041-0310

## Tables and Figures

# Figure 1: Oregon Basin Index Map



Basin Name	Basin #	OAR #
DESCHUTES	25	340-041-0130
GOOSE & SUMMER LKS	42	340-041-0140
GRANDE RONDE	31	340-041-0151
HOOD	24	340-041-0160
JOHN DAY	26	340-041-0170
KLAMATH	43	340-041-0180
MALHEUR LAKE	41	340-041-0190
MALHEUR RIVER	33	340-041-0201
MD COAST	12	340-041-0220
NORTH COAST-LWR COL	11-21	340-041-0230
OWYHEE	34	340-041-0250
POWDER	32	340-041-0260
ROGUE	15	340-041-0271
SANDY	23	340-041-0286
SOUTH COAST	14	340-041-0300
UMATILLA	27	340-041-0310
UMPQUA	13	340-041-0320
WALLA WALLA	28	340-041-0330
WILLAMETTE	22	340-041-0340



**OAR 340-041-0310**  
**Table 310A**  
**Designated Beneficial Uses**  
**Umatilla Basin**

<b>Beneficial Uses</b>	<b>Umatilla Subbasin</b>	<b>Willow Creek Subbasin</b>	<b>West Division Main Canal – constructed channel<sup>3</sup></b>	<b>West Division Main Canal – overflow channels<sup>3</sup></b>
Public Domestic Water Supply <sup>1</sup>	X	X		
Private Domestic Water Supply <sup>1</sup>	X	X		
Industrial Water Supply	X	X	X	X
Irrigation	X	X	X	X
Livestock Watering	X	X	X	X
Fish & Aquatic Life <sup>2</sup>	X	X		X
Wildlife & Hunting	X	X	X	X
Fishing	X	X		X
Boating	X	X (at mouth)		
Water Contact Recreation	X	X	X	X
Aesthetic Quality	X	X	X	X
Hydro Power	X	X	X	X
Commercial Navigation and Transportation				

<sup>1</sup>With adequate pretreatment (filtration & disinfection) and natural quality to meet drinking water standards.

<sup>2</sup>See also Figures 310A and 310B for fish use designations for this basin. Note: The fish & aquatic life use designations for the “constructed channel” segment of the West Division Main Canal in this table supersede Figure 310A, which incorrectly identifies Redband trout use in that portion of the canal.

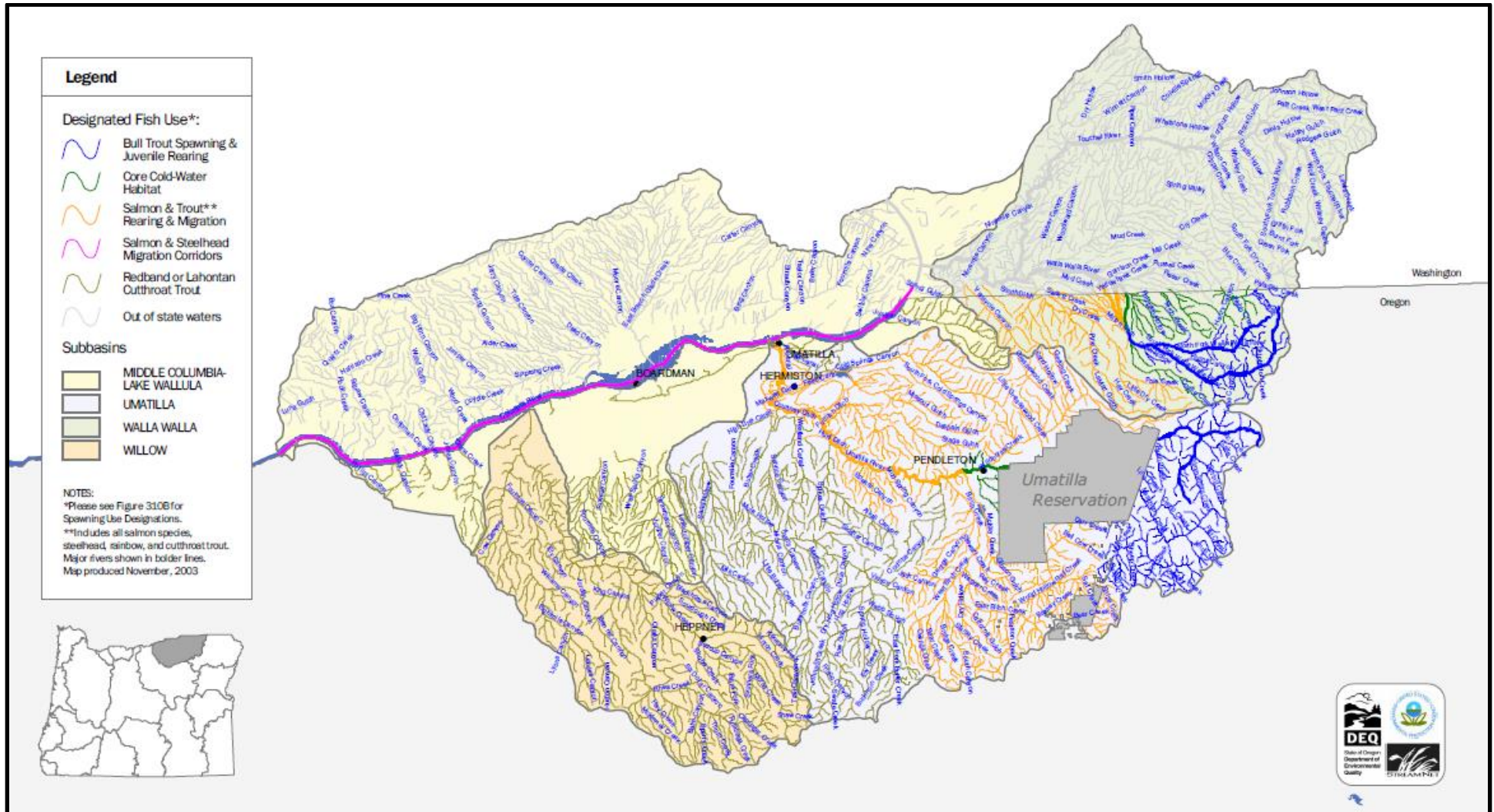
<sup>3</sup>The West Division Main Canal extends from the point of diversion from the Umatilla River to the confluence with the Columbia River. The canal consists of two segments. The constructed channel segment extends from the Umatilla River 27 miles down gradient to the flow control gate at the end of the concrete structure as it was originally built (concrete-lining was later added to parts of the overflow channels). The overflow channels segment extends from the lower end of the constructed channel to the outflow to the Columbia River.



State of Oregon Department of Environmental Quality

# OAR 340-041-0310 – Figure 310A

## Fish Use Designations\* – Umatilla Basin, Oregon





State of Oregon Department of Environmental Quality

# OAR 340-041-0310 – Figure 310B

## Salmon and Steelhead Spawning Use Designations\* Umatilla Basin, Oregon

