

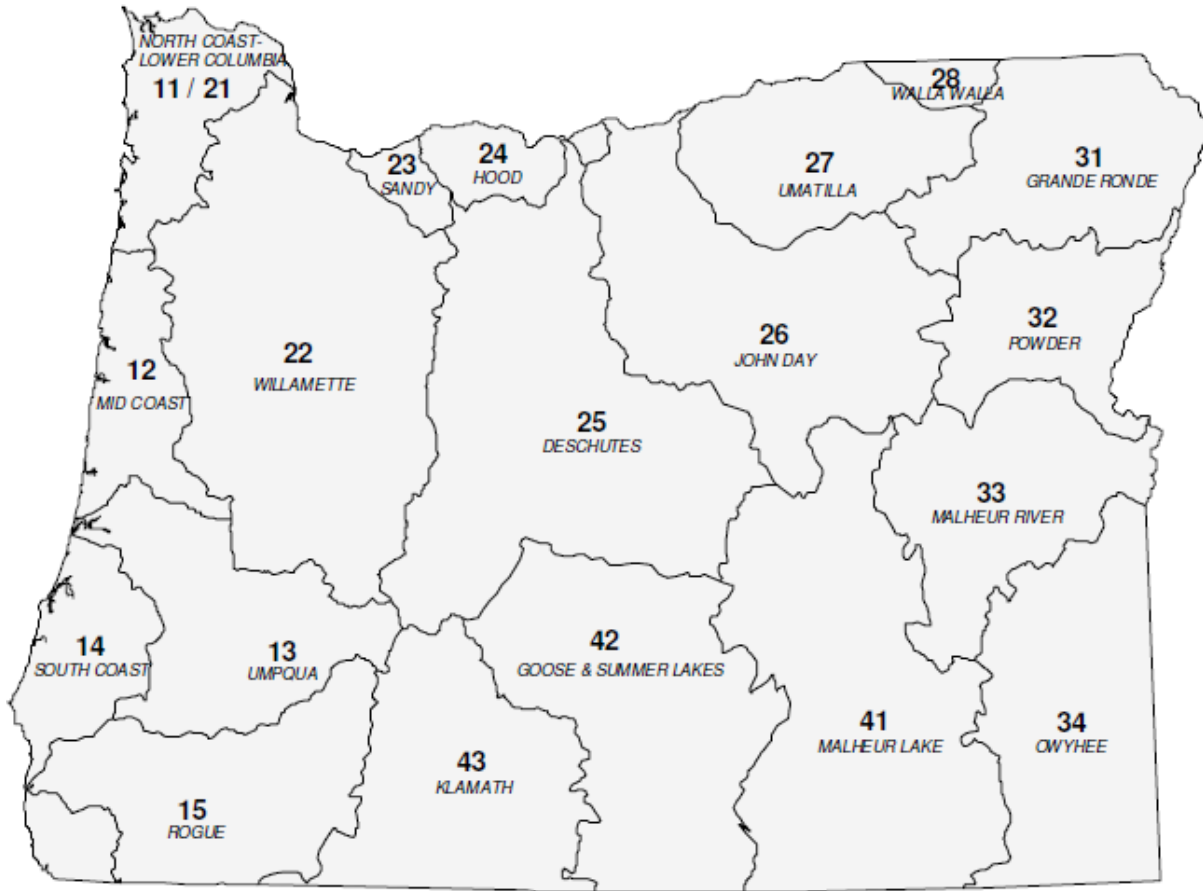


State of Oregon Department of Environmental Quality

# OAR 340-041-0320

## Tables and Figures

# Figure 1: Oregon Basin Index Map



Basin Name	Basin #	OAR #
DESCHUTES	25	340-041-0130
GOOSE & SUMMER LKS	42	340-041-0140
GRANDE RONDE	31	340-041-0151
HOOD	24	340-041-0160
JOHN DAY	26	340-041-0170
KLAMATH	43	340-041-0180
MALHEUR LAKE	41	340-041-0190
MALHEUR RIVER	33	340-041-0201
MD COAST	12	340-041-0220
NORTH COAST-LWR COL	11-21	340-041-0230
OWYHEE	34	340-041-0250
POWDER	32	340-041-0260
ROGUE	15	340-041-0271
SANDY	23	340-041-0286
SOUTH COAST	14	340-041-0300
UMATILLA	27	340-041-0310
UMPQUA	13	340-041-0320
WALLA WALLA	28	340-041-0330
WILLAMETTE	22	340-041-0340



**OAR 340-041-0320**  
**Table 320A**  
**Designated Beneficial Uses**  
**Umpqua Basin**  
 (November 2003)

Beneficial Uses	Umpqua R. Estuary to Head of Tidewater and Adjacent Marine Waters	Umpqua R. Main from Head of Tidewater to Confluence of N. and S. Umpqua Rivers	North Umpqua River Main Stem	South Umpqua River Main Stem	All Other Tributaries to Umpqua, North and South Umpqua Rivers
Public Domestic Water Supply <sup>1</sup>		X	X	X	X
Private Domestic Water Supply <sup>1</sup>		X	X	X	X
Industrial Water Supply	X	X	X	X	X
Irrigation		X	X	X	X
Livestock Watering		X	X	X	X
Fish & Aquatic Life <sup>2</sup>	X	X	X	X	X
Wildlife & Hunting	X	X	X	X	X
Fishing	X <sup>3</sup>	X	X	X	X
Boating	X	X	X	X	X
Water Contact Recreation	X <sup>3</sup>	X	X	X	X
Aesthetic Quality	X	X	X	X	X
Hydro Power			X	X	X
Commercial Navigation & Transportation	X				

<sup>1</sup> With adequate pretreatment (filtration and disinfection) and natural quality to meet drinking water standards.

<sup>2</sup> See also Figures 320A and 320B for fish use designations for this basin.

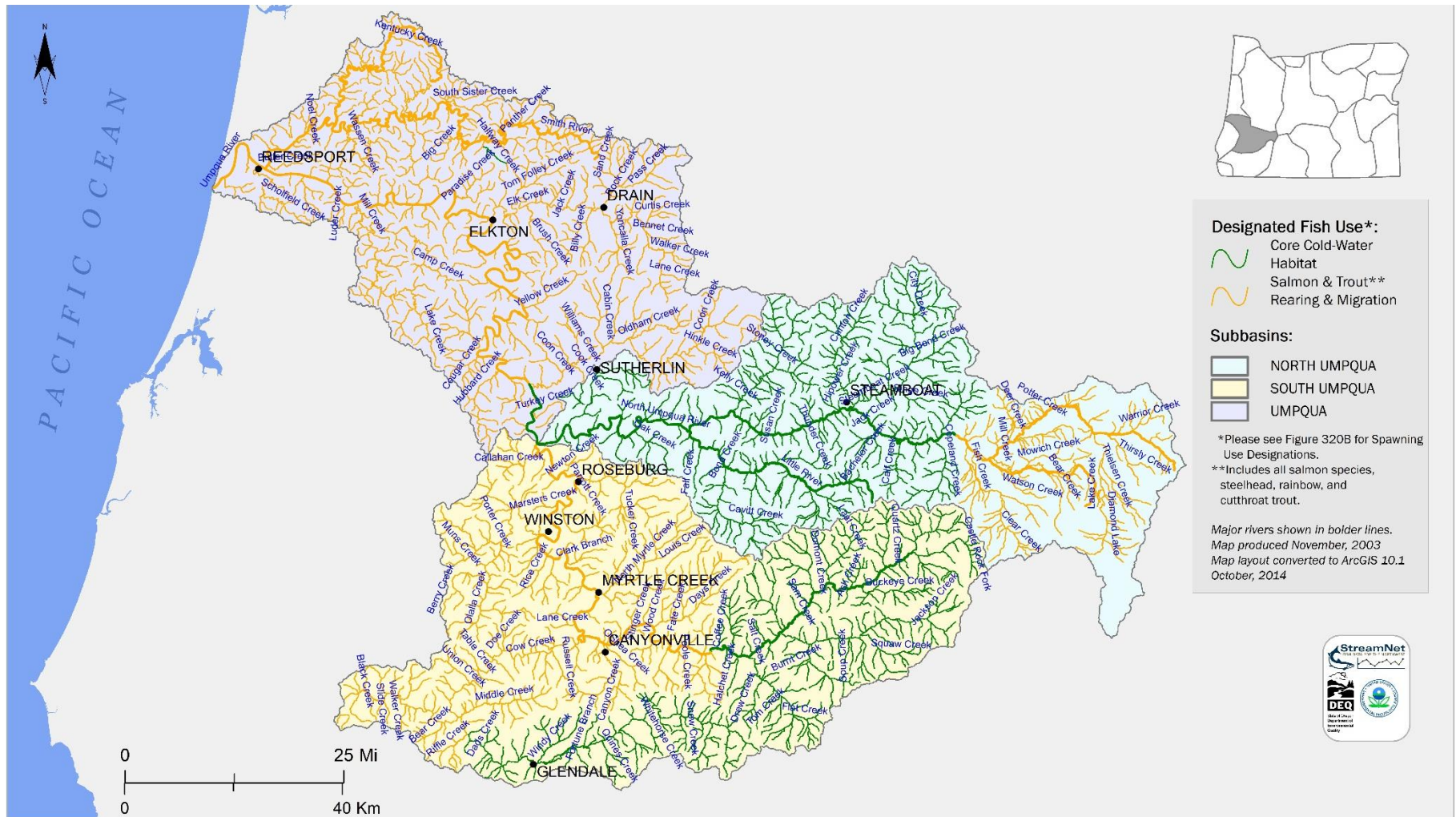
<sup>3</sup> For coastal water contact recreation and shellfish harvesting uses in the Umpqua River Estuary and Adjacent Marine Waters, see also Figure 320C.



State of Oregon Department of Environmental Quality

# OAR 340-041-0320 – Figure 320A

## Fish Use Designations\* - Umpqua Basin, Oregon



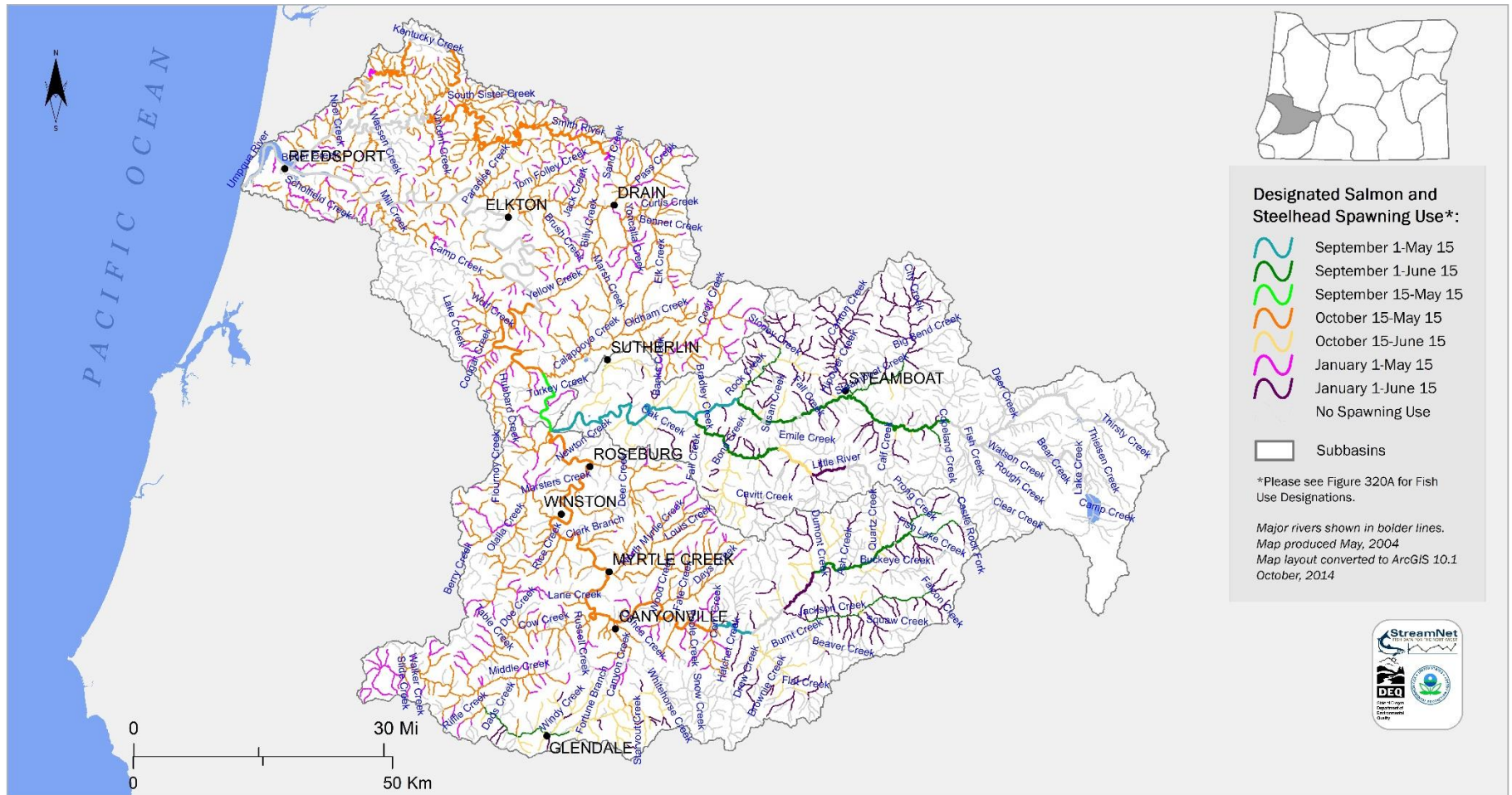




State of Oregon Department of Environmental Quality

# OAR 340-041-0320 – Figure 320B

## Salmon and Steelhead Spawning Use Designations\* Umpqua Basin, Oregon





State of Oregon Department of Environmental Quality

# OAR 340-041-0320 – Figure 320C

## Water Contact Recreation and Shellfish Harvesting Designated Uses Umpqua Basin, Oregon

