

Program of All-inclusive Care for the Elderly (PACE)

House Interim Committee On Human Services

Mike McCormick, Interim Director

Jane-ellen Weidanz, Long Term Services and Supports Policy Administrator

ODHS Office of Aging and People with Disabilities

June 2, 2022

Agenda

Program of All-Inclusive Care for the Elderly (PACE)

- History
- Service model overview
- Services
- Rates
- Expansion in Oregon
- Procurement process





History and overview

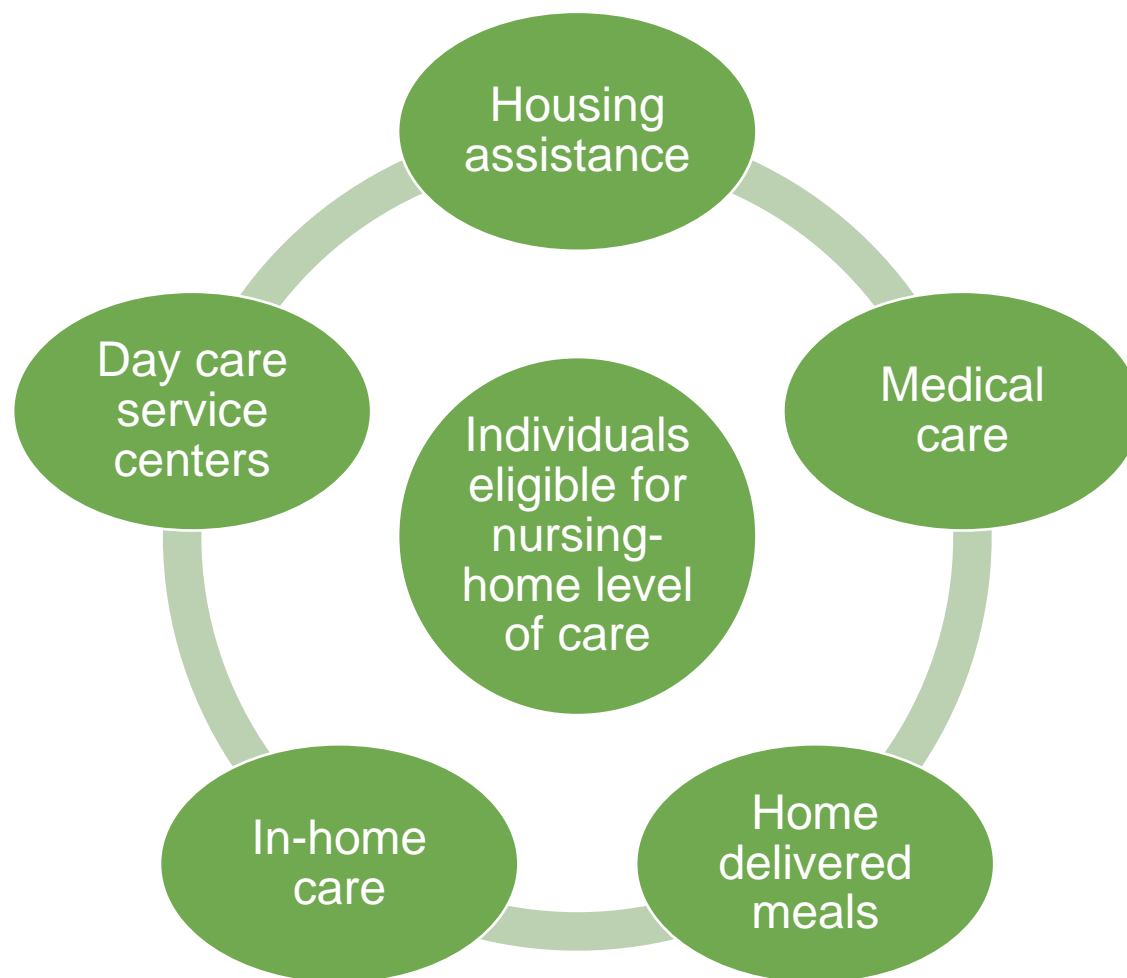
PACE was developed in the 1970s by On Lok, a nonprofit network that serves older adults in San Francisco.

- Portland's Providence ElderPlace served as pilot site for PACE expansion.
- Oregon has offered PACE in some areas of the state since 1990.
- Congress added PACE as a Medicaid option for states in 1997.
- APD has and continues to support PACE organizations.

Model

PACE is a Medicare and Medicaid program.

- Offers array of health and wellness services in an all-inclusive service model.
- Operates in more than 30 states and serves about 55,000 people.



Eligibility

PACE participants are:

- 55 years old or older
- Living in a PACE service area
- Able to reside safely in the community
- Assessed at nursing facility level of care, which is Service Priority Level (SPL) 1-13

PACE serves consumers living at home or in care settings like adult day centers, Community Based Care (CBC) facilities and nursing homes.



PACE provides wraparound services

Medical equipment +
supplies

Medical care and Part D
coverage

Medical clinic services

Palliative care

Specialty medical care

Therapeutic services



Mental and behavioral
health services

Dental care

Social work

Therapeutic recreation

Transportation

Emergency medical
services

Rates

- Providers are capitated to provide all services and supports:
 - Oregon Health Plan
 - Medicaid long-term services and supports
- Rates are no more than what it costs the state to serve similar consumers.
 - Specific to the region or PACE organization
- Rates vary by Medicare or Medicaid coverage:
 - Dual eligible (Medicare and Medicaid) – Medicaid rate is less
 - Medicaid only – State pays a higher amount
 - Medicare only – individual pays the difference
- New organizations' rates may be lower if they serve individuals with lower levels of need



Performance payments

Providence ElderPlace (PEP), and soon AllCare, receive performance payments when they reach specific outcome targets.

- Current PEP measures are:
 - Access to pneumonia immunizations
 - Access to dementia specific medications
 - COVID-19 vaccination access
 - Increase in number of participants who enroll while living in an in-home setting
 - Percentage of consumers with whom care team has had conversation about their goals
- PEP may earn up to 2.5% of the upper payment by meeting measures across its enrolled population.
 - Additional 2.5% if it meets the same targets for ALL race/ ethnicity categories
- Measures are specific to the PACE organization.
 - May be changed to address areas that need improvement or to address emerging issues



Providers

Oregon PACE providers are:

- **Providence ElderPlace**
 - Serves all of Multnomah and Clatsop counties and parts of Washington, Tillamook and Clackamas counties.
 - 1,696 participants
- **AllCare PACE**
 - Serves parts of Jackson and Josephine counties through a Health and Social Center located in Grants Pass.
 - 49 participants





Expansion

APD supports program expansion statewide.

- Multiple organizations interested in serving I-5 corridor.
- APD determined it is in best interest of the entire APD system, especially consumers, to not have multiple PACE organizations serving the same areas:
 - Organizations “competing” for limited long-term services and supports providers.
 - Confusion for local office staff.
 - Financial viability for the new PACE organizations.

Procurement process

ODHS follows DAS rules to ensure a fair and open procurement.

- Procurement expected to open Summer 2022.
 - Vendor criteria:
 - ✓ Service equity.
 - ✓ Expanded coverage areas (i.e., not just urban areas).
 - ✓ Operational within 365 days.
- Providers will:
 - Select open service areas (i.e., zip codes).
 - Define services.
- If multiple providers select the same service areas, the highest scored proposal receives the contract.

