

Monthly Caseload Forecast Variance Report  
 Department of Human Services  
 Child Welfare

MARCH 2020

Data for October 2019 are the most recent 'final actuals' as of the March 2020 monthly update. The Total Child Welfare caseload for October 2019 is 0.9 percent lower than the Fall 2019 forecast.

**Adoption Assistance**

Month	Actual	Fall 2019 Forecast	Over/Under Forecast	%
Jun-19	10,584	10,581	3	0.0%
Jul-19	10,590	10,590	-	0.0%
Aug-19	10,617	10,581	36	0.3%
Sep-19	10,615	10,579	36	0.3%
Oct-19	10,624	10,578	46	0.4%
Nov-19	10,605	10,576	29	0.3%

**Guardianship Assistance**

Month	Actual	Fall 2019 Forecast	Over/Under Forecast	%
Jun-19	2,194	2,193	1	0.0%
Jul-19	2,191	2,204	-13	-0.6%
Aug-19	2,200	2,211	-11	-0.5%
Sep-19	2,219	2,218	1	0.0%
Oct-19	2,221	2,224	-3	-0.1%
Nov-19	2,210	2,231	-21	-0.9%

**Out of Home Care**

Month	Actual	Fall 2019 Forecast	Over/Under Forecast	%
Jun-19	6,946	6,927	19	0.3%
Jul-19	6,885	6,915	-30	-0.4%
Aug-19	6,839	6,903	-64	-0.9%
Sep-19	6,807	6,883	-76	-1.1%
Oct-19	6,740	6,871	-131	-1.9%
Nov-19	6,653	6,854	-201	-2.9%

**Child-In-Home**

Month	Actual	Fall 2019 Forecast	Over/Under Forecast	%
Jun-19	1,458	1,436	22	1.5%
Jul-19	1,528	1,443	85	5.9%
Aug-19	1,431	1,450	-19	-1.3%
Sep-19	1,329	1,485	-156	-10.5%
Oct-19	1,389	1,497	-108	-7.2%
Nov-19	1,357	1,531	-174	-11.4%

**Total Child Welfare**

Month	Actual	Fall 2019 Forecast	Over/Under Forecast	%
Jun-19	21,182	21,137	45	0.2%
Jul-19	21,194	21,152	42	0.2%
Aug-19	21,087	21,145	-58	-0.3%
Sep-19	20,970	21,165	-195	-0.9%
Oct-19	20,974	21,170	-196	-0.9%
Nov-19	20,825	21,192	-367	-1.7%

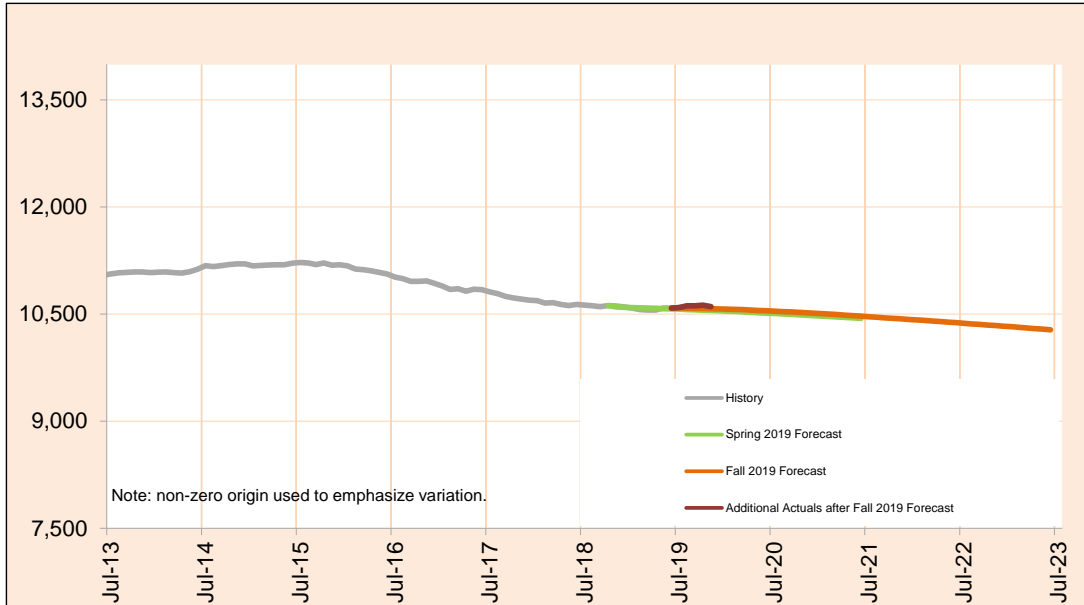
*The last month of "actuals" is a preliminary estimate and subject to change.*

Monthly Caseload Forecast Variance Report  
 Department of Human Services  
 Child Welfare

MARCH 2020

**Adoption Assistance**

Adoption Assistance provides support to help remove financial barriers to achieving and sustaining adoptions for special needs children. This can include payments and/or non-cash assistance such as medical benefits.



Month	Actual	Fall 2019 Forecast	Over/Under Forecast (Fall 2019)		Spring 2019 Forecast	Over/Under Forecast (Spring 2019)	
<i>Apr-19</i>	10,557	-	-	-	10,581	-24	-0.2%
<i>May-19</i>	10,586	-	-	-	10,577	9	0.1%
<i>Jun-19</i>	10,584	10,581	3	0.0%	10,572	12	0.1%
<i>Jul-19</i>	10,590	10,590	0	0.0%	10,568	22	0.2%
<i>Aug-19</i>	10,617	10,581	36	0.3%	10,564	53	0.5%
<i>Sep-19</i>	10,615	10,579	36	0.3%	10,559	56	0.5%
<i>Oct-19</i>	10,624	10,578	46	0.4%	10,555	69	0.7%
<i>Nov-19</i>	10,605	10,576	29	0.3%	10,551	54	0.5%
<i>Dec-19</i>	-	10,573	-	-	10,546	-	-
<i>Jan-20</i>	-	10,569	-	-	10,542	-	-
<i>Feb-20</i>	-	10,566	-	-	10,537	-	-
<i>Mar-20</i>	-	10,562	-	-	10,531	-	-
<i>Apr-20</i>	-	10,557	-	-	10,525	-	-

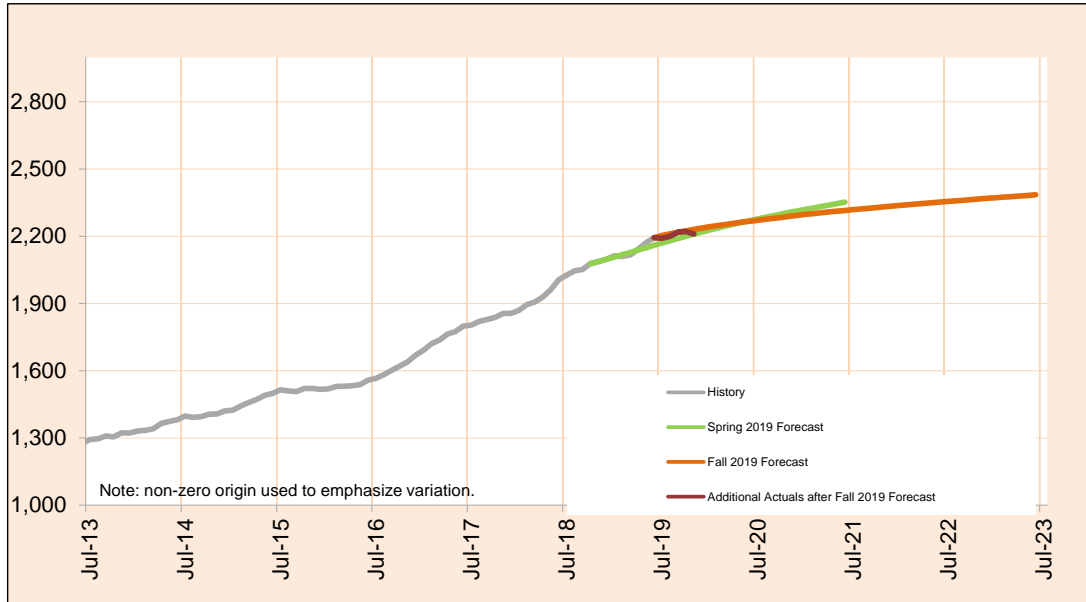
*Actuals for month shown in italics are preliminary and subject to change.*

Monthly Caseload Forecast Variance Report  
 Department of Human Services  
 Child Welfare

MARCH 2020

**Guardianship Assistance**

Subsidized Guardianship provides an option for individuals who do not wish to adopt but would like to offer a permanent home for children who would otherwise be in foster care.



Month	Actual	Fall 2019 Forecast	Over/Under Forecast (Fall 2019)		Spring 2019 Forecast	Over/Under Forecast (Spring 2019)	
<i>Apr-19</i>	2,143	-	-	-	2,139	4	0.2%
<i>May-19</i>	2,172	-	-	-	2,149	23	1.1%
<i>Jun-19</i>	2,194	2,193	1	0.0%	2,160	34	1.6%
<i>Jul-19</i>	2,191	2,204	-13	-0.6%	2,170	21	1.0%
<i>Aug-19</i>	2,200	2,211	-11	-0.5%	2,180	20	0.9%
<i>Sep-19</i>	2,219	2,218	1	0.0%	2,190	29	1.3%
<i>Oct-19</i>	2,221	2,224	-3	-0.1%	2,200	21	1.0%
<i>Nov-19</i>	2,210	2,231	-21	-0.9%	2,210	0	0.0%
<i>Dec-19</i>	-	2,237	-	-	2,219	-	-
<i>Jan-20</i>	-	2,243	-	-	2,228	-	-
<i>Feb-20</i>	-	2,248	-	-	2,237	-	-
<i>Mar-20</i>	-	2,253	-	-	2,246	-	-
<i>Apr-20</i>	-	2,258	-	-	2,254	-	-

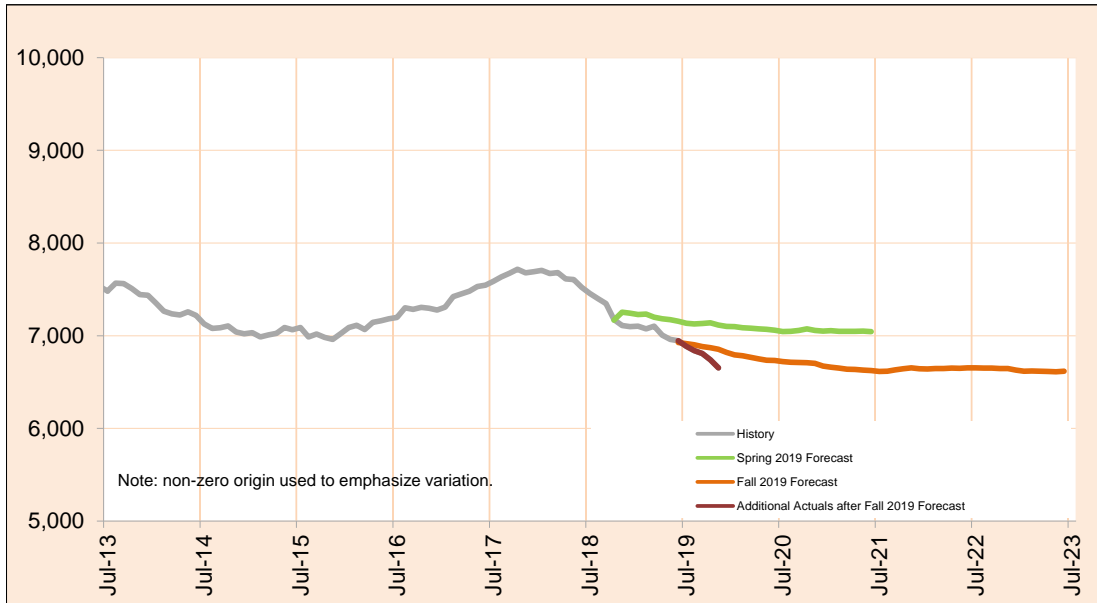
Actuals for months shown in italics are preliminary and subject to change.

Monthly Caseload Forecast Variance Report  
 Department of Human Services  
 Child Welfare

MARCH 2020

**Out of Home Care**

Foster Care provides temporary care for children who cannot be safely cared for by their birth parents. These counts also include shelter and residential care.



Month	Actual	Fall 2019 Forecast	Over/Under Forecast (Fall 2019)		Spring 2019 Forecast	Over/Under Forecast (Spring 2019)	
<i>Apr-19</i>	<i>7,005</i>	-	-	-	7,183	-178	-2.5%
<i>May-19</i>	<i>6,961</i>	-	-	-	7,173	-212	-3.0%
<i>Jun-19</i>	<i>6,946</i>	6,927	19	0.3%	7,155	-209	-2.9%
<i>Jul-19</i>	<i>6,885</i>	6,915	-30	-0.4%	7,135	-250	-3.5%
<i>Aug-19</i>	<i>6,839</i>	6,903	-64	-0.9%	7,128	-289	-4.1%
<i>Sep-19</i>	<i>6,807</i>	6,883	-76	-1.1%	7,131	-324	-4.5%
<i>Oct-19</i>	<i>6,740</i>	6,871	-131	-1.9%	7,139	-399	-5.6%
<i>Nov-19</i>	<i>6,653</i>	6,854	-201	-2.9%	7,115	-462	-6.5%
<i>Dec-19</i>	-	6,819	-	-	7,101	-	-
<i>Jan-20</i>	-	6,793	-	-	7,099	-	-
<i>Feb-20</i>	-	6,783	-	-	7,085	-	-
<i>Mar-20</i>	-	6,767	-	-	7,080	-	-
<i>Apr-20</i>	-	6,750	-	-	7,074	-	-

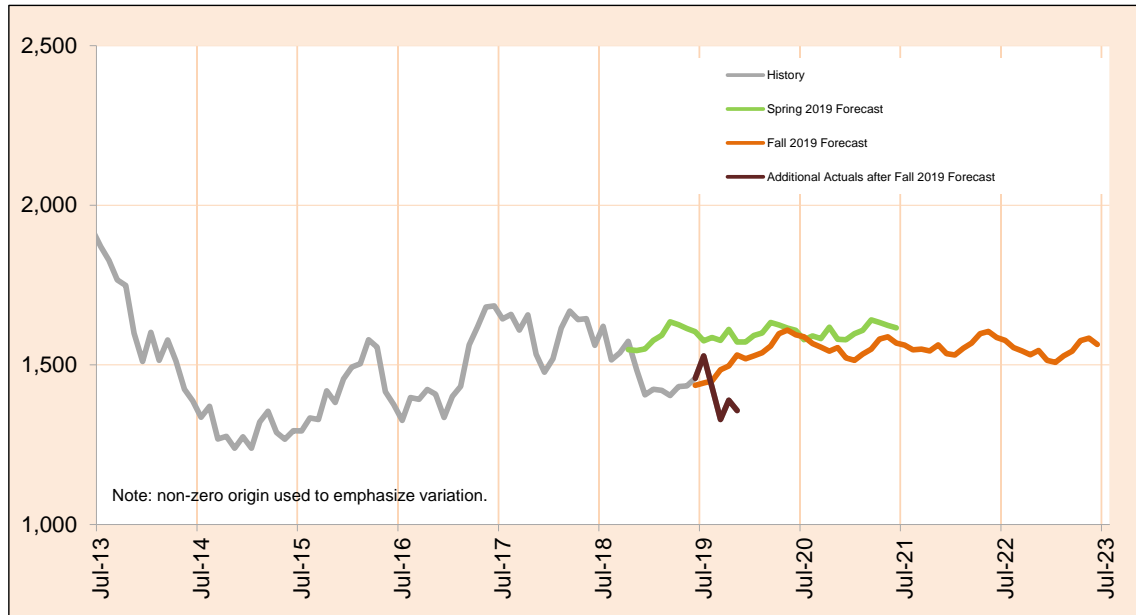
*Actuals for months shown in italics are preliminary and subject to change.*

Monthly Caseload Forecast Variance Report  
 Department of Human Services  
 Child Welfare

MARCH 2020

**Child-In-Home**

Child In-Home includes children who are on an open case but are in the physical custody of their parents.



Month	Actual	Fall 2019 Forecast	Over/Under Forecast (Fall 2019)	Spring 2019 Forecast	Over/Under Forecast (Spring 2019)
<b>Apr-19</b>	<i>1,432</i>	-	-	1,626	-194 -11.9%
<b>May-19</b>	<i>1,434</i>	-	-	1,614	-180 -11.2%
<b>Jun-19</b>	<i>1,458</i>	1,436	22 1.5%	1,604	-146 -9.1%
<b>Jul-19</b>	<i>1,528</i>	1,443	85 5.9%	1,575	-47 -3.0%
<b>Aug-19</b>	<i>1,431</i>	1,450	-19 -1.3%	1,586	-155 -9.8%
<b>Sep-19</b>	<i>1,329</i>	1,485	-156 -10.5%	1,577	-248 -15.7%
<b>Oct-19</b>	<i>1,389</i>	1,497	-108 -7.2%	1,611	-222 -13.8%
<b>Nov-19</b>	<i>1,357</i>	1,531	-174 -11.4%	1,572	-215 -13.7%
<b>Dec-19</b>	-	1,519	-	1,572	-
<b>Jan-20</b>	-	1,528	-	1,592	-
<b>Feb-20</b>	-	1,538	-	1,600	-
<b>Mar-20</b>	-	1,559	-	1,633	-
<b>Apr-20</b>	-	1,598	-	1,625	-

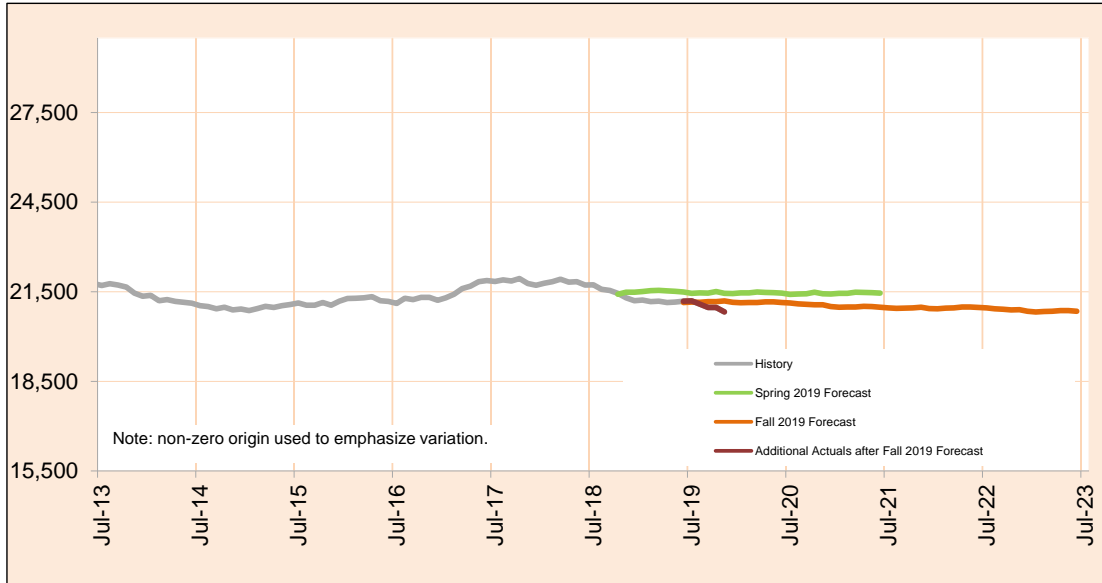
*Actuals for months shown in italics are preliminary and subject to change.*

Monthly Caseload Forecast Variance Report  
 Department of Human Services  
 Child Welfare

MARCH 2020

**Total Child Welfare**

The Child Welfare system provides services to protect abused and neglected children. These services include: Adoption Assistance, Subsidized Guardianship, Child In-Home and Foster Care. All counts shown in this monthly report are *number served*.



Month	Actual	Fall 2019 Forecast	Over/Under Forecast (Fall 2019)		Spring 2019 Forecast	Over/Under Forecast (Spring 2019)	
<b>Apr-19</b>	21,137	-	-	-	21,529	-392	-1.8%
<b>May-19</b>	21,153	-	-	-	21,513	-360	-1.7%
<b>Jun-19</b>	21,182	21,137	45	0.2%	21,491	-309	-1.4%
<b>Jul-19</b>	21,194	21,152	42	0.2%	21,448	-254	-1.2%
<b>Aug-19</b>	21,087	21,145	-58	-0.3%	21,458	-371	-1.7%
<b>Sep-19</b>	20,970	21,165	-195	-0.9%	21,457	-487	-2.3%
<b>Oct-19</b>	20,974	21,170	-196	-0.9%	21,505	-531	-2.5%
<b>Nov-19</b>	<i>20,825</i>	21,192	-367	-1.7%	21,448	-623	-2.9%
<b>Dec-19</b>	-	21,148	-	-	21,438	-	-
<b>Jan-20</b>	-	21,133	-	-	21,461	-	-
<b>Feb-20</b>	-	21,135	-	-	21,459	-	-
<b>Mar-20</b>	-	21,141	-	-	21,490	-	-
<b>Apr-20</b>	-	21,163	-	-	21,478	-	-

*Actuals for months shown in italics are preliminary and subject to change.*