

FEBRUARY 2021

**Note: The changes in public policy, behavior, and economics due to the COVID-19 crisis have created greater uncertainty than is usually experienced in a forecast cycle. Details concerning the assumptions underlying all forecasted caseload areas are contained in the Fall 2020 DHS-OHA Caseload Forecast report, which was released at the end of October.**

Family Supports caseload increased counts during April through August 2020 were due to incorrect claim authorizations. As per ODDS, this issue has been retroactively corrected.

**Case Management Enrollment**

Month	Actual	Fall 2020 Forecast	Over/Under Forecast	%
May-20	30,630	30,619	11	0.0%
Jun-20	30,832	30,760	72	0.2%
Jul-20	30,959	30,897	62	0.2%
Aug-20	31,066	31,029	37	0.1%
Sep-20	31,194	31,158	36	0.1%
Oct-20	31,283	31,282	1	0.0%

**Actuals: Case Mgmt. Only vs. with IDD Services-Total**

Month	Total	CM Only	CM w/ DD Svcs	% With DD Svcs
May-20	30,630	7,271	23,359	76.3%
Jun-20	30,832	7,321	23,511	76.3%
Jul-20	30,959	7,246	23,713	76.6%
Aug-20	31,066	7,323	23,743	76.4%
Sep-20	31,194	7,755	23,439	75.1%
Oct-20	31,283	7,803	23,480	75.1%

**ADULT I/DD Services**

**Actuals: Case Mgmt. Only vs. with IDD Services- Adult**

Month	Total	CM Only	CM w/ * DD Svcs	% With DD Svcs
May-20	20,903	3,488	17,415	83.3%
Jun-20	21,053	3,625	17,428	82.8%
Jul-20	21,148	3,672	17,476	82.6%
Aug-20	21,217	3,763	17,454	82.3%
Sep-20	21,293	4,063	17,230	80.9%
Oct-20	21,361	4,096	17,265	80.8%

**Actuals: Brokerage Enrollment and CDDP-Adult**

Month	Total	Brokerage Enrollment	CDDP
May-20	20,978	7,599	13,379
Jun-20	21,130	7,611	13,519
Jul-20	21,211	7,613	13,598
Aug-20	21,277	7,619	13,658
Sep-20	21,357	7,608	13,749
Oct-20	21,438	7,610	13,828

**Adult In-Home Support- Brokerage & CDDP**

Month	Actual	Fall 2020 Forecast	Over/Under Forecast	%
May-20	8,378	8,309	69	0.8%
Jun-20	8,551	8,316	235	2.8%
Jul-20	8,664	8,326	338	4.1%
Aug-20	8,791	8,341	450	5.4%
Sep-20	8,805	8,361	444	5.3%
Oct-20	8,886	8,386	500	6.0%

**24 Hour Residential Care**

Month	Actual	Fall 2020 Forecast	Over/Under Forecast	%
May-20	2,934	2,938	-4	-0.1%
Jun-20	2,946	2,941	5	0.2%
Jul-20	2,942	2,943	-1	0.0%
Aug-20	2,946	2,946	0	0.0%
Sep-20	2,957	2,949	8	0.3%
Oct-20	2,964	2,951	13	0.4%

**I/DD Foster Care**

Month	Actual	Fall 2020 Forecast	Over/Under Forecast	%
May-20	3,059	3,057	2	0.1%
Jun-20	3,070	3,060	10	0.3%
Jul-20	3,061	3,063	-2	-0.1%
Aug-20	3,066	3,065	1	0.0%
Sep-20	3,055	3,067	-12	-0.4%
Oct-20	3,051	3,070	-19	-0.6%

**Supported Living**

Month	Actual	Fall 2020 Forecast	Over/Under Forecast	%
May-20	733	732	1	0.1%
Jun-20	735	731	4	0.5%
Jul-20	741	732	9	1.2%
Aug-20	749	732	17	2.3%
Sep-20	752	731	21	2.9%
Oct-20	753	731	22	3.0%

**Employment & Day Support Services**

Month	Actual	Fall 2020 Forecast	Over/Under Forecast	%
May-20	2,308	2,260	48	2.1%
Jun-20	3,124	2,775	349	12.6%
Jul-20	3,170	3,024	146	4.8%
Aug-20	3,396	3,269	127	3.9%
Sep-20	3,542	3,375	167	4.9%
Oct-20	3,709	3,480	229	6.6%

**Transportation**

Month	Actual	Fall 2020 Forecast	Over/Under Forecast	%
May-20	5,236	5,200	36	0.7%
Jun-20	5,693	5,156	537	10.4%
Jul-20	5,598	5,259	339	6.4%
Aug-20	5,627	5,378	249	4.6%
Sep-20	5,739	5,602	137	2.4%
Oct-20	5,792	5,741	51	0.9%

\*Note: Italicized actuals are preliminary estimates.

FEBRUARY 2021

**I/DD Children Services**

**Actuals: Case Mgmt. Only vs. with IDD Services- Children**

Month	Total	CM Only	CM w/ DD Svcs	% With DD Svcs
May-20	9,727	3,783	5,944	61.1%
Jun-20	9,779	3,696	6,083	62.2%
Jul-20	9,811	3,574	6,237	63.6%
Aug-20	9,849	3,560	6,289	63.9%
Sep-20	9,901	3,692	6,209	62.7%
Oct-20	9,922	3,707	6,215	62.6%

**In-Home Support for Children**

Month	Actual	Fall 2020 Forecast	Over/Under Forecast	%
May-20	3,417	3,387	30	0.9%
Jun-20	3,602	3,422	180	5.3%
Jul-20	3,731	3,431	300	8.7%
Aug-20	3,856	3,439	417	12.1%
Sep-20	3,767	3,449	318	9.2%
Oct-20	3,836	3,463	373	10.8%

**Actuals: Children Intensive In-Home Services**

Month	Actual	Behavior	Medically Fragile	Medically Involved
May-20	370	98	90	182
Jun-20	368	98	90	180
Jul-20	365	96	90	179
Aug-20	364	95	90	179
Sep-20	361	93	91	177
Oct-20	361	92	94	175

**Actuals: Children Residential Care & Family Support**

Month	Children Res. Care	Family Support
May-20	170	820
Jun-20	173	649
Jul-20	178	697
Aug-20	181	234
Sep-20	180	13
Oct-20	180	11

**I/DD Foster Care**

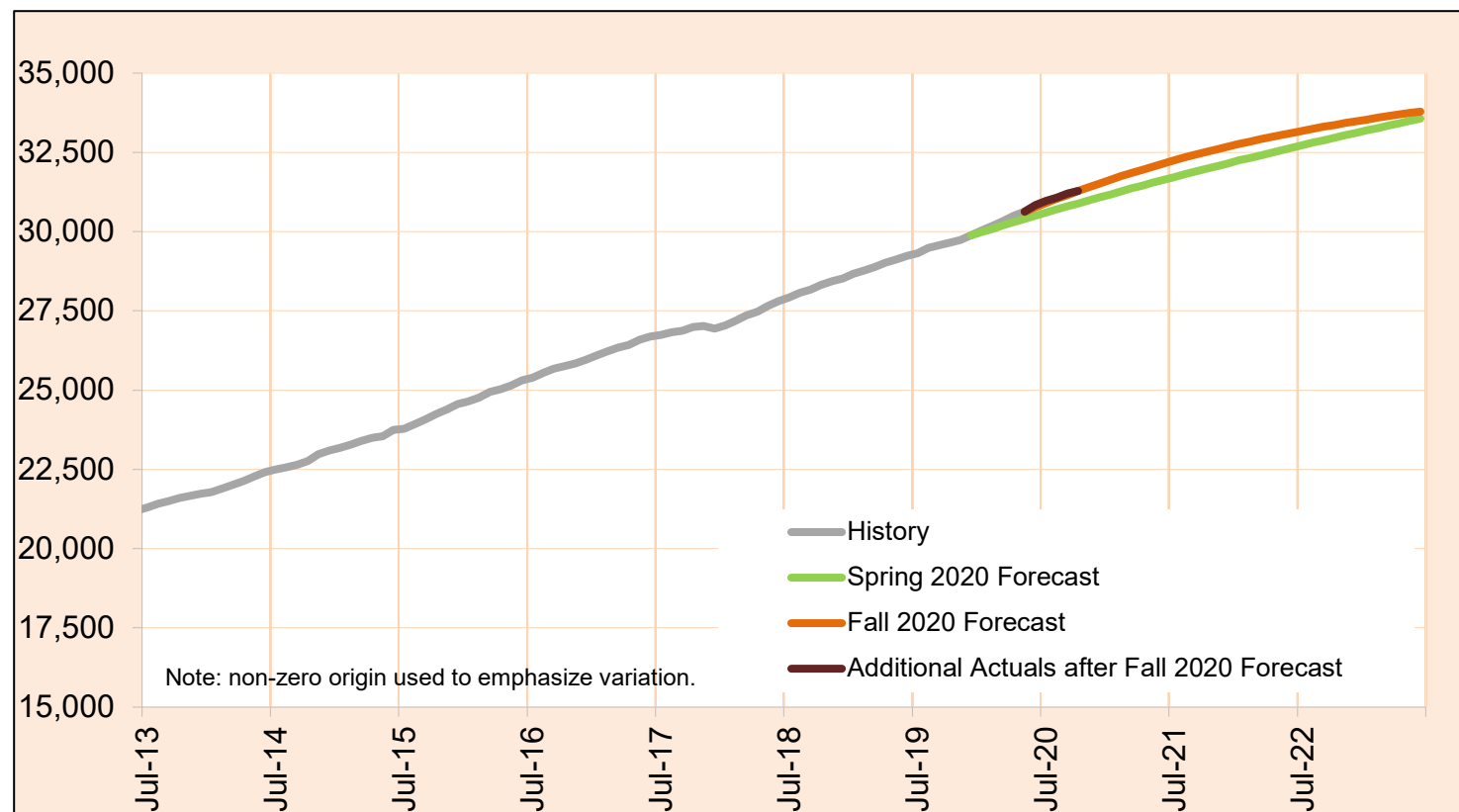
Month	Total	Fall 2020 Forecast	Over/Under Forecast	%
May-20	384	398	-14	-3.5%
Jun-20	381	398	-17	-4.3%
Jul-20	379	398	-19	-4.8%
Aug-20	369	399	-30	-7.5%
Sep-20	363	399	-36	-9.0%
Oct-20	356	399	-43	-10.8%

**Stabilization and Crisis Unit (Adult and Children)**

Month	Actual	Adults	Children
May-20	96	80	16
Jun-20	96	78	18
Jul-20	95	79	16
Aug-20	97	81	16
Sep-20	96	81	15
Oct-20	98	82	16

### Case Management Enrollment

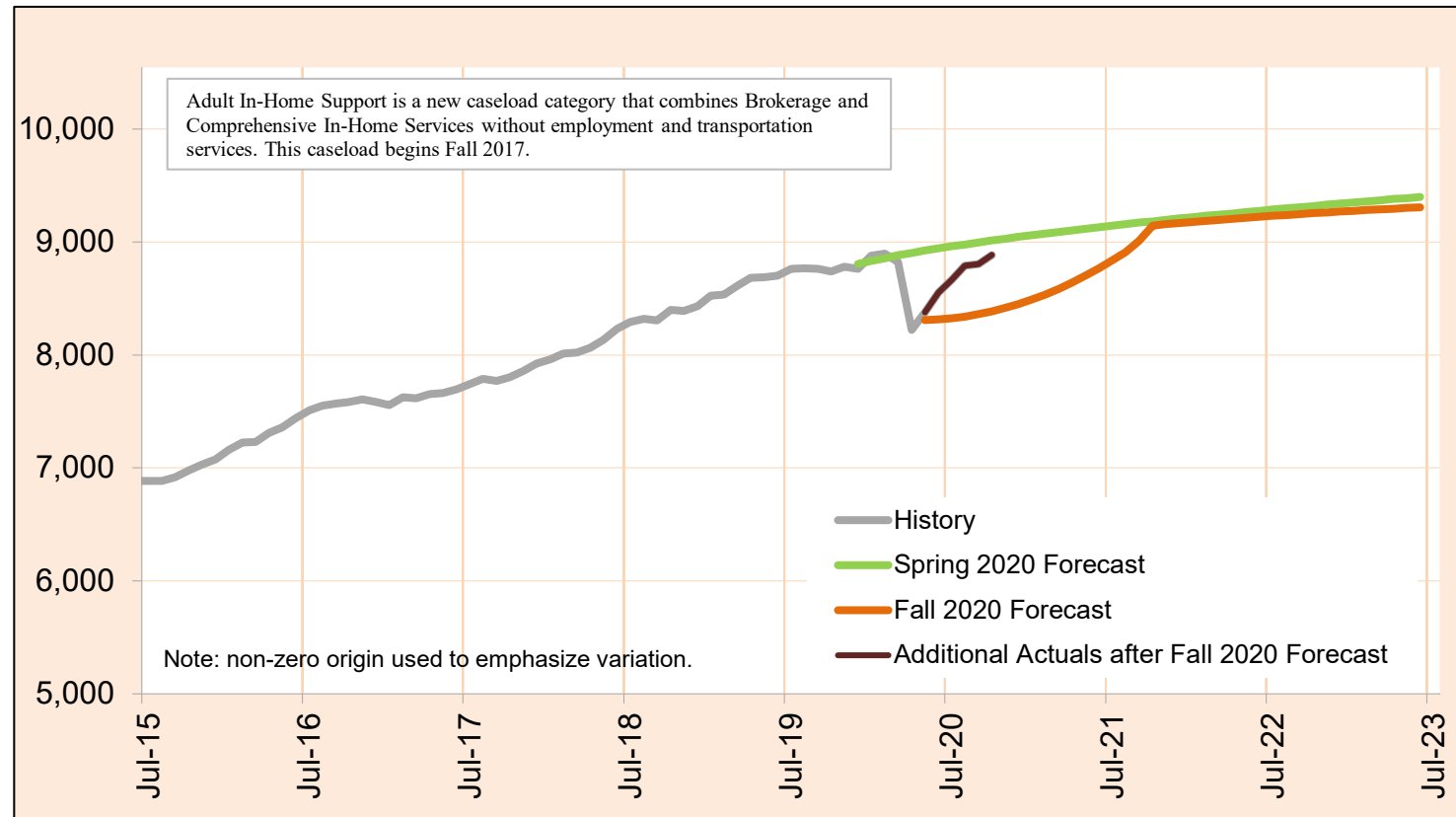
Case Management provides entry-level eligibility, evaluation and coordination services to individuals with developmental disabilities.



Month	Actual	Fall 2020 Forecast	Over/Under Forecast (Fall 2020)		Spring 2020 Forecast	Over/Under Forecast (Spring 2020)	
Nov-19	29,741	-	-	-	-	-	-
Dec-19	29,878	-	-	-	29,882	-4	0.0%
Jan-20	30,027	-	-	-	29,987	40	0.1%
Feb-20	30,185	-	-	-	30,091	94	0.3%
Mar-20	30,339	-	-	-	30,194	145	0.5%
Apr-20	30,500	-	-	-	30,296	204	0.7%
May-20	30,630	30,619	11	0.0%	30,397	233	0.8%
Jun-20	30,832	30,760	72	0.2%	30,497	335	1.1%
Jul-20	30,959	30,897	62	0.2%	30,597	362	1.2%
Aug-20	31,066	31,029	37	0.1%	30,695	371	1.2%
Sep-20	31,194	31,158	36	0.1%	30,793	401	1.3%
Oct-20	31,283	31,282	1	0.0%	30,889	394	1.3%

### Adult In-Home Support

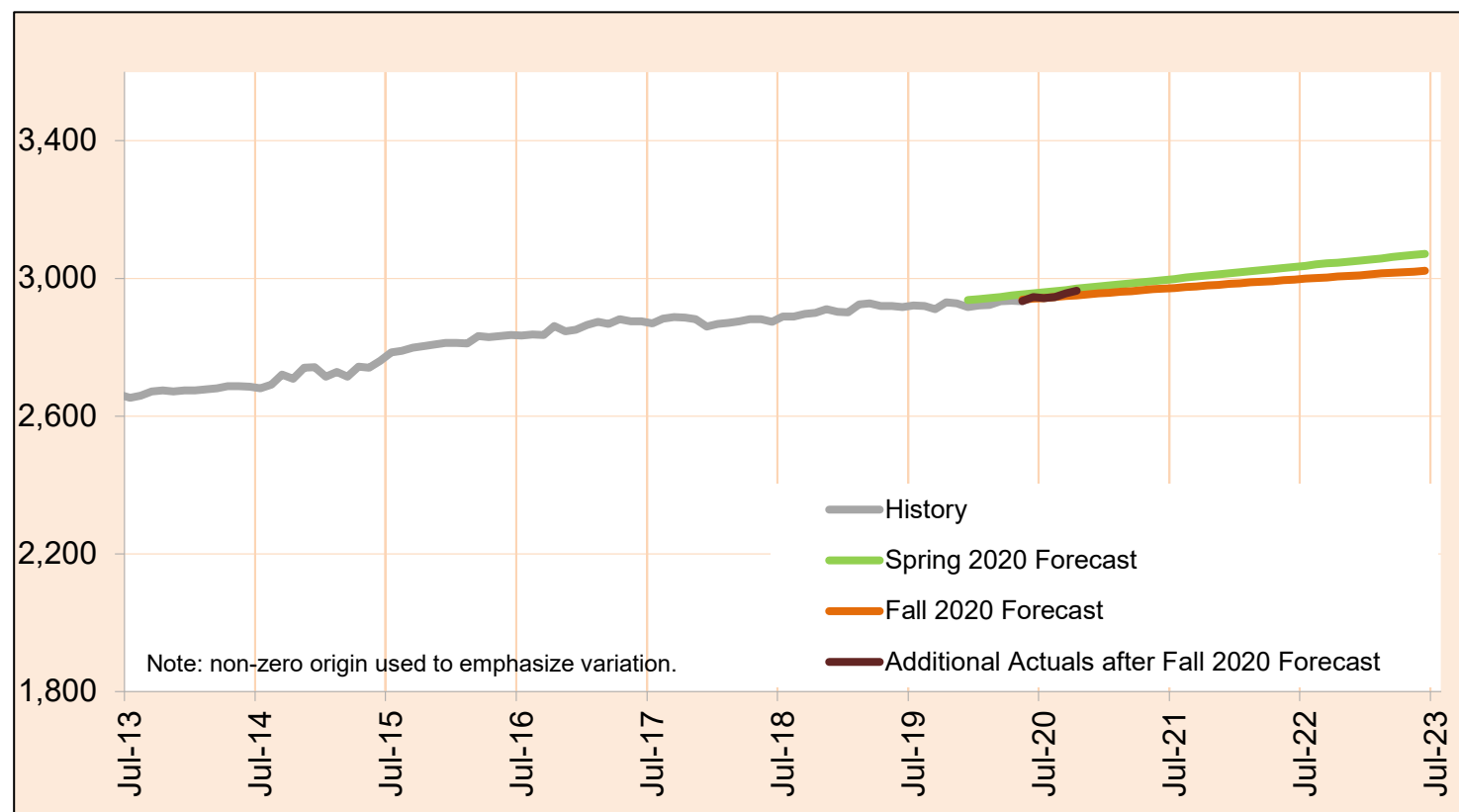
Adult In-Home Support helps individuals aged 18 years or older with intellectual and developmental disabilities to continue to live in their homes.



Month	Actual	Fall 2020 Forecast	Over/Under Forecast (Fall 2020)		Spring 2020 Forecast	Over/Under Forecast (Spring 2020)	
Nov-19	8,779	-	-	-	-	-	-
Dec-19	8,764	-	-	-	8,806	-42	-0.5%
Jan-20	8,879	-	-	-	8,833	46	0.5%
Feb-20	8,897	-	-	-	8,858	39	0.4%
Mar-20	8,824	-	-	-	8,882	-58	-0.7%
Apr-20	8,224	-	-	-	8,904	-680	-7.6%
May-20	8,378	8,309	69	0.8%	8,924	-546	-6.1%
Jun-20	8,551	8,316	235	2.8%	8,943	-392	-4.4%
Jul-20	8,664	8,326	338	4.1%	8,962	-298	-3.3%
Aug-20	8,791	8,341	450	5.4%	8,979	-188	-2.1%
Sep-20	8,805	8,361	444	5.3%	8,997	-192	-2.1%
Oct-20	8,886	8,386	500	6.0%	9,013	-127	-1.4%

### 24 hours Residential Care

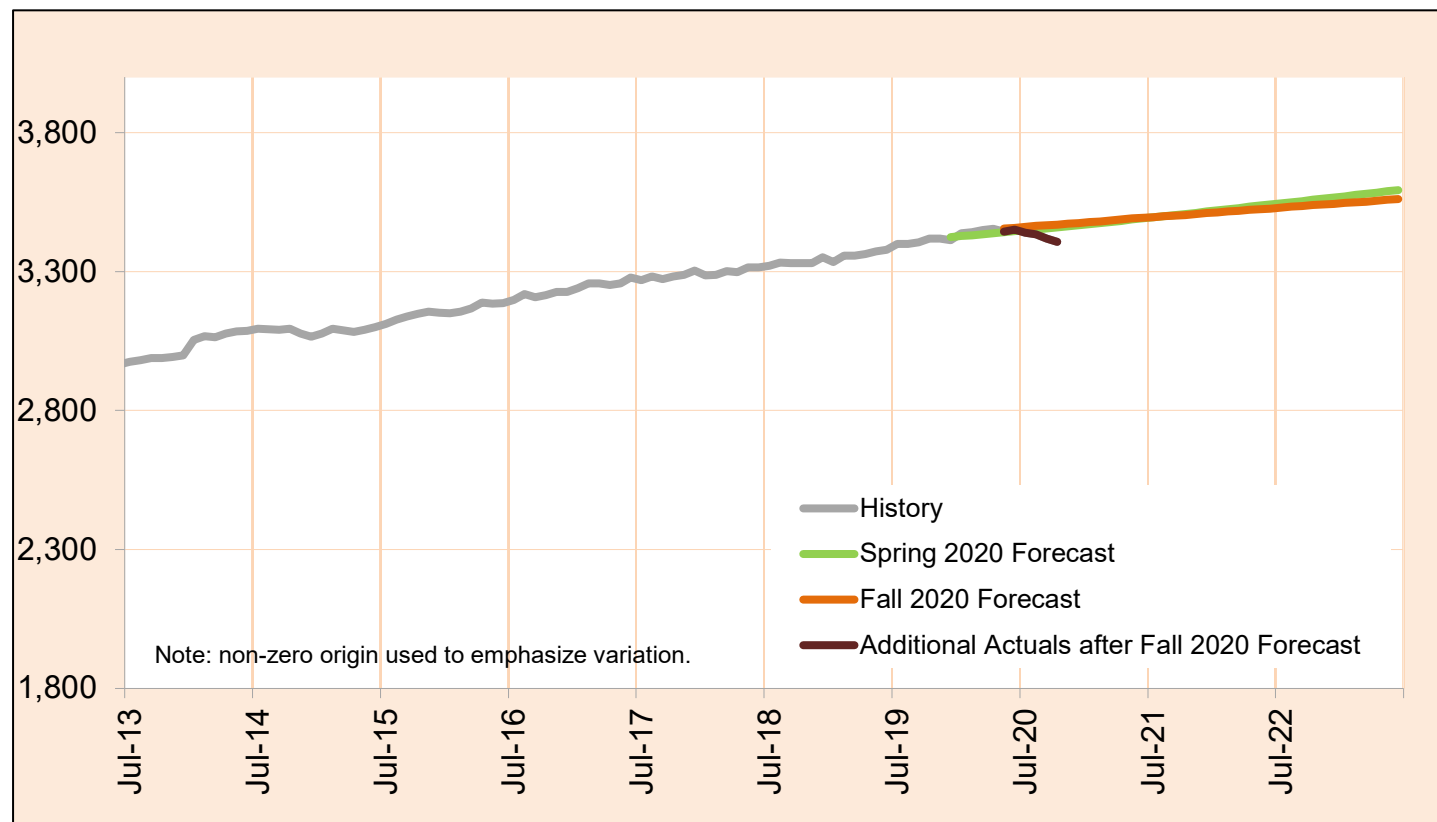
24-Hour Residential Care provides 24-hour supervised care, training and support services in neighborhood homes.



Month	Actual	Fall 2020 Forecast	Over/Under Forecast (Fall 2020)		Spring 2020 Forecast	Over/Under Forecast (Spring 2020)	
Nov-19	2,928	-	-	-	-	-	-
Dec-19	2,916	-	-	-	2,937	-21	-0.7%
Jan-20	2,921	-	-	-	2,940	-19	-0.6%
Feb-20	2,922	-	-	-	2,943	-21	-0.7%
Mar-20	2,933	-	-	-	2,946	-13	-0.4%
Apr-20	2,935	-	-	-	2,950	-15	-0.5%
May-20	2,934	2,938	-4	-0.1%	2,953	-19	-0.6%
Jun-20	2,946	2,941	5	0.2%	2,956	-10	-0.3%
Jul-20	2,942	2,943	-1	0.0%	2,959	-17	-0.6%
Aug-20	2,946	2,946	0	0.0%	2,963	-17	-0.6%
Sep-20	2,957	2,949	8	0.3%	2,966	-9	-0.3%
Oct-20	2,964	2,951	13	0.4%	2,970	-6	-0.2%

### Total I/DD Foster Care

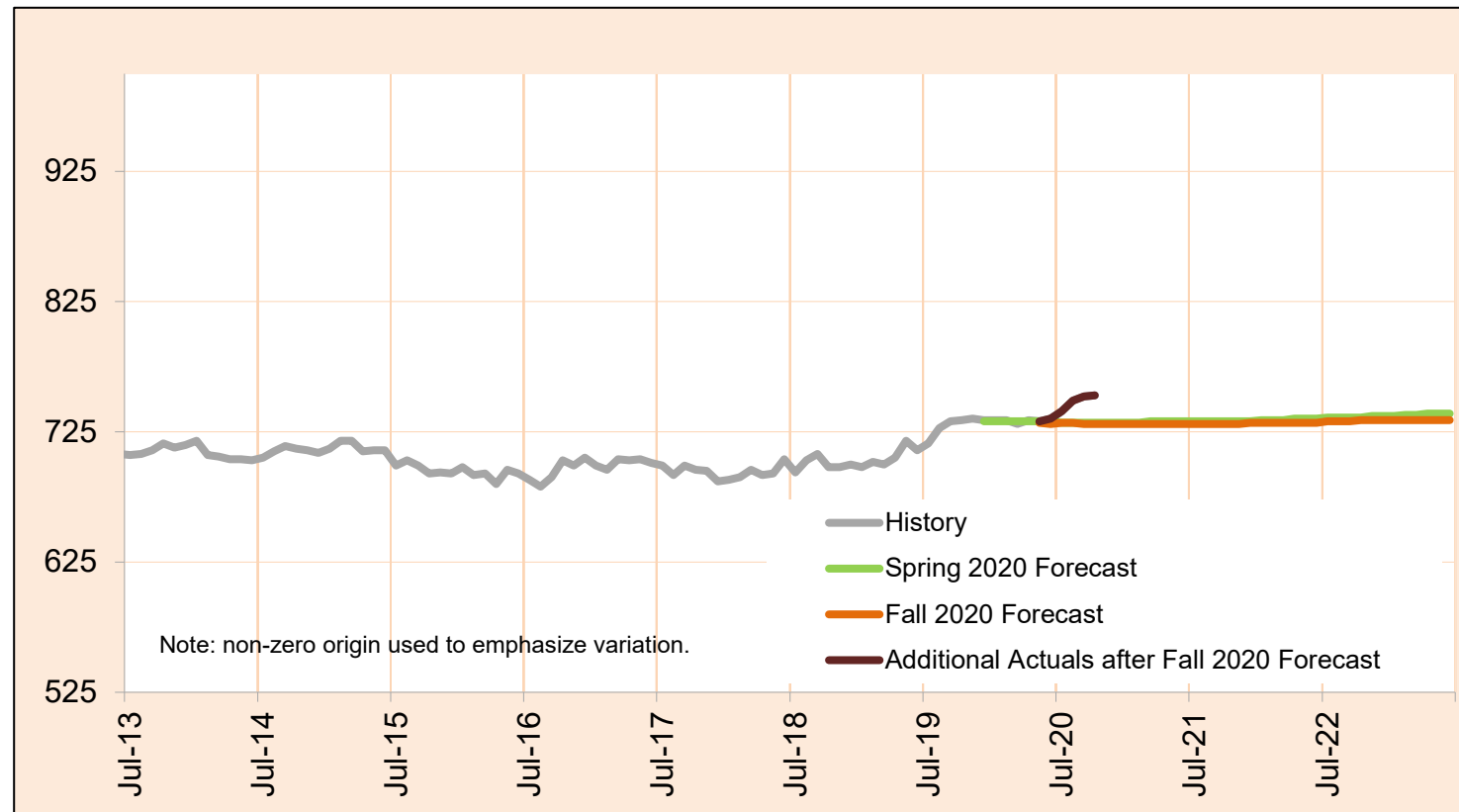
Foster Care provides 24-hour foster home care, supervision, the provision of room and board, and assistance with the activities of daily living for both adults and children.



Month	Actual	Fall 2020 Forecast	Over/Under Forecast (Fall 2020)		Spring 2020 Forecast	Over/Under Forecast (Spring 2020)	
Nov-19	3,419	-	-	-	-	-	-
Dec-19	3,413	-	-	-	3,424	-11	-0.3%
Jan-20	3,438	-	-	-	3,428	10	0.3%
Feb-20	3,441	-	-	-	3,431	10	0.3%
Mar-20	3,450	-	-	-	3,434	16	0.5%
Apr-20	3,454	-	-	-	3,438	16	0.5%
May-20	3,443	3,455	-12	-0.3%	3,441	2	0.1%
Jun-20	3,451	3,458	-7	-0.2%	3,445	6	0.2%
Jul-20	3,440	3,461	-21	-0.6%	3,449	-9	-0.3%
Aug-20	3,435	3,464	-29	-0.8%	3,452	-17	-0.5%
Sep-20	3,418	3,466	-48	-1.4%	3,456	-38	-1.1%
Oct-20	3,407	3,469	-62	-1.8%	3,459	-52	-1.5%

### Supported Living

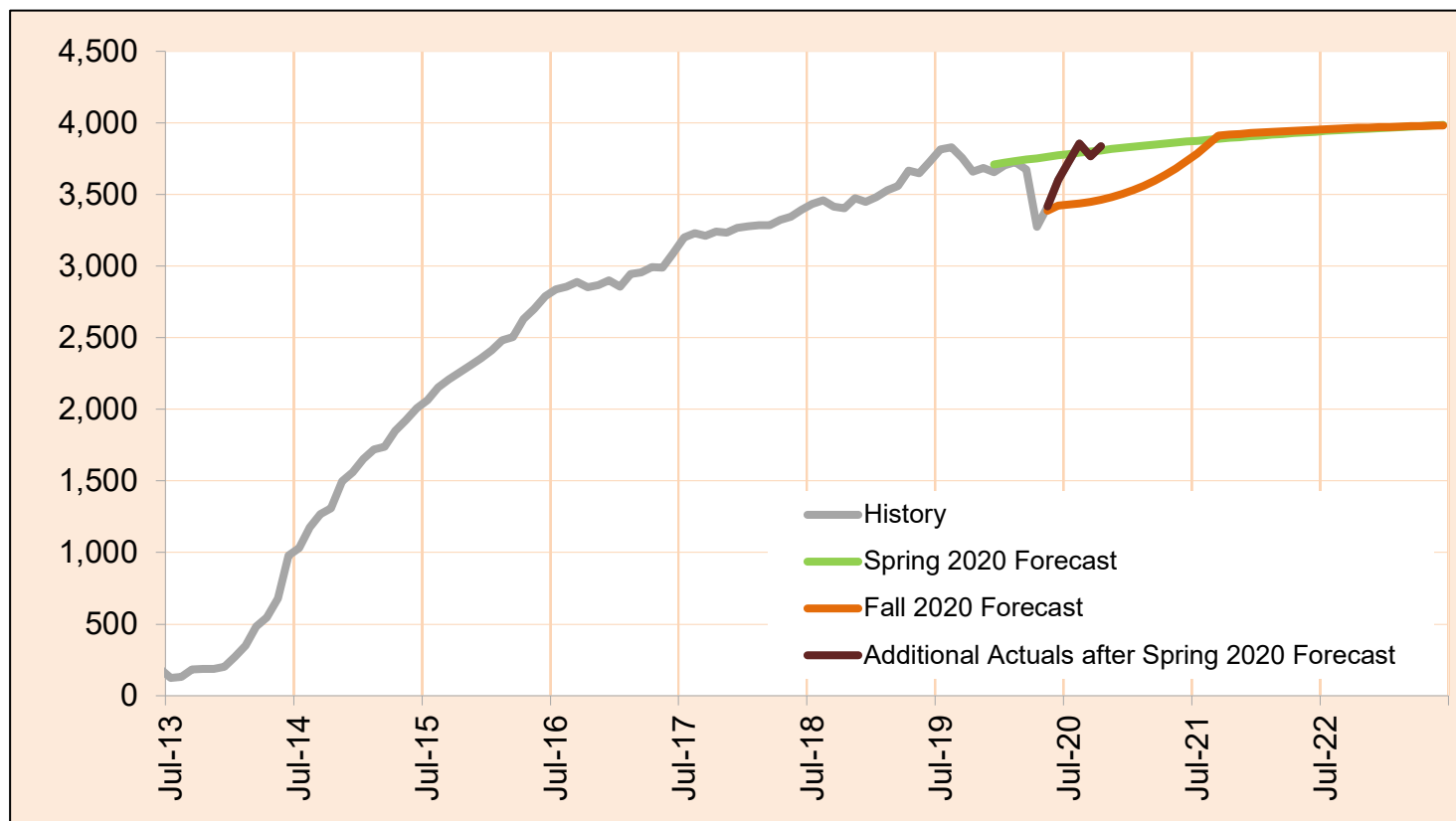
Supported Living provides individualized support services to clients in their own home based on their Individual Support Plan.



Month	Actual	Fall 2020 Forecast	Over/Under Forecast (Fall 2020)		Spring 2020 Forecast	Over/Under Forecast (Spring 2020)	
Nov-19	735	-	-	-	-	-	-
Dec-19	734	-	-	-	733	1	0.1%
Jan-20	734	-	-	-	733	1	0.1%
Feb-20	734	-	-	-	733	1	0.1%
Mar-20	731	-	-	-	733	-2	-0.3%
Apr-20	734	-	-	-	733	1	0.1%
May-20	733	732	1	0.1%	733	0	0.0%
Jun-20	735	731	4	0.5%	733	2	0.3%
Jul-20	741	732	9	1.2%	732	9	1.2%
Aug-20	749	732	17	2.3%	732	17	2.3%
Sep-20	752	731	21	2.9%	732	20	2.7%
Oct-20	753	731	22	3.0%	732	21	2.9%

### In-Home Support for Children

In-Home Support for Children (also known as Long-Term Support) provides services to individuals under the age of 18 years with Intellectual and Developmental Disabilities in the family home.



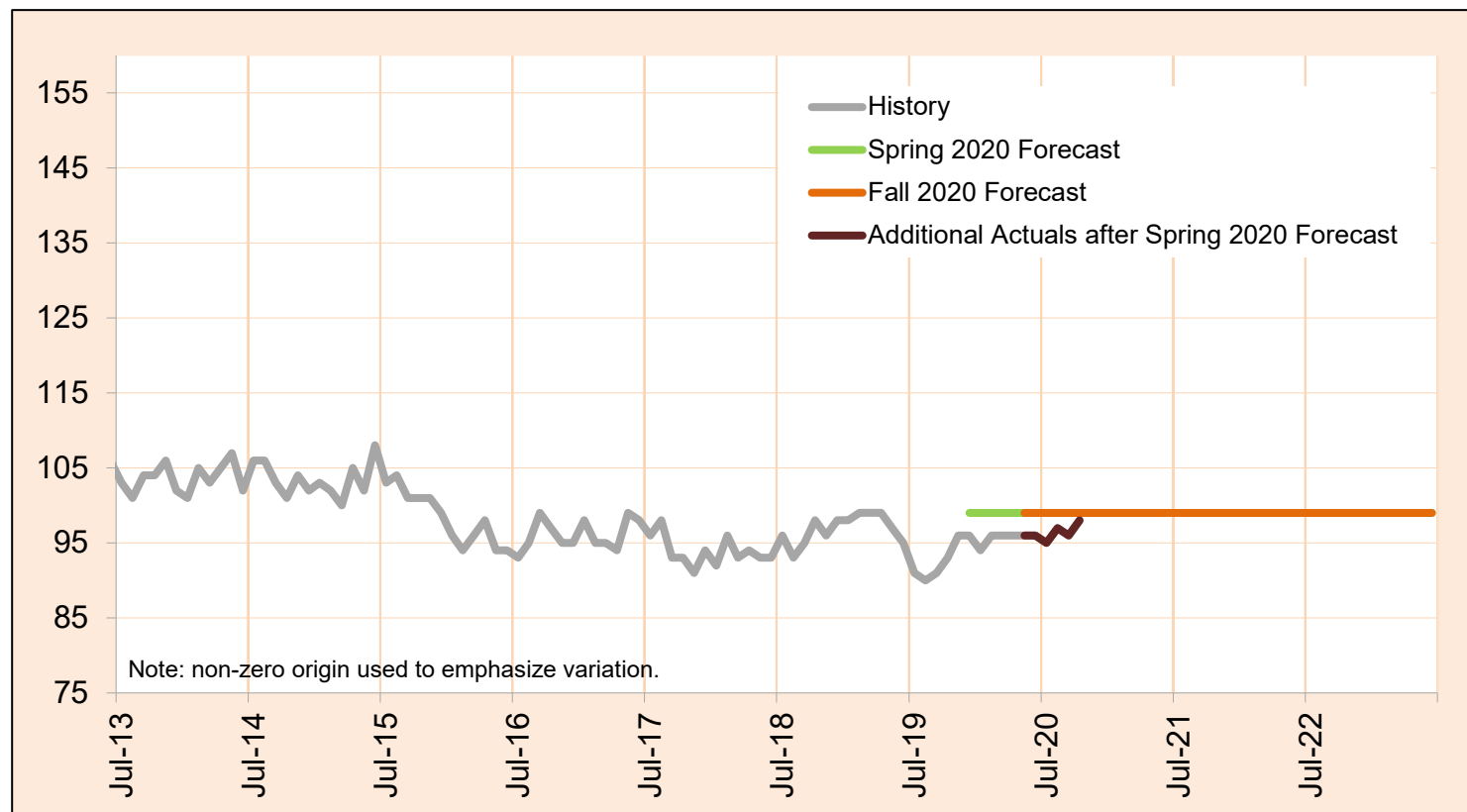
Month	Actual	Fall 2020 Forecast	Over/Under Forecast (Fall 2020)		Spring 2020 Forecast	Over/Under Forecast (Spring 2020)	
<b>Nov-19</b>	3,686	-	-	-	-	-	-
<b>Dec-19</b>	3,657	-	-	-	3,710	-53	-1.4%
<b>Jan-20</b>	3,703	-	-	-	3,721	-18	-0.5%
<b>Feb-20</b>	3,727	-	-	-	3,732	-5	-0.1%
<b>Mar-20</b>	3,673	-	-	-	3,743	-70	-1.9%
<b>Apr-20</b>	3,274	-	-	-	3,753	-479	-12.8%
<b>May-20</b>	3,417	3,387	30	0.9%	3,763	-346	-9.2%
<b>Jun-20</b>	3,602	3,422	180	5.3%	3,773	-171	-4.5%
<b>Jul-20</b>	3,731	3,431	300	8.7%	3,782	-51	-1.3%
<b>Aug-20</b>	3,856	3,439	417	12.1%	3,791	65	1.7%
<b>Sep-20</b>	3,767	3,449	318	9.2%	3,800	-33	-0.9%
<b>Oct-20</b>	3,836	3,463	373	10.8%	3,809	27	0.7%

Actuals shown in *Italics* are TNT aggregate data.



### Stabilization and Crisis Unit

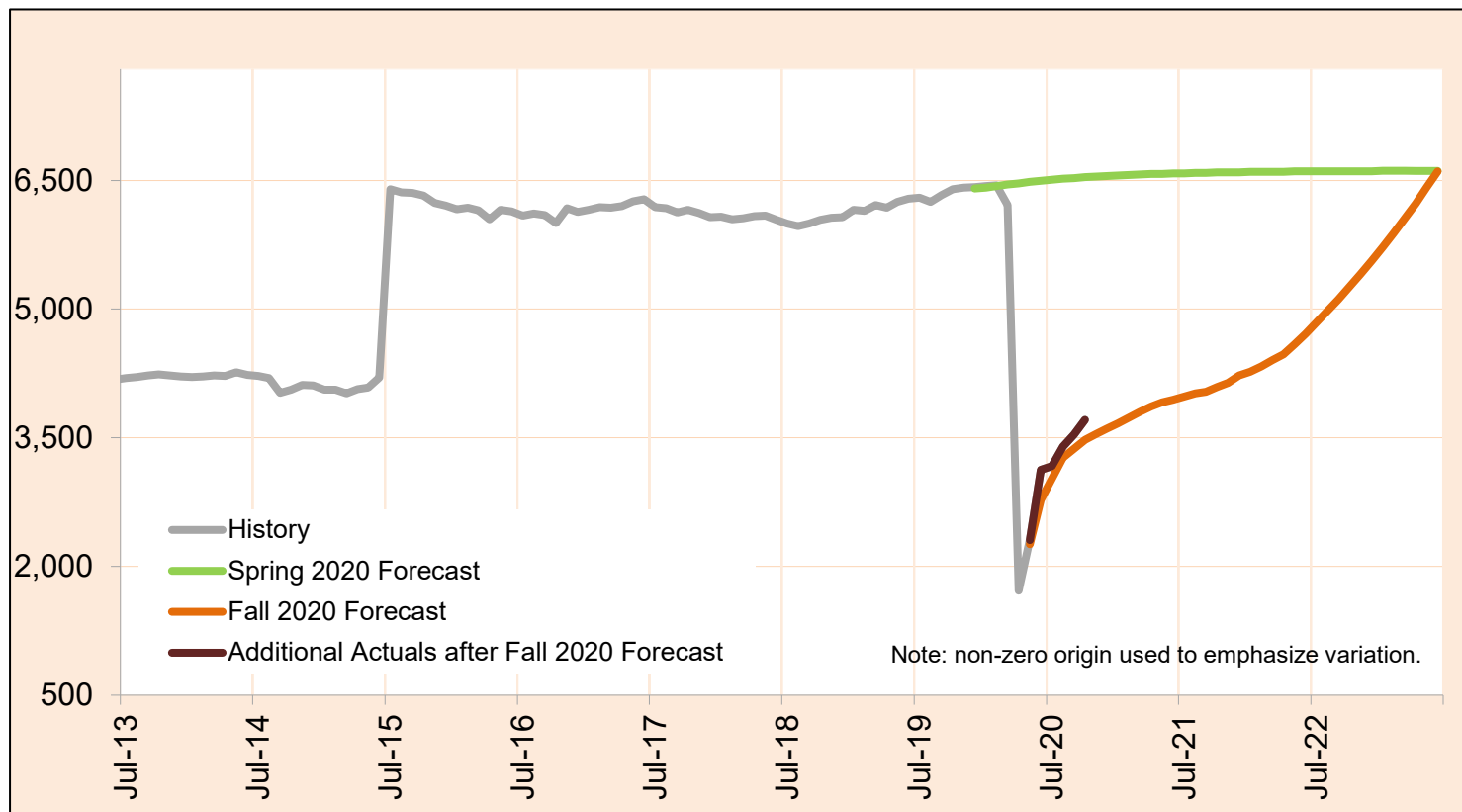
Stabilization and Crisis Unit (previously called State Operated Community Programs) offers safety net services and support to the most vulnerable, intensive, medically and behaviorally challenged I/DD clients when no other community based option is available to them. The program serves both adults and children.



Month	Actual	Fall 2020 Forecast	Over/Under Forecast (Fall 2020)		Spring 2020 Forecast	Over/Under Forecast (Spring 2020)	
Nov-19	96	-	-	-	-	-	-
Dec-19	96	-	-	-	99	-3	-3.0%
Jan-20	94	-	-	-	99	-5	-5.1%
Feb-20	96	-	-	-	99	-3	-3.0%
Mar-20	96	-	-	-	99	-3	-3.0%
Apr-20	96	-	-	-	99	-3	-3.0%
May-20	96	99	-3	-3.0%	99	-3	-3.0%
Jun-20	96	99	-3	-3.0%	99	-3	-3.0%
Jul-20	95	99	-4	-4.0%	99	-4	-4.0%
Aug-20	97	99	-2	-2.0%	99	-2	-2.0%
Sep-20	96	99	-3	-3.0%	99	-3	-3.0%
Oct-20	98	99	-1	-1.0%	99	-1	-1.0%

### Employment and Day Support Activities

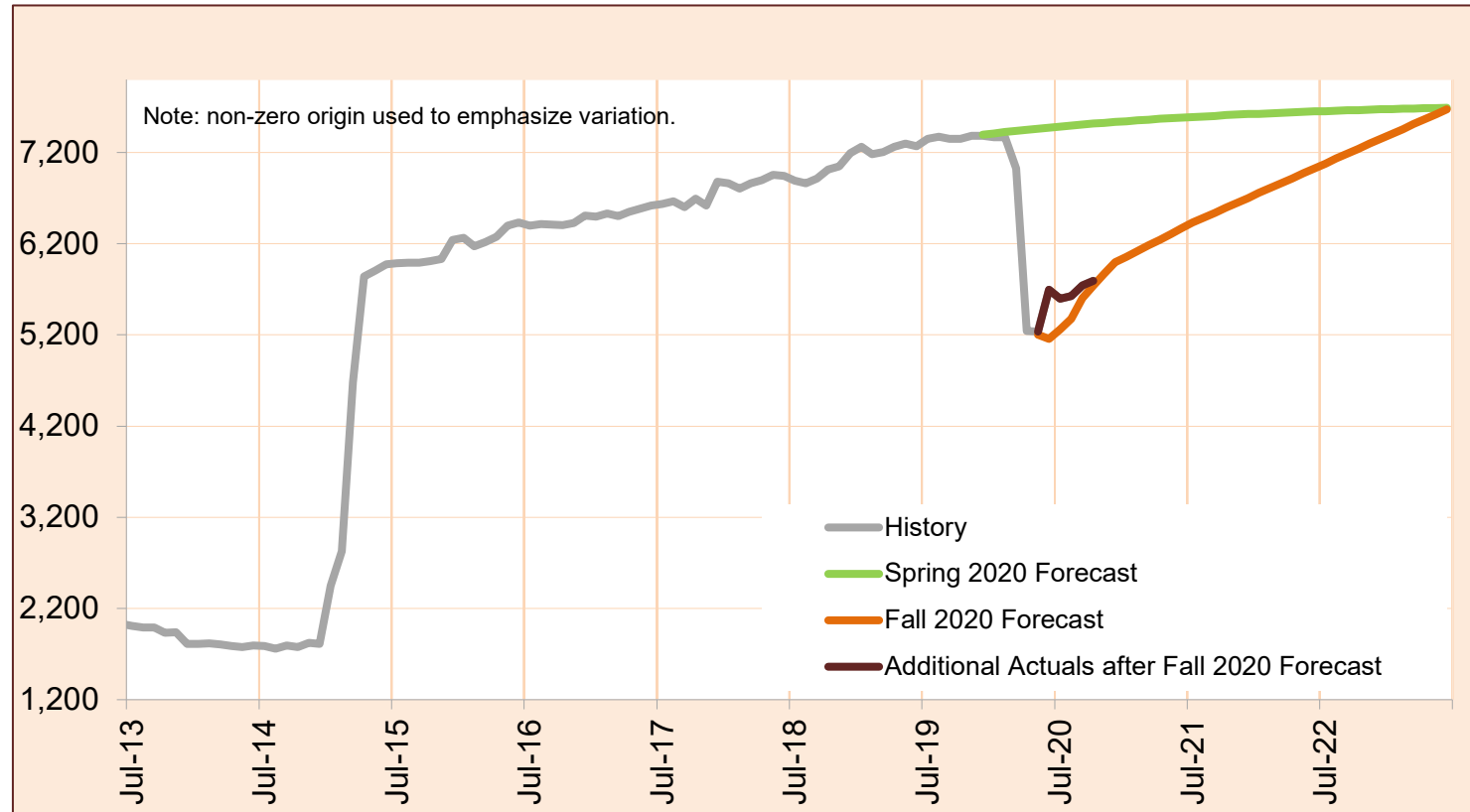
Employment provides paid work to DD clients in comprehensive 24-hour service, including the day support activities, away from home.



Month	Actual	Fall 2020 Forecast	Over/Under Forecast (Fall 2020)		Spring 2020 Forecast	Over/Under Forecast (Spring 2020)	
Nov-19	6,415	-	-	-	-	-	-
Dec-19	6,425	-	-	-	6,407	18	0.3%
Jan-20	6,434	-	-	-	6,420	14	0.2%
Feb-20	6,444	-	-	-	6,435	9	0.1%
Mar-20	6,216	-	-	-	6,453	-237	-3.7%
Apr-20	1,719	-	-	-	6,469	-4,750	-73.4%
May-20	2,308	2,260	48	2.1%	6,484	-4,176	-64.4%
Jun-20	3,124	2,775	349	12.6%	6,497	-3,373	-51.9%
Jul-20	3,170	3,024	146	4.8%	6,509	-3,339	-51.3%
Aug-20	3,396	3,269	127	3.9%	6,519	-3,123	-47.9%
Sep-20	3,542	3,375	167	4.9%	6,529	-2,987	-45.7%
Oct-20	3,709	3,480	229	6.6%	6,537	-2,828	-43.3%

### Transportation

Transportation service is provided to DD clients who participate in employment and community inclusion programs.



Month	Actual	Fall 2020 Forecast	Over/Under Forecast (Fall 2020)		Spring 2020 Forecast	Over/Under Forecast (Spring 2020)	
Nov-19	7,383	-	-	-	-	-	-
Dec-19	7,383	-	-	-	7,395	-12	-0.2%
Jan-20	7,366	-	-	-	7,410	-44	-0.6%
Feb-20	7,369	-	-	-	7,423	-54	-0.7%
Mar-20	7,025	-	-	-	7,437	-412	-5.5%
Apr-20	5,244	-	-	-	7,449	-2,205	-29.6%
May-20	5,236	5,200	36	0.7%	7,461	-2,225	-29.8%
Jun-20	5,693	5,156	537	10.4%	7,473	-1,780	-23.8%
Jul-20	5,598	5,259	339	6.4%	7,484	-1,886	-25.2%
Aug-20	5,627	5,378	249	4.6%	7,495	-1,868	-24.9%
Sep-20	5,739	5,602	137	2.4%	7,506	-1,767	-23.5%
Oct-20	5,792	5,741	51	0.9%	7,516	-1,724	-22.9%