

APRIL 2021

Note: The changes in public policy, behavior, and economics due to the COVID-19 crisis continue to create greater uncertainty than is usually experienced in a forecast cycle. As with the Fall 2020 forecast, the current forecast for Spring 2021 contains assumptions about operations and recovery patterns from COVID, some of which have changed from the prior forecast. Details concerning these assumptions will be contained in the Spring 2021 ODHS-OHA Caseload Forecast report, which will be released in early May.

The rollout of the new Integrated Eligibility (I.E.) system has led to instability in counts of some programs in Self-Sufficiency. In other cases, data were not available for this monthly update. As a result, data may be updated or revised in subsequent variance reports, as known database issues are addressed.

Total Temporary Assistance for Needy Families

Month	Actual	Spring 2021 Forecast	Over/Under Forecast	%
Oct-20	17,782	-	-	-
Nov-20	17,563	-	-	-
Dec-20	17,471	-	-	-
Jan-21	17,144	-	-	-
Feb-21	17,205	16,954	251	1.5%
Mar-21	16,593	16,819	-226	-1.3%

TANF: One-Parent

Month	Actual	Spring 2021 Forecast	Over/Under Forecast	%
Oct-20	14,967	-	-	-
Nov-20	14,724	-	-	-
Dec-20	14,542	-	-	-
Jan-21	14,243	-	-	-
Feb-21	14,265	14,140	125	0.9%
Mar-21	13,797	14,031	-234	-1.7%

TANF: Two-Parent

Month	Actual	Spring 2021 Forecast	Over/Under Forecast	%
Oct-20	2,815	-	-	-
Nov-20	2,839	-	-	-
Dec-20	2,929	-	-	-
Jan-21	2,901	-	-	-
Feb-21	2,940	2,814	126	4.5%
Mar-21	2,796	2,788	8	0.3%

TANF Employment Payments

Month	Actual	Spring 2021 Forecast	Over/Under Forecast	%
Oct-20	1,306	-	-	-
Nov-20	1,205	-	-	-
Dec-20	991	-	-	-
Jan-21	915	-	-	-
Feb-21	748	849	-101	-11.9%
Mar-21	759	979	-220	-22.5%

Temporary Assistance for Domestic Violence Survivors - with Payment (Families)¹

Month	Actual	Spring 2021 Forecast	Over/Under Forecast	%
Oct-20	225	-	-	-
Nov-20	306	-	-	-
Dec-20	448	-	-	-
Jan-21	536	-	-	-
Feb-21	741	106	635	599.1%
Mar-21	944	130	814	626.2%

Temporary Assistance for Domestic Violence Survivors - without Payment (Families)²

Month	Actual	Spring 2021 Forecast	Over/Under Forecast	%
Sep-20	808	-	-	-
Oct-20	795	-	-	-
Nov-20	-	771	-	-
Dec-20	-	690	-	-
Jan-21	-	621	-	-
Feb-21	-	556	-	-

Pre-SSI

Month	Actual	Spring 2021 Forecast	Over/Under Forecast	%
Oct-20	183	-	-	-
Nov-20	185	-	-	-
Dec-20	181	-	-	-
Jan-21	173	-	-	-
Feb-21	172	165	7	4.2%
Mar-21	167	166	1	0.6%

Total Supplemental Nutrition Assistance Programs

Month	Actual	Spring 2021 Forecast	Over/Under Forecast	%
Oct-20	394,013	-	-	-
Nov-20	407,881	-	-	-
Dec-20	422,498	-	-	-
Jan-21	430,252	-	-	-
Feb-21	431,669	429,270	2,399	0.6%
Mar-21	434,278	429,767	4,511	1.0%

APRIL 2021

SNAP: Aging and People with Disabilities

Month	Actual	Spring 2021 Forecast	Over/Under Forecast	%
Oct-20	135,773	-	-	-
Nov-20	138,895	-	-	-
Dec-20	146,108	-	-	-
Jan-21	147,577	-	-	-
Feb-21	151,470	147,319	4,151	2.8%
Mar-21	153,281	147,477	5,804	3.9%

SNAP: Self Sufficiency

Month	Actual	Spring 2021 Forecast	Over/Under Forecast	%
Oct-20	258,240	-	-	-
Nov-20	268,986	-	-	-
Dec-20	276,390	-	-	-
Jan-21	282,675	-	-	-
Feb-21	280,199	281,951	-1,752	-0.6%
Mar-21	280,997	282,290	-1,293	-0.5%

Employment Related Daycare (Families)

Month	Actual	Forecast Discontinued
Oct-20	7,542	
Nov-20	7,889	
Dec-20	8,033	
Jan-21	8,217	
Feb-21	8,385	
Mar-21	8,392	

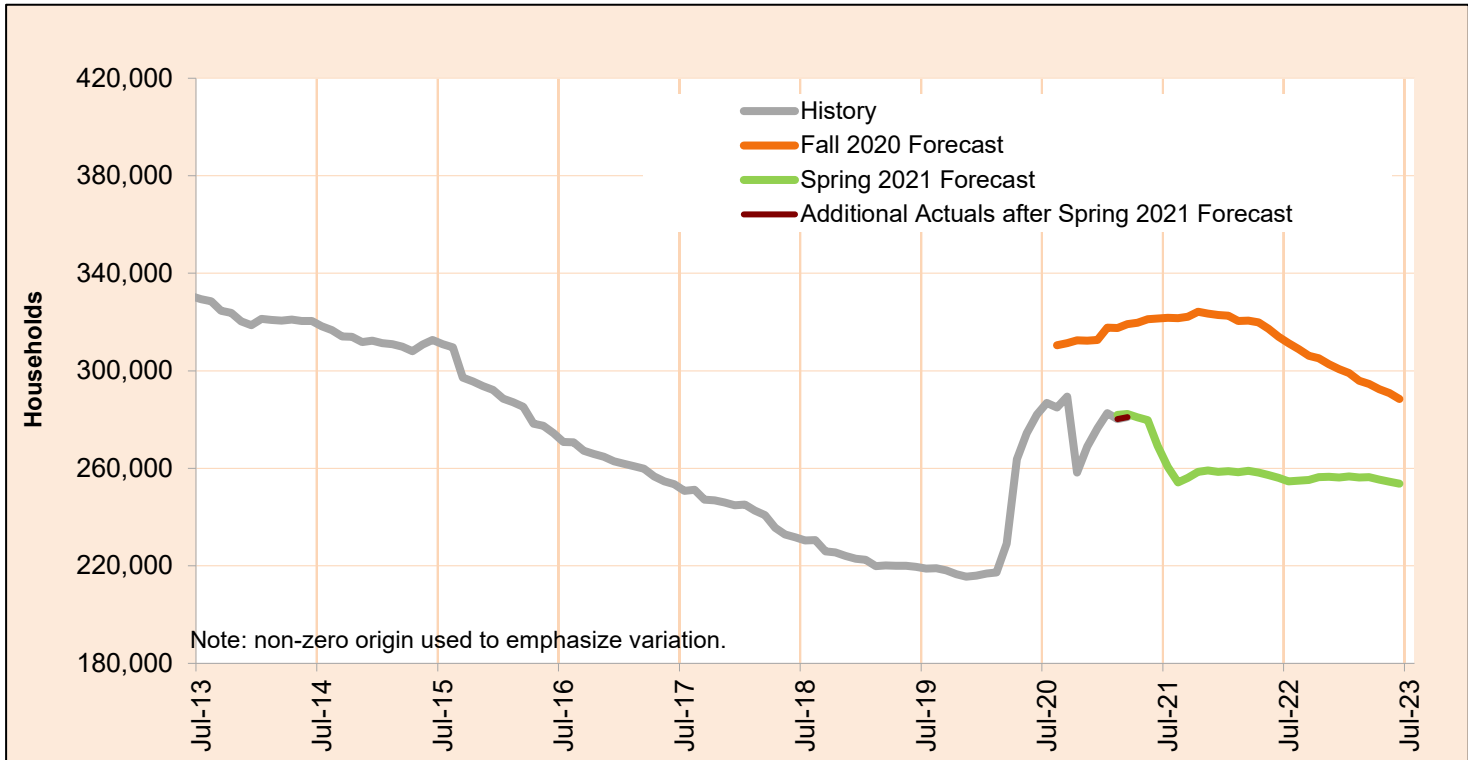
¹The likelihood that this data is inaccurate due to the rollout of the integrated eligibility system is high. Revisions are likely as the system becomes more stable.

²Data for this caseload is unavailable due to the rollout of the Integrated Eligibility system. Revisions will be published as soon as this data becomes available.

APRIL 2021

SNAP: Self Sufficiency

This program supplements food budgets for low-income families, individuals and seniors and people with disabilities.

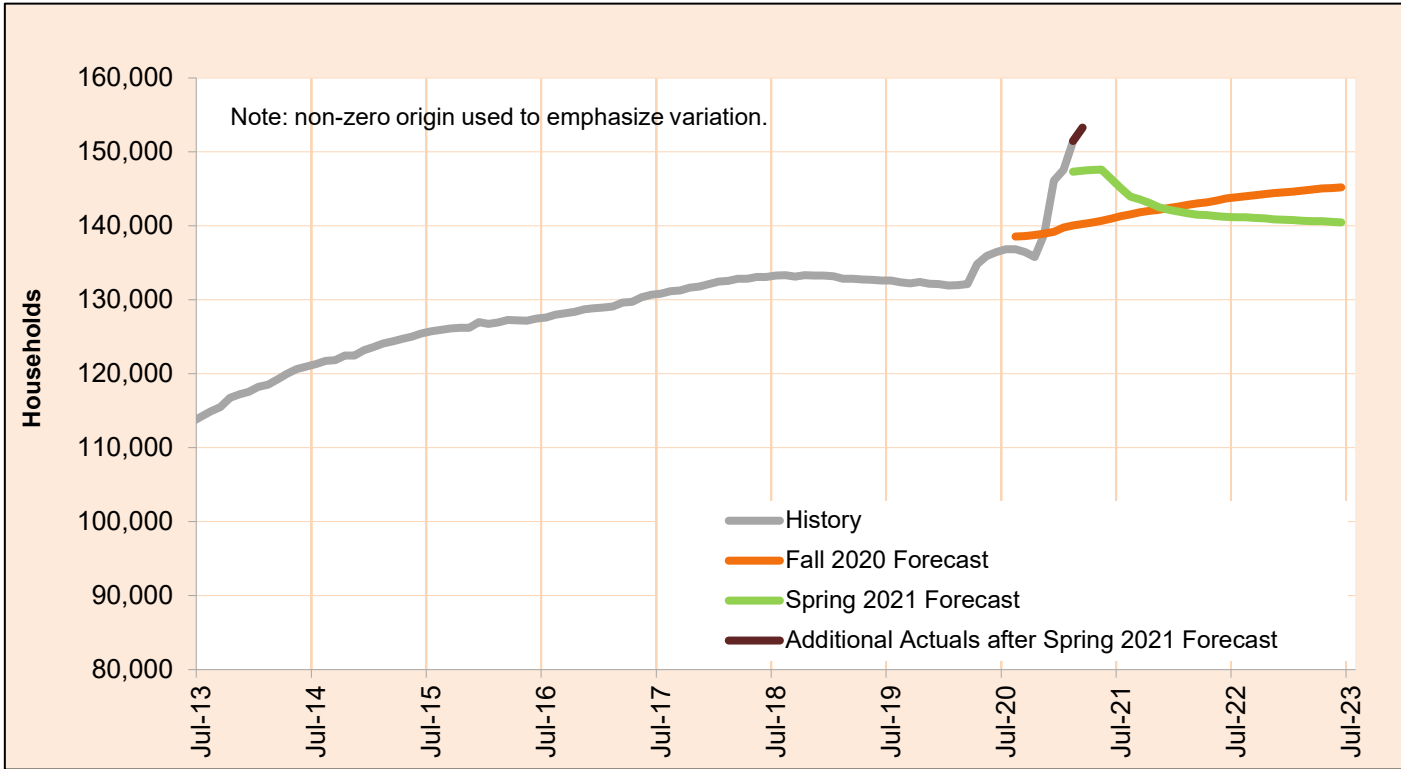


Month	Actual	Spring 2021 Forecast	Over/Under Forecast (Spring 2021)		Fall 2020 Forecast	Over/Under Forecast (Fall 2020)	
May-20	274,472	-	-	-	-	-	-
Jun-20	282,021	-	-	-	-	-	-
Jul-20	286,766	-	-	-	-	-	-
Aug-20	285,001	-	-	-	310,493	-25,492	-8.2%
Sep-20	289,484	-	-	-	311,393	-21,909	-7.0%
Oct-20	258,240	-	-	-	312,448	-54,208	-17.3%
Nov-20	268,986	-	-	-	312,370	-43,384	-13.9%
Dec-20	276,390	-	-	-	312,576	-36,186	-11.6%
Jan-21	282,675	-	-	-	317,744	-35,069	-11.0%
Feb-21	280,199	281,951	-1,752	-0.6%	317,534	-37,335	-11.8%
Mar-21	280,997	282,290	-1,293	-0.5%	319,091	-38,094	-11.9%
Apr-21	-	280,966	-	-	319,729	-	-
May-21	-	279,690	-	-	321,177	-	-

APRIL 2021

SNAP: Aging and People with Disabilities

This program supplements food budgets for low-income families, individuals and seniors and people with disabilities.

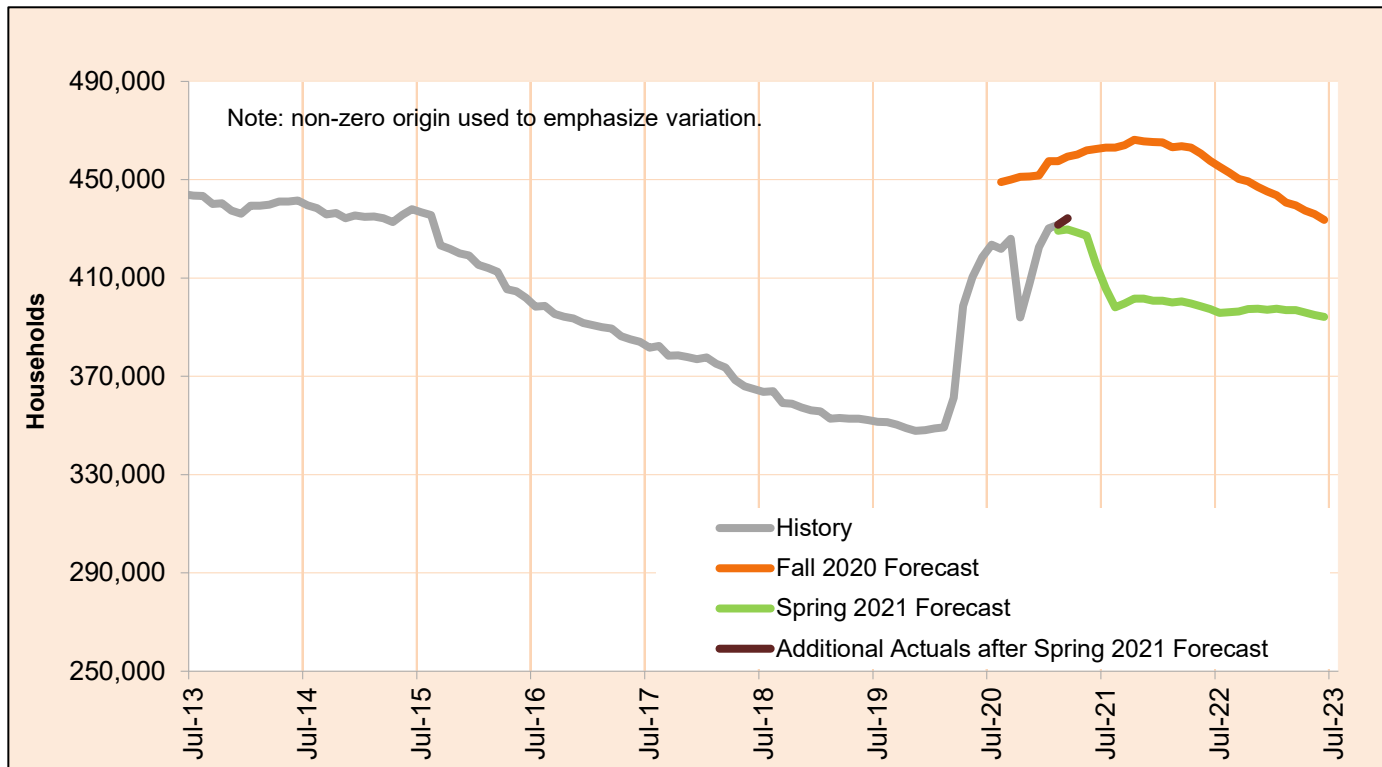


Month	Actual	Spring 2021 Forecast	Over/Under Forecast (Spring 2021)		Fall 2020 Forecast	Over/Under Forecast (Fall 2020)	
May-20	135,944	-	-	-	-	-	-
Jun-20	136,473	-	-	-	-	-	-
Jul-20	136,858	-	-	-	-	-	-
Aug-20	136,840	-	-	-	138,559	-1,719	-1.2%
Sep-20	136,469	-	-	-	138,639	-2,170	-1.6%
Oct-20	135,773	-	-	-	138,774	-3,001	-2.2%
Nov-20	138,895	-	-	-	138,947	-52	0.0%
Dec-20	146,108	-	-	-	139,186	6,922	5.0%
Jan-21	147,577	-	-	-	139,779	7,798	5.6%
Feb-21	151,470	147,319	4,151	2.8%	140,056	11,414	8.1%
Mar-21	153,281	147,477	5,804	3.9%	140,274	13,007	9.3%
Apr-21	-	147,572	-	-	140,453	-	-
May-21	-	147,608	-	-	140,688	-	-

APRIL 2021

Total Supplemental Nutrition Assistance Programs

This program supplements food budgets for low-income families, individuals and seniors and people with disabilities.

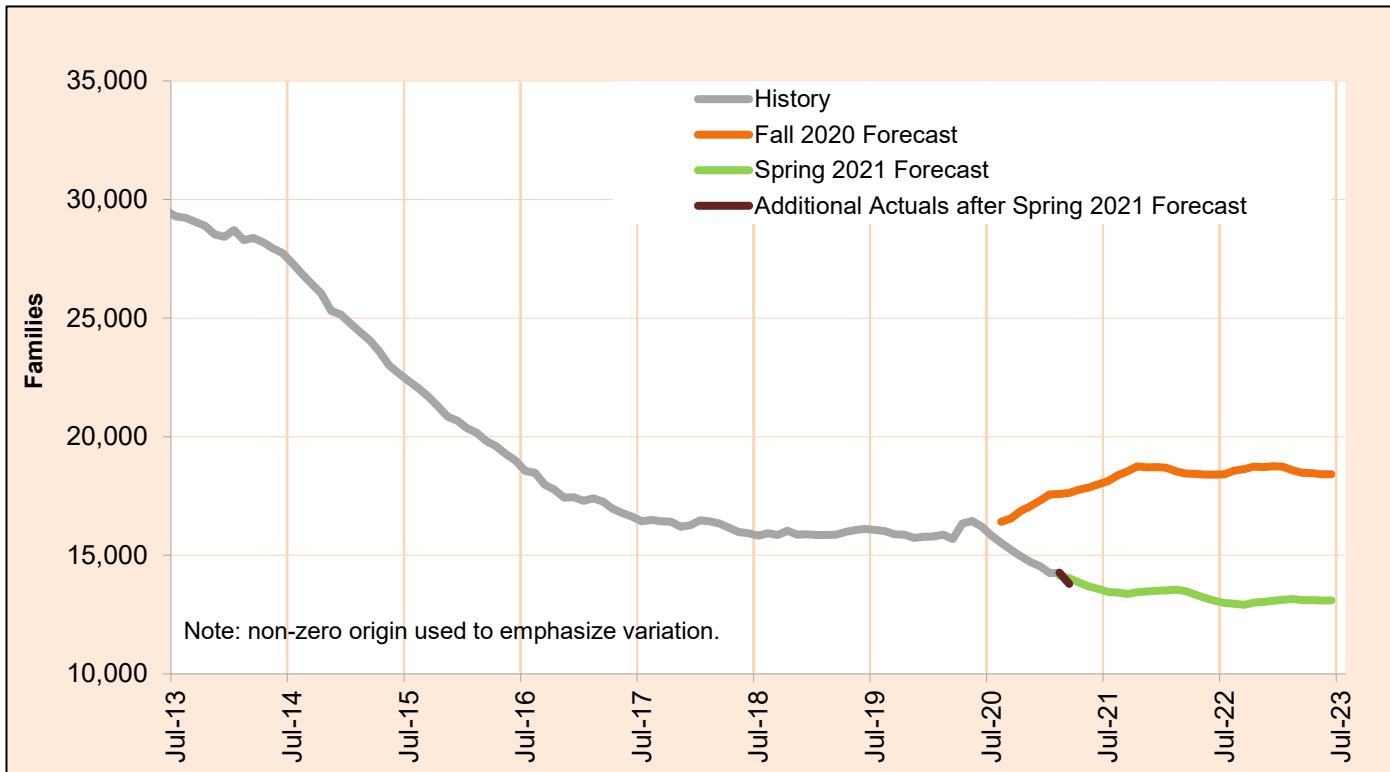


Month	Actual	Spring 2021 Forecast	Over/Under Forecast (Spring 2021)	Fall 2020 Forecast	Over/Under Forecast (Fall 2020)
May-20	410,416	-	-	-	-
Jun-20	418,494	-	-	-	-
Jul-20	423,624	-	-	-	-
Aug-20	421,841	-	-	449,052	-27,211 -6.1%
Sep-20	425,953	-	-	450,032	-24,079 -5.4%
Oct-20	394,013	-	-	451,222	-57,209 -12.7%
Nov-20	407,881	-	-	451,317	-43,436 -9.6%
Dec-20	422,498	-	-	451,762	-29,264 -6.5%
Jan-21	430,252	-	-	457,523	-27,271 -6.0%
Feb-21	431,669	429,270	2,399 0.6%	457,590	-25,921 -5.7%
Mar-21	434,278	429,767	4,511 1.0%	459,365	-25,087 -5.5%
Apr-21	-	428,538	-	460,182	-
May-21	-	427,298	-	461,865	-

APRIL 2021

Temporary Assistance for Needy Families - One Parent

The Temporary Assistance for Needy Families (TANF) One Parent program provides services and cash grants to low-income families with one parent living in the home to help them become self-sufficient.



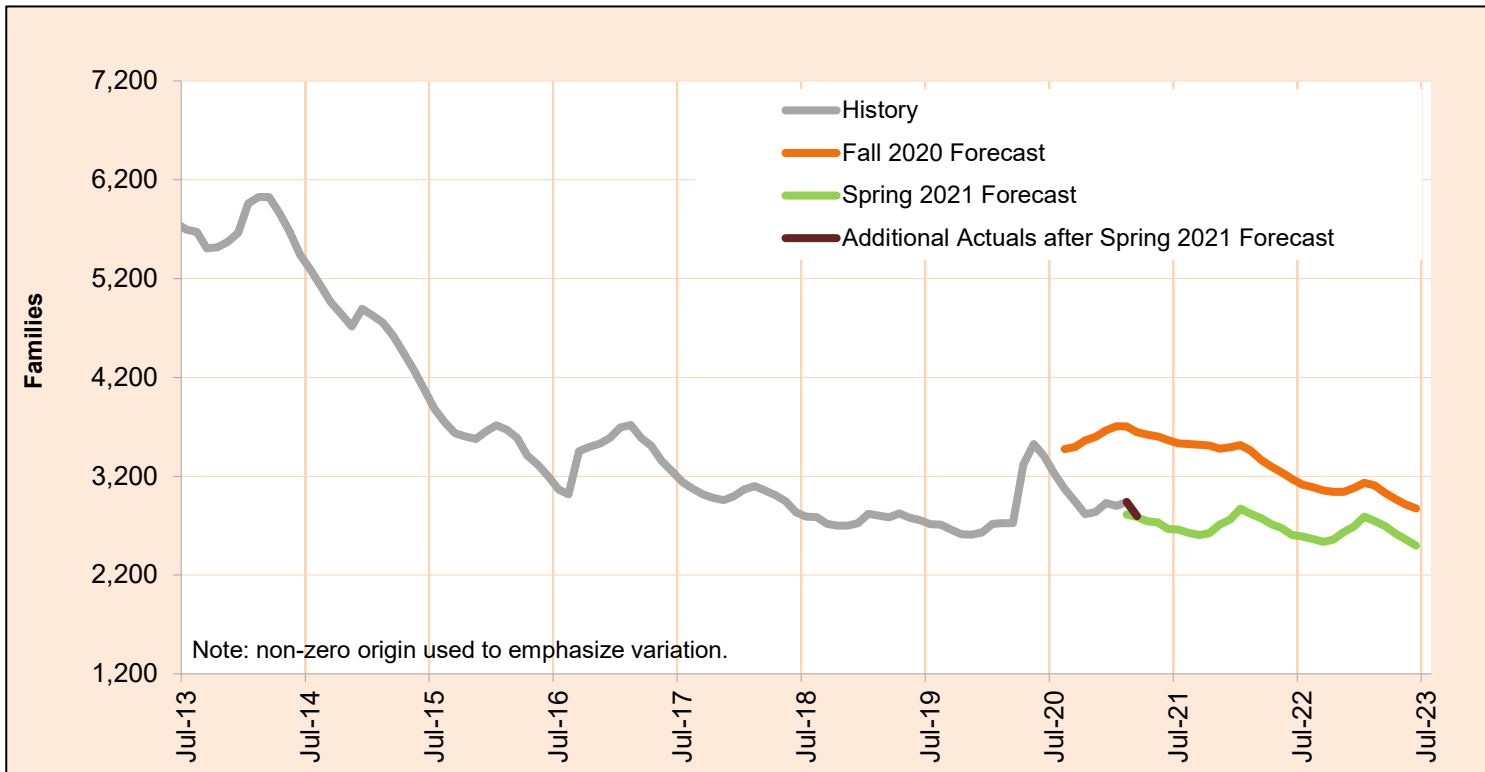
Month	Actual	Spring 2021 Forecast	Over/Under Forecast (Spring 2021)		Fall 2020 Forecast	Over/Under Forecast (Fall 2020)	
May-20	16,450	-	-	-	-	-	-
Jun-20	16,198	-	-	-	-	-	-
Jul-20	15,822	-	-	-	-	-	-
Aug-20	15,519	-	-	-	16,414	-895	-5.5%
Sep-20	15,231	-	-	-	16,557	-1,326	-8.0%
Oct-20	14,967	-	-	-	16,875	-1,908	-11.3%
Nov-20	14,724	-	-	-	17,072	-2,348	-13.8%
Dec-20	14,542	-	-	-	17,311	-2,769	-16.0%
Jan-21	14,243	-	-	-	17,569	-3,326	-18.9%
Feb-21	14,265	14,140	125	0.9%	17,581	-3,316	-18.9%
Mar-21	13,797	14,031	-234	-1.7%	17,633	-3,836	-21.8%
Apr-21	-	13,850	-	-	17,764	-	-
May-21	-	13,693	-	-	17,861	-	-

NOTE: In order to deal with an overlap in monthly data reporting between TANF and the after-TANF benefit known as Employment Payments, TANF caseload counts have been revised, starting in May 2016. In any month where an Employment Payment has been authorized, the TANF case has been removed from the caseload count. This eliminates the possibility of duplicate counts.

APRIL 2021

Temporary Assistance for Needy Families - Two Parent

The Temporary Assistance for Needy Families (TANF) Two Parent program provides services and cash grants to low-income families with two parents in the home to help them become self-sufficient.



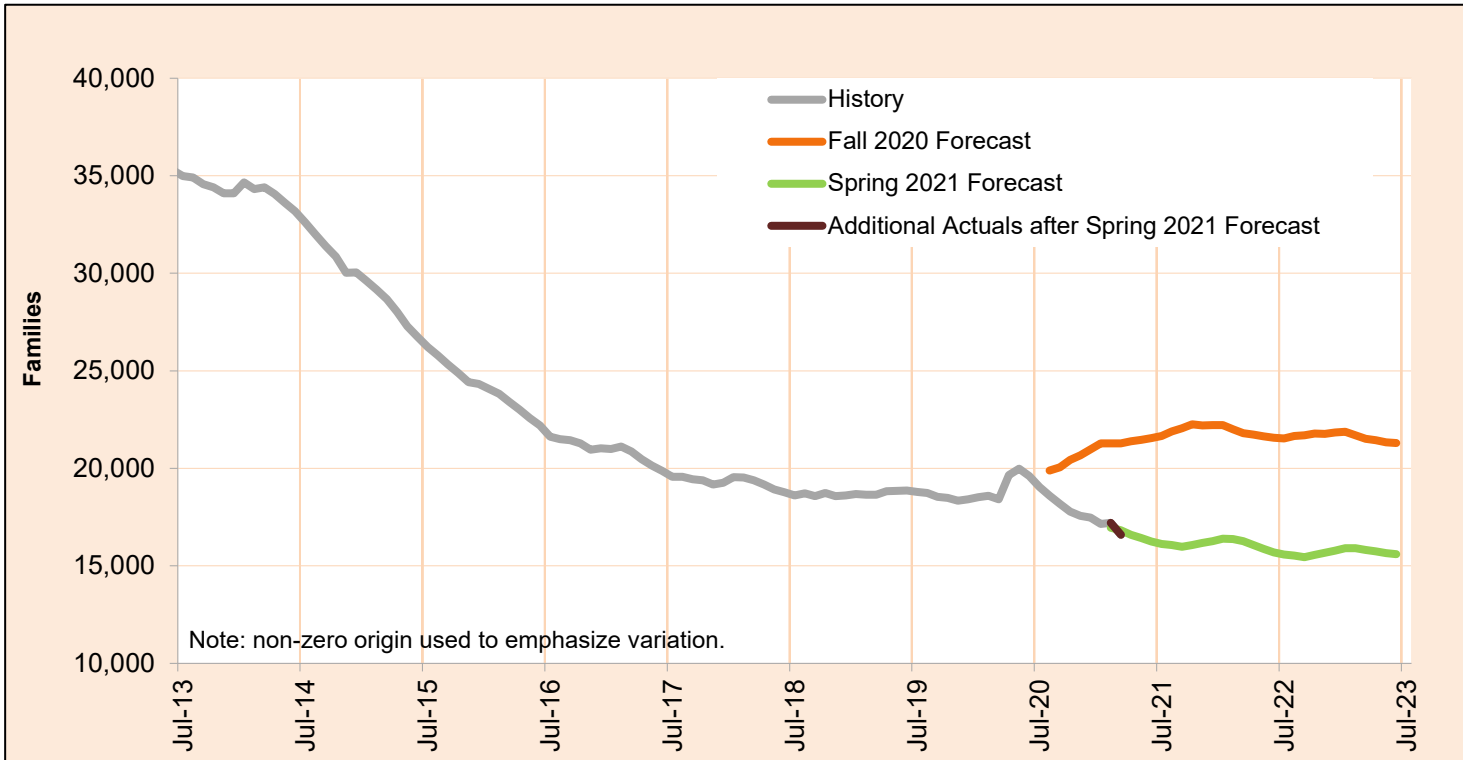
Month	Actual	Spring 2021 Forecast	Over/Under Forecast (Spring 2021)		Fall 2020 Forecast	Over/Under Forecast (Fall 2020)	
May-20	3,525	-	-	-	-	-	-
Jun-20	3,405	-	-	-	-	-	-
Jul-20	3,229	-	-	-	-	-	-
Aug-20	3,071	-	-	-	3,473	-402	-11.6%
Sep-20	2,945	-	-	-	3,495	-550	-15.7%
Oct-20	2,815	-	-	-	3,561	-746	-20.9%
Nov-20	2,839	-	-	-	3,600	-761	-21.1%
Dec-20	2,929	-	-	-	3,664	-735	-20.1%
Jan-21	2,901	-	-	-	3,706	-805	-21.7%
Feb-21	2,940	2,814	126	4.5%	3,703	-763	-20.6%
Mar-21	2,796	2,788	8	0.3%	3,646	-850	-23.3%
Apr-21	-	2,742	-	-	3,619	-	-
May-21	-	2,732	-	-	3,601	-	-

NOTE: In order to deal with an overlap in monthly data reporting between TANF and the after-TANF benefit known as Employment Payments, TANF caseload counts have been revised, starting in May 2016. In any month where an Employment Payment has been authorized, the TANF case has been removed from the caseload count. This eliminates the possibility of duplicate counts.

APRIL 2021

Total Temporary Assistance for Needy Families

The Temporary Assistance for Needy Families (TANF) program provides services and cash grants to low-income families with children to help them become self-sufficient.



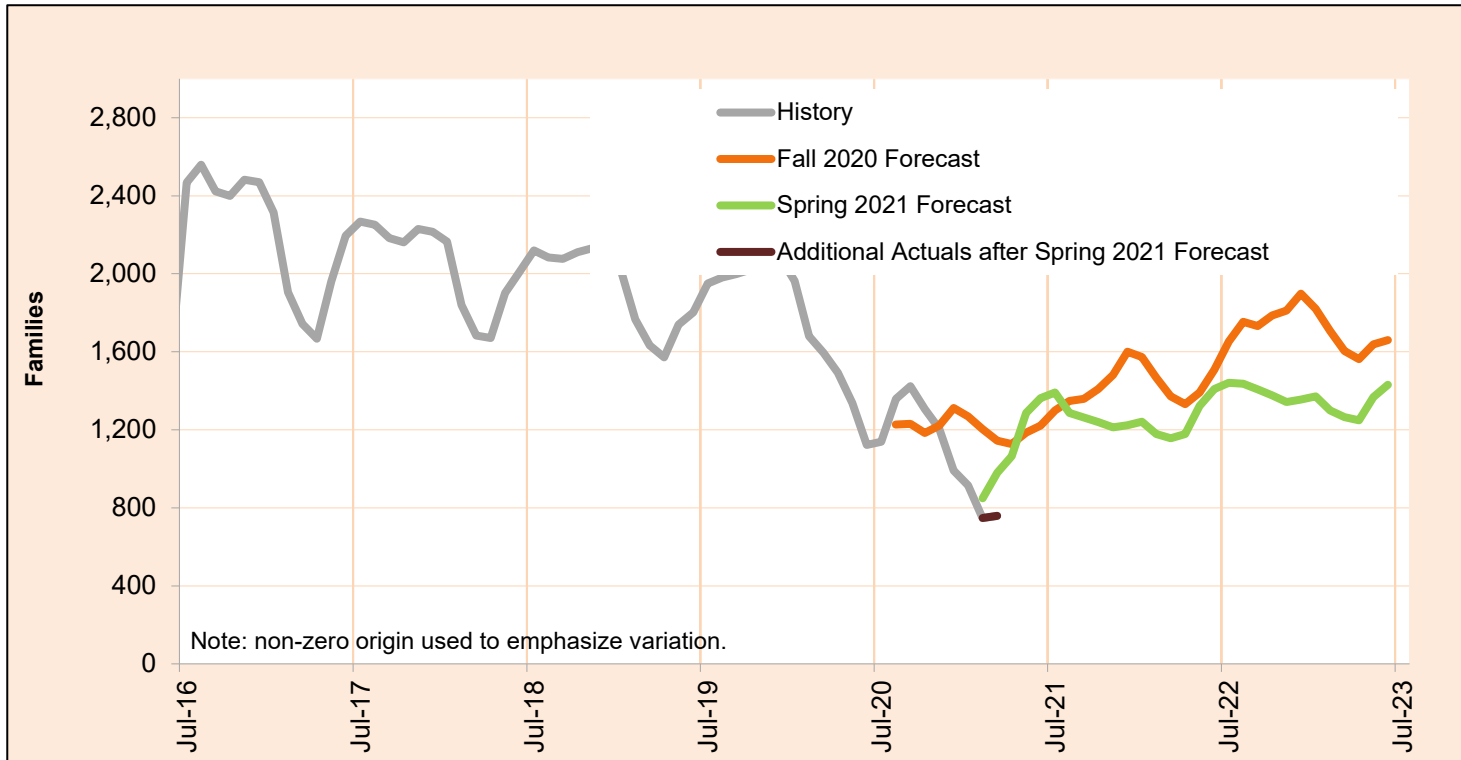
Month	Actual	Spring 2021 Forecast	Over/Under Forecast (Spring 2021)		Fall 2020 Forecast	Over/Under Forecast (Fall 2020)	
May-20	19,975	-	-	-	-	-	-
Jun-20	19,603	-	-	-	-	-	-
Jul-20	19,051	-	-	-	-	-	-
Aug-20	18,590	-	-	-	19,887	-1,297	-6.5%
Sep-20	18,176	-	-	-	20,052	-1,876	-9.4%
Oct-20	17,782	-	-	-	20,436	-2,654	-13.0%
Nov-20	17,563	-	-	-	20,672	-3,109	-15.0%
Dec-20	17,471	-	-	-	20,975	-3,504	-16.7%
Jan-21	17,144	-	-	-	21,275	-4,131	-19.4%
Feb-21	17,205	16,954	251	1.5%	21,284	-4,079	-19.2%
Mar-21	16,593	16,819	-226	-1.3%	21,279	-4,686	-22.0%
Apr-21	-	16,592	-	-	21,383	-	-
May-21	-	16,425	-	-	21,462	-	-

NOTE: In order to deal with an overlap in monthly data reporting between TANF and the after-TANF benefit known as Employment Payments, TANF caseload counts have been revised, starting in May 2016. In any month where an Employment Payment has been authorized, the TANF case has been removed from the caseload count. This eliminates the possibility of duplicate counts.

APRIL 2021

TANF Employment Payments

TANF Employment Payments (TANF-EP) provides short-term financial assistance (3 months) for families after exiting TANF. Cases began transitioning to TANF-EP in May, 2016.

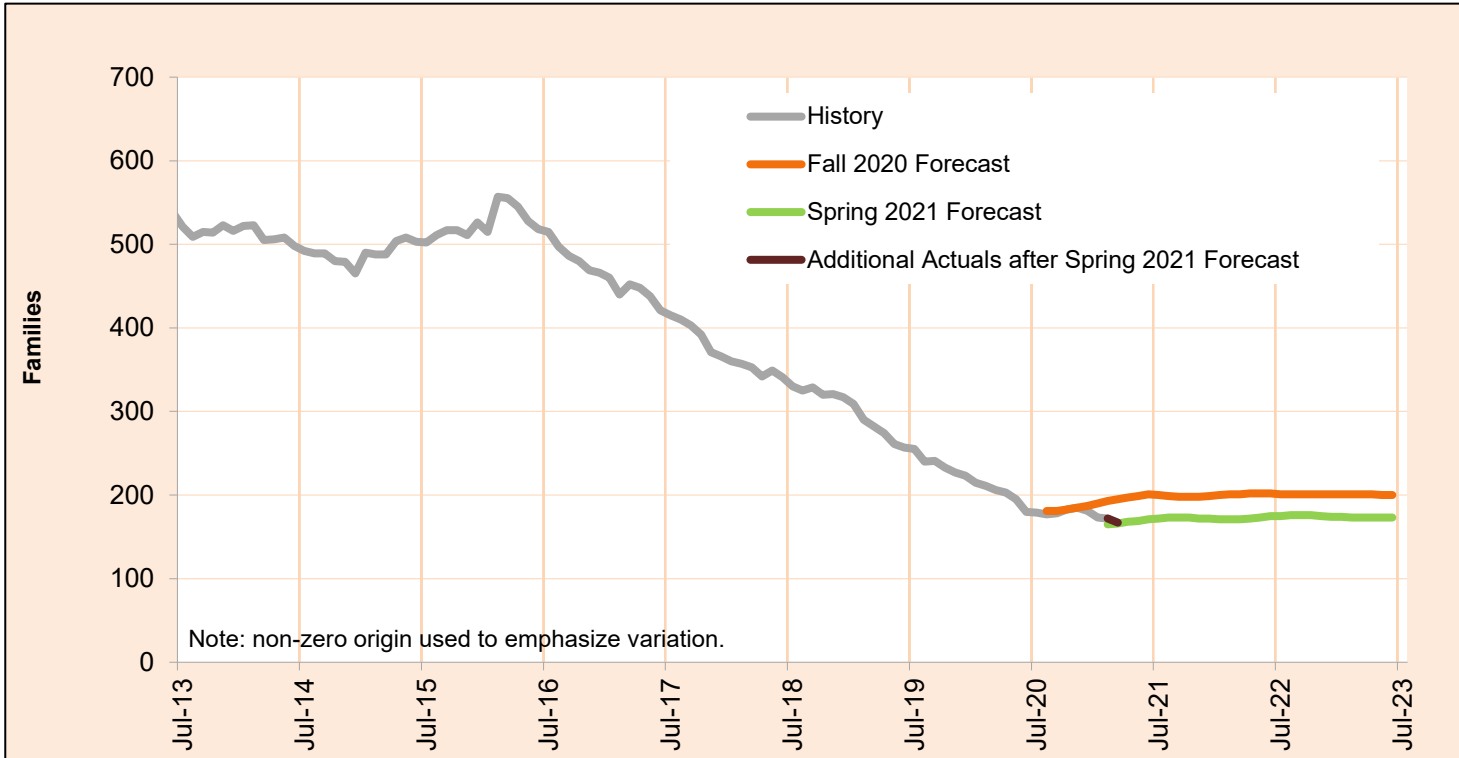


Month	Actual	Spring 2021 Forecast	Over/Under Forecast (Spring 2021)		Fall 2020 Forecast	Over/Under Forecast (Fall 2020)	
May-20	1,337	-	-	-	-	-	-
Jun-20	1,123	-	-	-	-	-	-
Jul-20	1,139	-	-	-	0	1,139	-
Aug-20	1,359	-	-	-	-	-	-
Sep-20	1,424	-	-	-	1,230	194	15.8%
Oct-20	1,306	-	-	-	1,184	122	10.3%
Nov-20	1,205	-	-	-	1,222	-17	-1.4%
Dec-20	991	-	-	-	1,311	-320	-24.4%
Jan-21	915	-	-	-	1,268	-353	-27.8%
Feb-21	748	849	-101	-11.9%	1,203	-455	-37.8%
Mar-21	759	979	-220	-22.5%	1,145	-386	-33.7%
Apr-21	-	1,063	-	-	1,127	-	-
May-21	-	1,285	-	-	1,185	-	-

APRIL 2021

Pre-SSI

Pre-SSI provides temporary benefits for families while they apply for SSI.

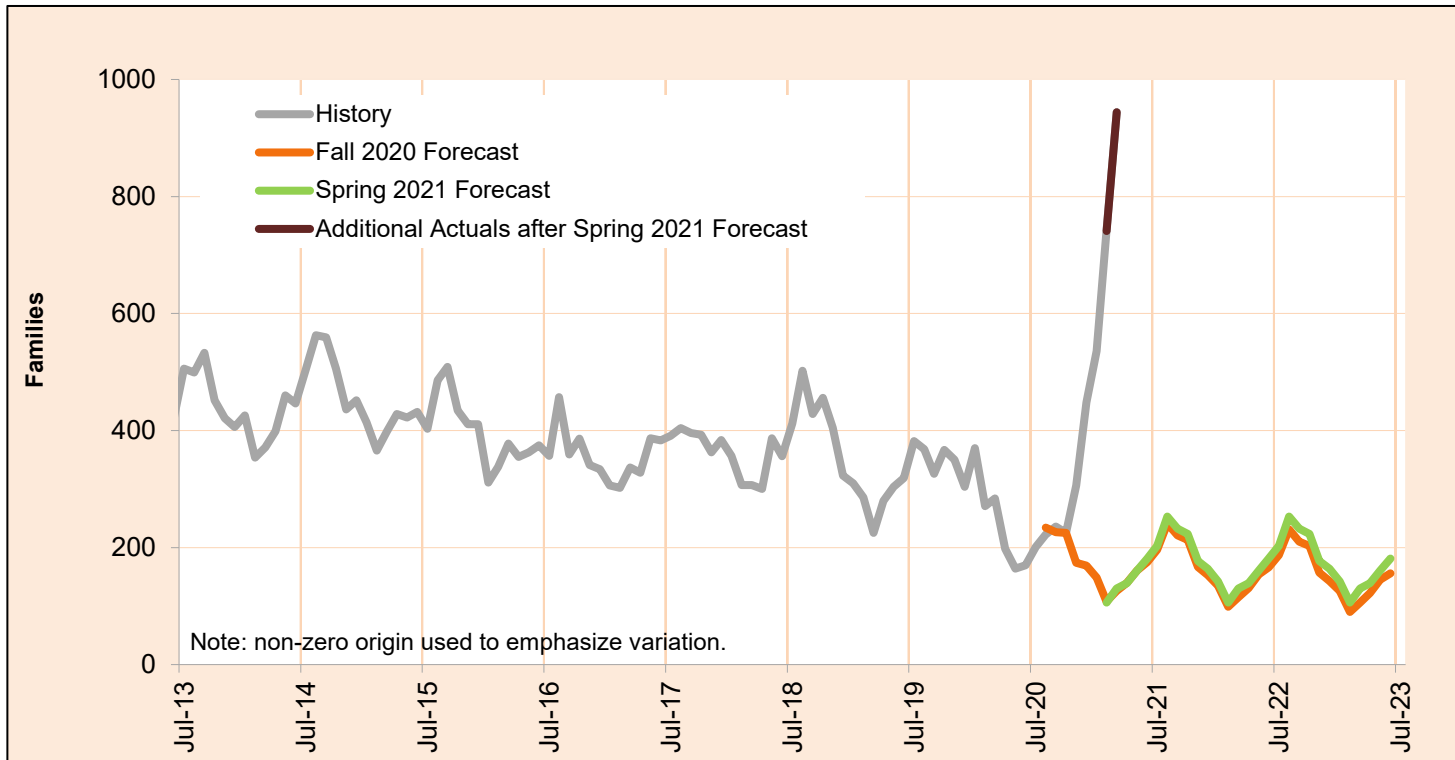


Month	Actual	Spring 2021 Forecast	Over/Under Forecast (Spring 2021)		Fall 2020 Forecast	Over/Under Forecast (Fall 2020)	
May-20	195	-	-	-	-	-	-
Jun-20	180	-	-	-	-	-	-
Jul-20	179	-	-	-	0	179	-
Aug-20	177	-	-	-	-	-	-
Sep-20	178	-	-	-	181	-3	-1.7%
Oct-20	183	-	-	-	183	0	0.0%
Nov-20	185	-	-	-	185	0	0.0%
Dec-20	181	-	-	-	187	-6	-3.2%
Jan-21	173	-	-	-	190	-17	-8.9%
Feb-21	172	165	7	4.2%	193	-21	-10.9%
Mar-21	167	166	1	0.6%	195	-28	-14.4%
Apr-21	-	168	-	-	197	-	-
May-21	-	169	-	-	199	-	-

APRIL 2021

Temporary Assistance for Domestic Violence Survivors-With Payment*

Temporary Assistance for Domestic Violence Survivors (TA-DVS) provides short-term financial assistance (up to 90 days) for individuals fleeing an abusive partner or family member.



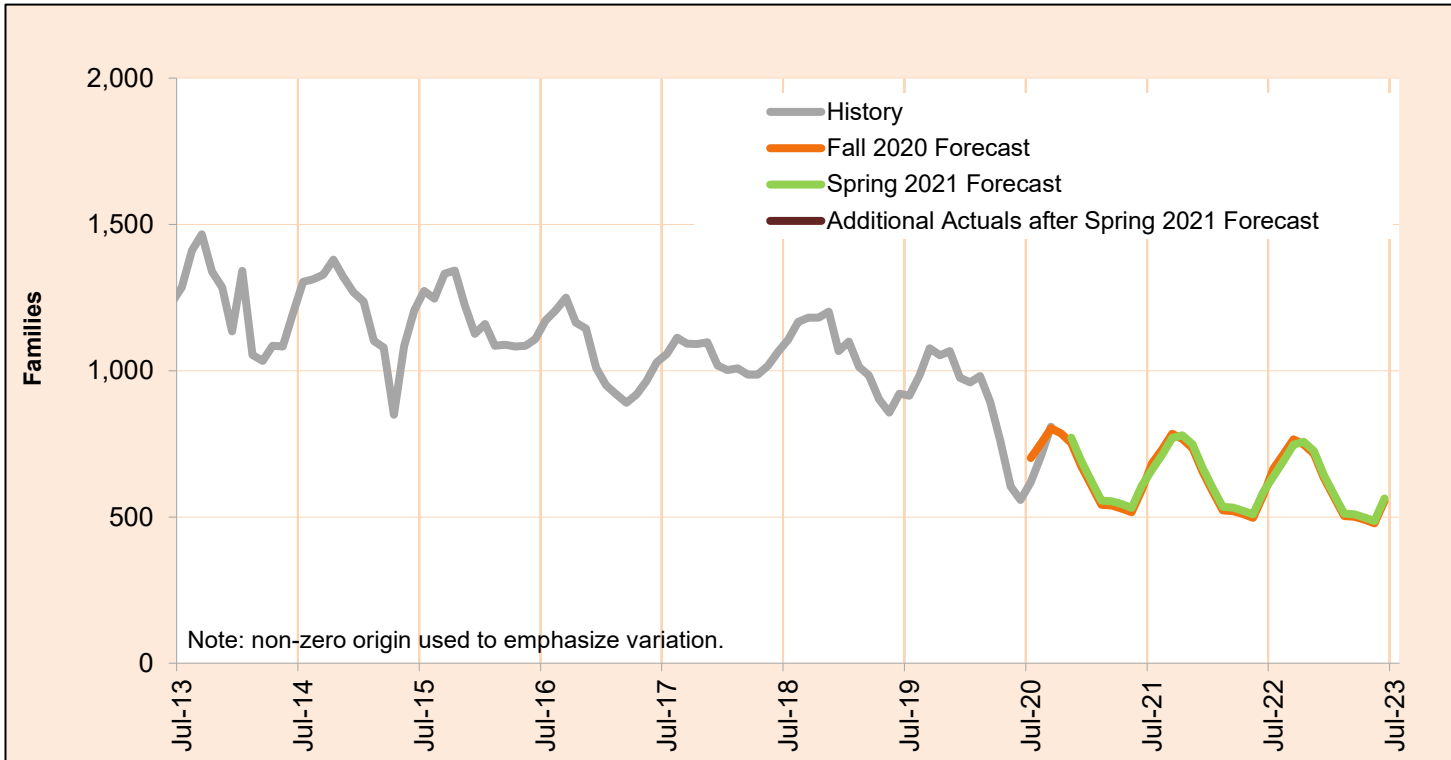
Month	Actual	Spring 2021 Forecast	Over/Under Forecast (Spring 2021)		Fall 2020 Forecast	Over/Under Forecast (Fall 2020)	
May-20	164	-	-	-	-	-	-
Jun-20	170	-	-	-	-	-	-
Jul-20	201	-	-	-	-	-	-
Aug-20	222	-	-	-	234	-12	-5.1%
Sep-20	236	-	-	-	226	10	4.4%
Oct-20	225	-	-	-	225	0	0.0%
Nov-20	306	-	-	-	174	132	75.9%
Dec-20	448	-	-	-	169	279	165.1%
Jan-21	536	-	-	-	149	387	259.7%
Feb-21	741	106	635	599.1%	108	633	586.1%
Mar-21	944	130	814	626.2%	126	818	649.2%
Apr-21	-	139	-	-	140	-	-
May-21	-	161	-	-	161	-	-

*The likelihood that this data is inaccurate due to the rollout of the integrated eligibility system is high. Revisions are likely as the system becomes more stable.

APRIL 2021

Temporary Assistance for Domestic Violence Survivors-Without Payment*

Temporary Assistance for Domestic Violence Survivors Without Payment represents individuals fleeing an abusive partner or family member who did not accept short-term financial assistance, but did receive other forms of aid including referrals to other services.



Month	Actual	Spring 2021 Forecast	Over/Under Forecast (Spring 2021)	Fall 2020 Forecast	Over/Under Forecast (Fall 2020)
May-20	604	-	-	-	-
Jun-20	558	-	-	-	-
Jul-20	618	-	-	702	-84 -12.0%
Aug-20	707	-	-	751	-44 -5.9%
Sep-20	808	-	-	803	5 0.6%
Oct-20	795	-	-	785	10 1.3%
Nov-20	-	771	-	753	-
Dec-20	-	690	-	672	-
Jan-21	-	621	-	606	-
Feb-21	-	556	-	541	-
Mar-21	-	554	-	539	-
Apr-21	-	544	-	528	-
May-21	-	530	-	516	-

*Data for this caseload is unavailable due to the rollout of the Integrated Eligibility system. Revisions will be published as soon as this data becomes available.