

DECEMBER 2020

Note: The changes in public policy, behavior, and economics due to the COVID-19 crisis have created greater uncertainty than is usually experienced in a forecast cycle. Details concerning the assumptions underlying all forecasted caseload areas are contained in the Fall 2020 DHS-OHA Caseload Forecast report, which was released at the end of October.

Due to the rollout of the new Integrated Eligibility (I.E.) system, some programs of Self-Sufficiency data were not available for this monthly update. Data for November will be updated in subsequent variance reports, as we confirm accuracy with the new data source.

Total Temporary Assistance for Needy Families

Month	Actual	Fall 2020 Forecast	Over/Under Forecast	%
Jun-20	19,603	-	-	-
Jul-20	19,051	-	-	-
Aug-20	18,594	19,887	-1,293	-6.5%
Sep-20	18,188	20,052	-1,864	-9.3%
Oct-20	17,786	20,436	-2,650	-13.0%
Nov-20	17,307	20,672	-3,365	-16.3%

TANF: One-Parent

Month	Actual	Fall 2020 Forecast	Over/Under Forecast	%
Jun-20	16,198	-	-	-
Jul-20	15,822	-	-	-
Aug-20	15,520	16,414	-894	-5.4%
Sep-20	15,235	16,557	-1,322	-8.0%
Oct-20	14,968	16,875	-1,907	-11.3%
Nov-20	14,545	17,072	-2,527	-14.8%

TANF: Two-Parent

Month	Actual	Fall 2020 Forecast	Over/Under Forecast	%
Jun-20	3,405	-	-	-
Jul-20	3,229	-	-	-
Aug-20	3,074	3,473	-399	-11.5%
Sep-20	2,953	3,495	-542	-15.5%
Oct-20	2,818	3,561	-743	-20.9%
Nov-20	2,762	3,600	-838	-23.3%

TANF Employment Payments

Month	Actual	Fall 2020 Forecast	Over/Under Forecast	%
Jun-20	1,123	-	-	-
Jul-20	1,139	-	-	-
Aug-20	1,359	1,227	132	10.8%
Sep-20	1,423	1,230	193	15.7%
Oct-20	1,304	1,184	120	10.1%
Nov-20	1,188	1,221	-33	-2.7%

Temporary Assistance for Domestic Violence Survivors - with Payment (Families)

Month	Actual	Fall 2020 Forecast	Over/Under Forecast	%
Jun-20	170	-	-	-
Jul-20	201	-	-	-
Aug-20	212	234	-22	-9.4%
Sep-20	219	226	-7	-3.1%
Oct-20	201	225	-24	-10.7%
Nov-20	168	174	-6	-3.4%

Temporary Assistance for Domestic Violence Survivors - without Payment (Families)

Month	Actual	Fall 2020 Forecast	Over/Under Forecast	%
May-20	604	-	-	-
Jun-20	558	-	-	-
Jul-20	618	702	-84	-12.0%
Aug-20	707	751	-44	-5.9%
Sep-20	808	803	5	0.6%
Oct-20	-	784	-	-

Pre-SSI

Month	Actual	Fall 2020 Forecast	Over/Under Forecast	%
Jun-20	180	-	-	-
Jul-20	189	-	-	-
Aug-20	180	181	-1	-0.6%
Sep-20	179	181	-2	-1.1%
Oct-20	179	183	-4	-2.2%
Nov-20	-	185	-	-

Total Supplemental Nutrition Assistance Programs

Month	Actual	Fall 2020 Forecast	Over/Under Forecast	%
Jun-20	418,494	-	-	-
Jul-20	423,702	-	-	-
Aug-20	422,065	449,052	-26,987	-6.0%
Sep-20	426,365	450,032	-23,667	-5.3%
Oct-20	394,703	451,222	-56,519	-12.5%
Nov-20	385,451	451,317	-65,866	-14.6%

DECEMBER 2020

SNAP: Aging and People with Disabilities

Month	Actual	Fall 2020 Forecast	Over/Under Forecast	%
Jun-20	136,473	-	-	-
Jul-20	136,923	-	-	-
Aug-20	137,021	138,559	-1,538	-1.1%
Sep-20	136,744	138,639	-1,895	-1.4%
Oct-20	136,242	138,774	-2,532	-1.8%
Nov-20	140,385	138,947	1,438	1.0%

SNAP: Self Sufficiency

Month	Actual	Fall 2020 Forecast	Over/Under Forecast	%
Jun-20	282,021	-	-	-
Jul-20	286,779	-	-	-
Aug-20	285,044	310,493	-25,449	-8.2%
Sep-20	289,621	311,393	-21,772	-7.0%
Oct-20	258,461	312,448	-53,987	-17.3%
Nov-20	245,066	312,370	-67,304	-21.5%

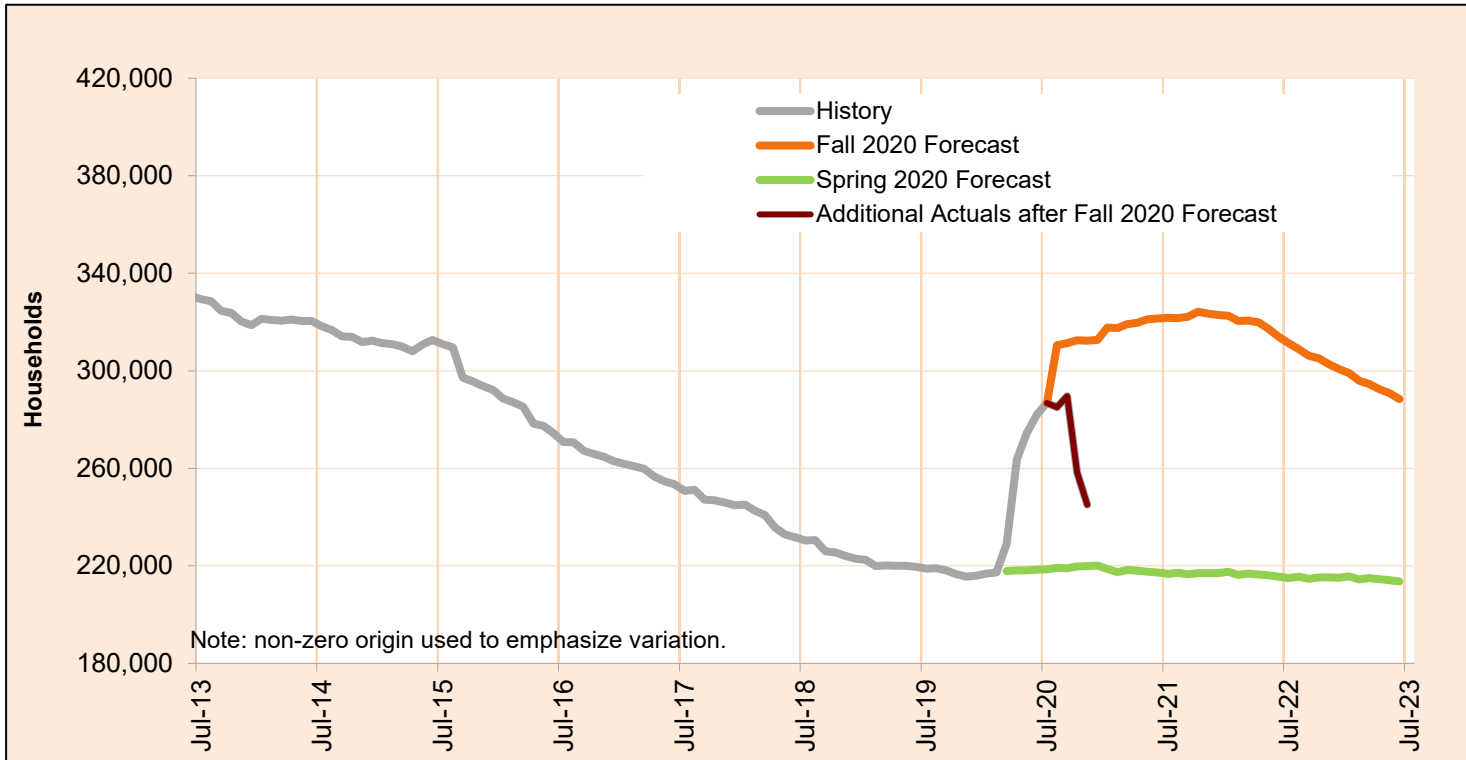
Employment Related Daycare (Families)

Month	Actual	Forecast Discontinued
Jun-20	6,829	
Jul-20	6,805	
Aug-20	6,887	
Sep-20	7,114	
Oct-20	7,488	
Nov-20	-	

DECEMBER 2020

SNAP: Self Sufficiency

This program supplements food budgets for low-income families, individuals and seniors and people with disabilities.

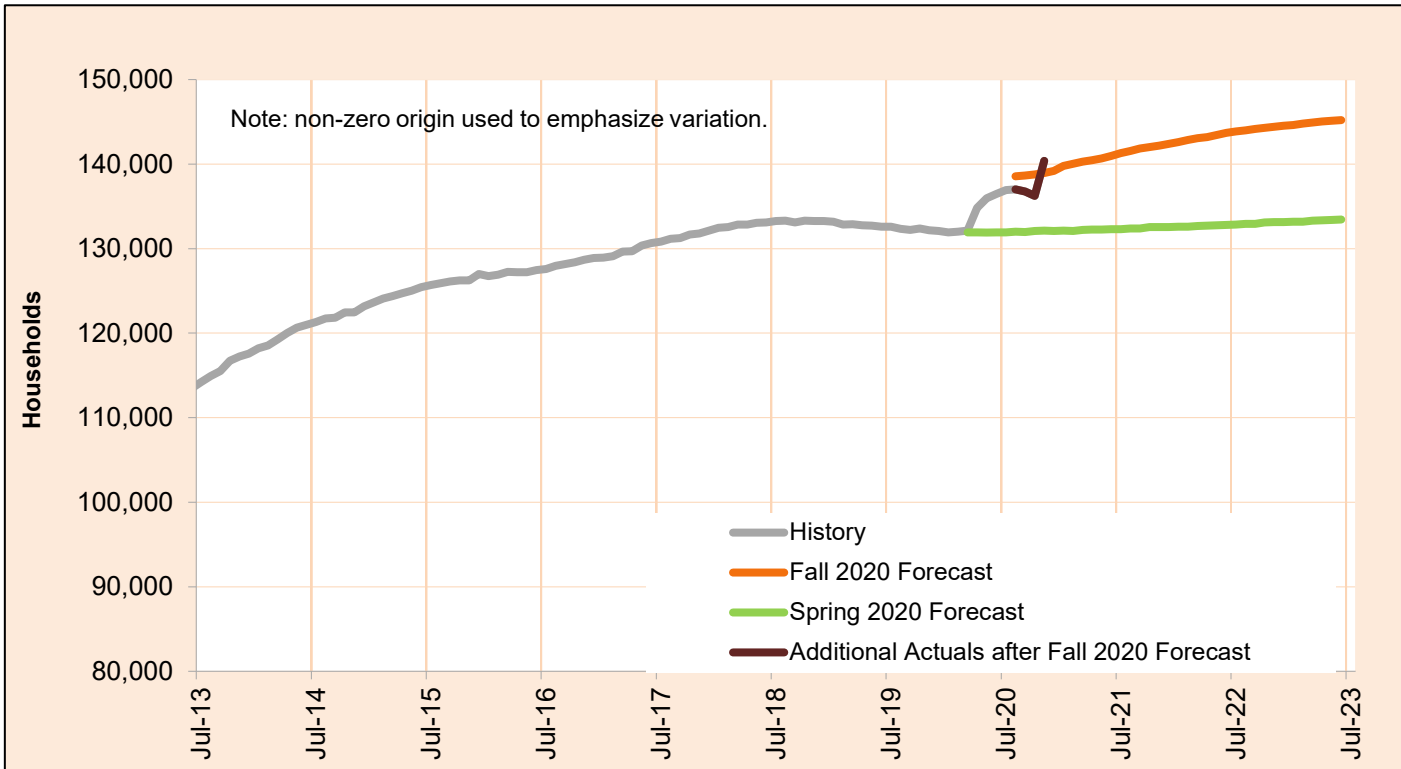


Month	Actual	Fall 2020 Forecast	Over/Under Forecast (Fall 2020)		Spring 2020 Forecast	Over/Under Forecast (Spring 2020)	
Jan-20	216,854	-	-	-	-	-	-
Feb-20	217,245	-	-	-	-	-	-
Mar-20	229,088	-	-	-	217,840	11,248	5.2%
Apr-20	263,760	-	-	-	218,210	45,550	20.9%
May-20	274,472	-	-	-	218,138	56,334	25.8%
Jun-20	282,021	-	-	-	218,480	63,541	29.1%
Jul-20	286,779	-	-	-	218,601	68,178	31.2%
Aug-20	285,044	310,493	-25,449	-8.2%	219,200	65,844	30.0%
Sep-20	289,621	311,393	-21,772	-7.0%	219,067	70,554	32.2%
Oct-20	258,461	312,448	-53,987	-17.3%	219,722	38,739	17.6%
Nov-20	245,066	312,370	-67,304	-21.5%	219,816	25,250	11.5%
Dec-20	-	312,576	-	-	220,109	-	-
Jan-21	-	317,744	-	-	218,718	-	-

DECEMBER 2020

SNAP: Aging and People with Disabilities

This program supplements food budgets for low-income families, individuals and seniors and people with disabilities.

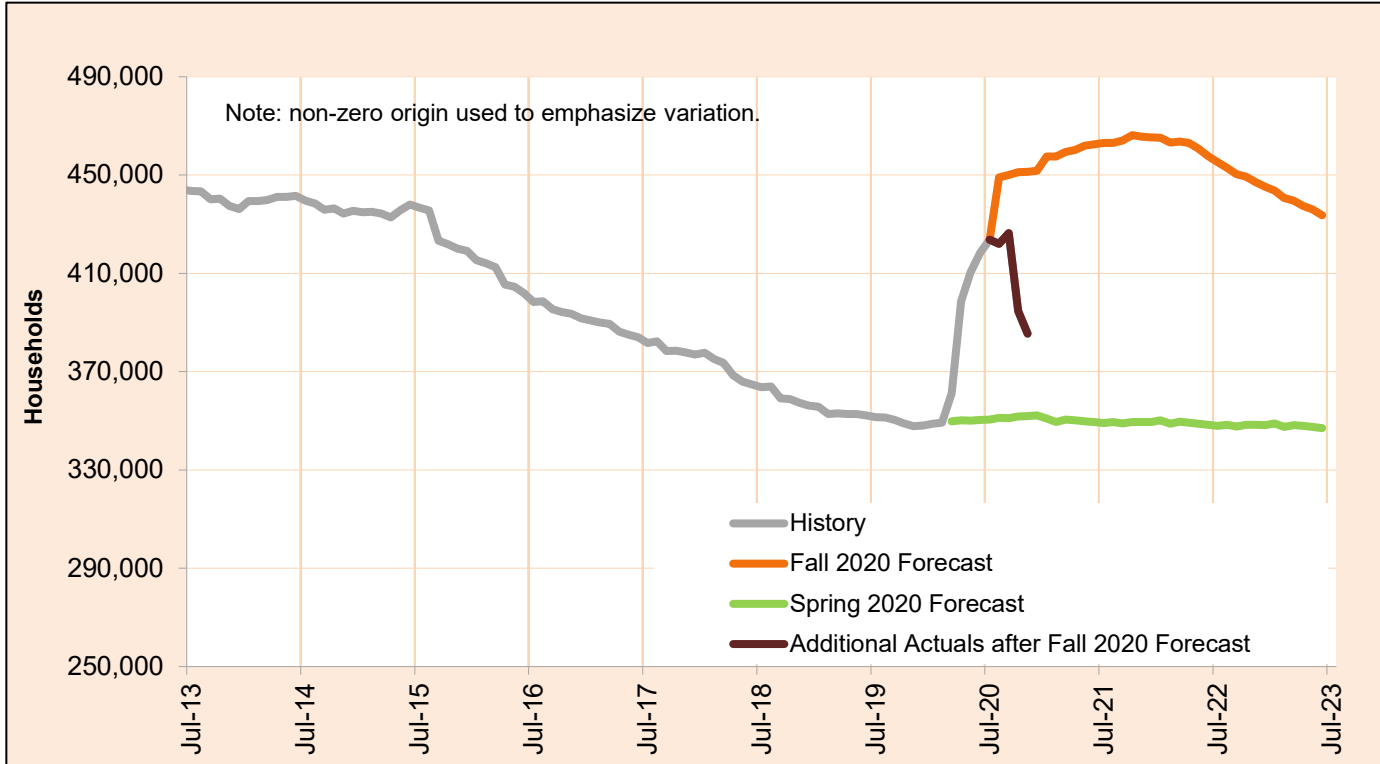


Month	Actual	Fall 2020 Forecast	Over/Under Forecast (Fall 2020)		Spring 2020 Forecast	Over/Under Forecast (Spring 2020)	
Jan-20	131,918	-	-	-	-	-	-
Feb-20	131,999	-	-	-	-	-	-
Mar-20	132,133	-	-	-	131,937	196	0.1%
Apr-20	134,833	-	-	-	131,934	2,899	2.2%
May-20	135,944	-	-	-	131,904	4,040	3.1%
Jun-20	136,473	-	-	-	131,915	4,558	3.5%
Jul-20	136,923	-	-	-	131,927	4,996	3.8%
Aug-20	137,021	138,559	-1,538	-1.1%	131,986	5,035	3.8%
Sep-20	136,744	138,639	-1,895	-1.4%	131,967	4,777	3.6%
Oct-20	136,242	138,774	-2,532	-1.8%	132,096	4,146	3.1%
Nov-20	140,385	138,947	1,438	1.0%	132,124	8,261	6.3%
Dec-20	-	139,186	-	-	132,102	-	-
Jan-21	-	139,779	-	-	132,135	-	-

DECEMBER 2020

Total Supplemental Nutrition Assistance Programs

This program supplements food budgets for low-income families, individuals and seniors and people with disabilities.

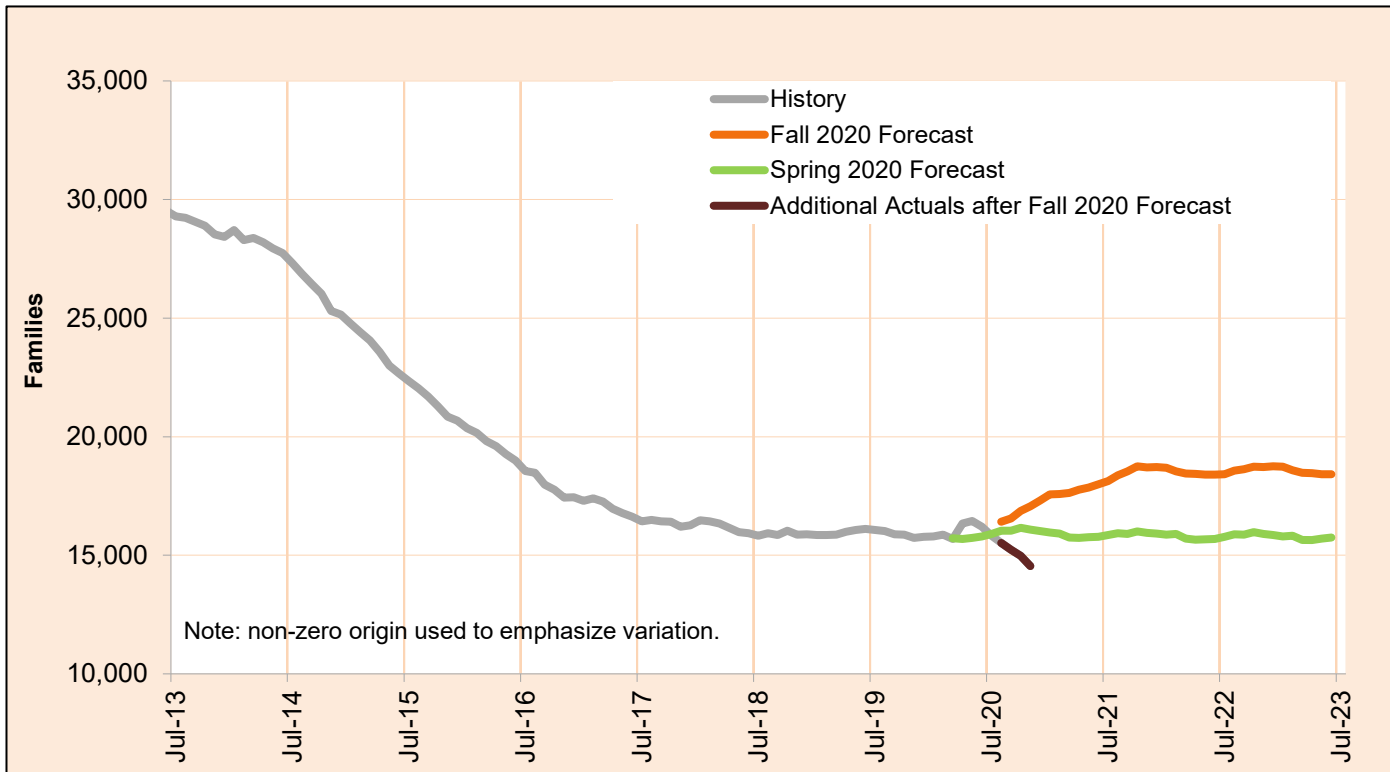


Month	Actual	Fall 2020 Forecast	Over/Under Forecast (Fall 2020)		Spring 2020 Forecast	Over/Under Forecast (Spring 2020)	
Jan-20	348,772	-	-	-	-	-	-
Feb-20	349,244	-	-	-	-	-	-
Mar-20	361,221	-	-	-	349,777	11,444	3.3%
Apr-20	398,593	-	-	-	350,144	48,449	13.8%
May-20	410,416	-	-	-	350,042	60,374	17.2%
Jun-20	418,494	-	-	-	350,395	68,099	19.4%
Jul-20	423,702	-	-	-	350,528	73,174	20.9%
Aug-20	422,065	449,052	-26,987	-6.0%	351,186	70,879	20.2%
Sep-20	426,365	450,032	-23,667	-5.3%	351,034	75,331	21.5%
Oct-20	394,703	451,222	-56,519	-12.5%	351,818	42,885	12.2%
Nov-20	385,451	451,317	-65,866	-14.6%	351,940	33,511	9.5%
Dec-20	-	451,762	-	-	352,211	-	-
Jan-21	-	457,523	-	-	350,853	-	-

DECEMBER 2020

Temporary Assistance for Needy Families - One Parent

The Temporary Assistance for Needy Families (TANF) One Parent program provides services and cash grants to low-income families with one parent living in the home to help them become self-sufficient.



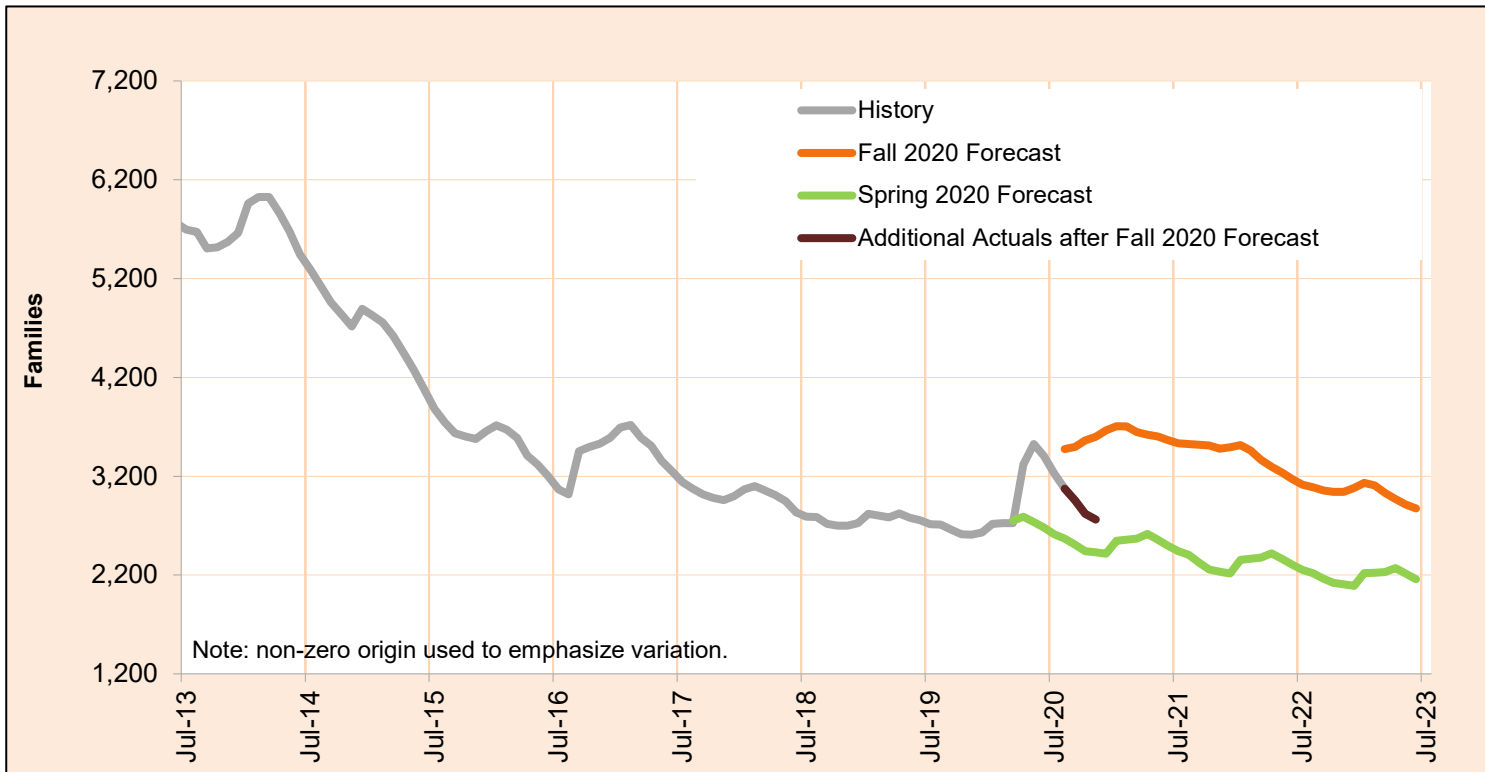
Month	Actual	Fall 2020 Forecast	Over/Under Forecast (Fall 2020)	Spring 2020 Forecast	Over/Under Forecast (Spring 2020)
Jan-20	15,794	-	-	-	-
Feb-20	15,866	-	-	-	-
Mar-20	15,692	-	-	15,723	-31 -0.2%
Apr-20	16,342	-	-	15,691	651 4.1%
May-20	16,450	-	-	15,735	715 4.5%
Jun-20	16,198	-	-	15,791	407 2.6%
Jul-20	15,822	-	-	15,905	-83 -0.5%
Aug-20	15,520	16,414	-894 -5.4%	16,042	-522 -3.3%
Sep-20	15,235	16,557	-1,322 -8.0%	16,038	-803 -5.0%
Oct-20	14,968	16,875	-1,907 -11.3%	16,158	-1,190 -7.4%
Nov-20	14,545	17,072	-2,527 -14.8%	16,088	-1,543 -9.6%
Dec-20	-	17,311	-	16,028	-
Jan-21	-	17,569	-	15,954	-

NOTE: In order to deal with an overlap in monthly data reporting between TANF and the after-TANF benefit known as Employment Payments, TANF caseload counts have been revised, starting in May 2016. In any month where an Employment Payment has been authorized, the TANF case has been removed from the caseload count. This eliminates the possibility of duplicate counts.

DECEMBER 2020

Temporary Assistance for Needy Families - Two Parent

The Temporary Assistance for Needy Families (TANF) Two Parent program provides services and cash grants to low-income families with two parents in the home to help them become self-sufficient.



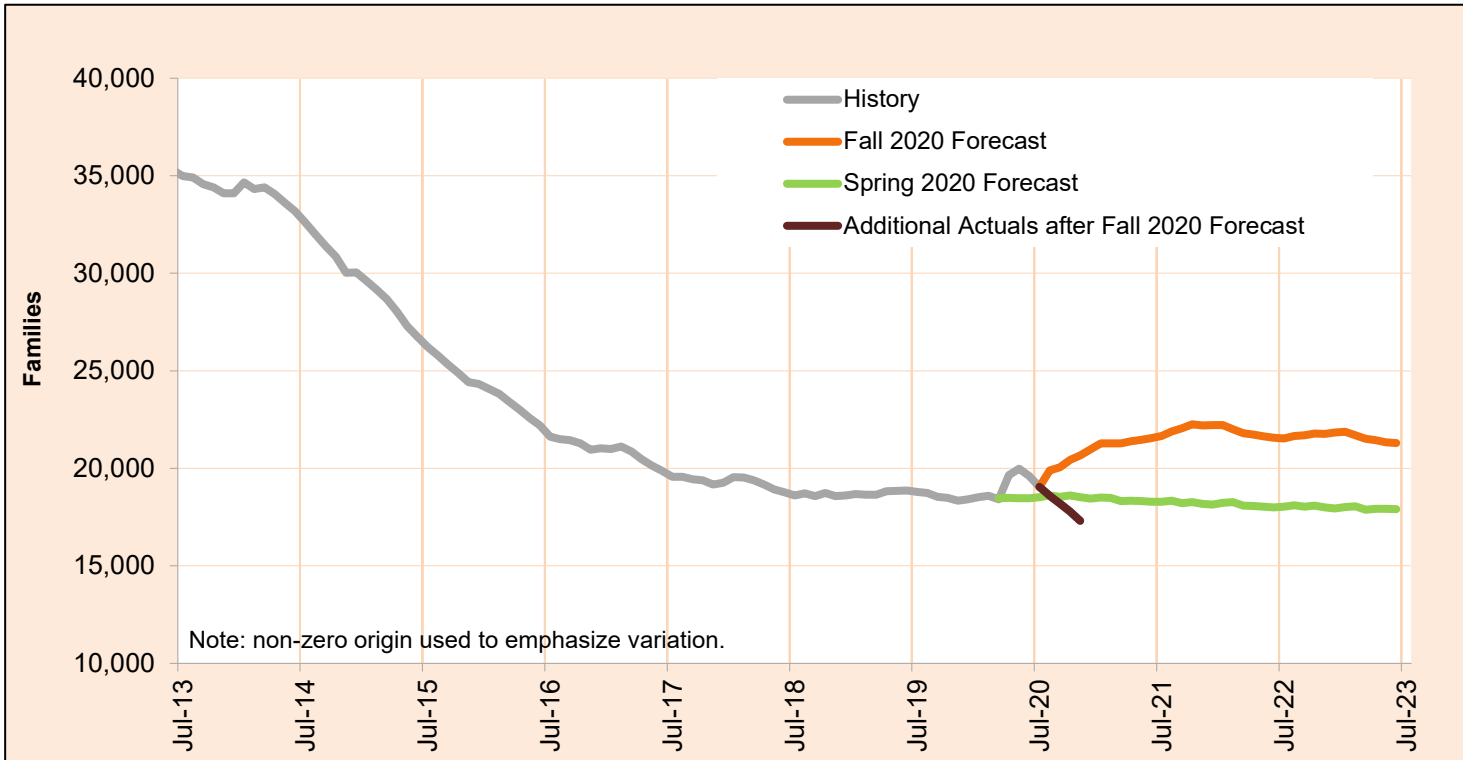
Month	Actual	Fall 2020 Forecast	Over/Under Forecast (Fall 2020)		Spring 2020 Forecast	Over/Under Forecast (Spring 2020)	
Jan-20	2,718	-	-	-	-	-	-
Feb-20	2,725	-	-	-	-	-	-
Mar-20	2,724	-	-	-	2,749	-25	-0.9%
Apr-20	3,320	-	-	-	2,790	530	19.0%
May-20	3,525	-	-	-	2,736	789	28.8%
Jun-20	3,405	-	-	-	2,680	725	27.1%
Jul-20	3,229	-	-	-	2,611	618	23.7%
Aug-20	3,074	3,473	-399	-11.5%	2,569	505	19.7%
Sep-20	2,953	3,495	-542	-15.5%	2,506	447	17.8%
Oct-20	2,818	3,561	-743	-20.9%	2,443	375	15.3%
Nov-20	2,762	3,600	-838	-23.3%	2,430	332	13.7%
Dec-20	-	3,664	-	-	2,414	-	-
Jan-21	-	3,706	-	-	2,546	-	-

NOTE: In order to deal with an overlap in monthly data reporting between TANF and the after-TANF benefit known as Employment Payments, TANF caseload counts have been revised, starting in May 2016. In any month where an Employment Payment has been authorized, the TANF case has been removed from the caseload count. This eliminates the possibility of duplicate counts.

DECEMBER 2020

Total Temporary Assistance for Needy Families

The Temporary Assistance for Needy Families (TANF) program provides services and cash grants to low-income families with children to help them become self-sufficient.



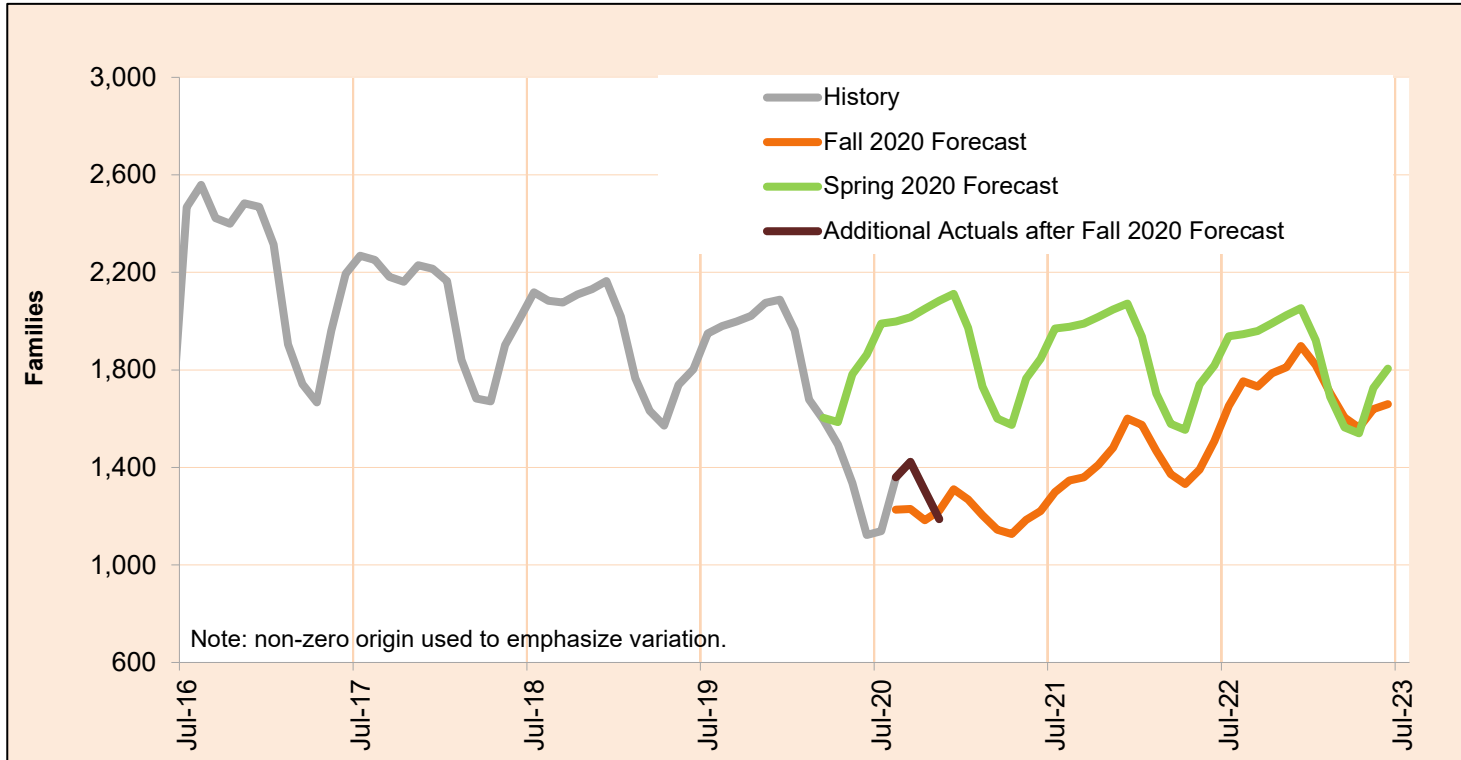
Month	Actual	Fall 2020 Forecast	Over/Under Forecast (Fall 2020)		Spring 2020 Forecast	Over/Under Forecast (Spring 2020)	
Jan-20	18,512	-	-	-	-	-	-
Feb-20	18,591	-	-	-	-	-	-
Mar-20	18,416	-	-	-	18,472	-56	-0.3%
Apr-20	19,662	-	-	-	18,481	1,181	6.4%
May-20	19,975	-	-	-	18,471	1,504	8.1%
Jun-20	19,603	-	-	-	18,471	1,132	6.1%
Jul-20	19,051	-	-	-	18,516	535	2.9%
Aug-20	18,594	19,887	-1,293	-6.5%	18,611	-17	-0.1%
Sep-20	18,188	20,052	-1,864	-9.3%	18,544	-356	-1.9%
Oct-20	17,786	20,436	-2,650	-13.0%	18,601	-815	-4.4%
Nov-20	17,307	20,672	-3,365	-16.3%	18,518	-1,211	-6.5%
Dec-20	-	20,975	-	-	18,442	-	-
Jan-21	-	21,275	-	-	18,500	-	-

NOTE: In order to deal with an overlap in monthly data reporting between TANF and the after-TANF benefit known as Employment Payments, TANF caseload counts have been revised, starting in May 2016. In any month where an Employment Payment has been authorized, the TANF case has been removed from the caseload count. This eliminates the possibility of duplicate counts.

DECEMBER 2020

TANF Employment Payments

TANF Employment Payments (TANF-EP) provides short-term financial assistance (3 months) for families after exiting TANF. Cases began transitioning to TANF-EP in May, 2016.

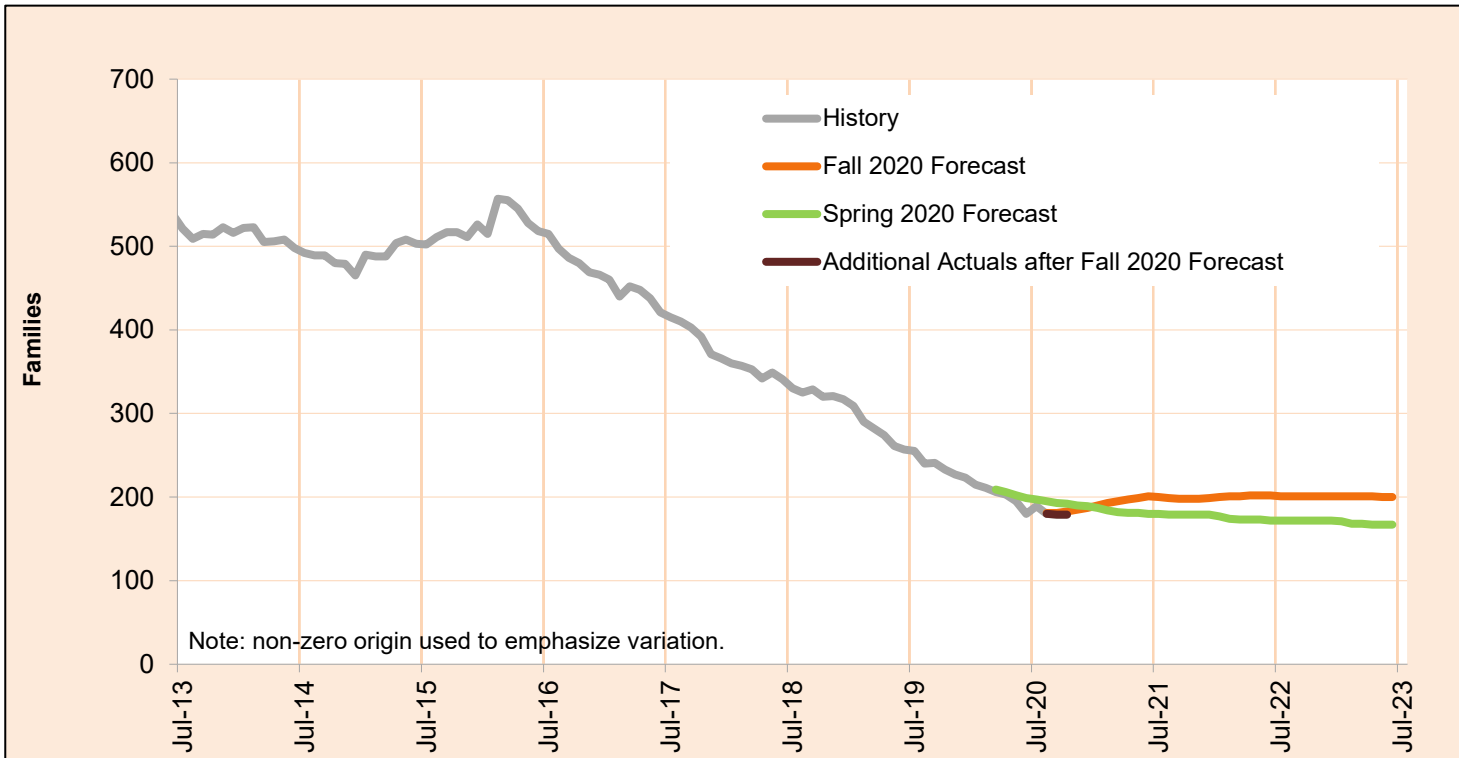


Month	Actual	Fall 2020 Forecast	Over/Under Forecast (Fall 2020)		Spring 2020 Forecast	Over/Under Forecast (Spring 2020)	
Jan-20	1,962	-	-	-	-	-	-
Feb-20	1,679	-	-	-	-	-	-
Mar-20	1,595	-	-	-	1,603	-8	-0.5%
Apr-20	1,493	-	-	-	1,586	-93	-5.9%
May-20	1,337	-	-	-	1,782	-445	-25.0%
Jun-20	1,123	-	-	-	1,863	-740	-39.7%
Jul-20	1,139	-	-	-	1,990	-851	-42.8%
Aug-20	1,359	1,227	132	10.8%	1,999	-640	-32.0%
Sep-20	1,423	1,230	193	15.7%	2,016	-593	-29.4%
Oct-20	1,304	1,184	120	10.1%	2,051	-747	-36.4%
Nov-20	1,188	1,221	-33	-2.7%	2,084	-896	-43.0%
Dec-20	-	1,310	-	-	2,112	-	-
Jan-21	-	1,267	-	-	1,972	-	-

DECEMBER 2020

Pre-SSI

Pre-SSI provides temporary benefits for families while they apply for SSI.

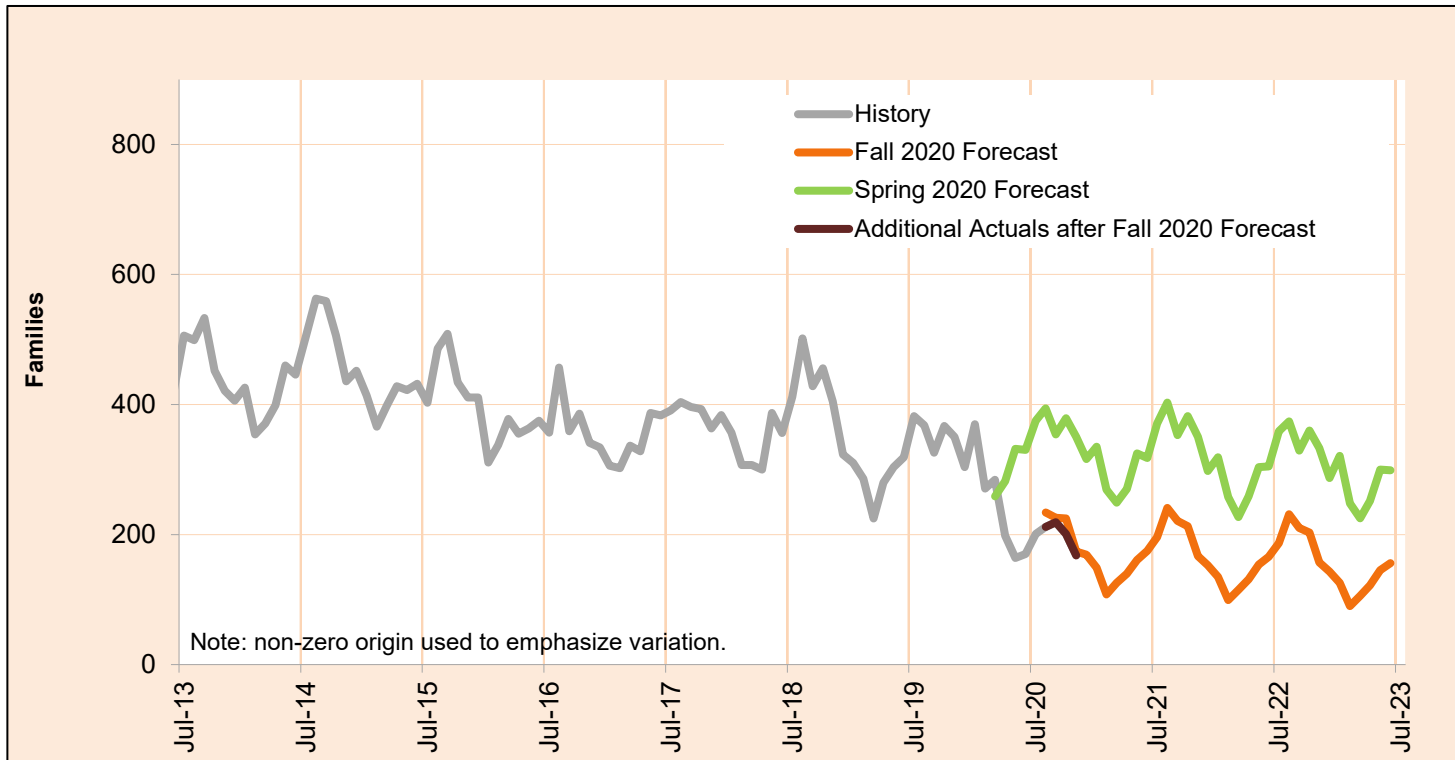


Month	Actual	Fall 2020 Forecast	Over/Under Forecast (Fall 2020)		Spring 2020 Forecast	Over/Under Forecast (Spring 2020)	
Jan-20	215	-	-	-	-	-	-
Feb-20	211	-	-	-	-	-	-
Mar-20	206	-	-	-	209	-3	-1.4%
Apr-20	203	-	-	-	206	-3	-1.5%
May-20	195	-	-	-	202	-7	-3.5%
Jun-20	180	-	-	-	199	-19	-9.5%
Jul-20	189	-	-	-	197	-8	-4.1%
Aug-20	180	181	-1	-0.6%	195	-15	-7.7%
Sep-20	179	181	-2	-1.1%	193	-14	-7.3%
Oct-20	179	183	-4	-2.2%	192	-13	-6.8%
Nov-20	-	185	-	-	190	-	-
Dec-20	-	187	-	-	189	-	-
Jan-21	-	190	-	-	187	-	-

DECEMBER 2020

Temporary Assistance for Domestic Violence Survivors-With Payment

Temporary Assistance for Domestic Violence Survivors (TA-DVS) provides short-term financial assistance (up to 90 days) for individuals fleeing an abusive partner or family member.

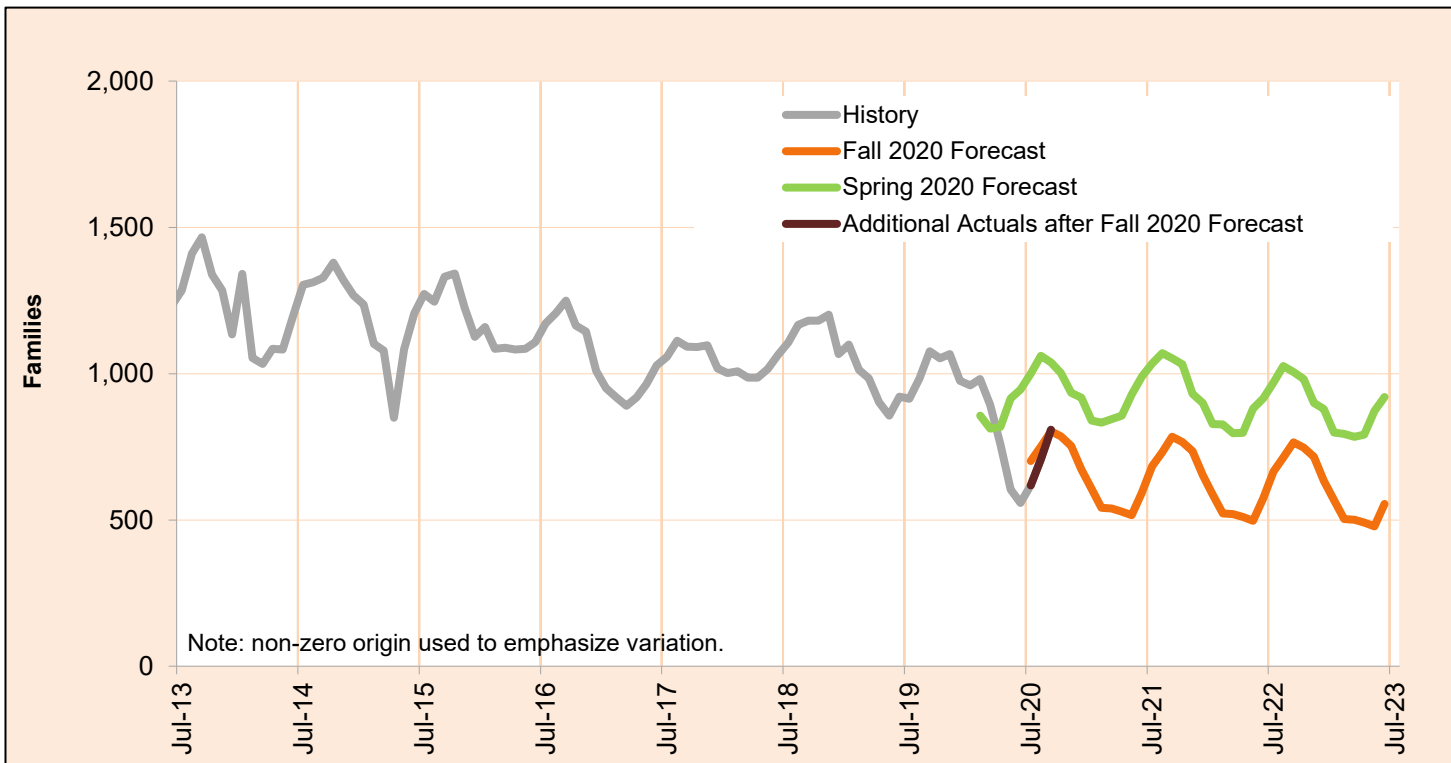


Month	Actual	Fall 2020 Forecast	Over/Under Forecast (Fall 2020)		Spring 2020 Forecast	Over/Under Forecast (Spring 2020)	
Jan-20	370	-	-	-	-	-	-
Feb-20	271	-	-	-	-	-	-
Mar-20	284	-	-	-	259	25	9.7%
Apr-20	198	-	-	-	282	-84	-29.8%
May-20	164	-	-	-	332	-168	-50.6%
Jun-20	170	-	-	-	330	-160	-48.5%
Jul-20	201	-	-	-	375	-174	-46.4%
Aug-20	212	234	-22	-9.4%	394	-182	-46.2%
Sep-20	219	226	-7	-3.1%	354	-135	-38.1%
Oct-20	201	225	-24	-10.7%	379	-178	-47.0%
Nov-20	168	174	-6	-3.4%	350	-182	-52.0%
Dec-20	-	169	-	-	316	-	-
Jan-21	-	149	-	-	335	-	-

DECEMBER 2020

Temporary Assistance for Domestic Violence Survivors-Without Payment

Temporary Assistance for Domestic Violence Survivors Without Payment represents individuals fleeing an abusive partner or family member who did not accept short-term financial assistance, but did receive other forms of aid including referrals to other services.



Month	Actual	Fall 2020 Forecast	Over/Under Forecast (Fall 2020)		Spring 2020 Forecast	Over/Under Forecast (Spring 2020)	
Jan-20	960	-	-	-	-	-	-
Feb-20	981	-	-	-	857	124	14.5%
Mar-20	892	-	-	-	812	80	9.9%
Apr-20	758	-	-	-	818	-60	-7.3%
May-20	604	-	-	-	916	-312	-34.1%
Jun-20	558	-	-	-	945	-387	-41.0%
Jul-20	618	702	-84	-12.0%	1,000	-382	-38.2%
Aug-20	707	751	-44	-5.9%	1,061	-354	-33.4%
Sep-20	808	803	5	0.6%	1,038	-230	-22.2%
Oct-20	-	785	-	-	1,002	-	-
Nov-20	-	753	-	-	935	-	-
Dec-20	-	672	-	-	918	-	-
Jan-21	-	605	-	-	840	-	-