

FEBRUARY 2021

Note: The changes in public policy, behavior, and economics due to the COVID-19 crisis have created greater uncertainty than is usually experienced in a forecast cycle. Details concerning the assumptions underlying all forecasted caseload areas are contained in the Fall 2020 DHS-OHA Caseload Forecast report, which was released at the end of October.

The rollout of the new Integrated Eligibility (I.E.) system has led to instability in counts of some programs in Self-Sufficiency. In other cases, data were not available for this monthly update. As a result, data may be updated or revised in subsequent variance reports, as known database issues are addressed.

Total Temporary Assistance for Needy Families

Month	Actual	Fall 2020 Forecast	Over/Under Forecast	%
Aug-20	18,603	19,887	-1,284	-6.5%
Sep-20	18,193	20,052	-1,859	-9.3%
Oct-20	17,799	20,436	-2,637	-12.9%
Nov-20	17,590	20,672	-3,082	-14.9%
Dec-20	17,470	20,975	-3,505	-16.7%
Jan-21	17,036	21,275	-4,239	-19.9%

TANF: One-Parent

Month	Actual	Fall 2020 Forecast	Over/Under Forecast	%
Aug-20	15,529	16,414	-885	-5.4%
Sep-20	15,242	16,557	-1,315	-7.9%
Oct-20	14,980	16,875	-1,895	-11.2%
Nov-20	14,747	17,072	-2,325	-13.6%
Dec-20	14,545	17,311	-2,766	-16.0%
Jan-21	14,167	17,569	-3,402	-19.4%

TANF: Two-Parent

Month	Actual	Fall 2020 Forecast	Over/Under Forecast	%
Aug-20	3,074	3,473	-399	-11.5%
Sep-20	2,951	3,495	-544	-15.6%
Oct-20	2,819	3,561	-742	-20.8%
Nov-20	2,843	3,600	-757	-21.0%
Dec-20	2,925	3,664	-739	-20.2%
Jan-21	2,869	3,706	-837	-22.6%

TANF Employment Payments

Month	Actual	Fall 2020 Forecast	Over/Under Forecast	%
Aug-20	1,359	1,227	132	10.8%
Sep-20	1,425	1,230	195	15.9%
Oct-20	1,307	1,184	123	10.4%
Nov-20	1,203	1,222	-19	-1.6%
Dec-20	988	1,311	-323	-24.6%
Jan-21	911	1,267	-356	-28.1%

Temporary Assistance for Domestic Violence Survivors - with Payment (Families)

Month	Actual	Fall 2020 Forecast	Over/Under Forecast	%
Aug-20	222	234	-12	-5.1%
Sep-20	236	226	10	4.4%
Oct-20	226	225	1	0.4%
Nov-20	310	174	136	78.2%
Dec-20	450	169	281	166.3%
Jan-21	537	149	388	260.4%

Temporary Assistance for Domestic Violence Survivors - without Payment (Families)

Month	Actual	Fall 2020 Forecast	Over/Under Forecast	%
Jul-20	618	702	-84	-12.0%
Aug-20	707	751	-44	-5.9%
Sep-20	808	803	5	0.6%
Oct-20	795	785	10	1.3%
Nov-20	-	753	-	-
Dec-20	-	671	-	-

Pre-SSI

Month	Actual	Fall 2020 Forecast	Over/Under Forecast	%
Aug-20	180	181	-1	-0.6%
Sep-20	179	181	-2	-1.1%
Oct-20	183	183	0	0.0%
Nov-20	184	185	-1	-0.5%
Dec-20	175	187	-12	-6.4%
Jan-21	165	190	-25	-13.2%

Total Supplemental Nutrition Assistance Programs

Month	Actual	Fall 2020 Forecast	Over/Under Forecast	%
Aug-20	422,109	449,052	-26,943	-6.0%
Sep-20	426,431	450,032	-23,601	-5.2%
Oct-20	394,583	451,222	-56,639	-12.6%
Nov-20	411,296	451,317	-40,021	-8.9%
Dec-20	421,659	451,762	-30,103	-6.7%
Jan-21	428,357	457,523	-29,166	-6.4%

FEBRUARY 2021

SNAP: Aging and People with Disabilities

Month	Actual	Fall 2020 Forecast	Over/Under Forecast	%
Aug-20	137,044	138,559	-1,515	-1.1%
Sep-20	136,791	138,639	-1,848	-1.3%
Oct-20	136,217	138,774	-2,557	-1.8%
Nov-20	142,805	138,947	3,858	2.8%
Dec-20	146,100	139,186	6,914	5.0%
Jan-21	147,170	139,779	7,391	5.3%

SNAP: Self Sufficiency

Month	Actual	Fall 2020 Forecast	Over/Under Forecast	%
Aug-20	285,065	310,493	-25,428	-8.2%
Sep-20	289,640	311,393	-21,753	-7.0%
Oct-20	258,366	312,448	-54,082	-17.3%
Nov-20	268,491	312,370	-43,879	-14.0%
Dec-20	275,559	312,576	-37,017	-11.8%
Jan-21	281,187	317,744	-36,557	-11.5%

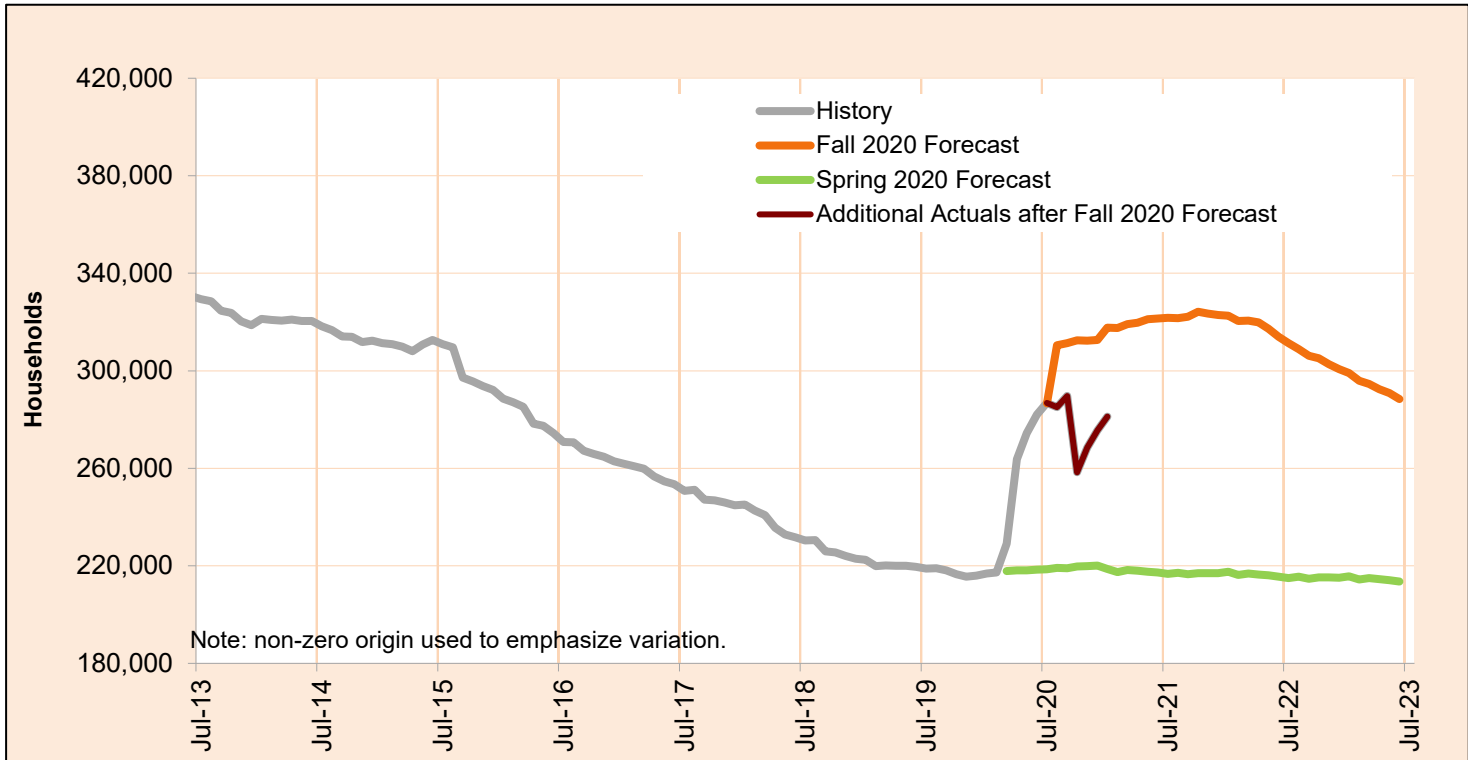
Employment Related Daycare (Families)

Month	Actual	Forecast Discontinued
Aug-20	6,890	
Sep-20	7,124	
Oct-20	7,524	
Nov-20	7,847	
Dec-20	7,944	
Jan-21	8,007	

FEBRUARY 2021

SNAP: Self Sufficiency

This program supplements food budgets for low-income families, individuals and seniors and people with disabilities.

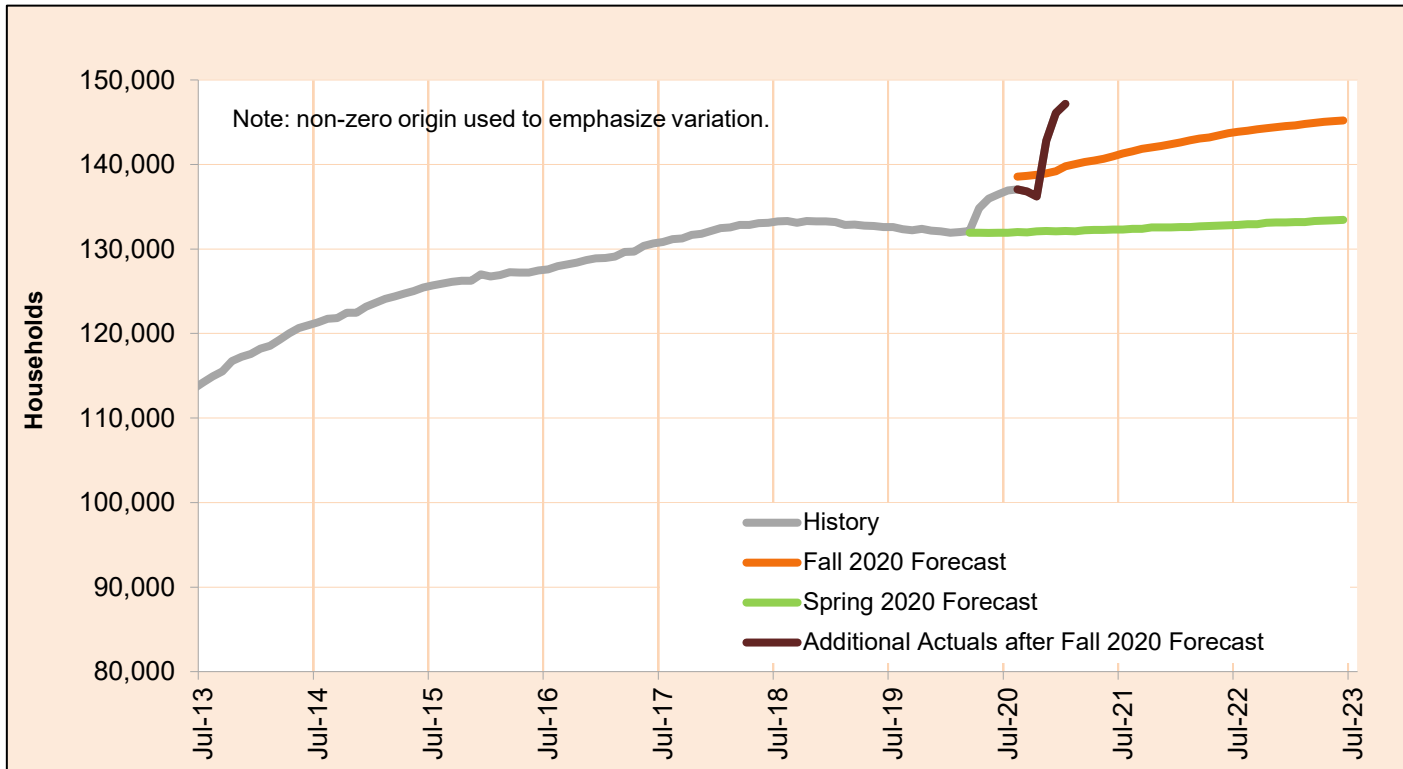


Month	Actual	Fall 2020 Forecast	Over/Under Forecast (Fall 2020)	Spring 2020 Forecast	Over/Under Forecast (Spring 2020)
Mar-20	229,088	-	-	217,840	11,248 5.2%
Apr-20	263,760	-	-	218,210	45,550 20.9%
May-20	274,472	-	-	218,138	56,334 25.8%
Jun-20	282,021	-	-	218,480	63,541 29.1%
Jul-20	286,779	-	-	218,601	68,178 31.2%
Aug-20	285,065	310,493	-25,428 -8.2%	219,200	65,865 30.0%
Sep-20	289,640	311,393	-21,753 -7.0%	219,067	70,573 32.2%
Oct-20	258,366	312,448	-54,082 -17.3%	219,722	38,644 17.6%
Nov-20	268,491	312,370	-43,879 -14.0%	219,816	48,675 22.1%
Dec-20	275,559	312,576	-37,017 -11.8%	220,109	55,450 25.2%
Jan-21	281,187	317,744	-36,557 -11.5%	218,718	62,469 28.6%
Feb-21	-	317,534	-	217,385	-
Mar-21	-	319,091	-	218,331	-

FEBRUARY 2021

SNAP: Aging and People with Disabilities

This program supplements food budgets for low-income families, individuals and seniors and people with disabilities.

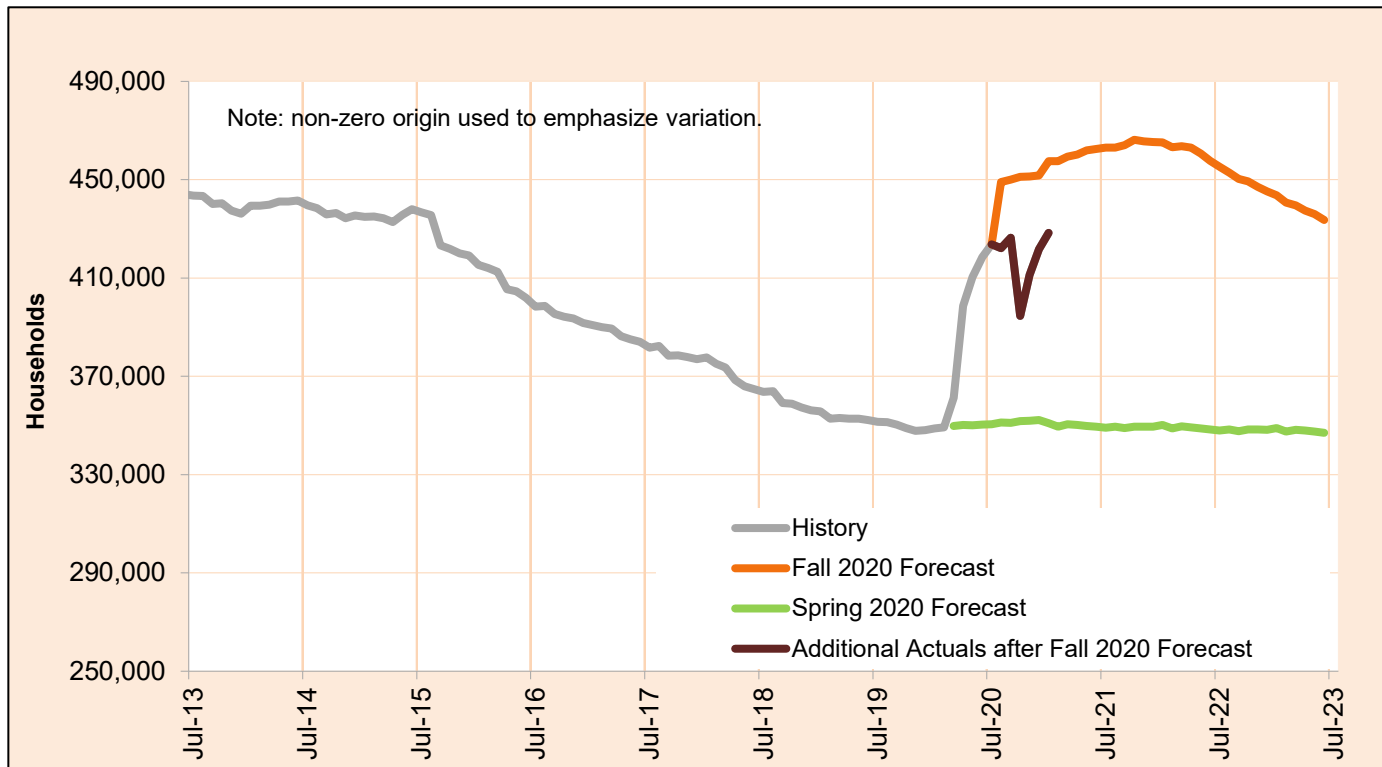


Month	Actual	Fall 2020 Forecast	Over/Under Forecast (Fall 2020)		Spring 2020 Forecast	Over/Under Forecast (Spring 2020)	
Mar-20	132,133	-	-	-	131,937	196	0.1%
Apr-20	134,833	-	-	-	131,934	2,899	2.2%
May-20	135,944	-	-	-	131,904	4,040	3.1%
Jun-20	136,473	-	-	-	131,915	4,558	3.5%
Jul-20	136,923	-	-	-	131,927	4,996	3.8%
Aug-20	137,044	138,559	-1,515	-1.1%	131,986	5,058	3.8%
Sep-20	136,791	138,639	-1,848	-1.3%	131,967	4,824	3.7%
Oct-20	136,217	138,774	-2,557	-1.8%	132,096	4,121	3.1%
Nov-20	142,805	138,947	3,858	2.8%	132,124	10,681	8.1%
Dec-20	146,100	139,186	6,914	5.0%	132,102	13,998	10.6%
Jan-21	147,170	139,779	7,391	5.3%	132,135	15,035	11.4%
Feb-21	-	140,056	-	-	132,105	-	-
Mar-21	-	140,274	-	-	132,212	-	-

FEBRUARY 2021

Total Supplemental Nutrition Assistance Programs

This program supplements food budgets for low-income families, individuals and seniors and people with disabilities.

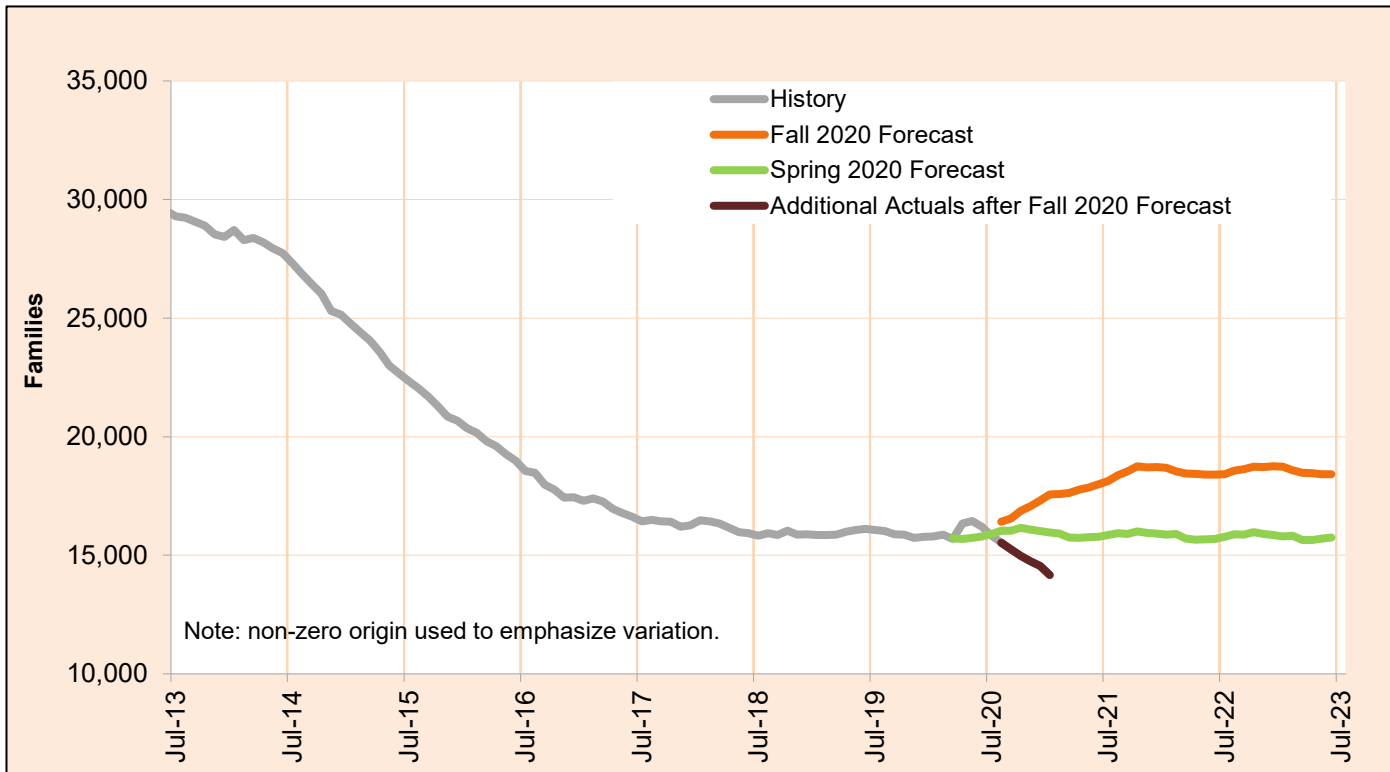


Month	Actual	Fall 2020 Forecast	Over/Under Forecast (Fall 2020)		Spring 2020 Forecast	Over/Under Forecast (Spring 2020)	
Mar-20	361,221	-	-	-	349,777	11,444	3.3%
Apr-20	398,593	-	-	-	350,144	48,449	13.8%
May-20	410,416	-	-	-	350,042	60,374	17.2%
Jun-20	418,494	-	-	-	350,395	68,099	19.4%
Jul-20	423,702	-	-	-	350,528	73,174	20.9%
Aug-20	422,109	449,052	-26,943	-6.0%	351,186	70,923	20.2%
Sep-20	426,431	450,032	-23,601	-5.2%	351,034	75,397	21.5%
Oct-20	394,583	451,222	-56,639	-12.6%	351,818	42,765	12.2%
Nov-20	411,296	451,317	-40,021	-8.9%	351,940	59,356	16.9%
Dec-20	421,659	451,762	-30,103	-6.7%	352,211	69,448	19.7%
Jan-21	428,357	457,523	-29,166	-6.4%	350,853	77,504	22.1%
Feb-21	-	457,590	-	-	349,490	-	-
Mar-21	-	459,365	-	-	350,543	-	-

FEBRUARY 2021

Temporary Assistance for Needy Families - One Parent

The Temporary Assistance for Needy Families (TANF) One Parent program provides services and cash grants to low-income families with one parent living in the home to help them become self-sufficient.



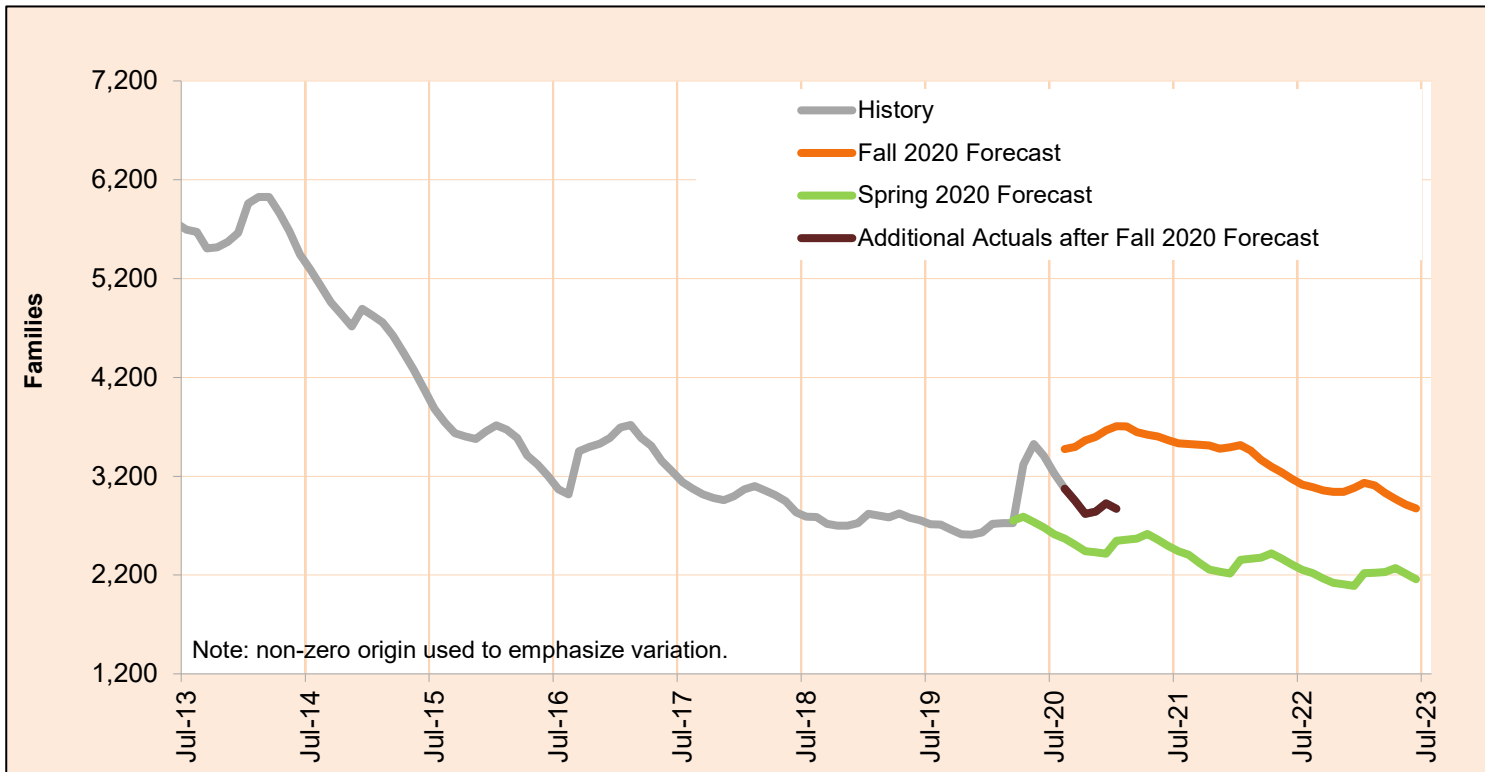
Month	Actual	Fall 2020 Forecast	Over/Under Forecast (Fall 2020)	Spring 2020 Forecast	Over/Under Forecast (Spring 2020)
Mar-20	15,692	-	-	15,723	-31 -0.2%
Apr-20	16,342	-	-	15,691	651 4.1%
May-20	16,450	-	-	15,735	715 4.5%
Jun-20	16,198	-	-	15,791	407 2.6%
Jul-20	15,822	-	-	15,905	-83 -0.5%
Aug-20	15,529	16,414	-885 -5.4%	16,042	-513 -3.2%
Sep-20	15,242	16,557	-1,315 -7.9%	16,038	-796 -5.0%
Oct-20	14,980	16,875	-1,895 -11.2%	16,158	-1,178 -7.3%
Nov-20	14,747	17,072	-2,325 -13.6%	16,088	-1,341 -8.3%
Dec-20	14,545	17,311	-2,766 -16.0%	16,028	-1,483 -9.3%
Jan-21	14,167	17,569	-3,402 -19.4%	15,954	-1,787 -11.2%
Feb-21	-	17,581	-	15,921	-
Mar-21	-	17,633	-	15,754	-

NOTE: In order to deal with an overlap in monthly data reporting between TANF and the after-TANF benefit known as Employment Payments, TANF caseload counts have been revised, starting in May 2016. In any month where an Employment Payment has been authorized, the TANF case has been removed from the caseload count. This eliminates the possibility of duplicate counts.

FEBRUARY 2021

Temporary Assistance for Needy Families - Two Parent

The Temporary Assistance for Needy Families (TANF) Two Parent program provides services and cash grants to low-income families with two parents in the home to help them become self-sufficient.



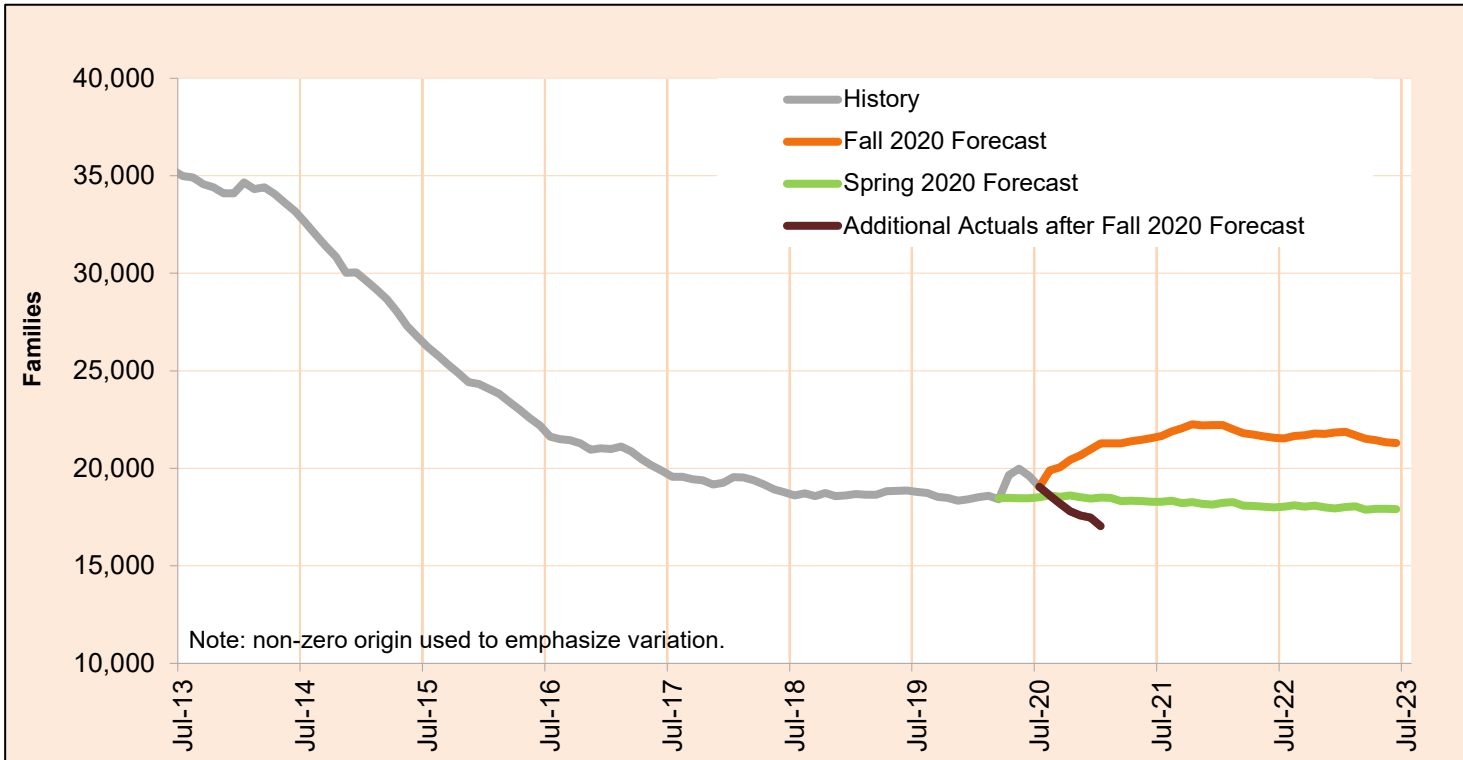
Month	Actual	Fall 2020 Forecast	Over/Under Forecast (Fall 2020)		Spring 2020 Forecast	Over/Under Forecast (Spring 2020)	
Mar-20	2,724	-	-	-	2,749	-25	-0.9%
Apr-20	3,320	-	-	-	2,790	530	19.0%
May-20	3,525	-	-	-	2,736	789	28.8%
Jun-20	3,405	-	-	-	2,680	725	27.1%
Jul-20	3,229	-	-	-	2,611	618	23.7%
Aug-20	3,074	3,473	-399	-11.5%	2,569	505	19.7%
Sep-20	2,951	3,495	-544	-15.6%	2,506	445	17.8%
Oct-20	2,819	3,561	-742	-20.8%	2,443	376	15.4%
Nov-20	2,843	3,600	-757	-21.0%	2,430	413	17.0%
Dec-20	2,925	3,664	-739	-20.2%	2,414	511	21.2%
Jan-21	2,869	3,706	-837	-22.6%	2,546	323	12.7%
Feb-21	-	3,703	-	-	2,558	-	-
Mar-21	-	3,646	-	-	2,568	-	-

NOTE: In order to deal with an overlap in monthly data reporting between TANF and the after-TANF benefit known as Employment Payments, TANF caseload counts have been revised, starting in May 2016. In any month where an Employment Payment has been authorized, the TANF case has been removed from the caseload count. This eliminates the possibility of duplicate counts.

FEBRUARY 2021

Total Temporary Assistance for Needy Families

The Temporary Assistance for Needy Families (TANF) program provides services and cash grants to low-income families with children to help them become self-sufficient.



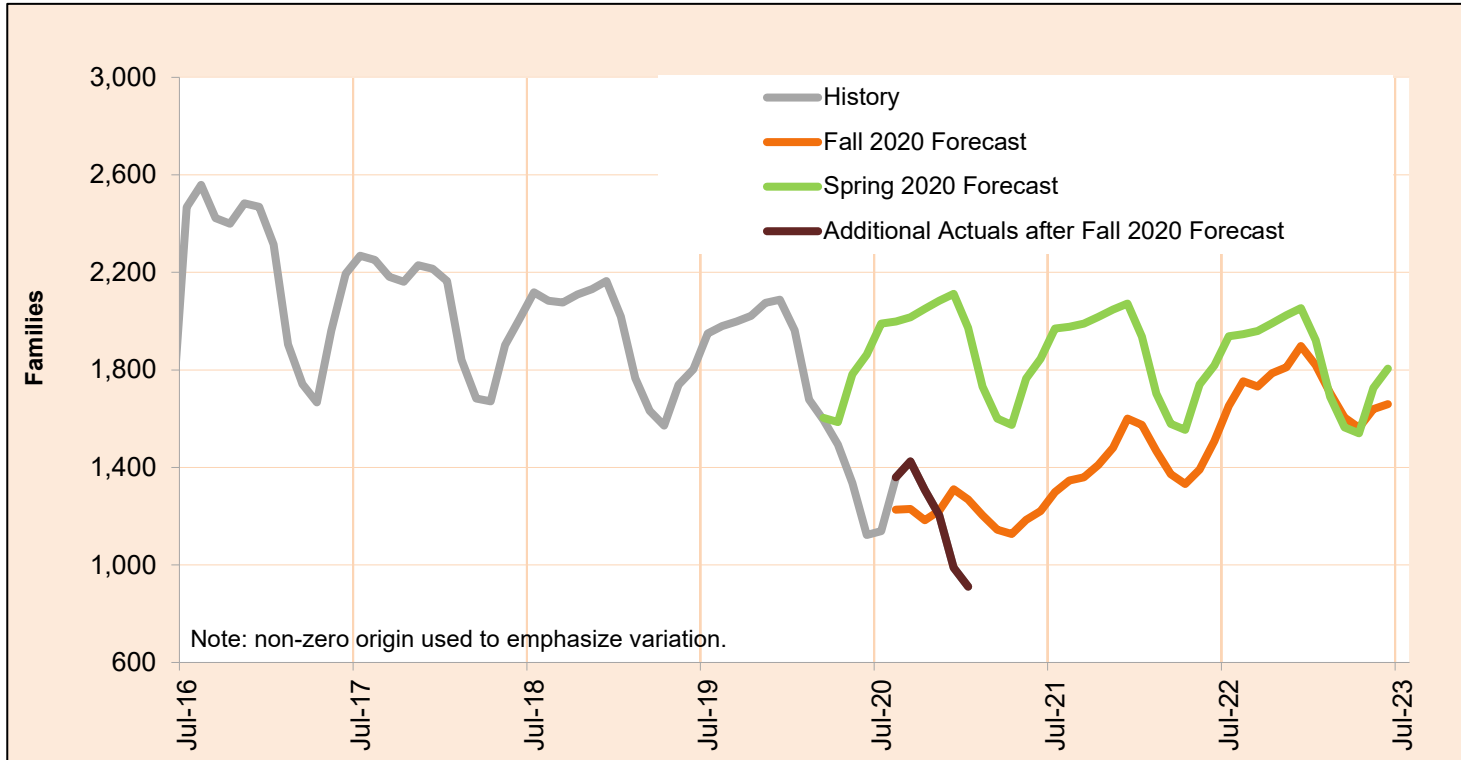
Month	Actual	Fall 2020 Forecast	Over/Under Forecast (Fall 2020)		Spring 2020 Forecast	Over/Under Forecast (Spring 2020)	
Mar-20	18,416	-	-	-	18,472	-56	-0.3%
Apr-20	19,662	-	-	-	18,481	1,181	6.4%
May-20	19,975	-	-	-	18,471	1,504	8.1%
Jun-20	19,603	-	-	-	18,471	1,132	6.1%
Jul-20	19,051	-	-	-	18,516	535	2.9%
Aug-20	18,603	19,887	-1,284	-6.5%	18,611	-8	0.0%
Sep-20	18,193	20,052	-1,859	-9.3%	18,544	-351	-1.9%
Oct-20	17,799	20,436	-2,637	-12.9%	18,601	-802	-4.3%
Nov-20	17,590	20,672	-3,082	-14.9%	18,518	-928	-5.0%
Dec-20	17,470	20,975	-3,505	-16.7%	18,442	-972	-5.3%
Jan-21	17,036	21,275	-4,239	-19.9%	18,500	-1,464	-7.9%
Feb-21	-	21,284	-	-	18,479	-	-
Mar-21	-	21,279	-	-	18,322	-	-

NOTE: In order to deal with an overlap in monthly data reporting between TANF and the after-TANF benefit known as Employment Payments, TANF caseload counts have been revised, starting in May 2016. In any month where an Employment Payment has been authorized, the TANF case has been removed from the caseload count. This eliminates the possibility of duplicate counts.

FEBRUARY 2021

TANF Employment Payments

TANF Employment Payments (TANF-EP) provides short-term financial assistance (3 months) for families after exiting TANF. Cases began transitioning to TANF-EP in May, 2016.

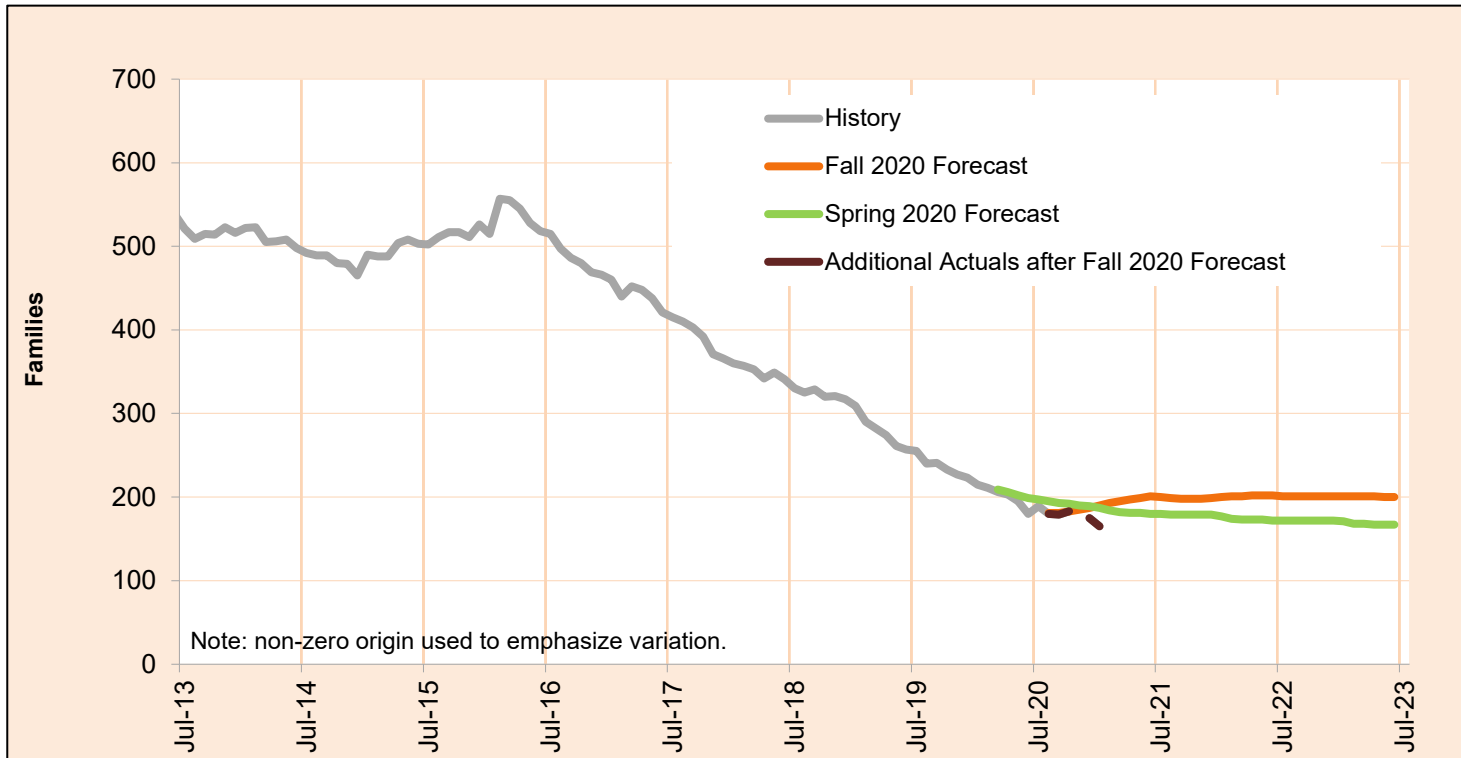


Month	Actual	Fall 2020 Forecast	Over/Under Forecast (Fall 2020)		Spring 2020 Forecast	Over/Under Forecast (Spring 2020)	
Mar-20	1,595	-	-	-	1,603	-8	-0.5%
Apr-20	1,493	-	-	-	1,586	-93	-5.9%
May-20	1,337	-	-	-	1,782	-445	-25.0%
Jun-20	1,123	-	-	-	1,863	-740	-39.7%
Jul-20	1,139	-	-	-	1,990	-851	-42.8%
Aug-20	1,359	1,227	132	10.8%	1,999	-640	-32.0%
Sep-20	1,425	1,230	195	15.9%	2,016	-591	-29.3%
Oct-20	1,307	1,184	123	10.4%	2,051	-744	-36.3%
Nov-20	1,203	1,222	-19	-1.6%	2,084	-881	-42.3%
Dec-20	988	1,311	-323	-24.6%	2,112	-1,124	-53.2%
Jan-21	911	1,267	-356	-28.1%	1,972	-1,061	-53.8%
Feb-21	-	1,202	-	-	1,731	-	-
Mar-21	-	1,144	-	-	1,601	-	-

FEBRUARY 2021

Pre-SSI

Pre-SSI provides temporary benefits for families while they apply for SSI.

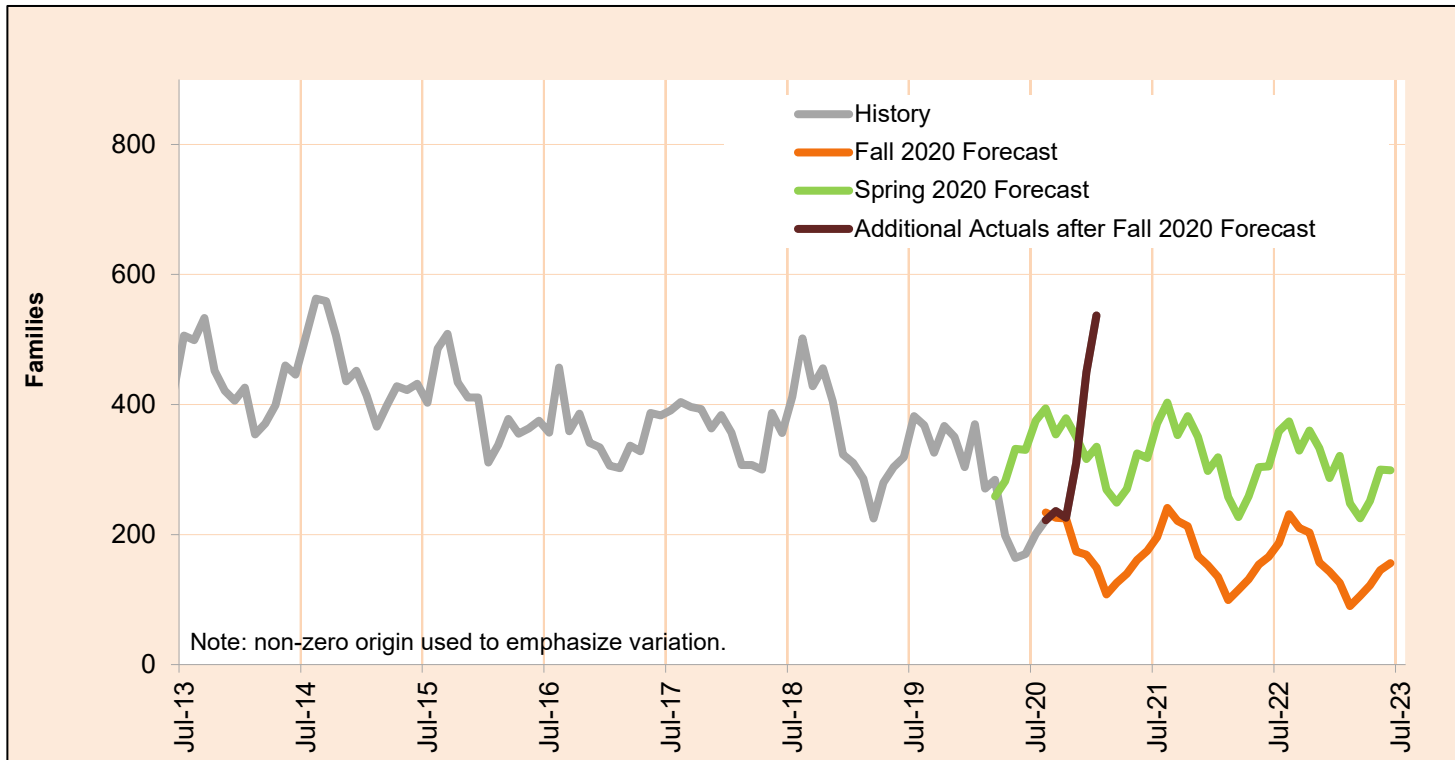


Month	Actual	Fall 2020 Forecast	Over/Under Forecast (Fall 2020)		Spring 2020 Forecast	Over/Under Forecast (Spring 2020)	
Mar-20	206	-	-	-	209	-3	-1.4%
Apr-20	203	-	-	-	206	-3	-1.5%
May-20	195	-	-	-	202	-7	-3.5%
Jun-20	180	-	-	-	199	-19	-9.5%
Jul-20	189	-	-	-	197	-8	-4.1%
Aug-20	180	181	-1	-0.6%	195	-15	-7.7%
Sep-20	179	181	-2	-1.1%	193	-14	-7.3%
Oct-20	183	183	0	0.0%	192	-9	-4.7%
Nov-20	184	185	-1	-0.5%	190	-6	-3.2%
Dec-20	175	187	-12	-6.4%	189	-14	-7.4%
Jan-21	165	190	-25	-13.2%	187	-22	-11.8%
Feb-21	-	193	-	-	184	-	-
Mar-21	-	195	-	-	182	-	-

FEBRUARY 2021

Temporary Assistance for Domestic Violence Survivors-With Payment

Temporary Assistance for Domestic Violence Survivors (TA-DVS) provides short-term financial assistance (up to 90 days) for individuals fleeing an abusive partner or family member.

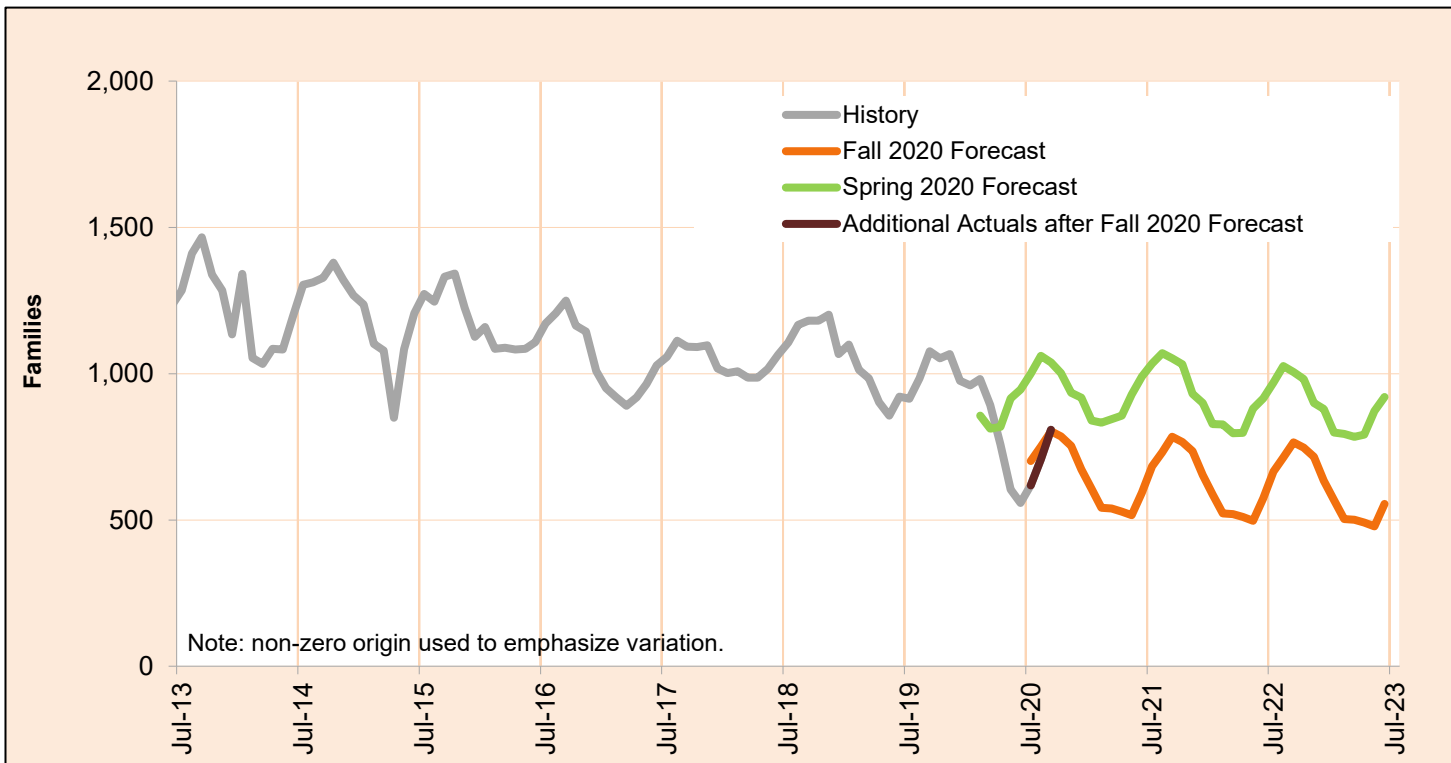


Month	Actual	Fall 2020 Forecast	Over/Under Forecast (Fall 2020)		Spring 2020 Forecast	Over/Under Forecast (Spring 2020)	
Mar-20	284	-	-	-	259	25	9.7%
Apr-20	198	-	-	-	282	-84	-29.8%
May-20	164	-	-	-	332	-168	-50.6%
Jun-20	170	-	-	-	330	-160	-48.5%
Jul-20	201	-	-	-	375	-174	-46.4%
Aug-20	222	234	-12	-5.1%	394	-172	-43.7%
Sep-20	236	226	10	4.4%	354	-118	-33.3%
Oct-20	226	225	1	0.4%	379	-153	-40.4%
Nov-20	310	174	136	78.2%	350	-40	-11.4%
Dec-20	450	169	281	166.3%	316	134	42.4%
Jan-21	537	149	388	260.4%	335	202	60.3%
Feb-21	-	108	-	-	269	-	-
Mar-21	-	126	-	-	249	-	-

FEBRUARY 2021

Temporary Assistance for Domestic Violence Survivors-Without Payment

Temporary Assistance for Domestic Violence Survivors Without Payment represents individuals fleeing an abusive partner or family member who did not accept short-term financial assistance, but did receive other forms of aid including referrals to other services.



Month	Actual	Fall 2020 Forecast	Over/Under Forecast (Fall 2020)		Spring 2020 Forecast	Over/Under Forecast (Spring 2020)	
Mar-20	892	-	-	-	812	80	9.9%
Apr-20	758	-	-	-	818	-60	-7.3%
May-20	604	-	-	-	916	-312	-34.1%
Jun-20	558	-	-	-	945	-387	-41.0%
Jul-20	618	702	-84	-12.0%	1,000	-382	-38.2%
Aug-20	707	751	-44	-5.9%	1,061	-354	-33.4%
Sep-20	808	803	5	0.6%	1,038	-230	-22.2%
Oct-20	795	785	10	1.3%	1,002	-207	-20.7%
Nov-20	-	753	-	-	935	-	-
Dec-20	-	672	-	-	918	-	-
Jan-21	-	606	-	-	840	-	-
Feb-21	-	541	-	-	832	-	-
Mar-21	-	538	-	-	844	-	-