

JANUARY 2021

Note: The changes in public policy, behavior, and economics due to the COVID-19 crisis have created greater uncertainty than is usually experienced in a forecast cycle. Details concerning the assumptions underlying all forecasted caseload areas are contained in the Fall 2020 DHS-OHA Caseload Forecast report, which was released at the end of October.

Due to the rollout of the new Integrated Eligibility (I.E.) system, some programs of Self-Sufficiency data were not available for this monthly update. The data will be updated in subsequent variance reports, as we confirm accuracy with the new data source.

Total Temporary Assistance for Needy Families

| Month | Actual | Fall 2020 Forecast | Over/Under Forecast | % |
|--------|--------|--------------------|---------------------|--------|
| Jul-20 | 19,051 | - | - | - |
| Aug-20 | 18,603 | 19,887 | -1,284 | -6.5% |
| Sep-20 | 18,205 | 20,052 | -1,847 | -9.2% |
| Oct-20 | 17,811 | 20,436 | -2,625 | -12.8% |
| Nov-20 | 17,715 | 20,672 | -2,957 | -14.3% |
| Dec-20 | 17,492 | 20,975 | -3,483 | -16.6% |

TANF: One-Parent

| Month | Actual | Fall 2020 Forecast | Over/Under Forecast | % |
|--------|--------|--------------------|---------------------|--------|
| Jul-20 | 15,822 | - | - | - |
| Aug-20 | 15,529 | 16,414 | -885 | -5.4% |
| Sep-20 | 15,252 | 16,557 | -1,305 | -7.9% |
| Oct-20 | 14,991 | 16,875 | -1,884 | -11.2% |
| Nov-20 | 14,843 | 17,072 | -2,229 | -13.1% |
| Dec-20 | 14,558 | 17,311 | -2,753 | -15.9% |

TANF: Two-Parent

| Month | Actual | Fall 2020 Forecast | Over/Under Forecast | % |
|--------|--------|--------------------|---------------------|--------|
| Jul-20 | 3,229 | - | - | - |
| Aug-20 | 3,074 | 3,473 | -399 | -11.5% |
| Sep-20 | 2,953 | 3,495 | -542 | -15.5% |
| Oct-20 | 2,820 | 3,561 | -741 | -20.8% |
| Nov-20 | 2,872 | 3,600 | -728 | -20.2% |
| Dec-20 | 2,934 | 3,664 | -730 | -19.9% |

TANF Employment Payments

| Month | Actual | Fall 2020 Forecast | Over/Under Forecast | % |
|--------|--------|--------------------|---------------------|--------|
| Jul-20 | 1,139 | - | - | - |
| Aug-20 | 1,359 | 1,227 | 132 | 10.8% |
| Sep-20 | 1,425 | 1,230 | 195 | 15.9% |
| Oct-20 | 1,307 | 1,184 | 123 | 10.4% |
| Nov-20 | 1,198 | 1,222 | -24 | -2.0% |
| Dec-20 | 985 | 1,310 | -325 | -24.8% |

Temporary Assistance for Domestic Violence Survivors - with Payment (Families)

| Month | Actual | Fall 2020 Forecast | Over/Under Forecast | % |
|--------|--------|--------------------|---------------------|--------|
| Jul-20 | 201 | - | - | - |
| Aug-20 | 212 | 234 | -22 | -9.4% |
| Sep-20 | 219 | 226 | -7 | -3.1% |
| Oct-20 | 201 | 225 | -24 | -10.7% |
| Nov-20 | 168 | 174 | -6 | -3.4% |
| Dec-20 | 157 | 169 | -12 | -7.1% |

Temporary Assistance for Domestic Violence Survivors - without Payment (Families)

| Month | Actual | Fall 2020 Forecast | Over/Under Forecast | % |
|--------|--------|--------------------|---------------------|--------|
| Jun-20 | 558 | - | - | - |
| Jul-20 | 618 | 702 | -84 | -12.0% |
| Aug-20 | 707 | 751 | -44 | -5.9% |
| Sep-20 | 808 | 803 | 5 | 0.6% |
| Oct-20 | - | 785 | - | - |
| Nov-20 | - | 752 | - | - |

Pre-SSI

| Month | Actual | Fall 2020 Forecast | Over/Under Forecast | % |
|--------|--------|--------------------|---------------------|-------|
| Jul-20 | 189 | - | - | - |
| Aug-20 | 180 | 181 | -1 | -0.6% |
| Sep-20 | 179 | 181 | -2 | -1.1% |
| Oct-20 | 183 | 183 | 0 | 0.0% |
| Nov-20 | - | 185 | - | - |
| Dec-20 | - | 187 | - | - |

Total Supplemental Nutrition Assistance Programs

| Month | Actual | Fall 2020 Forecast | Over/Under Forecast | % |
|--------|---------|--------------------|---------------------|--------|
| Jul-20 | 423,702 | - | - | - |
| Aug-20 | 422,109 | 449,052 | -26,943 | -6.0% |
| Sep-20 | 426,431 | 450,032 | -23,601 | -5.2% |
| Oct-20 | 394,873 | 451,222 | -56,349 | -12.5% |
| Nov-20 | 411,411 | 451,317 | -39,906 | -8.8% |
| Dec-20 | 420,095 | 451,762 | -31,667 | -7.0% |

JANUARY 2021

SNAP: Aging and People with Disabilities

| Month | Actual | Fall 2020 Forecast | Over/Under Forecast | % |
|--------|---------|--------------------|---------------------|-------|
| Jul-20 | 136,923 | - | - | - |
| Aug-20 | 137,044 | 138,559 | -1,515 | -1.1% |
| Sep-20 | 136,791 | 138,639 | -1,848 | -1.3% |
| Oct-20 | 136,355 | 138,774 | -2,419 | -1.7% |
| Nov-20 | 142,824 | 138,947 | 3,877 | 2.8% |
| Dec-20 | 145,601 | 139,186 | 6,415 | 4.6% |

SNAP: Self Sufficiency

| Month | Actual | Fall 2020 Forecast | Over/Under Forecast | % |
|--------|---------|--------------------|---------------------|--------|
| Jul-20 | 286,779 | - | - | - |
| Aug-20 | 285,065 | 310,493 | -25,428 | -8.2% |
| Sep-20 | 289,640 | 311,393 | -21,753 | -7.0% |
| Oct-20 | 258,518 | 312,448 | -53,930 | -17.3% |
| Nov-20 | 268,587 | 312,370 | -43,783 | -14.0% |
| Dec-20 | 274,494 | 312,576 | -38,082 | -12.2% |

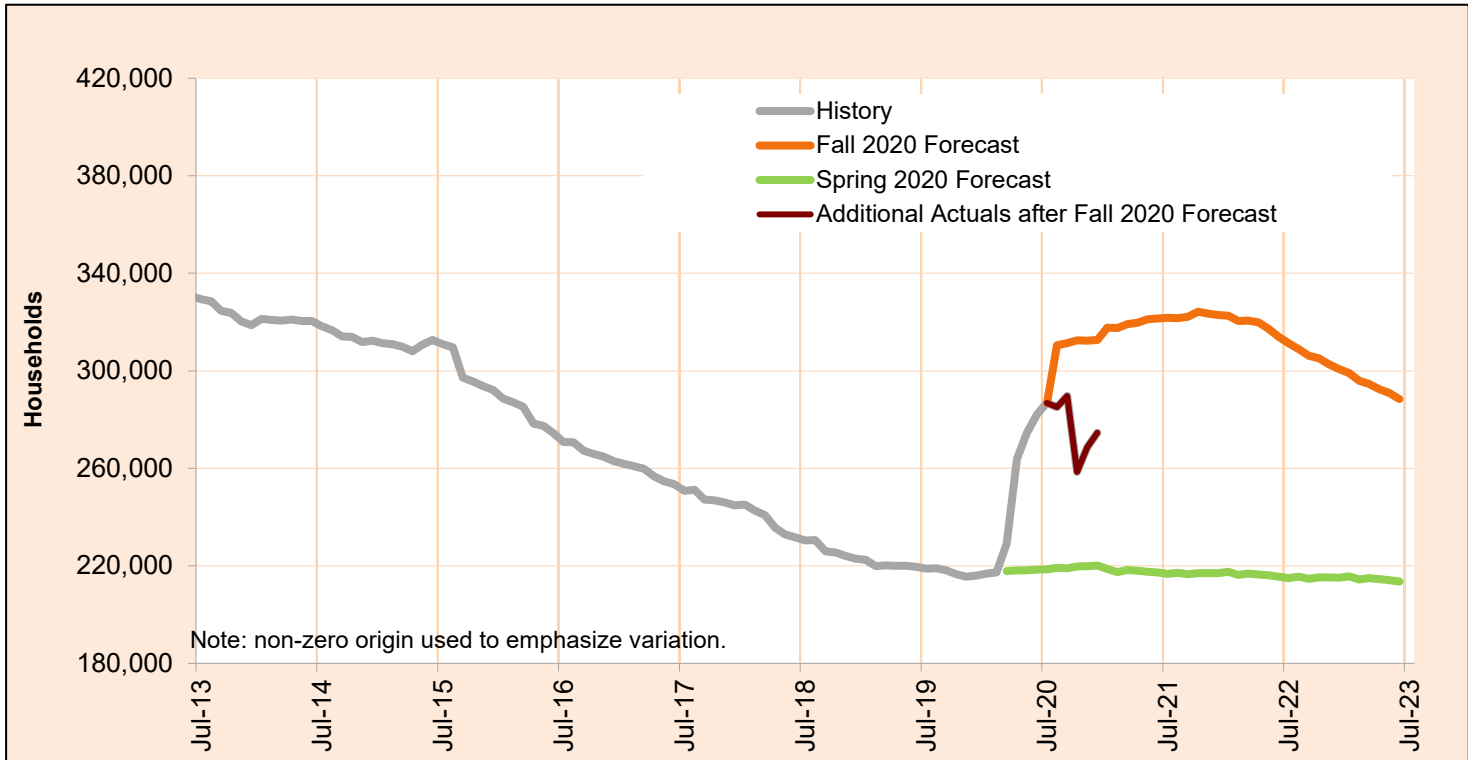
Employment Related Daycare (Families)

| Month | Actual | Forecast Discontinued |
|--------|--------|-----------------------|
| Jul-20 | 6,805 | |
| Aug-20 | 6,890 | |
| Sep-20 | 7,124 | |
| Oct-20 | 7,519 | |
| Nov-20 | 7,825 | |
| Dec-20 | 7,860 | |

JANUARY 2021

SNAP: Self Sufficiency

This program supplements food budgets for low-income families, individuals and seniors and people with disabilities.

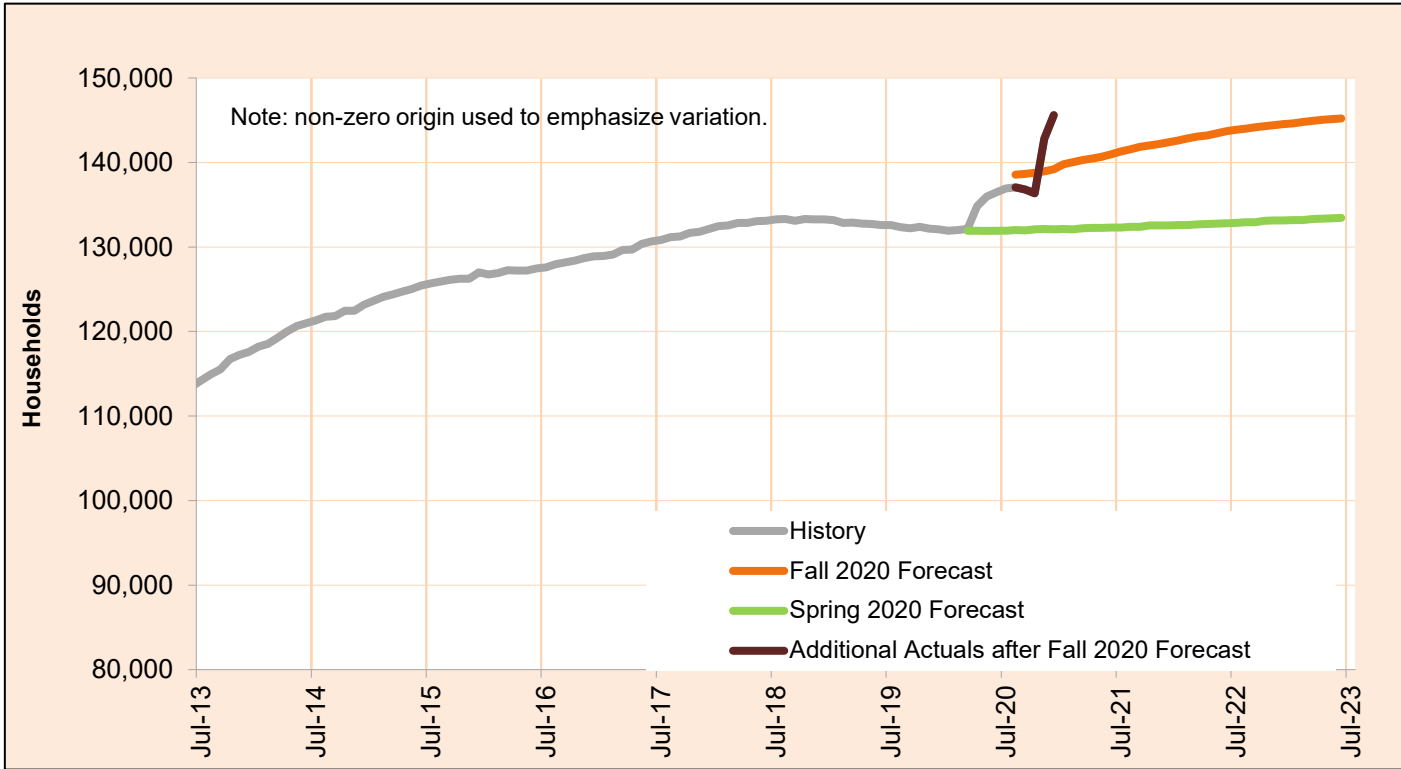


| Month | Actual | Fall 2020 Forecast | Over/Under Forecast (Fall 2020) | | Spring 2020 Forecast | Over/Under Forecast (Spring 2020) | |
|---------------|---------|--------------------|---------------------------------|--------|----------------------|-----------------------------------|-------|
| Feb-20 | 217,245 | - | - | - | - | - | - |
| Mar-20 | 229,088 | - | - | - | 217,840 | 11,248 | 5.2% |
| Apr-20 | 263,760 | - | - | - | 218,210 | 45,550 | 20.9% |
| May-20 | 274,472 | - | - | - | 218,138 | 56,334 | 25.8% |
| Jun-20 | 282,021 | - | - | - | 218,480 | 63,541 | 29.1% |
| Jul-20 | 286,779 | - | - | - | 218,601 | 68,178 | 31.2% |
| Aug-20 | 285,065 | 310,493 | -25,428 | -8.2% | 219,200 | 65,865 | 30.0% |
| Sep-20 | 289,640 | 311,393 | -21,753 | -7.0% | 219,067 | 70,573 | 32.2% |
| Oct-20 | 258,518 | 312,448 | -53,930 | -17.3% | 219,722 | 38,796 | 17.7% |
| Nov-20 | 268,587 | 312,370 | -43,783 | -14.0% | 219,816 | 48,771 | 22.2% |
| Dec-20 | 274,494 | 312,576 | -38,082 | -12.2% | 220,109 | 54,385 | 24.7% |
| Jan-21 | - | 317,744 | - | - | 218,718 | - | - |
| Feb-21 | - | 317,534 | - | - | 217,385 | - | - |

JANUARY 2021

SNAP: Aging and People with Disabilities

This program supplements food budgets for low-income families, individuals and seniors and people with disabilities.

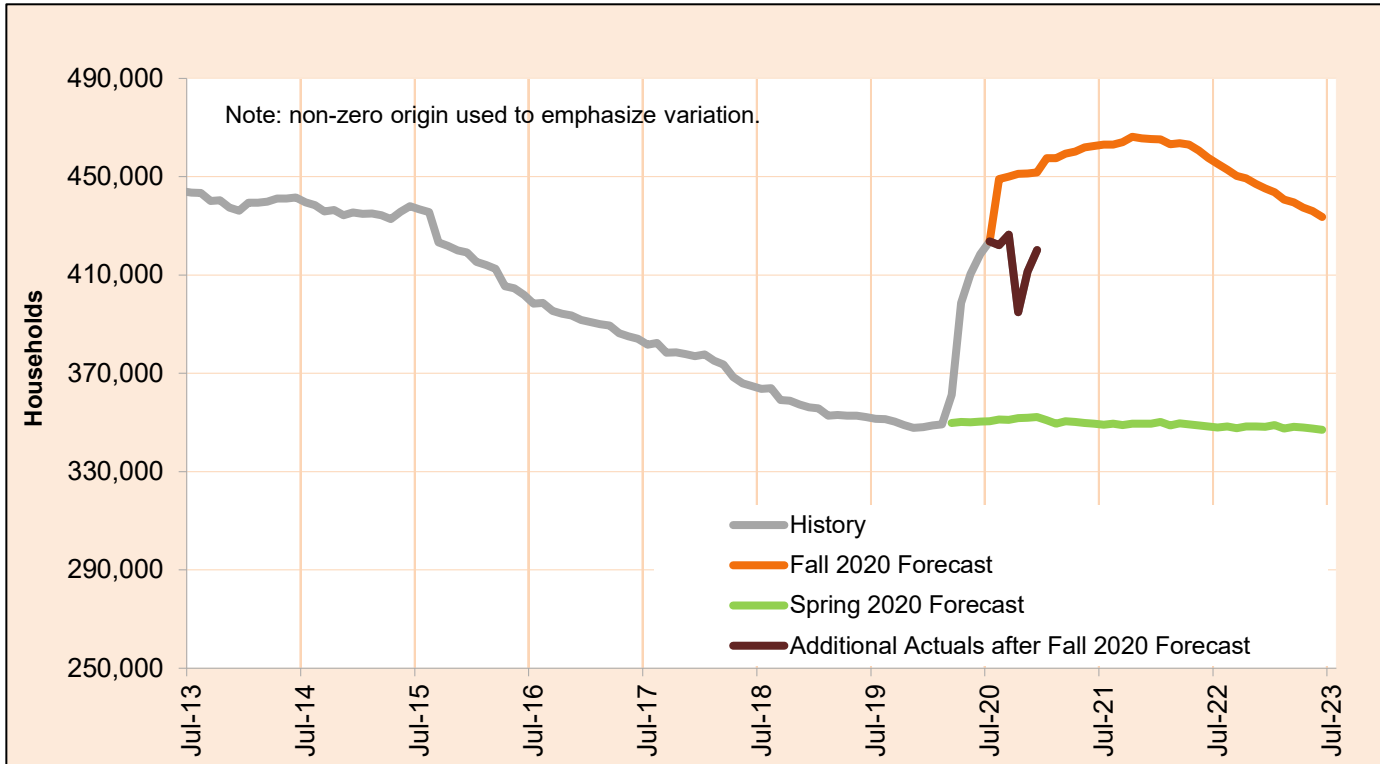


| Month | Actual | Fall 2020 Forecast | Over/Under Forecast (Fall 2020) | | Spring 2020 Forecast | Over/Under Forecast (Spring 2020) | |
|--------|---------|--------------------|---------------------------------|-------|----------------------|-----------------------------------|-------|
| Feb-20 | 131,999 | - | - | - | - | - | - |
| Mar-20 | 132,133 | - | - | - | 131,937 | 196 | 0.1% |
| Apr-20 | 134,833 | - | - | - | 131,934 | 2,899 | 2.2% |
| May-20 | 135,944 | - | - | - | 131,904 | 4,040 | 3.1% |
| Jun-20 | 136,473 | - | - | - | 131,915 | 4,558 | 3.5% |
| Jul-20 | 136,923 | - | - | - | 131,927 | 4,996 | 3.8% |
| Aug-20 | 137,044 | 138,559 | -1,515 | -1.1% | 131,986 | 5,058 | 3.8% |
| Sep-20 | 136,791 | 138,639 | -1,848 | -1.3% | 131,967 | 4,824 | 3.7% |
| Oct-20 | 136,355 | 138,774 | -2,419 | -1.7% | 132,096 | 4,259 | 3.2% |
| Nov-20 | 142,824 | 138,947 | 3,877 | 2.8% | 132,124 | 10,700 | 8.1% |
| Dec-20 | 145,601 | 139,186 | 6,415 | 4.6% | 132,102 | 13,499 | 10.2% |
| Jan-21 | - | 139,779 | - | - | 132,135 | - | - |
| Feb-21 | - | 140,056 | - | - | 132,105 | - | - |

JANUARY 2021

Total Supplemental Nutrition Assistance Programs

This program supplements food budgets for low-income families, individuals and seniors and people with disabilities.

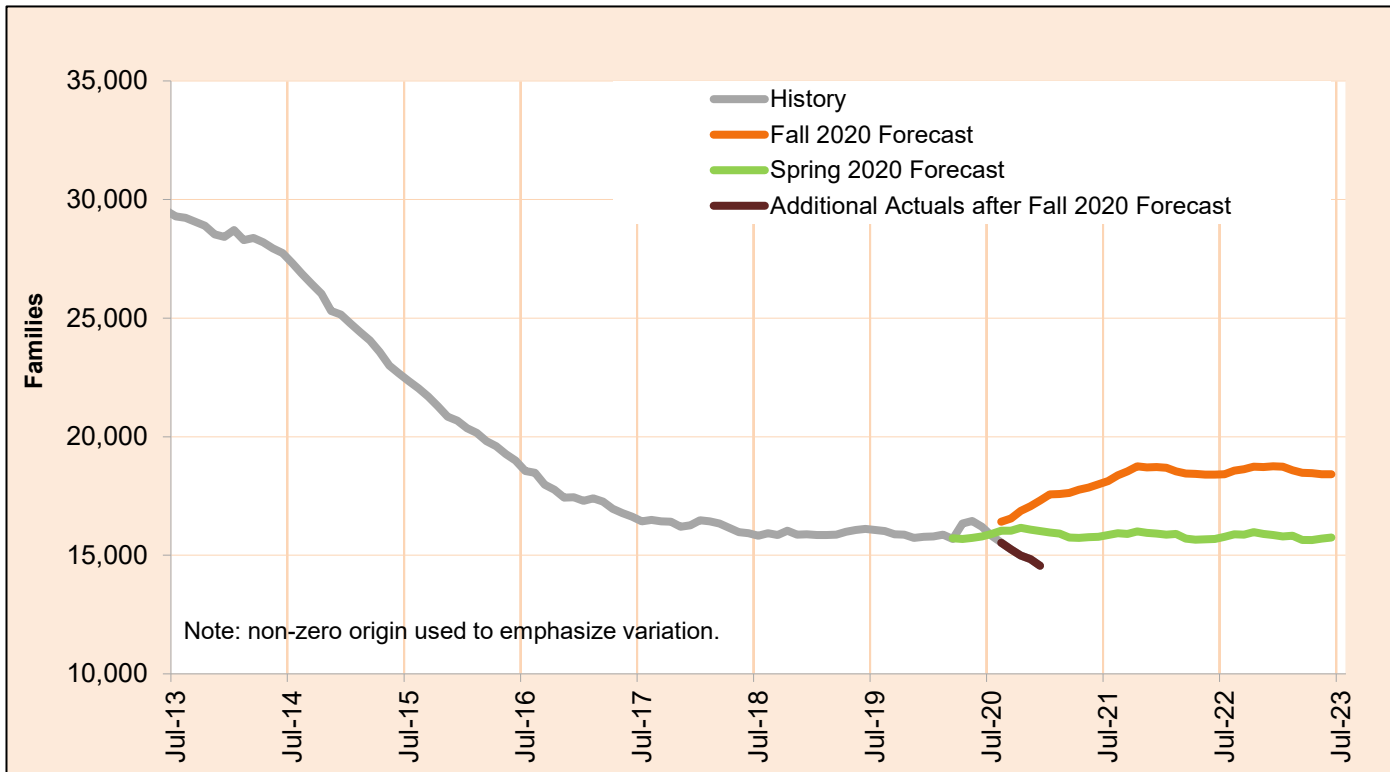


| Month | Actual | Fall 2020 Forecast | Over/Under Forecast (Fall 2020) | Spring 2020 Forecast | Over/Under Forecast (Spring 2020) |
|---------------|---------|--------------------|---------------------------------|----------------------|-----------------------------------|
| Feb-20 | 349,244 | - | - | - | - |
| Mar-20 | 361,221 | - | - | 349,777 | 11,444 3.3% |
| Apr-20 | 398,593 | - | - | 350,144 | 48,449 13.8% |
| May-20 | 410,416 | - | - | 350,042 | 60,374 17.2% |
| Jun-20 | 418,494 | - | - | 350,395 | 68,099 19.4% |
| Jul-20 | 423,702 | - | - | 350,528 | 73,174 20.9% |
| Aug-20 | 422,109 | 449,052 | -26,943 -6.0% | 351,186 | 70,923 20.2% |
| Sep-20 | 426,431 | 450,032 | -23,601 -5.2% | 351,034 | 75,397 21.5% |
| Oct-20 | 394,873 | 451,222 | -56,349 -12.5% | 351,818 | 43,055 12.2% |
| Nov-20 | 411,411 | 451,317 | -39,906 -8.8% | 351,940 | 59,471 16.9% |
| Dec-20 | 420,095 | 451,762 | -31,667 -7.0% | 352,211 | 67,884 19.3% |
| Jan-21 | - | 457,523 | - | 350,853 | - |
| Feb-21 | - | 457,590 | - | 349,490 | - |

JANUARY 2021

Temporary Assistance for Needy Families - One Parent

The Temporary Assistance for Needy Families (TANF) One Parent program provides services and cash grants to low-income families with one parent living in the home to help them become self-sufficient.



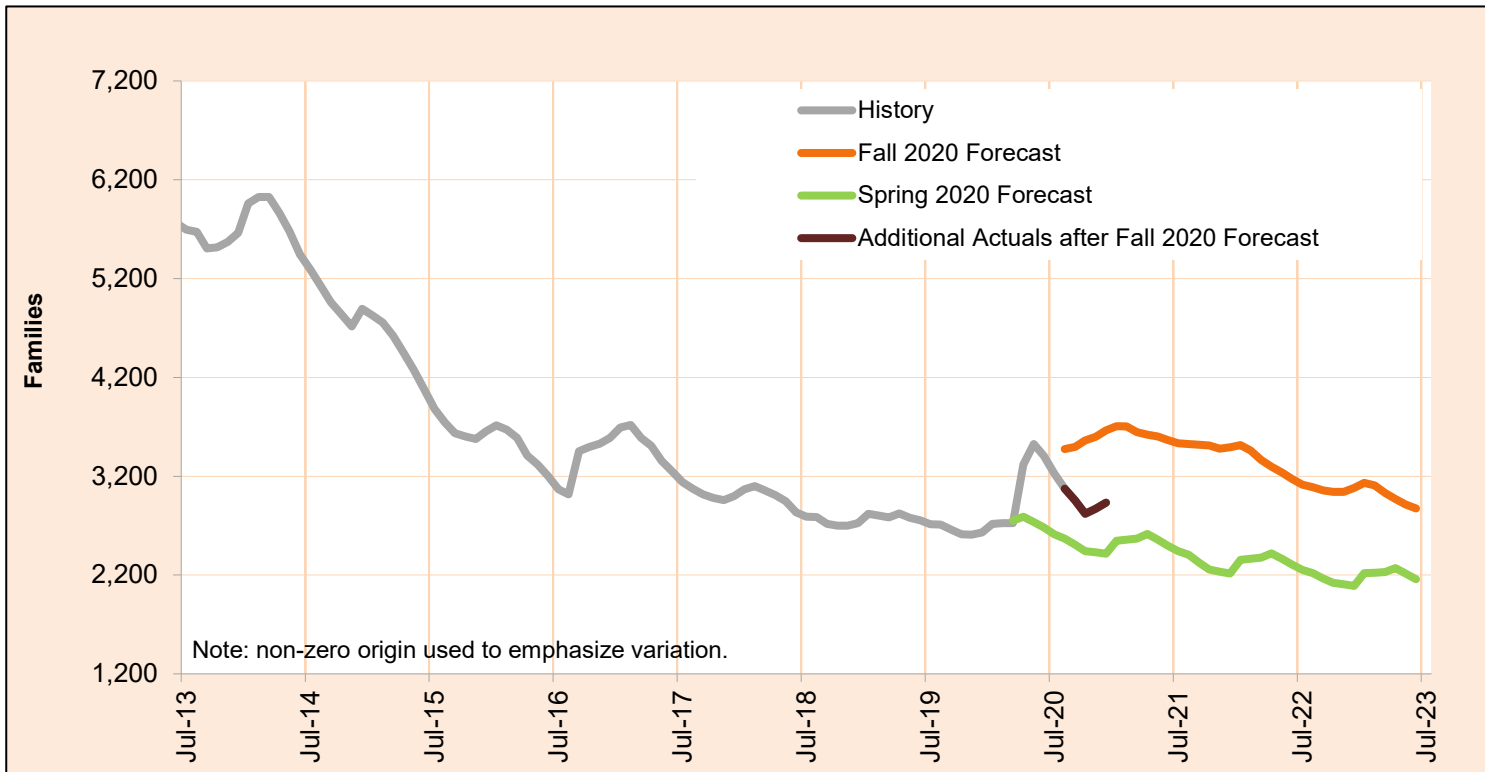
| Month | Actual | Fall 2020 Forecast | Over/Under Forecast (Fall 2020) | Spring 2020 Forecast | Over/Under Forecast (Spring 2020) |
|--------|--------|--------------------|---------------------------------|----------------------|-----------------------------------|
| Feb-20 | 15,866 | - | - | - | - |
| Mar-20 | 15,692 | - | - | 15,723 | -31 -0.2% |
| Apr-20 | 16,342 | - | - | 15,691 | 651 4.1% |
| May-20 | 16,450 | - | - | 15,735 | 715 4.5% |
| Jun-20 | 16,198 | - | - | 15,791 | 407 2.6% |
| Jul-20 | 15,822 | - | - | 15,905 | -83 -0.5% |
| Aug-20 | 15,529 | 16,414 | -885 -5.4% | 16,042 | -513 -3.2% |
| Sep-20 | 15,252 | 16,557 | -1,305 -7.9% | 16,038 | -786 -4.9% |
| Oct-20 | 14,991 | 16,875 | -1,884 -11.2% | 16,158 | -1,167 -7.2% |
| Nov-20 | 14,843 | 17,072 | -2,229 -13.1% | 16,088 | -1,245 -7.7% |
| Dec-20 | 14,558 | 17,311 | -2,753 -15.9% | 16,028 | -1,470 -9.2% |
| Jan-21 | - | 17,569 | - | 15,954 | - |
| Feb-21 | - | 17,581 | - | 15,921 | - |

NOTE: In order to deal with an overlap in monthly data reporting between TANF and the after-TANF benefit known as Employment Payments, TANF caseload counts have been revised, starting in May 2016. In any month where an Employment Payment has been authorized, the TANF case has been removed from the caseload count. This eliminates the possibility of duplicate counts.

JANUARY 2021

Temporary Assistance for Needy Families - Two Parent

The Temporary Assistance for Needy Families (TANF) Two Parent program provides services and cash grants to low-income families with two parents in the home to help them become self-sufficient.



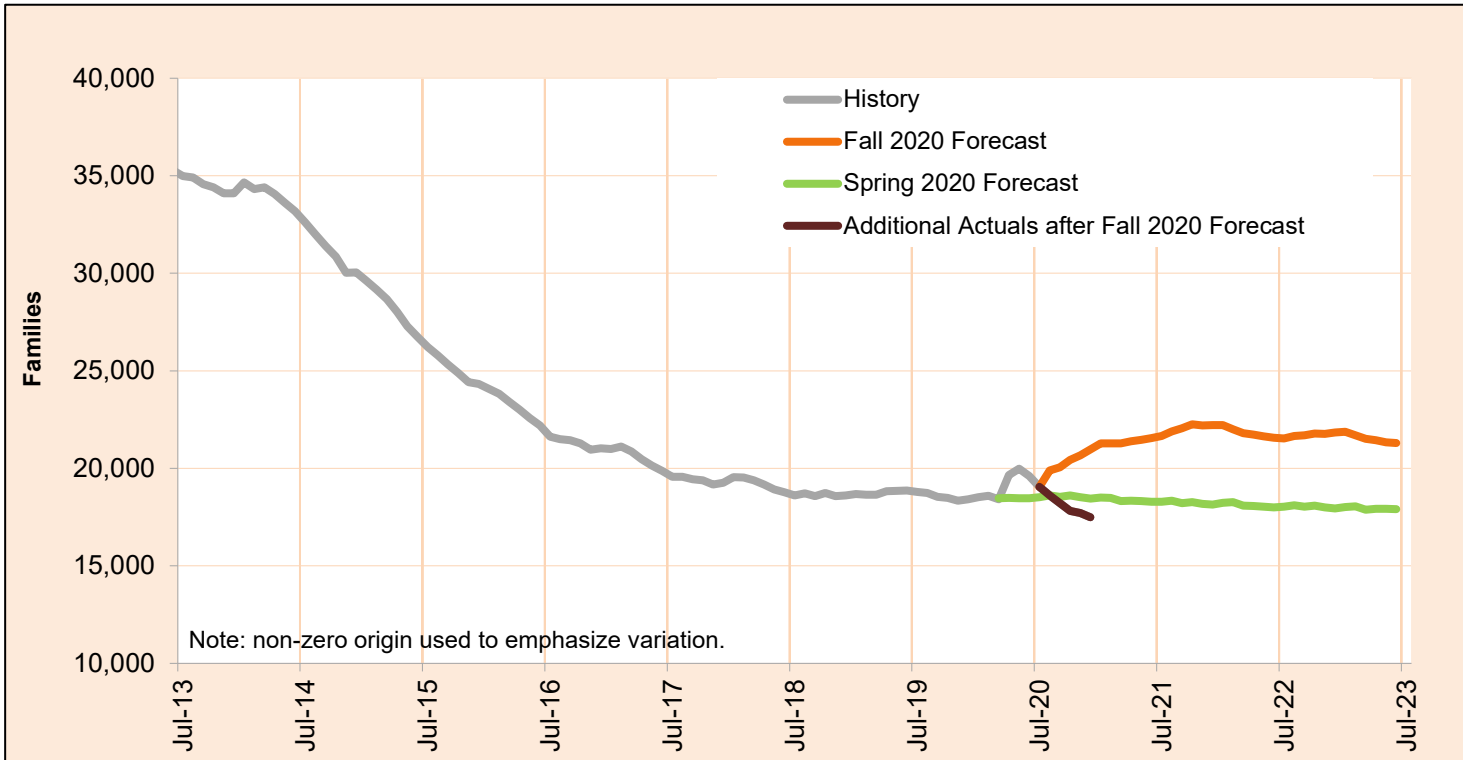
| Month | Actual | Fall 2020 Forecast | Over/Under Forecast (Fall 2020) | | Spring 2020 Forecast | Over/Under Forecast (Spring 2020) | |
|--------|--------|--------------------|---------------------------------|--------|----------------------|-----------------------------------|-------|
| Feb-20 | 2,725 | - | - | - | - | - | - |
| Mar-20 | 2,724 | - | - | - | 2,749 | -25 | -0.9% |
| Apr-20 | 3,320 | - | - | - | 2,790 | 530 | 19.0% |
| May-20 | 3,525 | - | - | - | 2,736 | 789 | 28.8% |
| Jun-20 | 3,405 | - | - | - | 2,680 | 725 | 27.1% |
| Jul-20 | 3,229 | - | - | - | 2,611 | 618 | 23.7% |
| Aug-20 | 3,074 | 3,473 | -399 | -11.5% | 2,569 | 505 | 19.7% |
| Sep-20 | 2,953 | 3,495 | -542 | -15.5% | 2,506 | 447 | 17.8% |
| Oct-20 | 2,820 | 3,561 | -741 | -20.8% | 2,443 | 377 | 15.4% |
| Nov-20 | 2,872 | 3,600 | -728 | -20.2% | 2,430 | 442 | 18.2% |
| Dec-20 | 2,934 | 3,664 | -730 | -19.9% | 2,414 | 520 | 21.5% |
| Jan-21 | - | 3,706 | - | - | 2,546 | - | - |
| Feb-21 | - | 3,703 | - | - | 2,558 | - | - |

NOTE: In order to deal with an overlap in monthly data reporting between TANF and the after-TANF benefit known as Employment Payments, TANF caseload counts have been revised, starting in May 2016. In any month where an Employment Payment has been authorized, the TANF case has been removed from the caseload count. This eliminates the possibility of duplicate counts.

JANUARY 2021

Total Temporary Assistance for Needy Families

The Temporary Assistance for Needy Families (TANF) program provides services and cash grants to low-income families with children to help them become self-sufficient.



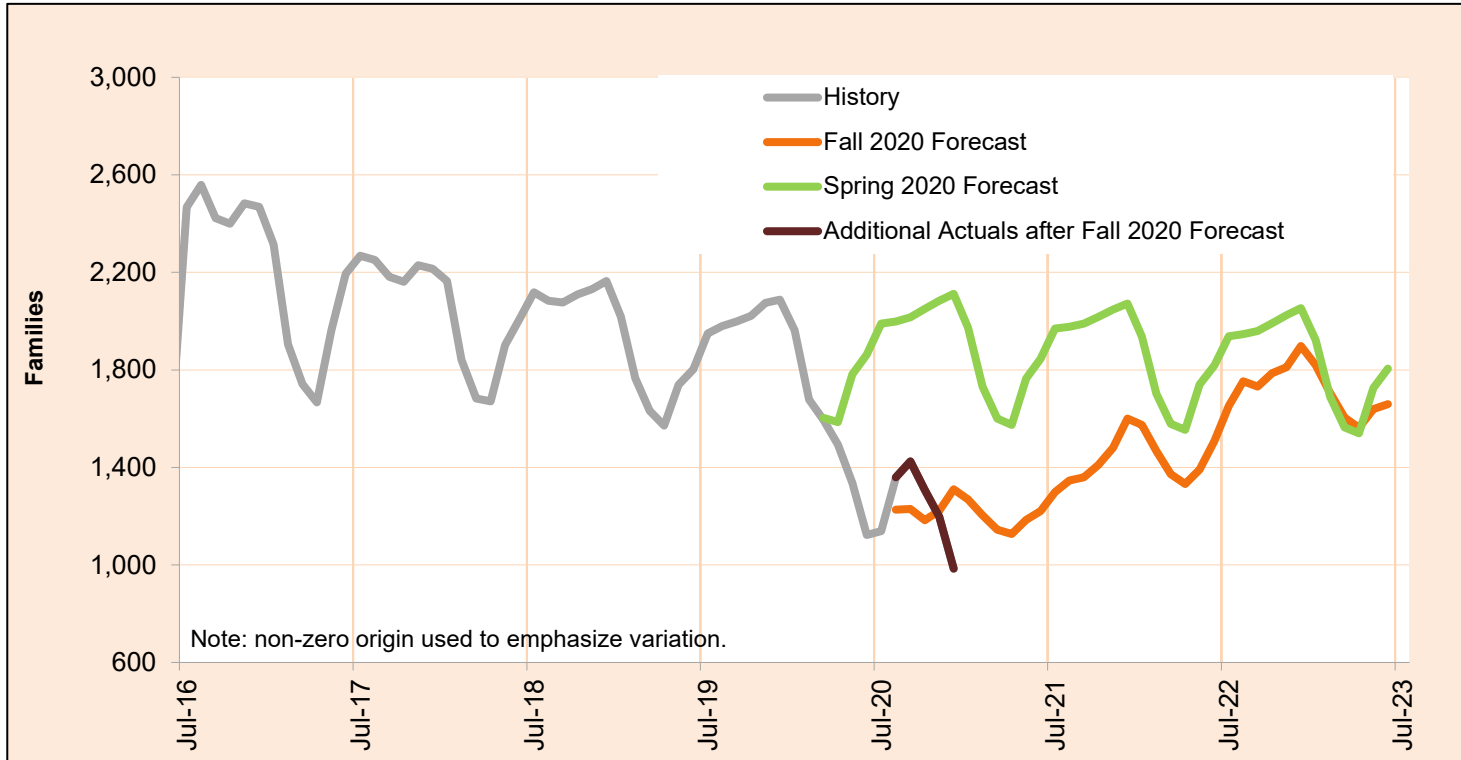
| Month | Actual | Fall 2020 Forecast | Over/Under Forecast (Fall 2020) | Spring 2020 Forecast | Over/Under Forecast (Spring 2020) |
|--------|--------|--------------------|---------------------------------|----------------------|-----------------------------------|
| Feb-20 | 18,591 | - | - | - | - |
| Mar-20 | 18,416 | - | - | 18,472 | -56 -0.3% |
| Apr-20 | 19,662 | - | - | 18,481 | 1,181 6.4% |
| May-20 | 19,975 | - | - | 18,471 | 1,504 8.1% |
| Jun-20 | 19,603 | - | - | 18,471 | 1,132 6.1% |
| Jul-20 | 19,051 | - | - | 18,516 | 535 2.9% |
| Aug-20 | 18,603 | 19,887 | -1,284 -6.5% | 18,611 | -8 0.0% |
| Sep-20 | 18,205 | 20,052 | -1,847 -9.2% | 18,544 | -339 -1.8% |
| Oct-20 | 17,811 | 20,436 | -2,625 -12.8% | 18,601 | -790 -4.2% |
| Nov-20 | 17,715 | 20,672 | -2,957 -14.3% | 18,518 | -803 -4.3% |
| Dec-20 | 17,492 | 20,975 | -3,483 -16.6% | 18,442 | -950 -5.2% |
| Jan-21 | - | 21,275 | - | 18,500 | - |
| Feb-21 | - | 21,284 | - | 18,479 | - |

NOTE: In order to deal with an overlap in monthly data reporting between TANF and the after-TANF benefit known as Employment Payments, TANF caseload counts have been revised, starting in May 2016. In any month where an Employment Payment has been authorized, the TANF case has been removed from the caseload count. This eliminates the possibility of duplicate counts.

JANUARY 2021

TANF Employment Payments

TANF Employment Payments (TANF-EP) provides short-term financial assistance (3 months) for families after exiting TANF. Cases began transitioning to TANF-EP in May, 2016.

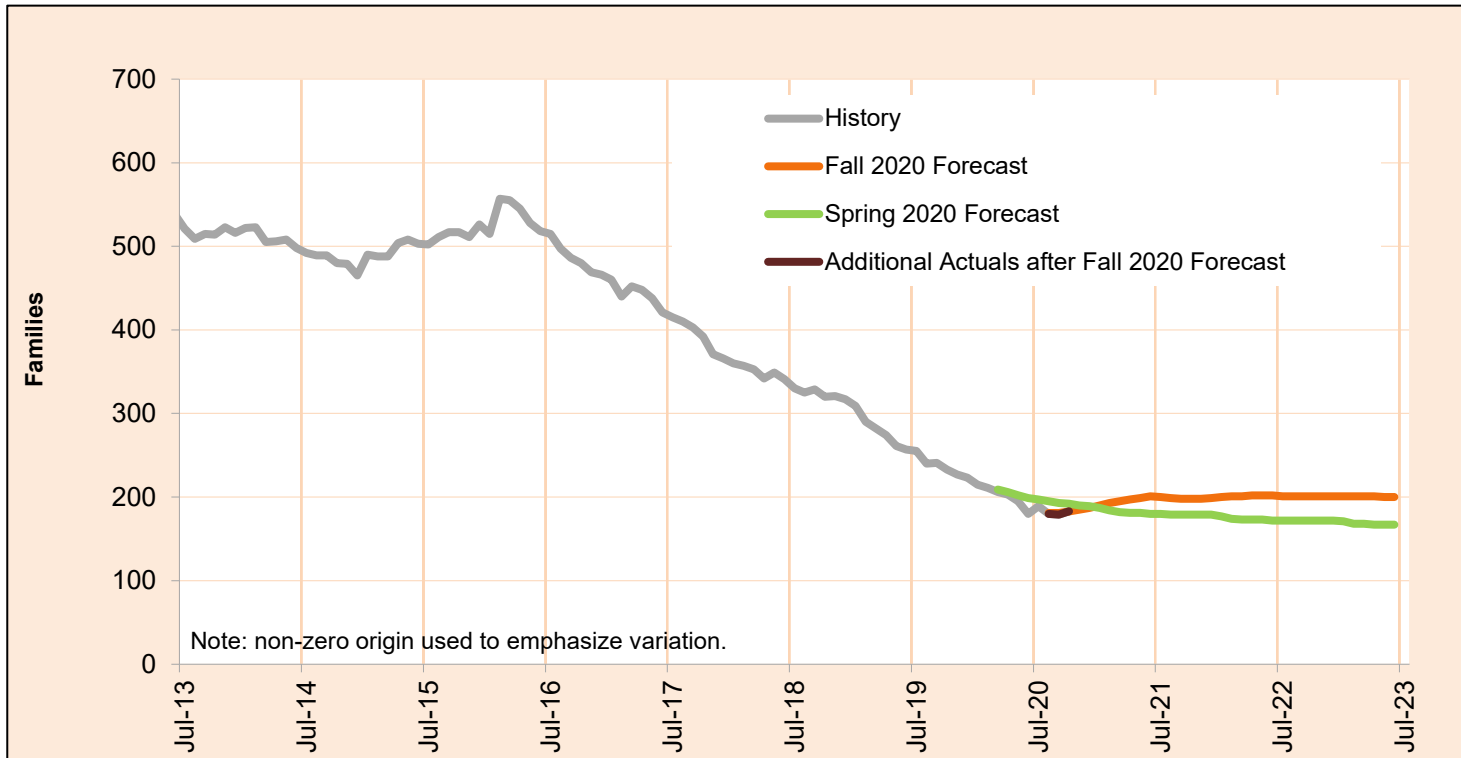


| Month | Actual | Fall 2020 Forecast | Over/Under Forecast (Fall 2020) | | Spring 2020 Forecast | Over/Under Forecast (Spring 2020) | |
|---------------|--------|--------------------|---------------------------------|--------|----------------------|-----------------------------------|--------|
| Feb-20 | 1,679 | - | - | - | - | - | - |
| Mar-20 | 1,595 | - | - | - | 1,603 | -8 | -0.5% |
| Apr-20 | 1,493 | - | - | - | 1,586 | -93 | -5.9% |
| May-20 | 1,337 | - | - | - | 1,782 | -445 | -25.0% |
| Jun-20 | 1,123 | - | - | - | 1,863 | -740 | -39.7% |
| Jul-20 | 1,139 | - | - | - | 1,990 | -851 | -42.8% |
| Aug-20 | 1,359 | 1,227 | 132 | 10.8% | 1,999 | -640 | -32.0% |
| Sep-20 | 1,425 | 1,230 | 195 | 15.9% | 2,016 | -591 | -29.3% |
| Oct-20 | 1,307 | 1,184 | 123 | 10.4% | 2,051 | -744 | -36.3% |
| Nov-20 | 1,198 | 1,222 | -24 | -2.0% | 2,084 | -886 | -42.5% |
| Dec-20 | 985 | 1,310 | -325 | -24.8% | 2,112 | -1,127 | -53.4% |
| Jan-21 | - | 1,267 | - | - | 1,972 | - | - |
| Feb-21 | - | 1,202 | - | - | 1,731 | - | - |

JANUARY 2021

Pre-SSI

Pre-SSI provides temporary benefits for families while they apply for SSI.

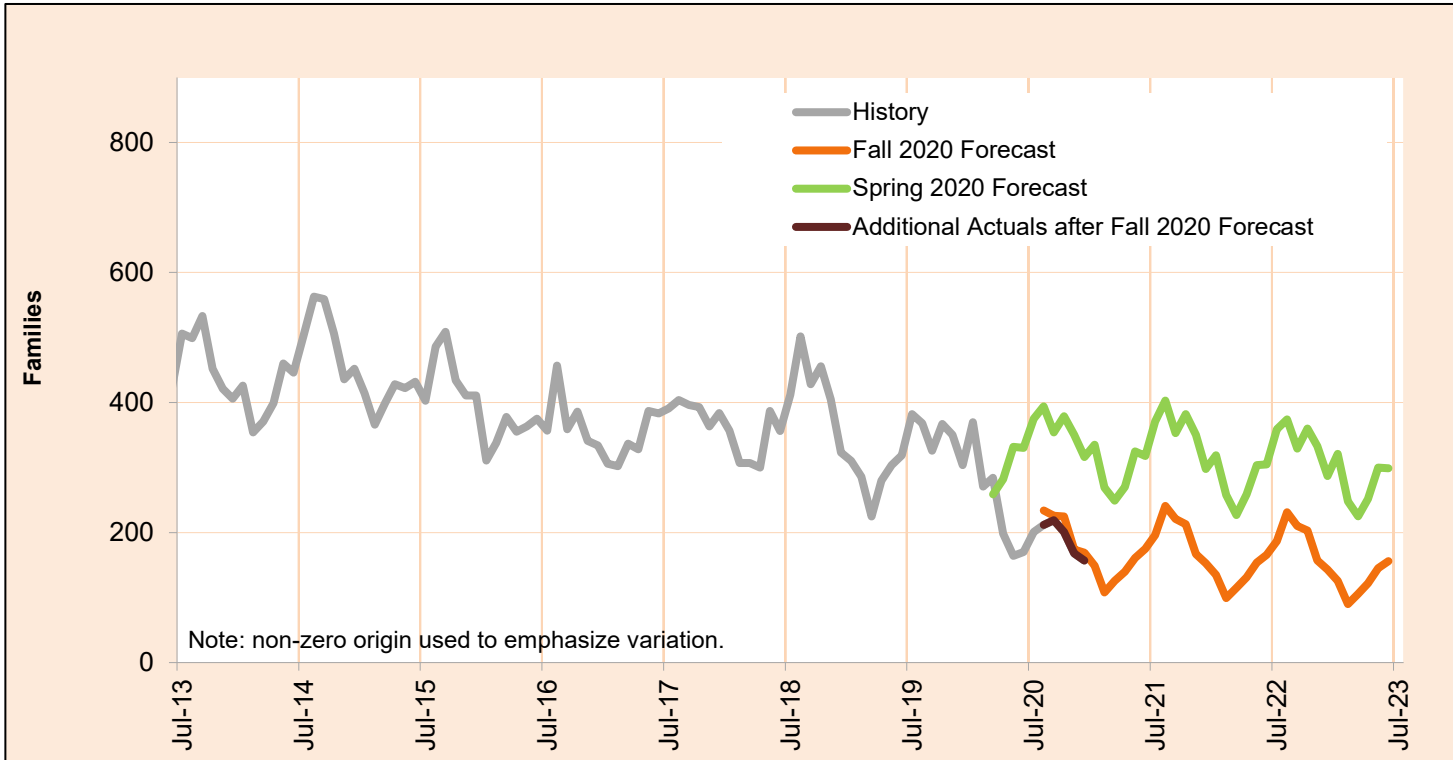


| Month | Actual | Fall 2020 Forecast | Over/Under Forecast (Fall 2020) | | Spring 2020 Forecast | Over/Under Forecast (Spring 2020) | |
|--------|--------|--------------------|---------------------------------|-------|----------------------|-----------------------------------|-------|
| Feb-20 | 211 | - | - | - | - | - | - |
| Mar-20 | 206 | - | - | - | 209 | -3 | -1.4% |
| Apr-20 | 203 | - | - | - | 206 | -3 | -1.5% |
| May-20 | 195 | - | - | - | 202 | -7 | -3.5% |
| Jun-20 | 180 | - | - | - | 199 | -19 | -9.5% |
| Jul-20 | 189 | - | - | - | 197 | -8 | -4.1% |
| Aug-20 | 180 | 181 | -1 | -0.6% | 195 | -15 | -7.7% |
| Sep-20 | 179 | 181 | -2 | -1.1% | 193 | -14 | -7.3% |
| Oct-20 | 183 | 183 | 0 | 0.0% | 192 | -9 | -4.7% |
| Nov-20 | - | 185 | - | - | 190 | - | - |
| Dec-20 | - | 187 | - | - | 189 | - | - |
| Jan-21 | - | 190 | - | - | 187 | - | - |
| Feb-21 | - | 193 | - | - | 184 | - | - |

JANUARY 2021

Temporary Assistance for Domestic Violence Survivors-With Payment

Temporary Assistance for Domestic Violence Survivors (TA-DVS) provides short-term financial assistance (up to 90 days) for individuals fleeing an abusive partner or family member.

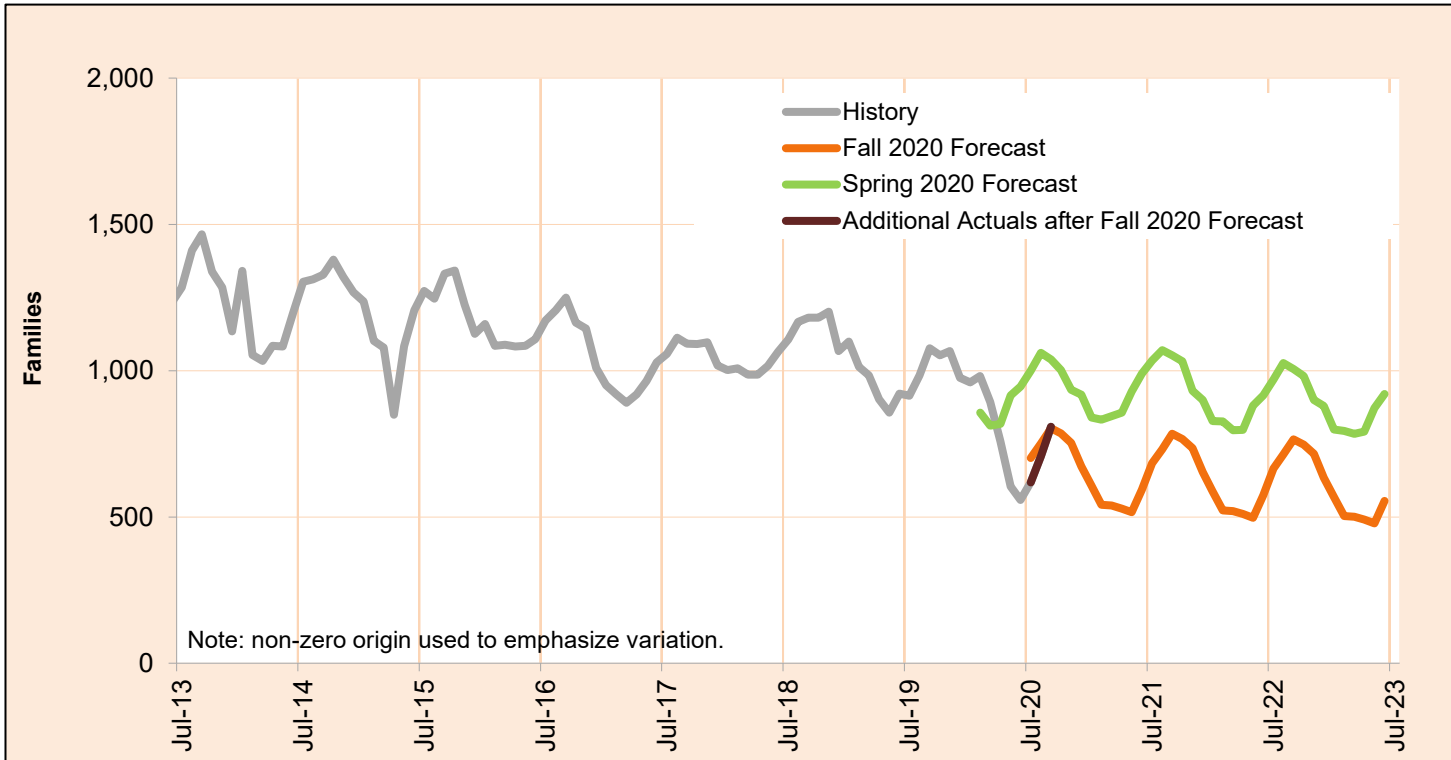


| Month | Actual | Fall 2020 Forecast | Over/Under Forecast (Fall 2020) | | Spring 2020 Forecast | Over/Under Forecast (Spring 2020) | |
|--------|--------|--------------------|---------------------------------|--------|----------------------|-----------------------------------|--------|
| Feb-20 | 271 | - | - | - | - | - | - |
| Mar-20 | 284 | - | - | - | 259 | 25 | 9.7% |
| Apr-20 | 198 | - | - | - | 282 | -84 | -29.8% |
| May-20 | 164 | - | - | - | 332 | -168 | -50.6% |
| Jun-20 | 170 | - | - | - | 330 | -160 | -48.5% |
| Jul-20 | 201 | - | - | - | 375 | -174 | -46.4% |
| Aug-20 | 212 | 234 | -22 | -9.4% | 394 | -182 | -46.2% |
| Sep-20 | 219 | 226 | -7 | -3.1% | 354 | -135 | -38.1% |
| Oct-20 | 201 | 225 | -24 | -10.7% | 379 | -178 | -47.0% |
| Nov-20 | 168 | 174 | -6 | -3.4% | 350 | -182 | -52.0% |
| Dec-20 | 157 | 169 | -12 | -7.1% | 316 | -159 | -50.3% |
| Jan-21 | - | 149 | - | - | 335 | - | - |
| Feb-21 | - | 108 | - | - | 269 | - | - |

JANUARY 2021

Temporary Assistance for Domestic Violence Survivors-Without Payment

Temporary Assistance for Domestic Violence Survivors Without Payment represents individuals fleeing an abusive partner or family member who did not accept short-term financial assistance, but did receive other forms of aid including referrals to other services.



| Month | Actual | Fall 2020 Forecast | Over/Under Forecast (Fall 2020) | | Spring 2020 Forecast | Over/Under Forecast (Spring 2020) | |
|--------|--------|--------------------|---------------------------------|--------|----------------------|-----------------------------------|--------|
| Feb-20 | 981 | - | - | - | 857 | 124 | 14.5% |
| Mar-20 | 892 | - | - | - | 812 | 80 | 9.9% |
| Apr-20 | 758 | - | - | - | 818 | -60 | -7.3% |
| May-20 | 604 | - | - | - | 916 | -312 | -34.1% |
| Jun-20 | 558 | - | - | - | 945 | -387 | -41.0% |
| Jul-20 | 618 | 702 | -84 | -12.0% | 1,000 | -382 | -38.2% |
| Aug-20 | 707 | 751 | -44 | -5.9% | 1,061 | -354 | -33.4% |
| Sep-20 | 808 | 803 | 5 | 0.6% | 1,038 | -230 | -22.2% |
| Oct-20 | - | 785 | - | - | 1,002 | - | - |
| Nov-20 | - | 753 | - | - | 935 | - | - |
| Dec-20 | - | 672 | - | - | 918 | - | - |
| Jan-21 | - | 606 | - | - | 840 | - | - |
| Feb-21 | - | 540 | - | - | 832 | - | - |