

MARCH 2021

Note: The changes in public policy, behavior, and economics due to the COVID-19 crisis continue to create greater uncertainty than is usually experienced in a forecast cycle. As with the Fall 2020 forecast, the current forecast for Spring 2021 contains assumptions about operations and recovery patterns from COVID, some of which have changed from the prior forecast. Details concerning these assumptions will be contained in the Spring 2021 ODHS-OHA Caseload Forecast report, which will be released in early May.

The rollout of the new Integrated Eligibility (I.E.) system has led to instability in counts of some programs in Self-Sufficiency. In other cases, data were not available for this monthly update. As a result, data may be updated or revised in subsequent variance reports, as known database issues are addressed.

Total Temporary Assistance for Needy Families

| Month | Actual | Spring 2021 Forecast | Over/Under Forecast | % |
|--------|--------|----------------------|---------------------|------|
| Sep-20 | 18,193 | - | - | - |
| Oct-20 | 17,799 | - | - | - |
| Nov-20 | 17,596 | - | - | - |
| Dec-20 | 17,482 | - | - | - |
| Jan-21 | 17,148 | - | - | - |
| Feb-21 | 17,031 | 16,954 | 77 | 0.5% |

TANF: One-Parent

| Month | Actual | Spring 2021 Forecast | Over/Under Forecast | % |
|--------|--------|----------------------|---------------------|------|
| Sep-20 | 15,242 | - | - | - |
| Oct-20 | 14,980 | - | - | - |
| Nov-20 | 14,747 | - | - | - |
| Dec-20 | 14,555 | - | - | - |
| Jan-21 | 14,250 | - | - | - |
| Feb-21 | 14,143 | 14,140 | 3 | 0.0% |

TANF: Two-Parent

| Month | Actual | Spring 2021 Forecast | Over/Under Forecast | % |
|--------|--------|----------------------|---------------------|------|
| Sep-20 | 2,951 | - | - | - |
| Oct-20 | 2,819 | - | - | - |
| Nov-20 | 2,849 | - | - | - |
| Dec-20 | 2,927 | - | - | - |
| Jan-21 | 2,898 | - | - | - |
| Feb-21 | 2,888 | 2,814 | 74 | 2.6% |

TANF Employment Payments

| Month | Actual | Spring 2021 Forecast | Over/Under Forecast | % |
|--------|--------|----------------------|---------------------|--------|
| Sep-20 | 1,425 | - | - | - |
| Oct-20 | 1,307 | - | - | - |
| Nov-20 | 1,206 | - | - | - |
| Dec-20 | 990 | - | - | - |
| Jan-21 | 914 | - | - | - |
| Feb-21 | 745 | 848 | -103 | -12.1% |

Temporary Assistance for Domestic Violence Survivors - with Payment (Families)¹

| Month | Actual | Spring 2021 Forecast | Over/Under Forecast | % |
|--------|--------|----------------------|---------------------|--------|
| Sep-20 | 236 | - | - | - |
| Oct-20 | 226 | - | - | - |
| Nov-20 | 310 | - | - | - |
| Dec-20 | 454 | - | - | - |
| Jan-21 | 542 | - | - | - |
| Feb-21 | 750 | 106 | 644 | 607.5% |

Temporary Assistance for Domestic Violence Survivors - without Payment (Families)²

| Month | Actual | Spring 2021 Forecast | Over/Under Forecast | % |
|--------|--------|----------------------|---------------------|---|
| Aug-20 | 707 | - | - | - |
| Sep-20 | 808 | - | - | - |
| Oct-20 | 795 | - | - | - |
| Nov-20 | - | 771 | - | - |
| Dec-20 | - | 690 | - | - |
| Jan-21 | - | 620 | - | - |

Pre-SSI

| Month | Actual | Spring 2021 Forecast | Over/Under Forecast | % |
|--------|--------|----------------------|---------------------|------|
| Sep-20 | 179 | - | - | - |
| Oct-20 | 183 | - | - | - |
| Nov-20 | 184 | - | - | - |
| Dec-20 | 175 | - | - | - |
| Jan-21 | 165 | - | - | - |
| Feb-21 | 169 | 165 | 4 | 2.4% |

Total Supplemental Nutrition Assistance Programs

| Month | Actual | Spring 2021 Forecast | Over/Under Forecast | % |
|--------|---------|----------------------|---------------------|-------|
| Sep-20 | 426,431 | - | - | - |
| Oct-20 | 394,583 | - | - | - |
| Nov-20 | 411,404 | - | - | - |
| Dec-20 | 422,427 | - | - | - |
| Jan-21 | 430,507 | - | - | - |
| Feb-21 | 428,106 | 429,270 | -1,164 | -0.3% |

MARCH 2021

SNAP: Aging and People with Disabilities

| Month | Actual | Spring 2021 Forecast | Over/Under Forecast | % |
|--------|---------|----------------------|---------------------|------|
| Sep-20 | 136,791 | - | - | - |
| Oct-20 | 136,217 | - | - | - |
| Nov-20 | 142,722 | - | - | - |
| Dec-20 | 146,087 | - | - | - |
| Jan-21 | 147,791 | - | - | - |
| Feb-21 | 150,616 | 147,319 | 3,297 | 2.2% |

SNAP: Self Sufficiency

| Month | Actual | Spring 2021 Forecast | Over/Under Forecast | % |
|--------|---------|----------------------|---------------------|-------|
| Sep-20 | 289,640 | - | - | - |
| Oct-20 | 258,366 | - | - | - |
| Nov-20 | 268,682 | - | - | - |
| Dec-20 | 276,340 | - | - | - |
| Jan-21 | 282,716 | - | - | - |
| Feb-21 | 277,490 | 281,951 | -4,461 | -1.6% |

Employment Related Daycare (Families)

| Month | Actual | Forecast Discontinued |
|--------|--------|-----------------------|
| Sep-20 | 7,124 | |
| Oct-20 | 7,524 | |
| Nov-20 | 7,860 | |
| Dec-20 | 8,003 | |
| Jan-21 | 8,158 | |
| Feb-21 | 8,155 | |

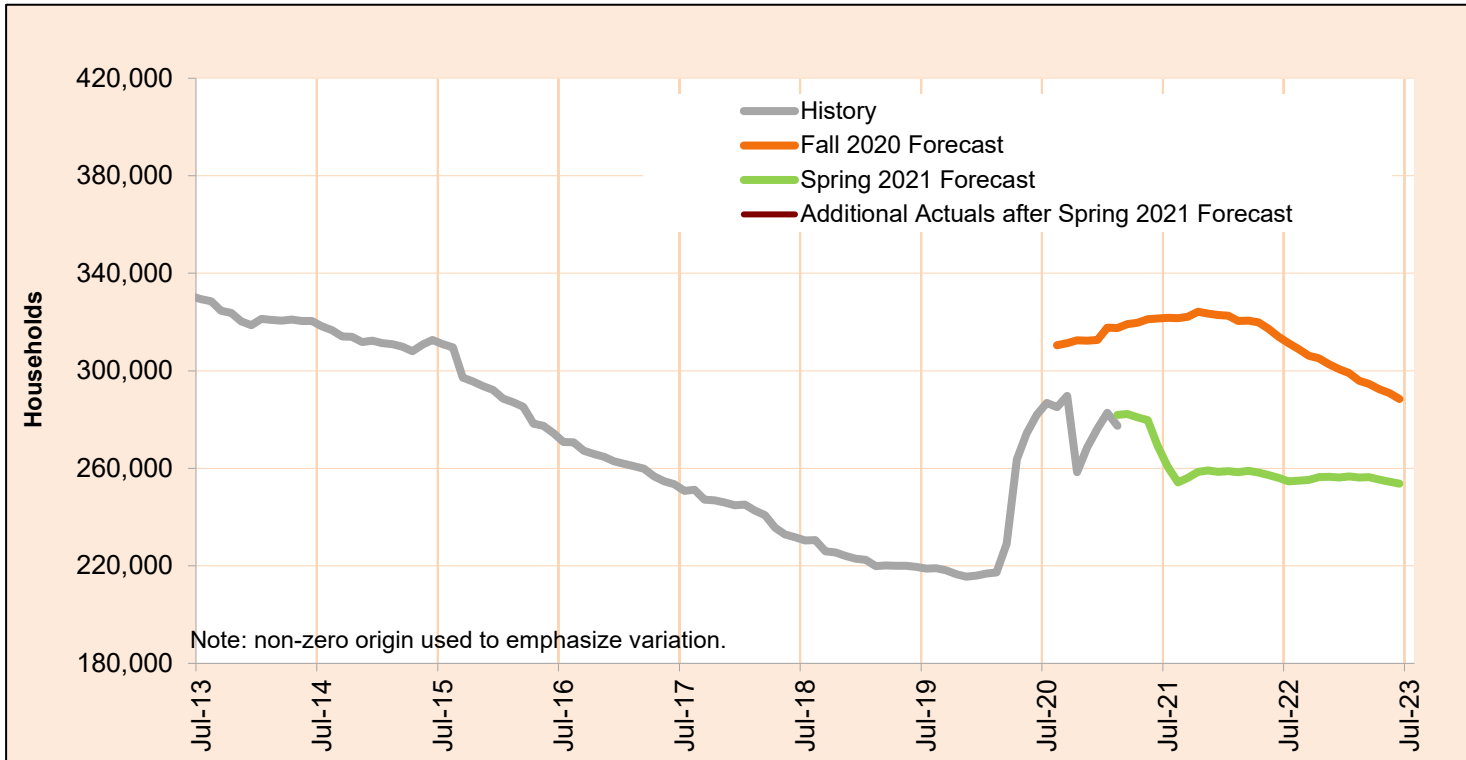
¹The likelihood that this data is inaccurate due to the rollout of the integrated eligibility system is high. Revisions are likely as the system becomes more stable.

²Data for this caseload is unavailable due to the rollout of the Integrated Eligibility system. Revisions will be published as soon as this data becomes available.

MARCH 2021

SNAP: Self Sufficiency

This program supplements food budgets for low-income families, individuals and seniors and people with disabilities.

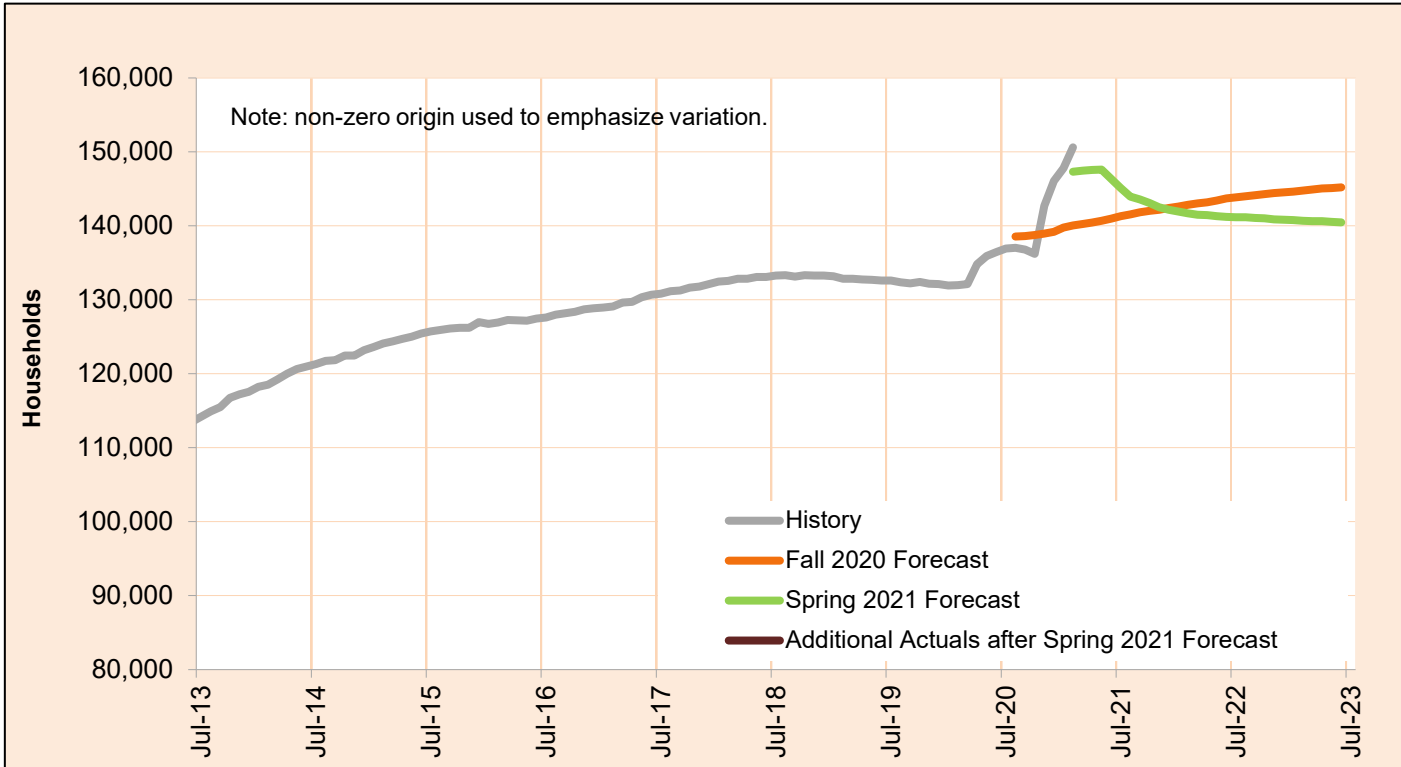


| Month | Actual | Spring 2021 Forecast | Over/Under Forecast (Spring 2021) | | Fall 2020 Forecast | Over/Under Forecast (Fall 2020) | |
|--------|---------|----------------------|-----------------------------------|-------|--------------------|---------------------------------|--------|
| Apr-20 | 263,760 | - | - | - | - | - | - |
| May-20 | 274,472 | - | - | - | - | - | - |
| Jun-20 | 282,021 | - | - | - | - | - | - |
| Jul-20 | 286,779 | - | - | - | - | - | - |
| Aug-20 | 285,065 | - | - | - | 310,493 | -25,428 | -8.2% |
| Sep-20 | 289,640 | - | - | - | 311,393 | -21,753 | -7.0% |
| Oct-20 | 258,366 | - | - | - | 312,448 | -54,082 | -17.3% |
| Nov-20 | 268,682 | - | - | - | 312,370 | -43,688 | -14.0% |
| Dec-20 | 276,340 | - | - | - | 312,576 | -36,236 | -11.6% |
| Jan-21 | 282,716 | - | - | - | 317,744 | -35,028 | -11.0% |
| Feb-21 | 277,490 | 281,951 | -4,461 | -1.6% | 317,534 | -40,044 | -12.6% |
| Mar-21 | - | 282,290 | - | - | 319,091 | - | - |
| Apr-21 | - | 280,966 | - | - | 319,729 | - | - |

MARCH 2021

SNAP: Aging and People with Disabilities

This program supplements food budgets for low-income families, individuals and seniors and people with disabilities.

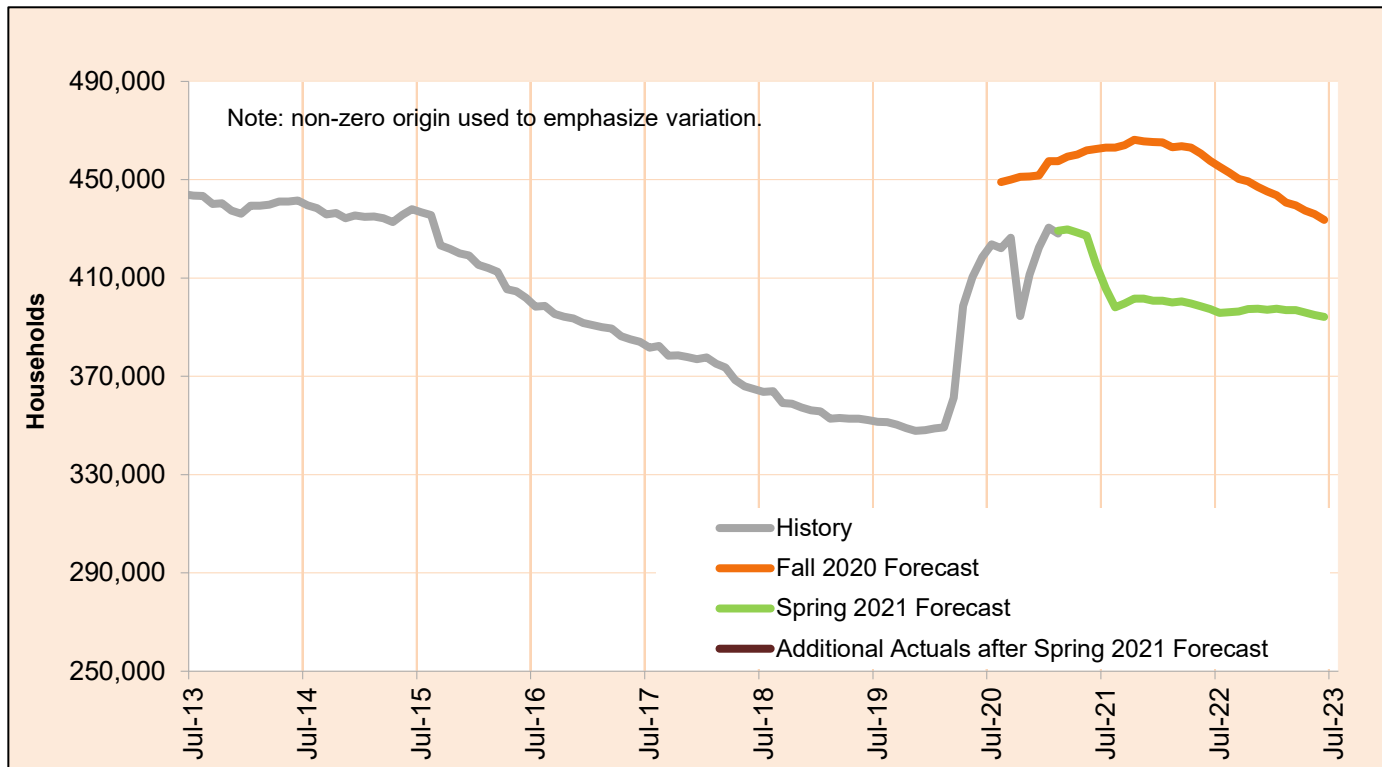


| Month | Actual | Spring 2021 Forecast | Over/Under Forecast (Spring 2021) | Fall 2020 Forecast | Over/Under Forecast (Fall 2020) |
|--------|---------|----------------------|-----------------------------------|--------------------|---------------------------------|
| Apr-20 | 134,833 | - | - | - | - |
| May-20 | 135,944 | - | - | - | - |
| Jun-20 | 136,473 | - | - | - | - |
| Jul-20 | 136,923 | - | - | - | - |
| Aug-20 | 137,044 | - | - | 138,559 | -1,515 -1.1% |
| Sep-20 | 136,791 | - | - | 138,639 | -1,848 -1.3% |
| Oct-20 | 136,217 | - | - | 138,774 | -2,557 -1.8% |
| Nov-20 | 142,722 | - | - | 138,947 | 3,775 2.7% |
| Dec-20 | 146,087 | - | - | 139,186 | 6,901 5.0% |
| Jan-21 | 147,791 | - | - | 139,779 | 8,012 5.7% |
| Feb-21 | 150,616 | 147,319 | 3,297 2.2% | 140,056 | 10,560 7.5% |
| Mar-21 | - | 147,477 | - | 140,274 | - |
| Apr-21 | - | 147,572 | - | 140,453 | - |

MARCH 2021

Total Supplemental Nutrition Assistance Programs

This program supplements food budgets for low-income families, individuals and seniors and people with disabilities.

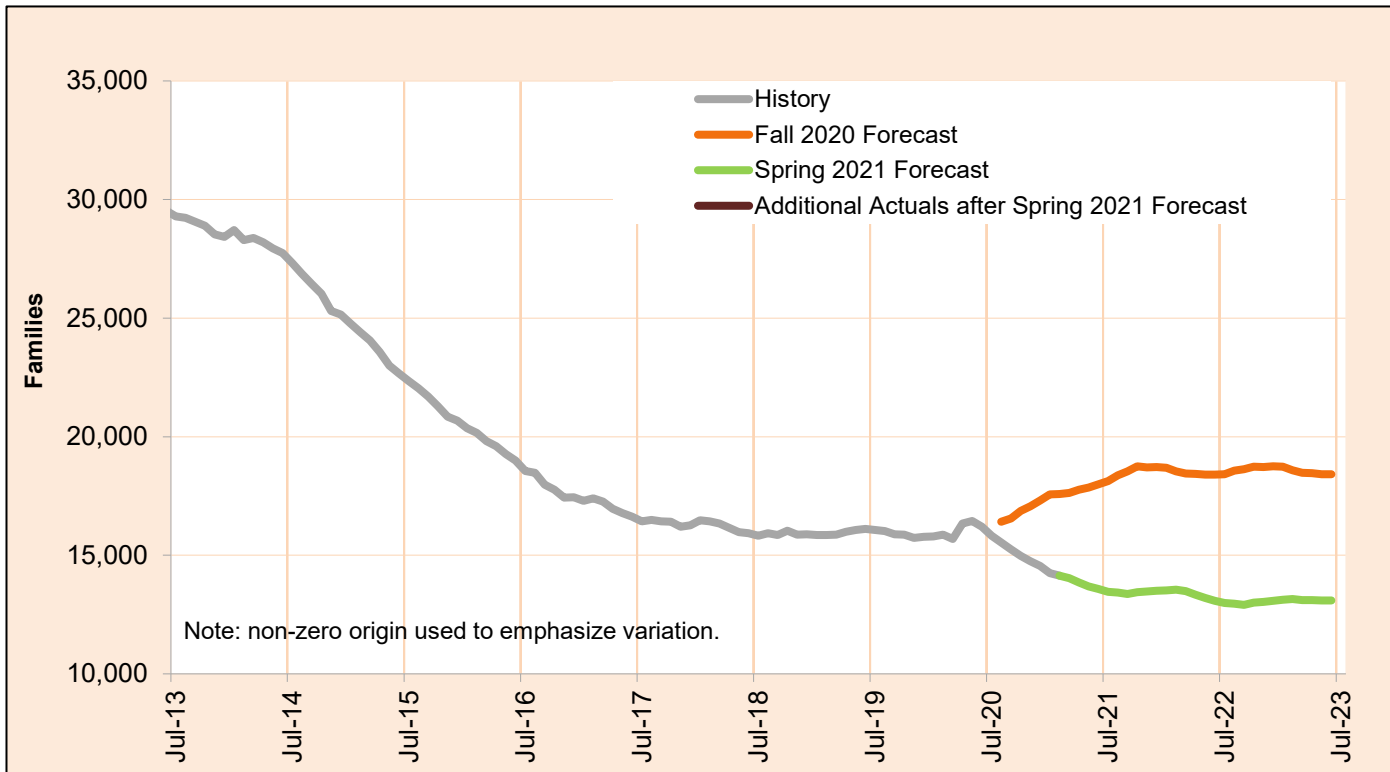


| Month | Actual | Spring 2021 Forecast | Over/Under Forecast (Spring 2021) | Fall 2020 Forecast | Over/Under Forecast (Fall 2020) |
|--------|---------|----------------------|-----------------------------------|--------------------|---------------------------------|
| Apr-20 | 398,593 | - | - | - | - |
| May-20 | 410,416 | - | - | - | - |
| Jun-20 | 418,494 | - | - | - | - |
| Jul-20 | 423,702 | - | - | - | - |
| Aug-20 | 422,109 | - | - | 449,052 | -26,943 -6.0% |
| Sep-20 | 426,431 | - | - | 450,032 | -23,601 -5.2% |
| Oct-20 | 394,583 | - | - | 451,222 | -56,639 -12.6% |
| Nov-20 | 411,404 | - | - | 451,317 | -39,913 -8.8% |
| Dec-20 | 422,427 | - | - | 451,762 | -29,335 -6.5% |
| Jan-21 | 430,507 | - | - | 457,523 | -27,016 -5.9% |
| Feb-21 | 428,106 | 429,270 | -1,164 -0.3% | 457,590 | -29,484 -6.4% |
| Mar-21 | - | 429,767 | - | 459,365 | - |
| Apr-21 | - | 428,538 | - | 460,182 | - |

MARCH 2021

Temporary Assistance for Needy Families - One Parent

The Temporary Assistance for Needy Families (TANF) One Parent program provides services and cash grants to low-income families with one parent living in the home to help them become self-sufficient.



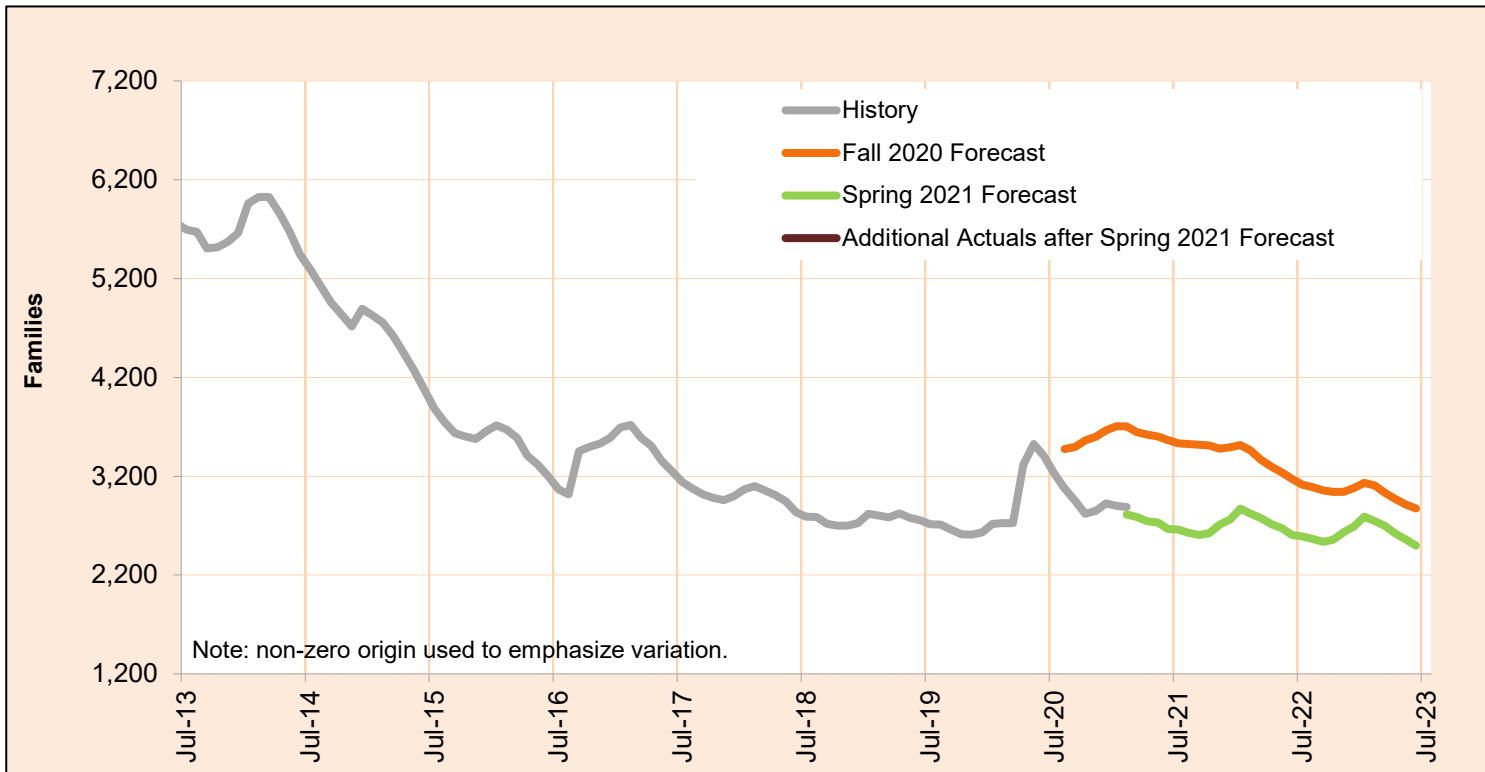
| Month | Actual | Spring 2021 Forecast | Over/Under Forecast (Spring 2021) | Fall 2020 Forecast | Over/Under Forecast (Fall 2020) |
|--------|--------|----------------------|-----------------------------------|--------------------|---------------------------------|
| Apr-20 | 16,342 | - | - | - | - |
| May-20 | 16,450 | - | - | - | - |
| Jun-20 | 16,198 | - | - | - | - |
| Jul-20 | 15,822 | - | - | - | - |
| Aug-20 | 15,529 | - | - | 16,414 | -885 -5.4% |
| Sep-20 | 15,242 | - | - | 16,557 | -1,315 -7.9% |
| Oct-20 | 14,980 | - | - | 16,875 | -1,895 -11.2% |
| Nov-20 | 14,747 | - | - | 17,072 | -2,325 -13.6% |
| Dec-20 | 14,555 | - | - | 17,311 | -2,756 -15.9% |
| Jan-21 | 14,250 | - | - | 17,569 | -3,319 -18.9% |
| Feb-21 | 14,143 | 14,140 | 3 0.0% | 17,581 | -3,438 -19.6% |
| Mar-21 | - | 14,031 | - | 17,633 | - |
| Apr-21 | - | 13,850 | - | 17,764 | - |

NOTE: In order to deal with an overlap in monthly data reporting between TANF and the after-TANF benefit known as Employment Payments, TANF caseload counts have been revised, starting in May 2016. In any month where an Employment Payment has been authorized, the TANF case has been removed from the caseload count. This eliminates the possibility of duplicate counts.

MARCH 2021

Temporary Assistance for Needy Families - Two Parent

The Temporary Assistance for Needy Families (TANF) Two Parent program provides services and cash grants to low-income families with two parents in the home to help them become self-sufficient.



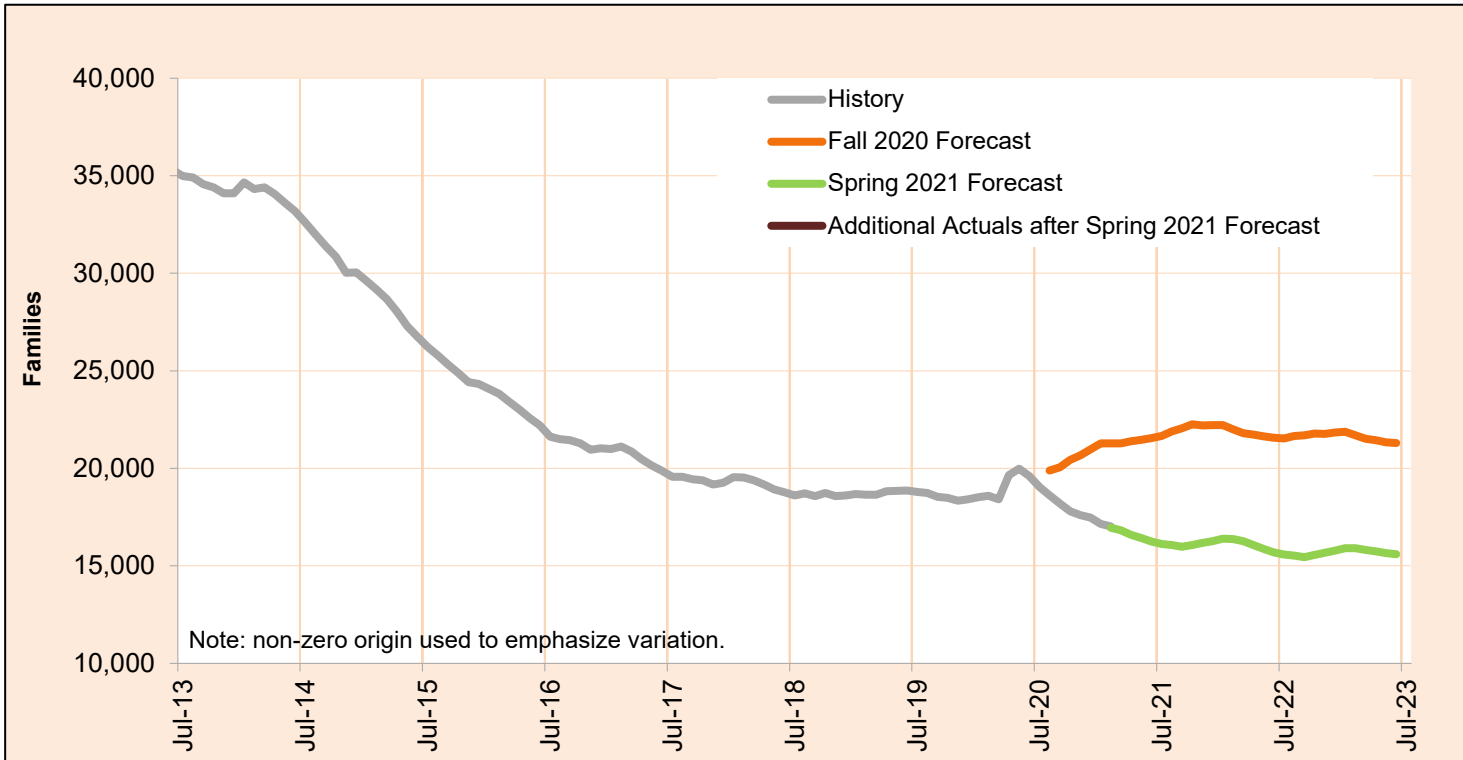
| Month | Actual | Spring 2021 Forecast | Over/Under Forecast (Spring 2021) | | Fall 2020 Forecast | Over/Under Forecast (Fall 2020) | |
|--------|--------|----------------------|-----------------------------------|------|--------------------|---------------------------------|--------|
| Apr-20 | 3,320 | - | - | - | - | - | - |
| May-20 | 3,525 | - | - | - | - | - | - |
| Jun-20 | 3,405 | - | - | - | - | - | - |
| Jul-20 | 3,229 | - | - | - | - | - | - |
| Aug-20 | 3,074 | - | - | - | 3,473 | -399 | -11.5% |
| Sep-20 | 2,951 | - | - | - | 3,495 | -544 | -15.6% |
| Oct-20 | 2,819 | - | - | - | 3,561 | -742 | -20.8% |
| Nov-20 | 2,849 | - | - | - | 3,600 | -751 | -20.9% |
| Dec-20 | 2,927 | - | - | - | 3,664 | -737 | -20.1% |
| Jan-21 | 2,898 | - | - | - | 3,706 | -808 | -21.8% |
| Feb-21 | 2,888 | 2,814 | 74 | 2.6% | 3,703 | -815 | -22.0% |
| Mar-21 | - | 2,788 | - | - | 3,646 | - | - |
| Apr-21 | - | 2,742 | - | - | 3,619 | - | - |

NOTE: In order to deal with an overlap in monthly data reporting between TANF and the after-TANF benefit known as Employment Payments, TANF caseload counts have been revised, starting in May 2016. In any month where an Employment Payment has been authorized, the TANF case has been removed from the caseload count. This eliminates the possibility of duplicate counts.

MARCH 2021

Total Temporary Assistance for Needy Families

The Temporary Assistance for Needy Families (TANF) program provides services and cash grants to low-income families with children to help them become self-sufficient.



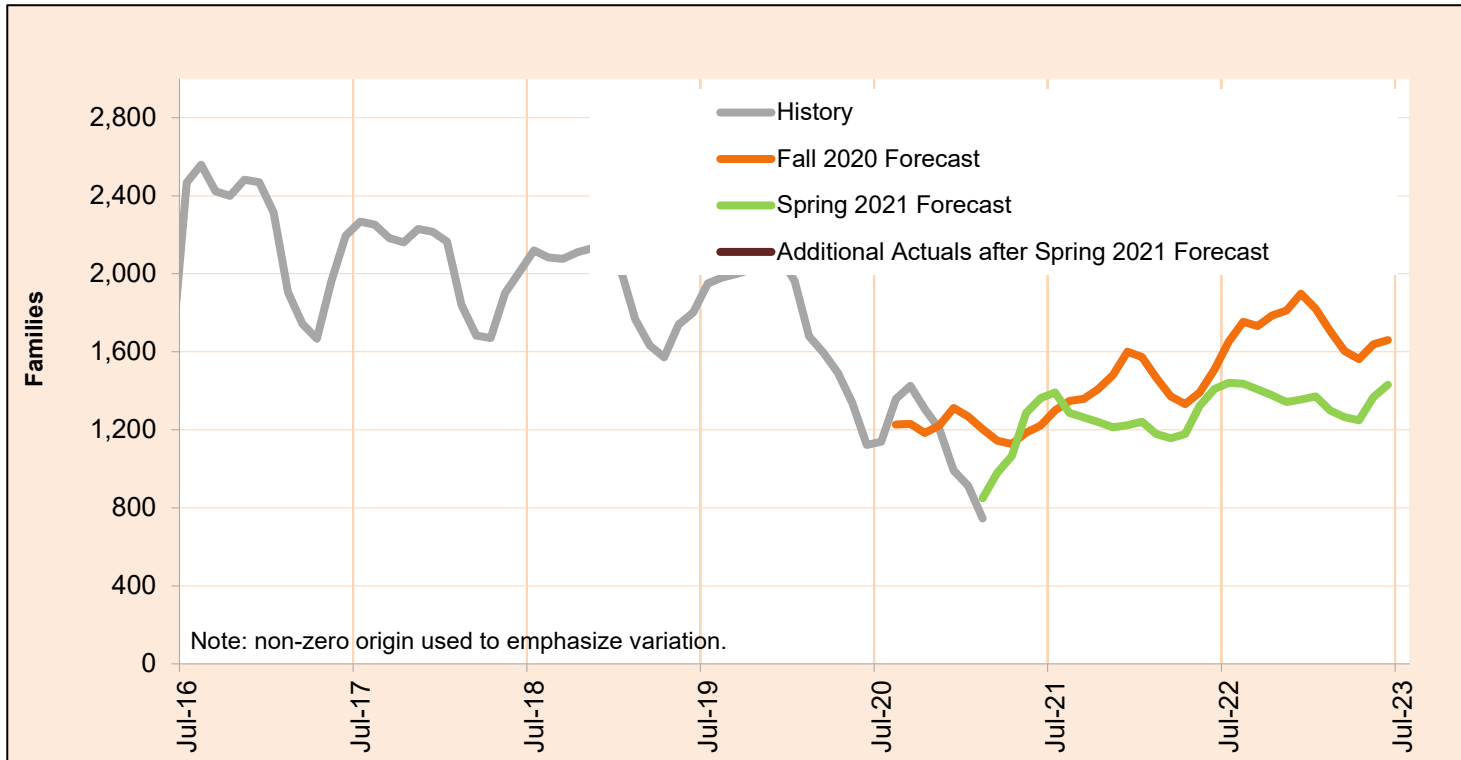
| Month | Actual | Spring 2021 Forecast | Over/Under Forecast (Spring 2021) | Fall 2020 Forecast | Over/Under Forecast (Fall 2020) |
|--------|--------|----------------------|-----------------------------------|--------------------|---------------------------------|
| Apr-20 | 19,662 | - | - | - | - |
| May-20 | 19,975 | - | - | - | - |
| Jun-20 | 19,603 | - | - | - | - |
| Jul-20 | 19,051 | - | - | - | - |
| Aug-20 | 18,603 | - | - | 19,887 | -1,284 -6.5% |
| Sep-20 | 18,193 | - | - | 20,052 | -1,859 -9.3% |
| Oct-20 | 17,799 | - | - | 20,436 | -2,637 -12.9% |
| Nov-20 | 17,596 | - | - | 20,672 | -3,076 -14.9% |
| Dec-20 | 17,482 | - | - | 20,975 | -3,493 -16.7% |
| Jan-21 | 17,148 | - | - | 21,275 | -4,127 -19.4% |
| Feb-21 | 17,031 | 16,954 | 77 0.5% | 21,284 | -4,253 -20.0% |
| Mar-21 | - | 16,819 | - | 21,279 | - |
| Apr-21 | - | 16,592 | - | 21,383 | - |

NOTE: In order to deal with an overlap in monthly data reporting between TANF and the after-TANF benefit known as Employment Payments, TANF caseload counts have been revised, starting in May 2016. In any month where an Employment Payment has been authorized, the TANF case has been removed from the caseload count. This eliminates the possibility of duplicate counts.

MARCH 2021

TANF Employment Payments

TANF Employment Payments (TANF-EP) provides short-term financial assistance (3 months) for families after exiting TANF. Cases began transitioning to TANF-EP in May, 2016.

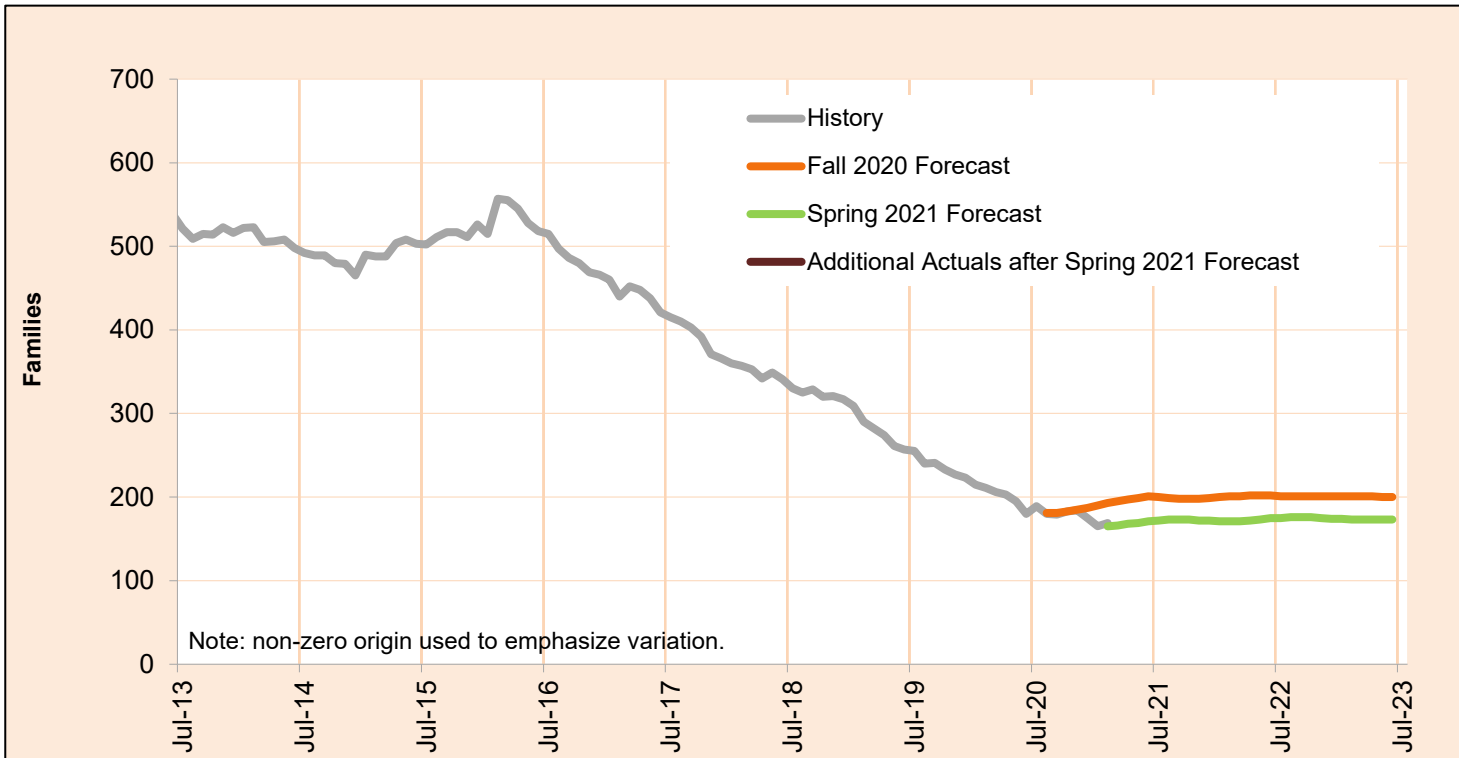


| Month | Actual | Spring 2021 Forecast | Over/Under Forecast (Spring 2021) | Fall 2020 Forecast | Over/Under Forecast (Fall 2020) |
|--------|--------|----------------------|-----------------------------------|--------------------|---------------------------------|
| Apr-20 | 1,493 | - | - | - | - |
| May-20 | 1,337 | - | - | - | - |
| Jun-20 | 1,123 | - | - | - | - |
| Jul-20 | 1,139 | - | - | - | - |
| Aug-20 | 1,359 | - | - | 1,227 | 132 10.8% |
| Sep-20 | 1,425 | - | - | 1,230 | 195 15.9% |
| Oct-20 | 1,307 | - | - | 1,184 | 123 10.4% |
| Nov-20 | 1,206 | - | - | 1,222 | -16 -1.3% |
| Dec-20 | 990 | - | - | 1,311 | -321 -24.5% |
| Jan-21 | 914 | - | - | 1,268 | -354 -27.9% |
| Feb-21 | 745 | 848 | -103 -12.1% | 1,203 | -458 -38.1% |
| Mar-21 | - | 979 | - | 1,145 | - |
| Apr-21 | - | 1,063 | - | 1,127 | - |

MARCH 2021

Pre-SSI

Pre-SSI provides temporary benefits for families while they apply for SSI.

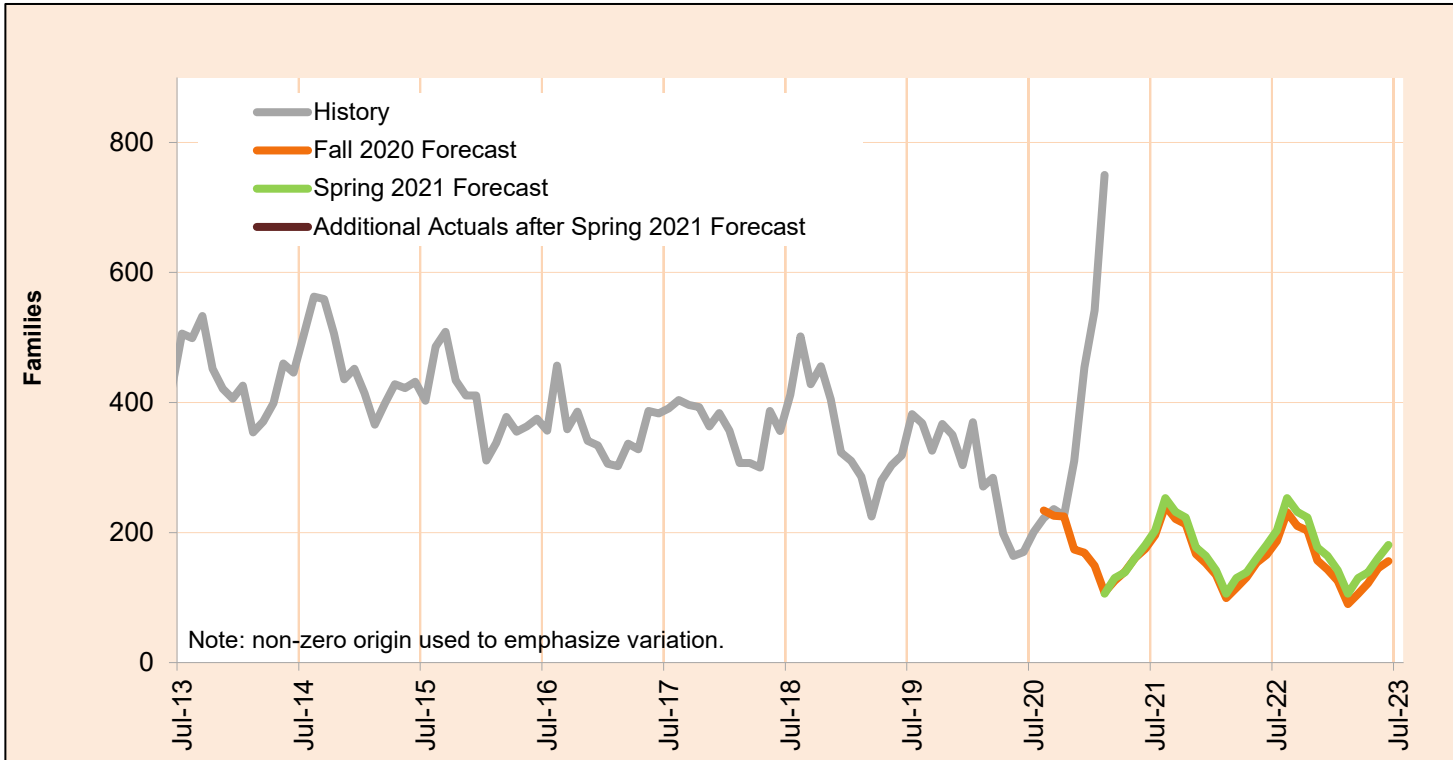


| Month | Actual | Spring 2021 Forecast | Over/Under Forecast (Spring 2021) | | Fall 2020 Forecast | Over/Under Forecast (Fall 2020) | |
|--------|--------|----------------------|-----------------------------------|------|--------------------|---------------------------------|--------|
| Apr-20 | 203 | - | - | - | - | - | - |
| May-20 | 195 | - | - | - | - | - | - |
| Jun-20 | 180 | - | - | - | - | - | - |
| Jul-20 | 189 | - | - | - | - | - | - |
| Aug-20 | 180 | - | - | - | 181 | -1 | -0.6% |
| Sep-20 | 179 | - | - | - | 181 | -2 | -1.1% |
| Oct-20 | 183 | - | - | - | 183 | 0 | 0.0% |
| Nov-20 | 184 | - | - | - | 185 | -1 | -0.5% |
| Dec-20 | 175 | - | - | - | 187 | -12 | -6.4% |
| Jan-21 | 165 | - | - | - | 190 | -25 | -13.2% |
| Feb-21 | 169 | 165 | 4 | 2.4% | 193 | -24 | -12.4% |
| Mar-21 | - | 166 | - | - | 195 | - | - |
| Apr-21 | - | 168 | - | - | 197 | - | - |

MARCH 2021

Temporary Assistance for Domestic Violence Survivors-With Payment*

Temporary Assistance for Domestic Violence Survivors (TA-DVS) provides short-term financial assistance (up to 90 days) for individuals fleeing an abusive partner or family member.



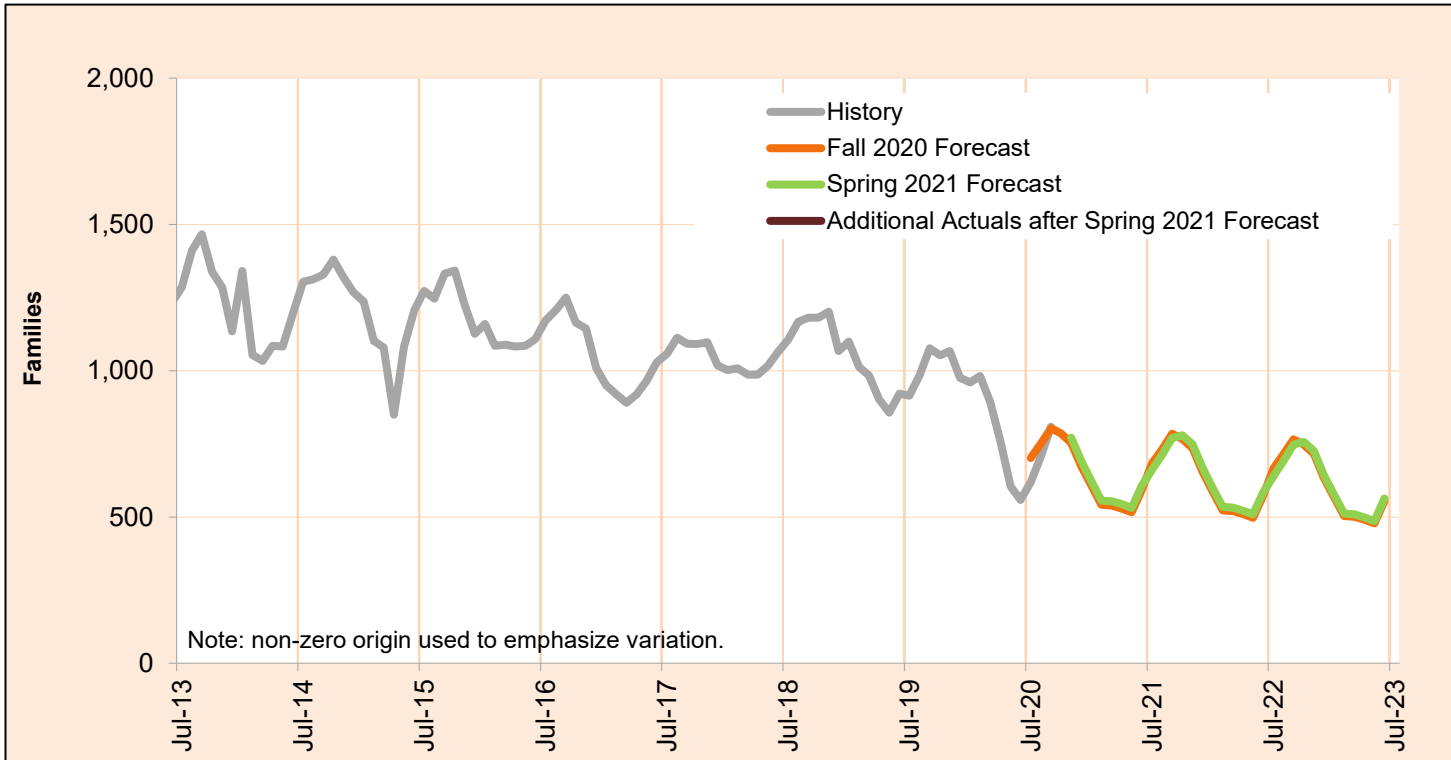
| Month | Actual | Spring 2021 Forecast | Over/Under Forecast (Spring 2021) | | Fall 2020 Forecast | Over/Under Forecast (Fall 2020) | |
|--------|--------|----------------------|-----------------------------------|--------|--------------------|---------------------------------|--------|
| Apr-20 | 198 | - | - | - | - | - | - |
| May-20 | 164 | - | - | - | - | - | - |
| Jun-20 | 170 | - | - | - | - | - | - |
| Jul-20 | 201 | - | - | - | - | - | - |
| Aug-20 | 222 | - | - | - | 234 | -12 | -5.1% |
| Sep-20 | 236 | - | - | - | 226 | 10 | 4.4% |
| Oct-20 | 226 | - | - | - | 225 | 1 | 0.4% |
| Nov-20 | 310 | - | - | - | 174 | 136 | 78.2% |
| Dec-20 | 454 | - | - | - | 169 | 285 | 168.6% |
| Jan-21 | 542 | - | - | - | 149 | 393 | 263.8% |
| Feb-21 | 750 | 106 | 644 | 607.5% | 108 | 642 | 594.4% |
| Mar-21 | - | 130 | - | - | 126 | - | - |
| Apr-21 | - | 139 | - | - | 140 | - | - |

*The likelihood that this data is inaccurate due to the rollout of the integrated eligibility system is high. Revisions are likely as the system becomes more stable.

MARCH 2021

Temporary Assistance for Domestic Violence Survivors-Without Payment*

Temporary Assistance for Domestic Violence Survivors Without Payment represents individuals fleeing an abusive partner or family member who did not accept short-term financial assistance, but did receive other forms of aid including referrals to other services.



| Month | Actual | Spring 2021 Forecast | Over/Under Forecast (Spring 2021) | Fall 2020 Forecast | Over/Under Forecast (Fall 2020) |
|--------|--------|----------------------|-----------------------------------|--------------------|---------------------------------|
| Apr-20 | 758 | - | - | - | - |
| May-20 | 604 | - | - | - | - |
| Jun-20 | 558 | - | - | - | - |
| Jul-20 | 618 | - | - | - | - |
| Aug-20 | 707 | - | - | 751 | -44 -5.9% |
| Sep-20 | 808 | - | - | 803 | 5 0.6% |
| Oct-20 | 795 | - | - | 785 | 10 1.3% |
| Nov-20 | - | 771 | - | 753 | - |
| Dec-20 | - | 690 | - | 672 | - |
| Jan-21 | - | 621 | - | 606 | - |
| Feb-21 | - | 556 | - | 541 | - |
| Mar-21 | - | 554 | - | 539 | - |
| Apr-21 | - | 543 | - | 528 | - |

*Data for this caseload is unavailable due to the rollout of the Integrated Eligibility system. Revisions will be published as soon as this data becomes available.