

OCTOBER 2020

Note: The changes in public policy, behavior, and economics due to the COVID-19 crisis have created greater uncertainty than is usually experienced in a forecast cycle. Details concerning the assumptions underlying all forecasted caseload areas will be contained in the Fall 2020 DHS-OHA Caseload Forecast report, which will be released at the end of October.

Due to the rollout of the new Integrated Eligibility (I.E.) system, Self-Sufficiency data originating in Josephine County is unavailable. Caseload counts may be revised as I.E. data becomes available.

Total Temporary Assistance for Needy Families

Month	Actual	Fall 2020 Forecast	Over/Under Forecast	%
Apr-20	19,662	-	-	-
May-20	19,975	-	-	-
Jun-20	19,603	-	-	-
Jul-20	19,048	-	-	-
Aug-20	18,507	19,887	-1,380	-6.9%
Sep-20	17,621	20,052	-2,431	-12.1%

TANF: One-Parent

Month	Actual	Fall 2020 Forecast	Over/Under Forecast	%
Apr-20	16,342	-	-	-
May-20	16,450	-	-	-
Jun-20	16,198	-	-	-
Jul-20	15,819	-	-	-
Aug-20	15,459	16,414	-955	-5.8%
Sep-20	14,782	16,557	-1,775	-10.7%

TANF: Two-Parent

Month	Actual	Fall 2020 Forecast	Over/Under Forecast	%
Apr-20	3,320	-	-	-
May-20	3,525	-	-	-
Jun-20	3,405	-	-	-
Jul-20	3,229	-	-	-
Aug-20	3,048	3,473	-425	-12.2%
Sep-20	2,839	3,495	-656	-18.8%

TANF Employment Payments

Month	Actual	Fall 2020 Forecast	Over/Under Forecast	%
Apr-20	1,493	-	-	-
May-20	1,337	-	-	-
Jun-20	1,123	-	-	-
Jul-20	1,138	-	-	-
Aug-20	1,339	1,227	112	9.1%
Sep-20	1,402	1,229	173	14.1%

Temporary Assistance for Domestic Violence Survivors - with Payment (Families)

Month	Actual	Fall 2020 Forecast	Over/Under Forecast	%
Apr-20	198	-	-	-
May-20	164	-	-	-
Jun-20	170	-	-	-
Jul-20	201	-	-	-
Aug-20	212	234	-22	-9.4%
Sep-20	219	226	-7	-3.1%

Temporary Assistance for Domestic Violence Survivors - without Payment (Families)

Month	Actual	Fall 2020 Forecast	Over/Under Forecast	%
Mar-20	892	-	-	-
Apr-20	758	-	-	-
May-20	604	-	-	-
Jun-20	558	-	-	-
Jul-20	618	702	-84	-12.0%
Aug-20	707	750	-43	-5.7%

Pre-SSI

Month	Actual	Fall 2020 Forecast	Over/Under Forecast	%
Apr-20	203	-	-	-
May-20	195	-	-	-
Jun-20	180	-	-	-
Jul-20	189	-	-	-
Aug-20	180	181	-1	-0.6%
Sep-20	179	181	-2	-1.1%

Total Supplemental Nutrition Assistance Programs

Month	Actual	Fall 2020 Forecast	Over/Under Forecast	%
Apr-20	398,593	-	-	-
May-20	410,416	-	-	-
Jun-20	418,494	-	-	-
Jul-20	423,649	-	-	-
Aug-20	419,138	449,052	-29,914	-6.7%
Sep-20	415,046	450,032	-34,986	-7.8%

OCTOBER 2020

SNAP: Aging and People with Disabilities

Month	Actual	Fall 2020 Forecast	Over/Under Forecast	%
Apr-20	134,833	-	-	-
May-20	135,944	-	-	-
Jun-20	136,473	-	-	-
Jul-20	136,992	-	-	-
Aug-20	136,279	138,559	-2,280	-1.6%
Sep-20	131,899	138,639	-6,740	-4.9%

SNAP: Self Sufficiency

Month	Actual	Fall 2020 Forecast	Over/Under Forecast	%
Apr-20	263,760	-	-	-
May-20	274,472	-	-	-
Jun-20	282,021	-	-	-
Jul-20	286,657	-	-	-
Aug-20	282,859	310,493	-27,634	-8.9%
Sep-20	283,147	311,393	-28,246	-9.1%

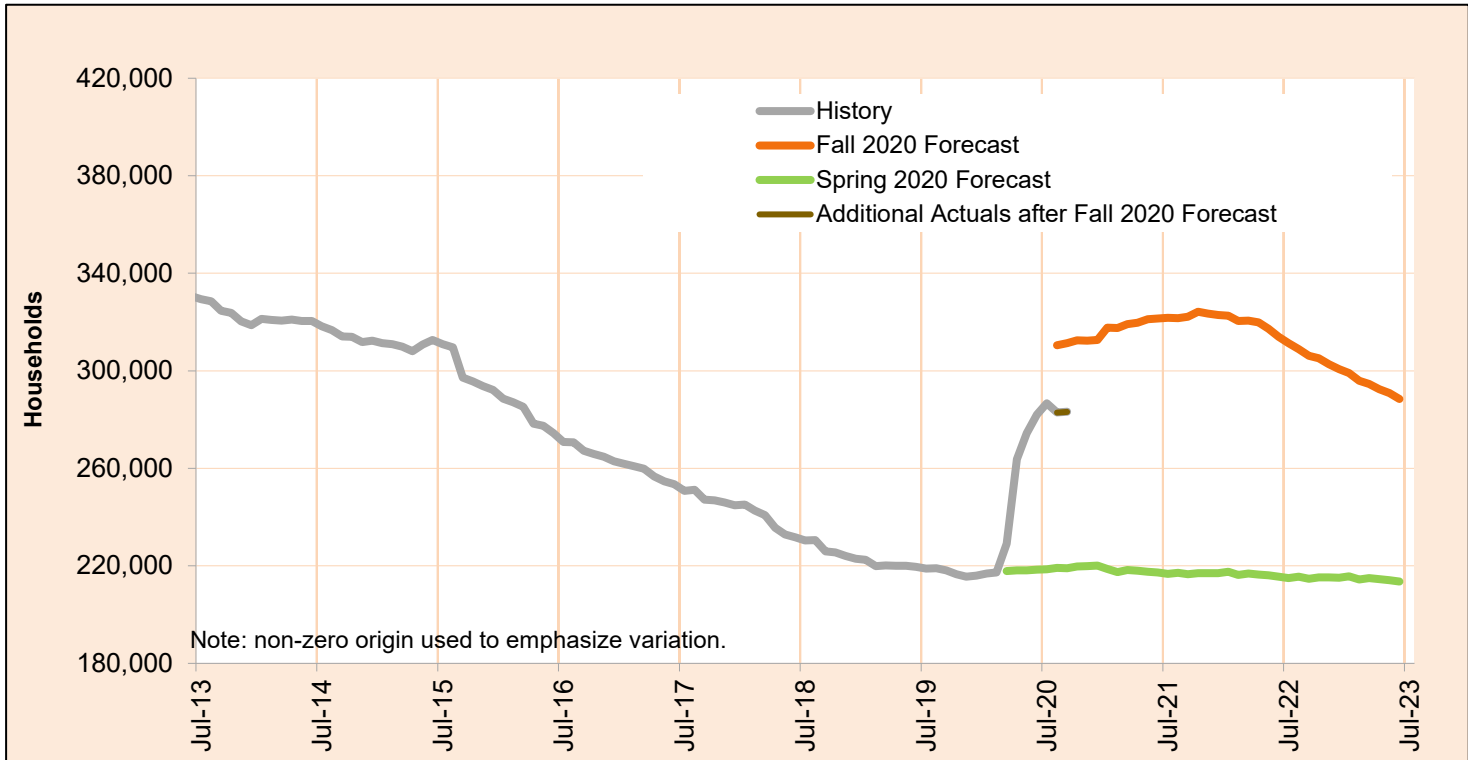
Employment Related Daycare (Families)

Month	Actual	Forecast Discontinued
Apr-20	6,985	
May-20	6,739	
Jun-20	6,829	
Jul-20	6,809	
Aug-20	6,820	
Sep-20	7,028	

OCTOBER 2020

SNAP: Self Sufficiency

This program supplements food budgets for low-income families, individuals and seniors and people with disabilities.

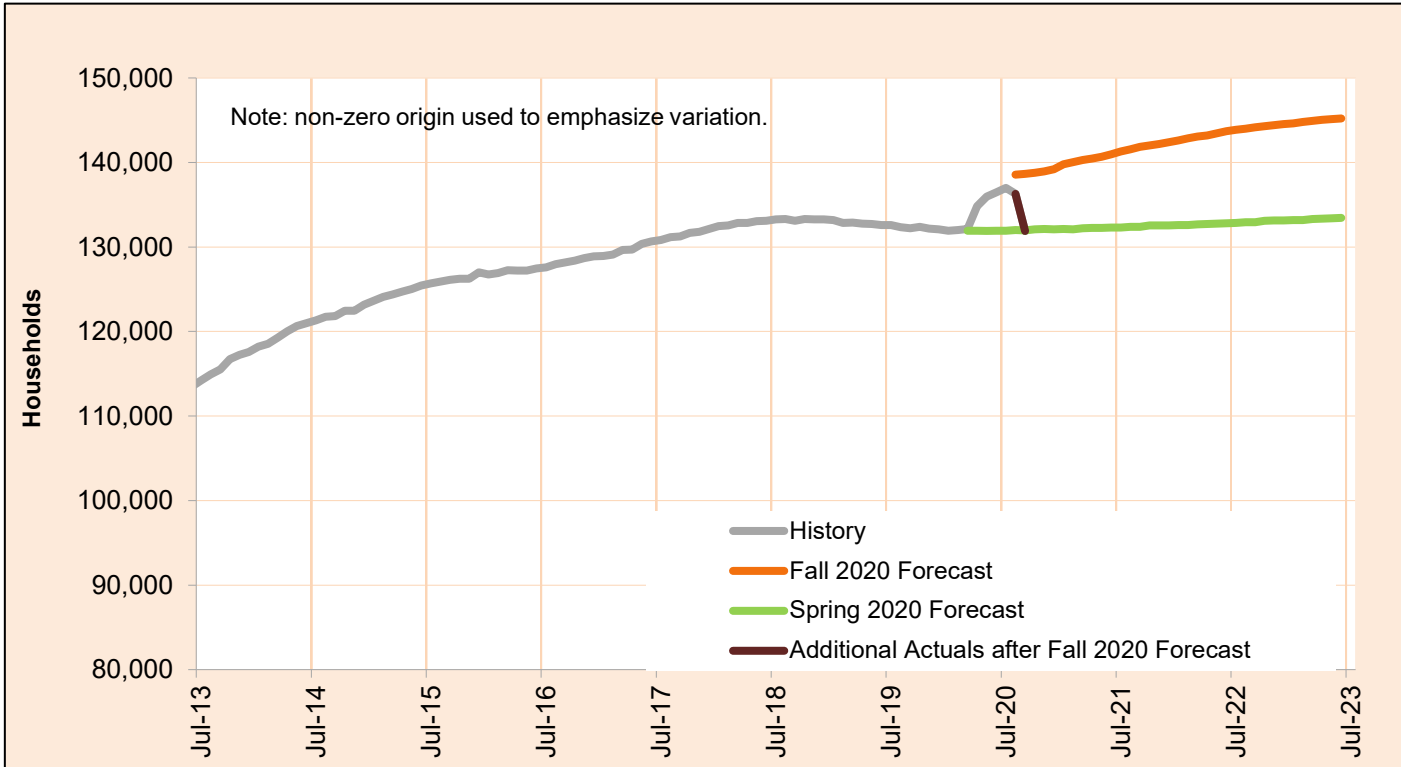


Month	Actual	Fall 2020 Forecast	Over/Under Forecast (Fall 2020)		Spring 2020 Forecast	Over/Under Forecast (Spring 2020)	
Nov-19	215,614	-	-	-	-	-	-
Dec-19	216,050	-	-	-	-	-	-
Jan-20	216,854	-	-	-	-	-	-
Feb-20	217,245	-	-	-	-	-	-
Mar-20	229,088	-	-	-	217,840	11,248	5.2%
Apr-20	263,760	-	-	-	218,210	45,550	20.9%
May-20	274,472	-	-	-	218,138	56,334	25.8%
Jun-20	282,021	-	-	-	218,480	63,541	29.1%
Jul-20	286,657	-	-	-	218,601	68,056	31.1%
Aug-20	282,859	310,493	-27,634	-8.9%	219,200	63,659	29.0%
Sep-20	283,147	311,393	-28,246	-9.1%	219,067	64,080	29.3%
Oct-20	-	312,448	-	-	219,722	-	-
Nov-20	-	312,370	-	-	219,816	-	-

OCTOBER 2020

SNAP: Aging and People with Disabilities

This program supplements food budgets for low-income families, individuals and seniors and people with disabilities.

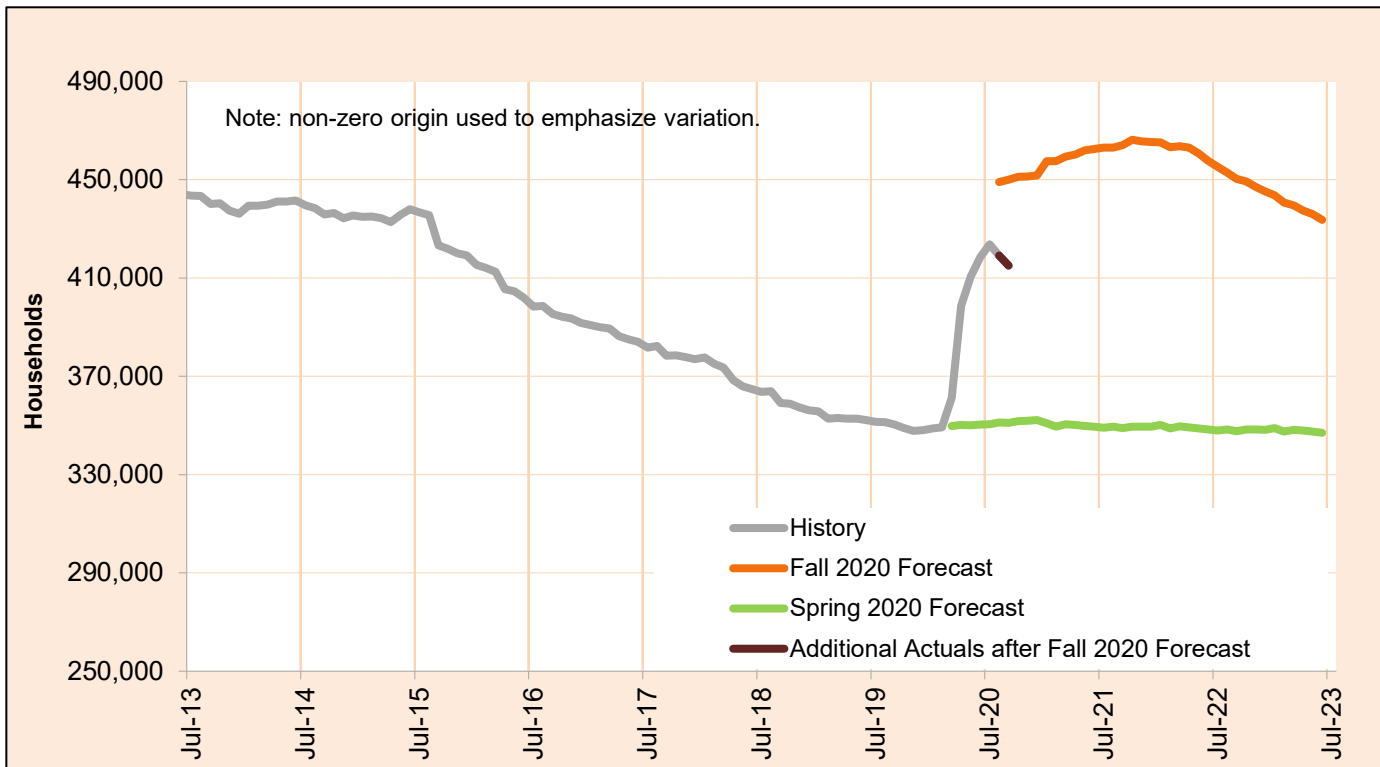


Month	Actual	Fall 2020 Forecast	Over/Under Forecast (Fall 2020)		Spring 2020 Forecast	Over/Under Forecast (Spring 2020)	
Nov-19	132,180	-	-	-	-	-	-
Dec-19	132,107	-	-	-	-	-	-
Jan-20	131,918	-	-	-	-	-	-
Feb-20	131,999	-	-	-	-	-	-
Mar-20	132,133	-	-	-	131,937	196	0.1%
Apr-20	134,833	-	-	-	131,934	2,899	2.2%
May-20	135,944	-	-	-	131,904	4,040	3.1%
Jun-20	136,473	-	-	-	131,915	4,558	3.5%
Jul-20	136,992	-	-	-	131,927	5,065	3.8%
Aug-20	136,279	138,559	-2,280	-1.6%	131,986	4,293	3.3%
Sep-20	131,899	138,639	-6,740	-4.9%	131,967	-68	-0.1%
Oct-20	-	138,774	-	-	132,096	-	-
Nov-20	-	138,947	-	-	132,124	-	-

OCTOBER 2020

Total Supplemental Nutrition Assistance Programs

This program supplements food budgets for low-income families, individuals and seniors and people with disabilities.

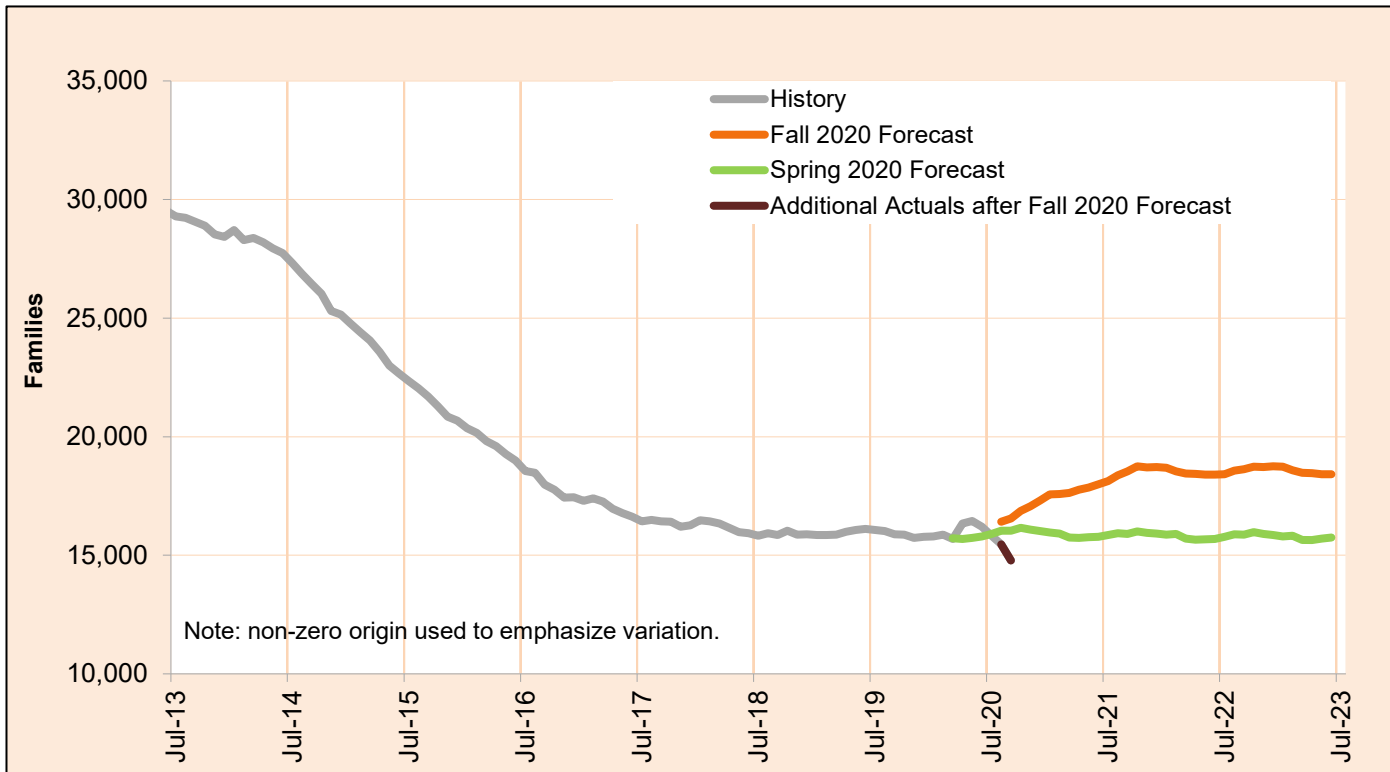


Month	Actual	Fall 2020 Forecast	Over/Under Forecast (Fall 2020)		Spring 2020 Forecast	Over/Under Forecast (Spring 2020)	
Nov-19	347,794	-	-	-	-	-	-
Dec-19	348,157	-	-	-	-	-	-
Jan-20	348,772	-	-	-	-	-	-
Feb-20	349,244	-	-	-	-	-	-
Mar-20	361,221	-	-	-	349,777	11,444	3.3%
Apr-20	398,593	-	-	-	350,144	48,449	13.8%
May-20	410,416	-	-	-	350,042	60,374	17.2%
Jun-20	418,494	-	-	-	350,395	68,099	19.4%
Jul-20	423,649	-	-	-	350,528	73,121	20.9%
Aug-20	419,138	449,052	-29,914	-6.7%	351,186	67,952	19.3%
Sep-20	415,046	450,032	-34,986	-7.8%	351,034	64,012	18.2%
Oct-20	-	451,222	-	-	351,818	-	-
Nov-20	-	451,317	-	-	351,940	-	-

OCTOBER 2020

Temporary Assistance for Needy Families - One Parent

The Temporary Assistance for Needy Families (TANF) One Parent program provides services and cash grants to low-income families with one parent living in the home to help them become self-sufficient.



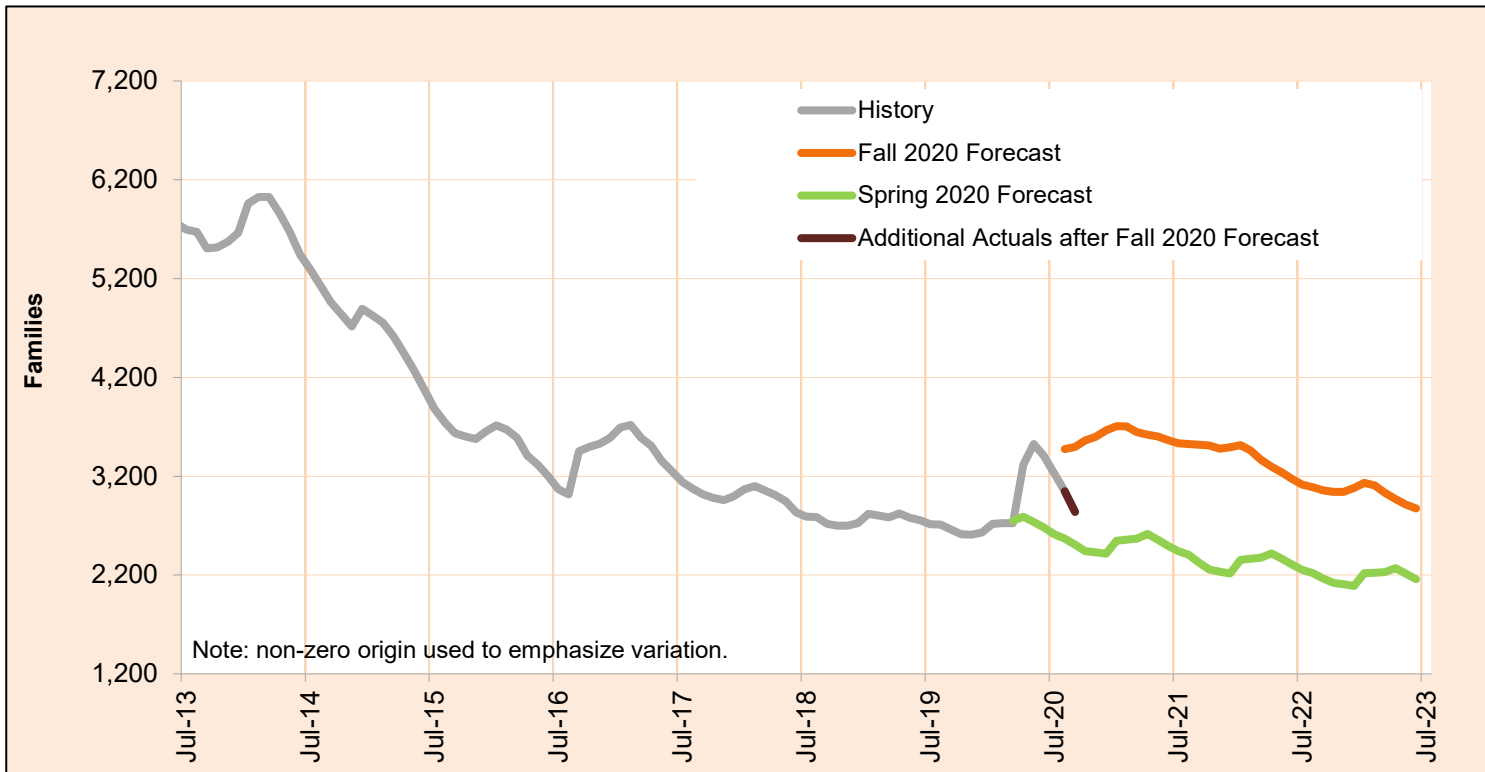
Month	Actual	Fall 2020 Forecast	Over/Under Forecast (Fall 2020)		Spring 2020 Forecast	Over/Under Forecast (Spring 2020)	
Nov-19	15,734	-	-	-	-	-	-
Dec-19	15,775	-	-	-	-	-	-
Jan-20	15,794	-	-	-	-	-	-
Feb-20	15,866	-	-	-	-	-	-
Mar-20	15,692	-	-	-	15,723	-31	-0.2%
Apr-20	16,342	-	-	-	15,691	651	4.1%
May-20	16,450	-	-	-	15,735	715	4.5%
Jun-20	16,198	-	-	-	15,791	407	2.6%
Jul-20	15,819	-	-	-	15,905	-86	-0.5%
Aug-20	15,459	16,414	-955	-5.8%	16,042	-583	-3.6%
Sep-20	14,782	16,557	-1,775	-10.7%	16,038	-1,256	-7.8%
Oct-20	-	16,875	-	-	16,158	-	-
Nov-20	-	17,072	-	-	16,088	-	-

NOTE: In order to deal with an overlap in monthly data reporting between TANF and the after-TANF benefit known as Employment Payments, TANF caseload counts have been revised, starting in May 2016. In any month where an Employment Payment has been authorized, the TANF case has been removed from the caseload count. This eliminates the possibility of duplicate counts.

OCTOBER 2020

Temporary Assistance for Needy Families - Two Parent

The Temporary Assistance for Needy Families (TANF) Two Parent program provides services and cash grants to low-income families with two parents in the home to help them become self-sufficient.



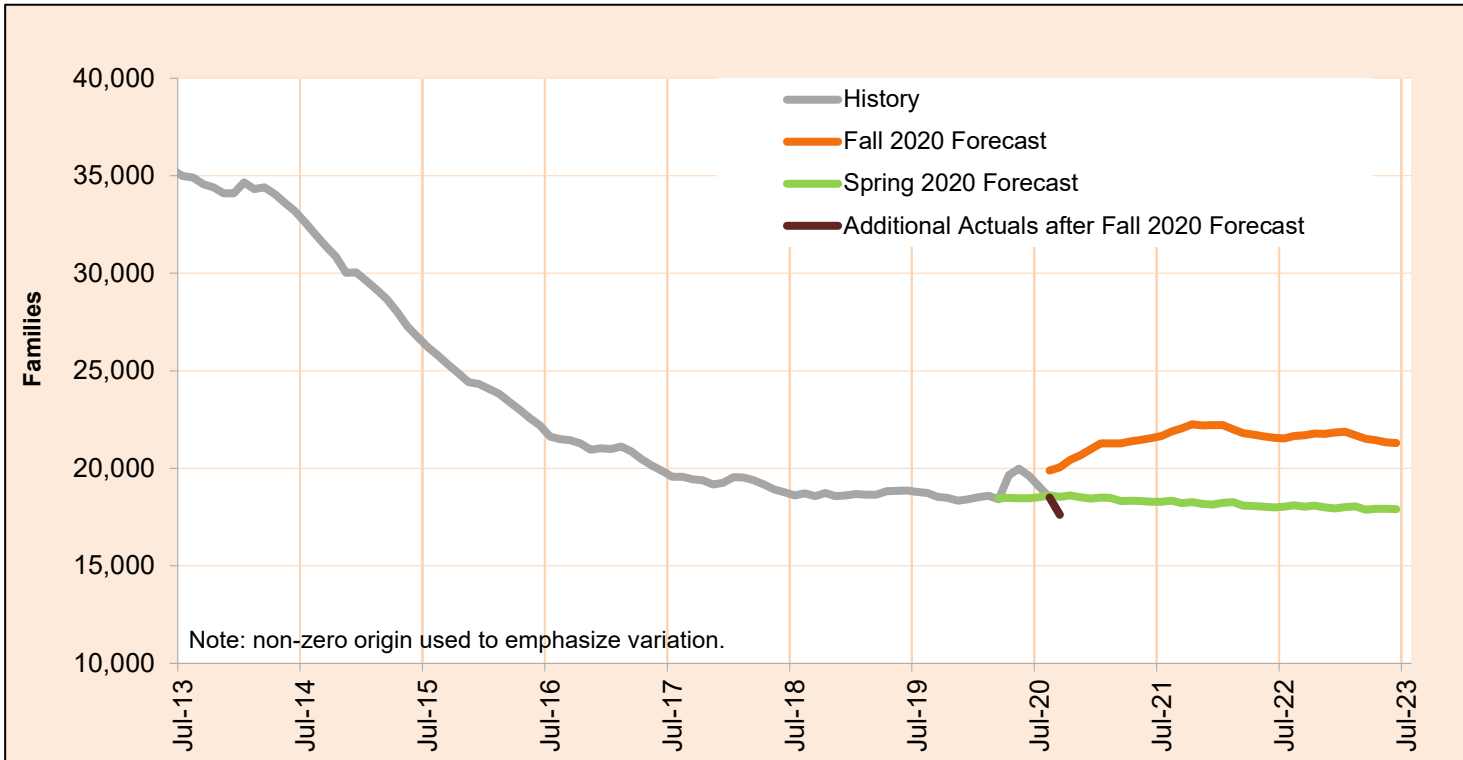
Month	Actual	Fall 2020 Forecast	Over/Under Forecast (Fall 2020)		Spring 2020 Forecast	Over/Under Forecast (Spring 2020)	
Nov-19	2,608	-	-	-	-	-	-
Dec-19	2,630	-	-	-	-	-	-
Jan-20	2,718	-	-	-	-	-	-
Feb-20	2,725	-	-	-	-	-	-
Mar-20	2,724	-	-	-	2,749	-25	-0.9%
Apr-20	3,320	-	-	-	2,790	530	19.0%
May-20	3,525	-	-	-	2,736	789	28.8%
Jun-20	3,405	-	-	-	2,680	725	27.1%
Jul-20	3,229	-	-	-	2,611	618	23.7%
Aug-20	3,048	3,473	-425	-12.2%	2,569	479	18.6%
Sep-20	2,839	3,495	-656	-18.8%	2,506	333	13.3%
Oct-20	-	3,561	-	-	2,443	-	-
Nov-20	-	3,600	-	-	2,430	-	-

NOTE: In order to deal with an overlap in monthly data reporting between TANF and the after-TANF benefit known as Employment Payments, TANF caseload counts have been revised, starting in May 2016. In any month where an Employment Payment has been authorized, the TANF case has been removed from the caseload count. This eliminates the possibility of duplicate counts.

OCTOBER 2020

Total Temporary Assistance for Needy Families

The Temporary Assistance for Needy Families (TANF) program provides services and cash grants to low-income families with children to help them become self-sufficient.



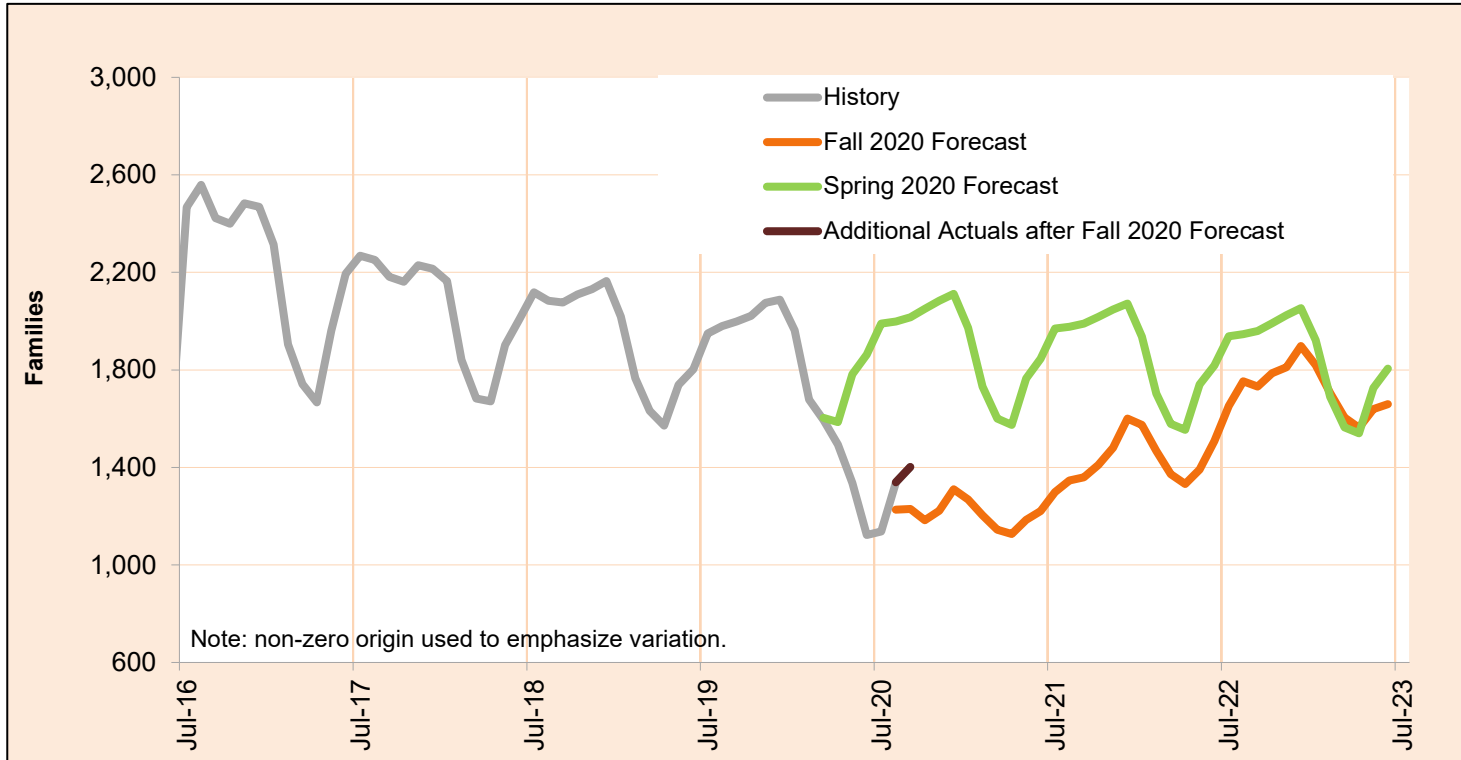
Month	Actual	Fall 2020 Forecast	Over/Under Forecast (Fall 2020)		Spring 2020 Forecast	Over/Under Forecast (Spring 2020)	
Nov-19	18,342	-	-	-	-	-	-
Dec-19	18,405	-	-	-	-	-	-
Jan-20	18,512	-	-	-	-	-	-
Feb-20	18,591	-	-	-	-	-	-
Mar-20	18,416	-	-	-	18,472	-56	-0.3%
Apr-20	19,662	-	-	-	18,481	1,181	6.4%
May-20	19,975	-	-	-	18,471	1,504	8.1%
Jun-20	19,603	-	-	-	18,471	1,132	6.1%
Jul-20	19,048	-	-	-	18,516	532	2.9%
Aug-20	18,507	19,887	-1,380	-6.9%	18,611	-104	-0.6%
Sep-20	17,621	20,052	-2,431	-12.1%	18,544	-923	-5.0%
Oct-20	-	20,436	-	-	18,601	-	-
Nov-20	-	20,672	-	-	18,518	-	-

NOTE: In order to deal with an overlap in monthly data reporting between TANF and the after-TANF benefit known as Employment Payments, TANF caseload counts have been revised, starting in May 2016. In any month where an Employment Payment has been authorized, the TANF case has been removed from the caseload count. This eliminates the possibility of duplicate counts.

OCTOBER 2020

TANF Employment Payments

TANF Employment Payments (TANF-EP) provides short-term financial assistance (3 months) for families after exiting TANF. Cases began transitioning to TANF-EP in May, 2016.

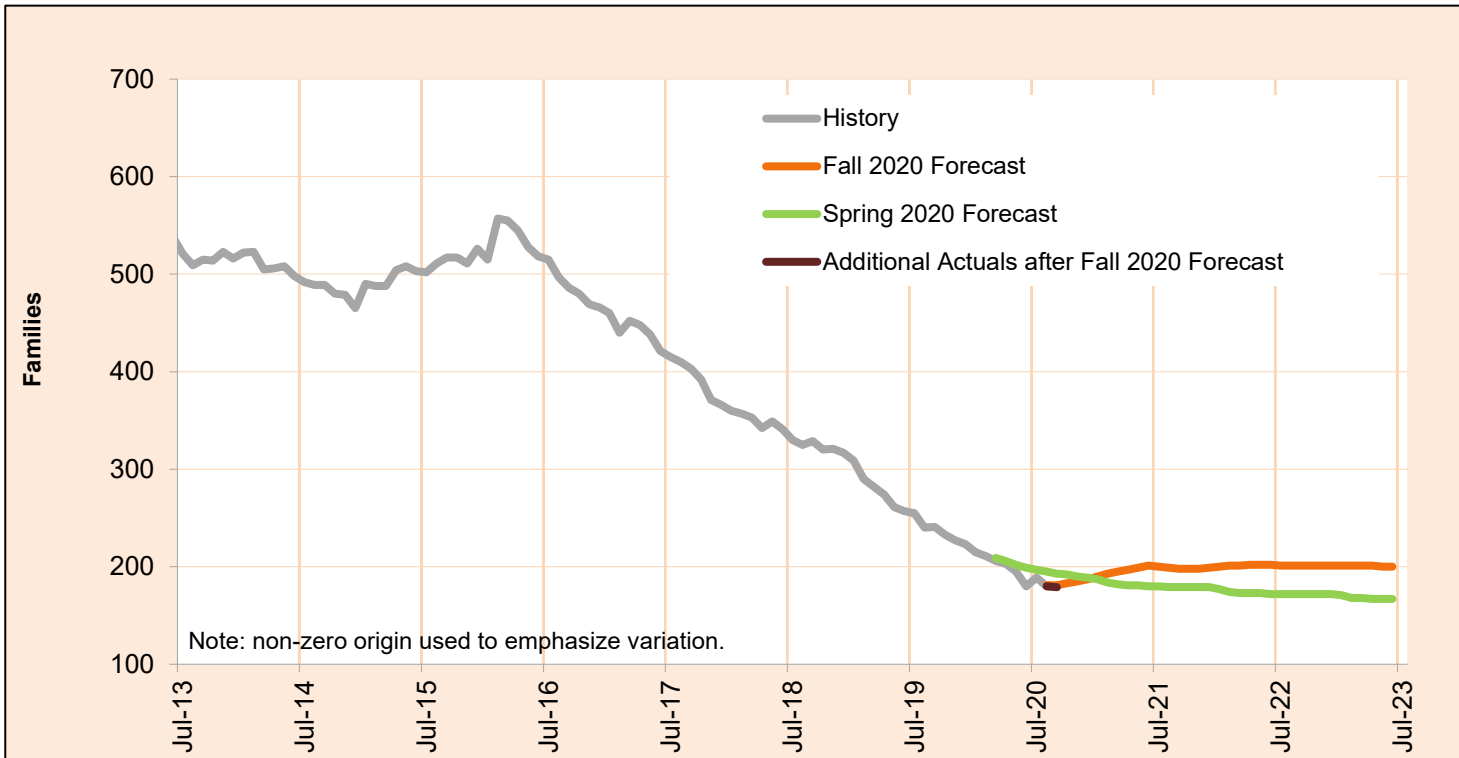


Month	Actual	Fall 2020 Forecast	Over/Under Forecast (Fall 2020)		Spring 2020 Forecast	Over/Under Forecast (Spring 2020)	
Nov-19	2,075	-	-	-	-	-	-
Dec-19	2,088	-	-	-	-	-	-
Jan-20	1,962	-	-	-	-	-	-
Feb-20	1,679	-	-	-	-	-	-
Mar-20	1,595	-	-	-	1,603	-8	-0.5%
Apr-20	1,493	-	-	-	1,586	-93	-5.9%
May-20	1,337	-	-	-	1,782	-445	-25.0%
Jun-20	1,123	-	-	-	1,863	-740	-39.7%
Jul-20	1,138	-	-	-	1,990	-852	-42.8%
Aug-20	1,339	1,227	112	9.1%	1,999	-660	-33.0%
Sep-20	1,402	1,229	173	14.1%	2,016	-614	-30.5%
Oct-20	-	1,183	-	-	2,051	-	-
Nov-20	-	1,221	-	-	2,084	-	-

OCTOBER 2020

Pre-SSI

Pre-SSI provides temporary benefits for families while they apply for SSI.

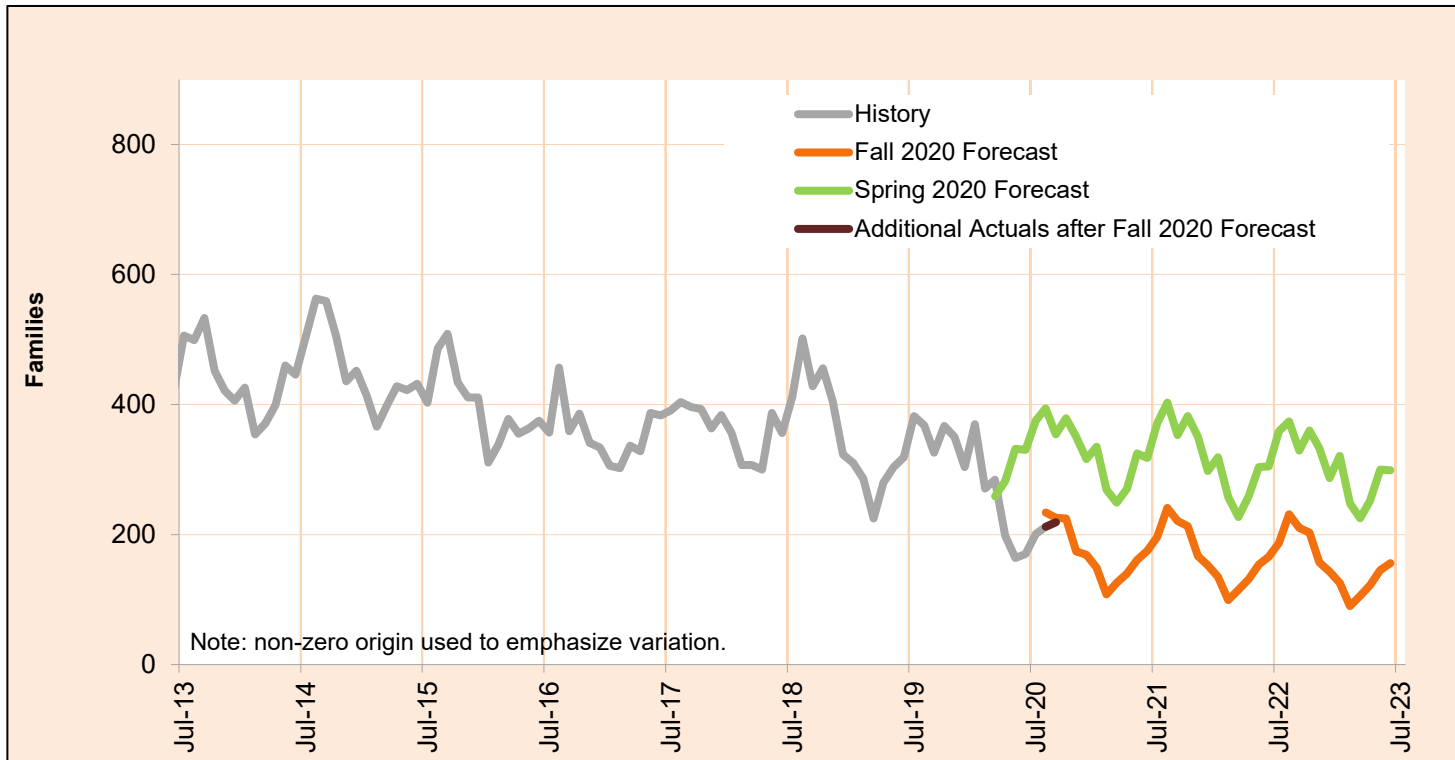


Month	Actual	Fall 2020 Forecast	Over/Under Forecast (Fall 2020)		Spring 2020 Forecast	Over/Under Forecast (Spring 2020)	
Nov-19	227	-	-	-	-	-	-
Dec-19	223	-	-	-	-	-	-
Jan-20	215	-	-	-	-	-	-
Feb-20	211	-	-	-	-	-	-
Mar-20	206	-	-	-	209	-3	-1.4%
Apr-20	203	-	-	-	206	-3	-1.5%
May-20	195	-	-	-	202	-7	-3.5%
Jun-20	180	-	-	-	199	-19	-9.5%
Jul-20	189	-	-	-	197	-8	-4.1%
Aug-20	180	181	-1	-0.6%	195	-15	-7.7%
Sep-20	179	181	-2	-1.1%	193	-14	-7.3%
Oct-20	-	183	-	-	192	-	-
Nov-20	-	185	-	-	190	-	-

OCTOBER 2020

Temporary Assistance for Domestic Violence Survivors-With Payment

Temporary Assistance for Domestic Violence Survivors (TA-DVS) provides short-term financial assistance (up to 90 days) for individuals fleeing an abusive partner or family member.

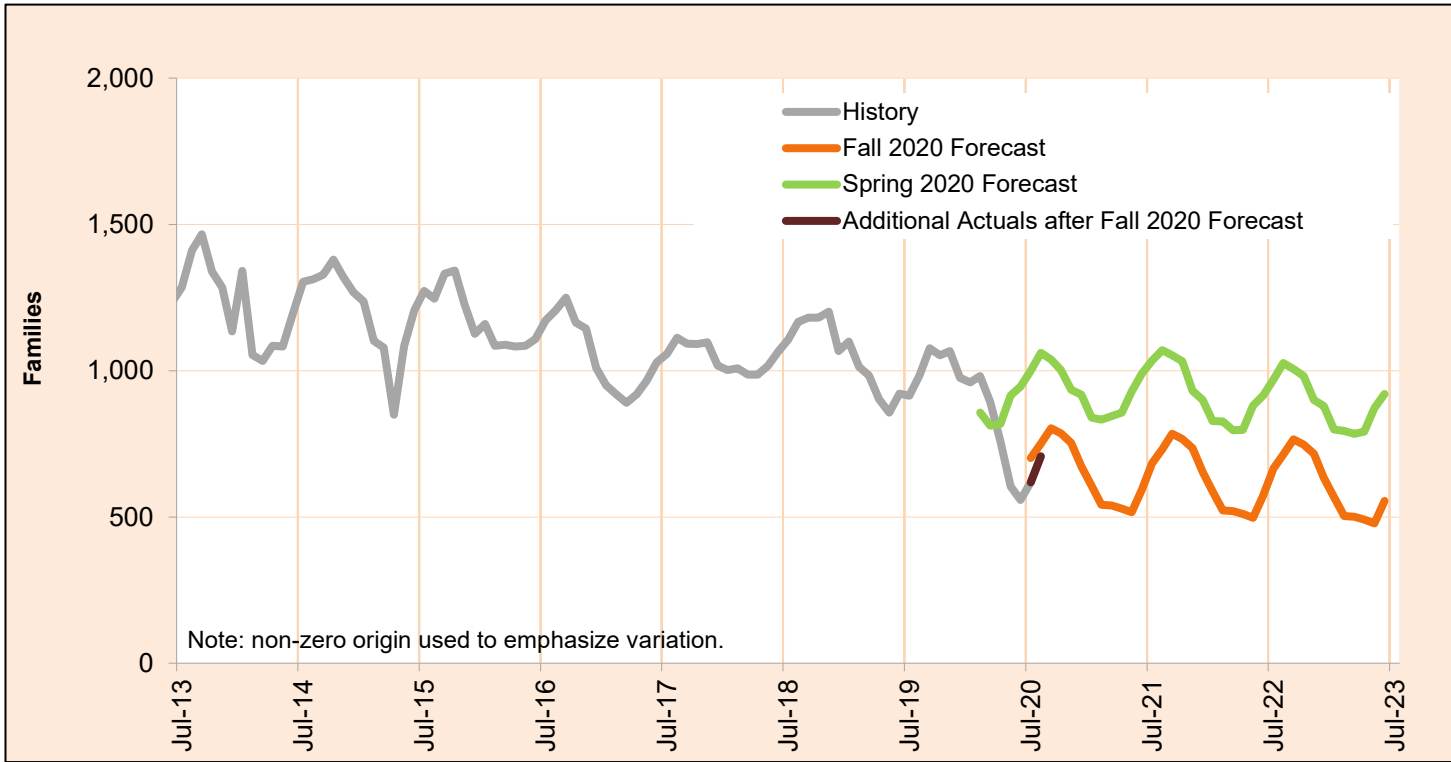


Month	Actual	Fall 2020 Forecast	Over/Under Forecast (Fall 2020)		Spring 2020 Forecast	Over/Under Forecast (Spring 2020)	
Nov-19	350	-	-	-	-	-	-
Dec-19	304	-	-	-	-	-	-
Jan-20	370	-	-	-	-	-	-
Feb-20	271	-	-	-	-	-	-
Mar-20	284	-	-	-	259	25	9.7%
Apr-20	198	-	-	-	282	-84	-29.8%
May-20	164	-	-	-	332	-168	-50.6%
Jun-20	170	-	-	-	330	-160	-48.5%
Jul-20	201	-	-	-	375	-174	-46.4%
Aug-20	212	234	-22	-9.4%	394	-182	-46.2%
Sep-20	219	226	-7	-3.1%	354	-135	-38.1%
Oct-20	-	225	-	-	379	-	-
Nov-20	-	174	-	-	350	-	-

OCTOBER 2020

Temporary Assistance for Domestic Violence Survivors-Without Payment

Temporary Assistance for Domestic Violence Survivors Without Payment represents individuals fleeing an abusive partner or family member who did not accept short-term financial assistance, but did receive other forms of aid including referrals to other services.



Month	Actual	Fall 2020 Forecast	Over/Under Forecast (Fall 2020)		Spring 2020 Forecast	Over/Under Forecast (Spring 2020)	
Nov-19	1,067	-	-	-	-	-	-
Dec-19	975	-	-	-	-	-	-
Jan-20	960	-	-	-	-	-	-
Feb-20	981	-	-	-	857	124	14.5%
Mar-20	892	-	-	-	812	80	9.9%
Apr-20	758	-	-	-	818	-60	-7.3%
May-20	604	-	-	-	916	-312	-34.1%
Jun-20	558	-	-	-	945	-387	-41.0%
Jul-20	618	702	-84	-12.0%	1,000	-382	-38.2%
Aug-20	707	751	-44	-5.9%	1,061	-354	-33.4%
Sep-20	-	803	-	-	1,038	-	-
Oct-20	-	785	-	-	1,002	-	-
Nov-20	-	752	-	-	935	-	-