

Monthly Caseload Forecast Variance Report
 Department of Human Services
 Vocational Rehabilitation

MAY 2020

Note: The Spring 2020 caseload forecast is based on data (whether preliminary or final) available through February 2020. The resulting forecasts do not account for the rapid changes that occurred due to the Governor's Emergency Order mandating physical distancing or the economic effects of a global pandemic. The changes in public policy, behavior, and economics due to the current crisis will be accounted for in the Fall 2020 forecast, which will be released in September.

Total Vocational Rehabilitation Forecast	In Plan
---	----------------

Month	Actual	Spring 2020		%	Month	Actual	Spring 2020		%
		Forecast	Over/ Under Forecast				Forecast	Over/ Under Forecast	
Oct-19	10,037	-	-	-	Oct-19	6,530	-	-	-
Nov-19	9,902	-	-	-	Nov-19	6,460	-	-	-
Dec-19	9,914	-	-	-	Dec-19	6,506	-	-	-
Jan-20	10,006	-	-	-	Jan-20	6,558	-	-	-
Feb-20	10,006	10,131	-125	-1.2%	Feb-20	6,508	6,515	-7	-0.1%
Mar-20	9,712	10,196	-484	-4.7%	Mar-20	6,358	6,494	-136	-2.1%

In Application	In Eligibility
-----------------------	-----------------------

Month	Actual	Spring 2020		%	Month	Actual	Spring 2020		%
		Forecast	Over/ Under Forecast				Forecast	Over/ Under Forecast	
Oct-19	1,155	-	-	-	Oct-19	2,220	-	-	-
Nov-19	1,121	-	-	-	Nov-19	2,198	-	-	-
Dec-19	1,036	-	-	-	Dec-19	2,248	-	-	-
Jan-20	1,109	-	-	-	Jan-20	2,229	-	-	-
Feb-20	1,214	1,249	-35	-2.8%	Feb-20	2,176	2,260	-84	-3.7%
Mar-20	946	1,330	-384	-28.9%	Mar-20	2,307	2,263	44	1.9%

Cognitive Impairments	Psychosocial & Other Mental Impairments
------------------------------	--

Month	Actual	Spring 2020		%	Month	Actual	Spring 2020		%
		Forecast	Over/ Under Forecast				Forecast	Over/ Under Forecast	
Oct-19	1,798	-	-	-	Oct-19	2,651	-	-	-
Nov-19	1,763	-	-	-	Nov-19	2,621	-	-	-
Dec-19	1,754	-	-	-	Dec-19	2,636	-	-	-
Jan-20	1,782	-	-	-	Jan-20	2,695	-	-	-
Feb-20	1,780	1,775	5	0.3%	Feb-20	2,720	2,659	61	2.3%
Mar-20	1,726	1,787	-61	-3.4%	Mar-20	2,641	2,678	-37	-1.4%

Monthly Caseload Forecast Variance Report
 Department of Human Services
 Vocational Rehabilitation

MAY 2020

IDD in Prior 12 months

Month	Actual	Spring 2020 Forecast	Over/ Under Forecast	%
Oct-19	2,870	-	-	-
Nov-19	2,823	-	-	-
Dec-19	2,844	-	-	-
Jan-20	2,844	-	-	-
Feb-20	2,838	2,866	-28	-1.0%
Mar-20	2,755	2,881	-126	-4.4%

Deafness/Blindness

Month	Actual	Spring 2020 Forecast	Over/ Under Forecast	%
Oct-19	905	-	-	-
Nov-19	885	-	-	-
Dec-19	863	-	-	-
Jan-20	867	-	-	-
Feb-20	860	873	-13	-1.5%
Mar-20	822	872	-50	-5.7%

Physical Impairments

Month	Actual	Spring 2020 Forecast	Over/ Under Forecast	%
Oct-19	1,813	-	-	-
Nov-19	1,810	-	-	-
Dec-19	1,817	-	-	-
Jan-20	1,818	-	-	-
Feb-20	1,808	1,851	-43	-2.3%
Mar-20	1,768	1,869	-101	-5.4%

Post Employment Services

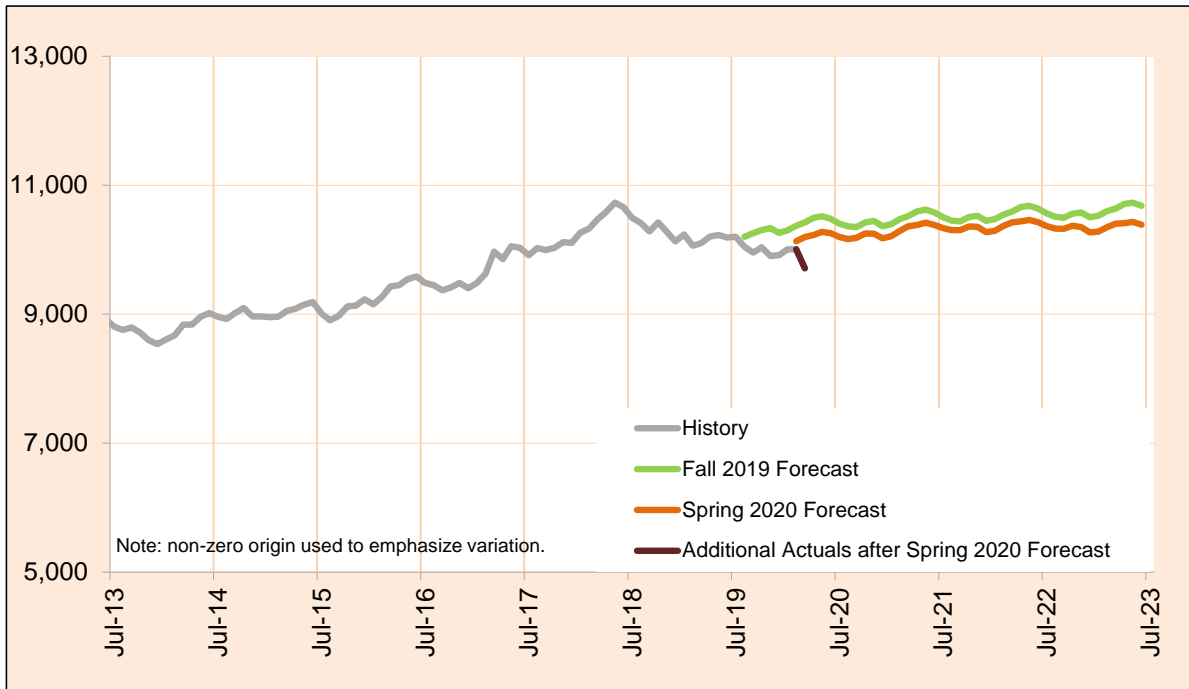
Month	Actual	Spring 2020 Forecast	Over/ Under Forecast	%
Oct-19	132	-	-	-
Nov-19	123	-	-	-
Dec-19	124	-	-	-
Jan-20	110	-	-	-
Feb-20	108	107	1	0.9%
Mar-20	101	109	-8	-7.3%

Monthly Caseload Forecast Variance Report
 Department of Human Services
 Vocational Rehabilitation

MAY 2020

Total Vocational Rehabilitation (VR)

Count of all clients who had an active VR episode at any time in the given month. VR helps individuals with physical and mental disabilities to obtain and retain employment that matches their skills, potential, and interest. The services are provided through local VR offices which partner with community resources and local providers.



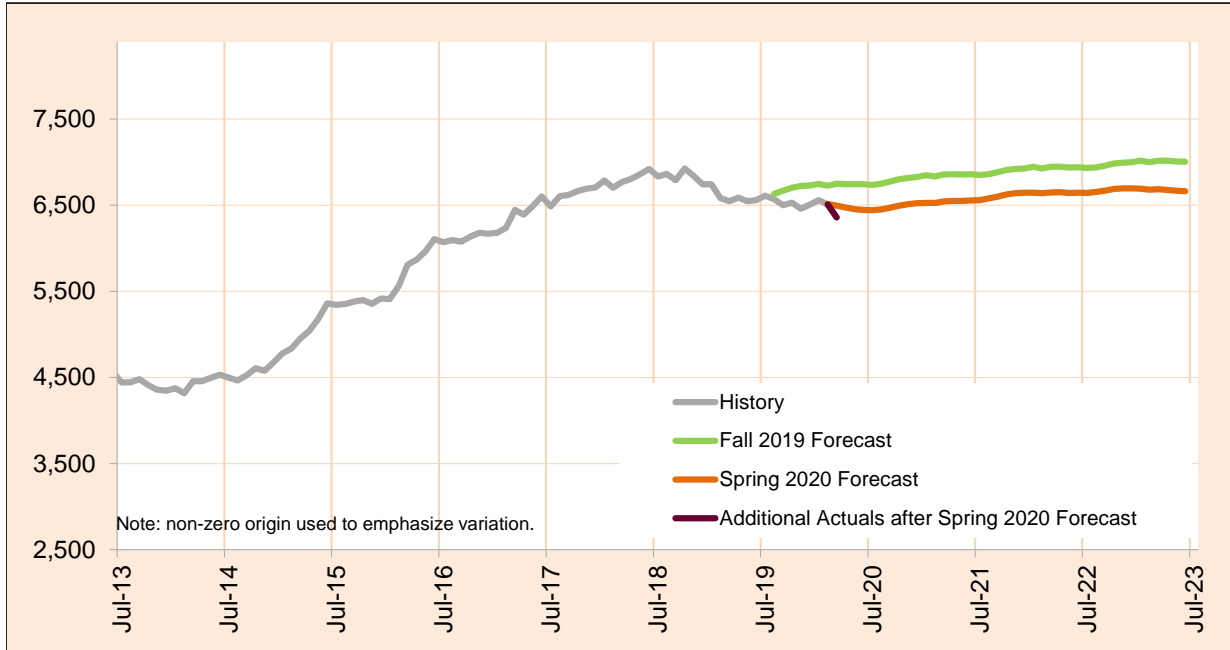
Month	Actual	Spring 2020 Forecast	Over/Under Forecast (Spring 2020)		Fall 2019 Forecast	Over/Under Forecast (Fall 2019)	
Aug-19	10,044	-	-	-	10,200	-156	-1.5%
Sep-19	9,953	-	-	-	10,256	-303	-3.0%
Oct-19	10,037	-	-	-	10,302	-265	-2.6%
Nov-19	9,902	-	-	-	10,335	-433	-4.2%
Dec-19	9,914	-	-	-	10,259	-345	-3.4%
Jan-20	10,006	-	-	-	10,298	-292	-2.8%
Feb-20	10,006	10,131	-125	-1.2%	10,373	-367	-3.5%
Mar-20	9,712	10,196	-484	-4.7%	10,422	-710	-6.8%
Apr-20	-	10,227	-	-	10,494	-	-
May-20	-	10,274	-	-	10,520	-	-
Jun-20	-	10,257	-	-	10,480	-	-
Jul-20	-	10,198	-	-	10,405	-	-

Monthly Caseload Forecast Variance Report
 Department of Human Services
 Vocational Rehabilitation

MAY 2020

In Plan

In Plan includes everyone who has an active plan at any time in a given month.



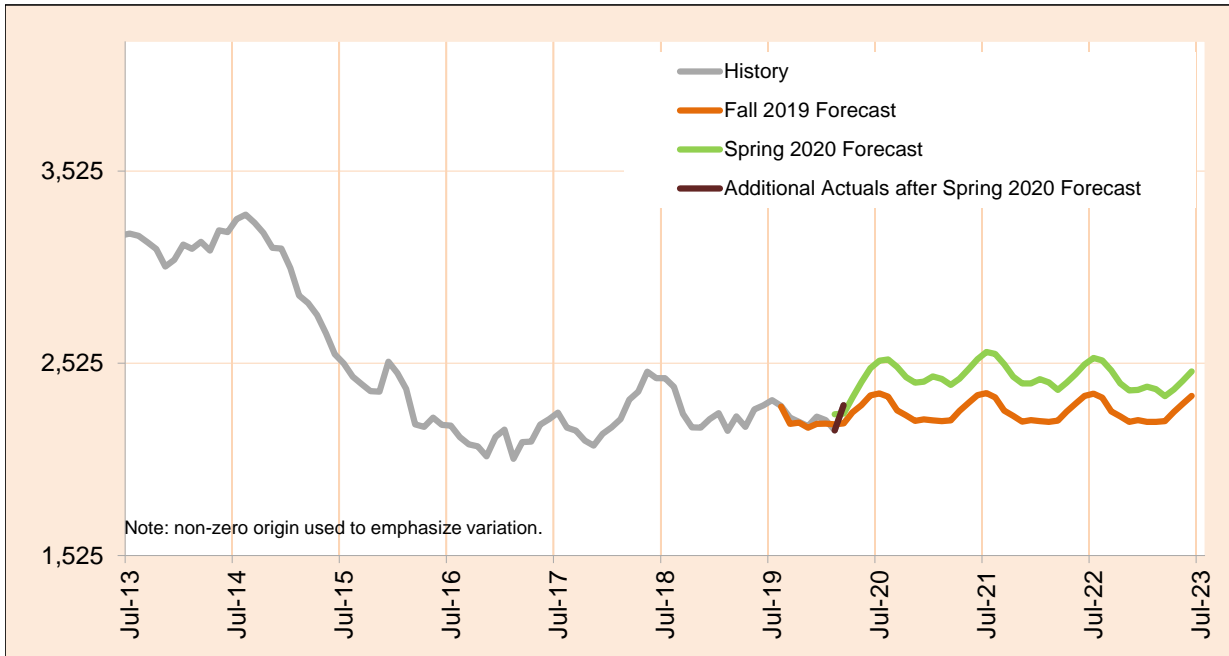
Month	Actual	Spring 2020 Forecast	Over/Under Forecast (Spring 2020)		Fall 2019 Forecast	Over/Under Forecast (Fall 2019)	
Aug-19	6,569	-	-	-	6,631	-62	-0.9%
Sep-19	6,499	-	-	-	6,668	-169	-2.5%
Oct-19	6,530	-	-	-	6,703	-173	-2.6%
Nov-19	6,460	-	-	-	6,723	-263	-3.9%
Dec-19	6,506	-	-	-	6,728	-222	-3.3%
Jan-20	6,558	-	-	-	6,746	-188	-2.8%
Feb-20	6,508	6,515	-7	-0.1%	6,727	-219	-3.3%
Mar-20	6,358	6,494	-136	-2.1%	6,748	-390	-5.8%
Apr-20	-	6,473	-	-	6,743	-	-
May-20	-	6,452	-	-	6,742	-	-
Jun-20	-	6,446	-	-	6,742	-	-
Jul-20	-	6,441	-	-	6,736	-	-

Monthly Caseload Forecast Variance Report
 Department of Human Services
 Vocational Rehabilitation

MAY 2020

In Eligibility

In Eligibility includes everyone who were in eligibility stage on the last day of the month or exited VR during the given month without advancing to the next stage. Typically, clients in this stage are either waiting for the final eligibility determination or are in the process of plan developing.



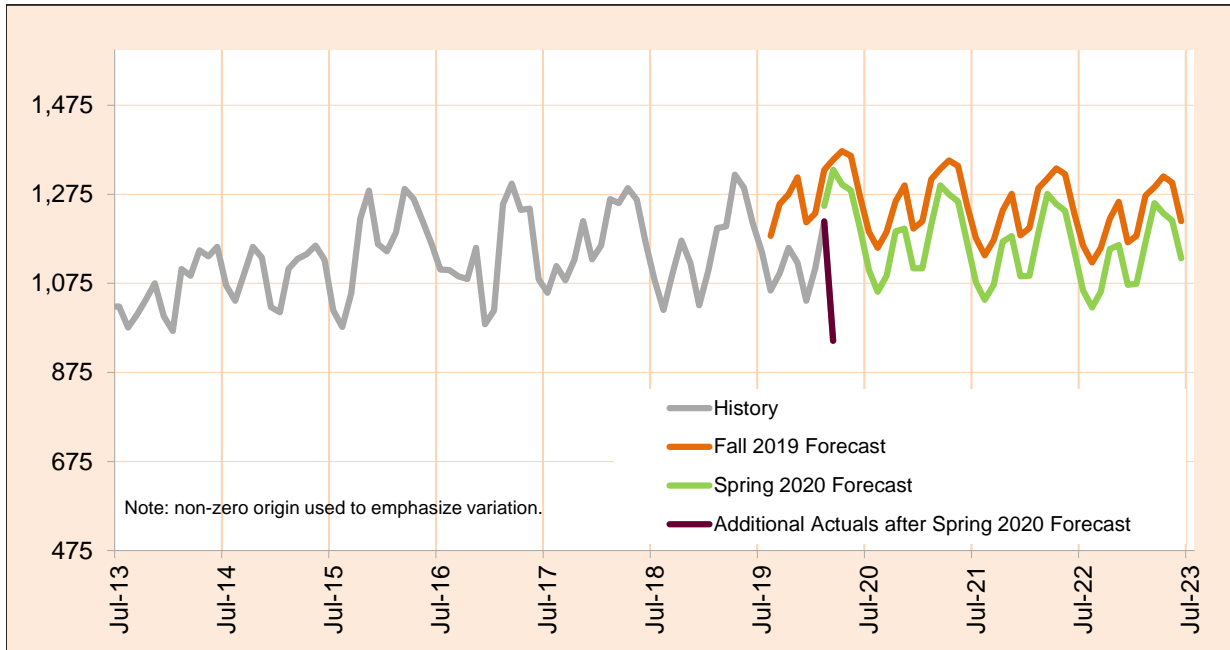
Month	Actual	Spring 2020 Forecast	Over/Under Forecast (Spring 2020)		Fall 2019 Forecast	Over/Under Forecast (Fall 2019)	
Aug-19	2,303	-	-	-	2,299	4	0.2%
Sep-19	2,243	-	-	-	2,210	33	1.5%
Oct-19	2,220	-	-	-	2,216	4	0.2%
Nov-19	2,198	-	-	-	2,190	8	0.4%
Dec-19	2,248	-	-	-	2,210	38	1.7%
Jan-20	2,229	-	-	-	2,211	18	0.8%
Feb-20	2,176	2,260	-84	-3.7%	2,207	-31	-1.4%
Mar-20	2,307	2,263	44	1.9%	2,212	95	4.3%
Apr-20	-	2,347	-	-	2,270	-	-
May-20	-	2,427	-	-	2,308	-	-
Jun-20	-	2,500	-	-	2,358	-	-
Jul-20	-	2,539	-	-	2,369	-	-

Monthly Caseload Forecast Variance Report
 Department of Human Services
 Vocational Rehabilitation

MAY 2020

In Application

In Application includes everyone who were in application stage on the last day of the month or exited VR during the given month without advancing to the next stage. VR case is initiated by client submitting his/her application to VR. In this stage application is reviewed and eligibility assessed.



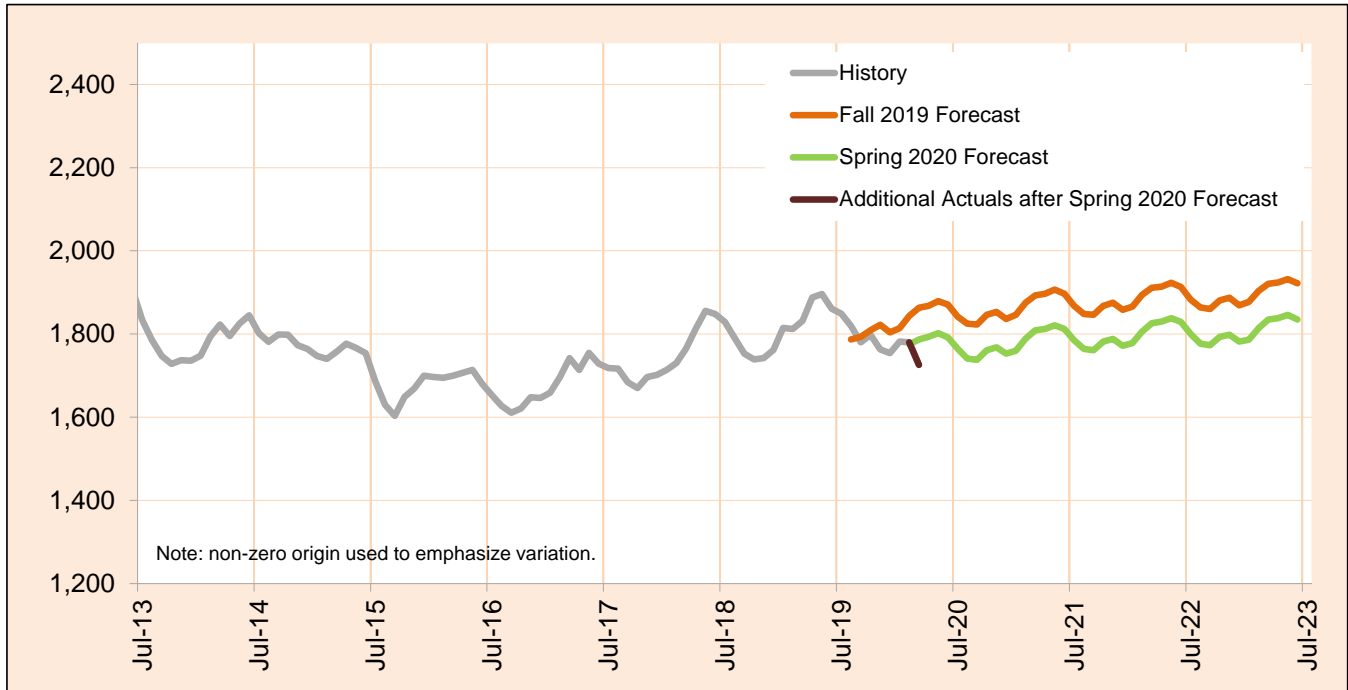
Month	Actual	Spring 2020 Forecast	Over/Under Forecast (Spring 2020)		Fall 2019 Forecast	Over/Under Forecast (Fall 2019)	
Aug-19	1,059	-	-	-	1,182	-123	-10.4%
Sep-19	1,097	-	-	-	1,253	-156	-12.5%
Oct-19	1,155	-	-	-	1,275	-120	-9.4%
Nov-19	1,121	-	-	-	1,313	-192	-14.6%
Dec-19	1,036	-	-	-	1,212	-176	-14.5%
Jan-20	1,109	-	-	-	1,232	-123	-10.0%
Feb-20	1,214	1,249	-35	-2.8%	1,330	-116	-8.7%
Mar-20	946	1,330	-384	-28.9%	1,353	-407	-30.1%
Apr-20	-	1,297	-	-	1,372	-	-
May-20	-	1,284	-	-	1,361	-	-
Jun-20	-	1,199	-	-	1,271	-	-
Jul-20	-	1,105	-	-	1,191	-	-

Monthly Caseload Forecast Variance Report
 Department of Human Services
 Vocational Rehabilitation

MAY 2020

Cognitive Impairments

Cognitive Impairments does not include those who had IDD services in 12 months prior to VR application date. PES not included.



Month	Actual	Spring 2020 Forecast	Over/Under Forecast (Spring 2020)		Fall 2019 Forecast	Over/Under Forecast (Fall 2019)	
Aug-19	1,819	-	-	-	1,787	32	1.8%
Sep-19	1,780	-	-	-	1,793	-13	-0.7%
Oct-19	1,798	-	-	-	1,809	-11	-0.6%
Nov-19	1,763	-	-	-	1,822	-59	-3.2%
Dec-19	1,754	-	-	-	1,804	-50	-2.8%
Jan-20	1,782	-	-	-	1,814	-32	-1.8%
Feb-20	1,780	1,775	5	0.3%	1,844	-64	-3.5%
Mar-20	1,726	1,787	-61	-3.4%	1,863	-137	-7.4%
Apr-20	-	1,793	-	-	1,868	-	-
May-20	-	1,802	-	-	1,879	-	-
Jun-20	-	1,792	-	-	1,871	-	-
Jul-20	-	1,765	-	-	1,842	-	-

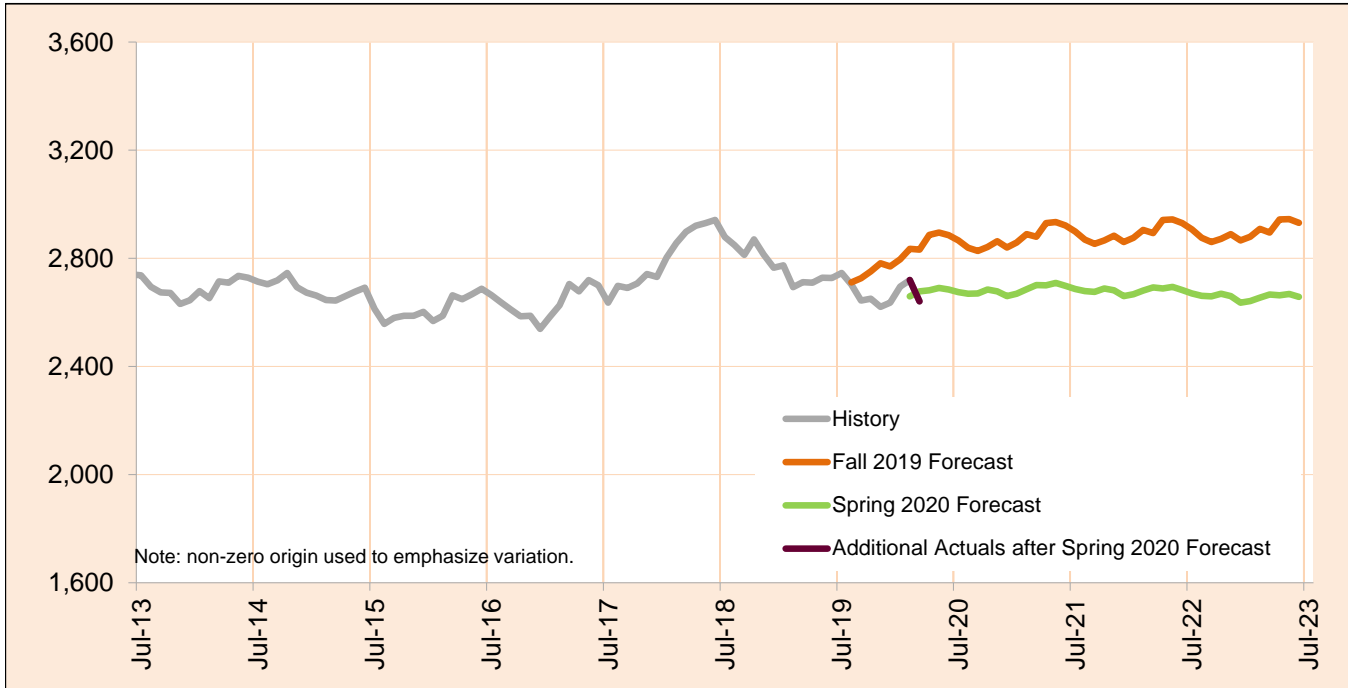
Caseload includes individuals with the following primary disability impairment sub-groups: Blindness; Other visual impairments; Deafness, communication visual; Deafness, communication auditory; Hearing loss, communication visual; Hearing loss, communication auditory; Other Hearing Impairments; Deaf-Blindness; and Communicative impairments. Except if counted in IDD in Prior 12 Months caseload.

Monthly Caseload Forecast Variance Report
 Department of Human Services
 Vocational Rehabilitation

MAY 2020

Psychosocial & Other Mental Impairments

Psychosocial & Other Mental Impairments does not include those who had IDD services in 12 months prior to VR application date. PES not included.



Month	Actual	Spring 2020 Forecast	Over/Under Forecast (Spring 2020)		Fall 2019 Forecast	Over/Under Forecast (Fall 2019)	
Aug-19	2,703	-	-	-	2,711	-8	-0.3%
Sep-19	2,644	-	-	-	2,726	-82	-3.0%
Oct-19	2,651	-	-	-	2,752	-101	-3.7%
Nov-19	2,621	-	-	-	2,782	-161	-5.8%
Dec-19	2,636	-	-	-	2,770	-134	-4.8%
Jan-20	2,695	-	-	-	2,796	-101	-3.6%
Feb-20	2,720	2,659	61	2.3%	2,835	-115	-4.1%
Mar-20	2,641	2,678	-37	-1.4%	2,832	-191	-6.7%
Apr-20	-	2,682	-	-	2,887	-	-
May-20	-	2,690	-	-	2,895	-	-
Jun-20	-	2,685	-	-	2,886	-	-
Jul-20	-	2,675	-	-	2,866	-	-

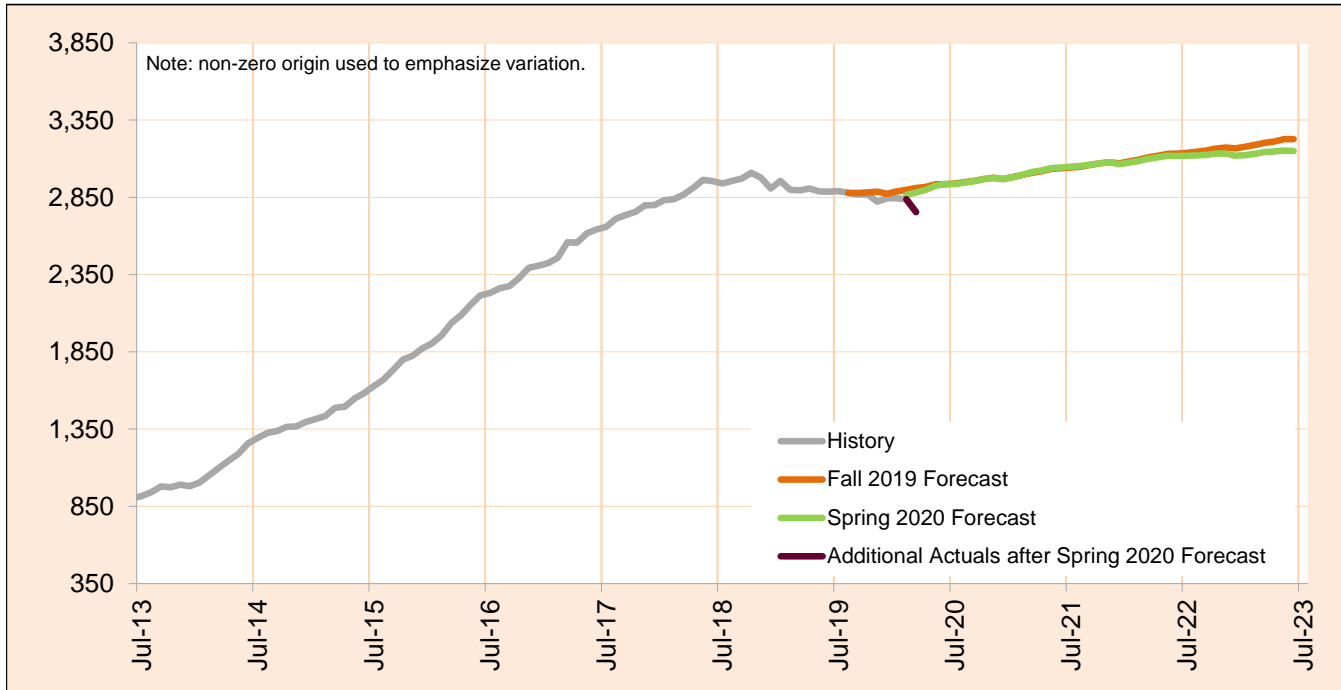
Caseload includes individuals with the following primary disability impairment sub-groups: Blindness; Other visual impairments; Deafness, communication visual; Deafness, communication auditory; Hearing loss, communication visual; Hearing loss, communication auditory; Other Hearing Impairments; Deaf-Blindness; and Communicative impairments. Except if counted in IDD in Prior 12 Months caseload.

Monthly Caseload Forecast Variance Report
 Department of Human Services
 Vocational Rehabilitation

MAY 2020

IDD in Prior 12 months

IDD in Prior 12 months includes those who had IDD services in 12 months prior to VR application date. PES not included.



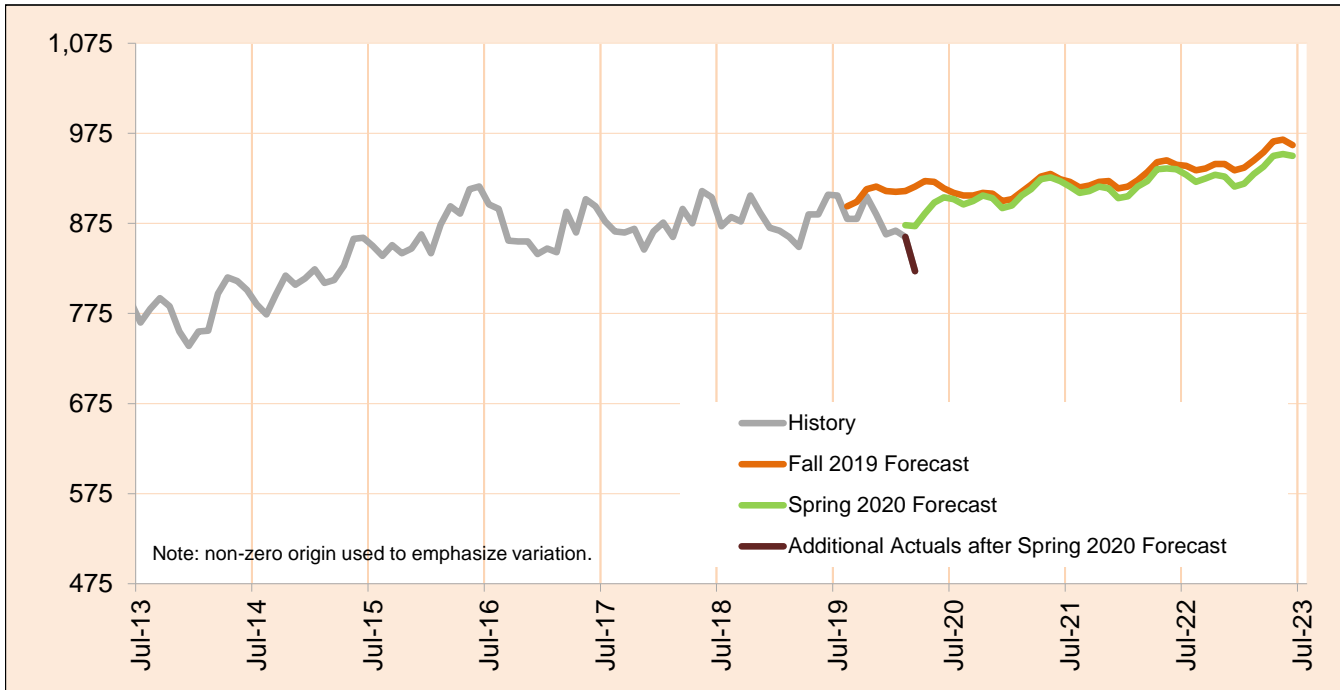
Month	Actual	Spring 2020 Forecast	Over/Under Forecast (Spring 2020)		Fall 2019 Forecast	Over/Under Forecast (Fall 2019)	
Aug-19	2,880	-	-	-	2,878	2	0.1%
Sep-19	2,868	-	-	-	2,879	-11	-0.4%
Oct-19	2,870	-	-	-	2,881	-11	-0.4%
Nov-19	2,823	-	-	-	2,887	-64	-2.2%
Dec-19	2,844	-	-	-	2,873	-29	-1.0%
Jan-20	2,844	-	-	-	2,888	-44	-1.5%
Feb-20	2,838	2,866	-28	-1.0%	2,899	-61	-2.1%
Mar-20	2,755	2,881	-126	-4.4%	2,910	-155	-5.3%
Apr-20	-	2,899	-	-	2,918	-	-
May-20	-	2,924	-	-	2,934	-	-
Jun-20	-	2,937	-	-	2,935	-	-
Jul-20	-	2,936	-	-	2,940	-	-

Monthly Caseload Forecast Variance Report
 Department of Human Services
 Vocational Rehabilitation

MAY 2020

Deafness/Blindness

Deafness/Blindness does not include those who had IDD services in 12 months prior to VR application date. PES not included.



Month	Actual	Spring 2020 Forecast	Over/Under Forecast (Spring 2020)		Fall 2019 Forecast	Over/Under Forecast (Fall 2019)	
Aug-19	880	-	-	-	894	-14	-1.6%
Sep-19	880	-	-	-	899	-19	-2.1%
Oct-19	905	-	-	-	913	-8	-0.9%
Nov-19	885	-	-	-	916	-31	-3.4%
Dec-19	863	-	-	-	911	-48	-5.3%
Jan-20	867	-	-	-	910	-43	-4.7%
Feb-20	860	873	-13	-1.5%	911	-51	-5.6%
Mar-20	822	872	-50	-5.7%	916	-94	-10.3%
Apr-20	-	886	-	-	922	-	-
May-20	-	898	-	-	921	-	-
Jun-20	-	904	-	-	914	-	-
Jul-20	-	902	-	-	909	-	-

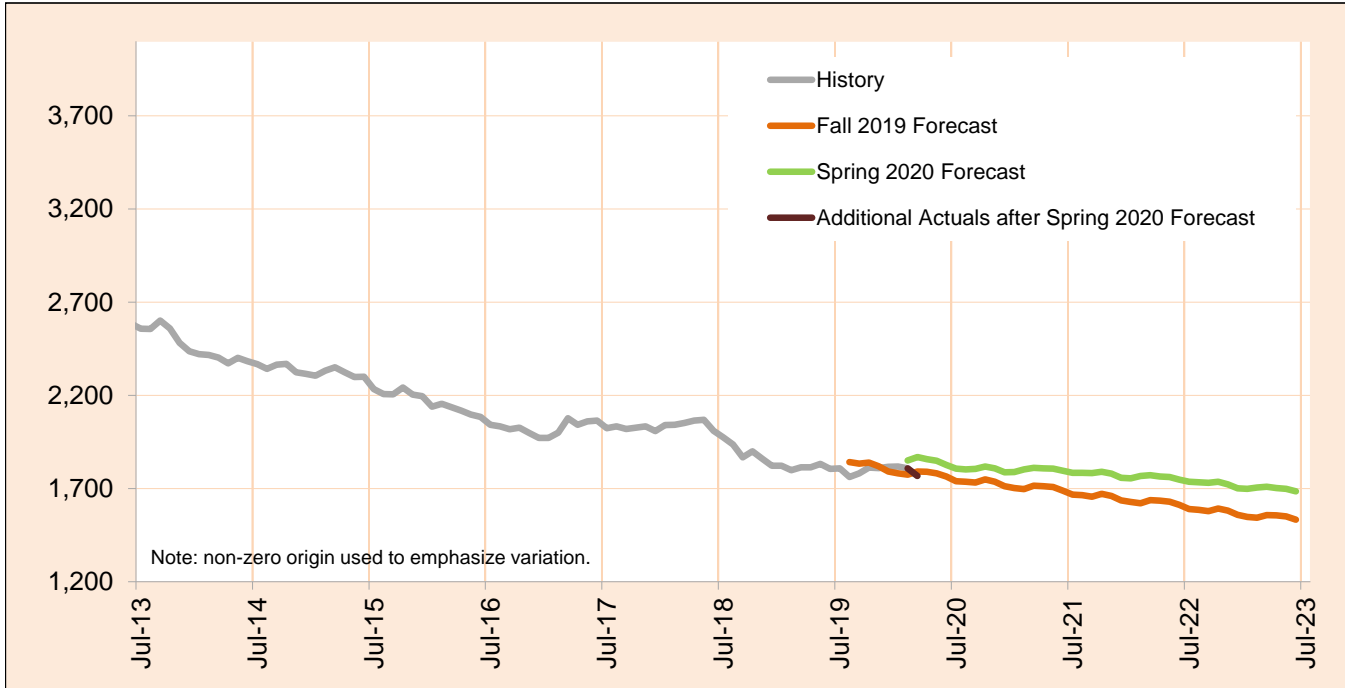
Caseload includes individuals with the following primary disability impairment sub-groups: Blindness; Other visual impairments; Deafness, communication visual; Deafness, communication auditory; Hearing loss, communication visual; Hearing loss, communication auditory; Other Hearing Impairments; Deaf-Blindness; and Communicative impairments. Except if counted in IDD in Prior 12 Months caseload.

Monthly Caseload Forecast Variance Report
 Department of Human Services
 Vocational Rehabilitation

MAY 2020

Physical Impairments

Physical Impairments does not include those who had IDD services in 12 months prior to VR application date. PES not included.



Month	Actual	Spring 2020 Forecast	Over/Under Forecast (Spring 2020)		Fall 2019 Forecast	Over/Under Forecast (Fall 2019)	
Aug-19	1,762	-	-	-	1,842	-80	-4.3%
Sep-19	1,781	-	-	-	1,834	-53	-2.9%
Oct-19	1,813	-	-	-	1,839	-26	-1.4%
Nov-19	1,810	-	-	-	1,819	-9	-0.5%
Dec-19	1,817	-	-	-	1,792	25	1.4%
Jan-20	1,818	-	-	-	1,781	37	2.1%
Feb-20	1,808	1,851	-43	-2.3%	1,775	33	1.9%
Mar-20	1,768	1,869	-101	-5.4%	1,792	-24	-1.3%
Apr-20	-	1,857	-	-	1,790	-	-
May-20	-	1,849	-	-	1,782	-	-
Jun-20	-	1,827	-	-	1,765	-	-
Jul-20	-	1,807	-	-	1,739	-	-

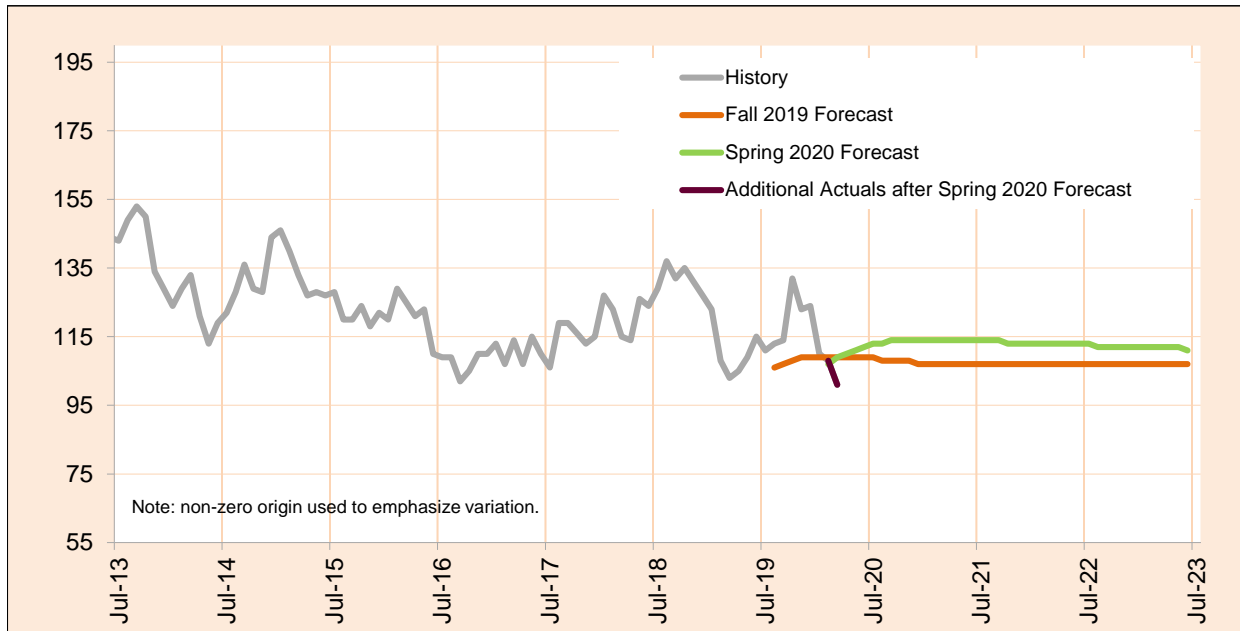
Caseload includes individuals with the following primary disability impairment sub-groups: Mobility; Manipulation; Mobility and manipulation; Other orthopedic impairments; Respiratory impairments; General physical debilitation; Other physical impairments not listed elsewhere; Dexterity Orthopedic/Neurological Impairments; and Other (no impairment or missing impairment field). Except if counted in IDD in Prior 12 Months caseload.

Monthly Caseload Forecast Variance Report
 Department of Human Services
 Vocational Rehabilitation

MAY 2020

Post Employment Services

Post Employment Services includes everyone who is employed and no longer in an active plan, but is receiving Vocational Rehabilitation services to help maintain employment.



Month	Actual	Spring 2020 Forecast	Over/Under Forecast (Spring 2020)		Fall 2019 Forecast	Over/Under Forecast (Fall 2019)	
Aug-19	113	-	-	-	106	7	6.6%
Sep-19	114	-	-	-	107	7	6.5%
Oct-19	132	-	-	-	108	24	22.2%
Nov-19	123	-	-	-	109	14	12.8%
Dec-19	124	-	-	-	109	15	13.8%
Jan-20	110	-	-	-	109	1	0.9%
Feb-20	108	107	1	0.9%	109	-1	-0.9%
Mar-20	101	109	-8	-7.3%	109	-8	-7.3%
Apr-20	-	110	-	-	109	-	-
May-20	-	111	-	-	109	-	-
Jun-20	-	112	-	-	109	-	-
Jul-20	-	113	-	-	109	-	-