

Monthly Caseload Forecast Variance Report  
 Department of Human Services  
 Vocational Rehabilitation

SEPTEMBER 2019

**Total Vocational Rehabilitation Forecast**

Month	Actual	Spring 2019 Forecast	Over/ Under Forecast	%
Feb-19	10,059	-	-	-
Mar-19	10,099	-	-	-
Apr-19	10,201	-	-	-
May-19	10,226	10,295	-69	-0.7%
Jun-19	10,184	10,266	-82	-0.8%
Jul-19	10,194	10,227	-33	-0.3%

**In Plan**

Month	Actual	Spring 2019 Forecast	Over/ Under Forecast	%
Feb-19	6,581	-	-	-
Mar-19	6,547	-	-	-
Apr-19	6,587	-	-	-
May-19	6,546	6,832	-286	-4.2%
Jun-19	6,558	6,847	-289	-4.2%
Jul-19	6,609	6,869	-260	-3.8%

**In Application**

Month	Actual	Spring 2019 Forecast	Over/ Under Forecast	%
Feb-19	1,199	-	-	-
Mar-19	1,203	-	-	-
Apr-19	1,319	-	-	-
May-19	1,290	1,171	119	10.2%
Jun-19	1,209	1,091	118	10.8%
Jul-19	1,146	1,019	127	12.5%

**In Eligibility**

Month	Actual	Spring 2019 Forecast	Over/ Under Forecast	%
Feb-19	2,174	-	-	-
Mar-19	2,249	-	-	-
Apr-19	2,194	-	-	-
May-19	2,285	2,177	108	5.0%
Jun-19	2,306	2,214	92	4.2%
Jul-19	2,334	2,225	109	4.9%

**Cognitive Impairments**

Month	Actual	Spring 2019 Forecast	Over/ Under Forecast	%
Feb-19	1,811	-	-	-
Mar-19	1,831	-	-	-
Apr-19	1,889	-	-	-
May-19	1,892	1,781	111	6.2%
Jun-19	1,854	1,779	75	4.2%
Jul-19	1,832	1,760	72	4.1%

**Psychosocial & Other Mental Impairments**

Month	Actual	Spring 2019 Forecast	Over/ Under Forecast	%
Feb-19	2,693	-	-	-
Mar-19	2,710	-	-	-
Apr-19	2,709	-	-	-
May-19	2,725	2,732	-7	-0.3%
Jun-19	2,722	2,720	2	0.1%
Jul-19	2,720	2,708	12	0.4%

**IDD in Prior 12 months**

Month	Actual	Spring 2019 Forecast	Over/ Under Forecast	%
Feb-19	2,893	-	-	-
Mar-19	2,889	-	-	-
Apr-19	2,899	-	-	-
May-19	2,881	2,923	-42	-1.4%
Jun-19	2,879	2,921	-42	-1.4%
Jul-19	2,881	2,921	-40	-1.4%

**Deafness/Blindness**

Month	Actual	Spring 2019 Forecast	Over/ Under Forecast	%
Feb-19	861	-	-	-
Mar-19	850	-	-	-
Apr-19	885	-	-	-
May-19	884	866	18	2.1%
Jun-19	906	859	47	5.5%
Jul-19	905	854	51	6.0%

Monthly Caseload Forecast Variance Report  
 Department of Human Services  
 Vocational Rehabilitation

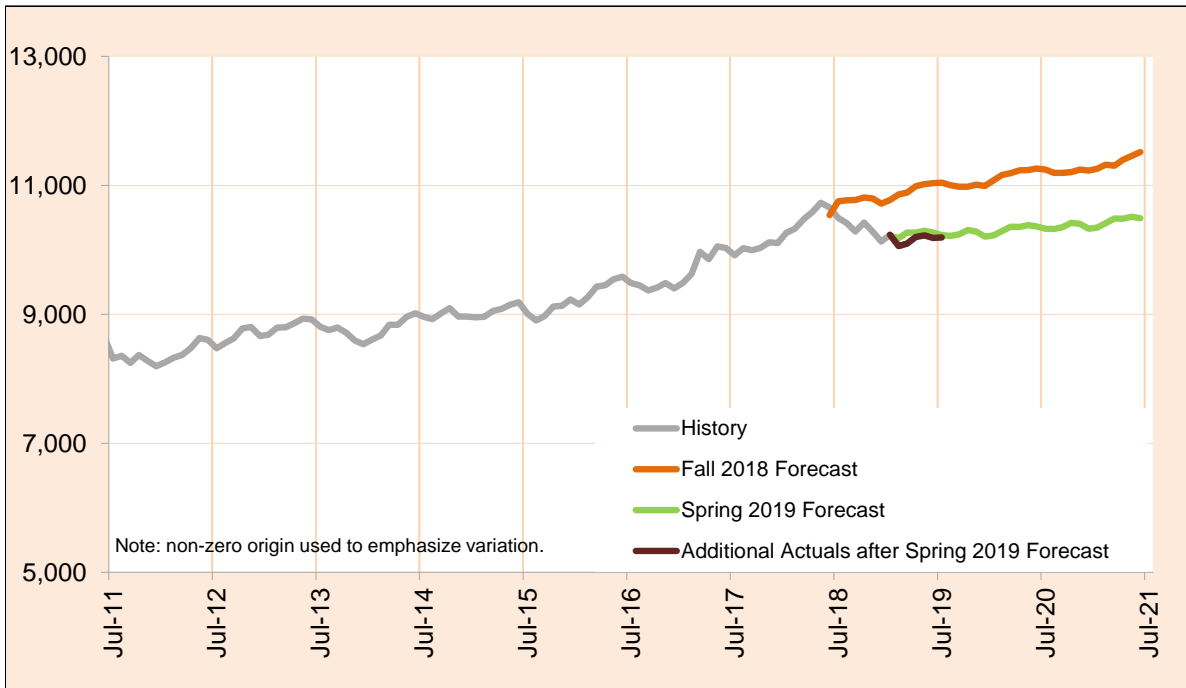
SEPTEMBER 2019

Physical Impairments					Post Employment Services				
Month	Actual	Spring 2019 Forecast	Over/ Under Forecast	%	Month	Actual	Spring 2019 Forecast	Over/ Under Forecast	%
Feb-19	1,801	-	-	-	Feb-19	105	-	-	-
Mar-19	1,819	-	-	-	Mar-19	100	-	-	-
Apr-19	1,819	-	-	-	Apr-19	101	-	-	-
May-19	1,844	1,860	-16	-0.9%	May-19	105	115	-10	-8.7%
Jun-19	1,823	1,852	-29	-1.6%	Jun-19	111	114	-3	-2.6%
Jul-19	1,856	1,845	11	0.6%	Jul-19	105	114	-9	-7.9%

SEPTEMBER 2019

**Total Vocational Rehabilitation (VR)**

Count of all clients who had an active VR episode at any time in the given month. VR helps individuals with physical and mental disabilities to obtain and retain employment that matches their skills, potential, and interest. The services are provided through local VR offices which partner with community resources and local providers.



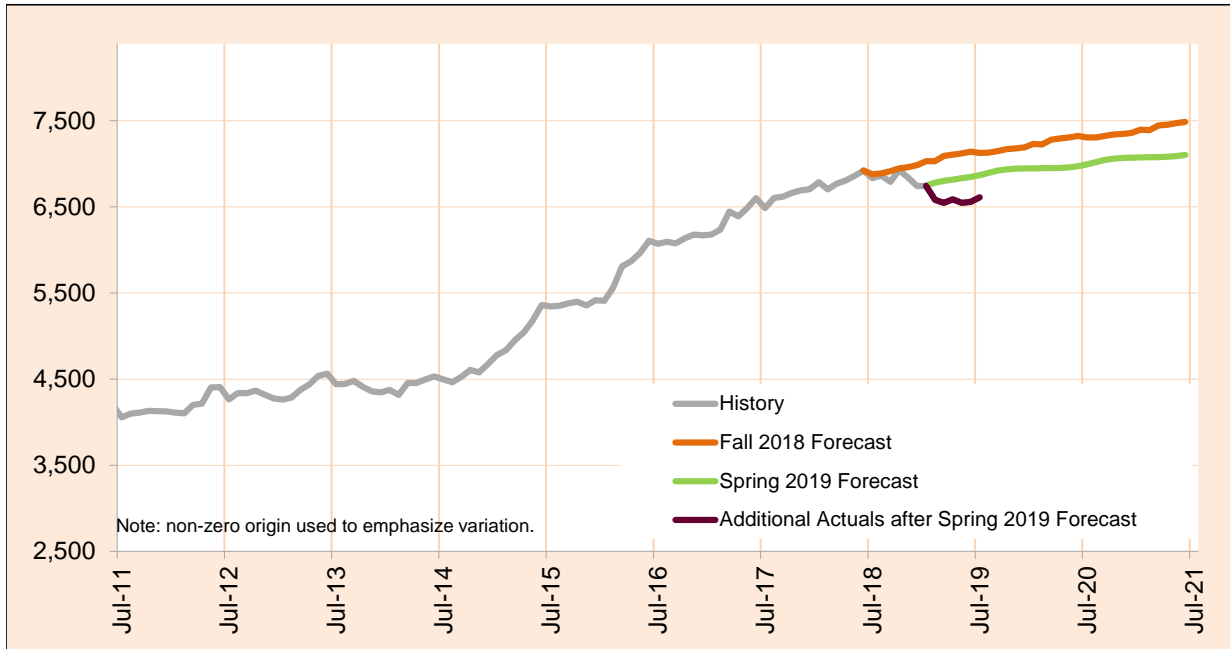
Month	Actual	Spring 2019 Forecast	Over/Under Forecast (Spring 2019)	Fall 2018 Forecast	Over/Under Forecast (Fall 2018)
Jul-18	10,494	-	-	10,752	-258
Aug-18	10,415	-	-	10,769	-354
Sep-18	10,282	-	-	10,774	-492
Oct-18	10,424	-	-	10,814	-390
Nov-18	10,281	-	-	10,797	-516
Dec-18	10,128	-	-	10,717	-589
Jan-19	10,234	10,222	12	10,774	-540
Feb-19	10,059	10,181	-122	10,859	-800
Mar-19	10,099	10,268	-169	10,887	-788
Apr-19	10,201	10,268	-67	10,985	-784
May-19	10,226	10,295	-69	11,017	-791
Jun-19	10,184	10,266	-82	11,033	-849
Jul-19	10,194	10,227	-33	11,042	-848

Monthly Caseload Forecast Variance Report  
 Department of Human Services  
 Vocational Rehabilitation

SEPTEMBER 2019

**In Plan**

In Plan includes everyone who has an active plan at any time in a given month.



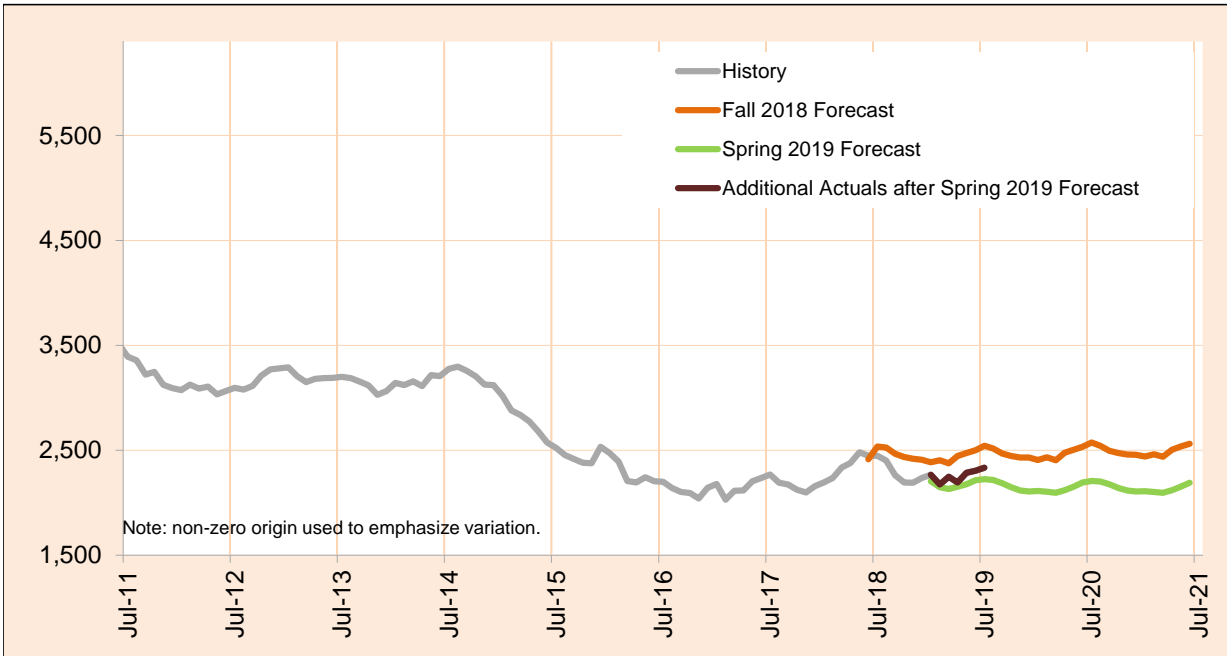
Month	Actual	Spring 2019 Forecast	Over/Under Forecast (Spring 2019)		Fall 2018 Forecast	Over/Under Forecast (Fall 2018)	
Jul-18	6,834	-	-	-	6,878	-44	-0.6%
Aug-18	6,861	-	-	-	6,887	-26	-0.4%
Sep-18	6,791	-	-	-	6,915	-124	-1.8%
Oct-18	6,926	-	-	-	6,945	-19	-0.3%
Nov-18	6,839	-	-	-	6,960	-121	-1.7%
Dec-18	6,740	-	-	-	6,984	-244	-3.5%
Jan-19	6,744	6,746	-2	0.0%	7,030	-286	-4.1%
Feb-19	6,581	6,782	-201	-3.0%	7,031	-450	-6.4%
Mar-19	6,547	6,802	-255	-3.7%	7,090	-543	-7.7%
Apr-19	6,587	6,817	-230	-3.4%	7,106	-519	-7.3%
May-19	6,546	6,832	-286	-4.2%	7,121	-575	-8.1%
Jun-19	6,558	6,847	-289	-4.2%	7,141	-583	-8.2%
Jul-19	6,609	6,869	-260	-3.8%	7,125	-516	-7.2%

Monthly Caseload Forecast Variance Report  
 Department of Human Services  
 Vocational Rehabilitation

SEPTEMBER 2019

**In Eligibility**

In Eligibility includes everyone who were in eligibility stage on the last day of the month or exited VR during the given month without advancing to the next stage. Typically, clients in this stage are either waiting for the final eligibility determination or are in the process of plan developing.



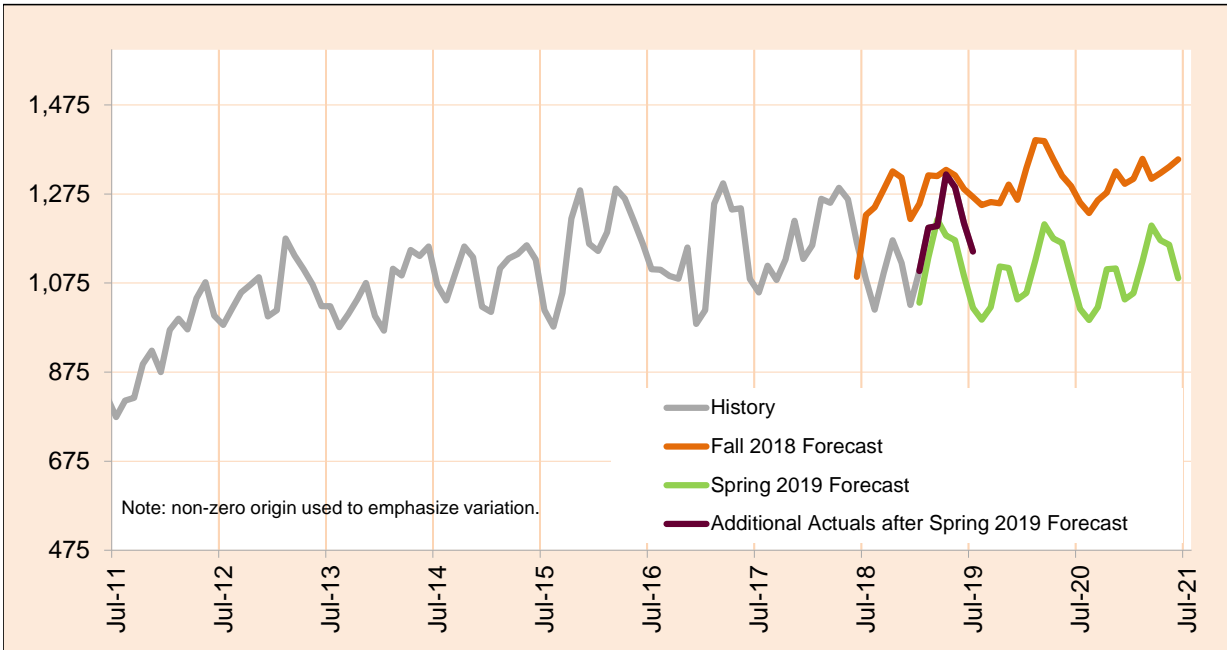
Month	Actual	Spring 2019 Forecast	Over/Under Forecast (Spring 2019)		Fall 2018 Forecast	Over/Under Forecast (Fall 2018)	
<b>Jul-18</b>	2,448	-	-	-	2,535	-87	-3.4%
<b>Aug-18</b>	2,402	-	-	-	2,527	-125	-4.9%
<b>Sep-18</b>	2,262	-	-	-	2,466	-204	-8.3%
<b>Oct-18</b>	2,192	-	-	-	2,436	-244	-10.0%
<b>Nov-18</b>	2,191	-	-	-	2,420	-229	-9.5%
<b>Dec-18</b>	2,235	-	-	-	2,409	-174	-7.2%
<b>Jan-19</b>	2,266	2,206	60	2.7%	2,386	-120	-5.0%
<b>Feb-19</b>	2,174	2,149	25	1.2%	2,406	-232	-9.6%
<b>Mar-19</b>	2,249	2,132	117	5.5%	2,376	-127	-5.3%
<b>Apr-19</b>	2,194	2,153	41	1.9%	2,445	-251	-10.3%
<b>May-19</b>	2,285	2,177	108	5.0%	2,473	-188	-7.6%
<b>Jun-19</b>	2,306	2,214	92	4.2%	2,500	-194	-7.8%
<b>Jul-19</b>	2,334	2,225	109	4.9%	2,543	-209	-8.2%

Monthly Caseload Forecast Variance Report  
 Department of Human Services  
 Vocational Rehabilitation

SEPTEMBER 2019

**In Application**

In Application includes everyone who were in application stage on the last day of the month or exited VR during the given month without advancing to the next stage. VR case is initiated by client submitting his/her application to VR. In this stage application is reviewed and eligibility assessed.



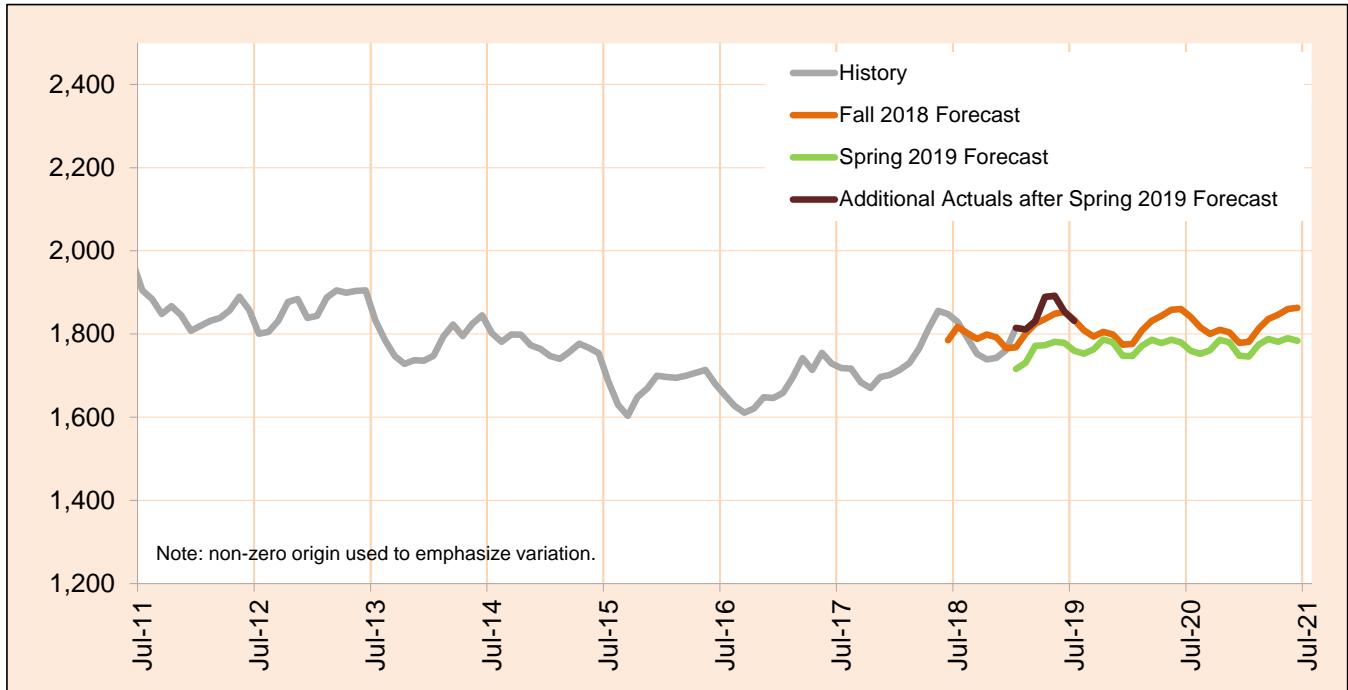
Month	Actual	Spring 2019 Forecast	Over/Under Forecast (Spring 2019)		Fall 2018 Forecast	Over/Under Forecast (Fall 2018)	
<b>Jul-18</b>	1,083	-	-	-	1,228	-145	-11.8%
<b>Aug-18</b>	1,015	-	-	-	1,245	-230	-18.5%
<b>Sep-18</b>	1,097	-	-	-	1,285	-188	-14.6%
<b>Oct-18</b>	1,171	-	-	-	1,326	-155	-11.7%
<b>Nov-18</b>	1,120	-	-	-	1,312	-192	-14.6%
<b>Dec-18</b>	1,026	-	-	-	1,219	-193	-15.8%
<b>Jan-19</b>	1,102	1,031	71	6.9%	1,253	-151	-12.1%
<b>Feb-19</b>	1,199	1,132	67	5.9%	1,317	-118	-9.0%
<b>Mar-19</b>	1,203	1,217	-14	-1.2%	1,315	-112	-8.5%
<b>Apr-19</b>	1,319	1,182	137	11.6%	1,329	-10	-0.8%
<b>May-19</b>	1,290	1,171	119	10.2%	1,317	-27	-2.1%
<b>Jun-19</b>	1,209	1,091	118	10.8%	1,286	-77	-6.0%
<b>Jul-19</b>	1,146	1,019	127	12.5%	1,268	-122	-9.6%

Monthly Caseload Forecast Variance Report  
 Department of Human Services  
 Vocational Rehabilitation

SEPTEMBER 2019

**Cognitive Impairments**

Cognitive Impairments does not include those who had IDD services in 12 months prior to VR application date.  
 PES not included.



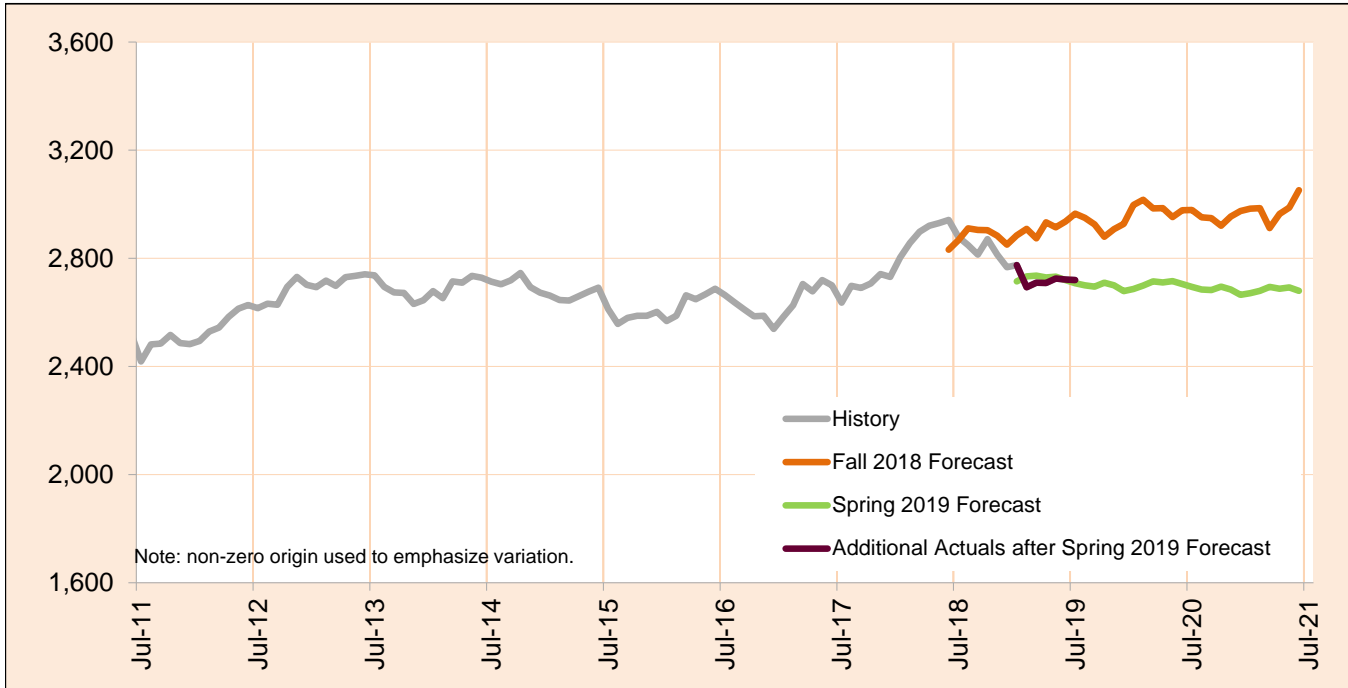
Month	Actual	Spring 2019 Forecast	Over/Under Forecast (Spring 2019)		Fall 2018 Forecast	Over/Under Forecast (Fall 2018)	
<b>Jul-18</b>	1,829	-	-	-	1,817	12	0.7%
<b>Aug-18</b>	1,791	-	-	-	1,802	-11	-0.6%
<b>Sep-18</b>	1,752	-	-	-	1,788	-36	-2.0%
<b>Oct-18</b>	1,739	-	-	-	1,799	-60	-3.3%
<b>Nov-18</b>	1,743	-	-	-	1,792	-49	-2.7%
<b>Dec-18</b>	1,762	-	-	-	1,766	-4	-0.2%
<b>Jan-19</b>	1,815	1,716	99	5.8%	1,768	47	2.7%
<b>Feb-19</b>	1,811	1,731	80	4.6%	1,801	10	0.6%
<b>Mar-19</b>	1,831	1,772	59	3.3%	1,825	6	0.3%
<b>Apr-19</b>	1,889	1,773	116	6.5%	1,836	53	2.9%
<b>May-19</b>	1,892	1,781	111	6.2%	1,849	43	2.3%
<b>Jun-19</b>	1,854	1,779	75	4.2%	1,853	1	0.1%
<b>Jul-19</b>	1,832	1,760	72	4.1%	1,834	-2	-0.1%

Caseload includes individuals with the following primary disability impairment sub-groups: Cognitive Impairments. Except if counted in IDD in Prior 12 Months caseload.

SEPTEMBER 2019

**Psychosocial & Other Mental Impairments**

Psychosocial & Other Mental Impairments does not include those who had IDD services in 12 months prior to VR application date. PES not included.



Month	Actual	Spring 2019 Forecast	Over/Under Forecast (Spring 2019)		Fall 2018 Forecast	Over/Under Forecast (Fall 2018)	
<b>Jul-18</b>	2,879	-	-	-	2,867	12	0.4%
<b>Aug-18</b>	2,849	-	-	-	2,911	-62	-2.1%
<b>Sep-18</b>	2,814	-	-	-	2,905	-91	-3.1%
<b>Oct-18</b>	2,871	-	-	-	2,904	-33	-1.1%
<b>Nov-18</b>	2,814	-	-	-	2,884	-70	-2.4%
<b>Dec-18</b>	2,767	-	-	-	2,851	-84	-2.9%
<b>Jan-19</b>	2,775	2,715	60	2.2%	2,885	-110	-3.8%
<b>Feb-19</b>	2,693	2,733	-40	-1.5%	2,909	-216	-7.4%
<b>Mar-19</b>	2,710	2,736	-26	-1.0%	2,874	-164	-5.7%
<b>Apr-19</b>	2,709	2,729	-20	-0.7%	2,933	-224	-7.6%
<b>May-19</b>	2,725	2,732	-7	-0.3%	2,915	-190	-6.5%
<b>Jun-19</b>	2,722	2,720	2	0.1%	2,936	-214	-7.3%
<b>Jul-19</b>	2,720	2,708	12	0.4%	2,965	-245	-8.3%

Caseload includes individuals with the following primary disability impairment sub-groups: Psychosocial impairments, Other mental impairments. Except if counted in IDD in Prior 12 Months caseload.

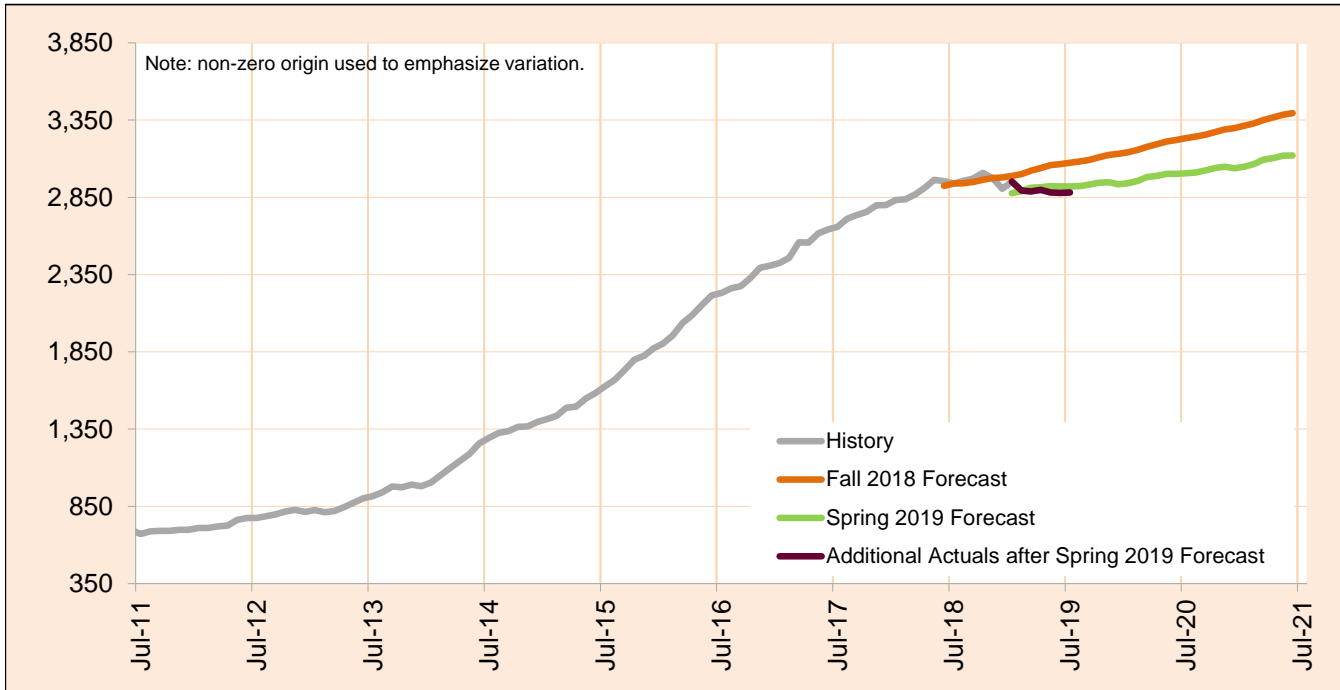


Monthly Caseload Forecast Variance Report  
 Department of Human Services  
 Vocational Rehabilitation

SEPTEMBER 2019

**IDD in Prior 12 months**

IDD in Prior 12 months includes those who had IDD services in 12 months prior to VR application date. PES not included.



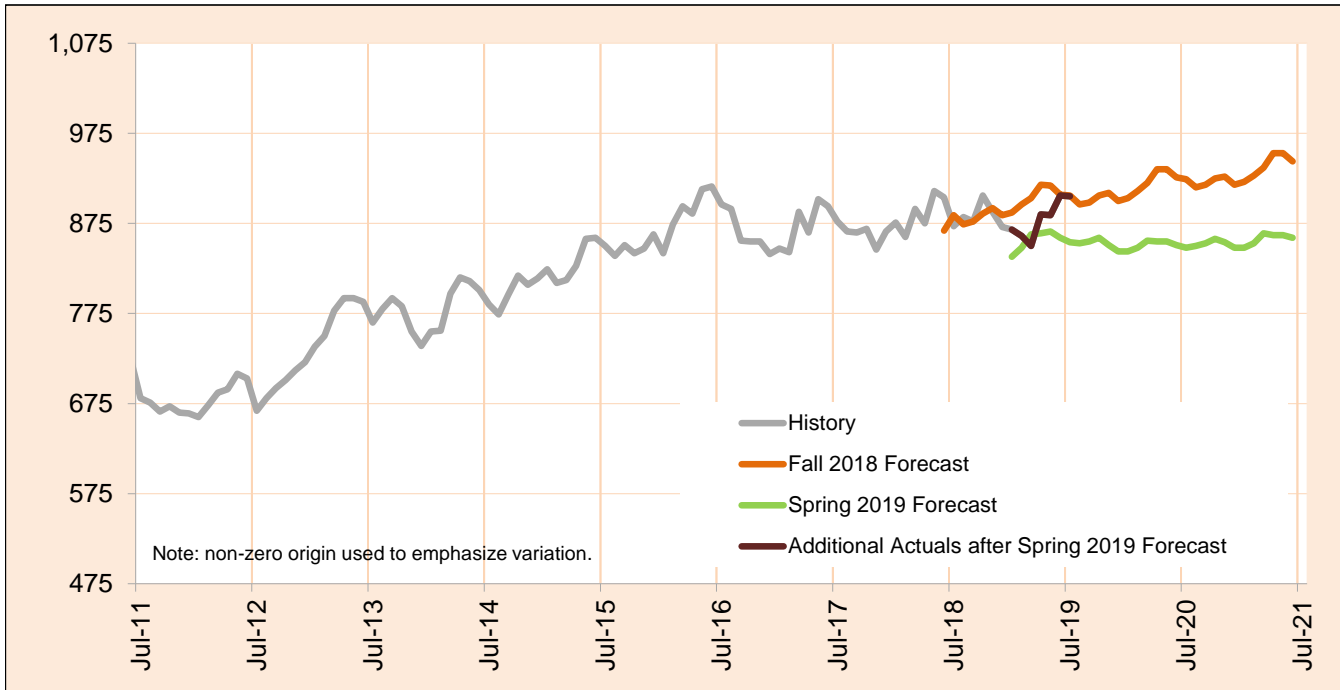
Month	Actual	Spring 2019 Forecast	Over/Under Forecast (Spring 2019)		Fall 2018 Forecast	Over/Under Forecast (Fall 2018)	
<b>Jul-18</b>	2,940	-	-	-	2,939	1	0.0%
<b>Aug-18</b>	2,957	-	-	-	2,941	16	0.5%
<b>Sep-18</b>	2,971	-	-	-	2,949	22	0.7%
<b>Oct-18</b>	3,008	-	-	-	2,963	45	1.5%
<b>Nov-18</b>	2,976	-	-	-	2,975	1	0.0%
<b>Dec-18</b>	2,905	-	-	-	2,978	-73	-2.5%
<b>Jan-19</b>	2,952	2,877	75	2.6%	2,988	-36	-1.2%
<b>Feb-19</b>	2,893	2,890	3	0.1%	3,000	-107	-3.6%
<b>Mar-19</b>	2,889	2,912	-23	-0.8%	3,022	-133	-4.4%
<b>Apr-19</b>	2,899	2,916	-17	-0.6%	3,039	-140	-4.6%
<b>May-19</b>	2,881	2,923	-42	-1.4%	3,058	-177	-5.8%
<b>Jun-19</b>	2,879	2,921	-42	-1.4%	3,066	-187	-6.1%
<b>Jul-19</b>	2,881	2,921	-40	-1.4%	3,073	-192	-6.2%

Monthly Caseload Forecast Variance Report  
 Department of Human Services  
 Vocational Rehabilitation

SEPTEMBER 2019

**Deafness/Blindness**

Deafness/Blindness does not include those who had IDD services in 12 months prior to VR application date. PES not included.



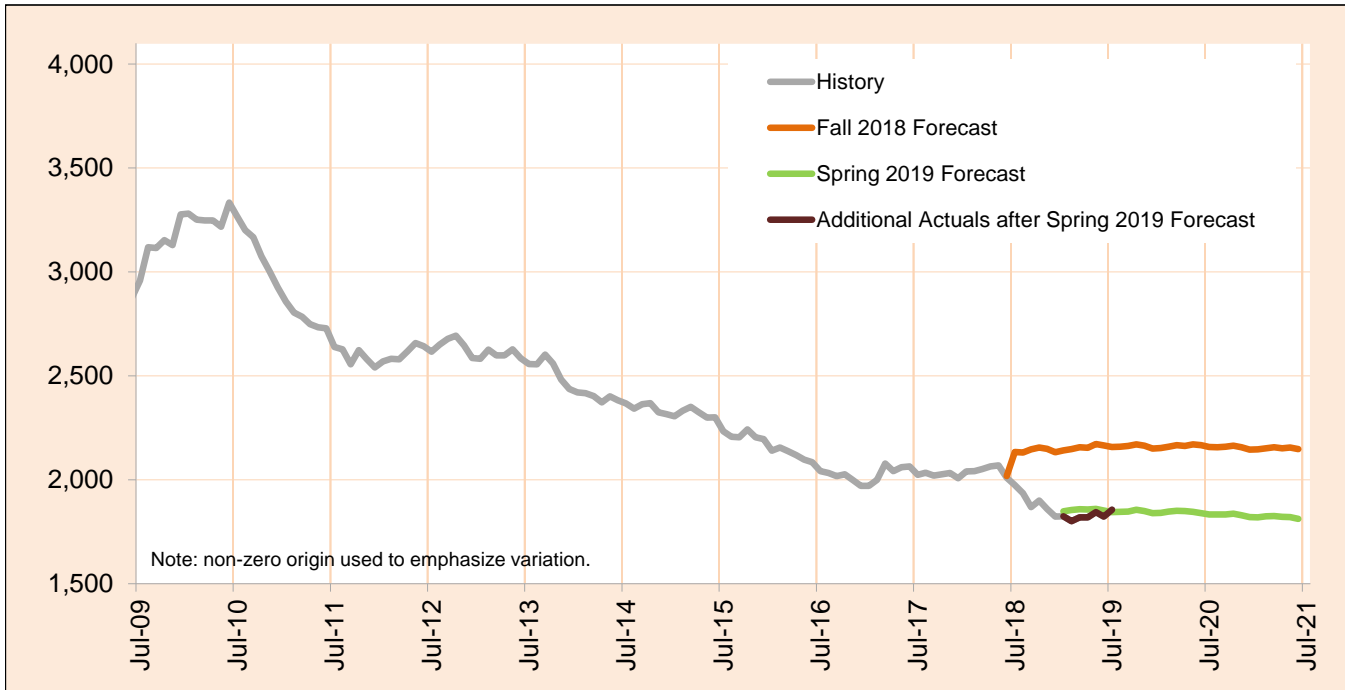
Month	Actual	Spring 2019 Forecast	Over/Under Forecast (Spring 2019)		Fall 2018 Forecast	Over/Under Forecast (Fall 2018)	
<b>Jul-18</b>	872	-	-	-	884	-12	-1.4%
<b>Aug-18</b>	882	-	-	-	874	8	0.9%
<b>Sep-18</b>	877	-	-	-	877	0	0.0%
<b>Oct-18</b>	906	-	-	-	886	20	2.3%
<b>Nov-18</b>	888	-	-	-	892	-4	-0.4%
<b>Dec-18</b>	871	-	-	-	884	-13	-1.5%
<b>Jan-19</b>	868	838	30	3.6%	887	-19	-2.1%
<b>Feb-19</b>	861	848	13	1.5%	896	-35	-3.9%
<b>Mar-19</b>	850	863	-13	-1.5%	903	-53	-5.9%
<b>Apr-19</b>	885	864	21	2.4%	918	-33	-3.6%
<b>May-19</b>	884	866	18	2.1%	917	-33	-3.6%
<b>Jun-19</b>	906	859	47	5.5%	907	-1	-0.1%
<b>Jul-19</b>	905	854	51	6.0%	906	-1	-0.1%

Caseload includes individuals with the following primary disability impairment sub-groups: Blindness; Other visual impairments; Deafness, communication visual; Deafness, communication auditory; Hearing loss, communication visual; Hearing loss, communication auditory; Other Hearing Impairments; Deaf-Blindness; and Communicative impairments. Except if counted in IDD in Prior 12 Months caseload.

SEPTEMBER 2019

**Physical Impairments**

Physical Impairments does not include those who had IDD services in 12 months prior to VR application date. PES not included.



Month	Actual	Spring 2019 Forecast	Over/Under Forecast (Spring 2019)	Fall 2018 Forecast	Over/Under Forecast (Fall 2018)
<b>Jul-18</b>	1,974	-	-	2,134	-160 -7.5%
<b>Aug-18</b>	1,936	-	-	2,131	-195 -9.2%
<b>Sep-18</b>	1,868	-	-	2,147	-279 -13.0%
<b>Oct-18</b>	1,900	-	-	2,155	-255 -11.8%
<b>Nov-18</b>	1,860	-	-	2,149	-289 -13.4%
<b>Dec-18</b>	1,823	-	-	2,133	-310 -14.5%
<b>Jan-19</b>	1,824	1,848	-24 -1.3%	2,141	-317 -14.8%
<b>Feb-19</b>	1,801	1,855	-54 -2.9%	2,148	-347 -16.2%
<b>Mar-19</b>	1,819	1,859	-40 -2.2%	2,157	-338 -15.7%
<b>Apr-19</b>	1,819	1,857	-38 -2.0%	2,154	-335 -15.6%
<b>May-19</b>	1,844	1,860	-16 -0.9%	2,172	-328 -15.1%
<b>Jun-19</b>	1,823	1,852	-29 -1.6%	2,165	-342 -15.8%
<b>Jul-19</b>	1,856	1,845	11 0.6%	2,158	-302 -14.0%

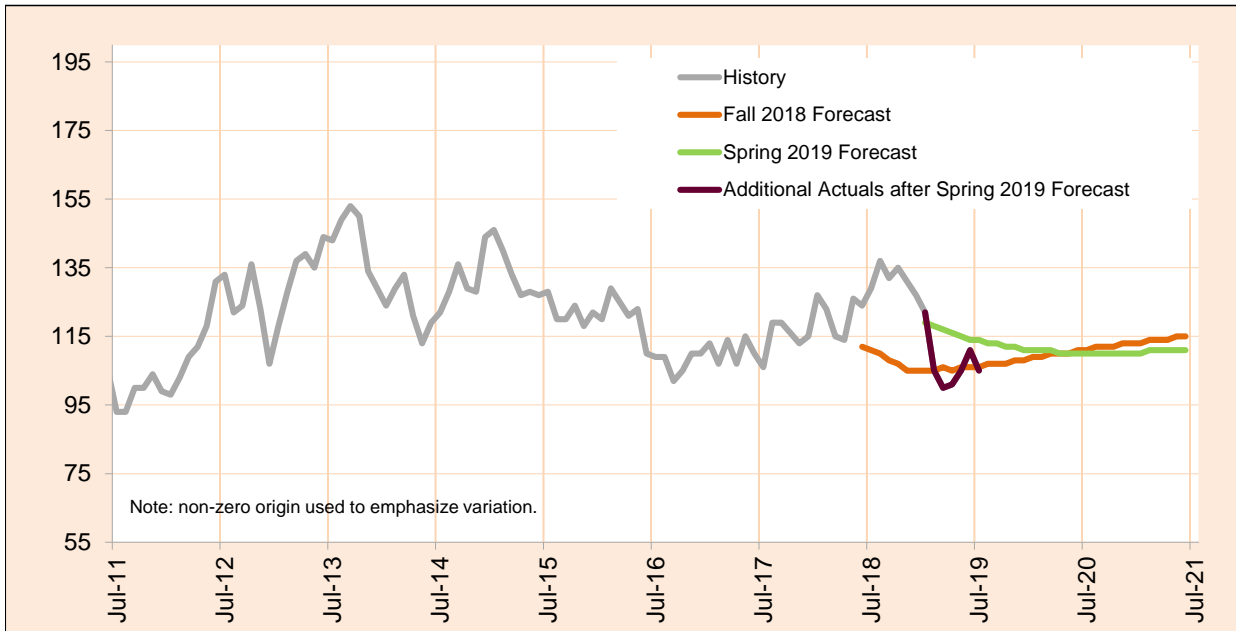
Caseload includes individuals with the following primary disability impairment sub-groups: Mobility; Manipulation; Mobility and manipulation; Other orthopedic impairments; Respiratory impairments; General physical debilitation; Other physical impairments not listed elsewhere; Dexterity Orthopedic/Neurological Impairments; and Other (no impairment or missing impairment field). Except if counted in IDD in Prior 12 Months caseload.

Monthly Caseload Forecast Variance Report  
 Department of Human Services  
 Vocational Rehabilitation

SEPTEMBER 2019

**Post Employment Services**

Post Employment Services includes everyone who is employed and no longer in an active plan, but is receiving Vocational Rehabilitation services to help maintain employment.



Month	Actual	Spring 2019 Forecast	Over/Under Forecast (Spring 2019)		Fall 2018 Forecast	Over/Under Forecast (Fall 2018)	
<b>Jul-18</b>	129	-	-	-	111	18	16.2%
<b>Aug-18</b>	137	-	-	-	110	27	24.5%
<b>Sep-18</b>	132	-	-	-	108	24	22.2%
<b>Oct-18</b>	135	-	-	-	107	28	26.2%
<b>Nov-18</b>	131	-	-	-	105	26	24.8%
<b>Dec-18</b>	127	-	-	-	105	22	21.0%
<b>Jan-19</b>	122	119	3	2.5%	105	17	16.2%
<b>Feb-19</b>	105	118	-13	-11.0%	105	0	0.0%
<b>Mar-19</b>	100	117	-17	-14.5%	106	-6	-5.7%
<b>Apr-19</b>	101	116	-15	-12.9%	105	-4	-3.8%
<b>May-19</b>	105	115	-10	-8.7%	106	-1	-0.9%
<b>Jun-19</b>	111	114	-3	-2.6%	106	5	4.7%
<b>Jul-19</b>	105	114	-9	-7.9%	106	-1	-0.9%