

**T  
U  
M  
B  
L  
E  
W  
E  
E  
D**



**MAY 2026**

**VOL. 26**

**ISSUE 5**

# IMPORTANT DATES TO REMEMBER

## Upcoming PSC & TRAC Events

Pay Dates: , 5/7, 6/4, 7/9, 8/6, 9/10, 10/8, 11/5, 12/10

- ❖ **MAY 14<sup>TH</sup> A NIGHT AT THE THEATRE**
- ❖ **MAY 17<sup>TH</sup> SPADES TOURNAMENT**
- ❖ **MAY KFC FUNDRAISER Delivery 27<sup>TH</sup>-29<sup>TH</sup>**
- ❖ **MAY PGA 2K GOLF TOURNAMENT DATE TBD**

## *Celebrating This Month!!!*

- **ALS Awareness Month**
- **Asian American and Pacific Islander Heritage Month**
- **Borderline Personality Disorder Awareness Month**
- **Brain Tumor Awareness Month**
- **Celiac Awareness Month**



# Words to **INSPIRE** from Garrett & Cambell



“

Choose a job you love, and  
you will never have to work a  
day in your life.

—  
CONFUCIUS

[SPACIOUSQUOTES.COM](http://SPACIOUSQUOTES.COM)

**"Growth takes place outside of  
your comfort zone."**

— Dawn Staley, Olympics Gold medalist.

"Your work is going to fill a large  
part of your life, and the only  
way to be truly satisfied is to do  
what you believe is great work."  
— Steve Jobs



# May 2026 Movie Schedule

Week 1	Run Time	May 1 <sup>st</sup> – May 7 <sup>th</sup>	Approximate Start Time	Restart Time
<b>CH. 14</b> New Release	1:49	The Fire Inside	FRI 2:00 PM	6:00PM
	1:47	Predator Badlands	1:30 PM	6:00 PM
<b>CH. 16</b> Throwback	2:34	Ray Donovan Season 1, Disc 3 ( 3 eps )	FRI 2:00 PM	6:00PM
	2:40	Ray Donovan Season 1, Disc 4 ( 3 eps )		
	2:08	The Little Things	1:30 PM	6:00 PM
<b>CH. 17</b> New Series	1:52	Nurse Jackie Season 4, Disc 2 ( 4 eps )	FRI 2:00 PM	6:00PM
	1:52	Nurse Jackie Season 4, Disc 3 ( 2 eps )		
	3:25	Pennyworth Season 2, Disc 2 ( 4 eps )	1:30 PM	6:00 PM
Week 2	Run Time	May 8 <sup>th</sup> – May 14 <sup>th</sup>		
<b>CH. 14</b> New Release	1:31	SISU	FRI 2:00 PM	6:00 PM
	1:29	SISU : Road to Revenge	1:30 PM	6:00PM
<b>CH. 16</b> Throwback	3:40	Ray Donovan Season 2, Disc1 ( 4 eps )	FRI 2:00 PM	6:00 PM
	3:25	Ray Donovan Season 2, Disc 2 ( 4 eps )		
	2:15	A Piece of The Action	1:30 PM	6:00PM
<b>CH. 17</b> New Series	1:52	Nurse Jackie Season 5, Disc 1( 4 eps )	FRI 2:00 PM	6:00 PM
	1:52	Nurse Jackie Season 5, Disc 2 ( 4 eps )		
	2:35	Pennyworth Season 2, Disc 3 ( 3 eps )	1:30 PM	6:00PM
Week 3	Run Time	May 15 <sup>th</sup> – May 21 <sup>st</sup>		
<b>CH. 14</b> New Release	1:55	Now You See Me	FRI 2:00 PM	6:00PM
	2:09	Now You See Me 2	1:30 PM	6:00 PM
<b>CH. 16</b> Throwback	3:29	Ray Donovan Season 2, Disc 3 ( 4 eps )	FRI 2:00 PM	6:00PM
	3:30	Ray Donovan Season 3, Disc 1 ( 4 eps )		
	1:44	Uptown Saturday Night	1:30 PM	6:00 PM
<b>CH. 17</b> New Series	1:52	Nurse Jackie Season 5, Disc 3 ( 4 eps )	FRI 2:00 PM	6:00PM
	1:52	Nurse Jackie Season 6, Disc 1 ( 4 eps )		
	3:24	Pennyworth Season 3, Disc 1 ( 4 eps )	1:30 PM	6:00 PM
Week 4	Run Time	May 22 <sup>nd</sup> – May 28 <sup>th</sup>		
<b>CH. 14</b> New Release	1:53	Now You See Me Now You Don't	FRI 2:00 PM	6:00 PM
	2:11	The Housemaid	1:30 PM	6:00PM
<b>CH. 16</b> Throwback	3:31	Ray Donovan Season 3, Disc 2 ( 4 eps )	FRI 2:00 PM	6:00 PM
	2:48	Ray Donovan Season 3, Disc 3 ( 3 eps )		
	1:26	Heavy Metal	1:30 PM	6:00PM
<b>CH. 17</b> New Series	1:52	Nurse Jackie Season 6, Disc 2 ( 4 eps )	FRI 2:00 PM	6:00 PM
	1:52	Nurse Jackie Season 6, Disc 3 ( 4 eps )		
	2:23	Pennyworth Season 3, Disc 2 ( 3 eps )	1:30 PM	6:00PM
Week 5	Run Time	May 29 <sup>th</sup> – June 4 <sup>th</sup>		
<b>CH. 14</b> New Release	1:31	The Strangers: Chapter 1	FRI 2:00 PM	6:00 PM
	1:38	The Strangers: Chapter 2	1:30 PM	6:00PM
<b>CH. 16</b> Throwback	2:45	Ray Donovan Season 3, Disc 4 ( 1 eps )	FRI 2:00 PM	6:00 PM
	2:38	Ray Donovan Season 4, Disc 1 ( 4 eps )		
	1:28	Heavy Metal 2000	1:30 PM	6:00PM
<b>CH. 17</b> New Series	1:52	Nurse Jackie Season 7, Disc 1 ( 4 eps )	FRI 2:00 PM	6:00 PM
	1:52	Nurse Jackie Season 7, Disc 2 ( 4 eps )		
	2:14	Pennyworth Season 3, Disc 3 ( 4 eps )	1:30 PM	6:00PM

CH. 17 is strictly for in-cell viewing only. Channel 16 may be viewed in the dayroom only if a movie is being played; TV series are not to be shown in the dayroom. Scheduling TV series on the dayroom televisions will result in disciplinary action (NO EXCEPTIONS!)

**ATTENTION: Due to movie availability, we will show a throwback film, if we cannot purchase new releases.**



## GREEN'S GAME GUIDE

GREEN'S GAME GUIDE

Hello once again my fellow Tumbleweeders! Thank you for joining me this month for my latest TRAC video game reviews. This month we have WWE 2K25! So, get ready for some high flying,

over the top-rope action!

### My pros and cons for WWE 2K25 (Available May 1st)



The first thing I want to touch on is for those who are already familiar with WWE 2K23:

- **Chain wrestling** has been added and is a really neat in match mini game that pays homage to the opening back and forth action we see in most matches.
- New match types like **Underground**, **Bloodline Rules** (with called for run-ins), and long-requested **intergender matches** (no more gender restrictions), **special guest refs** and honestly many more.
- Additions like barricade diving, updated blood mechanics, new weapons, and better control overall.
- Showcase mode focuses on the Bloodline and feels way different than the John Cena version.
- **MyGM** has been updated to give more options and now has inter-brand PLE's where you share the card with the other promotions.

Now for those of you that have never played any 2K WWE games;

There's a **TON** of content:

- **Showcase Mode**: Focused on **The Bloodline** / Anoa'i family story (Roman Reigns) with cinematic elements and alternate paths.
- **MyRISE**: Updated career mode with more choices.
- **MyGM**: Offline 1-4 players where you compete to have your brand rise to the top of the ratings.
- **Universe Mode**: Enhanced with promo cutscenes, branching outcomes, etc.
- **MyFACTION**: still only available online

- The sheer volume of modes, wrestlers, and customization keeps it replayable for hundreds of hours.
- **👍 Pros**
  - Excellent core wrestling gameplay that feels polished and fun.
  - Massive amount of content and modes.
  - Welcoming additions like intergender wrestling and Bloodline Showcase.
  - Great presentation with updated entrances, animations, and crowd energy.
  - Strong for both casual fans and dedicated players.
- **👎 Cons**
  - Some modes feel like "more of the same" rather than revolutionary with incremental updates.
  - Occasional technical or balance issues, and the learning curve can frustrate newcomers.

## Overall Scores and Verdict

Critics generally rate it around 8/10 (Metacritic in the low-to-mid 80s, described as "Generally Favorable"). It's frequently called one of the best WWE 2K entries in years—I'd say it's the best since the SmackDown vs. Raw era or the strongest in the modern 2K run. Matches feel satisfying and authentic. The controls are easy to learn yet deep enough for hardcore players, though some reviews I've seen mention a steeper learning curve for new mechanics or Showcase objectives. I don't personally agree with this point of view. If you enjoyed WWE 2K23 or earlier entries and want more wrestling action with new match types and a huge roster, it's more than worth checking out down here at TRAC! Tune in next month for more in depth reviews and highlights.





Date: April 9, 2026  
To: All ODOC Adults-in Custody  
From: Offender Information and Sentence Computation Unit  
Subject: Policy Review: Time-Served Credit Calculation Under ORS 137.370(4)

The Oregon Supreme Court's decision in *Torres-Lopez v. Fahrion* has significantly changed how the Oregon Department of Corrections (ODOC) calculates Time Served Credit (TSC) under Oregon Revised Statute (ORS) 137.370(4).

In July 2025, the Offender Information and Sentence Computation (OISC) unit began reviewing sentences imposed on or after August 1, 2015, to determine potential impacts from *Torres-Lopez v. Fahrion*. OISC worked closely with the Oregon Department of Justice (DOJ) to refine and establish DOC's policies regarding TSC calculations, ensuring they align with the Court's intent.

#### Key Points About This Review

- **Prioritization:** Reviews will be prioritized based on projected release dates.
- **Eligibility:** Only sentences imposed on or after August 1, 2015, will be reviewed.
- **Re-Review:** Sentences reviewed under former TSC policies will be re-reviewed to ensure compliance with current policies.
- **Notification:** If an Adult in Custody (AIC)'s projected release date changes, the AIC will be notified through written communication delivered via institutional mail to the AIC's housing unit. The notice will include:
  - Updated projected release date
  - An explanation of the change

#### Questions about sentence calculations?

AICs may submit an AIC Communication Form (CD214) to their Prison Term Analyst (PTA). The PTA can provide a detailed breakdown of the sentence calculation, explain the application of TSC, and address any other questions related to the sentence.

If an AIC believes they are entitled to additional TSC under ORS 137.370(4) or that their calculation is incorrect, options include:

- Working with legal counsel to obtain a corrected judgment
- Consult with a Legal Assistant in the facility's Legal Library
- Write to the sentencing court for the affected case(s)

Due to the volume and complexity of reviews, this process will take time, and not all reviews will result in a change to projected release dates.



Fecha: 9 de abril de 2026

Para: Todas las personas bajo custodia de ODOC

De: Unidad de Información del Ofensor y Cómputo de Sentencias

Asunto: Revisión de política: cálculo de crédito por tiempo cumplido según ORS 137.370(4)

La decisión de la Corte Suprema de Oregon en *Torres-Lopez v. Fahrion* ha cambiado de manera importante cómo el Departamento de Correcciones de Oregon (ODOC) calcula el crédito por tiempo cumplido (TSC) bajo la ley ORS 137.370(4).

En julio de 2025, la Unidad de Información del Ofensor y Cómputo de Sentencias (OISC) comenzó a revisar las sentencias impuestas a partir del 1 de agosto de 2015 para ver cómo podrían verse afectadas por este caso. OISC trabajó de cerca con el Departamento de Justicia de Oregon (DOJ) para ajustar y establecer las políticas del DOC sobre el cálculo del TSC, asegurando que estén alineadas con la intención de la Corte.

#### Puntos clave sobre esta revisión:

- **Prioridad:** Las revisiones se harán primero según las fechas proyectadas de liberación.
- **Elegibilidad:** Solo se revisarán sentencias impuestas a partir del 1 de agosto de 2015.
- **Revisión nuevamente:** Las sentencias que ya se revisaron bajo políticas anteriores de TSC se volverán a revisar para asegurar que cumplan con las políticas actuales.
- **Notificación:** Si cambia la fecha proyectada de liberación de una persona bajo custodia (AIC), se le notificará por escrito a través del correo institucional en su unidad de vivienda. El aviso incluirá:
  - La nueva fecha proyectada de liberación
  - Una explicación del cambio

#### ¿Tienes preguntas sobre el cálculo de tu sentencia?

Puedes enviar un formulario de comunicación de AIC (CD214) a tu Analista de Término de Prisión (PTA). El PTA puede darte un desglose detallado del cálculo de tu sentencia, explicarte cómo se aplicó el TSC y responder otras preguntas relacionadas.

Si crees que te corresponde más crédito por tiempo cumplido bajo ORS 137.370(4) o que tu cálculo es incorrecto, puedes:

- Trabajar con un abogado para obtener una sentencia corregida
- Consultar con un asistente legal en la biblioteca legal de la institución
- Escribir a la corte que emitió tu sentencia

Debido al volumen y la complejidad de estas revisiones, este proceso tomará tiempo, y no todos los casos resultarán en cambios en la fecha proyectada de liberación.]

To: All Adults in Custody

## Coming Soon: Tablet Expansion and Mail Modernization

Soon every **Adult in Custody will have access to their own state-issued tablet.** We'll also move to digitally scanned mail. This will take time to implement, but we want you to know what it means and what you can expect.

### Why We Are Doing This

- We want you to have better access to tools that support communication, learning, and personal growth.
- Tablets help AICs stay connected with family, complete programs, and get information in a safe way.
- This will make access to tablets equitable and help those with more demanding work and programming schedules have access to tablet-based services.
- Scanned mail helps make our institutions safe.

### What Happens Next

- The move to 1:1 tablets will happen **gradually**, and each facility will get information before changes take place. We anticipate distributing tablets in fall of 2026.
- You will receive instructions about how to use, care for, and secure your device. DOC will share more details as the plan develops.

### What are the Details on Scanned Mail

**Most personal mail will be scanned and delivered digitally. Legal mail and certain other materials will still be handled physically.**

**More information will be published as we move closer to this becoming a reality. We anticipate implementing scanned mail near the end of 2026. We'll have a more accurate timeframe in a few months.**

### Our Commitment to You

**We know communication, education, and staying connected to loved ones matters. We are committed to making this transition as smooth as possible.**

If you have questions, please submit a *Communication System Requests form* to your local Inspector 1.

### To access the new form:

- i. Log in to the tablet
- ii. Go to the free profile
- iii. Open the "Requests" app
- iv. Click on the "Others" category
- v. Select the "Communication System Requests" form

**Para:** Todas las personas bajo custodia

## **Próximamente: Expansión de tabletas y modernización del correo**

Pronto, cada persona bajo custodia tendrá acceso a su propia tableta proporcionada por el estado. También vamos a cambiar a un sistema de correo escaneado digitalmente. Esto tomará tiempo en implementarse, pero queremos que sepas qué significa y qué puedes esperar.

### **Por qué estamos haciendo esto**

- Queremos que tengas mejor acceso a herramientas que apoyen la comunicación, el aprendizaje y el crecimiento personal.
- Las tabletas ayudan a mantenerse en contacto con la familia, completar programas y acceder a información de forma segura.
- Esto hará que el acceso a tabletas sea más equitativo, especialmente para quienes tienen horarios de trabajo o programas más exigentes.
- El correo escaneado ayuda a mantener nuestras instituciones seguras.

### **Qué sigue**

- La transición a una tableta por persona se hará poco a poco, y cada institución recibirá información antes de que ocurran los cambios. Anticipamos distribuir las tabletas en el otoño de 2026.
- Recibirás instrucciones sobre cómo usar, cuidar y mantener segura tu tableta.
- El DOC compartirá más detalles a medida que el plan avance.

### **Detalles sobre el correo escaneado**

La mayor parte del correo personal será escaneado y entregado digitalmente. El correo legal y ciertos otros materiales seguirán manejándose de forma física.

Se publicará más información a medida que nos acerquemos a la implementación. Anticipamos que el correo escaneado comenzará hacia finales de 2026. Tendremos un plazo más preciso en los próximos meses.

### **Nuestro compromiso contigo**

Sabemos que la comunicación, la educación y mantenerse conectado con los seres queridos es importante. Estamos comprometidos a hacer que esta transición sea lo más sencilla posible.

Si tienes preguntas, envía un formulario de “Communication System Requests” a tu Inspector 1 local.

#### **Para acceder al nuevo formulario:**

- i. Inicia sesión en la tableta
- ii. Ve al perfil gratuito
- iii. Abre la aplicación “Requests”
- iv. Haz clic en la categoría “Others”
- v. Selecciona el formulario “Communication System Requests”

## **Coming May 2026!**

Education Tutors will receive in-person training with CAST Universal Design for Learning (UDL). This 5-hour training will enhance technical proficiency, benefiting the students they tutor and the education program. UDL certification fosters the development of highly transferable skills such as communication, adaptability to different learning styles, and critical thinking. Certification demonstrates leadership, responsibility and a capacity to guide others, which are transferable to employment and highly valued in today's job market.

Education Tutors at DRICI, EOICI, TRICI, SRCI and WCCF will engage in CAST UDL training and certification starting in May.

## Magazine and Book Reviews by Mailrooms

Books and magazines that come through ODOC's mailrooms are each reviewed individually to determine if they meet the standards set forth in ODOC's mail rule, which can be found at OAR Chapter 291, Division 131 "MAIL (AIC)".

Under OAR 291-131-0037 8(b), "Vendors that repeatedly send prohibited content to adults in custody after multiple violation notices informing them of mail rule standards may be restricted."

Currently, there are no magazine vendors prohibited based on this criterion. What this means is you can subscribe to any magazine you'd like, but each issue of the magazine will be reviewed as it arrives at the facility. If mailroom staff determine that a specific magazine issue violates the rule, it is marked in the system as "provisionally rejected" with the suspected violation noted for review by the mail rule central administrator. When magazine issues or books are provisionally rejected, they are held at each facility mailroom until the next steps of the review are taken. The central administrator will then either confirm the rejection or will disagree and the magazine issue will not be rejected. This is why a magazine issue may be ok one month, then the next issue rejected the next month.

*There is an appeal process for these magazine issues or books that are provisionally rejected by the mailroom staff and confirmed for rejection by the central administrator. As written in the CD618A "Mail Violation Notice" the appeal is sent to **the Functional Unit Manager at the facility where the violation notice was written**. This is the Superintendent at the facility, who likely has a designee responsible for mail. The Functional Unit Manager has the latitude to review the material and determine if they want to allow a magazine issue or book that violates the rule into *the facility they are responsible for*.*

ODOC recently made changes to the mail rule to help mitigate the smuggling of drugs into facilities. ***The rules regarding pictorial or written content did not change, they are the same.***

Note: Magazines change over time. Every new editor may result in differences in the magazine content. When attempts are made to "find the line" of what's ok and what's not, when boundaries are pushed to find where that line is, eventually the line is crossed. There are some magazines which previously had content that did not cross the line, but lately they have pushed across the line with what they write or the pictures they print. When that happens, more individual issues of that magazine end up being rejected. People may assume the entire magazine publication is banned when it is not.

As a customer or potential customer of a magazine, you must determine if you want to spend money on magazines that seem to be rejected regularly.



# How Many Notes are there in Music?

In music there are 12 notes. The letter names for the notes are used for the first 7 notes of our alphabet. That is: A B C D E F and G. That is 7 notes, and I said that there were 12; we use sharps (#), and flats (b), in between some of these 7 notes, until we have 12 notes. We can use boxes to illustrate the way in which the musical alphabet is laid out.

<b>A</b>		<b>B</b>	<b>C</b>		<b>D</b>		<b>E</b>	<b>F</b>		<b>G</b>		<b>A</b>	This is the musical alphabet
<b>A</b>	<b>A#</b>	<b>B</b>	<b>C</b>	<b>C#</b>	<b>D</b>	<b>D#</b>	<b>E</b>	<b>F</b>	<b>F#</b>	<b>G</b>	<b>G#</b>	<b>A</b>	This is all 12 notes, using sharps (#)
<b>A</b>	<b>B<sup>b</sup></b>	<b>B</b>	<b>C</b>	<b>D<sup>b</sup></b>	<b>C</b>	<b>E<sup>b</sup></b>	<b>E</b>	<b>F</b>	<b>G<sup>b</sup></b>	<b>G</b>	<b>A<sup>b</sup></b>	<b>A</b>	This is all 12 notes, using flats (b)



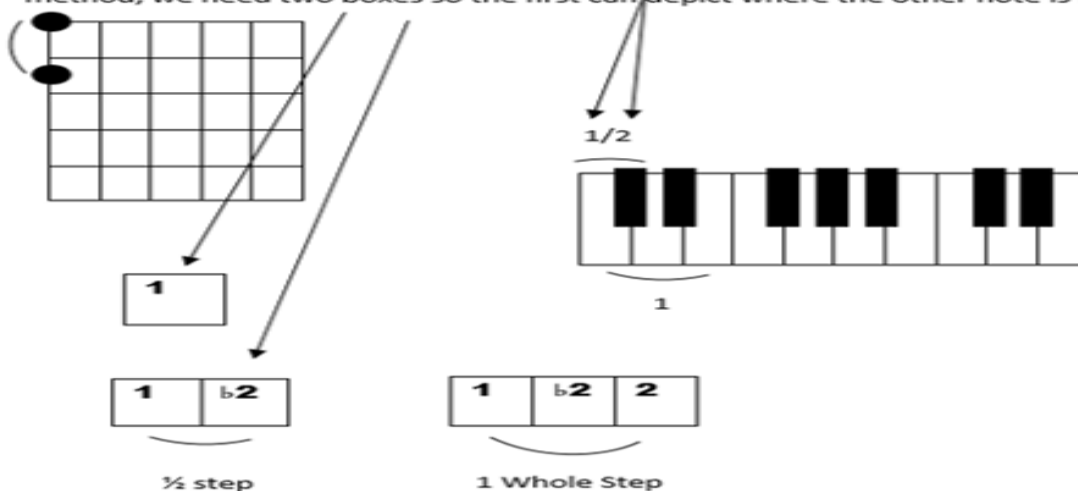
These are the 'in between' notes. Notice that depending on the circumstance, notes can be called different things. The arrows point at the instances in which they are spelled as a sharp (#), or a flat (b). an A# is a b, there are rules governing the processes of what the note is called, but that is dependent on the context.

I would draw your attention to the fact that there are two A notes in the chart. I put them in to show two important things: one, the distance from the A note to the next A note is called an **Octave**. The same can be said of any note to its counterpart up or down. Secondly, these octaves are theoretically infinite ascending or descending. If you'd like to compose music for dogs, then maybe you'd be in the higher non-human range while choosing your notes!

I've always found it to be pretty amazing that there are only 12 notes, yet if you ask 100 musicians to write a song, they'll all be different. Mozart was using the same 12 tones, and I don't know how many times I have marveled at the fact that he found such beauty and grace in all of the 12 tones that I have been using my entire life. *People are creative creatures, and just listening to one another's musical ideas seems to be a good place to begin a study of music theory.*

The weird boxes. Not everyone uses these boxes, I was introduced to them when I was using the *Guitar Grimoire* by Adam Kaplan. He uses the boxes to map out chords and scales, and it was, to me, extremely useful. I tend to use the when discussing the nature of chords and scales, because it can be a tough subject. Essentially, music is mathematical. We measure points to another and call it an interval, but the segment can be akin to a line, which is geometry. The strings of an instrument vibrate at various speeds, the concert pitch for an instrument is A 440, which means that the note vibrates at 440 per second. If you look at your guitar tuner, you'll see a feature that allows you to change the pitch to varying degrees, as some artists seem to prefer to be a few cents sharp, or flat, to A 440. Dime bag Darrel is one who seems to tune a few cents sharp to A 440, there are countless individuals who prefer to do this. But I digress, the boxes seem to be the best way to take in, or present this type of information. Mel Bay has a lot of books and you'll never see these boxes in his method. But he is unequalled as an educator.

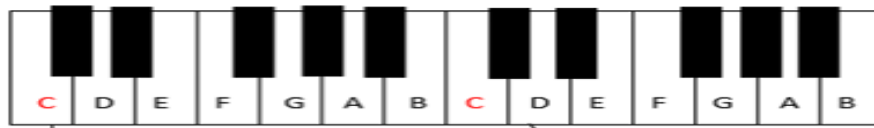
Here we have a simple square, in this method, the single square equals a 1/2 step. That is one fret to another on the guitar, and a **white key to a black key on the keyboard**. So, to move a 1/2 step in the method, we need two boxes so the first can depict where the other note is measured from:



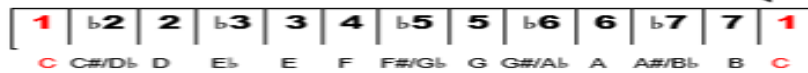
**The major scale can be spelled in steps like this:**

**1 1 1/2 1 1 1 1/2 ( the white keys on the piano.)**

The entire musical alphabet can be transcribed this way:



And most important to the method is that the notes can be expressed by numbers. Here are all 12 tones, numerically.

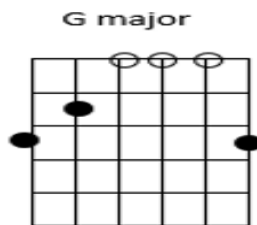
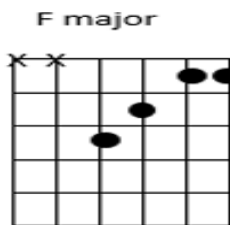
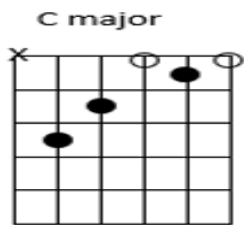


By using the numerical system, we can talk about every key all at once. This example is in C, but the 1 could be any of the letter names. This is very convenient for talking about the inner workings of music in a general way. Anything that can be done with the numerical system can be applied to any key. Once the idea sinks in, and we've used it to your benefit, it'll be like breathing air.

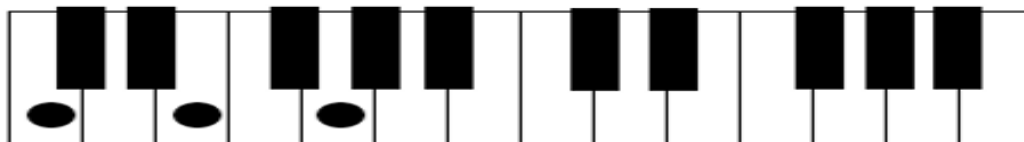
1	b2	2	b3	3	4	b5	5	b6	6	b7	7	1	
1				3			5					1	<i>This is the formula for a major chord</i>
1			b3				5					1	<i>This is the formula for a minor chord</i>

What are the letter names if 1 = C ?

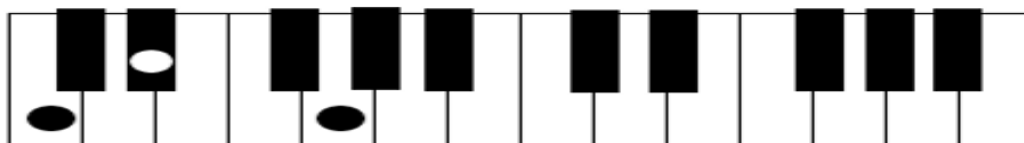
Here are some examples of guitar and piano chords in C major:



C major



C minor



F major





# PUBLIC RECORDS REGARDING VISITING, PHONES, AND MESSAGES

## Why Certain Communication Records Are Not Publicly Shared

- The Oregon Department of Corrections (ODOC) is committed to supporting successful reentry by encouraging adults in custody to maintain meaningful connections with family and friends. Research shows that regular contact—through visits, phone calls, and messages—can improve behavior and reduce the likelihood of reoffending.
- To support these outcomes, Oregon law allows ODOC to keep certain records confidential, including visitor logs, phone communication records and recordings, tablet and MP3 messages, and information that could identify individuals communicating with an adult in custody.

## Why This Information Is Kept Confidential

### To support a respectful and welcoming experience

- The Attorney General has recognized that individuals may be less likely to connect if their personal information or communications could become public. Protecting privacy helps ensure people feel comfortable maintaining these important relationships (Crombie, February 17, 2017).

### To strengthen rehabilitation efforts

- Consistent communication with supportive individuals plays a key role in rehabilitation. Maintaining confidentiality helps remove barriers to that contact and supports positive outcomes (Crombie, 2017; Contreras, January 6, 2020).

### To serve the broader public interest

- Under Oregon's Public Records Law, records may be withheld when confidentiality better serves the public. The Attorney General determined that protecting this information supports rehabilitation and community safety, while public disclosure provides limited benefit (Crombie, 2017; Contreras, 2020).

## Summary

Certain visiting and communication records—including phone, tablet, and MP3 messages—are not publicly shared to encourage continued connection between adults in custody and their support networks. Protecting this information supports rehabilitation and contributes to safer communities.



## Postage Announcement

On the next page is an announcement from USPS.

### What You Need to Know

- The April 26, 2026, temporary USPS price increase **affects packages**—USPS classifies larger and rigid envelopes as packages (including those sold on canteen).
- #10 business envelopes from Canteen are not affected (if they meet the size, weight, and shape restrictions). These envelopes already include pre-printed postage and are not part of the April 26, 2026, USPS price adjustments.

Example anticipated, **estimated** postage costs for commonly mailed items:

- Musical Keyboard ≈ \$135
- Guitar ≈ \$115

**Keep in mind that the region to which you are mailing the item *also* affects the pricing.**

If you have questions, please kyte the Mailroom.



FOR IMMEDIATE RELEASE  
March 25, 2026

Contact: Marti Johnson  
[martha.s.johnson@usps.gov](mailto:martha.s.johnson@usps.gov)  
[usps.com/news](https://usps.com/news)

## U.S. Postal Service Announces Transportation-Related, Time-Limited Price Change

WASHINGTON — The U.S. Postal Service filed notice today with the Postal Regulatory Commission (PRC) regarding a time-limited price change to better align its costs of transportation with the market. This temporary price adjustment will provide needed flexibility for the Postal Service by helping to ensure that the actual costs of doing business are covered, as required by Congress.

While this price increase is a time-limited adjustment, it will provide a necessary bridge to a permanent mechanism to reflect market conditions in prices for competitive products that can support the Postal Service's ability to achieve the universal service obligation in a more financially sustainable manner going forward.

The planned price change, which was approved by the Governors of the Postal Service on March 24, is an 8 percent increase that would affect base postage prices on the following retail and commercial domestic competitive products: Priority Mail Express, Priority Mail, USPS Ground Advantage, and Parcel Select. No other products or services would be affected, including First-Class Stamps. Pending favorable review by the PRC, the price change would go into effect at midnight Central Time on April 26 and would remain in place until midnight Central Time on Jan. 17, 2027. At that time, the Postal Service can determine if a different long-term approach is needed.

Transportation costs have been increasing, and our competitors have reacted with a number of surcharges. We have steadfastly avoided surcharges and this charge is less than one-third of what our competitors charge for fuel alone, so even with this change, the Postal Service continues to offer great value in shipping with some of the lowest rates in the industrialized world.

The time-limited price change is consistent with industry practices and will support the Postal Service's ability to continue achieving its public service mission — providing a nationwide, integrated network for the delivery of mail and packages at least six days a week — in a cost-effective and financially sustainable manner over the long term, just as the U.S. Congress has intended.

The PRC will review the proposed price change before it is scheduled to take effect on April 26. Complete USPS price filings, with prices for all products, can be found on the PRC website's Daily Listings section at [prc.arkcase.com/portal/filings](https://prc.arkcase.com/portal/filings). Price tables are also available on the Postal Explorer website at [pe.usps.com/PriceChange/Index](https://pe.usps.com/PriceChange/Index).

###



**Please Note:** The United States Postal Service is an independent federal establishment, mandated to be self-financing and to serve every American community through the affordable, reliable and secure delivery of mail and packages to more than 170 million addresses six and often seven days a week. Overseen by a bipartisan Board of Governors, the Postal Service is celebrating its 250<sup>th</sup> year of service to customers amidst a network modernization plan aimed at restoring long-term financial sustainability, improving service, and maintaining the organization as one of America's most valued and trusted brands.

The Postal Service generally receives no tax dollars for operating expenses and relies on the sale of postage, products and services to fund its operations.

*From the Administrative Rules Program:*

Below is the list of status changes made to DOC administrative rules since 3/6/2026.

**PROPOSED RULES:**

**291-014 Arrest and Transport**

- Amends rule to make minor grammatical edits, clarify the rules, change the term “offender” to “AIC”, incorporate changes in the department’s business terminology, and remove gendered language.
- **Comment Period:** Comments must be received by the Rules Office before 12:00PM (noon) on 5/20/2026.

**291-027 Death (AIC)**

- Amends rule to permanently adopt the temporary amendments that establish the department’s policy and procedures for the department’s cooperation with death investigations, including reporting responsibilities and applicable information retention, and for the review of an unexpected death of an adult in custody; and to adopt other updates that change the term “inmate” to “AIC”; make minor grammatical edits; define terms used in rules newly adopted to this division; edit for clarity, conciseness, or consistency with other department rules; update to standard definitions; update policy titles; remove gendered language or use current terminology; and remove requirement to report to ICE.
- **Comment Period:** Comments must be received by the Rules Office before 12:00PM (noon) on 5/20/2026

**291-076 Suicide Prevention in Correctional Facilities**

- Amends rule to permanently adopt the temporary amendments that establish a new process for the review of an unexpected death of an adult in custody (AIC), including a death that is suspected to be caused by, related to, or associated with an act of self-harm
- **Comment Period:** Comments must be received by the Rules Office before 12:00PM (noon) on 5/20/2026

**TEMPORARY RULES:**

**291-027 Death (AIC)**

- Amends rule to establish the department’s policy and procedures for the department’s cooperation with death investigations, including reporting responsibilities and applicable information retention, and for the review of an unexpected death of an adult in custody.
- **Effective:** 3/31/2026 through 9/19/2026

**291-076 Suicide Prevention in Correctional Facilities**

- Amends rule to permanently adopt the temporary amendments that establish a new process for the review of an unexpected death of an adult in custody (AIC), including a death that is suspected to be caused by, related to, or associated with an act of self-harm
- **Effective:** 3/31/2026 through 9/26/2026

**PERMANENT RULES:**

**291-180 Interstate Compact**

- Amends rule to incorporate by reference the current official ICAOS rules adopted by the Interstate Commission for Adult Offender Supervision effective April 1, 2026.
- **Effective:** 3/26/2026



**PRISON RAPE ELIMINATION ACT  
(PREA INFORMATION)**

The Oregon Department of Corrections (ODOC) has a zero-tolerance policy for sexual abuse, sexual harassment and for retaliation for reporting an incident. You may report in person to any staff, through an inmate communication, through the grievance system, by calling the PREA hotline by dialing 9 from any inmate phone.

Filing an Anonymous PREA Report

If you are uneasy about filing a PREA allegation, you may file an anonymous report with an outside agency.

You may write to:

**Governor's Office of Constituent Services  
900 Court Street NE, Suite 160  
Salem, Oregon 97301**

Please indicate in the beginning of your letter you are filing a PREA allegation and you are requesting to remain anonymous. The Governor's Office will refer all anonymous allegations to the DOC PREA Coordinator to assure an investigation is completed based off the information that is provided.

**Community-Based PREA Advocacy (Support) Program**

ODOC has partnered with community based, confidential advocates of sexual abuse victims to provide services to inmates. Inmates at ODOC who have experienced sexual abuse may reach a community-based advocate by dialing 711 inmate telephone systems, or may request a private call through the PREA Compliance Manager at the facility. Advocates provide victims of sexual abuse information about their options, resources, information and emotional support. There is no charge for calls to advocates.

Role of an Advocate:

- Provide confidential support and crisis intervention
- Inform you about the investigation and medical examination process
- Educate you about healing from sexual abuse
- Offer resources and referrals

Advocates will:

- Not tell you what to do
- Not communicate with the institution unless you request them to do so and sign a release
- Not provide legal advice

Community-based advocacy centers provide sexual abuse support to people of all genders. Community-based advocates will not report unless you request them to do so and if you sign a release of information.

DOC is committed to providing inmates with avenues to seek assistance. Below are additional resources:

**Just Detention International Headquarters  
3325 Wilshire Blvd., Suite 340  
Los Angeles, CA 90010**

The community-based advocacy crisis line is for individuals needing assistance coping with sexual abuse related issues and should not be used for other purposes.

Telephone calls and mail with community-based advocacy centers is considered privileged communication and will be handled similar to legal calls/official mail.

If you have any other questions regarding PREA, you may ask any staff member, write the PREA Compliance Manager at your institution, or you may write:

E. Sage, PREA Coordinator  
Oregon Department of Corrections  
2575 Center St. NE  
Salem, Oregon 97301