

ARRASTRA, crude ore-grinding device, was used to mill gold-bearing quartz by dragging heavy stones over a grinding floor, reducing ore to powder from which the metallic content was separated. Several were in use in Josephine County at the turn of the century and were usually powered by an overshot water wheel.—Courtesy Josephine County Historical Society, Voorhies Collection.

High Grade Warner Mine in Jackson County Has New 300-ft. Tunnel

The Warner Mine, a small high grade gold deposit, located at the head of Last Chance Creek just south of the Starveout Creek-Grave Creek divide has been worked off and on over a period of about 40 years. Present owners of the mine are A. M. Ropp and J. C. Wells of Albany, Oregon and the mine is under lease to M & B Logging Co. of Canyonville (Markham brothers and Brown brothers). Ken Brown and Don Warner are carrying on the mining operations. They have driven a new 300-foot tunnel under the

old workings and are currently drifting on the vein.

The main mineralized vein strikes about N. 25 degrees W. and dips steeply to the northeast. Thickness of the vein will average about 2½ feet. The vein is in a contact zone between metagabbro and serpentine. The gold occurs both as free-milling and combined with arsenopyrite. Gangue material in the vein includes sheared metagabbro and serpentine along with seams of calcite, a minor amount of quartz and occasional lenses of sulfides, largely arsen-

opyrite with lesser pyrite and rare chalcopyrite. Values in the vein are quite variable. Assays of ore samples obtained through the state are from a few dollars to better than \$4,000 a ton in gold. A sample of mill concentrates obtained in 1957 assayed \$8,811.30 in combined gold and silver values per ton.

The present operators have installed a new mill a short distance below the mine on Last Chance Creek. Some mill testing has been done, and further work on the mill is anticipated before they go into full production.

17-OUNCE NUGGET

April 3, 1885 from Althouse. On the claim of Chas. Felt and George Gleason, known as the "Old Sling Claim," a nugget of gold was recently picked up which weighed 17 ounces.

Mining Outlook In Josephine County Shows Interest Developing

By LEN RAMP
State Dept. of Geology and Mineral Industries, Grants Pass, Ore.

A fresh new approach to mineral exploration and the most promising development in sight is the application of geochemical and geophysical exploration in our area. The State of Oregon Department of Geology and Mineral Industries recognizing that all of the obvious mineral deposits have already been found by prospectors, is seeking information pointing to hidden mineral deposits. The department has begun a long-range geochemical state-wide sampling program. Fine grained stream sediments are being sampled in the Grants Pass area by Gary Shaffer, geology student from the University of Oregon. These samples will be analyzed for trace amounts of three metals — copper, zinc, and molybdenum. These metals were chosen because they occur either as ore or as indicators of the main types of deposits that might be expected. Analysis of samples will be made in the Portland office of the department by student help using standard rapid chemical analytical procedures.

When anomalous concentrations of metal are found they will be field checked by department geologists, using a geochemical testing process. Publication of the data will be in the form of maps with symbols to indicate sample location and amount of elements present.

Private mining companies are also applying these new techniques and I believe have already renewed hopes for developing new mining industry in our area.

Current mining activity is southwestern Oregon consists of the following:

1. About 20 seasonal placer operations mainly in Josephine, Jackson and southern Douglas counties.

2. About 10 small lode-gold mining operations that consist mainly of exploration and development. The Warner Mine and the Little Arctic Mine in northern Jackson County, the M.C. prospect near Canyon Peak, the Lucky Bart Mine on Sardine Creek, the Gold Plate Mine on the north fork of Galice Creek, the Dark Canyon

and Snowbird Mines near Williams, the Shot Mine and Oro Grande in the Greenback district and the Ashland Mine near the town of Ashland are among those being worked.

3. The Nickel Mountain operation of Hanna Nickel Co. at Riddle is presently the largest single asset to our state's metal mining industry. They employ about 450 men and produce in excess of 21 million pounds of nickel annually. It is the only producing nickel mine in the United States.

4. In the industrial minerals field, the Bristol Silica Co. is an active producer of metallurgical quartz and granules for various uses including Hanna Nickel Co., Carborundum Co., national metallurgical and cement companies. At present they have 14 employees and produce approximately 200 tons of rock per day on a 5-day week.

The Quartz Mountain deposit in Douglas County is new to the field and has grade problems but represents a large future potential source of silica.

5. The Ideal Cement Co. operation at Marble Mountain employs 9 men and they produce about 800 tons of highgrade lime per day on a 5-day week basis. The cement plant at Gold Hill has 80 or more employees.

Let's look at the future potential developments in our area. We have seen considerable interest in iron, especially the disseminated magnetite in ultrabasic rocks such as olivine gabbros and pyroxenites. Two companies have recently investigated the Tincup Peak Prospect in Curry County and interest is still being shown in these iron-bearing formations.

Interest is still present in the nickel-bearing laterites (red soils developed over peridotite) in southwestern Oregon and northern California. Considerable exploration work was done on the laterites of Eight Dollar Mountain and Woodcock Mountain in the Illinois Valley just three years ago. The U.S. Bureau of Mines has recently published a report on the northern California deposits in the Pine Flat and Diamond Flat area, Report of Investigations 6206, by W. T. Benson.

Chromite has nearly been for-

(Continued on Page 8)

Fair Program

WEDNESDAY

9:00 Judging In All Departments
1:30 Horse Races On Track
4:00 Midway Show
7:00 Band
8:00 Midway Show

THURSDAY

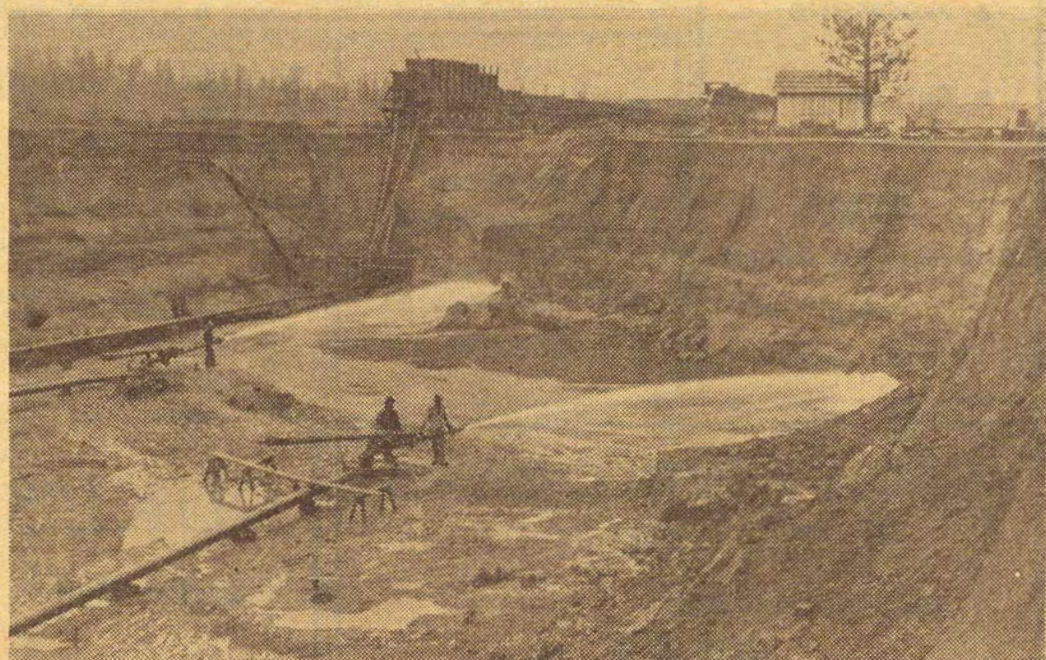
9:00 Judging
1:30 Horse Races
4:00 Midway Show
7:00 Band
8:00 Midway Show

FRIDAY

8:00 4-H Horse Judging
1:30 Pony Races
3:30 Midway Show
4:00 Midway Show
8:00 4-H Horse Show
8:00 Junior Fat Stock Auction
8:30 Square Dancing

SATURDAY

8:00 Open Class Horse Judging
1:30 Pony Races
3:30 Midway Show
7:00 Midway Show
8:00 Open Class Horse Show
8:30 Square Dancing



HYDRAULIC operations at the J. T. Logan mine (former Cameron placer) near Waldo about 1910. G. M. Esterly acquired the property in 1917 and the site has since been known as the Esterly Mine. Mr. Logan and Elliot Young are pictured operating the giants that excavated pits to depths of 50 feet which are now filled with water forming Esterly Lake. Courtesy Josephine County Historical Society (Murphy Young Collection)

OVERLAND MAIL ROUTE TO OREGON.

Through in Six Days to Portland!!



CONNECTING WITH THE DAILY STAGES

To all the Interior Mining Towns in Northern California and Southern Oregon.
Ticketed through from SACRAMENTO, through Marysville, over the Railroad to Oroville, connecting there with the

OREGON LINE OF STAGE COACHES!

To Chico, Tehama, Red Bluff, Shasta, Trinity Centre, Yreka, and in Oregon—Jacksonville, Canyonville, Roseburg, Winchester, Oakland, Eugene City, Corvallis, Albany, Salem, Oregon City, to PORTLAND,

TRAVELERS AVOID RISK OF OCEAN TRAVEL

Pass through the HEART OF OREGON—the Valleys of Rogue River, Umpqua and Willamette.

This portion of the Pacific Slope embraces the most BEAUTIFUL and attractive, as well as some of the most BOLD, GRAND and PICTURESQUE SCENERY on the Continent. The highest snow-capped mountains, (Mt. HOOD, Mt. SHASTA and others,) deepest ravines and most beautiful valleys.

Stages stop over one night at YREKA and JACKSONVILLE, for passengers to rest. Passengers will be permitted to lay over at any point, and resume their seats at pleasure, any time within one month.

FARE THROUGH, FIFTY DOLLARS.

Ticket Office at Sacramento, near the Steamboat Landing.

H. W. CORBETT & Co.,
Proprietors Oregon Stage Line.

July 20, 1866

[W. D. Carter, Printer, Front St., Portland, Oregon.]

Only Known Deposit Of Oregonite Is In Josephine County

Oregonite, recognized for its commercial possibilities in the early 1930's, is mined exclusively in Josephine County. The only known deposit in the world is in the Illinois Valley district and was discovered by Bert Barnes a Grants Pass jeweler, now deceased. Under the name of Riverview Mine, the claim is owned by Mr. Barnes' widow and son, A. Donley Barnes of Grants Pass.

Walter Talmadge, an agate cutter of that day, polished a few pieces and showed them to Mr. Barnes merely as an interesting specimen of native rock. Barnes was impressed with their unique beauty and saw in them commercial possibilities. The coloring shades through pink, red, brown to almost black, with white or creamy edging.

The gem material is found in a narrow seam having an extremely hard matrix on either side and occurring in very hard ledge matter. Its variety of marking makes each stone an individual specimen.

A. Donley Barnes, currently

Galice, Ore., Dec. 2, 1899— Al Cousins has brought his better half to share with him the lonely vigils of a miners life. Oh, if all our young and hardy miners would do the same, instead of the comfortless bachelor quarters, that many of them live in, we should see nice, comfortable cabins, smiling faces and loving families growing up about us.

Galice, Ore., Dec. 2, 1899— Al Cousins has brought his better half to share with him the lonely vigils of a miners life. Oh, if all our young and hardy miners would do the same, instead of the comfortless bachelor quarters, that many of them live in, we should see nice, comfortable cabins, smiling faces and loving families growing up about us.

AIR CONDITIONED

PALM MOTEL

Sixth At Savage

GRANTS PASS,
OREGON

FREE T-V

TELEPHONE

479-2338

Walter & Wilma York

SOURDOUGH RECIPES By WILDA TEAGUE

Sourdough Hotcakes

2 cups sourdough
1 tablespoon sugar
1 scant teaspoon soda, dissolve in a little water
1 egg
pinch salt

Sourdough Biscuits

3 cups sourdough
1 scant teaspoon of soda
2 cups flour
pinch salt

Sift dry ingredients together and mix with dough. Make into biscuits—let rise ten minutes before baking.

WHERE BUYER AND SELLER MEET

COGSWELL REALTY

REDWOOD HOTEL ANNEX

118 N.W. "E" Street

GRANTS PASS, OREGON

Business Phone

476-5111

Home Phone

582-3789

A cubic foot of pure gold weighs 1,215.9 pounds. A cubic foot of water weighs 62.4 pounds. A cubic foot of cast iron weighs 450 pounds.

REDWOOD MEAT CO.

- CUTTING
- WRAPPING
- PROCESSING
- and
- CUSTOM KILLING

MEAT
WHOLESALE & RETAIL

1930

Redwood Avenue

Who Are Josephine County Sourdoughs?

The Josephine County Sourdoughs is an organization of persons interested in the development of the mineral potential of Southwestern Oregon. Some of the members are prospectors and miners. Some are business men who can remember the important part that mining played in the development of this section of the country when the comparative price of gold and other minerals was sufficient to give an incentive to men to develop the mines of this area. We are all looking forward to the time when mining will again play an important

part in the economy of this area. There are two membership classes, ctive and associate members. Active members are those who are directly involved in mining and pay a yearly fee of five dollars; Associate members, who do not vote, pay a \$2. membership fee and are not presently engaged in mining.

Sourdough meetings are held the second Tuesday of each month at the Community building in Grants Pass.

A pound of pure gold at \$35 an ounce is worth \$420 while a ton of pure gold is worth \$840,000.

CLAUDE MASTERS

REGISTERED
LAND SURVEYOR

344 Valley View Rd.

479-1897

Sourdough Gazette

Published By
JOSEPHINE COUNTY
SOURDOUGHS, INC.
Josephine County, Oregon
Len Schaffer, President
George Reynolds & Wilda Teague
Editors
Dorothy Darnielle and Elizabeth Hiller, Historical Research
E. B. Webb and Jack Hawkins
Advertising
Harvey Dickey, Advisor

DUKE'S

Barber Shop

"49er" HAIRCUTS

110 S.W. "J" Street

VALLEY WOODYARD

STAY WARM !!

YOU COULD IF YOU
WOOD

WITH US

Telephone: 476-5237

B & J AUCTION

All Types

COMPLETE DISPOSALS

- REAL ESTATE
- FURNITURE
- MACHINERY

334 UNION AVENUE

TELEPHONE 476-2111



PICK AND SHOVEL surface mining in Southern Oregon during the gold rush years of the 1850's. Sluice boxes and gold pans were standard equipment on the early mining scene. Courtesy Josephine County Historical Society (Jack Sutton Collection)

Big Finds Listed In Southwestern Oregon

The largest nugget ever found in the Southern Oregon district was discovered in 1859, by Mattie Collins on the east fork of Althouse Creek. This piece of gold weighed 204 ounces, 17 pounds troy and was valued at approximately \$3500. The present price of refined gold would have brought its value up to more than \$6000.

Some of the other finds in local properties have been:

1858—Vaun nugget, \$800., found on Slug Bar near Browntown.

1892—Oscar Creek nugget, \$365, found by Boardman Darneille.

1904—Klippel nugget, \$500 found in McDowell Gulch.

19—Oscar Creek, in the early

1900's several large nuggets, \$240, \$125 and \$100.

1934—Burns nugget, 34.37 ounces approximately \$1000, found in the Stovepipe Mine on Brimstone Gulch, near Leland.

1934—A piece of float found on Fooths Creek by E. R. Prefountain while placer mining, weighing out more than \$450.

There have been several notable "pockets" strikes from which large amounts were realized, among them by Scribner and Henderson, Wolf Creek district in 1900, \$50,000; the Briggs strike, Sucker Creek district in 1904, approximately \$35,000; and the Robertson, in the Galice district in 1926-27, variously estimated at \$100,000.

Way Back When-

Jan., 14, 1910—The Wise Dental Co. of Grants Pass advertised the following prices on dental work in the Courier. Gold Fillings \$1.00, Silver Fillings \$0.50, Painless Extraction \$0.50.

March 9, 1910—Mr. Ramsey, the invincible, is too busy sluicing and taking out the yellow metal and platinum to even come down to Wonder store for his mail.

Dec. 9, 1899—Since the fire the office of the Grants Pass Coffin Co. is at Hale's Furniture Store next to the Layton Hotel. They are still selling fine trimmed caskets at \$10 and \$20.

WOOD 'N ROCK SHOP

Rocks and Myrtlewood

Also

Second Hand Store

Lloyd & Dene Pugh

¼-Mile North of

Selma, Oregon

Right on 199 Hwy.

Did You Know?

1 ounce Troy equal 31.103 grams.
1 ounce Avirdupois equal 28.35 Grams. There are 12 ounces to a pound in Troy weights while there are 16 ounces to a pound in Avirdupois weights.

In 1856 Mr. L. H. Guthrie, Josephine county's first county school superintendent received a salary for the first year of \$300.

Way Back When-

Wonder, MARCH 9, 1910—Herch McClung came in with some nice nuggets, bought a pair of gum boots and supplies and went back to hunt some more nuggets.

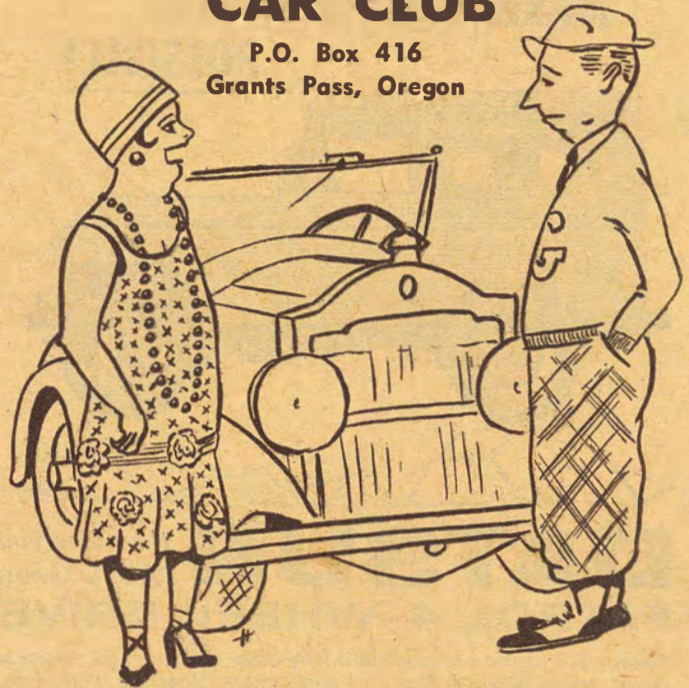
To most of the early day miners in Southwestern Oregon platinum was considered a nuisance and was thrown away.

May 28, 1886—A nugget weighing \$300 was recently picked up by McDonal on Wagner creek. It is said to be a beauty.

Dec. 2, 1899—George K. Quine is in this city from Riddles. He is now engaged in hauling nickel ore from the mines to the station for shipment east to be tested.

CAVEMAN VINTAGE CAR CLUB

P.O. Box 416
Grants Pass, Oregon



"What! In that old thing?"

**YOU STRIKE
PAY DIRT
When You Read**

The

Grants Pass Daily Courier



INTERNATIONAL

SCOUT

Here Now

Compact

Economical

"The Prospectors' Friend"

**TOMMIE'S
SERVICE, Inc.**

324 Redwood Highway

News . . .

THE COURIER excels in variety and thoroughness of both national and local news coverage, in pictures and in the most complete news coverage of the greater Grants Pass area.

Classified . . .

THE COURIER excels in classified advertising offering the most varied assortment imaginable of services, real estate, business opportunities, jobs and merchandise of all types for sale.

Display Advertising . . .

THE COURIER excels in giving its advertisers a receptive audience of some 27,000 every evening . . . with advertising that awaits their time and convenience . . . made attractive with artwork, photographs and complete details.

Commercial Printing . . .

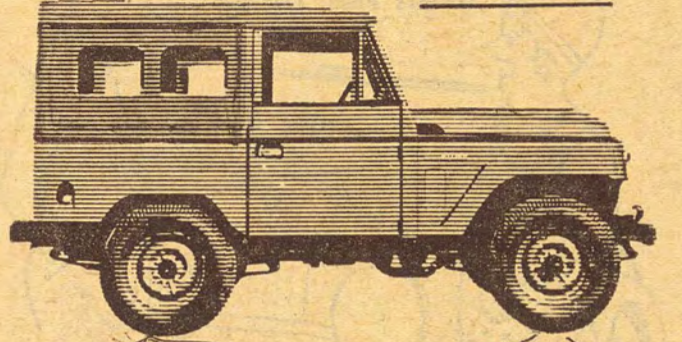
THE COURIER excels in job printing having a well equipped commercial printing shop, both letter press and offset. Cards, billheads, business and social forms of every type get careful, creative planning and prompt, precision printing here.

Pages from the Past

By Dorothy Darnelle and Jack Sutton
Josephine County Historical Society
A history of pioneer days in Josephine County for the most part is a story that tells of min-

ers and mining, as that industry was the sole occupation of the majority of the population in this section of the Oregon Country. Many of the early miners were the adventurous type of men who

**FOR MINERS AND ROCK HOUNDS
MAKES the IMPASSABLE
POSSIBLE!**



DATSUN the name you "AUTO" know
PATROL 4-WHEEL DRIVE

Takes a full payload or playload where other cars can't go. Sports a rough, tough body for years of punishment. Boasts a workhorse, waterproof 135 hp engine for thousands of miles of stream fording, rock climbing duty. Delivers road-ready with room for seven, plus advance design features like vertical swinging rear doors, lockable swingaway tire carrier, roll up windows, steel detachable doors, and many more. Drive it today. Own it tonight.

the only small feature is the price

\$2695⁰⁰
delivered

ROBERT C. MARTIN

Studebaker - Lark
Mercedes - Datsun

All parts immediately available from factory depots

711 S.E. Sixth Phone 476-4481

occasional washings. Beards? Well, it was the custom of the day for men to be bearded. And—who had time to shave anyway, or wash clothes for that matter, as long as gold was to be reclaimed from the earth? Cleanliness was practically a luxury under such circumstances and the niceties of civilization could wait. Yes, the average miner was rough and ready in manner and appearance and while he was anything but gentle his character was infused with a high regard for honesty and the laws of common decency. His opportunities, his difficulties and troubles, his victories and disappointments, his constant battle against the elements in a comparatively primitive land, and the dealings of his fellowmen were all direct and unbending in nature. Thus his reactions were equally direct. There were no legal procedures established here when the hordes of gold seekers arrived. If they dealt harshly with offenders such actions were usually the only solution under the conditions at the time. The miner merely adapted himself to conditions as he found them, met them on their own terms, accepted them when necessary, and improved them when-and-if-possible.

THE MINER

The generally accepted present day opinion is that the typical miner during the period of the Southern Oregon gold rush, was a lawless, uncouth individual whose days were spent in gun fights and nights drinking and gambling. True, there were "bad actors" in the region—both male and female—and many of their escapades are notorious. There are always those in quest of the "easy pickings" which could be obtained from the more gullible. Their prominence in the historical roster of early Oregon is due primarily to the fact that their exploits were news. Since they were "good copy" they have been played up with the passing of years while the more quiet activities of the great majority, somewhat colorless by comparison, were neglected.

The average miner, however, was an honest law abiding individual concerned primarily with ways and means of obtaining gold. He brought with him a dream of realizing those hopes which had brought him to the gold fields and demanded so much effort and personal sacrifice. True, his outward manner was often harsh and rough and in the mines he usually presented a rugged appearance. Booted, bearded, with a thatch of unkempt hair crowned by the typical black slouch hat of the day, he often wore leather trousers and a calico or flannel shirt—usually and unmistakably in need of washing and repair. But in those days the rough life he led and the heavy labor required precluded the possibility of anything but

Gold seekers came from all walks of life and from all grades of society. There were rich and poor, highly educated as well as those with little or no education, skilled and unskilled. But in the mines they were merged into a common mass of men grubbing for gold or serving those who so labored. Leaders soon emerged from the ranks to become Oregon's first citizens in nearly all walks of life.

Americans were not the only ones affected by the gold fever. People from practically every corner of the earth set out for the gold fields. From Europe came the English, French, German, Irish, Welsh and Italian with many others. From across the great expanse of the Pacific came men from Hawaii and Australia as well as great numbers of Chinese.

Thus the "call of gold" appealed to all races and in all creeds throughout the world, resulting in a migration which in many respects was without parallel in the annals of history.

FIRST GOLD DISCOVERY IN OREGON

The first gold discovery in Oregon that was mined for any length of time sufficient to record, was made on Josephine Creek a tributary of the Illinois River, in the spring of 1851. A California-bound mining party who had spent the winter in Oregon City, upon reaching the Rogue River were told by Indians of rich mines a few days travel "down the river." At this time the United States had just formed a treaty with Chief Jo of the Rogue River Indians and it was considered perfectly safe by some, to travel among them. The party found good surface mining at Josephine Creek and remained at this location until August. In a minor skirmish with a local tribe three Indians were killed. Though none of the mining party was hurt, the attack convinced the miners that the Indians were again on the warpath. The group returned to Yreka with the mounted company of volunteers that had been summoned to their assistance.

Lloyd Rollins and his 18 year old daughter Josephine who had started from Illinois overland with ox teams for the gold fields in California the previous spring, were members of this historic mining group. Josephine County, the only county in Oregon named in honor of a woman, was later named for Miss Rollins. She had been the first white woman to settle for any length of time in this part of the Oregon Territory.

NEXT CAME WALDO AND BROWNTOWN

In the fall of 1852 a group of British sailors deserted their ship at Crescent City and started for the newly discovered gold fields at Jacksonville but found rich gold deposits in the Illinois Valley a number of miles in an easterly direction from the earlier discovery on Josephine Creek. This discovery at "Sailor Diggings" immediately became an important mining center and soon claimed a population of several thousand. The community's name was later returned to Waldo in honor of William Waldo, brother of Daniel Waldo, a prominent figure in early Oregon history.

The history of Waldo is so interwoven with that of Browntown on

Althouse Creek where gold was also discovered in '52, as to make the story of each camp identical in many respects with the other. Miners and gamblers traveled back and forth from Waldo to Browntown and hundreds of thousands of dollars exchanged. Even with a mixture of rough happenings there were rounds of pleasure and enjoyment in those prosperous times when money seemed within the reach of everyone who was willing to work for it.

A great deal of the original mining around Waldo was done as in the first California camps, by the primitive method of hand shoveling "pay dirt" into sluice boxes. More miners made small fortunes here than at any other camp because the deposits were shallow and easily worked. In the early days of this camp it wasn't considered an unusual occurrence for an individual miner to make from ten to thirty thousand dollars in a few months. The large companies controlling the main ditches and water rights hired great numbers of men who earned for their owners tremendous fortunes.

FIRST MINING LAW

The first mining district in Oregon for that part of the Northwest, was organized by miners of Waldo, Althouse and other areas of the Illinois Valley. At a meeting held under a large fir tree some forty miners put on paper the following mining law:

"Know all men by these presents, that the miners in council assembled on this 1st day of April A.D., 1852, do ordain and adopt the following rules and regulations to govern this camp:

"Resolved, first that 50 yards shall constitute a claim in the bed of the creek extending to high water on each side.

"Resolved, second that 40 feet shall constitute a bank or bar claim on the face extending back to the hill or mountain.

"Resolved, third, that all claims not worked when workable, after five days be forfeited or jumpable.

"Resolved, fourth, that all disputes arising from mining claims shall be settled by arbitration and the decision shall be final.

E. J. Northcutt, chairman.
attest: Philip Althouse, clerk."

The miners not only regulated the mining industry by their rules, but in some districts before legislation was enacted, passed laws prescribing penalties for crimes. Stealing of gold dust, provisions, horses and similar necessities of a miner's life and business was a serious offense, punishable in some cases by death.

EVERY PLACE A GOLD STRIKE

Within the next two years the Rogue and Applegate rivers and their tributaries were well traversed by prospectors seeking that "rich strike." Mining communities developed in every section of Josephine County, among them was Galice.

In the spring of 1852, Louis Galice, a French doctor and a small group of other miners proceeded down the Rogue River to the present site of Galice where they found the creek beds fabulously rich. Numerous large mines were established in this mineral belt in the following years. Among them the Old Channel Mine comprising more than 700 acres of ancient river channel contained more yardage of gold bearing gravel than any other mine in the state of Oregon.

Gold Discoveries Elsewhere And Different Mining Methods
Gold discoveries on the Fraser River of British Columbia in 1858, lured thousands of miners from Southern Oregon, many of whom never returned. This brought somewhat of a lull in the fast moving mining activities of the previous half decade.

By the early 1860's the easier surface mining was becoming less lucrative and it became necessary for the prospector to drive his pick and shovel deeper into the earth in search of gold deposits.

This situation brought about the hydraulic washing method of mining, first introduced in Calaveras County, California, and still in use in Josephine County a century later. Because this new method required large amounts of water under pressure to break down the earth to gravel and bedrock, it was often necessary to ditch or flume the water for some

Pages from the Past

distance to the mining location. Fluming required lumber which brought into being a new demand for that commodity. This established a new source of revenue for Josephine County in the form of logging and sawmill operations.

Digging deeper for gold also meant hardrock tunneling and finding gold mixed with other materials. Gold bearing quartz mines are widely distributed in Southwestern Oregon.

In order to free the gold from quartz rock, an age old method was put into use, that of the arrastra. This primitive method of extracting gold by grinding the ore was a slow operation but quite efficient. Usually the arrastras in Southern Oregon were powered by an overshot water wheel rather than animal or man powered as those in California and Mexico. Arrastras were in use and could be found all over the county until the depression days of the 1930's.

Time does not stand still, however, and progress required a faster way to extract the gold, thus, the installation of the steam driven stamping mills. One of the biggest and most profitable installations of this type of gold extraction was the steam driven 40 stamp mill at the Greenback Mine on Tom East Creek a tributary of Grave Creek. The machinery was installed in 1898 and successfully operated until 1908.

The turn of the century continued to see gold mining flourish until the advent of World War I, at which time most mining came to a complete standstill.

Following the war years mining made a comeback but the picture had changed considerably. The "promoters" who had put in an appearance to some extent before the war, were in full operation during the 1920's. This tainted the community with a bad name because of the many attempts to swindle the public. Unscrupulous promoters offered a "big deal" on various mines in the county which returned only a small percentage of the investor's funds. Most residents profited by these "wild cat operators" as it put money into the county, but it made the

raising of money for a legitimate operation from local as well as outside sources, nearly impossible.

DEPRESSION BRINGS OREGON'S SECOND GOLD RUSH

1933 and the new incoming administration put the nation off the gold standard for the first time in United States history, raising the price of gold from \$20.67 to \$35. (the present price). This period was also the never to be forgotten "depression years" following the "Crash" of 1929.

Thousands of unemployed, many with their families, streamed out of the cities and towns and headed for the gold fields. The state employment service enthusiastically got behind the "rush" and by organizing classes in gold mining, put some of the county's jobless back to work. In one two month period Grants Pass hardware stores sold 750 gold pans.

Actually the depression years were less noticeable to those living in this section of Oregon because of the "gold in the hills" and the fact that nearly everyone could raise a garden. "Easy Valley," a term often used to describe the Rogue River Valley, bore out its name because a good many could at least pan enough gold to buy "beans," even though it only amounted to as little as ten to seventy-five cents a day. However, there were some who actually made considerable money gold mining during those years.

Dredge, Last Successful Operation

The mechanization of the 1930's brought about a huge piece of gold extracting equipment, the dredge. Not only was it huge in size but constituted a like investment. This mechanical giant could do the work of 2500 miners while floating on a lake it excavated for itself when working and moving ahead. The Rogue River Gold Company which operated a dredge on Grave Creek proved to be the most successful of the many who tried this type of operation.

Rising wages, more expensive equipment and higher transportation costs were factors in reducing the margin of profit for the gold miner. The beginning of the 1940's found only a few of the many mines in Josephine County operating and the arrival of World War II brought an abrupt end to all gold mining. The past twenty years have brought about little change in the gold mining picture. Most of today's gold mining is carried on by hobbyists and aging oldtime prospectors.

CHINESE

No tale of early day mining would be complete without mentioning the Chinese and the part they played in the mines as well as in the lives of the miners. As many as 3500 Chinamen were working around Waldo in the early 1870's. Most of them were engaged in mining. They were usually "neat" miners and could take out gold in diggings which had been abandoned by the white miners.

PATIENTLY WAITING

Gold mining's epic chapter in early Americana is rapidly receding ever farther into the distant "past" but its effect upon the region will forever remain inscribed on the pages of history. It can serve as a foundation for the "present," and a hopeful dream of the area's "future" prosperity.

Yes, like all faithful sourdoughs of the past who were always hopeful of making that "strike of a lifetime," are the Sourdoughs of the present who are patiently waiting for the price of gold to make a glorious jump to at least \$70, an ounce so they too, can make good every prospector's dream of "Striking It Rich."

The foregoing article has concentrated on tracing the progress of gold mining in Josephine County during the past century. Let it not be overlooked, however, that other minerals have also been un-successfully and profitably mined. Among these were the rich

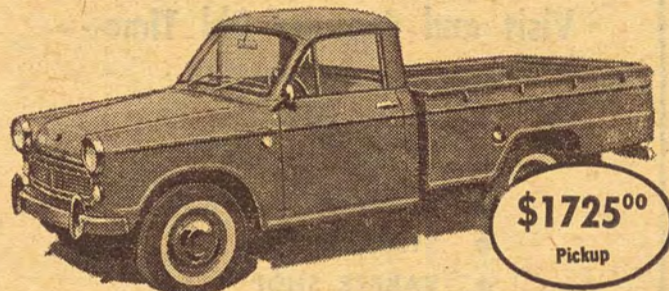
cut at Williams from a lime deposit which later became the Oregon Lime Products Co.

PICK-UP on SAVINGS



\$2025⁰⁰
Pickup with camper

PICK-UP this terrific TRUCK & CAMPER VALUE!



\$1725⁰⁰
Pickup

DATSUN PICKUP

For personal transportation, business or vacation fun you can't beat this DATSUN Pickup. It's big 6' x 4'8" bed carries up to 1 ton payload (or Camper top), yet DATSUN

delivers up to 31 mpg. Delivers loaded with extras: 4-speed transmission, torsion-bar suspension, heater, defroster, WSW Tires, vinyl interior plus a 12 months-12,000 mile warranty.

TAKE A TEST DRIVE... AT YOUR DATSUN DEALER

ROBERT C. MARTIN

Studebaker - Lark - Mercedes - Datsun
711 S.E. Sixth Phone 476-4481

Bank of Illinois Valley

CAVE JUNCTION, OREGON

"We Support the Miners of Josephine County"

Pacific Auction, Inc.

Geo. Boldway, Pres.

WE SELL ANYTHING—
ANY TIME—ANY PLACE

SALES EVERY MONDAY &
THURSDAY AT 7 P.M.

FARM & LIVESTOCK AUCTIONS

REAL ESTATE AUCTIONS
INDUSTRIAL LIQUIDATIONS

WE HAVE OUR OWN
CYANIDE GAS FUMIGATOR

476-5577

1187 Rogue River Highway

MINING - LOGGING - CONSTRUCTION

Equipment Headquarters

HAUPERT TRACTOR CO.

3610 North Pacific Highway Phone 773-5383

"THE HOUSE OF SERVICE"
MEDFORD, OREGON

Allis-Chalmers

White Freight Liner

White
Autocar
Cummins



CALL ONE OF OUR
SUPER SALESMEN



Servicemen and parts move fast by the Hupert Tractor Co. airplane. Most of the surrounding territory can have parts at a nearby airport or dropped at the job site within one hour after the call is received in Medford.



FOR BEST RESULTS
Take Advantage of
Coast to Coast
Advertising

**UNITED FARM
AGENCY**

Telephone: Home 30711,
Office 3602

CAVE JUNCTION

Claim Staking Hints Offered Prospectors

Vacant public surveyed or un-

the stock-raising homestead law (title to minerals only can be acquired), lands entered under other agricultural laws but not perfected, where prospecting can be done peaceably, and lands within the railroad grants for which patents have not issued.

Rights to mineral lands owned by the United States, are initiated by prospecting for minerals thereon, and upon the discovery of mineral, by locating the lands upon which such discovery has been made. A location is made by staking the corners of the claim, posting notice of location thereon and complying with the State laws, regarding the recording of the location in the county recorder's office, discovery work, etc.

Any person who is a citizen of the United States, or who has declared his intention to become a citizen, may locate, record, and hold a mining claim of 1,500 linear feet along the course of any mineral vein or lode subject to location. The lateral extent of locations of veins or lodes shall in no case exceed 300 feet on each side of middle of the vein at the surface.

No lode claim shall be located until after the discovery of a vein or lode within the limits of the claim, the object of which provision is evidently to prevent the appropriation of presumed mineral ground for speculative purposes, to the exclusion of bona fide prospectors, before sufficient work has been done to determine whether a vein or lode really exists.

The location notice should give the course and distance as nearly as practicable from the discovery shaft on the claim to some permanent, well known points or objects. It should also give the section, township and range.

All placer-mining claims located after May 10, 1872, shall conform as nearly as practicable with the United States system of public land surveys and the rectangular subdivisions of such surveys, and such locations shall not include more than 20 acres for each individual claimant. A location by two persons can not exceed 40 acres, and one by three persons can not exceed 60 acres.

But one discovery of mineral is required to support a placer location, whether it be of 20 acres by an individual, or of 160 acres or less by an association of persons.

The annual expenditure to the amount of \$100 must be made upon placer as well as lode locations.

Failure to perform the annual assessment work will subject a claim to relocation unless the original locator, his heirs, assigns, or legal representatives have resumed work after such failure and before relocation.

In the case of a lode claim the discovery shaft or trench should consist of the excavation of at least 5 cubic yards of material must be excavated to constitute the location work on a placer claim.

Some, but not all, State land is open to mineral entry. Following discovery, a location is made in the same manner as for claims on federal forests. A lease agreement must be obtained from the State Land Board, State Capitol Building, Salem, before any mining can be done.

The best information on patenting procedures is contained in the pamphlet "Information Relative to the Procedure of Obtaining Patent to a Mining Claim" issued by the U. S. Bureau of Land Management and available from the Bureau's Land Office, 710 E. Holladay Street, Portland 12, Oregon.

KERBYVILLE GHOST TOWN

26 Miles South of Grants Pass
on REDWOOD HIGHWAY

"FOR WESTERN FUN"

Visit and See the Old Time--

- TRADING POST
- ASSAY OFFICE
- SHERIFF OFFICE
- BLACKSMITH SHOP
- STAGE OFFICE
- BARBER SHOP
- GENERAL STORE
- BOOT HILL

GALICE RESORT

In the Heart of the Famous
Old Galice District

Cabins - Store - Cafe

— Home Made Pies —

Sandwiches - Soft Drinks

Groceries - Fishing Supplies

DINNERS BY RESERVATION

FREE INFORMATION

Telephone 476-3818

Bob and Florence Lee

Pope's Saw Shop

Home of Homelite

- CHAIN SAWS
- GENERATORS
- VIBRATORS
- MOWERS
- PUMPS

850 ROGUE RIVER HIGHWAY

Telephone 476-5413

CITY FURNITURE CO.

WHERE QUALITY AND
PRICES PREVAIL

Ph. 479-3112

720 Rogue River Hwy.

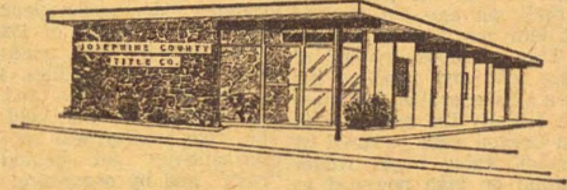
Grants Pass, Oregon

BERT MICHAELS Machine Shop

Completely Equipped for Machinery
Building and Overhaul.

1680 REDWOOD HIWAY

PHONE 476-3133



JOSEPHINE COUNTY TITLE CO.

- ★ Escows
- ★ Abstracts
- ★ Title Insurance

SERVING JOSEPHINE, JACKSON
AND LANE COUNTIES

Across from the Court House

324 N.W. Sixth St.

Phone 476-6884

WES PIEREN

LOGGING AND MINING
CONTRACTOR

ROAD BUILDING

From Low Cost Jeep Trails
To High Class Spec Roads.

Road Maintenance

by Job or Contract

BULLDOZER

POWER SHOVEL

and

GRADER WORK

WES PIEREN

TELEPHONE 476-2569



In October 1956, a 46-ton boulder of high-grade chrome ore worth approximately \$5,000, was taken from the Lucky Hunch chrome mine owned and operated by C. W. Dean and Fred Langley. The men, left to right, Bill Robertson, C. W. Langley and Duke Smith, one of the mine workers. According to Bill Robertson, who operated one of the biggest chrome mines in this area, the boulder is probably the largest chunk of chrome ore ever taken out in one piece in Oregon. It measured about ten feet in length and width, and was about six feet high. The boulder was taken out from about 50 feet underground by digging around it with a large TD-24 bulldozer, then a winch line was attached and the chunk of ore dragged out. It was taken to the Grants Pass Chrome depot. At the time, Dean stated, another, larger boulder of chrome ore lies beneath the one removed and operations were under way to get it out, although it would not be possible to remove it one piece. The Lucky Hunch mine is located about 10 miles down the Illinois River from Selma.

The domestic chrome-receiving depot for Southern Oregon and Northern California was placed in operation in August 1951, and ended in 1958.—Courtesy Josephine County Historical Society and Courier Files.

Sourdough Exchange

FLOATING PORTABLE DREDGES, Made to fit your job, 3", 4", 6", 8" size. Michaels Machine Shop, 1680 Redwood Avenue.

COMPLETE SELF-Contained portable floating dredge, four inch ramjet. Michaels Machine Shop, 1680 Redwood Avenue, Grants Pass.

JOSEPHINE COUNTY HISTORICAL SOCIETY welcomes new members, \$2 annual membership includes "Old Timer" Magazine. Secretary, 434 S.W. 6th, G.P.

CLAIM FOR SALE — One or more good talc claims near good road, Wilda Teague, 141 S.W. "J" Street, Grants Pass, Oregon.

CLAIM WANTED — I am interested in buying or trading for a proven patented gold claim. Claude Teague, Cheney Crk. Road, Grants Pass, Oregon.

SALE — Gold claim with unworked boulder point & on a good creek. Milton Beck, 141 S.W. "J" Street, Grants Pass, Oregon.

PROPERTY FOR SALE by owner— Len Schaffer, 1872 Jerome Prairie Od., 479-3695, Grants Pass, Ore.

ROCK FOI SALE — Agates, rainbow obsidian, chalcedony, carnelian agate and many others. Wilda Teague, 141 S.W. "J" St., Grants Pass, Oregon.

ASSESSMENT WORK — Reliable and capable party will do custom assessment work and file proof of labor. Kilpatrick and Sons, Wilderville, Oregon.

DOES ANWONE have a so-called "Gold Finder" that really works, that they will sell for a reasonable price? Wilda Teague, 141 S.W. "J" St., Grants Pass, Oregon.

BULLDOZER, SCRAPER and power shovel work by the hour, day or contract. Wesley Pieren, Logging & Mining Contractor, 476-2569, Grants Pass.

TIED TO YOUR PHONE? Let Us Assist You. GRANTS PASS ANSWERING SERVICE 479-2636

I WILL CUT to order and make first class jewelry from your gem stones. Polishing petrified wood a specialty. Write to Harold Teague, Box 558, Eastside, Oregon.

WE HAVE many worthwhile, interesting projects for our members. Be sure to get your copy of our new magazine "The Old Timer." Join the Josephine County Historical Society. Sec'y Dorsme Gohrke, 434 S.W. 6th, Grants Pass, Oregon.

WANT TO BUY — Good patented gold placer claim—don't want to buy your buildings. I just want pay dirt. Wilda Teague, 141 S.W. "J" St., Grants Pass, Oregon.

MAPS U.S.G.S. TOPOGRAPHICAL, Metsker county and ownership maps, many others. KIPP'S, 220 N.W. 6th.

WANTED TO BUY: Proved mining claim with creek. No pie in the sky deal. Be reasonable, write MINER, 2543 Hamilton Ln., Grants Pass, Oregon.

FOR SALE — 20 acre placer claim on creek, "Jump-off Joe," old cabin, \$6500. Box 271, Wilderville, Oregon.

WOODS & SON Masonry Contractors: Fireplaces, stone work and all types masonry construction 3430 Quartz Crk. Road, phone 476-6273.

PLACER GROUND for sale: Five claims, two cabins. E. L. Blake, Box 54, Selma.

YOU ARE INVITED to the Sourdough's meetings held the second Tuesday of every month at the Community Building, at 8 p.m.

More Facts About Gold

Gold has a specific gravity of 19.3 when pure which means that it is 19.3 times as heavy as water. Native gold is never pure but is alloyed with small amounts of other metals principally silver and copper.

Gold is to be distinguished from certain yellow sulfides (particularly pyrite and chalcopyrite) and

SOURDOUGH GAZETTE—7
SUMMER, 1963

from yellow flakes of altered micas by its malleability, its insolubility in nitric acid, and its high specific gravity.

Avirdupois weight is used for measuring common materials while troy weight is used for measuring common materials while troy weight is used for measuring the precious metals.

Stage coach holdups were fairly routine along southern Oregon routes in the 1880's.

FLYING 'A' SERVICE

M. STOUT

TIRES & BATTERIES

Cave Junction
Telephone 8701

American & Foreign Car Service
Tune-Up -- Brakes
Complete Engine Repair

DELL'S AUTO SERVICE

Bill Dell, Owner

Bus. 476-7405, Res. 479-1677

1850 Redwood Ave.
Grants Pass, Oregon

Sid Smythe

REGISTERED SURVEYOR
And
GEOLOGIST

1210 Rogue Drive

License No. 525 -- 479-3622 -- Grants Pass

C & D STORE

Merlin, Oregon

PHONE 476-3831

Fresh Meats
Cold Drinks
Fishing Tackle
Gas, Oil

"We Give S & H Green Stamps"

Paific Supply Co.

Sales . . .

- WIRE ROPE
- FIRE FIGHTING EQUIPMENT
- LOGGING BLOCKS & RIGGING
- CHAINS AND BINDERS
- FIRST AID EQUIPMENT
- LUBRICATION EQUIPMENT
- CUTTING EDGES AND END BITS
- EXPLOSIVES

Service . . .

- COMPLETE WIRE ROPE RIGGING SHOP
- FREE PICKUP AND DELIVERY

Manufacturing . . .

All Sizes of:
MACHINED STEEL
FERRULES AND SLEEVES
FOR WIRE ROPE SWAGING

NITE PH. 476-5061 1550 WILLIAMS HWY.



476-2436

LOOK

for the
Sign of the

Good Buy

For Your Every Real Estate Need

The Grass Is Always Greener on the
Evergreen Side of the Fence.

EVERGREEN LAND

145 S.E. G Street

R. W. "Bob" Loveless, Broker



OREGON TITLE CO.

OF JOSEPHINE COUNTY

"BORDER TO BORDER"

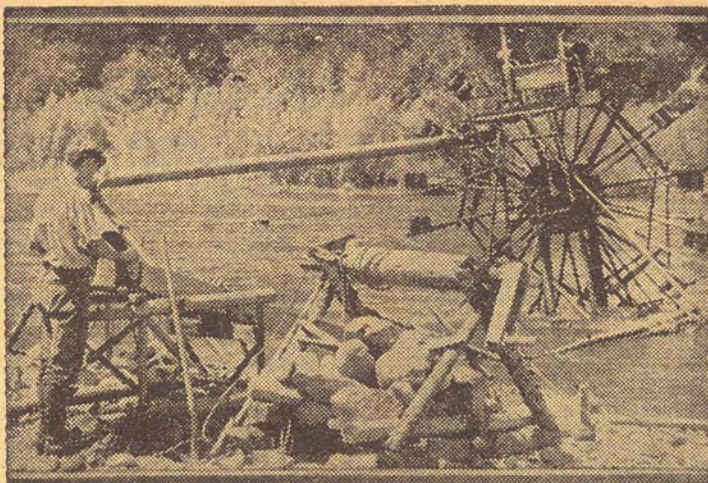
LAND SERVICE
ESCROW SERVICE
TITLE INSURANCE

324 N. W. SIXTH
GRANTS PASS

476-6891

THE GOOD OLD DAYS

An ad appearing in the Oregon Observer on Jan. 19, 1910. 80 Acres, 10 cleared, one million feet saw timber, 25 acres in sheltered cove above frost line, excellent for peaches or grapes. One half mile from corporation line of Grants Pass. Price \$1500 if sold within 30 days.



The contrivance pictured above brings water over gold-bearing sand and gravel and washes away all but the gold. Gold mining in Josephine County ranges from panning to big operations. Locally, the youth pictured above and his brother were known as the "Willie Westinghouses" because of their ingenuity.—Courier Engraving

J A X

SMALL ENGINE CLINIC

SALES & SERVICE

McCulloch Saws
Briggs-Stratton
and Clinton Engines

KERBY, OREGON

Carolines Cafe

Merlin, Oregon

"Where Loggers and
Miners Meet"

GOOD FOOD!

Redwood Supply Co.

MEL LEONARD, OWNER

Trojan Powder & Blasting Supplies

Roebing Wire Rope

Skookum Blocks and Rigging

ESCO Rigging

Drill Steel and Bits

Fire Tools and Equipment

Expert Rigging Service

We Install Eyes and Ferrules with our
500-Ton ESCO Press while you are
having a cup of coffee.

574 N.E. "F" St.—Phone 476-2253

MORE ABOUT—

Mining Outlook

(Continued from Page 1)

gotten, but there has been some recent interest in chemical-grade chromite for manufacturing of chromates. I think that the U.S. Bureau of Mines R.I. 5897 of Ferromanganese from Western metallurgical-grade chromite by Hunter and Kingston, 1961, presents some favorable statistics that should not be overlooked. The greatest deterrent to developing our domestic chromite is, of course, the relatively high cost of ore production. Smelting cost are, however, not considered ab-

normal.

I think one of the most important future mining developments in our area will be in gold mining. Southwestern Oregon has been a significant producer of gold in the past and with improved mining methods and the possibility of an increased price of gold or a domestic gold subsidy offered by the government, new mining activity would be stimulated. It should also be noted that some mining companies are interested in gold mining and are looking at mines on the basis of the present price and not counting on an improved price. The increased price of silver seems to have had very little stimulus.

Areas of copper mineralization are being looked at with renewed interest in outlining large low-grade deposits. The use of geochemical and geophysical prospecting methods will undoubtedly play an important role in this development.

Interest is still high in finding a commercial deposit of chrysotile asbestos. This short fiber, flexible and strong mineral is found only in serpentine. Deposits found to date have been to small.

We also have reserves of limestone and marble of relatively high purity in southwestern Oregon and northern California that will see gradual development and utilization. The paper industry needs lime and the cement industry is expanding.

Large bodies of chert mapped in southwestern Oregon may contain materials suitable for developing a granules industry. Other possible sources of granules will undoubtedly be looked for.

Other industrial minerals in the area that may find use in the future include: barite for drilling mud, garnet for abrasives, clay for brick and tile industry, and talc or soapstone which has numerous applications in industry.

It is my opinion that the future of our now faltering mining industry is beginning to look brighter.

Lottie Crabtree put on the first show ever seen at the mining town of Browntown in 1855.

Did You Know?

Material for the first Union flag raised in Josephine County was bought in Jacksonville and made by Mrs. Sawyer and Mrs. Morris.

Capt. John W. Hillman discovered Crater Lake in 1853.

Mail order catalogues were very important to early day settlers, the story is told of a disastrous fire at a family home near Kerby—It is reported the husband crashed into the burning building and came out with one single item—the Montgomery Ward catalogue.

The oldest road from the Rogue river valley to Crescent City was called the Peacock road.

August 3, 1903—A. C. Cavin and brother A. B. Cavin made a clean up last week from the Cavin Mine on South Hungry Creek of 13 1/4 pounds of gold. The product of this placer mine was remarkable for the number and size of the nuggets.



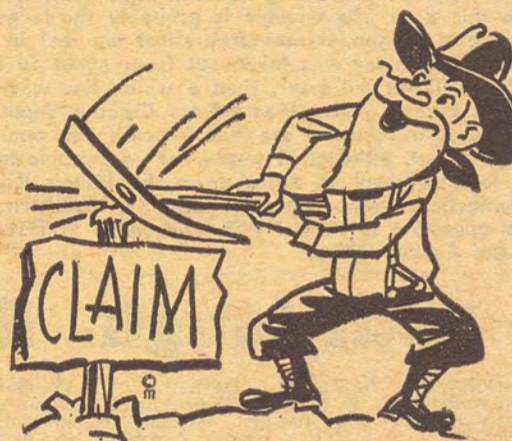
Harry's Auction Mart

H. A. La Rese

For the Best in
Auctioneering

337 Union Ave.
Phone: 476-7235

ENJOY YOURSELF AT
JOSEPHINE COUNTY FAIR
Then Stake Your Claim To A



NEW CAR

GRANTS PASS NEW CAR DEALERS

TRAHERN MOTORS

CHRYSLER - PLYMOUTH

7th and M Streets 476-2448

H & H MOTORS

MERCURY - COMET - METEOR - JEEP

941 S.E. Sixth Phone 476-6844

MOCK FORD SALES

FALCON - FAIRLANE - GALAXIE - THUNDERBIRD

916 S.E. Sixth Street Phone 476-6656

KELT CHEVROLET

143 S.E. J Street 476-4461

ROBERT C. MARTIN

STUDEBAKER - LARK - MERCEDES - DATSUN

711 S.E. Sixth 476-4481

MENASCO MOTORS

CADILLAC - BUICK - PONTIAC

200 N.E. Seventh Street Phone 476-7701

SURROZ DODGE

982 S.W. Sixth Street Phone 476-6684

J. S. WOLKE

OLDSMOBILE

139 S.E. I Street Phone 479-2671

WHEELER MOTORS, INC.

RAMBLER SALES & SERVICE

Sixth & K Streets 476-6658

Roy's "Flying A Service"

SEVENTH AND A STREETS

PHONE 479-2978

Grants Pass, Oregon

Brake Re-Line . . \$12.95

With Brake Re-Line

WHEEL CYLINDER REBUILT \$3.50 Each

BRAKE DRUMS TURNED \$1.50 Each

Minor Tune-Up

6 Cylinder Cars \$6.00 8 Cylinder Cars \$8.00

CHASSIS LUBRICATION	\$2.00
PACK WHEEL BEARINGS, Each	\$1.50
BATTERY RECHARGE	\$1.00
WASH JOB	\$2.00
WHEEL BALANCING, Each	\$1.50
UNIVERSAL JOINTS PACKED	\$6.00
AIR CLEANER CLEANED	\$1.00
SEAT BELTS INSTALLED	\$6.95

FREE PICK-UP SERVICE