

90-51-2A

SOURDOUGH



GAZETTE

Volume II, Number 1

1964

Sourdough Gulch, Josephine County, Oregon

Price 10c

Proposed Josephine Co. Mineral Exploration

The Minerals Committee of the Josephine County Area Development Committee has prepared a proposal for a combined aeromagnetic and geochemical survey of the County to stimulate interest in developing potential mineral resources. The proposal was approved by the Area Development Committee at their regular meeting Monday, August 10th, 1964. It is now necessary that the Federal A.R.A. agency approve the proposal and make the funds available for the study. The aeromagnetic survey of the entire county is estimated to cost \$86,600. The state of Oregon Department of Geology and Mineral Industries has agreed to cooperate on the project by completing the geochemical survey of the county at an estimated cost of \$8,000. The Committee has proposed that the combined surveys be published

with accompanying maps and interpretive reports and that 4500 copies be printed and made available to the public. If approved the information could be made available in a year's time after the bid has been let on the aeromagnetic survey.

Geochemical Sampling Program

The State of Oregon Department of Geology and Mineral Industries recently obtained new funds from the State Emergency Board for the purpose of continuing their geochemical sampling program. Two geology students from the University of Oregon, Roger Newell and Jim Blanchard, have been employed by the State to continue the sampling of stream sands in the area. Each sample taken is analyzed for copper, zinc and molybdenum. Information on the geochemical sampling program is available from the local Grants Pass field office of the Department or the main office in Portland at any stage of development of the project.

Historic Note

Oregon Observer
March 9, 1910

Wonder
Mr. Ramsey, the invincible, is too busy sluicing and taking out the yellow metal and platinum to even come down to Wonder store for his mail.

Gold Again Being Produced At Historic Greenback Mine



The famous old Greenback Mine near the head of Tom East creek has been the scene lately of renewed activity.

The Greenback Mine was not discovered until a few years before the turn of the century. The production for the first few years came from high grade gold ore mined near the surface and treated in arrastra. After the turn of the century a 40 stamp mill was installed and in 1904 the mine was the second largest gold producer in Oregon. The mine was extensively worked to the ninth level or about 500 feet below the surface. A winze was sunk from the ninth level and some engineer's reports indicate there is 25,000 to 50,000 tons of ore below that level.

again be a notable producer of the precious metal. Mr. Pieren and his associates, Gene Romilly and Bill Mignot, have recovered some high grade ore from near the surface by means of a stripping operation. Some samples of ore ran in the neighborhood of \$4,000 a ton. A ten ton ball mill has been reactivated and the gold is being recovered by means of amalgamation plates and a concentrating table.

Future exploration plans for the mine include proving the value of the ore below the ninth level on the Greenback vein, development of the Irish Girl and other veins which lie to the south and parallel to the Greenback vein, and a search for the extension of the Greenback vein which was cut off in that direction by a fault.

The Greenback Mine played an important part in the economy of Grants Pass in the early years of the present century and Mr. Pieren, the present owner, has hopes that it will

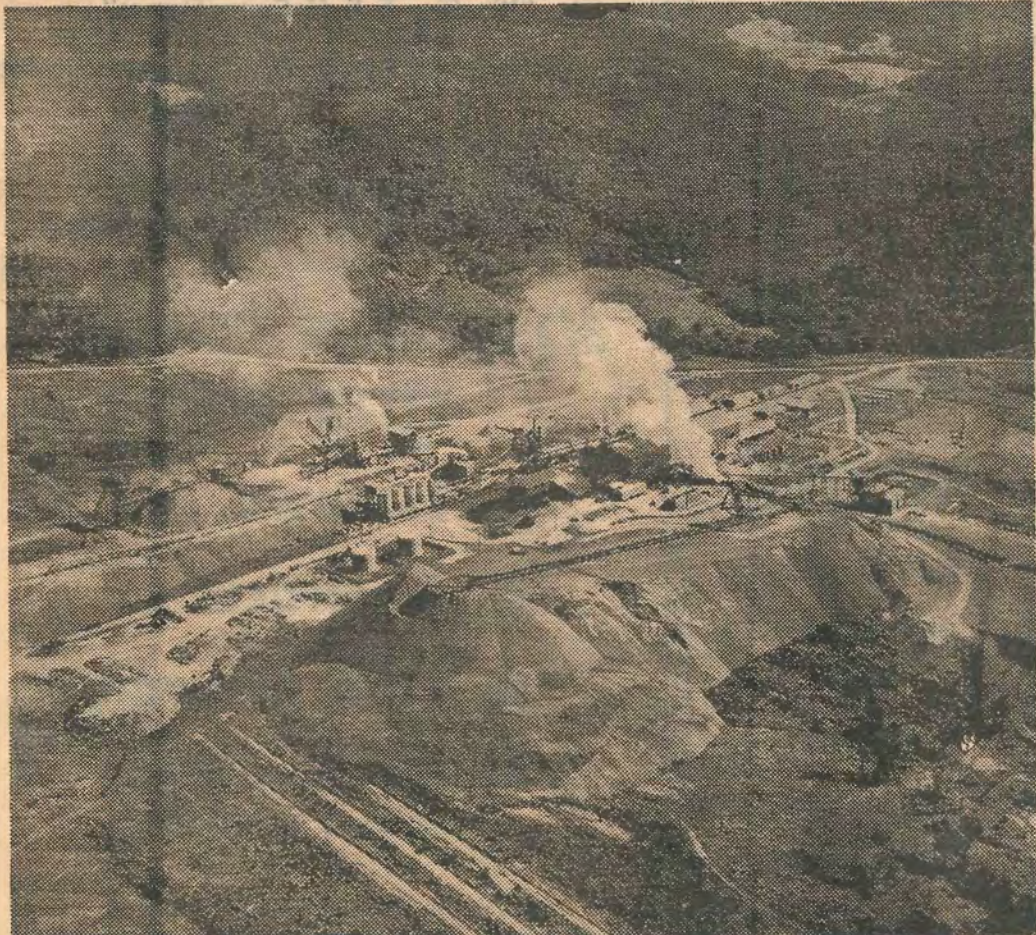
Biggest U. S. Nickel Mine Is Located in Southern Oregon

The Hanna Mining Company's nickel operation near Riddle continued to produce at full capacity during the first half of this year and the management anticipates a full production schedule for the second half of 1964.

The Mine, atop Nickel Mountain, produces an average grade of about 1.5 per cent nickel ore, which is moved to the smelter in 2½ ton capacity aerial tramway cars. At the smelter the ore is

dried, crushed, calcined, melted and refined to produce the final ferronickel product.

Ferronickel is used by the domestic and foreign steel industry to make stainless and other nickel alloy steels.



Aerial view of nickel smelter at Riddle, Oregon. The smelter has been in continuous operation since July of 1954. The overall mine and smelter employment is about 475 people.

Current Mining Activities

Hard Rock

New mineral production from the Illinois Valley includes limestone and marble from the Jiggs Morris property near Oregon Caves.

Dave Vallandigham is designing and building a mill for the Dark Canyon properties, on Powell creek, in the Williams area.

The Snowbird Mine near the Humdinger is being systematically explored by George Slade of Applegate.

A ten ton ball mill is operating on the Greenback mine near Placer.

The Ashland Mine is being explored and sampled by Lloyd Frizzell, local mining geologist, and associates.

Charles Rooker continues to explore the Braden Mine.

Active Placer mines—winter season of 1963-64

Leopold Placer on Galice Creek—Wesley Pieren

Joe-Joe Placer on Coyote Creek—Inman & Fitzpatrick

Leland Placer near Leland—A. C. Smith & Al Schiermeister

Hogum Placer on upper Hogum Creek—Henry Speaker

Gold Nugget on Josephine Creek—Ray Evans

Tennessee Gulch on Quines Creek—A. B. Hison

Speaker Placer on Wolf Creek—Ove Beck

Fred Von Roeder is drifting on bedrock at the Bear Placer on Josephine Creek.

H. E. Smith is placering at the mouth of Nagle Gulch on Josephine Creek.

Al Brown on upper Althouse Creek

Bob Pancost is still at the Gold Bar on Galice Creek

Sourdough Gazette
Published By
JOSEPHINE COUNTY
SOURDOUGHS, INC.
Josephine County, Oregon
Bert Michaels, President
Len Schaffer, Circulation
George Reynolds, Editor
E. B. Webb and Jack Hawkins,
Advertising
Harvey Dickey, Advisor

A pound of pure gold at \$35
an ounce is worth \$420 while a
ton of pure gold is worth \$840,000.

Wood 'N Rock Shop

ROCKS And
MYRLTEWOOD

Lloyd & Dene Pugh

1/4-Mile North of
Selma, Oregon
Right on 199 Hwy.

H & H MOTORS

● LINCOLN ● MERCURY
● COMET ● JEEP

941 S.E. Sixth Street

Ranch House Cafe

LANTERN TAVERN

2030 VINE ST.

(Old Hwy. 99 N. Near Morgan Lane)

Hellgate Cafe and Tavern

"Overlooking the greatest view
of the Rogue River"

GALICE ROAD

CARRY YOUR GOLD DUST IN A TRUSTY

DATSUN PICKUP



Ask George Reynolds, Sourdough V.P.,
how he likes his dependable Datsun Pickup.

Then choose yours at

ROBERT C. MARTIN

"Your Friendly Dealer Since 1933"
Drive up 7th St. to 1881 — Use Our Back Door!

OVER 165 HAPPY OWNERS NOW

Gold Mine Names Show Humor and Imagination

By Priscilla Averill

Early-day gold miners in Josephine County were an adventurous, hardgrubbing, rough and ready lot of rugged individualists. They also had other qualities—as can be seen in some of the names they dreamed up for their mines.

Though the origins of many of the old gold mines are fast becoming overlaid by succeeding layers of history, their names leave ample evidence that the men who found them did not lack imagination or humor. Some of the titles the early miners bestowed on their lucky (or occasionally not so lucky) claims are as colorful as the country and the era in which they thrived.

Some mines—the Bone of Contention mine, for instance, have a whole story in their names. Anybody can guess there was a considerable "hassle" when that one got its start! Then there is the Toughnut Property. (Did

they succeed in cracking it??) Did it give them as much trouble as the Holy Terror mine? Anyway, it's ten to one that the gold in each of these was a lot harder to come by than that of the Free and Easy mine.

Though many various metals, including copper and chrome, have been mined in this area, the vast majority of the more vivid names, as might be expected, are applied to the gold mines. Many hint of luck—such as Lucky Dog Placer and Four Leaf Clover Placer—but the name of the Surprise Mining Company suggests that its discoverers never expected to find it in the first place.

Some pet names, like Little Dandy, Little Gem and Little Marvel, clearly show their owners' affection for the source of their sudden wealth; but the one we like best is the Humdinger mines. It must have been!

And then there are those that reveal the miners' typically eternal hopes for vast riches: King Tutt Prospect and Bullion Mountains, Inc. (Now THERE was no piker!) Other miners, apparently more interested in the end results, hung on such titles as Ten Spot Mine, Legal Tender Group—and Greenback Mine, which is still in operation today after turning out more than 3½ million "greenbacks" for its owners.

From the very names of these mines, one can't help but suspect that they must have yielded more "pay dirt" than Hole in the Ground Placer, Dry Diggings, Lost Prospect or Last Chance Placer.

Some names hint of the miners' joy at the time of the strike, such as the Happy Day Mine; but one wonders if they hadn't perhaps celebrated not wisely but too well when they christened the Blue Mule Claim and the Red Elephant Claims. Perhaps they got together with the owners of the Steam Beer Placer.

The names of some mines, such as the Depression Breaker leave little doubt as to their history and the times during which they were operated. Of

these, our favorite is the Strenuous Teddy Claim, which seems to indicate physical fitness kick. Others with intriguing titles are the Stovepipe Mine, the Silent Friend mine, the Spotted Fawn, the Gold Bug and the Gold Plate Mine. One we especially like is the Doubting Susie, named by a miner for his wife "who doubted he would ever find anything!" She should have known he'd find a name, anyway. When it came to thinking up terse titles, the gold miners were without peer.

SHAMROCK

CAFE



Home Cooked Food
and Homemade Pies

918 S.W. 6th St.

CLAUDE MASTERS

REGISTERED
LAND SURVEYOR

344 Valley View Rd.
479-1897

Telephone 479-9232

REDWOOD CHEVRON

GAS ● OIL ● LUBES

Complete Engine Repair
Automotive Transmissions

1850 Redwood Ave.

Grants Pass

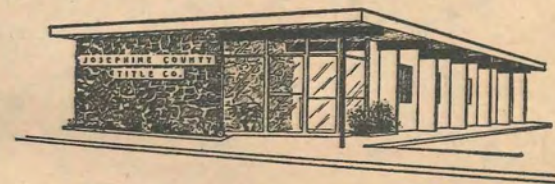
C & D STORE

Merlin, Oregon

PHONE 476-3831

Fresh Meats
Cold Drinks
Fishing Tackle
Gas, Oil

"We Give S & H Green Stamps"



JOSEPHINE COUNTY TITLE CO.

★ Escrows
★ Abstracts
★ Title Insurance

SERVING JOSEPHINE, JACKSON
AND LANE COUNTIES

Across from the Court House
507 N.E. Sixth Street Telephone 476-6884

Sporting Goods SHELTON

932 S.W. 6th St.
GRANTS PASS

Tourists Welcome

See Us For Hunting
and Fishing Supplies

AIR CONDITIONED

PALM MOTEL

Sixth At Savage

GRANTS PASS,
OREGON

FREE T-V

TELEPHONE
479-2338

Walter & Wilma York

A minute amount of grease or oil will make fine particles of gold float.

Plan to Explore Old Bunker Hill Mine

SID SMYTHE
REGISTERED SURVEYOR
And
GEOLOGIST
1210 Rogue Drive
License No 525
479-3622 Grants Pass

The Bunker Hill or Robinson Mine is located on a branch of Silver Creek a short distance below Soldiers Camp. It is one of the later discoveries in Josephine County. The first claim was located in 1912 but it was not until 1925 that the mine became a significant producer.

The mine became famous as a producer of high grade gold ore. The gold in the ore occurs

as free gold and also as a telluride which has been identified as Petzite. The ore averaged 19.50 ounces of gold to the ton in 1925.

In 1939, the mine, after being closed for several years, was reopened by William Robertson and Virgil E. Hull. Under the able supervision of Mr. Robertson development work resulted in the discovery of a rich ore shoot which produced 640 ounces of gold in four days of mining.

A long tunnel was started to tap the ore shoots found in the upper workings at depth. The tunnel was driven 1050 feet into the mountain and was near its goal when the chrome mining boom caused the project to be abandoned and the rail and equipment were removed for use in the chrome mines. In the course of running this long tunnel some very high grade ore was encountered so unexpectedly that all but a few samples ended up by being lost and covered in the dump.

Plans are in progress to extend the lower tunnel so as to tap the extension of the ore of the upper workings and also to prospect the lower tunnel for a downward and upward continuation of the ore shoot which was so unexpectedly encountered while driving the tunnel.

If perseverance, hope and hard work will bring success, the Bunker Hill Mine will again be producing the yellow metal and samples of high grade will be on display to show that there is still gold in them thar hills.

The Courier
Feb. 11, 1910

Oldest Man in Oregon Died on Briggs Creek

The oldest man in Oregon, James Farren, died on Briggs creek, this county, on Tuesday of this week. Mr. Farren was born in McMinnville, Warren County, Tenn., July 4, 1806, and had he lived until July 4 next, he would have been 105 years old.

At the age of 19 he left his native state and moved to Missouri, where he lived until 1863, when he moved to California and ten years later he took up his residence in Josephine County, where he has been known as an industrious and reliable citizen. When he first came to this section he entered into the mining business and in a modest way was successful from the very first. He had a love for agricultural and stock raising and to some extent he engaged in these callings in connection with his regular business of mining.

A pound of gold may not weigh quite as much as a pound of paper but it is surprising how many people would rather have gold than paper.

Josephine County
Natural Society
1964 SEASON Fifth Street
Grants Pass, OR 97526
A ton of pure gold is worth \$840,000.00 at \$35.00 per ounce.

SHELTON

AUTO
PARTS

930 S.W. Sixth St.

GRANTS PASS

O.K. TIRE STORE

NEW & USED TIRE SALES
RECAPPING — AUTO - TRUCK - FOREIGN CAR

839 Rogue River Hwy.

Telephone 476-7597

Pope's Saw Shop Home of Homelite

- CHAIN SAWS
- GENERATORS
- VIBRATORS
- MOWERS
- PUMPS

850 ROGUE RIVER HIGHWAY

Telephone 476-5413

HENDERSON

COMPLETE

Radiator Service

"Don't Let a Drip Ruin Your Trip"

205 E. PARK ST.

Phone 476-3462

Southern Oregon Rubber Co., Inc.

1377 Redwood Ave. — Grants Pass

Rollers and Specialty Items for Industrial Application

Also Complete Line of B. E.-J. Dick Seamless Belting.

Open & Closed Cell Foam Rubber

Area Code 503, Phone 476-6363

GALICE RESORT Cabins - Store - Cafe

In the Heart of the Famous
Old Galice District

Home Made Pies

Sandwiches - Soft Drinks

Groceries - Fishing Supplies

FREE INFORMATION

Telephone 476-3818

Florence Lee

SENATOR E. D. "Debbs" POTTS

INCUMBENT

SENATOR

(Pd. Pol Adv. by Debbs Potts, Grants Pass)

REDWOOD AUTO WRECKING

1665
Redwood Ave.

Telephone 476-7755

OLD BARN MARKET

2039
Redwood Ave.

7 a.m. — 10 p.m.



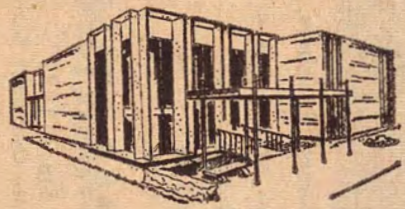
Rockhounds, Retired Explorers, Ranchers, Campers, Miners can load over a ton of supplies in a Datsun. See for yourself at

ROBERT C. MARTIN

"Your Friendly Dealer Since 1933"
Drive up 7th St. to 1881 — Use Our Back Door!

Buy 2-Only \$77 a month for 2

FIRST FEDERAL SAVINGS



and Loan
Association
OF GRANTS PASS, ORE.
101 S.E. 6th St.
Phone 479-3351

GRANTS PASS BRANCH



Southern Oregon
State Bank



Stake Your Claim on
Modern
TOTAL ELECTRICAL LIVING
Pacific Power & Light
Company.

JOSEPHINE COUNTY TAXPAYERS LEAGUE

Vote - Don't Moan

G. P.
Answering
Service
479-2636

JOSEPHINE COUNTY HISTORICAL SOCIETY

Visit the Kerbyville Museum

JOSEPHINE COUNTY SHOWING GOLD LOCATIONS

Amateur miners are wel-
come to pan in these loca-
tions, unless posted
Please respect private
property.

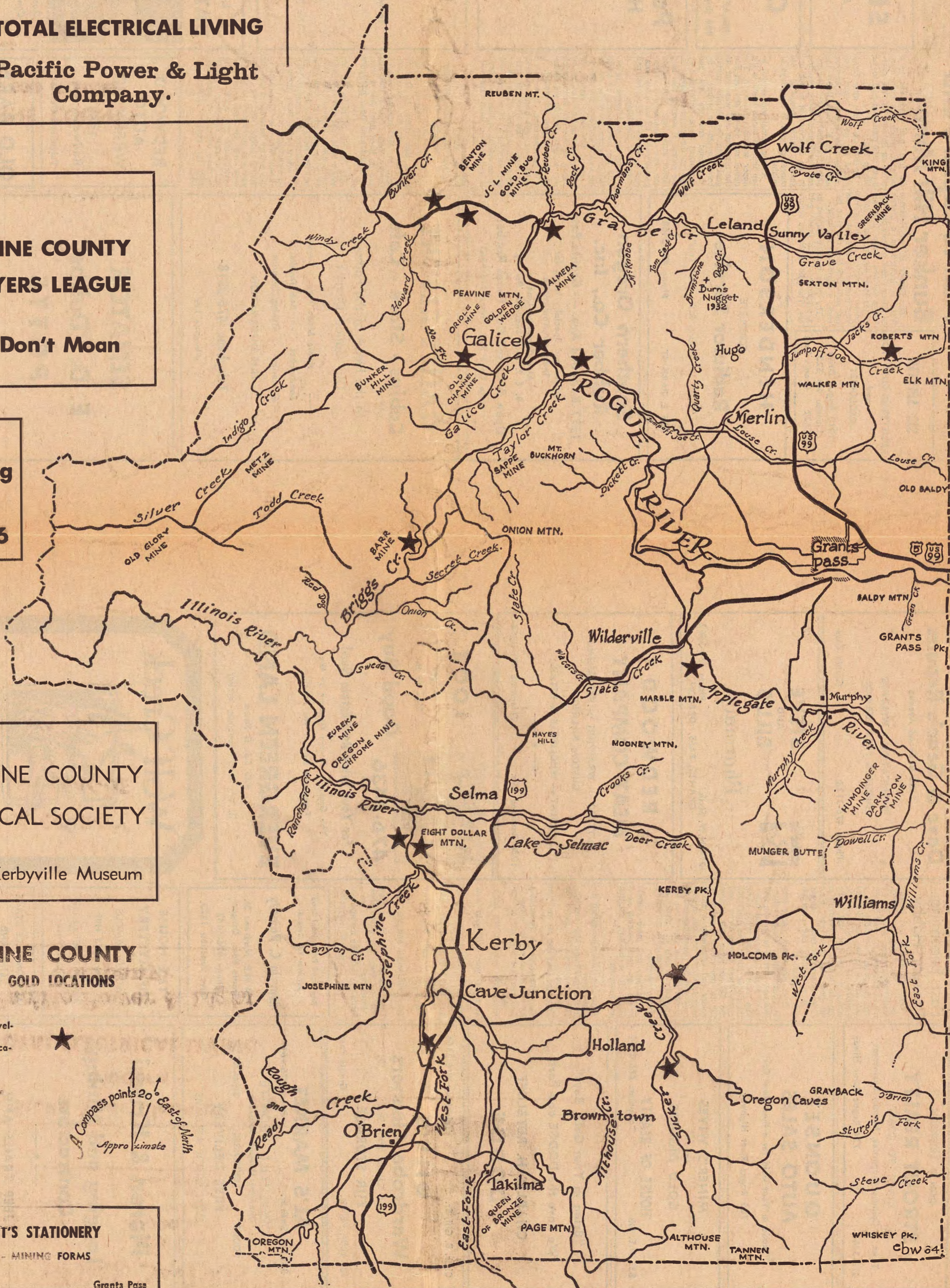


BARRETT'S STATIONERY

MAPS - MINING FORMS

425 S.E. 6th Street

Grants Pass



cbw 64

DON D. ERICKSON
STROUT REALTY
 COAST - TO - COAST
 Town & Country Properties, Motels, Businesses
 476-3400 774 Rogue River Hiway

**QUONSET
 AUTO SALES**
 "Trade in Your Gold for a Fine Used Car"
 765 Rogue River Highway

**MINER'S WIVES
 and
 GOLD DIGGERS**
HOUSE OF BEAUTY
 835 N.E. 6th Telephone 476-6184

"Bring in Your Gold, Boys"
 We have the **DODGE** and Parts
CHARLES H. RETZLOFF
DODGE

Chas. B. Gill, Sr. Telephone 476-3364
**GILL'S
 Wardrobe Cleaners**
 Gill Cleans With Skill
FUR STORAGE
 137 N.W. "E" St. Grants Pass

AL'S MARKET
 331 N.E. Sixth St. Phone 476-4517
 OPEN 'TILL MIDNITE
 Monday through Saturday
FOODS BEVERAGES SNACKS
FREE DELIVERY
 EVEN MINERS WELCOME

Pieren & Kruesi
**Logging and Mining
 Contractors**
 — • —
**JEEP TRAILS AND
 LOGGING ROADS
 LEVELING FOR HOMESITES**
 KRUESI: 476-4827
 PIEREN: 476-2569

**Gold Panning
 Fast Becoming
 Popular Hobby**

Gold panning is fast becoming a very popular hobby. Many vacationers, who have never panned for gold before, are the proud possessors of a gold pan, a prospector's pick and a shovel. They are all hoping to strike it rich but will settle for the flash of a few colors in the pan. For those who are lucky enough to find a nugget it is a thrilling and unforgettable experience.

There are many places here in Southwestern Oregon where this new type of miner can find more than an occasional color. The roots of water grass along the Rogue River, the Applegate river, lower Grave creek and the Illinois river will seldom fail to produce a number of colors and occasionally a small nugget. Narrow crevices in bedrock can be rewarding and in places the loose gravel on the inside bends of rivers or streams will carry a surprising amount of gold.

Lets hope that more people take up gold panning as a hobby. It is healthy, exciting and rewarding.

There are Gods that guard the treasures
 In the mountains high and blue
 There are Gods that guard the treasures
 From the fools like me and you

They will whisper in the evening
 As you sit around the camp
 You can feel that air of vengeance
 Watch the flicker of the lamp.

At night you will gain new courage
 But they will beat you down by day
 And they will make you want to wander
 From the straight and narrow way


They will laugh and they will beckon
 They will give you hopes anew
 But still they will guard their treasures
 From the fools like me and you
 By George W. Reynolds.

Registered Professional Land
 Surveyor For Oregon
Marvin C. Ramsey
 724 N.E. Madrone St.
 Grants Pass, Oregon
 Phone 476-5647
 Cave Junction 1223

**THE HOUSE
 OF MYSTERY**
 WORLD FAMOUS
 Near Gold Hill
 Between Medford and
 Grants Pass

**JACKSONVILLE STAGE
 LINE AND
 PIONEER VILLAGE**
 Stage Rides :- Hay Rides
 Horseback Rides
 Hwy. 238, 5 Miles West
 of Medford

Dave & Gene's Repairs
 1680 Redwood Avenue
**FABRICATION - WELDING
 DIESEL & FIELD SERVICE**
 Phone 476-3133 Grants Pass

 **STEVE
 AND
 BILL'S**
Pharmacy
 214 N.W. Sixth Phone 476-3562
 GRANTS PASS, OREGON

**REDWOOD
 MEAT COMPANY**
 CUTTING :- WRAPPING :- PROCESSING
 CUSTOM KILLING
MEAT — WHOLESALE & RETAIL
 — • —
 1930 Redwood Ave. Telephone 476-5068

 **LOOK**
 for the
 Sign of the
Good Buy
476-2436
For Your Every Real Estate Need
 The Grass Is Always Greener on the
 Evergreen Side of the Fence.
EVERGREEN LAND
 145 S.E. G Street
 R. W. "Bob" Loveless, Broker

Wolf Creek

Inn

Remember—Thars Gold In Them Thar Hills!

CAPP'S PUMP SHOP

SERVICE

1349 Redwood Avenue

Phone 476-7324

HASTING Cabinet Shop

Building Supplies — Pre-Hung Doors

2170 Redwood Ave.

Grants Pass

YAMAHA

Fun for Everyone

SALES AND SERVICE

480 Redwood Avenue

Telephone 476-7405



OREGON TITLE CO.

OF JOSEPHINE COUNTY

"BORDER TO BORDER"

LAND SERVICE
ESCROW SERVICE
TITLE INSURANCE

324 N.W. SIXTH
GRANTS PASS

476-6891

BERMUDA ROCK

The Decorative Rock

The White Beauty of Bermuda Rock

Will Enhance Your Home Too

- WALKWAYS
- PATIOS
- ROOFING
- BORDERS
- STEPPING STONES
- DRIVEWAYS

AVAILABLE AT YOUR DEALER

Lest We Forget

By F. W. LIBBEY

Gold mining was originally the mainstay of the economy of southern Oregon. It started settlements, built roads and schools, promoted local government, and established law and order. It was about the only source of new wealth and was a common means of earning a livelihood. It is now at best only a token of its past. Not only is gold mining as an industry dead, but its history and the knowledge of its individual mines, which formerly represented a large part of the area's payrolls, are fading into the hazy past. The critical point in its downfall was World War II's Administrative Order L-208, which was designed to stop the mining of gold, thus forcing gold miners to seek employment in base-metal mines, especially copper, in which there was supposed to be a shortage of miners. The order failed essentially to accomplish its objective, but the final result was to deal a crushing blow to gold mining. Shutdowns, always a serious operating matter in an underground mine because of the maintenance problem, compounded the gold miners' difficulties. After the war and the termination of L-208, costs of labor and supplies had multiplied but the price of gold remained the same. Thus gold mining was effectively killed.

It didn't take the Good Lord long to create all the gold that we have here on this earth but it seems that the Devil has spent a good deal of his time in finding hiding places for it.

1964 SEASON

SOURDOUGH GAZETTE-7

"Where Big Savings Happen"

Builders Emporium & Garden Center

1290 Redwood Ave.

Phone 476-7223

Redwood Supply Co.

MEL LEONARD, OWNER

Trojan Powder & Blasting Supplies

Roebing Wire Rope

Skookum Blocks and Rigging

ESCO Rigging

Drill Steel and Bits

Fire Tools and Equipment

Expert Rigging Service

We Install Eyes and Ferrules with our
500-Ton ESCO Press while you are
having a cup of coffee.

574 N.E. "F" Street — Telephone 476-2253

YOU STRIKE PAY DIRT When You Read



THE

Grants Pass Daily Courier

News . . .

THE COURIER excels in variety and thoroughness of both national and local news coverage, in pictures and in the most complete news coverage of the greater Grants Pass area.

Classified . . .

THE COURIER excels in classified advertising offering the most varied assortment imaginable of services, real estate, business opportunities, jobs and merchandise of all types for sale.

Display Advertising . . .

THE COURIER excels in giving its advertisers a receptive audience of some 27,000 every evening . . . with advertising that awaits their time and convenience . . . made attractive with artwork, photographs and complete details.

Commercial Printing . . .

THE COURIER excels in job printing having a well equipped commercial printing shop, both letter press and offset. Cards, billheads, business and social forms of every type get careful, creative planning and prompt, precision printing here.

Bristol Silica Co. Quartz Producer For 26 Years

The Bristol Silica Company has been in operation, without interruption, for 26 years. The mining claims were located in 1937 by Fayette I. and Esther P. Bristol, and they have been the owners and operators since, supplying Silica (quartz) to industry.

The last 3 years the company has been marketing white rock for gardens, known as Bermuda Rock, and white rock for buildings under the tradename Rogue River Quartz.

The plant is on the North River Road, between Rogue River and Gold Hill, Oregon. The quarry is approximately 1 mile straight south of the plant, although it is a 5 mile haul.

The quarry can be seen from the freeway, Interstate 5, as you drive south to Medford.

The following quote is from Geologic Map of the Grants Pass Quad angle, dated 1940 . . .

"A deposit of very pure silica is found in the SE 1/4 sec. 30, T. 36 S., R. 3 W. It abuts against limestone and is itself a sedimentary deposit. Whether it was originally siliceous tuff, chert or limestone is uncertain. Whatever the original material was it has been enriched in silica by solutions."

"The lens which is about 1000 feet long and 200 feet wide strikes N. 33 degrees E. and is nearly vertical. The silica grades into impure material along the western edge of the lens."

COMPTONS FLYING "A"



6th and G St.

BEST WISHES
to the
SOURDOUGHS

—Van Shippy
Dell's Auto Service

CAVEMAN SERVICE

Tires — Batteries
Tune-Up

Phone 479-2978

7th & A Sts., Grants Pass

Exchange Specialists
City & Country Properties

SHAFER REALTY

GEORGE SHAFER,
Realtor

Call 476-5408
Anytime

Who Are Josephine County Sourdoughs?

The Josephine County Sourdoughs is an organization of persons interested in the development of the mineral potential of Southwestern Oregon. Some of the members are prospectors and miners. Some are business men who can remember the important part that mining played in the development of this section of the country when the comparative price of gold and other minerals was sufficient to give an incentive to men to develop the mines of this area. We are all looking forward to the time when mining will again play an important part in the economy of this area.

There are two membership classes — active and associate

members. Active members are those who are directly involved in mining and pay a yearly fee of five dollars; Associate members, who do not vote, pay a \$2 membership fee and are not presently engaged in mining.

Sourdough meetings are held the second Tuesday of the month, the second Tuesday of each month at the Community building in Grants Pass.

TUT'S SANDWICHES

824 Rogue River Hwy.

APPLIANCE CENTER



"Complete Line of General Electric"

GIL & PAT SHECKELLS

5th & "E" Streets
GRANTS PASS

Phone 476-2408

The Queen Mining Co. is running another deep tunnel, and our farmers are getting a hustle on themselves, as spring won't wait — March 2, 1910.

Herch McClung came in with some nice nuggets, bought a pair of gum boots and supplies and went back to hunt some more nuggets.

199 TAVERN

1320
Redwood Ave.

ENJOY YOURSELF AT
JOSEPHINE COUNTY FAIR
Then Stake Your Claim To A

NEW CAR

GRANTS PASS NEW CAR DEALERS

MOCK FORD SALES

Galaxie - Thunderbird - Mustang - Falcon

MARTIN STUDEBAKER

Studebaker - Mercedes-Benz - Datsun - Volvo

WHEELER MOTORS, Inc.

Rambler - Toyota

MENASCO MOTORS

Cadillac - Buick - Pontiac - Oldsmobile - GMC

H & H MOTORS

Lincoln - Mercury - Jeep

CHARLES H. RETZLOFF DODGE

Dodge - Dart

KELT CHEVROLET

Chevrolet - Chevelle - Chevy II - Corvair

TRAHERN MOTORS, Inc.

Chrysler - Plymouth - Valiant

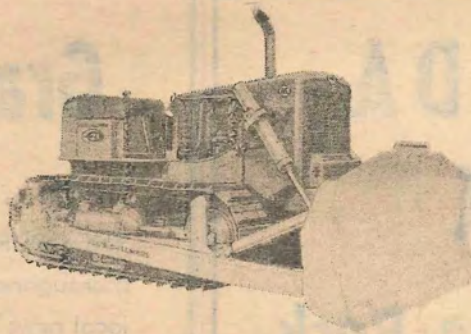
YOU CAN BUY A BETTER USED CAR
FROM YOUR NEW CAR DEALER

HAUPERT TRACTOR COMPANY EQUIPMENT HEADQUARTERS For



MINING

ALLIS-CHALMERS
WHITE FREIGHT LINER
WHITE
AUTOCAR
CUMMINS



Servicemen and parts move fast by the Hauptert Tractor Co. airplane. Most of the surrounding territory can have parts at a nearby airport or dropped at the job site within one hour after the call is received in Medford.

LOGGING

CONSTRUCTION

CALL ONE OF OUR
SUPER SALESMEN



3610 North Pacific Hwy. Phone 773-5383

"THE HOUSE OF SERVICE"

MEDFORD, OREGON