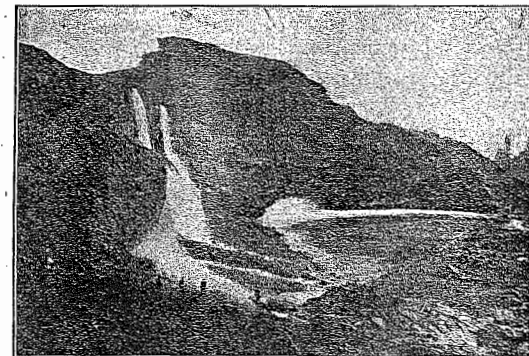


<i>Name</i>	<i>Where found</i>	<i>Use of product</i>
Olivine	Kerby District	Gems
Osmium	Grants Pass, Kerby, Waldo and Galice District	
Palladium	Grants Pass, Kerby, Waldo and Galice District	
Platinum	Grants Pass and Kerby District	Elec. and lab. supplies
Pyrite	Grants Pass and Kerby District	Sulphuric acid
Pyrolusite	Kerby District	Manganese ore
Pyroxene	Kerby District	
Pyrrhotite	Kerby District	Ore nickel
Quartz	Kerby and Grants Pass District	Flux
Rhodonite	Kerby and Grants Pass District	Ornamental stone
Rhodochromite	Kerby and Grants Pass District	Manganese
Siderite	Galice District	Iron ore
Silver	Grants Pass and Kerby District	
Sphalerite	Galice District	Zinc
Stibnite	Grants Pass District	Antimony
Sylvanite	Grants Pass District	Gold and silver ore
Talc	Grants Pass District	Soap and talcum powder
Tenorite	Waldo District	Copper ore
Tetrahedrite	Grants Pass District	Copper ore
Zircon	Grants Pass and Kerby District	

JOSEPHINE COUNTY OREGON

The Greatest Diversity of Minerals
and Metals in the World for Its Area

Produced Continuously for 70 Years



Grants Pass, Oregon
County Seat

Josephine County

THE diversity of minerals and metals in Josephine County, Oregon is authoritively stated to be unequalled in any other county in the United States. The subsequent list of metals and minerals most of which are commercialized are some of which have come under the author's notice.

It is safe to predict that mining will be an important industry in Josephine County, when such camps as Goldfield, Tonopah, Bisbee, Cripple Creek, Butte, and many others now producing from large bodies of various minerals and metals, will be depopulated and the mines exhausted. And, this for the reason of the presence of so great a number of metals and minerals so necessary in scientific research, electrical apparatus and alloys.

From 1851 to the present day mining has been, in one way or another an important industry in Josephine County. Today some of the most sensational discoveries in the past 70 years are now being exploited. The exhibits at this Convention are a few of the many metals and minerals. The richness of some are only typical of what has been found and is to be found in Josephine County hills and river beds. The plentiful supply of wood and water for mining purposes, combined with the unexcelled climate soon accentuates itself to the new-comer as ideal for mining. "Desert rats" go away only to come back to stay, the author knows, he was one of them. Men from the frozen north stick.

One particular feature of the Grants Pass District, which centers in Josephine County, is the fact of its being the source of a great portion of chromite produced during the World War and there is now no region known in the United States where chromite is so abundant as in this district.

Another feature that distinguishes this County is the finding of an alloy of nickel and iron known as "Josephinite". Some of this metal is on exhibit as found in the placers of Josephine Creek.

The inexhaustible lime deposits are now being exploited.

Numerous rare minerals and metals are being mined and marketed.

A rare metal, said to temper gold, silver and copper, making it hard and tough, is being mined near Grants Pass, in the Illinois Valley country.

One mine alone promises to produce a million in gold this year at its present rate of production and indicated ore bodies.

The largest producer of platinum in the United States is in Josephine County.

Minerals and Metals of Josephine County

Name	Where found	Use of product
Aragonite	Josephine Caves	Source of Lime
Arsenopyrite	Grants Pass District	Carries gold
Azurite	Queen of Bronze, Alameda and other districts	Copper ore
Barite	Galice District	Mfg. of paint and paper
Bornite	Grants Pass, Waldo and Alameda District	Copper ore
Carnotite	Galice District	Radium ore
Calcite	Grants Pass District	Mfg. cement, flux for smelter, source of lime
Celestite	Alameda Mine	Mfg. fire works
Chalcedony	Grants Pass District	Ornamental purposes
Chalcocite	Waldo & Galice District	Copper ore
Chalcopyrite	Grants Pass and Waldo District	Copper ore with gold and silver
Chlorite	Galice District	
Chromite	Grants Pass District <i>(Greatest district in World)</i>	Mfg. steel, brick, paint, tanning and furnace lining
Chrysotile	Kerby District	Abestos
Cinnabar	Pickett Creek District	Mercury
Cobaltite	Kerby District	Cobalt
Copper, Native	Alameda Mine	Copper
Corundum	Grants Pass District	Abrasive, ornament
Cuprite	Waldo District	Copper ore
Freibergite	Grants Pass and Galice	Lead
Garnet	Holland-Kerby	Abrasive
Gold	Josephine County	Arts, sciences and coinage
Graphite	Galice District	Mfg. lubricants and electrical supplies
Gypsum	Galice District	Mfg. plaster of Paris and fertilizer
Hematite	Kerby District	Iron ore
Ilmenite	Kerby District	Mfg. paint
Infusorial Earth	Kerby District	Lining furnaces
Iridium	Grants Pass, Kerby, Waldo and Galice	
Josephinite	Kerby District	Nickel and iron
Magnetite	Grants Pass and Waldo District	Iron ore
Malachite	Galice and Waldo Dist.	Copper ore
Molybdenite	Galice District	Steel alloy
Olympium	Waldo District	Hardening copper, gold and silver